

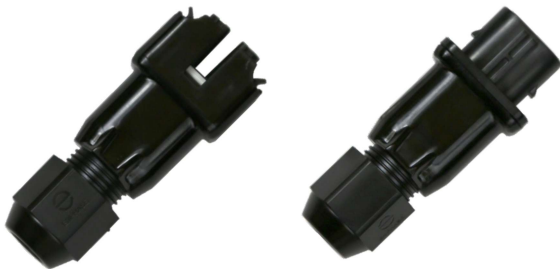
Enphase IQ Cable accessories

The Enphase IQ Cable and accessories are part of the latest generation Enphase Energy System. These accessories provide simplicity, reliability, and faster installation times.



Enphase IQ Cable

- Two-wire, double-insulated Enphase IQ Cable is 50% lighter than the previous generation Enphase cable
- New cable numbering and plug-and-play connectors speed up installation and simplify wire management
- Link connectors eliminate cable waste



IQ Field Wireable Connectors

- Easily connect IQ Cables on the roof without complex wiring
- Make connections from any open connector and center-feed any section of cable within branch limits
- Available in male and female connector types

CONDUCTOR SPECIFICATIONS

Certification	UL 3003 (raw cable), UL 9703 (cable assemblies), DG cable
Flame test rating	FT4
Compliance	RoHS, OIL RES I, CE, UV Resistant, combined UL for Canada and United States
Conductor type	THHN/THWN-2 dry/wet
Disconnecting means	The AC and DC bulkhead connectors have been evaluated and approved by UL for use as the load-break disconnect required by NEC 690.

IQ CABLE TYPES/ORDERING OPTIONS

Connectorized models	Size/Maximum nominal voltage	Connector spacing	Connector count per box
Q-12-10-240	12 AWG/277 VAC	1.3 m (4.2 ft)	240
Q-12-12-240	12 AWG/277 VAC	1.5 m (4.9 ft)	240
Q-12-17-240	12 AWG/277 VAC	2.0 m (6.5 ft)	240
Q-12-18-240	12 AWG/277 VAC	2.1 m (6.9 ft)	240
Q-12-20-200	12 AWG/277 VAC	2.3 m (7.5 ft)	200
Q-12-22-200	12 AWG/277 VAC	2.5 m (8.2 ft)	200
Q-12-25-200	12 AWG/277 VAC	2.8 m (9.1 ft)	200

ENPHASE IQ CABLE ACCESSORIES

Name	Model number	Description
IQ Raw Cable	Q-12-RAW-300	300 meters of 12 AWG cable with no connectors
IQ Field Wireable Connector (male)	Q-CONN-10M	Make connections from any open connector
IQ Field Wireable Connector (female)	Q-CONN-10F	Make connections from any IQ Cable open connector
IQ Cable Clip	Q-CLIP-100	Used to fasten cabling to the racking or to secure looped cabling
IQ Disconnect Tool	Q-DISC-10	IQ Disconnect tool for IQ Cable connectors, DC connectors, and AC module mount
IQ Sealing Caps (female)	Q-SEAL-10	One needed to cover each unused connector on the cabling
IQ Terminator	Q-TERM-10	IQ Terminator for unused cable ends
Enphase EN4 to MC4 adapter (150 mm) ¹	ECA-EN4-S22	Connect PV module using MC4 connectors to IQ Microinverters with EN4 (TE PV4-S SOLARLOK) 150 mm/5.9" to MC4
Enphase EN4 to MC4 adapter (1000 mm) ²	ECA-EN4-S22-10-12	Connect PV module using MC4 connectors to IQ Microinverters with EN4 (TE PV4-S SOLARLOK) 1000 mm/39.4" to MC4
Enphase EN4 to MC4 adapter (1800 mm) ²	ECA-EN4-S22-18-12	Connect PV module using MC4 connectors to IQ Microinverters with EN4 (TE PV4-S SOLARLOK) 1800 mm/70.9" to MC4
Enphase EN4 to non-terminated extension cable ³	ECA-EN4-FW-12	For field wiring of UL-certified DC connectors. EN4 to non-terminated cable, 150 mm/5.9"
Enphase EN4 non-terminated adapter ¹	ECA-EN4-FW	For field wiring of UL-certified DC connectors. EN4 (TE PV4-S SOLARLOK) to non-terminated cable 150 mm/5.9"
Enphase EN4 to MC4 adapter (600 mm) ³	ECA-EN4-S22-L	Longer adapter cable for EN4 (TE PV4-S SOLARLOK) to MC4. Use with split cell modules or PV modules with short DC cable 600 mm/23.6"
Enphase EN4 to MC4 adapter (57 mm) ²	ECA-EN4-S22-12	Connect PV module using MC4 connectors to IQ Microinverters with EN4 (TE PV4-S SOLARLOK) 57mm/2.24" to MC4
Enphase EN4 to non-terminated extension cable (1000 mm) ³	ECA-EN4-FW-10-12	For field wiring of UL-certified DC connectors. EN4 to non-terminated cable, 1000 mm/39.4"
Replacement DC adapter (MC4) ²	Q-DCC-2	DC adapter to MC4 (max voltage 100 VDC)
Replacement DC adapter (UTX) ¹	Q-DCC-5	DC adapter to UTX (max voltage 100 VDC)
Replacement DC adapter (MC4) IQ8P Microinverters ²	Q-DCC-2-P	DC Adapter to MC4 (max voltage 100 VDC) for IQ8P Microinverter
Enphase MC4 to non-terminated extension cable (1000 mm) ³	ECA-S22-FW-12	For field wiring of UL-certified DC connectors. MC4 to non-terminated cable, 1000 mm/39.4"
Enphase MC4 to MC4 extension cable (1000 mm) ²	ECA-S22-S22-10-12	MC4 to MC4 extension cable to connect PV module to DC adapter (MC4) or IQ Microinverters with MC4, 1000 mm/39.4"





Enphase MC4 to MC4 extension cable (1800 mm) ²	ECA-S22-S22-18-12	MC4 to MC4 longer extension cable to connect PV module to DC adapter(MC4) or IQ Microinverters with MC4, 1800 mm/70.9"
---	-------------------	--

¹Conforms to UL subject 9703 and qualified by UL LLC.

²Conforms to UL subject 9703.

³Conforms to UL subject 9703.



 <p>IQ Terminator IQ Terminator for unused cable ends, sold in packs of ten (Q-TERM-10)</p>	 <p>IQ Sealing Caps IQ Sealing Caps for unused aggregator and cable connections (Q-BA-CAP-10 and Q-SEAL-10)</p>
 <p>IQ Disconnect Tool Plan to use at least one per installation, sold in packs of ten (Q-DISC-10)</p>	 <p>IQ Cable Clip Used to fasten cabling to the racking or to secure looped cabling, sold in packs of one hundred (Q-CLIP-100)</p>

Revision history	Date	Description
DSH-00247-1.0	July 2024	Initial release.
		Previous releases.

To learn more about Enphase offerings, visit <https://enphase.com>

© 2024 Enphase Energy. All rights reserved. Enphase, the e and CC logos, IQ, and certain other marks listed at <https://enphase.com/trademark-usage-guidelines> are trademarks of Enphase Energy, Inc. in the U.S. and other countries. Data subject to change.