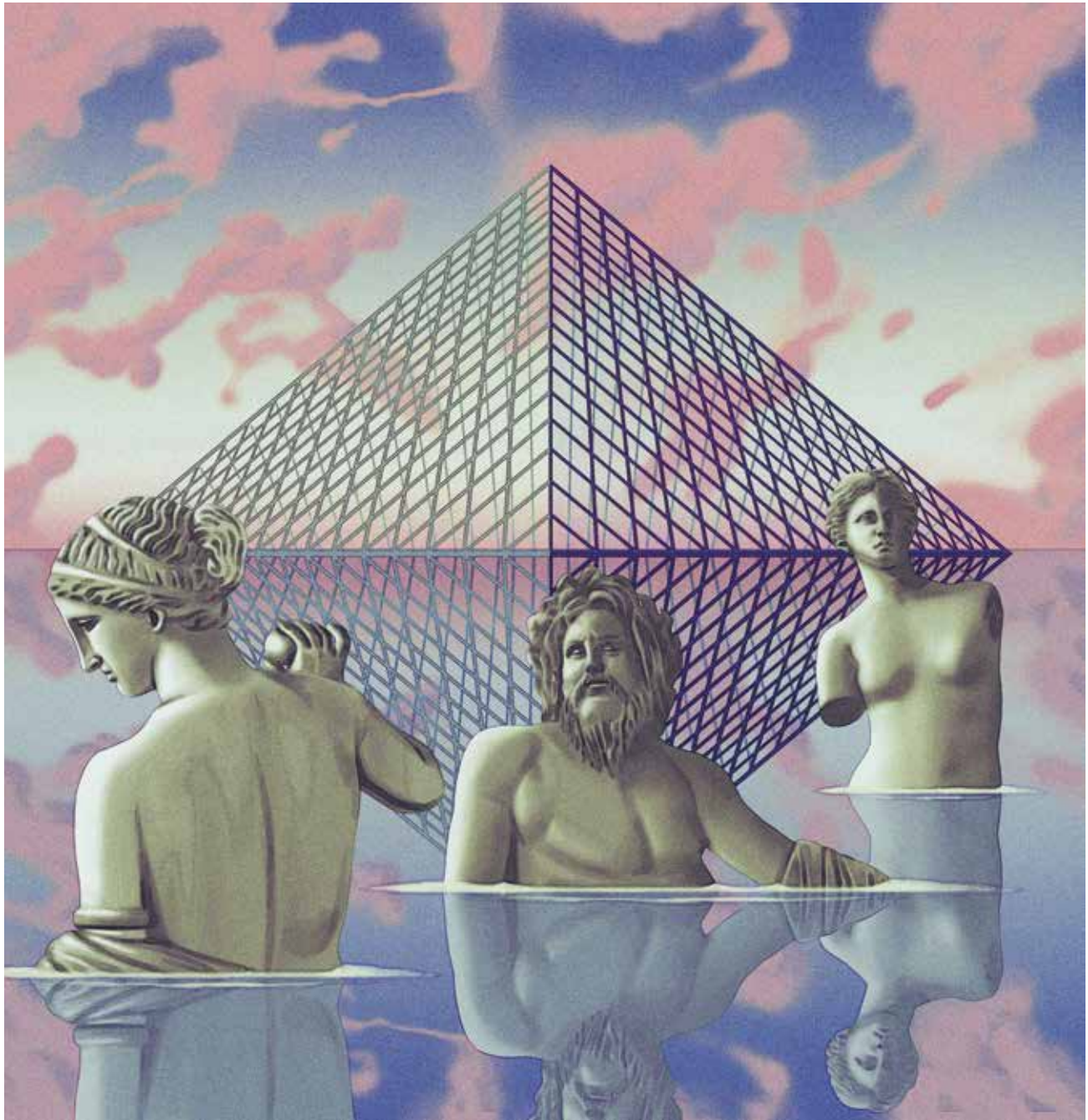


THE BEST OF FRENCH CULTURE

JUNE 2021

FRANCE-AMÉRIQUE

BILINGUAL



Volume 14, No. 6 USD 19.99 / CAD 25.50

GUIDE TV5MONDE USA

STATUES, SINGERS, AND TV SHOWS AT THE LOUVRE

Statues, starlettes et séries au Louvre

GEEK CHICK

Aurélien Jean, la chercheuse qui défie les codes
Taking the Code Less Traveled

TAILOR-MADE HOMES

Robert Couturier, la philosophie dans le boudoir
Philosophy in the Living Room

FOOD FETISH

Jim Harrison: l'appétit vient en écrivant
Writing to Whet the Appetite

FRENCH CULTURAL EVENTS IN NORTH AMERICA

TRACY KENDRICK

New York, NY

HUGUETTE CALAND

Born in Beirut and a long-time resident of both Paris and Los Angeles, Huguette Caland died in 2019 at the age of 88, leaving behind an oeuvre that celebrates the human body – its sensuousness, its vitality, its relation to the clothing that conceals it and the landscapes it inhabits. Focusing on how she used drawing to candidly represent female sexuality, **Huguette Caland: Tête-à-Tête** displays works on paper and canvas as well as notebooks, sculptures, mannequins, and caftans. *June 11 through Sept. 19 at the Drawing Center; drawingcenter.org.*

Huguette Caland, *Christine*, 1995.





New York, NY

CÉZANNE DRAWING

Bringing together more than 200 works on paper and a selection of related oil paintings, **Cézanne Drawing** is the first major U.S. exhibition to examine how the artist used pencil and watercolor throughout his career as means of conceptual and formal experimentation. The subjects range widely, from intimate family portraits to landscape sketches, to copies of old masters. *June 6 through Sept. 25 at the Museum of Modern Art; moma.org.*

Paul Cézanne, *Still Life with Cut Watermelon*, ca. 1900.

San Antonio, TX

AMERICA'S IMPRESSIONISM

America's Impressionism: Echoes of a Revolution explores how the then avant-garde movement took hold state-side and artists reinterpreted it to render landscapes ranging from the green-banked Charles River in Massachusetts to the plains of North Texas to the Big Sur coastline of California. John Leslie Breck, Cecilia Beaux, William Merritt Chase, Jane Peterson, Willard Metcalf, and Emma Richardson Cherry are among the many talents represented by some 70 works of art. *June 11 through Sept. 5 at the San Antonio Museum of Art; samuseum.org.*



Theodore Earl Butler, *Grainstacks, Giverny*, ca. 1897.

Buffalo, NY

HERVÉ TULLET

Hervé Tullet: Shape and Color is the largest exhibition ever devoted to the work of the Normandy-born artist and author of such children's books as the best-selling *Press Here*. Instantly recognizable with their simple lines and largely primary colors, his creations emphasize viewer participation, each an invitation to play. *June 26 through Sept. 12 at Albright-Knox Northland; albrightknox.org.*

Courtesy of the artist.



Gabrielle Chanel for House of Chanel, 1960-1969.

Kent, OH

FOREVER CHANEL

Forever Chanel/Coco + Karl chronicles the evolution of one of the world's most famous fashion houses through 40-odd outfits by the two larger-than-life designers responsible for its enduring cachet. The show compares and contrasts founder Gabrielle Chanel's and longtime creative director Karl Lagerfeld's use of chains, tweed, quilting, and other hallmarks of the label while considering the pair's celebrity identities and the brand's clientele. *June 11, 2021, through Feb. 27, 2022, at the Kent State University Museum; kent.edu/museum/event/forever-chanelcoco-karl.*

Houston, TX

MONET TO MATISSE

Born in Argentina and raised in Paris, the late philanthropist Georges Bemberg assembled an outstanding art collection now housed in a Renaissance mansion in Toulouse. Some 90 paintings and works on paper make a stateside appearance in **Monet to Matisse: Impressionism to Modernism from the Bemberg Foundation** offering a star-studded survey of late 19th- and early 20th-century French art. *June 27 through Sept. 19 at the Museum of Fine Arts, Houston; mfah.org.*



Paul Signac, *Flowering Almond Trees*, 1896. © RMN-Grand Palais/ Mathieu Rabreau