

WHO TO CALL

Communication is the key to a stress free loan process.
If you have questions or concerns, we are here for you.

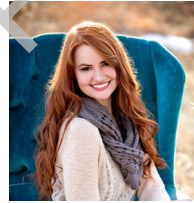
It is our goal to promptly answer any
questions you may have.



Laura Edwards
Area Sales Manager
NMLS ID# 261227
WYO-MLO# 4038
307-689-9905
ledwards@bayeq.com



Kelli O'Loughlin
Loan Coordinator
307-682-1807
oloughlin@bayeq.com



Kaycee Ashby
Production Partner
NMLS ID# 1499761
307-682-1807
Kashby@bayeq.com



Michele Miller
Loan Processor
307-682-1807
Mmiller@bayeq.com

39 Town Center Drive #110 Gillette, Wyoming 82718
www.bayequityhomeloans.com

HOME LOANS
bay equity



Equal Housing Lender. This is not a commitment to lend or extend credit. Restrictions may apply. Rates may not be available at time of application. Information and/or data are subject to change without notice. All loans are subject to credit approval. Not all loans or products are available in all states. Bay Equity LLC, 28 Liberty Ship Way Suite 2800, Sausalito, CA 94965; NMLS ID#76988. Wyoming Mortgage Lender/Broker License #2558; Regulated by the Division of Real Estate. NMLS consumer access: www.nmlsconsumeraccess.org BECH-190108-1.0