

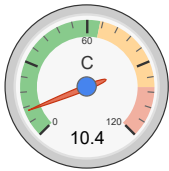


all data without guarantee - Accuracy: +/-15%

xcopterCalc - Multicopter Calculator

[News](#) | [Help](#) | [Tutorial](#) | [Submit Sp](#)

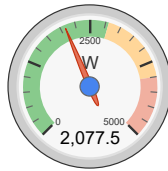
General	Motor Cooling: <input type="text" value="good"/>	# of Rotors: <input type="text" value="4"/> <input type="text" value="flat"/>	Model Weight: <input type="text" value="25000"/> g <input type="text" value="881.8"/> oz	incl. Drive <input type="text" value=""/>	Frame Size: <input type="text" value="3000"/> mm <input type="text" value="118.11"/> inch	FCU Tilt Limit: <input type="text" value="no limit"/>	Field Elevation: <input type="text" value="2000"/> m ASL <input type="text" value="6562"/> ft ASL	Air <input type="text" value="20"/> <input type="text" value="68"/>
Battery Cell	Type (Cont. / max. C) - charge state: <input type="text" value="LiPo 16000mAh - 65/100C"/> - <input type="text" value="normal"/>	Configuration: <input type="text" value="7"/> S <input type="text" value="2"/> P	Cell Capacity: <input type="text" value="16000"/> mAh <input type="text" value="32000"/> mAh total	max. discharge: <input type="text" value="85%"/>	Resistance: <input type="text" value="0.0007"/> Ohm	Voltage: <input type="text" value="3.7"/> V	C-R <input type="text" value="65"/> <input type="text" value="100"/>	
Controller	Type: <input type="text" value="max 150A"/>	Current: <input type="text" value="150"/> A cont. <input type="text" value="150"/> A max	Resistance: <input type="text" value="0.0015"/> Ohm	Weight: <input type="text" value="200"/> g <input type="text" value="7.1"/> oz	Accessories			Cur <input type="text" value="0"/>
Motor	Manufacturer - Type (Kv): <input type="text" value="Kontronik"/> <input type="text" value="Pyro 850-31 (310)"/> <input type="text" value="search..."/> <input type="text" value="Prop-Kv-Wizard"/>	KV (w/o torque): <input type="text" value="310"/> rpm/V	no-load Current: <input type="text" value="2.62"/> A @ <input type="text" value="10"/> V	Limit (up to 15s): <input type="text" value="4000"/> W	Resistance: <input type="text" value="0.0263"/> Ohm	Case Length: <input type="text" value="61"/> mm <input type="text" value="2.4"/> inch	# m <input type="text" value="14"/>	
Propeller	Type - yoke twist: <input type="text" value="APC Electric E"/> - <input type="text" value="0°"/>	Diameter: <input type="text" value="25"/> inch <input type="text" value="635"/> mm	Pitch: <input type="text" value="4"/> inch <input type="text" value="101.6"/> mm	# Blades: <input type="text" value="2"/>	PConst / TConst: <input type="text" value="1.08"/> / <input type="text" value="1.0"/>	Gear Ratio: <input type="text" value="1"/> : <input type="text" value="1"/>		



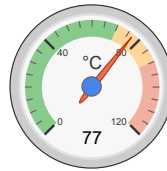
Load:



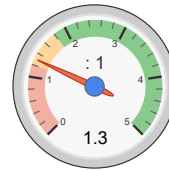
Hover Flight Time:



electric Power:



est. Temperature:



Thrust-Weight:

Remarks:

Battery	Motor @ Optimum Efficiency	Motor @ Maximum	Motor @ Hover	Total Drive	M
Load: 10.40 C	Current: 56.24 A	Current: 83.23 A	Current: 55.48 A	Drive Weight: 10285 g	A
Voltage: 25.08 V	Voltage: 25.26 V	Voltage: 24.96 V	Voltage: 25.27 V	362.8 oz	
Rated Voltage: 25.90 V	Revolutions*: 7344 rpm	Revolutions*: 7015 rpm	Revolutions*: 5465 rpm	Thrust-Weight: 1.3 : 1	a
Energy: 828.8 Wh	electric Power: 1420.9 W	electric Power: 2077.5 W	Throttle (log): 73 %	Current @ Hover: 221.90 A	
Total Capacity: 32000 mAh	mech. Power: 1250.2 W	mech. Power: 1807.3 W	Throttle (linear): 78 %	P(in) @ Hover: 5747.3 W	n
Used Capacity: 27200 mAh	Efficiency: 88.0 %	Power-Weight: 332.4 W/kg	electric Power: 1402.1 W	P(out) @ Hover: 4826.6 W	n
min. Flight Time: 4.9 min		150.8 W/lb	mech. Power: 1206.7 W	Efficiency @ Hover: 84.0 %	
Mixed Flight Time: 7.0 min		Efficiency: 87.0 %	Power-Weight: 229.9 W/kg	Current @ max: 332.94 A	e
Hover Flight Time: 7.4 min		est. Temperature: 77 °C	104.3 W/lb	P(in) @ max: 8623.1 W	
Weight: 6230 g		171 °F	Efficiency: 86.1 %	P(out) @ max: 7229.2 W	w
219.8 oz			est. Temperature: 61 °C	Efficiency @ max: 83.8 %	
			142 °F		
			specific Thrust: 4.46 g/W		
			0.16 oz/W		

share

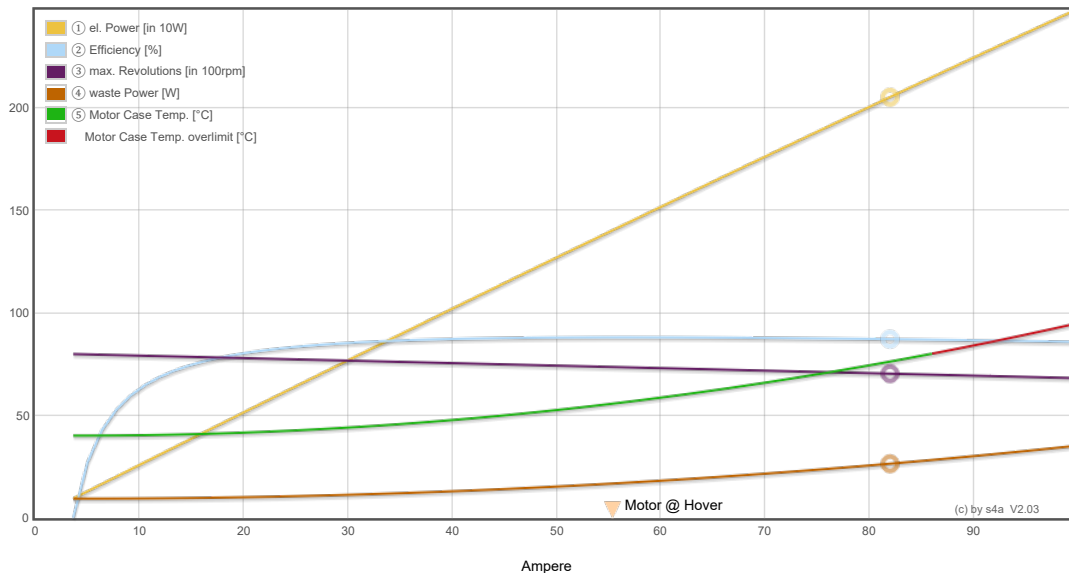
<http://>

<http://www.eCalc.ch...>

add to >>

D

Motor Characteristic at Full Throttle



Important Note:

Before flight recheck your max. current! If your Current, el. Power or RPM are over the manufacturers limits your motor, controller and/or battery may take damage! **Verify before flight by measurement!**

for printing use Landscape format
* The manufacturer limitation is NOT mc
** Testdata with reduced accuracy

Version: X 6.70, 07.04.16 / Data: 23.05.16 with 6503 Motors
translated to english by Markus Mueller

4930534

MODELLENUM	4930534
PLATZ	1
PLATZ	1
PLATZ	1

*** **