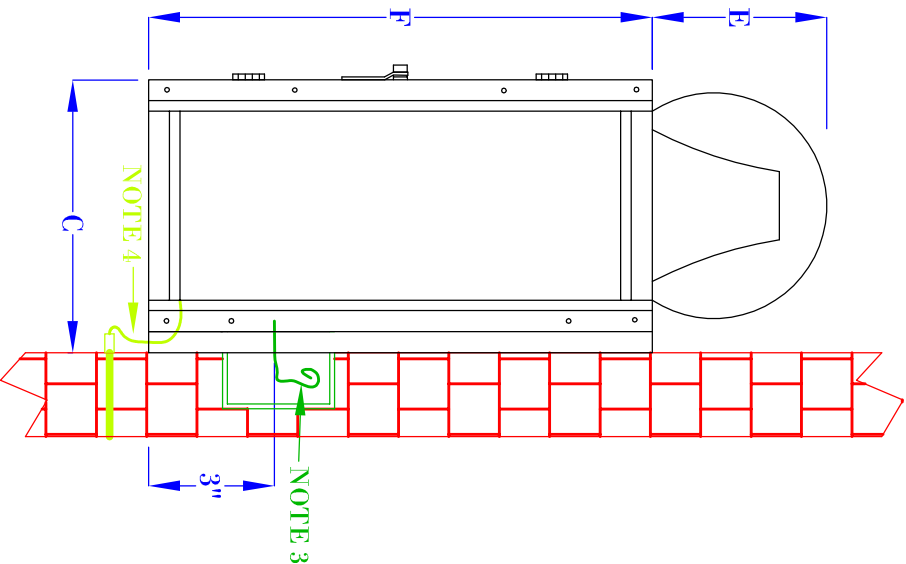


FRONT VIEW
(NTS)



SIDE VIEW
(NTS)

- NOTES:
1. MOUNTING HARDWARE SUPPLIED BY OTHERS
 2. FIXTURES ARE HANDCRAFTED. DIMENSIONS MAY VARY PLUS OR MINUS $\frac{1}{4}$ "
 3. ELECTRIC LIGHTS SUPPLIED WITH 18/2 WIRE WITH GROUND
 4. GAS LIGHTS SUPPLIED WITH $\frac{3}{16}$ " COPPER GAS LINE AND $\frac{3}{4}$ " GAS LINE ADAPTOR

BEVOLO GAS & ELECTRIC LIGHTS

LIGHT:	COTTON EXCHANGE 14", 16", 22"
BRACKET:	FLUSH MOUNT

SIZE:	14"	16"	22"
A:	14 $\frac{1}{8}$ "	16 $\frac{1}{8}$ "	22 $\frac{1}{8}$ "
B:	9"	9"	9"
C:	6 $\frac{1}{2}$ "	6 $\frac{1}{2}$ "	6 $\frac{1}{2}$ "
E:	4"	4"	4"
F:	10 $\frac{1}{8}$ "	12 $\frac{1}{8}$ "	18 $\frac{1}{8}$ "

DATE:	12-30-11
APP. BY:	MAJ
REVISION:	2
DRW BY:	JJG

COPYRIGHT 2011, BEVOLO GAS & ELECTRIC LIGHTS.
THIS DRAWING AND ANY DESIGN OR DATA
CONTAINED THEREIN ARE CONSIDERED PROPERTY
OF BEVOLO GAS AND ELECTRIC LIGHTS. NEITHER
THE DRAWING NOR ITS CONTENTS MAY BE COPIED,
REPRODUCED, OR EDITED TO A LIKENESS WITHOUT
THE WRITTEN CONSENT OF BEVOLO GAS AND
ELECTRIC LIGHTS.