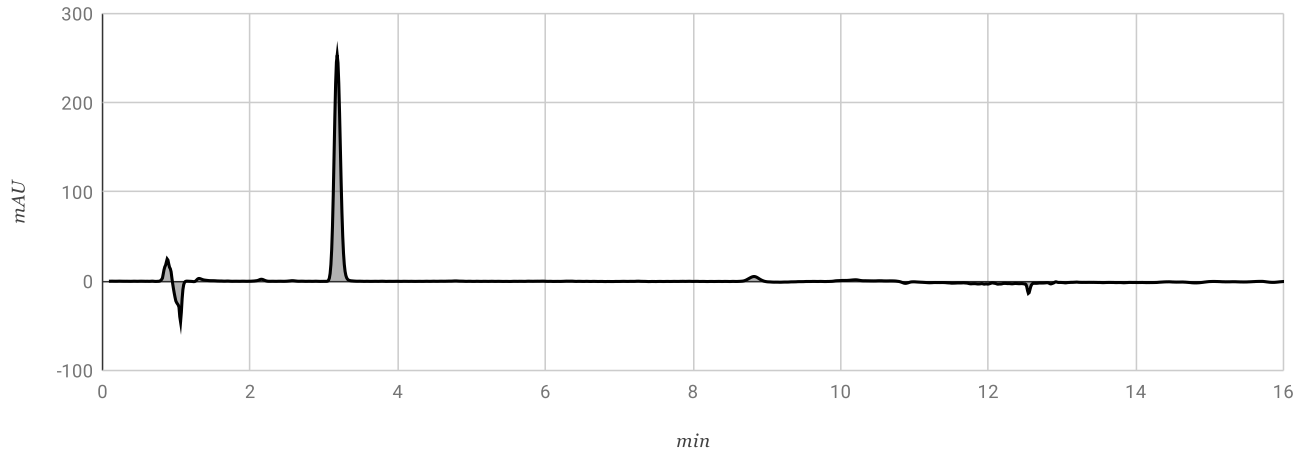




Sample Information

Sample Name:	19340-3.Axcentria	CBD Concentration:	6.65%
Method Filename:	HPLCalibration0807.lcm	* Potential CBD Concentration:	6.65%
Batch Filename:	12122019\Samples3.lcb	* Potential CBD Concentration represents total CBD and CBDA (with adjustments for mass conversion)	
Vial #:	9		
Injection Vol (uL):	15	THC Concentration:	0.00%
Date Processed:	12/12/2019	* Potential THC Concentration:	0.00%
Time Processed:	3:34:44 PM	* Potential THC Concentration represents total THC and THCA (with adjustments for mass conversion)	

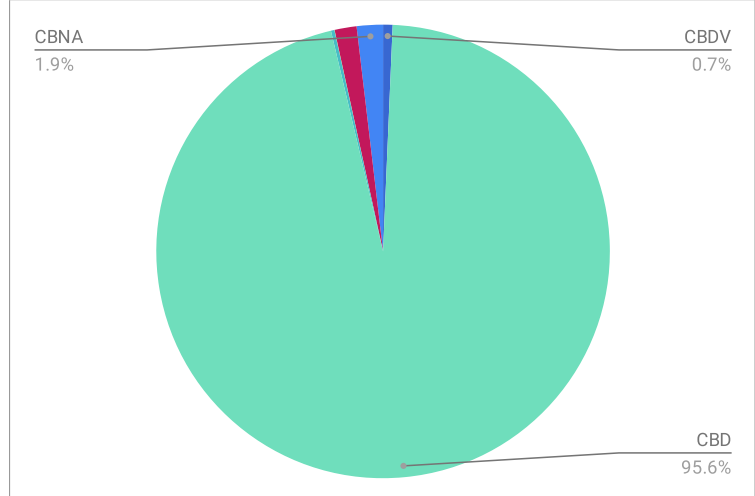
HPLC Chromatogram



Peak Table

Analyte	Retention Time	Conc. (%)
CBDV	2.152	0.047
CBD	3.178	6.653
CBG	--	ND
THCV	--	ND
CBDA	--	ND
CBGA	4.783	0.017
CBN	--	ND
THC	6.347	0.001
THCVA	--	ND
D8-THC	--	ND
CBL	--	ND
CBC	8.827	0.109
CBNA	10.201	0.13
THCA	--	ND

Relative Cannabinoid Concentrations



Centuria Foods, Inc.

Analysis Conducted By: Angelina Martinez