



PowerHub

Home Energy Storage System

FLEXIBLE

USE WITH NEW OR
EXISTING PV SYSTEM

EXPANDABLE

MODULAR DESIGN
AVAILABLE IN 2 SIZES

STACKABLE

CONNECT UP TO 4 UNITS
ACHIEVE UP TO 80KWH

The greenworks® PowerHUB™ is a compact modular Energy Storage System with a powerful Lithium-Ion (LFP) battery and hybrid inverter. PowerHub can be integrated with the utility grid, solar panels, and even a generator to provide reliable energy in all conditions.

TEL: 866-201-2120

EMAIL: powerhub@greenworkspower.com

greenworkspower.com

An intuitive mobile app

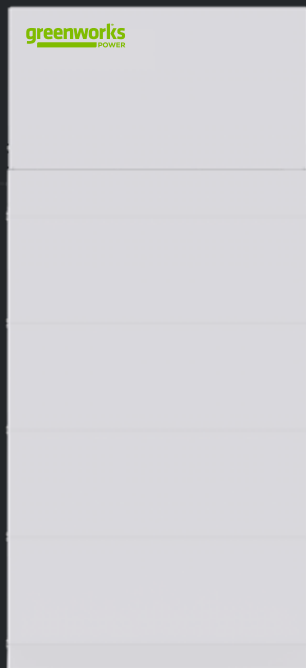
Monitor & manage your energy from anywhere.



Expandable Modular Design

For growing energy needs and easier installation.

Available in 10kWh or 20kWh, peak inverter efficiency 98%, includes integrated arc fault protection, and rapid shutdown transmitter.



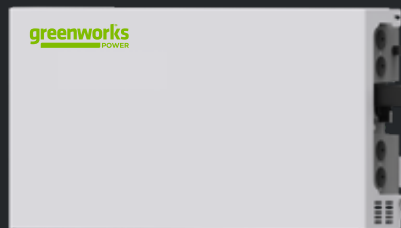
Power Hub

- Stack up to four 5 kWh batteries for 20kWh per unit
- Modular design for easier & faster installation
- Floor or wall mounted
- Long life & Safe LFP battery



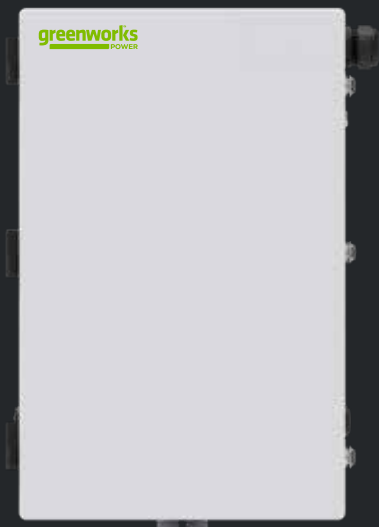
Smart Switch

- Supports up to 5 circuits
- Real-time load monitoring
- Auto control of high amp loads for quicker black-start recovery



7.6 kW Hybrid Inverter

- Up to 200% PV oversizing
- 3 MPPTs
- Maximum 16A PV input current
- Microgrid Supported



Backup Interface

- Supports 200A main panel
- 64A generator support
- Built-in energy management meter

Best-In-Class Power Output*

Delivers up to 7.6 kW continuous backup power.

Supports DC and AC input

Suitable for new and existing PV systems.

Allows up to 15.2 kW of solar input

3 Maximum Power Point Trackers (MPPT) for higher yields of solar power.

Integrated Transmitter

Enables easy installation of rapid shut down devices for safe PV array connections

Compact And Sleek Design

Can be installed indoors or outdoors, wall mounted or floor mounted

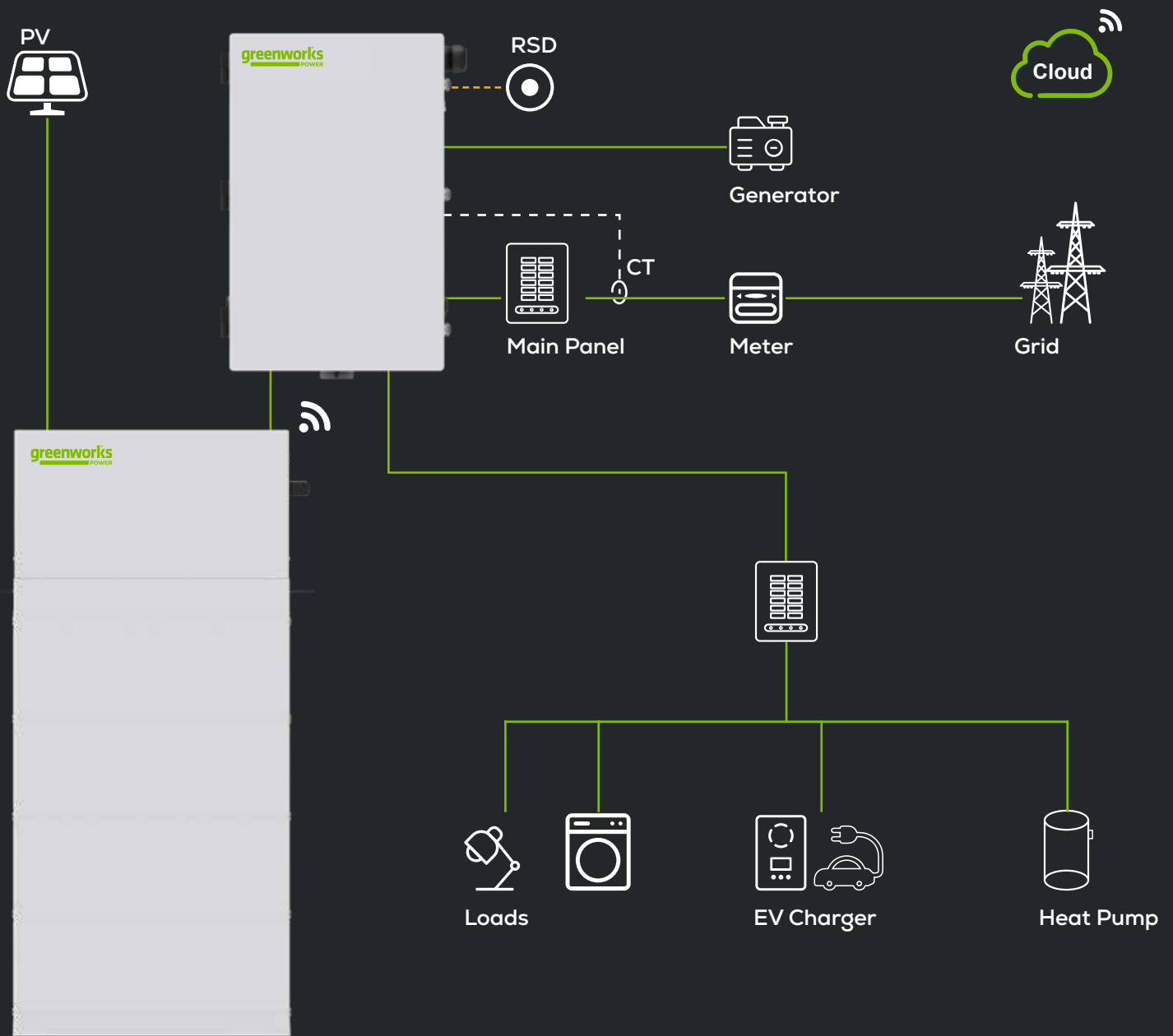
Stackable

Connect up to four units together to achieve up to 80kWh of usable storage capacity for whole-home power.

*During grid outages vs. competing models.

Flexible Home

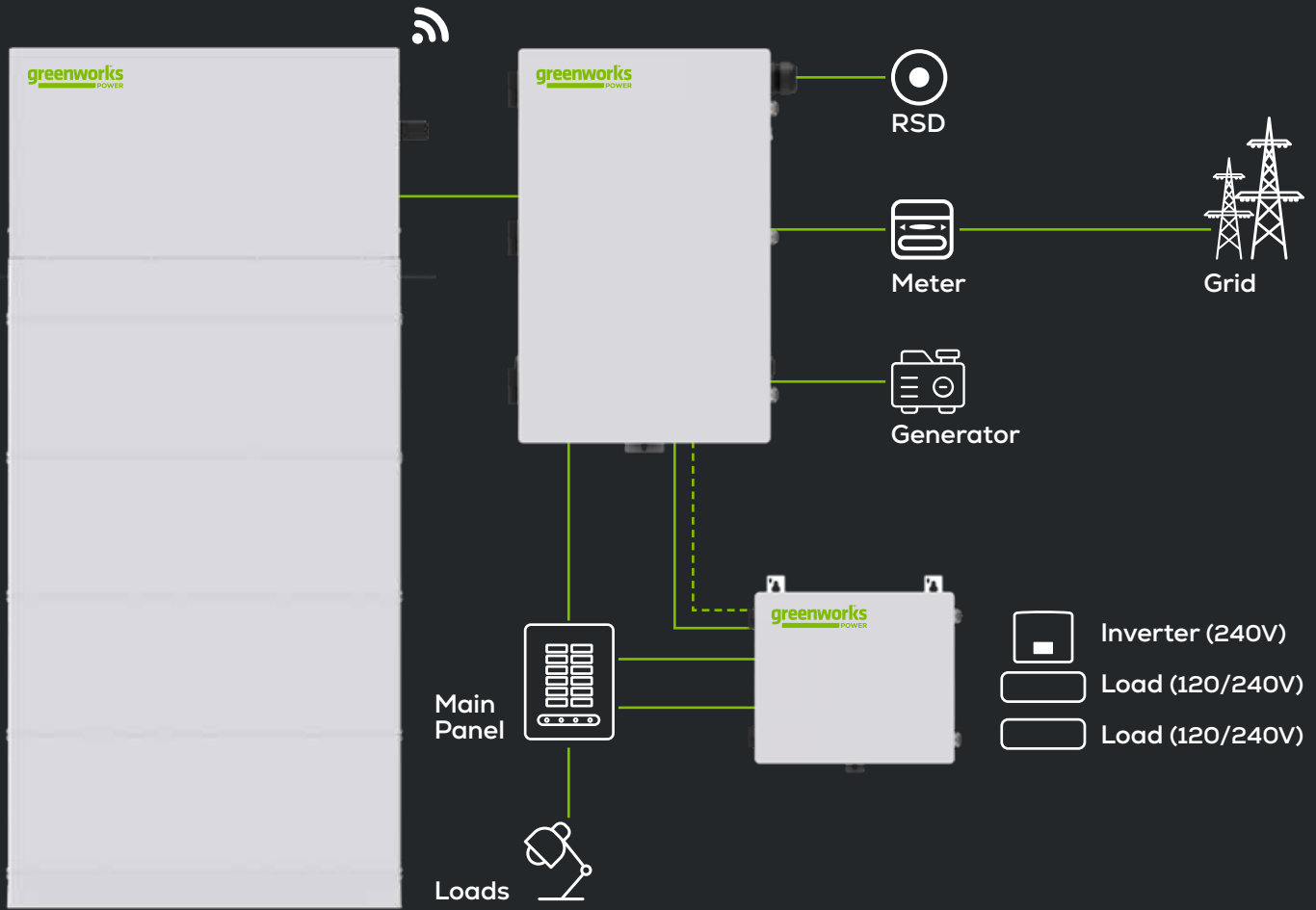
Backup Solution



Power Cable —————
Control Cable - - - - -

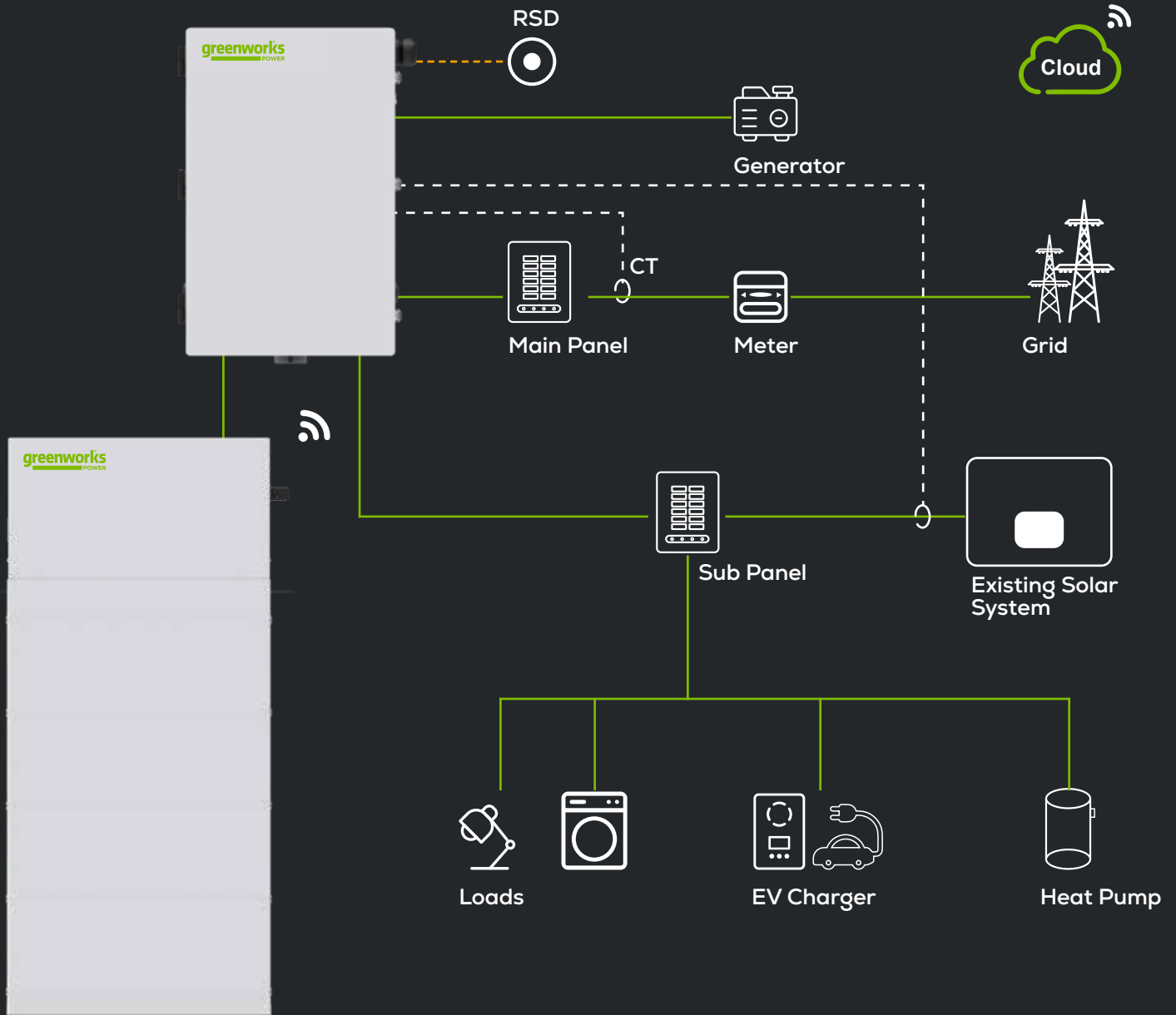
Smart Home Circuit Control

3x 240V / 1x 240V, 4x 120V



Flexible Home

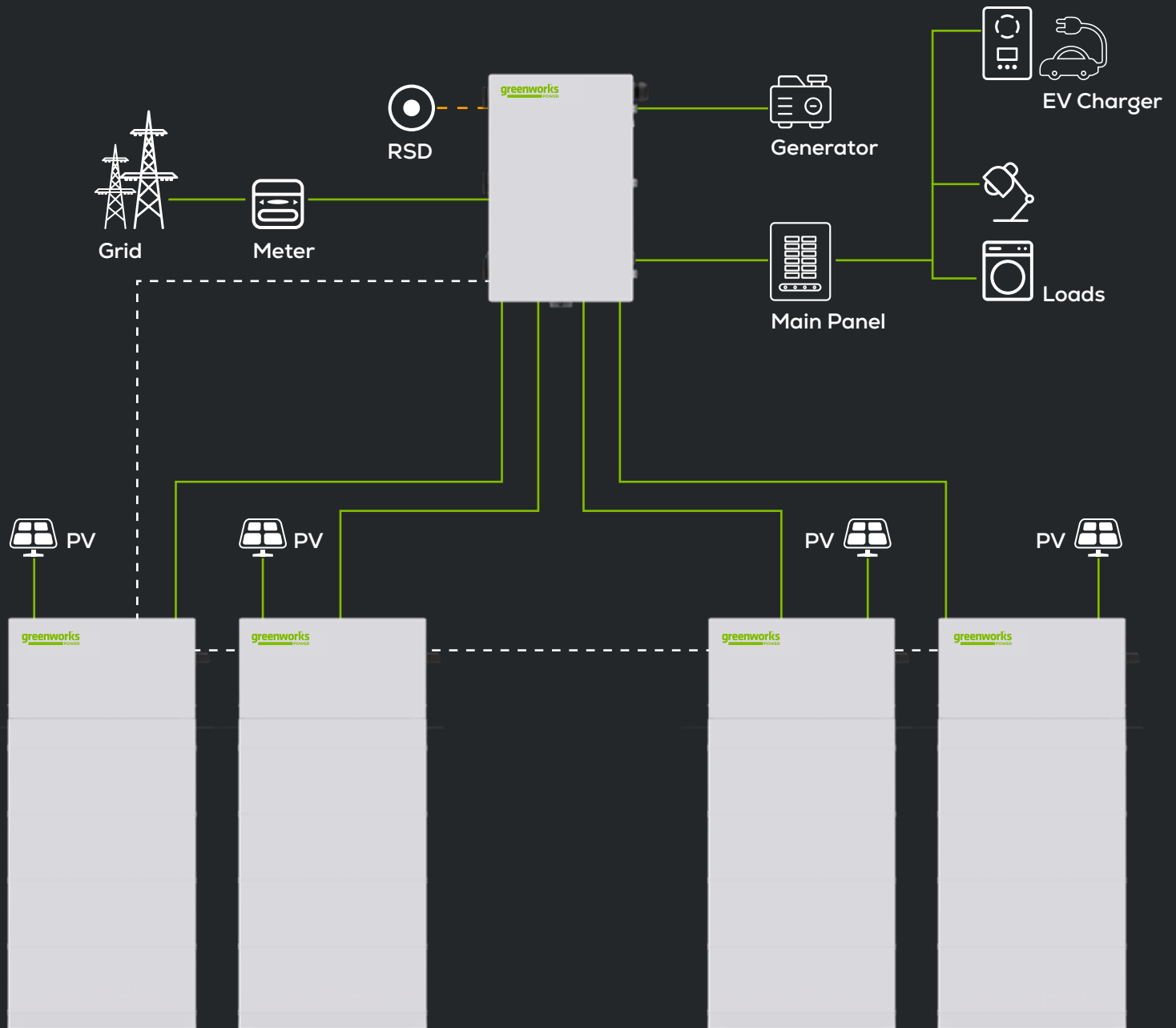
Backup Solution AC Coupled



Power Cable ———
Control Cable - - - - -

Energy Storage System

Parallel Operation



Power Cable —————
Control Cable - - - - -

PowerHub Hybrid Inverter

GWU-HYB-7.6TH

INPUT PV

Maximum recommended PV power [W]	15200
Maximum DC voltage [V] 550	550
Nominal DC operating voltage [V]	360
Maximum input current [A]	A: 16 / B: 16 / C: 16
Maximum short circuit current [A]	A: 20 / B: 20 / C: 20
MPPT voltage range [V]	90-500
Start input voltage [V]	120
No. of MPP trackers, Strings per MPP tracker	3, 1 / 1 / 1
DC disconnection switch	YES

INPUT/OUTPUT AC

Nominal / Maximum apparent AC power [VA]	7608 / 7608
Peak apparent AC power [VA] (10s, o -grid/backup)	13680 / 13680
Nominal AC voltage [V] / Nominal AC frequency [Hz]	240 / 50 , 60
Nominal AC current [A]	31.7
Displacement power factor	0.8 leading to 0.8 lagging
Total harmonic distortion (THD, rated power)	< 3%

INPUT/OUTPUT BAT

Maximum output power [W]	7600
Maximum charge / discharge current [A]	54
Reverse-polarity protection	YES

ADDITIONAL FEATURES

AFCI	YES
Revenue Grade Metering, ANSI C12.20	Optional
Rapid shutdown transmitter	Integrated PLC controller to RSD

EFFICIENCY

CEC weighted efficiency	97.50%
Maximum inverter efficiency	98.00%

POWER CONSUMPTION

Nighttime power consumption [W]	< 3
---------------------------------	-----

STANDARD

Safety	UL1741 SA, UL1741 SB, UL1699B, CSA - C22.2 No. 107.1-01, Canadian AFCI according to T.I.L. M-07
Emissions	FCC Part 15 Class B
Grid connection standards	IEEE1547, Rule 21, Rule 14, SRD V2.0 (HI)

INSTALLATION SPECIFICATIONS

Protection class	NEMA 4X
Operating temperature range [°F / °C]	-13 to +140 / -25 to +60
De-rating start temperature [°F / °C]	113 / 45 or above
Storage temperature range [°F / °C]	-13 to +167 / -25 to +75
Relative humidity [%]	0 to 95
Typical noise emission [dBA]	< 30
Over voltage category	IV (electric supply side), II (PV side)

GENERAL

Dimensions (W x H x D) [in / mm]	33.5 x 17.9 x 5.8 / 850 x 455 x 148
Weight [lb / Kg]	75 / 34
Communication interfaces	RS485, CAN, WIFI (optional) / 4G (optional), Dry Contact

PowerHub LFP Battery

GWU-BAT-5.0H

	T-BAT H 10.0	T-BAT H 20.0
MODEL		
Battery type	100Ah Lithium (LFP)	
Component	TBMS-MCS60060 + 2*TP-HS50	TBMS-MCS60060 + 4*TP-HS50
NOMINAL CHARACTER (10/20kWh)		
Voltage [V]	102.4	204.8
Operating voltage range [V]	90 - 116	180 - 232
Total energy [kWh]	10	20
Usable energy [kWh]	9	18
Maximum power [kWh]	5.5	11.1
Battery round-trip efficiency %	95%	
Maximum charge / discharge current [A]	54	
Cycle life (90% DOD)	6000 cycles	
Warranty (Details refer to greenworks Power warranty statement.)		
INSTALLATION SPECIFICATIONS		
Charge temperature range IF / °C	Charge: 32 to 127.4 / 0 to 53,	
Discharge temperature range IF / °C	Discharge: 14 to 127.4 / -10 to 53	
Storage temperature range IF / °C (3 months)	4 to 122 / -20 to 50	
Storage temperature range IF / °C (1 year)	32 to 104 / 0 to 40	
Relative humidity [%]	0 to 100	
STANDARD		
Certification	UN38.3, UL1973, UL9540, UL9540A	
Hazardous materials classification	Class 9	
GENERAL		
Dimensions (W x H x D) [in / mm]		
TBMS-MC60060 (BMS)	33.5 x 5.2 x 5.8 / 850 x 133 x 148	
TP-HS50 (BAT)	33.5 x 23.6 x 5.8 / 850 x 600 x 148	33.5 x 47.2 x 5.8 / 850 x 1200 x 148
Base	33.5 x 2.2 x 5.8 / 850 x 55 x 148	
Weight [lb / kg]	238 lb / 108 kg	476 lb / 216 kg

PowerHub Backup Interface

GWU-BI-1.0

GRID INPUT

Nominal AC input voltage [V]	120 / 240
Nominal AC frequency [Hz]	50 / 60
Maximum continuous AC input current [A]	160

OUTPUT TO MAIN PANEL IN GRID TIED OPERATION

Nominal AC output voltage [V]	120 / 240
Maximum AC input current [A]	160

OUTPUT TO MAIN PANEL IN BACKUP OPERATION

Nominal AC output voltage [V]	120 / 240
Imbalance compensation in backup operation [VA]	5000
Split phase imbalance output current [A]	41.7

INPUT FROM INVERTER

Maximum AC power [W]	7600
Maximum continuous input current @240V [A]	31.7
Maximum inverter input AC circuit breaker [A]	40 (optional)

GENERATOR

Maximum AC power [W]	15000
Maximum continuous input current [A]	63
Auto generator start	Yes

GENERAL

Dimensions (H * W * D) [in / mm]	27.8 * 17.7 * 5.9 / 706 * 450 * 151
Weight [lb / kg]	69.4 / 31.5
Energy meter accuracy	1%
Communication interfaces	RS485, CAN, Dry Contact
Cooling	Fan
Warranty	12 years

STANDARD

Safety	UL1741, CSA 22.2 NO.107
Emissions	FCC part 15 Class B

INSTALLATION SPECIFICATIONS

Altitude [ft / m]	9843 / 3000 MAX
Operating temperature range [°F / °C]	-13 to +140 / -25 to +60
Protection class	NEMA 3R
Typical noise emission [dB]	< 50

Smart Switch

GWU-SW-1.0

INPUT AC (Grid)

Nominal voltage [V]	120 / 240
Frequency [Hz]	60
Maximum number of input [240V + 120V / 240V]	5 / 3
Maximum overcurrent protection device [A]	80
Maximum continuous output current rating [A]	64

OUTPUT AC (Load)

Nominal voltage [V]	120 / 240
Frequency [Hz]	60
Maximum number of output [240V + 120V / 240V]	5 / 3
Maximum continuous output current rating [A]	64 / 32

STANDARD

Safety	UL1741, CSA - C22.2 No. 107.1-01
EMC	FCC part15 class B ICES003

ENVIRONMENT LIMIT

Protection class	NEMA 3R
Operating temperature range [°F (°C)]	-13 to +113 (-25 to +45)
Storage temperature range [°F (°C)]	-13 to +167 (-25 to +75)
Relative humidity	0% - 95%
Altitude [ft (m)]	9843 (3000) MAX
Noise emission (typical) [dB]	< 30
Mounting options	Wall mount (Indoors / Outdoors)

GENERAL

Dimensions with safety switch (W × H × D) [in / mm]	15.2 × 13.1 × 5.5 / 387 × 334 × 140
Weight with safety switch [lb / Kg]	15.2 / 6.9
Warranty [Years]	5