



FORUM AVENTURA



ORAL REPRESENTATIONS CANNOT BE RELIED UPON AS CORRECTLY STATING THE REPRESENTATIONS OF THE DEVELOPER. FOR CORRECT REPRESENTATIONS, MAKE REFERENCE TO THE DOCUMENTS FURNISHED BY THE DEVELOPER TO A BUYER.

Artist's conceptual rendering. See Legal Disclaimer.

fact / sheet



FORUM
AVENTURA

SITE ADDRESS

19790 West Dixie Highway, Aventura, FL 33180

CONSTRUCTION AND DEVELOPMENT TEAM

WD 19790 LLC., an affiliate of Prive Group in conjunction with CK Holding Group, and H&M Development

ARCHITECTS & DESIGN TEAM

Architect of Record - **Arquitectonica**

ARQUITECTONICA

Bernardo Fort-Brescia is a founding principal of Arquitectonica. The firm is known for sophisticated design and modern architecture with offices in New York, Los Angeles, Paris, Hong Kong, Shanghai, Manila, Dubai, Lima and Sao Paulo.

Interiors Architect - **Arquitectonica Interiors**

ARQUITECTONICA INTERIORS

Lorenzo Cobiella, AIA NCARB, LEED AP – Department Head, Arquitectonica Interiors

Landscape Architect - **Roberto Rovira, Inc.**

studio roberto rovira

Roberto Rovira is Chair of Landscape Architecture + Environmental and Urban Design at Florida International University (FIU). His most recent project Wynwood Greenhouse Park which will transform the outdoor recreational experience in Wynwood.

DEVELOPMENT TIMELINE

Construction is estimated to begin in the 2nd quarter of 2016 with anticipated completion in December, 2017.

TOWER FEATURES

- Approximately 94,776 ft² of area
- 12 floors
- Various floor configurations:
 - Conventional Offices – Individual office units located within a floor ranging from approximately 531 ft² to 1,294 ft²
 - Open Floor Offices – Open floor space
- Expansive lobby featuring high ceilings and indoor landscaping features by renowned landscape architect Roberto Rovira™
- Ground floor retail space
- State of the art design by world renowned architects Arquitectonica
- Central location, perpendicular to the Aventura Mall on West Dixie Highway
- Expansive views of the City of Aventura to the east and Enchanted lake to the west

TOWER AMENITIES

- Roof top sky lounge with conference room, kitchen, and meeting area
- Outdoor green space with breathtaking views and living landscape architecture by the renowned Roberto Rovira.

DEVELOPED BY



ORAL REPRESENTATIONS CANNOT BE RELIED UPON AS CORRECTLY STATING THE REPRESENTATIONS OF THE DEVELOPER. FOR CORRECT REPRESENTATIONS, MAKE REFERENCE TO THE DOCUMENTS FURNISHED BY THE DEVELOPER TO A BUYER.

This is not an offering for the purchase of a unit. An offering is made only by the prospectus and its exhibits (the "Condominium Documents") for Forum Aventura, a Condominium (the "Condominium") which is to be located in unincorporated Miami-Dade County, Florida, and no statements should be relied upon unless made in the Condominium Documents furnished by WD 19790, LLC, a Delaware limited liability company (the "Developer"). This is not intended to be an offer to sell, or solicitation to buy, a unit in the Condominium in any jurisdiction where prohibited by law. The information contained herein, including, without limitation, any and all artist's or architectural conceptual renderings, images, plans, floor plans, specifications, features, facilities, dimensions, measurements and amenities depicted, or otherwise described herein, are based upon current development plans, which are subject to change or abandonment without notice, and may not be relied upon. No guarantees or representations whatsoever are made that any such facilities, items, or improvements will be provided, or, if provided, will be of the same type, size, quality, location or nature as depicted or otherwise described herein. The Developer expressly reserves the right to make modifications, revisions and changes it deemed desirable in its sole and absolute discretion. All images and designs depicted herein are artist's conceptual renderings, which are based upon preliminary development plans, and are subject to change without notice. All such materials are not to scale and are shown solely for illustrative purposes. No guarantees or representations whatsoever are made that existing or future views of the Condominium and surrounding areas depicted by artist's conceptual renderings or otherwise described herein, will be provided or, if provided, will be as depicted or described herein.

The Condominium is being developed by the Developer, which was formed solely for such purpose. Any and all statements, disclosures and/or representations shall be deemed made by the Developer and not by any other party, and each buyer shall look solely to Developer (and no other party) with respect to any and all matters relating to the development and construction of the Condominium and with respect to the marketing and sales of units in the Condominium.

See sales brochure for complete legal disclaimers.

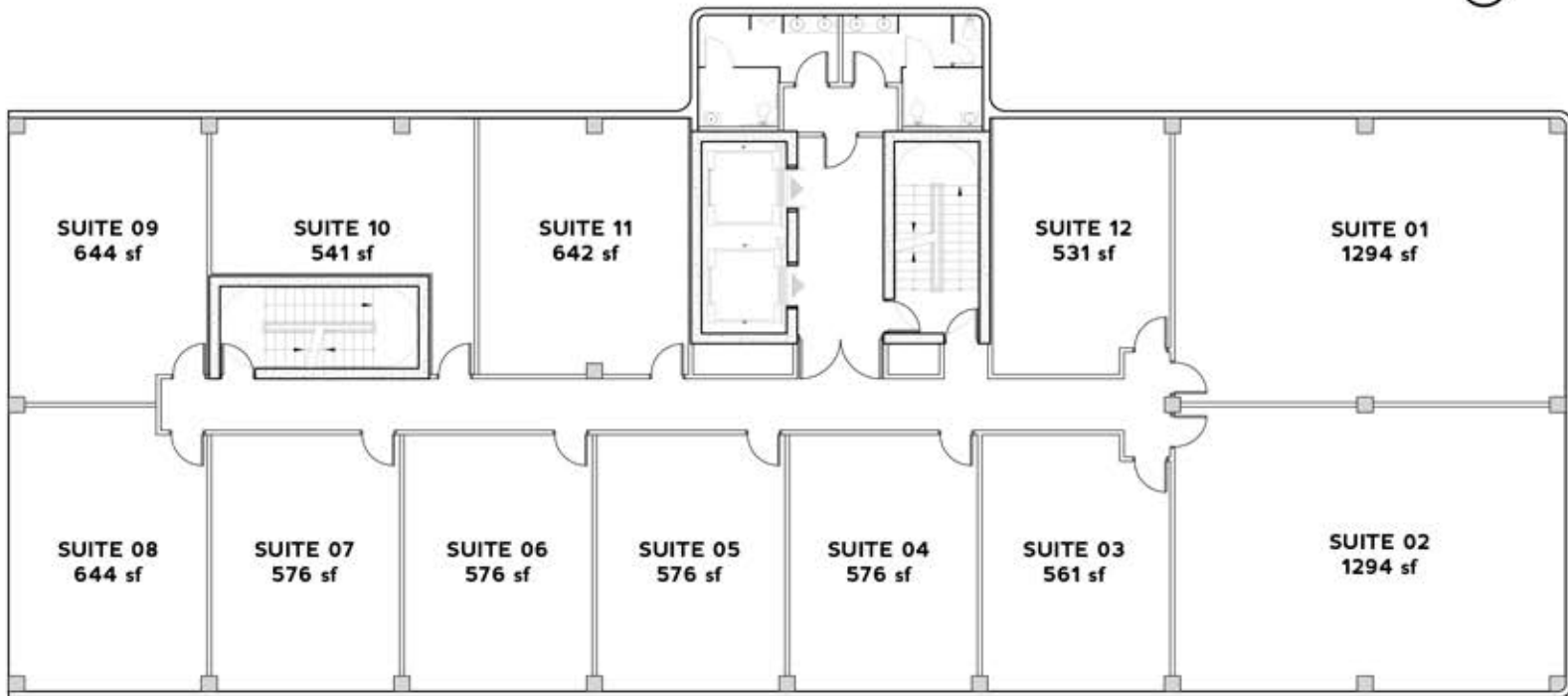
typical level

floorplans



FORUM
AVENTURA

Floors 3-6



ORAL REPRESENTATIONS CANNOT BE RELIED UPON AS CORRECTLY STATING THE REPRESENTATIONS OF THE DEVELOPER. FOR CORRECT REPRESENTATIONS, MAKE REFERENCE TO THE DOCUMENTS FURNISHED BY THE DEVELOPER TO A BUYER. Stated square footages and dimensions of the Units are based on measurements to the outside finished surface of exterior walls (including portions of the common elements of the Condominium located within these areas) and the centerline of interior demising walls or boundaries between Units, and they include an additional twenty-two percent (22.0%) "common area factor" to the determined size of each Unit (the "CAF Method"). Square footages and dimensions of the Units based on the CAF Method will vary from the stated square footages and dimensions of the Units that would be determined by using the description and definition of the "Unit", as set forth in the Declaration (which generally only includes the interior airspace between the perimeter walls and excludes interior structural components and other common elements). The CAF Method of measurement is generally used in sales and marketing materials and is provided to allow a prospective buyer to compare the Units with units in other commercial condominium projects that utilize the same method. For your reference, the square footage of the Unit, determined in accordance with the definition of the "Unit" set forth in the Declaration, is set forth as "Survey Area" in Exhibit "2" to the Declaration of Condominium. The structural walls, columns, and other common elements (including, without limitation, areas included in the "common area factor") are not part of the Unit. All square footages, dimensions and measurements are estimates which are based on preliminary plans and will vary with actual construction. All floor plans, specifications and other development plans are proposed and conceptual only, and are subject to change and will not necessarily accurately reflect the final plans and specifications.

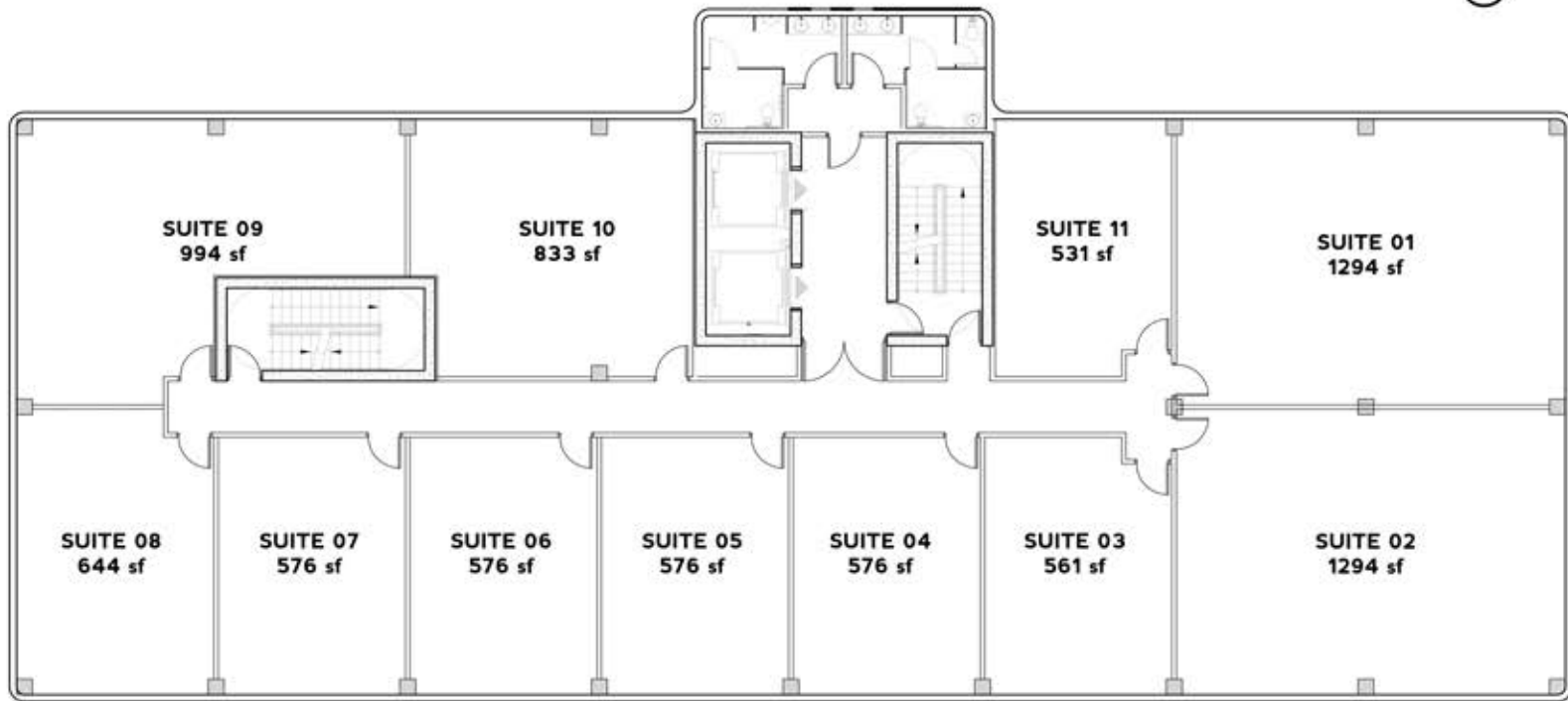
typical level

floorplans



FORUM
AVENTURA

Floors 7-PH



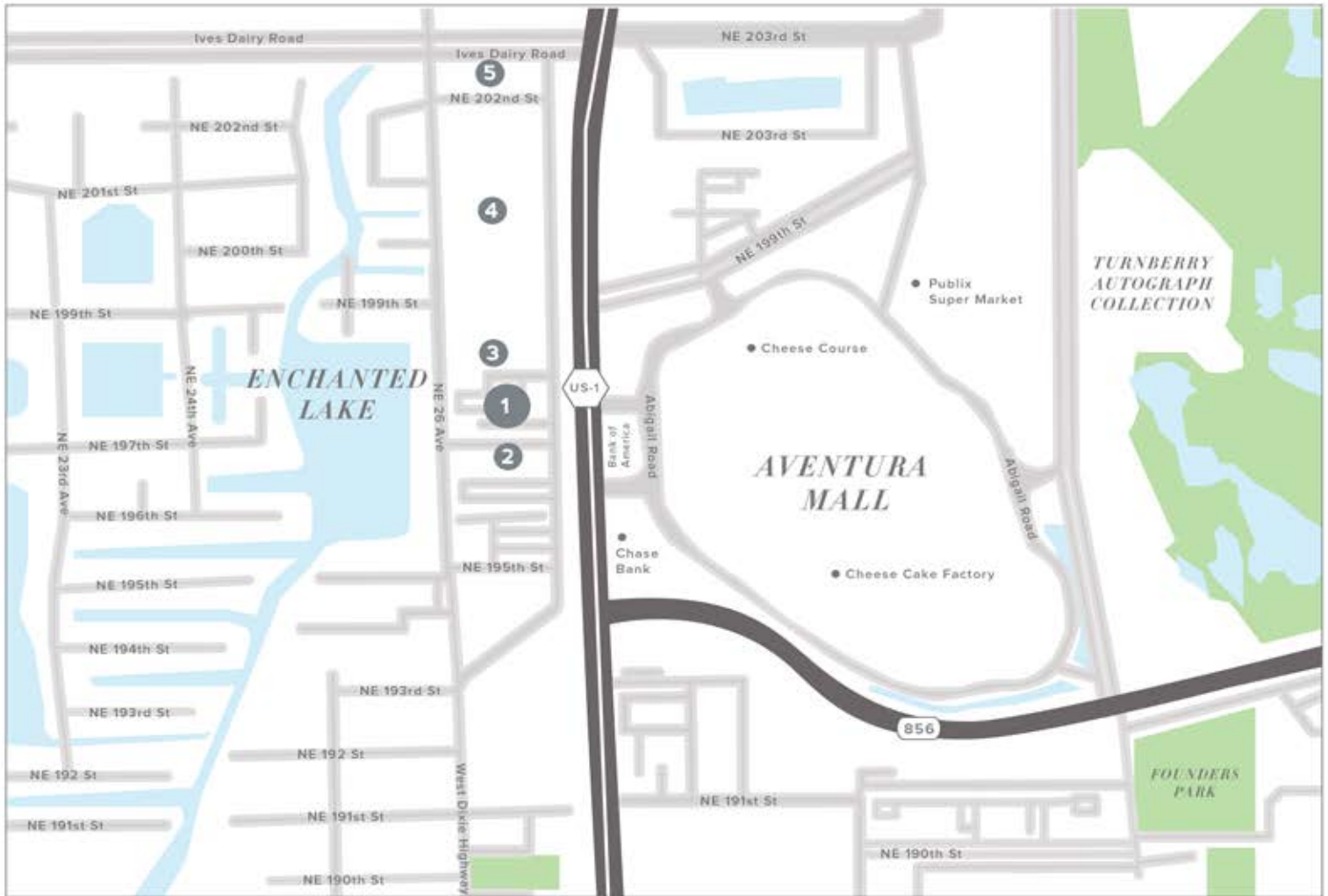
ORAL REPRESENTATIONS CANNOT BE RELIED UPON AS CORRECTLY STATING THE REPRESENTATIONS OF THE DEVELOPER. FOR CORRECT REPRESENTATIONS, MAKE REFERENCE TO THE DOCUMENTS FURNISHED BY THE DEVELOPER TO A BUYER. Stated square footages and dimensions of the Units are based on measurements to the outside finished surface of exterior walls (including portions of the common elements of the Condominium located within these areas) and the centerline of interior demising walls or boundaries between Units, and they include an additional twenty-two percent (22.0%) "common area factor" to the determined size of each Unit (the "CAF Method"). Square footages and dimensions of the Units based on the CAF Method will vary from the stated square footages and dimensions of the Units that would be determined by using the description and definition of the "Unit", as set forth in the Declaration (which generally only includes the interior airspace between the perimeter walls and excludes interior structural components and other common elements). The CAF Method of measurement is generally used in sales and marketing materials and is provided to allow a prospective buyer to compare the Units with units in other commercial condominium projects that utilize the same method. For your reference, the square footage of the Unit, determined in accordance with the definition of the "Unit" set forth in the Declaration, is set forth as "Survey Area" in Exhibit "2" to the Declaration of Condominium. The structural walls, columns, and other common elements (including, without limitation, areas included in the "common area factor") are not part of the Unit. All square footages, dimensions and measurements are estimates which are based on preliminary plans and will vary with actual construction. All floor plans, specifications and other development plans are proposed and conceptual only, and are subject to change and will not necessarily accurately reflect the final plans and specifications.

aventura

area developments



FORUM
AVENTURA



1 **FORUM AVENTURA**
Modern, Sleek Business Building

2 **STAYBRIDGE SUITES & TOWNHOMES**
Mixed use development with 175 rooms
& 24 townhomes

3 **HOLIDAY INN EXPRESS**
153 room Holiday Inn Express

4 **GABLES AVENTURA**
400 unit luxury rental community

5 **BEACON TOWER**
88,388 Sq Ft building with 75
office condos