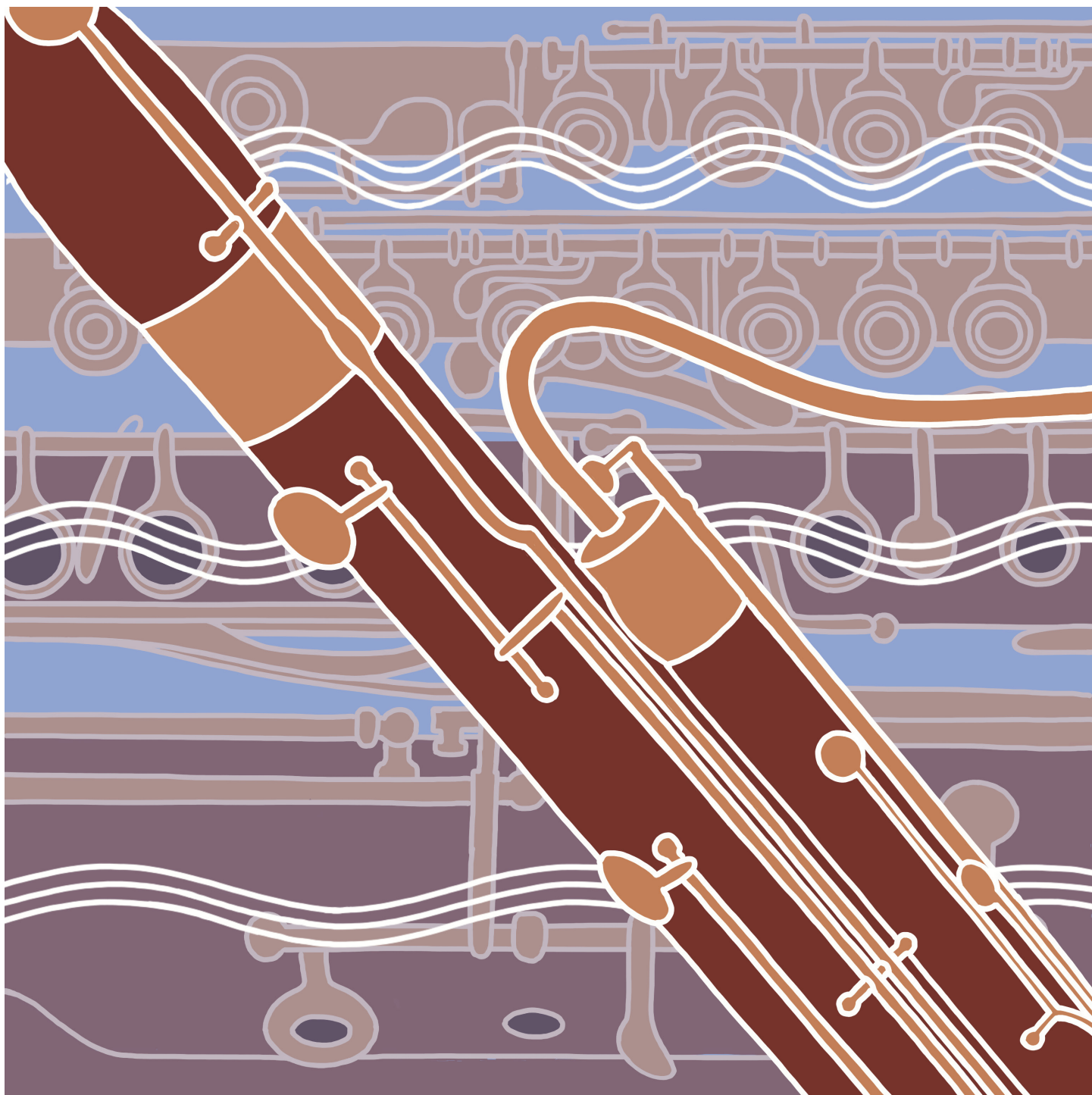


# Melody & Pitch: An Introduction to the Woodwind Family



WALT DISNEY CONCERT HALL

**LA Phil** GUSTAVO DUDAMEL  
MUSIC & ARTISTIC DIRECTOR

# Symphonies for Youth Melody & Pitch: An Introduction to the Woodwind Family

**SAT NOV 8 & 22 11AM**

Los Angeles Philharmonic  
Kinga Głowacka, conductor  
Kristi Brown-Montesano, host  
Callan Milani, scriptwriter  
Arturo Fernandez, Jr., stage manager  
LJ Curiel, lighting designer

## PROGRAM

Program to include selections from:

**BERNSTEIN** *Symphonic Dances* from *West Side Story*

**DVOŘÁK** *Symphony No. 9, "From the New World"*

**GERSHWIN** *Rhapsody in Blue*

**STILL** *Symphony No. 1, "Afro-American"*

**STRAVINSKY** *Petrushka*

**Terry RILEY** *In C*

## Support for Symphonies for Youth

Leadership support for the LA Phil's Learning and Community Initiatives is provided by Margaret A. Cargill Philanthropies, Anonymous (2), Barbara and Scott Bice, Ballmer Group, Max H. Gluck Foundation, Anne Akiko Meyers and Jason Subotky, The Eisner Foundation, The Hearthland Foundation, Kawanna and Jay Brown, The Rauch Family Foundation, The Rose Hills Foundation, John Mohme Foundation, Ms. Irene Mecchi, Estate of Joseph Garcia, Michael and Lori Milken Family Foundation, Rosenthal Family Foundation, The David and Linda Shaheen Foundation, and Snap Foundation.

Additional support for the LA Phil's Learning and Community Initiatives is provided by Pasadena Showcase House for the Arts, Maria Seferian, Sony Pictures Entertainment, Inc., The Rafael & Luisa de Marchena-Huyke Foundation, Los Angeles County Department of Arts and Culture, Canon Insurance Service, Joseph Drown Foundation, Alexandra S. Glickman and Gayle Whittemore, Faye Greenberg and David Lawrence, Alfred E. Mann Charities, James and Laura Rosenwald/Orinoco Foundation, and Audre Slater Foundation.

Support for Symphonies for Youth is provided by Canon Insurance Service. Leadership support for the LA Phil's Learning and Community Endowment Fund is provided by The Annenberg Foundation, the A. Jerrold Perenchio YOLA Endowment Fund, The Peggy Bergmann YOLA Endowment Fund, The Walt Disney Company, Los Angeles Philharmonic Committee, Max H. Gluck Foundation, The Rafael and Luisa de Marchena-Huyke Foundation, Carrie and Stuart Ketchum, George L. Cassat, Lee and Hope Landis Warner YOLA Student Fund, Leah Danberg, Norma D. Kayser Trust, Nancy and Leslie Abell, Kawanna and Jay Brown, Alfred E. Mann Charities, Mr. Gregory A. Adams, Mr. Kevin MacCarthy and Ms. Lauren Lexton, Miguel A. Navarro, Y&S Nazarian Family Foundation, Sue Tsao, Estate of Mary Calfas Janos, and the Ying Cai & Wann S. Lee Foundation.

## Pre-Concert Art Activations

Before each concert, families can immerse themselves in all-ages art activities that encourage imaginative play at the following locations:

**BP HALL**

**GARDEN LEVEL WEST**

**GARDEN LEVEL EAST**

**BLUE RIBBON GARDEN**

**KECK AMPHITHEATRE**

**FRIENDSHIP CIRCLE**

Activations end at 10:45am.



Scan to learn more about our conductor, creative team, and cast.

## PRE-CONCERT ACTIVITIES CREATIVE TEAM

Andrea Miller, producer and curator  
Cover artwork and illustrations by Eric O. Potma,  
with support from Vinita Vajramushti.

## WALT DISNEY CONCERT HALL HOUSE STAFF

Sergio Quintanar, Master Carpenter  
Marcus Conroy, Master Electrician  
Kevin F. Wapner, Master Audio/Video  
Greg Flusty, House Manager

The stage crew is represented by the International Alliance of Theatrical Stage Employees and Moving Picture Machine Operators of the United States and Canada, Local No. 33.

For more information about our Learning programs, please visit [laphil.com/learning](http://laphil.com/learning).

© 2025 Los Angeles Philharmonic. All Rights Reserved.

## Meet the Woodwind Family

Woodwind instruments come in a variety of shapes and sizes. Read below to meet the members of the woodwind family.



### Clarinet

The clarinet is a single-reed instrument, meaning that the reed vibrates against the mouthpiece when air is blown past it.

### Oboe

The oboe is a double-reed instrument, and sound is created when the two reeds vibrate against each other in the mouth when air is blown through them.



### Flute

Flutes are different from all the other woodwinds in the orchestra because they do not have reeds. Flutes are traditionally made of a silver alloy.

### Bassoon

The bassoon is also a double-reed instrument—about 4 ½ feet long—taller than most kids when it stands upright!

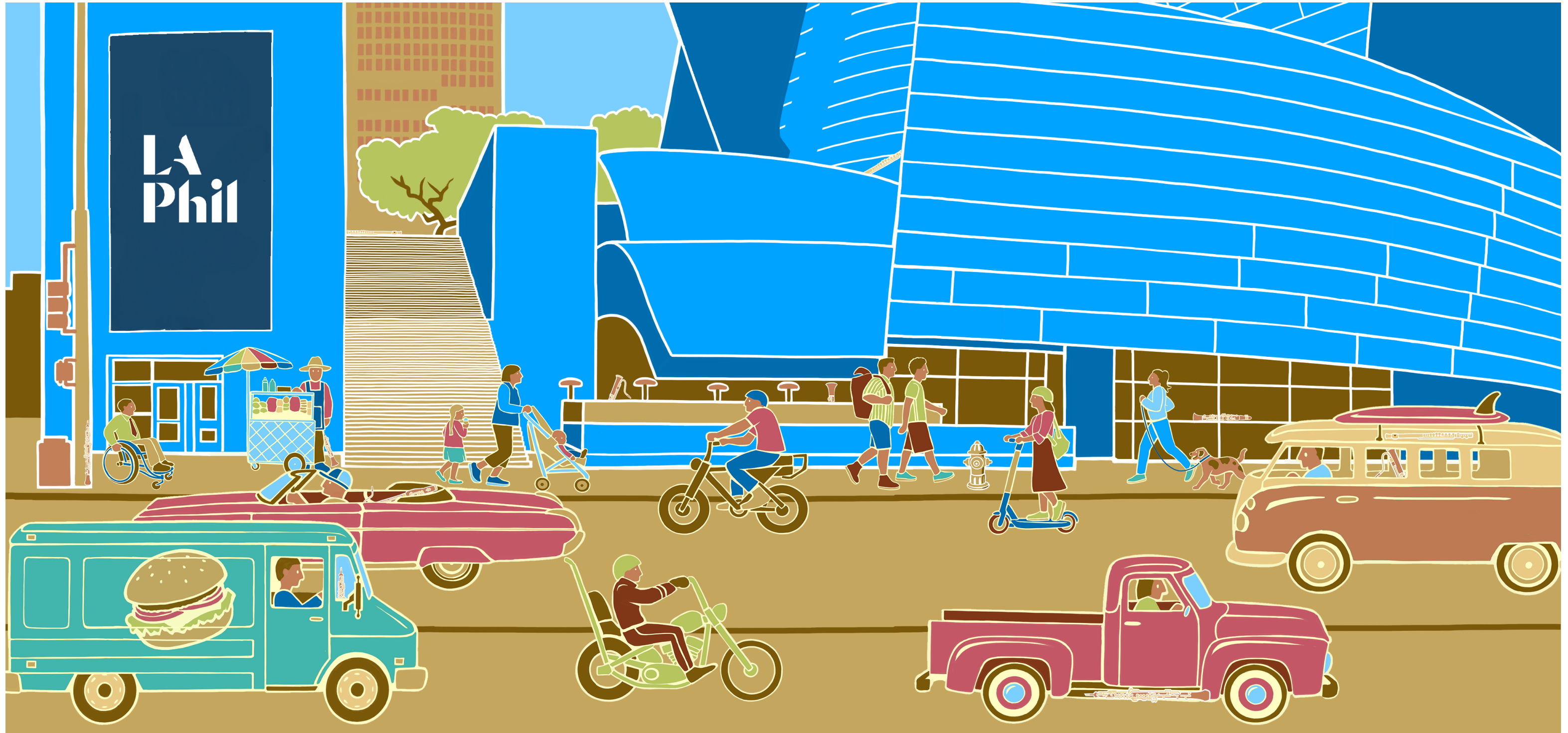


### Saxophone

The saxophone is special because it is the only woodwind made of brass. It is a single-reed instrument similar to the clarinet.

## Hidden Instruments: LA Cityscape

One of the most important parts of telling a story is setting the scene of where the events take place. A **tableau** is a type of scene in music that depicts all the characters and what they are doing individually as a part of a single place and event in time. Explore the street scene in front of Walt Disney Concert Hall and find all twelve of the hidden woodwind instruments.



# Learning Intervals: Somewhere Over the Rainbow

In music, the notes are arranged in **intervals**, or steps, skips, and leaps, which make each piece unique melodic shape. Review the lyrics to the song *Somewhere Over the Rainbow*. Then follow the lyrics below and trace the shape of the melody with your finger.

Somewhere over the rainbow, way up high,  
There's a land that I heard of once in a lullaby.

The image shows two musical staves. The first staff is a treble clef with a red bar containing '-where', an orange bar with 'o-', a yellow bar with 'rain-', and a green bar with '-bow'. The second staff is a treble clef with a blue bar containing 'Some-', a purple bar with 'way', and a red bar with 'up high'. The third staff is a treble clef with a blue bar containing 'a', a purple bar with 'land', a red bar with 'heard of', and a red bar with '-a-'. The fourth staff is a treble clef with a red bar containing 'There's', a red bar with 'that I', a red bar with 'once', a red bar with 'in a', and a red bar with 'lull-by'.



# Los Angeles Philharmonic Orchestra

Gustavo Dudamel  
Music & Artistic  
Director  
Walt and Lilly  
Disney Chair

Zubin Mehta  
Conductor Emeritus

Esa-Pekka Salonen  
Conductor Laureate

Rodolfo Barráez  
Assistant Conductor  
Ann Ronus Chair

John Adams  
John and  
Samantha Williams  
Creative Chair

Herbie Hancock  
Creative Chair for Jazz

**FIRST VIOLINS**  
[Position vacant]  
Principal  
Concertmaster  
Marjorie Connell  
Wilson Chair

Bing Wang  
Acting Concertmaster  
Barbara and Jay  
Rasulo Chair

[Position vacant]  
First Associate  
Concertmaster  
Ernest Fleischmann  
Chair

[Position vacant]  
Assistant  
Concertmaster  
Philharmonic  
Affiliates Chair

Rebecca Reale  
Deanie and Jay  
Stein Chair

Justin Woo  
Rochelle Abramson

Minyoung Chang  
I.H. Albert  
Sutnick Chair

Tianyun Jia  
Jordan Koransky  
Ashley Park  
Katherine Woo  
Weilu Zhang

**SECOND VIOLINS**  
Melody Ye Yuan  
Principal

Mark Kashper  
Associate Principal  
Isabella Brown  
Assistant Principal

Kristine Whitson  
Johnny Lee  
Ingrid Chun  
Jin-Shan Dai  
Miika Gregg  
Chao-Hua Jin  
Jung Eun Kang  
Vivian Kukiel  
Nickolai Kurganov  
Varty Manouelian  
Emily Shehi  
Michelle Tseng  
Gabriel Esperon\*

**VIOLAS**  
[Position vacant]  
Principal  
John Connell Chair

Ben Ullery  
Associate Principal  
Jenni Seo  
Assistant Principal

Dana Lawson  
Richard Elegino  
Ingrid Hutman  
Michael Larco  
Hui Liu  
Meredith Snow  
Leticia Oaks Strong\*  
Minor L. Wetzel  
Bradley Parrimore\*  
Pasadena Showcase  
House for the Arts  
LA Phil Resident  
Fellow Chair

[Position vacant]  
Assistant  
Concertmaster  
Philharmonic  
Affiliates Chair

**CELLOS**  
Robert deMaine  
Principal  
Bram and Elaine  
Goldsmith Chair

Ben Hong  
Associate Principal  
Sadie and Norman  
Lee Chair

Dahae Kim  
Assistant Principal

Jonathan Karoly\*  
David Garrett  
Barry Gold  
Jason Lippmann  
Gloria Lum  
Linda and Maynard  
Brittan Chair

Zachary Mowitz  
Serge Oskotsky  
Brent Samuel  
Keeon Guzman\*

**BASSES**  
Christopher Hanulik  
Principal  
Diane Disney Miller  
and Ron Miller Chair

Kaelan Decman  
Associate Principal

Oscar M. Meza  
Assistant Principal

David Allen Moore  
Ted Botsford  
Jory Herman  
Brian Johnson  
Peter Rofé  
Matthew Peralta\*

**FLUTES**  
Denis Bouriakov  
Principal  
Virginia and Henry  
Mancini Chair

Catherine  
Ransom Karoly  
Associate Principal  
Mr. and Mrs. H.  
Russell Smith Chair

Elise Shope Henry  
Mari L. Danihel Chair

Sarah Jackson  
**Piccolo**  
Sarah Jackson

**OBOES**  
Ryan Roberts  
Principal  
Carol Colburn  
Grigor Chair

Marion Arthur Kuszyk  
Associate Principal

Anne Marie Gabriele

**English Horn**  
[Position vacant]

**CLARINETS**  
Boris Allakhverdyan  
Principal  
Michele and Dudley  
Rauch Chair

[Position vacant]  
Associate Principal

Andrew Lowy  
Taylor Eiffert  
**E-Flat Clarinet**  
Andrew Lowy

**Bass Clarinet**  
Taylor Eiffert

**BASSOONS**  
Whitney Crockett  
Principal

[Position vacant]  
Associate Principal  
Ann Ronus Chair

Michele Grego  
Evan Kuhlmann

**Contrabassoon**  
Evan Kuhlmann  
Mark Houston Dalzell  
and James Dao-Dalzell  
Chair for Artistic Service  
to the Community

**HORNS**  
Andrew Bain  
Principal  
John Cecil Bessell Chair

David Cooper  
Associate Principal

Gregory Roosa  
Alan Scott Klee Chair

Amy Jo Rhine  
Loring Charitable  
Trust Chair

Elyse Lauzon  
Ethan Bearman  
Elizabeth Linares  
Montero\*  
Nancy and Leslie  
Abell LA Phil Resident  
Fellow Chair

**TRUMPETS**  
Thomas Hooten  
Principal  
M. David and Diane  
Paul Chair

James Wilt  
Associate Principal  
Nancy and Donald  
de Brier Chair

Christopher Still  
Ronald and Valerie  
Sugar Chair

Jeffrey Strong

**TROMBONES**  
David Rejano  
Cantero  
Principal  
Koni and Geoff Rich  
Chair

James Miller  
Associate Principal  
Judith and Thomas  
L. Beckman Chair

Paul Radke

**Bass Trombone**  
John Lofton  
Miller and Goff  
Family Chair

**TUBA**  
Mason Soria  
Principal

**TIMPANI**  
Joseph Pereira  
Principal  
Cecilia and Dudley  
Rauch Chair

David Riccobono  
Assistant Principal

**PERCUSSION**  
Matthew Howard  
Principal  
Wesley Sumpter  
Assistant Principal

James Babor  
David Riccobono  
Jeremy Davis\*

**KEYBOARDS**  
Joanne Pearce Martin  
Katharine Bixby  
Hotchkis Chair

**HARP**  
Emmanuel Ceysson  
Principal  
Ann Ronus Chair

**LIBRARIANS**  
Stephen Biagini  
Benjamin Picard  
KT Somero

**CONDUCTING FELLOWS**  
Kinga Glowacka  
Ana María  
Patiño-Osorio  
José Salazar  
Miguel Sepúlveda

\* Judith and Thomas  
L. Beckman  
LA Phil Resident  
Fellow

+ On sabbatical

The Los Angeles  
Philharmonic string  
section utilizes  
revolving seating on  
a systematic basis.  
Players listed  
alphabetically change  
seats periodically.

The musicians of  
the Los Angeles  
Philharmonic are  
represented by  
Professional  
Musicians Local 47,  
AFM.

# LA Phil Junior Patron

## Join Junior Patrons Today!

With support from the LA Phil Affiliates, the Junior Patrons program enhances the concert-going experience for children who attend our performances, helping them feel included in our LA Phil family.

### Benefits Include:

- Junior Patron commemorative item
- Junior Patron membership card with 10% discount at the LA Phil Store and The Bowl Store
- An exclusive member-only experience for a Youth concert
- Invitation to an exclusive event at the Hollywood Bowl or The Ford, including refreshments
- Year-round listing on the Walt Disney Concert Hall and Hollywood Bowl websites and acknowledgement at Symphonies for Youth concerts



## More Symphonies for Youth at Walt Disney Concert Hall

**JAN 17 & 24, 2026**

### Sensory Symphony

Feel the music of Sibelius, Saint-Saëns, Ellen Reid, and more in your bones, breath, and heart, as we explore new ways of being present and connecting to the world through our senses.



**MAR 14 & 28, 2026**

### The Conductor

Like train conductors guide travelers, musical conductors transport us to exciting places using rhythm, melody, and imagination. See how it's done in works by John Adams, Arturo Márquez, and more!

**Get Your Tickets Today!**

[laphil.com/sfy](http://laphil.com/sfy)

English/Español 323 850 2000 |     

Programs, artists, prices, and dates subject to change.

Ticket limits may apply. All sales are final.



**LA Phil**  
GUSTAVO DUDAMEL  
MUSIC & ARTISTIC DIRECTOR