

1988 Mercedes-Benz 560SL

This 1988 560 SL ran and drove well with some other issues of note. Video capabilities were not possible with this inspection. On the exterior I noted there are some minor scratches on the tonneau cover. There are minor misc scratches around the vehicle. Most too small to see in photos. One small ding on the passenger side was noted. The wipers and all of the exterior lights worked as designed. The soft top went up and down as designed. Owner stated the hard top is buried in their garage. The wheels are off of a later model Mercedes.

Inside I noted some light wear on the driver's seat bolster. There is light wear on the passenger seat. The blower motor did not work consistently, so I could not fully test the air conditioning or heater. I noted no smoke or odd odors inside. The windows worked as designed. The gauges worked as designed.

The brake fluid looks old and dirty and should be flushed. The rear resonator has been deleted. The audio system has been modified. The engine is seeping some oil from the underside. There were no drips at time of inspection. This area should be cleaned off and rechecked to verify source of leak or leaks.

I noted a light stumble when cold at idle. Other than that, I found no issues on the test drive. The engine had plenty of power and there were no misfires or smoking. The transmission shifted as designed with no harsh engagement or slipping. The steering was responsive and the suspension was firm and the vehicle handled well. There were no abnormal vibrations or odd noises. The brakes were firm with no pulsation felt.

See below and pictures for more info.

Vehicle Info	
Year - 1988	
Make - Mercedes-Benz	
Model - 560SL	
Mileage - 93976	
Transmission - Automatic	
VIN Number - wdbba48d7ja084235	
Interior - Leather	
Interior Color - Tan	
Body Color - Gold	
Engine - 8 Cylinder	
Drive Type - Rear Wheel Drive	
Fuel Type - Gas	

Exterior	
Wiper Blades	✓
Windshield Washer	✓
Body Alignment	✓
Scratches	✗
There are some minor scratches on the tonneau cover. There are minor misc scratches around the vehicle. Most too small to see in photos.	
Dings	✗
One small ding on the passenger side was noted.	
Dents	✓
Paint Condition	✓
Body Seals	✓
Rust	✓
Exterior Lights	✓
Door Mirrors	✓
Bumpers	✓
Side Moldings	✓
Convertible Top	✓
Frame Damage	✓
Glass	✓
Body Filler?	✓
Hood	✓
Doors	✓
Floors	✓
Rockers	✓
Quarter Panels	✓
Chrome	✓


Interior	
Steering Wheel	✓
Horn	✓
Cruise Control	✓
Seat Condition	✗
I noted some light wear on the drivers seat bolster. There is light wear	

Mechanical	
Air Filter	✓
Battery Condition	✓
Charging System	✓
Cooling Fan Condition	✓
Radiator Cap Sealing Properly	✓
Hoses	✓
Radiator	✓
Engine Coolant	✓
Coolant Leaks	✓
Belts	✓
Power Steering	✓
Steering Fluid	✓
Engine Oil	✓
Engine Fluid Leaks	✗
The engine is seeping some oil from the underside. There were no drips at time of inspection. This area should be cleaned off and rechecked to verify source of leak or leaks.	
Transmission Fluid	✓
Transmission Leaks	✓
Brake System	✗
The brake fluid looks old and dirty and should be flushed.	
Brake Fluid Leaks	✓
Differential leaks	✓
Muffler System	✗
The rear resonator has been deleted.	
CV Joints and Axles	✓
Shocks and bushings	✓
Ball Joints and Tie Rods	✓
Modifications	✗
The audio system has been modified. The the wheels are off of a later model Mercedes.	

Road Test	
Road Test	✓
Engine Performance	✗
I noted a light stumble when cold at idle.	
Transmission performance	✓
Differential Performance	✓
Wheel Bearing Performance	✓
Braking Performance	✓
Suspension Performance	✓
Steering Performance	✓
Engine Starting	✓
TIRES/WHEELS	
Spare Tire	✓
Tire Manufacturer	
Driver's Front - Pirelli	
Passenger's Front - Pirelli	

on the passenger seat.	
Seat Belts	✓
Clock	✓
Radio/Navigation	✓
Inner Door Panels	✓
Power Locks	✓
Window Switches	✓
Window Function	✓
Center Console	✓
Dash	✓
Sun Visors	✓
Dash Lights	✓
Dash Gauges	✓
Air Conditioning	✗
The blower motor did not work consistently, so I could not full test the air conditioning.	
Heater	✗
The blower motor did not work consistently, so I could not full test the heater.	
Rear Defroster	✓
Carpet	✓
Floor Mats	✓
Cigarette Use	✓
Unusual Odors	✓
Headliner	✓
Blower Motor	✗
Blower motor is intermittent and would not activate during inspection.	
Interior Trim	✓
Inner Trunk	✓

Driver's Rear - Pirelli
Passenger's Rear - Pirelli
Tire Size
Driver's Front - 205/55/18
Passenger's Front - 205/55/18
Driver's Rear - 205/55/18
Passenger's Rear - 205/55/18
Tire Condition
Driver's Front - No Issues
Passenger's Front - No Issues
Driver's Rear - No Issues
Passenger's Rear - No Issues
Wheel Condition
Driver's Front - No Issues
Passenger's Front - No Issues
Driver's Rear - No Issues
Passenger's Rear - No Issues
Tire Tread
Driver's Front - 9/32
Passenger's Front - 9/32
Driver's Rear - 9/32
Passenger's Rear - 9/32



10/32 OR MORE
Tires have plenty of tread! (standard)
8/32 OR MORE
Tires have plenty of tread! (low profile)
5/32 TO 7/32
Tires will need replacement soon!
4/32 OR LESS
Tires need replacement!

1



2



3























































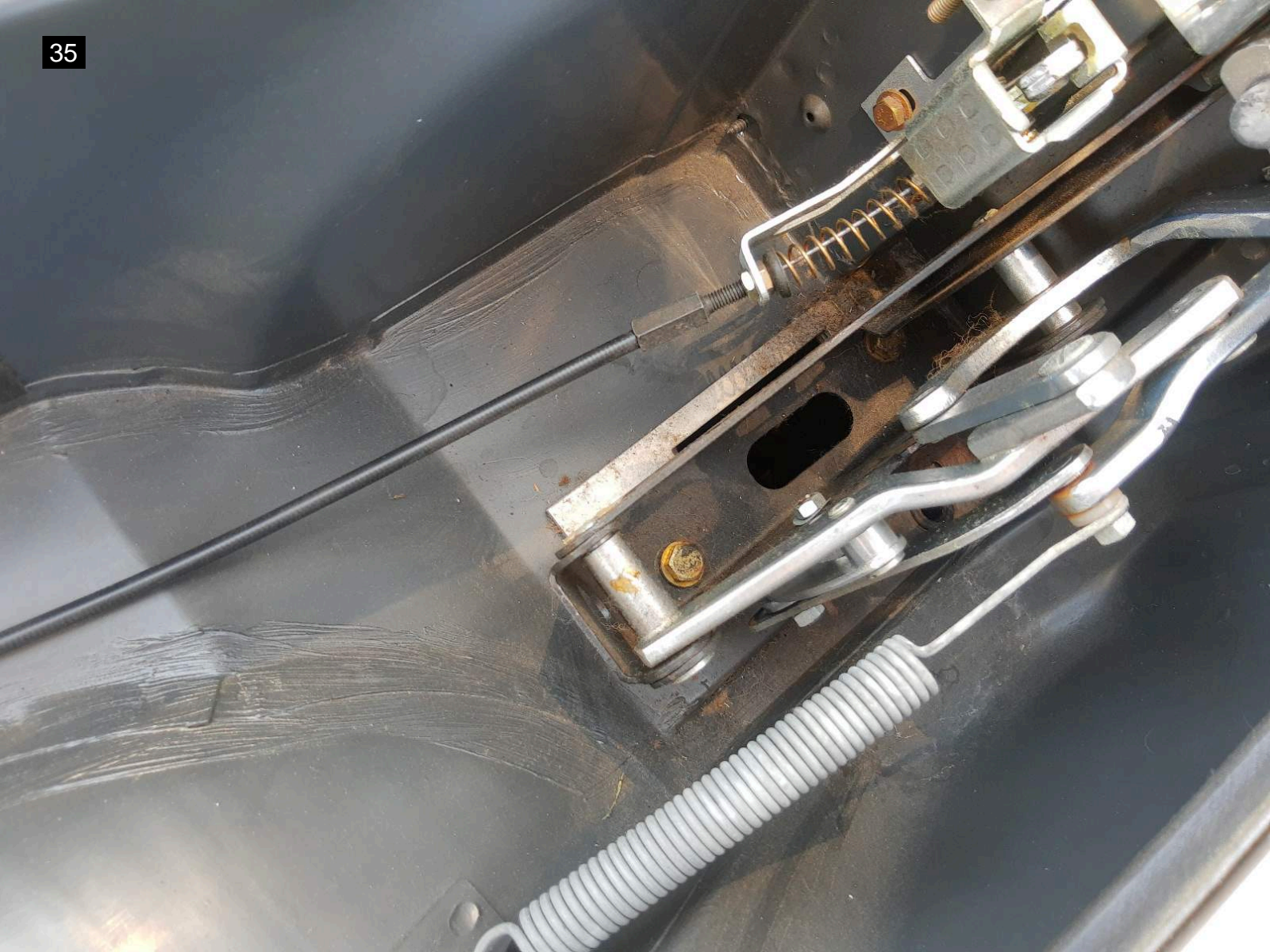
























































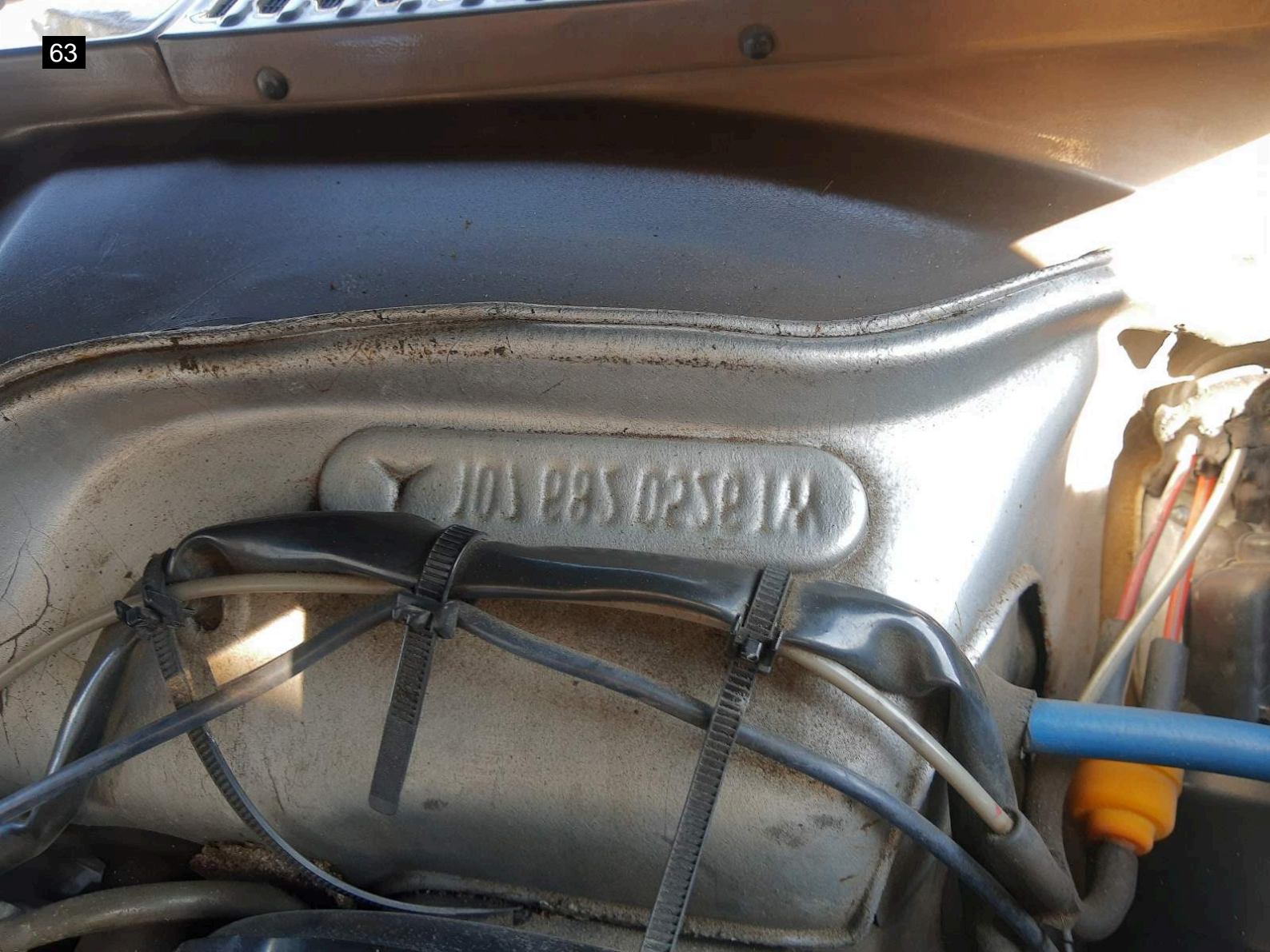










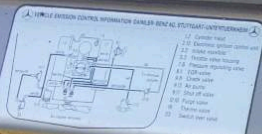






Use Only Mercedes-Benz/Original Designed To
Protect Aluminium Parts: (see Owner's Manual)

BEHR AVO
MERCEDES BENZ
107 500 2603
21.558 00291



VEHICLE EMISSION CONTROL INFORMATION (DAINER-BENZ AG, STUTTGART-UNTERTEURHEIM)

DISPLACEMENT 1.900 cc (115.4 cu in) 1000 cc (61.0 cu in) 1000 cc (61.0 cu in)

MAXIMUM POWER 100 kW (136 hp) 100 kW (136 hp) 100 kW (136 hp)

MAXIMUM TORQUE 170 Nm (125 lb-ft) 170 Nm (125 lb-ft) 170 Nm (125 lb-ft)

VEHICLE EMISSION CONTROL INFORMATION (DAINER-BENZ AG, STUTTGART-UNTERTEURHEIM)

DISPLACEMENT 1.900 cc (115.4 cu in) 1000 cc (61.0 cu in) 1000 cc (61.0 cu in)

MAXIMUM POWER 100 kW (136 hp) 100 kW (136 hp) 100 kW (136 hp)

MAXIMUM TORQUE 170 Nm (125 lb-ft) 170 Nm (125 lb-ft) 170 Nm (125 lb-ft)

VEHICLE EMISSION CONTROL INFORMATION (DAINER-BENZ AG, STUTTGART-UNTERTEURHEIM)

DISPLACEMENT 1.900 cc (115.4 cu in) 1000 cc (61.0 cu in) 1000 cc (61.0 cu in)

MAXIMUM POWER 100 kW (136 hp) 100 kW (136 hp) 100 kW (136 hp)

MAXIMUM TORQUE 170 Nm (125 lb-ft) 170 Nm (125 lb-ft) 170 Nm (125 lb-ft)

8702538
107048
71 70
375
112534
440
440
440

AUTOMOTIVE AIR CONDITIONER
CONFORMS TO SAE J 639
KLAUSHAUSE FÜR AUTOMOBILE
AUSFÜHRUNG NACH SAE J 639
DAINER-BENZ AG
STUTTGART-UNTERTEURHEIM
100 kW (136 hp)

CAUTION! / Attention!
CAR IS EQUIPPED WITH
SAE J 639 Approved
SRS
AIRBAG AND SEAT BELT TENSIONERS
Autobus / Airbag de sécurité
SEE OWNER'S MANUAL
VOIR LE MANUEL D'ENTRETIEN

WDBBA48D7JA084235

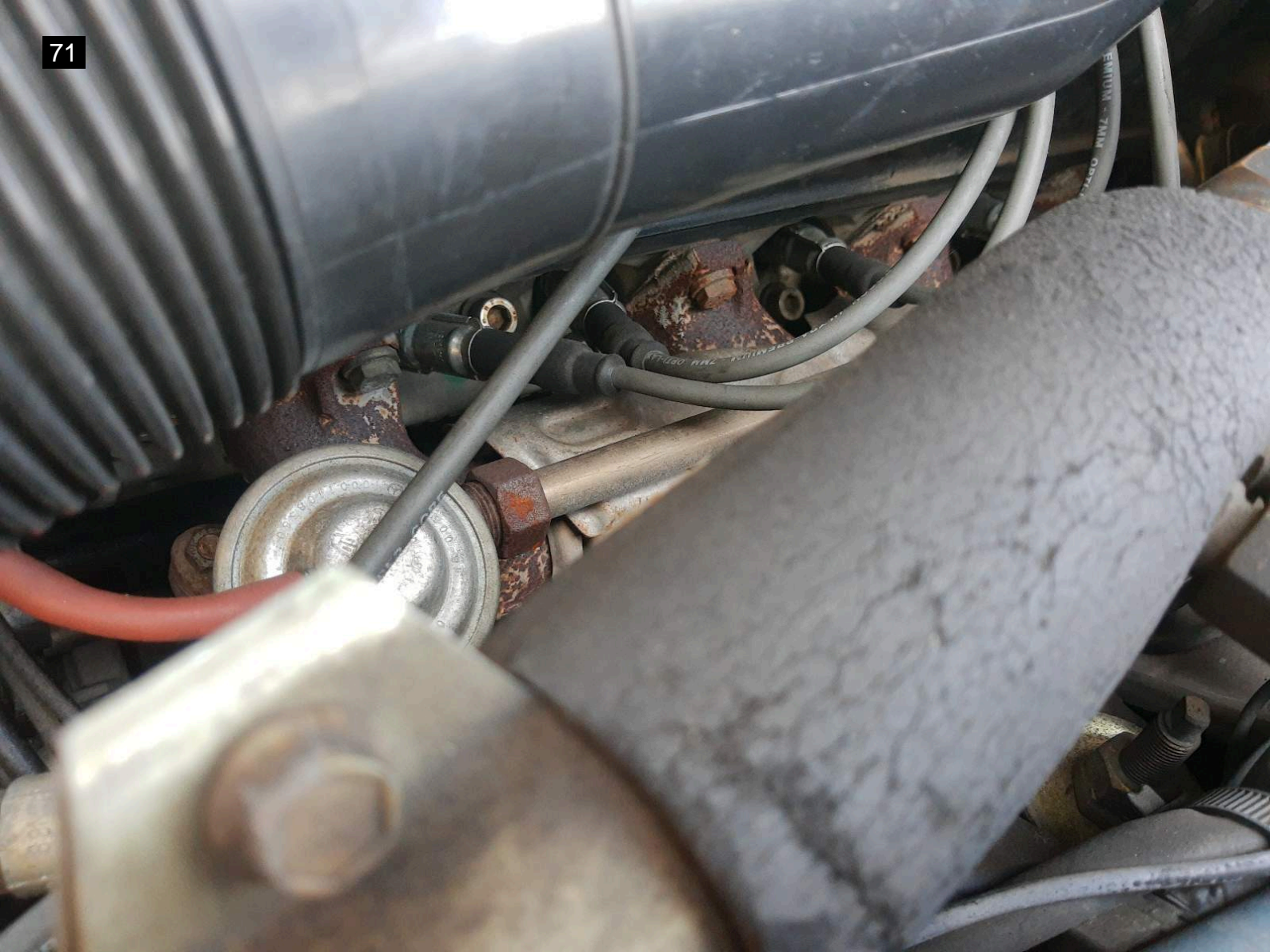




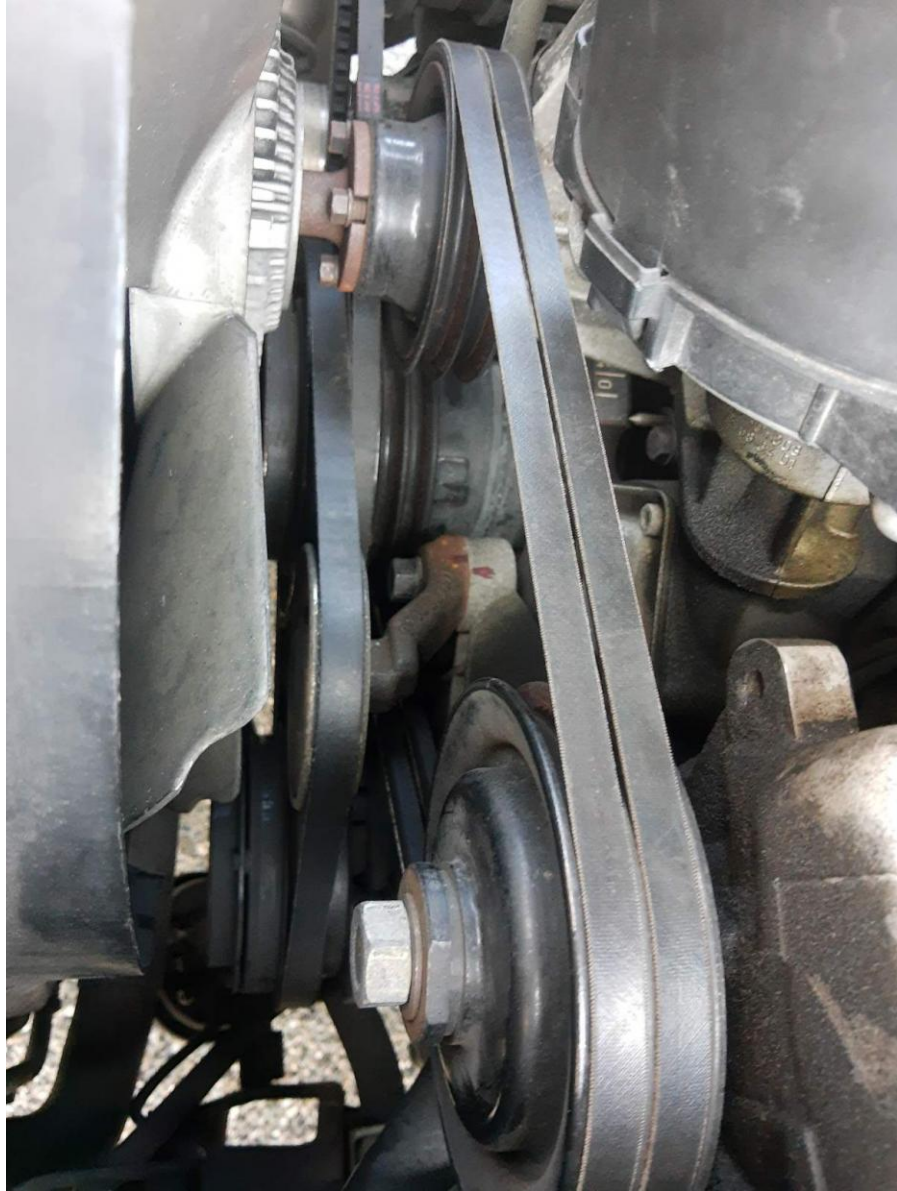






















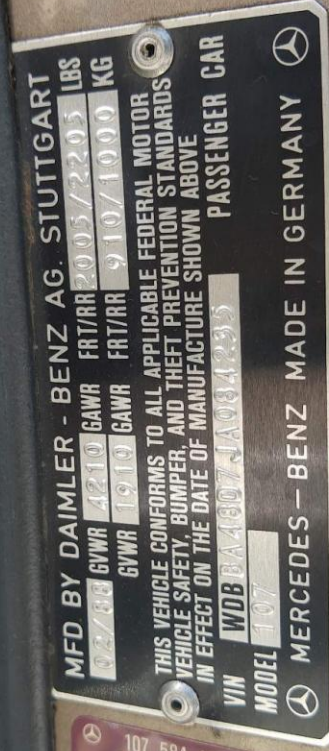












107 584 12 39 A

VEHICLE CAPACITY WEIGHT 480 LBS
SEATING CAPACITY 2
RECOMMENDED TIRE SIZE 205/65 VR 15
COLD TIRE PRESSURE FRONT 29 PSI REAR 35 PSI
FOR ADDITIONAL INFORMATION SEE INSIDE FILLER PIPE COVER

MFD BY DAIMLER - BENZ AG. STUTTGART

GVWR 2210	GAWR 1510	FRT/RR 9/13/10000	LBS
GVWR 4870	GAWR 3300	FRT/RR 9/13/10000	KG

THIS VEHICLE CONFORMS TO ALL APPLICABLE FEDERAL MOTOR VEHICLE SAFETY, BUMPER, AND THEFT PREVENTION STANDARDS IN EFFECT ON THE DATE OF MANUFACTURE SHOWN ABOVE

VIN WDB123456789012345
MODEL 107

MERCEDES - BENZ MADE IN GERMANY



Note for Image 65:
wdbba48d7ja084235