

1973 Chevrolet C10



Today I inspected a very nice white 73 Chevrolet c10. This truck is definitely a head turner. Don't miss your chance to make this your daily driver, or even a full show truck.

Exterior

Starting with the exterior, it is in very good shape. The paint on this c10 is in very good shape with custom pinstripes and very minimal chipping. The glass all along the exterior of the vehicle is in excellent shape and does not show any chips or cracks. The headlights, tail lights, and indicator lights are all clear and free of any major scratches. The wheels on the vehicle are in excellent shape and do not show any signs of curb rash. The exterior lights all worked during the inspection. This is a show quality truck, the underside is just as clean as the paint, with no detail over looked.

Interior

Moving to the interior of the truck, it also shows very well. The seat is extremely comfortable and the aftermarket carbon fiber gauges make it very easy to keep an eye on key engine compartment like charging, oil pressure, speed, and rpm. This truck is equip with full sound that includes two subs under the bench seat along with two 6x9s in the center console that sound amazing, stereo comes with aux. All along the interior, the carpet is tightly adhered to the body of the car. All of the

electronic components function as designed. I did not observe there to be any odd odors present inside the interior.

Mechanical

Onto the mechanical side of things, the vehicle is in very nice shape. It has a crate engine, full length headers, th400 automatic transmission, and sounds as good as it looks. Looking underneath the front and rear of the vehicle I observed that there were no leaks or seepage present. The top side of the motor is clean and dry. The vehicle stood at a normal operating temperature throughout the duration of my inspection. All four tires have a good amount of tread depth on them and show an even wear pattern indicating that vehicle alignment is within specifications.

Road Test

The c10 has been lowered with all new bushings and it rides amazing, has good power and shifts well. Please see below for pics, and more info.

Vehicle Info	
Year - 1973	
Make - Chevrolet	
Model - C10	
Mileage - 95545	
Transmission - Automatic	
VIN Number - CCY143Z154372	
Interior - Vinyl	
Interior Color - Black	
Body Color - White	
Engine - 8 Cylinder	
Drive Type - Rear Wheel Drive	
Fuel Type - Gas	

Exterior	
Wiper Blades	✓
Body Alignment	✓
Scratches	✓
Dings	✓
Dents	✓
Paint Condition	✗
The paint on this c10 is in very good shape with custom pinstripes and very minimal chipping.	
Body Seals	✓
Rust	✓
Exterior Lights	✓
Door Mirrors	✓
Bumpers	✓
Side Moldings	✓
Frame Damage	✓
Glass	✓
Hood	✓
Doors	✓
Floors	✓
Rockers	✓
Quarter Panels	✓
Chrome	✓


--

Mechanical	
Air Filter	✓
Battery Condition	✓
Charging System	✓
Cooling Fan Condition	✓
Radiator Cap Sealing Properly	✓
Hoses	✓
Radiator	✓
Engine Coolant	✓
Coolant Leaks	✓
Belts	✓
Power Steering	✓
Steering Fluid	✓
Engine Oil	✓
Engine Fluid Leaks	✗
The engine is seeping some oil from the underside. There were no drips at time of inspection. This area should be cleaned off and rechecked to verify source of leak or leaks.	
Transmission Fluid	✓
Transmission Leaks	✓
Brake System	✓
Brake Fluid Leaks	✓
Differential leaks	✓
Muffler System	✓
CV Joints and Axles	✓
Shocks and bushings	✓
Ball Joints and Tie Rods	✓
Modifications	✓

Road Test	
Road Test	✓
Engine Performance	✓
Transmission performance	✓
Differential Performance	✓
Wheel Bearing Performance	✓
Braking Performance	✓
Suspension Performance	✓
Steering Performance	✓
Engine Starting	✓

Interior		
Steering Wheel		✓
Horn		✓
Seat Condition		✓
Seat Belts		✓
Radio/Navigation		✓
Inner Door Panels		✓
Window Function		✓
Center Console		✓
Dash		✓
Sun Visors		✓
Dash Lights		✓
Dash Gauges		✓
Air Conditioning		✓
Heater		✓
Carpet		✓
Floor Mats		✓
Cup Holders		✓
Headliner		✓
Blower Motor		✓
Interior Trim		✓
Inner Trunk		✓

TIRESe/WHEELS		
Spare Tire		✓
Tire Manufacturer		
Driver's Front - Hankook		
Passenger's Front - Hankook		
Driver's Rear - Hankook		
Passenger's Rear - Hankook		
Tire Size		
Driver's Front - 275/60/15		
Passenger's Front - 275/60/15		
Driver's Rear - 275/60/15		
Passenger's Rear - 275/60/15		
Tire Condition		
Driver's Front - No Issues		
Passenger's Front - No Issues		
Driver's Rear - No Issues		
Passenger's Rear - No Issues		
Wheel Condition		
Driver's Front - No Issues		
Passenger's Front - No Issues		
Driver's Rear - No Issues		
Passenger's Rear - No Issues		
Tire Tread		
Driver's Front - 12/32		
Passenger's Front - 12/32		
Driver's Rear - 12/32		
Passenger's Rear - 12/32		



10/32 OR MORE

Tires have plenty of tread!
(standard)

8/32 OR MORE

Tires have plenty of tread!
(low profile)

5/32 TO 7/32

Tires will need replacement soon!

4/32 OR LESS

Tires need replacement!

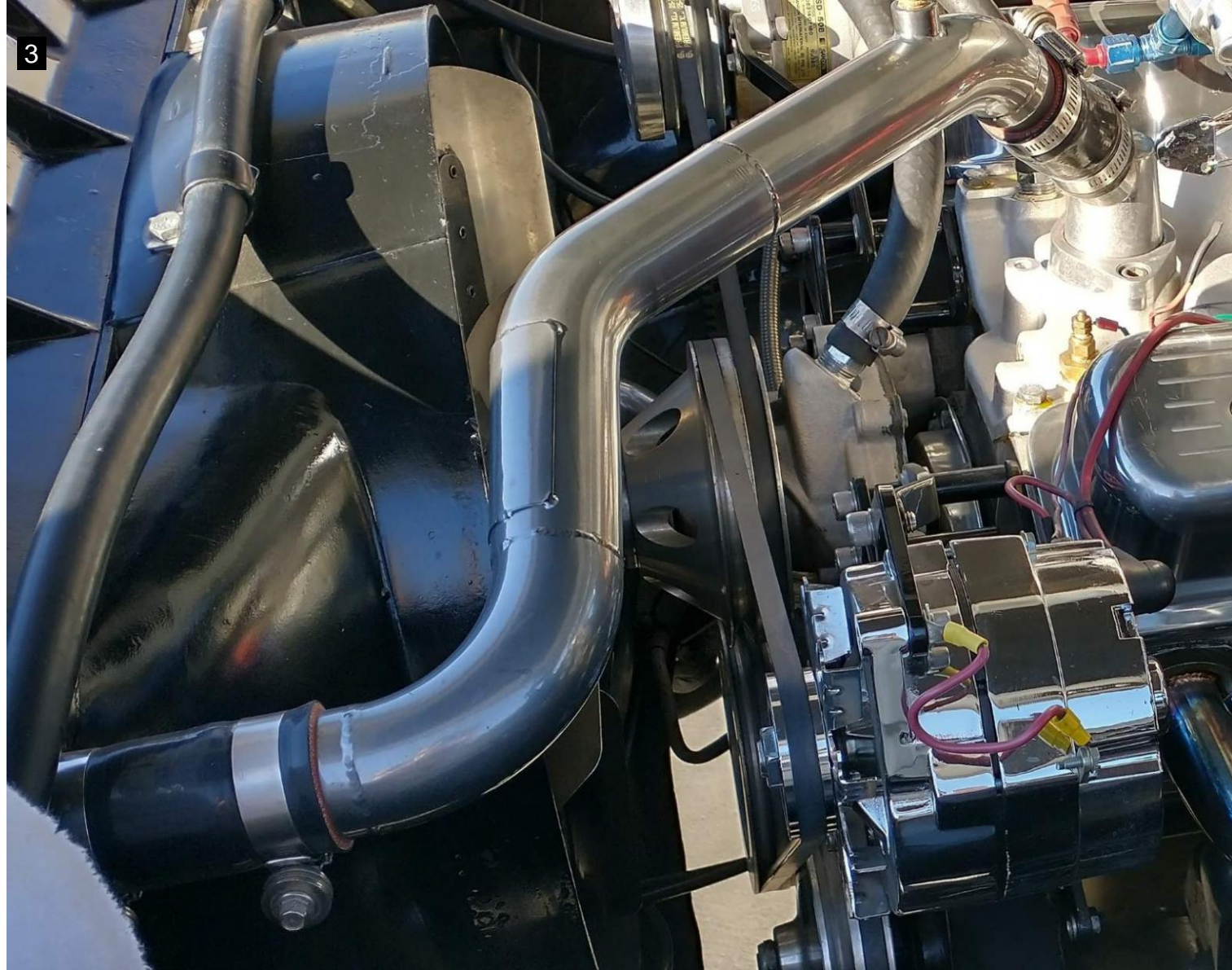
1



2

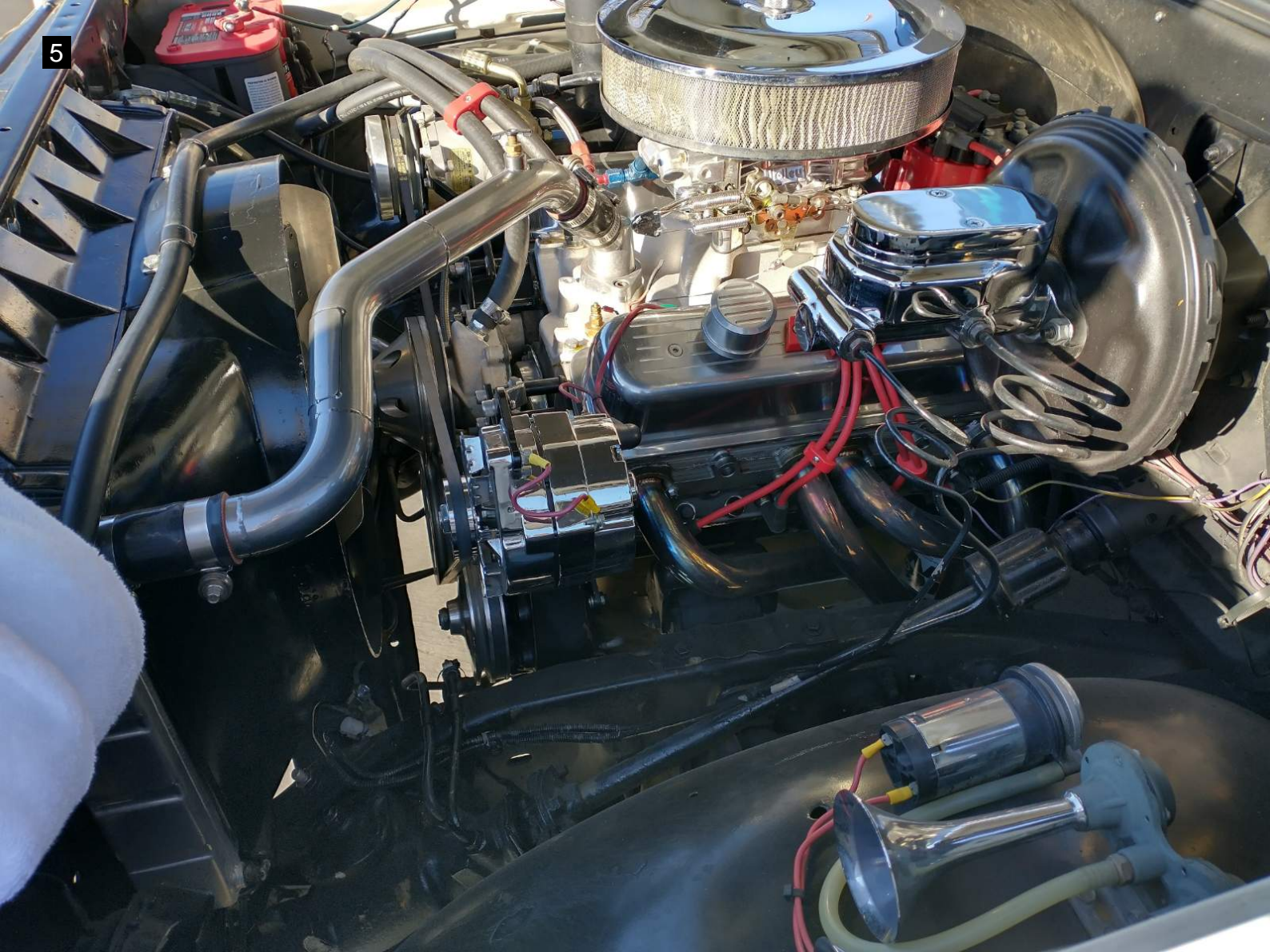


3





5











SAFETY  FLO-LITE
AS-2 26 0
SOLID TEMPERED
1 2 8
DOT 18 MS01

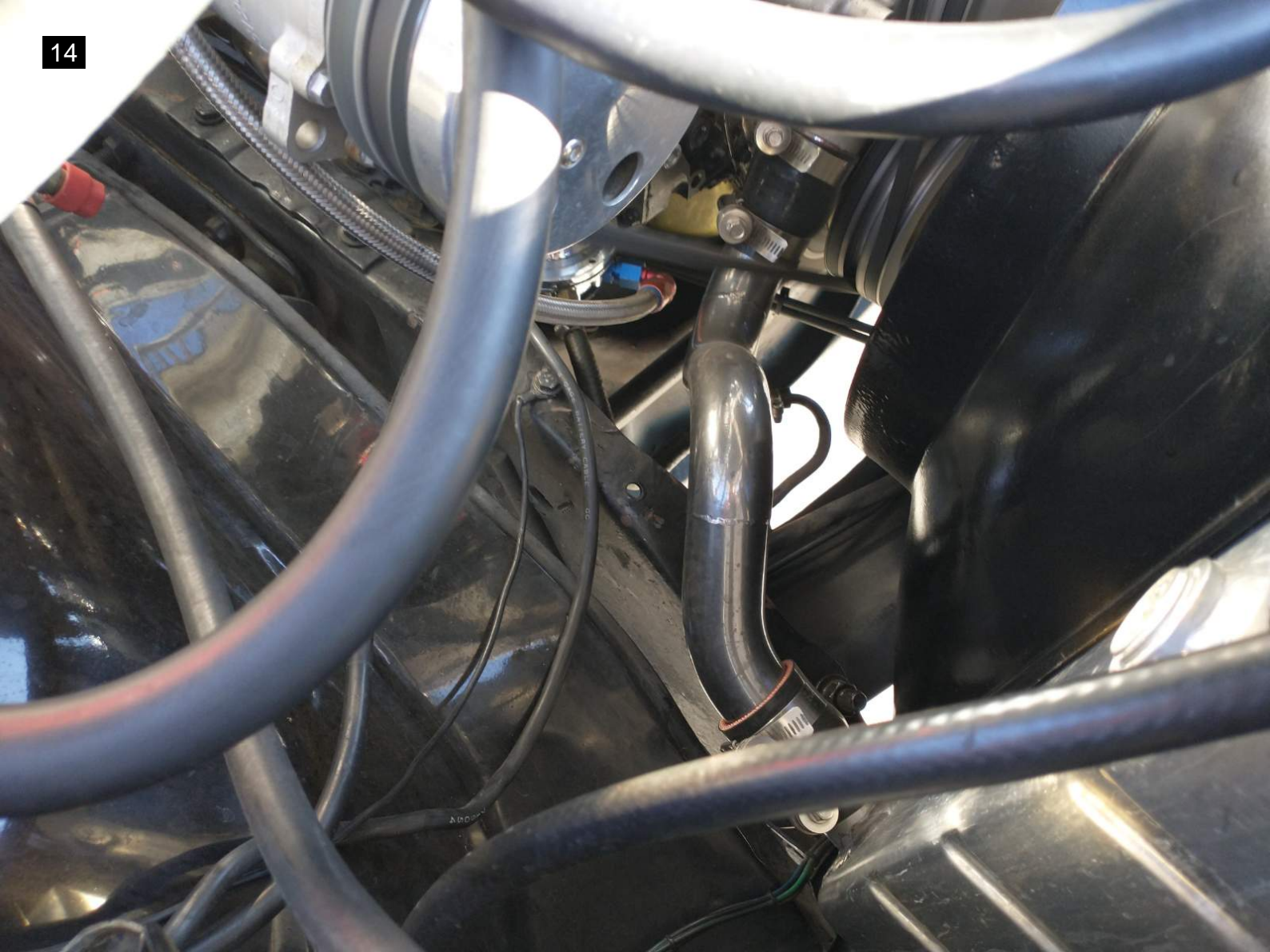




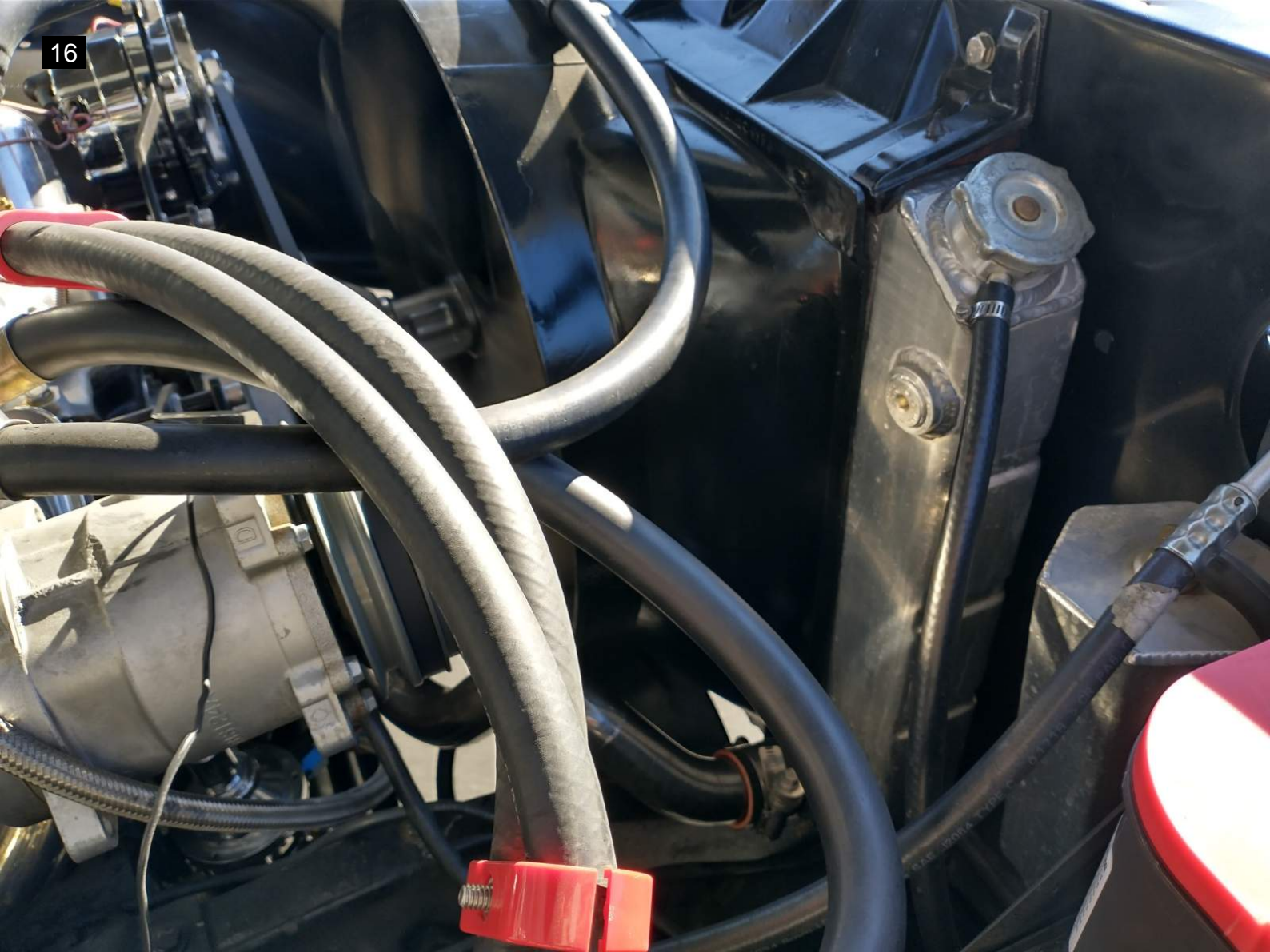






















22



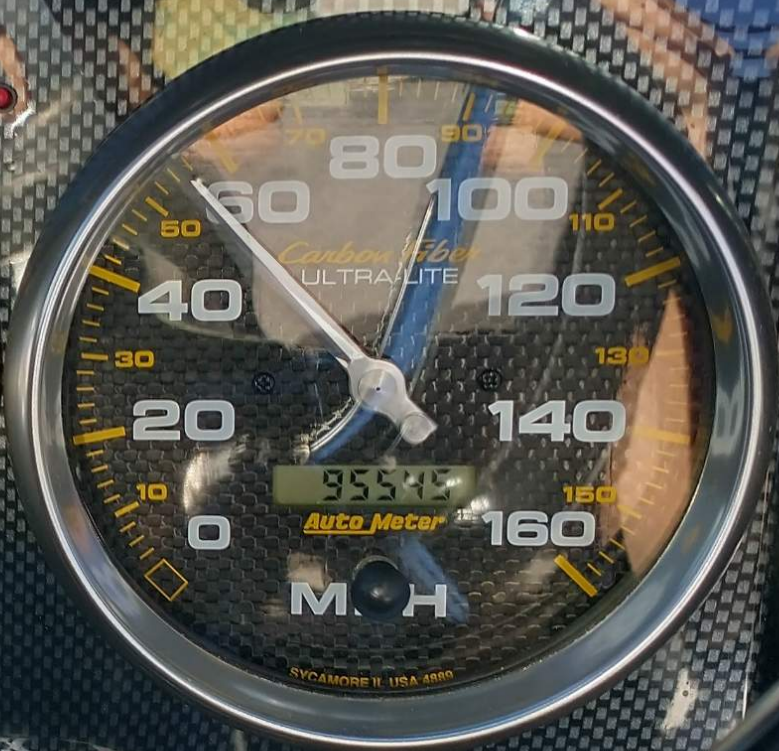
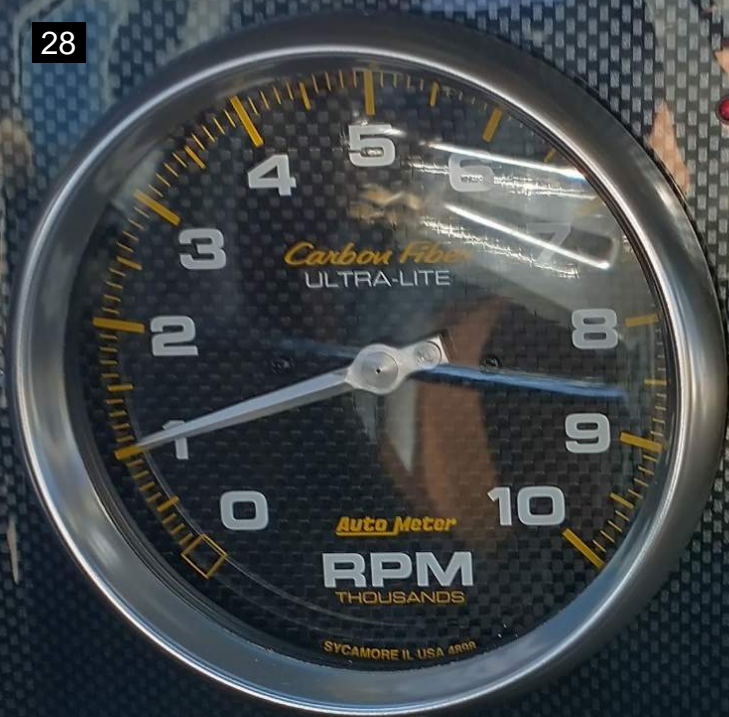




































CHEVROLET MOTOR DIVISION
GENERAL MOTORS CORPORATION

WARRANTY MAY BE VOIDED IF WEIGHT EXCEEDS ANY OF RATINGS SHOWN. GROSS VEHICLE WEIGHT INCLUDES WEIGHT OF BASE TRUCK, ALL ADDED EQUIPMENT, DRIVER AND PASSENGERS, AND ALL PROPERTY LOADED INTO TRUCK.

*REFER TO OWNERS MANUAL FOR EQUIPMENT REQUIRED FOR INTERMEDIATE OR MAXIMUM GVW RATINGS, AND FOR OTHER LOADING INFORMATION, INCLUDING TIRE INFLATION.

RATINGS IN POUNDS - AS MANUFACTURED *MAXIMUM CAPABILITY

GROSS VEHICLE WEIGHT FOR THIS VEHICLE

5400

6000

MAXIMUM FRONT END WEIGHT AT GROUND

3100

3250

MAXIMUM REAR END WEIGHT AT GROUND

3218

3582

VEHICLE IDENTIFICATION NO.

CCY143Z154372

VEHICLE IDENTIFICATION NO.

3218 3582
CCY143Z154372





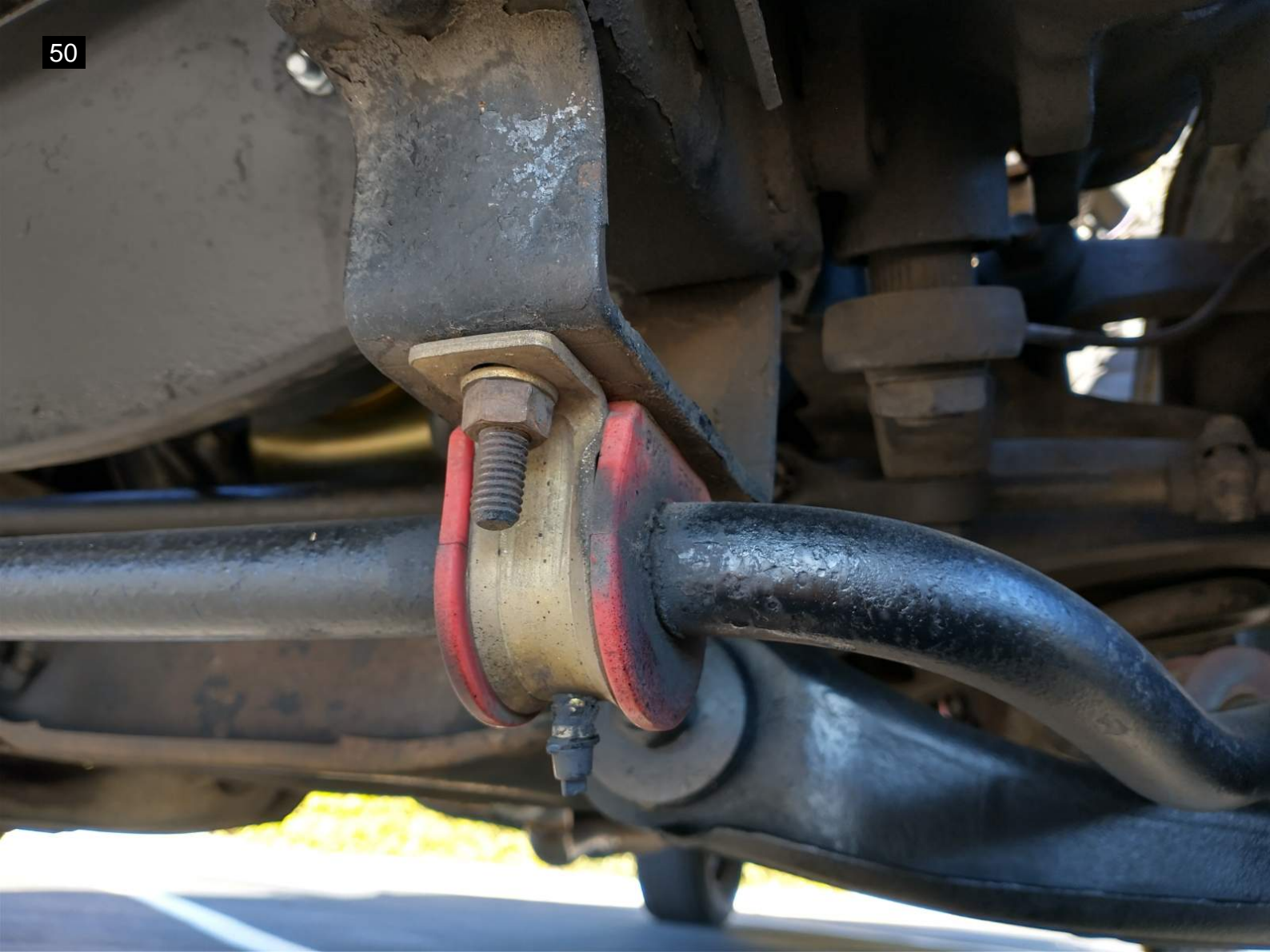


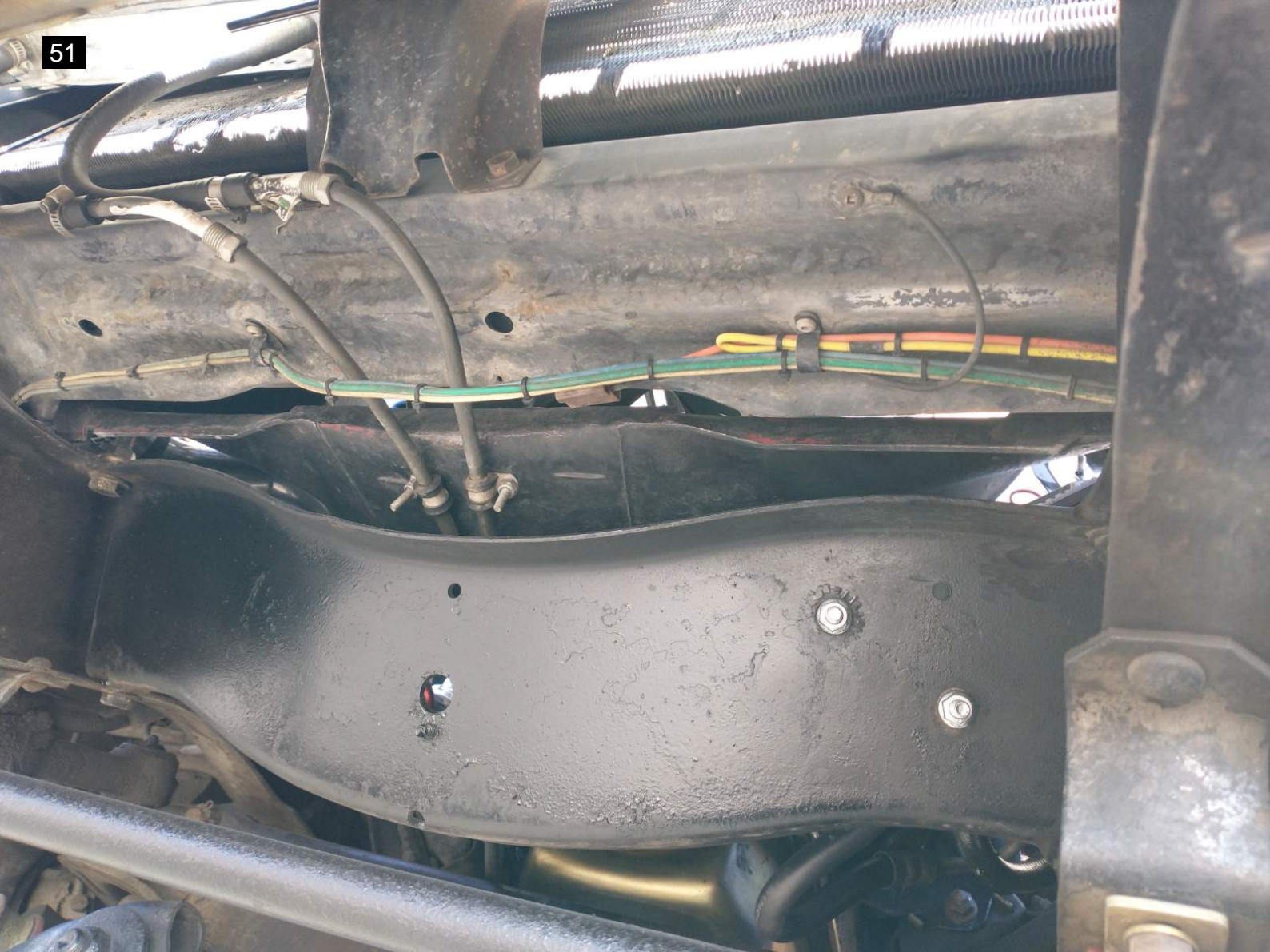










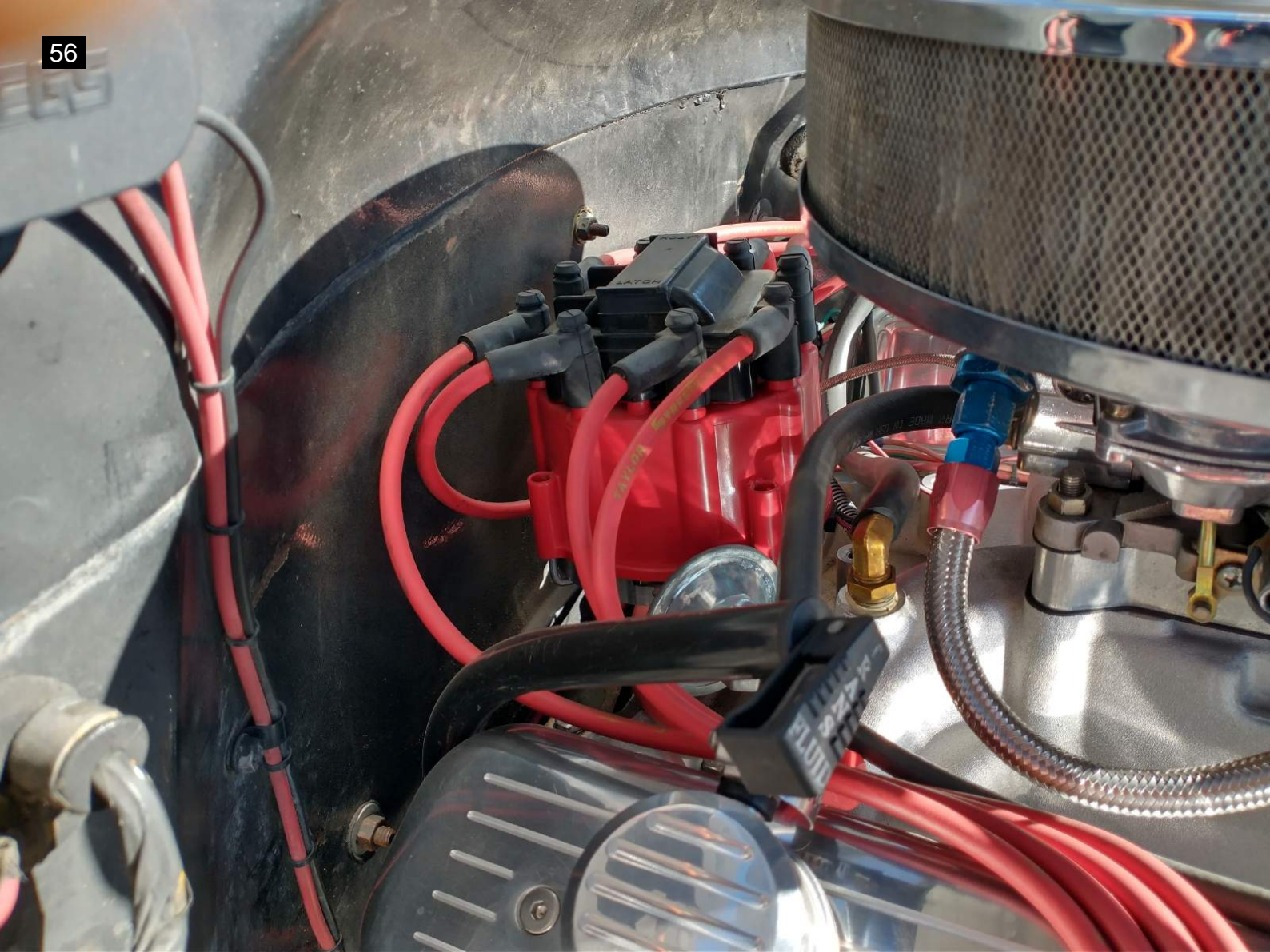




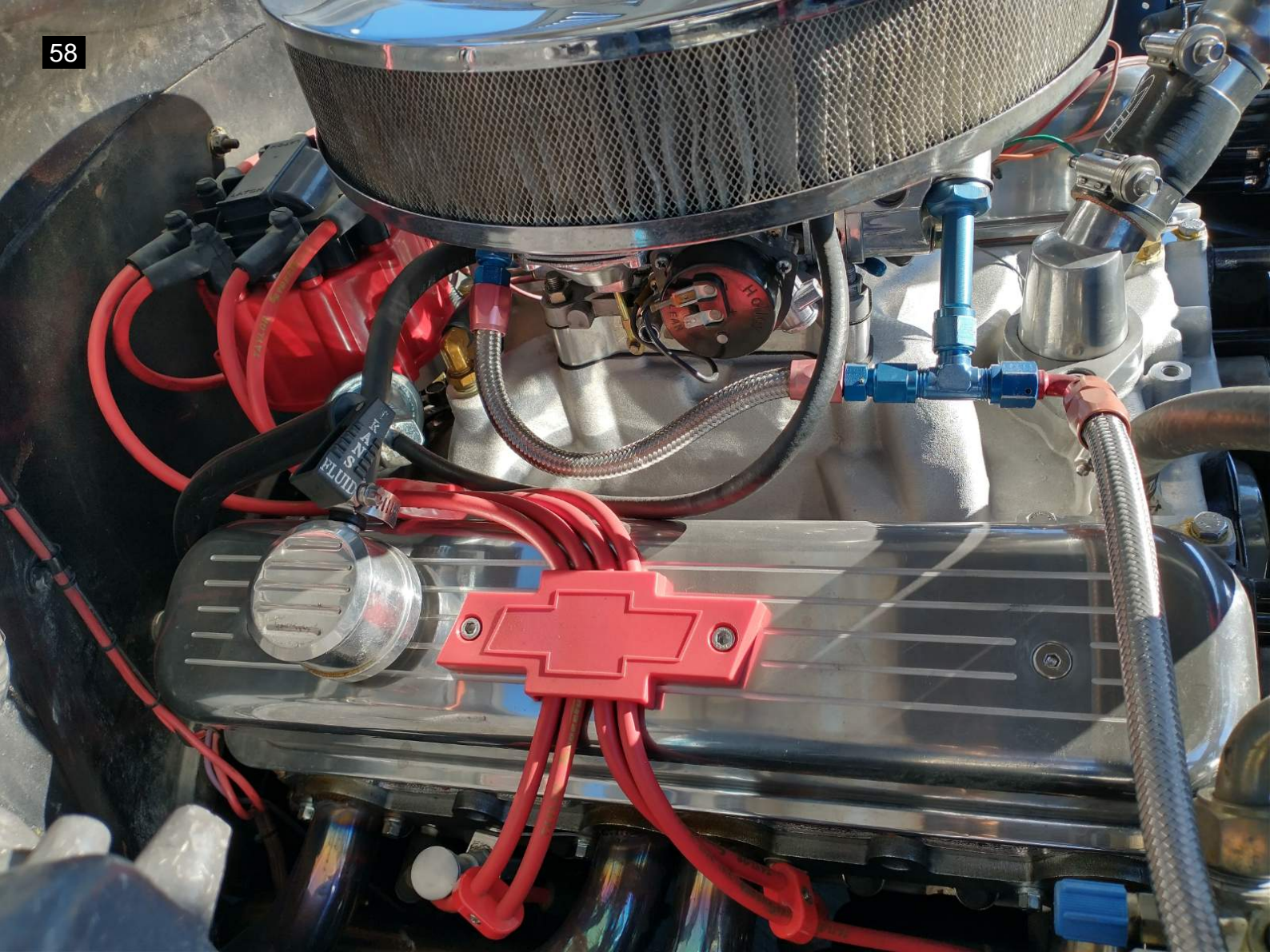


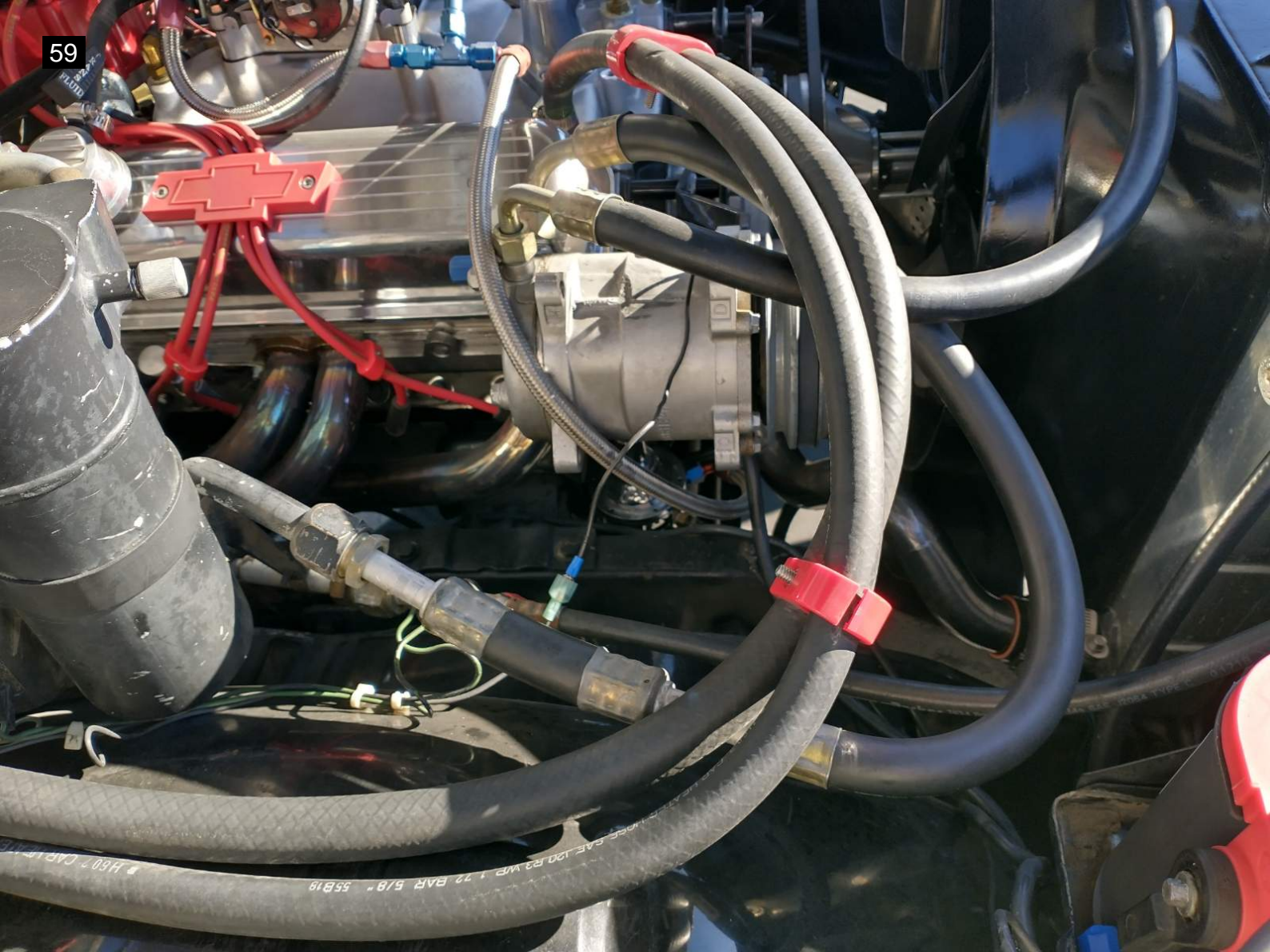






















CHEVROLET







































































