

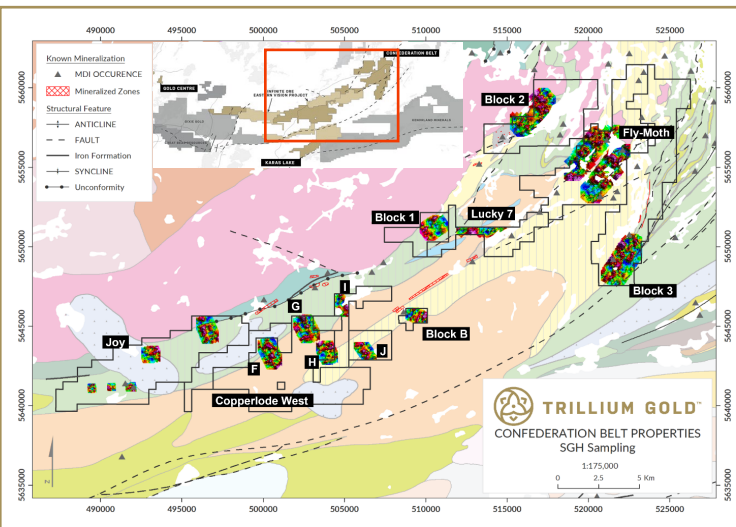
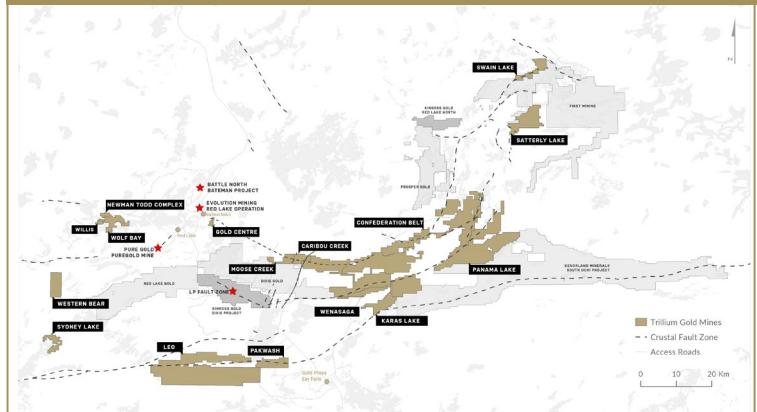


### VALUE ADDED STRATEGY

- Early acquisition of district-scale land position in a world-class mining region
- Competitive land package on trend with major producing mines and deposits
- Three high quality projects actively being advanced, each with its own investment merits
- High quality leadership and geo-technical team with major company and Red Lake experience
- Tightly held share ownership with management/insiders owning ~40%

**Trillium Gold is positioned to be a significant player in Red Lake Ontario's future advancement**

### Control of over 88,600 hectares of prospective properties in the prolific Red Lake Mining District



### TRIPLE THE LEVERAGE IN RED LAKE

- **Confederation Belt (100%):** 100+ km of land package previously explored for base metals and gold on proven trends
  - Largest contiguous land package bound by the Red Lake and LP Fault structures
- **Gold Centre (80%):** 350 metres from the Campbell-Red Lake Mine deep mineralized zones
  - Drilling ongoing to prove that Gold Centre is the southeast extension of the high-grade Red Lake Operations (RLO)
- **Newman Todd Complex (100%):** Being advanced to open-pit mining scenario
  - New interpretation of ultra high-grade Rivard quartz veins + E-W structural impact on NT resource

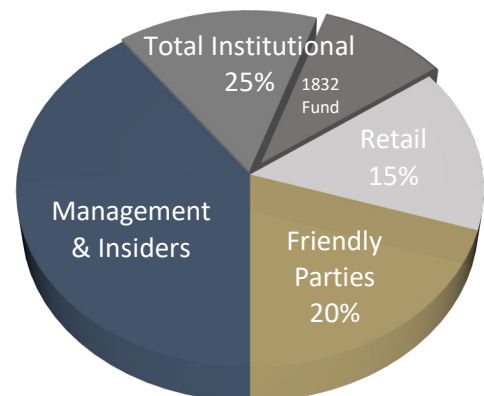
### Red Lake rapid growth profile attracting major attention

- Kinross acquisition of Great Bear Resources for \$1.8 bil – Q1 '22
  - Great Bear's Dixie deposit among the most important Canadian gold discoveries
- Barrick Gold earn-in/option agreements with Red Lake Gold, Dixie Gold, Kenorlands - Q3-Q4 '21
- Evolution Mining acquisition of Battle North – Q2 '21

### CAPITAL STRUCTURE (as of Mar 31, 2022)

Company Tickers	TSXV:TGM, OTCQX:TGLDF, FRA:0702
Share Price (May 2, 2022)	C\$0.31
52-Week Low/High	C\$0.27 – C\$1.40
Basic Shares Outstanding	55.8M
Options	5.1M
Warrants	17.9M
Fully Diluted Shares Outstanding	78.8M
Market Capitalization fully diluted	C\$24.4M
Cash	C\$4.1M

### SHARE OWNERSHIP



**Tightly held share ownership with management/insiders owning ~40%**



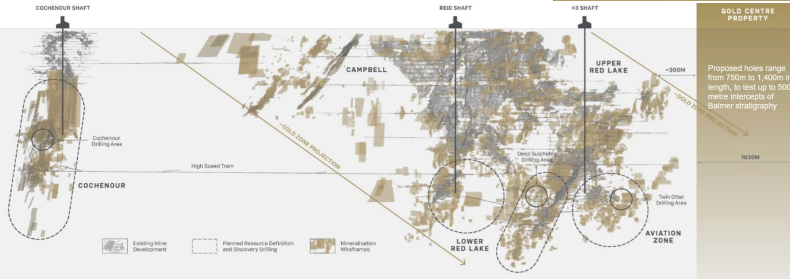
# TRILLIUM GOLD™

TSX.V: TGM  
OTCQX: TGLDF  
FRA: 0702

## GOLD CENTRE DRILLING PROGRAM

Located 350 metres from Evolution Mining's Red Lake Mine

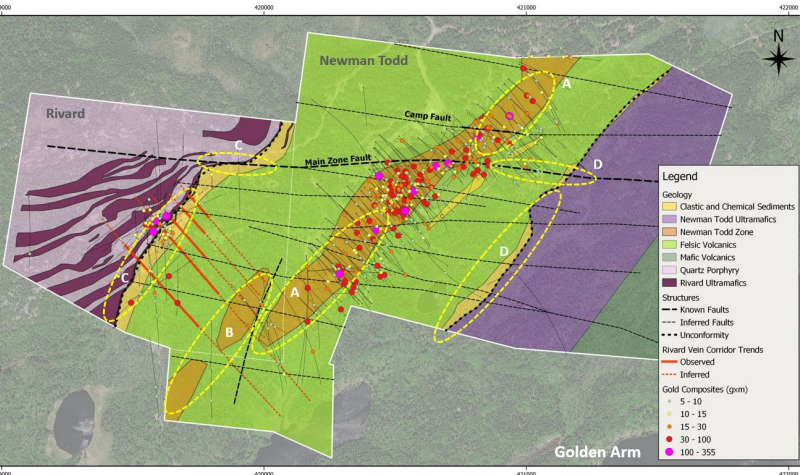
Phase 2 drill program nearing completion to show that RLO mineralization continues onto the Gold Centre Property



- Evolution Mining has commenced a 100,000 m drill program (with 5 rigs) at a budget of A\$20-\$25 million to explore extensions of the Cochenour and Red Lake deposits

**The Red Lake Camp is the highest-grade gold camp in North America and has produced over 29.5M oz of gold at an average grade of 15.41 g/t Au**

## Newman Todd Complex Geology and Gold Composites



**Trillium has made substantial advancements in the understanding of structure, geology and mineralization revealing a much larger and more integrated gold system than previously contemplated**

- Trillium's new interpretation sees strong correlation between high-grade mineralization and E-W structures with the highest grades associated with Rivard-style quartz veining within the brecciated NT Zone
- Drill hole NT21-194 returned 9 metres at 19.73 g/t Au - including 1.55m at 102.16 g/t Au - confirmed structural interpretation and potential to considerably increase the NT Zone open-pit resource including at depth
- Numerous other E-W structures controlling high-grade zones being targeted throughout the NT Zone

## HIGH QUALITY LEADERSHIP

**Russell Starr | President & CEO**

- Over 20 years of corporate finance, M&A, investment and business development experience. He has held senior positions and advisory roles with such financial institutions as RBC Capital Markets, Scotia Capital and Orion Securities

**Bill Paterson (P.Geo) | Vice President of Exploration**

- Professional Geologist in Ontario with extensive experience in surface and underground exploration in Red Lake, including managing the ultra-deep surface drilling program at the Cochenour Mine that progressed to underground development, bulk sampling and starter mine status

**Ian MacNeilly (CPA, CA) | Chief Financial Officer, Corporate Secretary**

- Chartered Accountant with over 20 years of executive financial management and leadership experience in the mining sector and senior executive for a number of global mining and development companies

**Donna Yoshimatsu | Vice President of Corporate Development & IR**

- 25 years experience in senior investor relations positions held for the original Franco-Nevada and SNC-Lavalin

## BOARD OF DIRECTORS

**Russell Starr | Interim Chairman**

**Kristian Toth | Director**

- Experienced mining, capital markets and M&A lawyer with experience in mining finance and M&A stretches across all jurisdictions and minerals

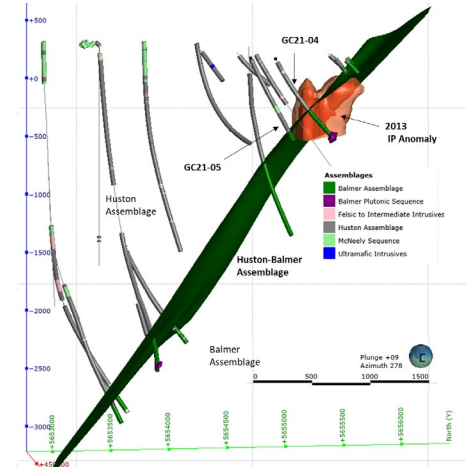
**Robert Kang (CPA, CA) | Director**

- Corporate finance professional experienced in all aspects of Exchange policy, corporate governance and public company obligations

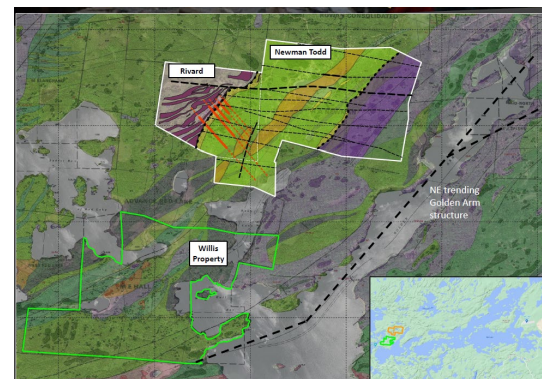
**David Velisek | Director**

- Over 25 years in capital markets as a licensed trader (equities, options and futures) and Investment Advisor

- Adjacent to and on strike with Evolution Mining's Campbell-Red Lake Mine
- Underground development at Red Lake Operations (RLO) < 350 metres from Gold Centre property boundary
- 9,300 metre, 8 hole drill program nearing completion at the north of the property



- 55,000 metres of historic drilling at Newman Todd in 2011-12 encountered enigmatic high grade intercepts and focused almost entirely inside the NT Zone
- First 3 drill holes targeting the Rivard high grade gold veining reveals **visible bonanza-grades of 129.79 g/t Au over 1.30m, including 0.30m @ 561 g/t Au at 13.00m; and 9.58 g/t Au over 0.80m, including 23.0 g/t Au over 0.30m from 41.30m**
- Visible gold in narrow high-grade veins and in broader zones of lower grade gold mineralization
- Potential for more high-grade mineralization at depth



**The 100%-owned Willis property covers the SW extension of the NT Zone that displays many similarities to major gold mines to the east**

**Trillium Gold Mines Inc.**

2250-1055 W. Hasting St., Vancouver BC, Canada V6E 2E9  
info@trilliumgold.com

Donna Yoshimatsu, VP Corporate Development & IR  
dyoshimatsu@trilliumgold.com

416-722-2456