

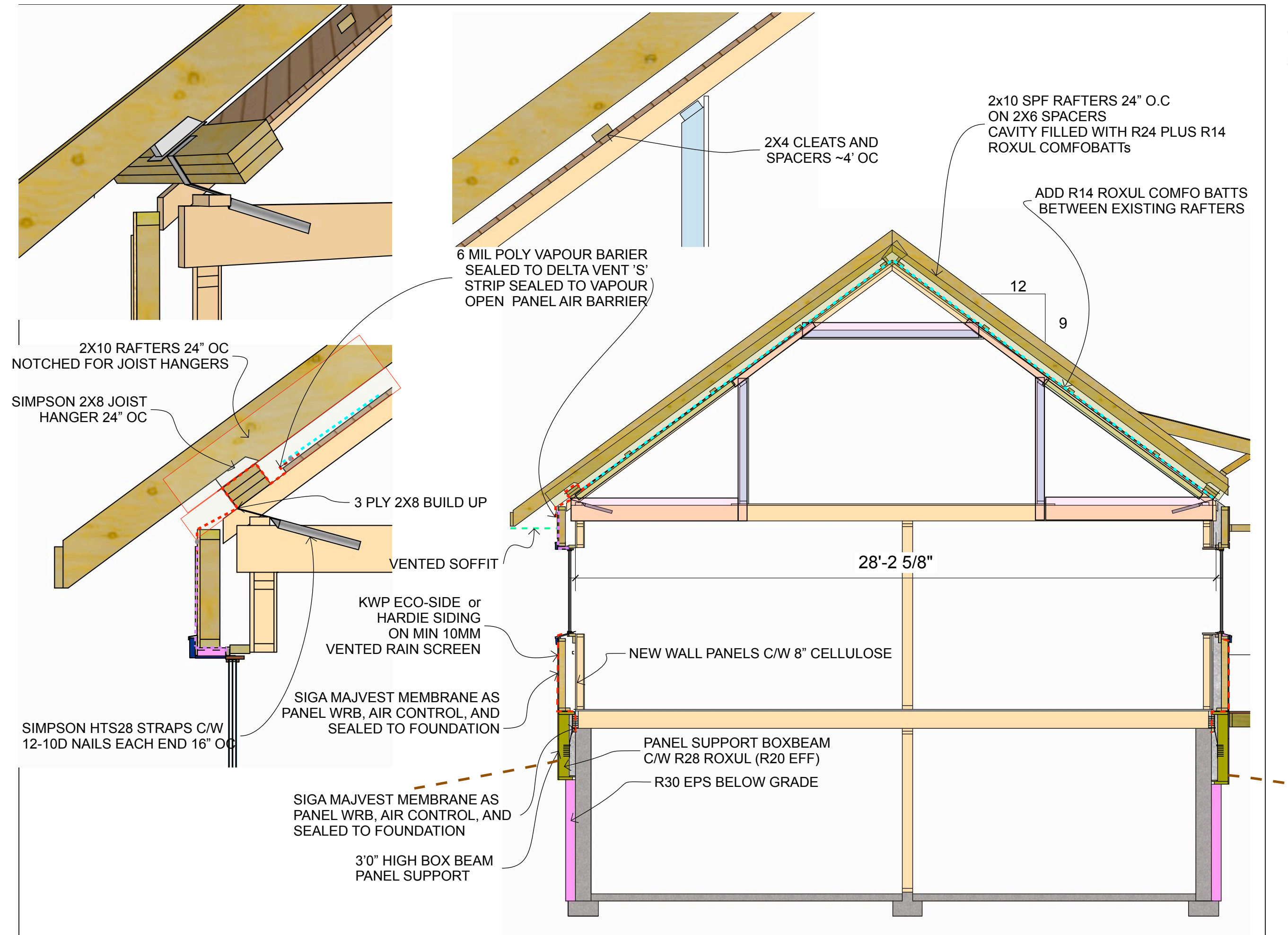
SANDERCOCK HARMSMA
DEEP ENERGY RETROFIT
CONSTRUCTION DETAILS

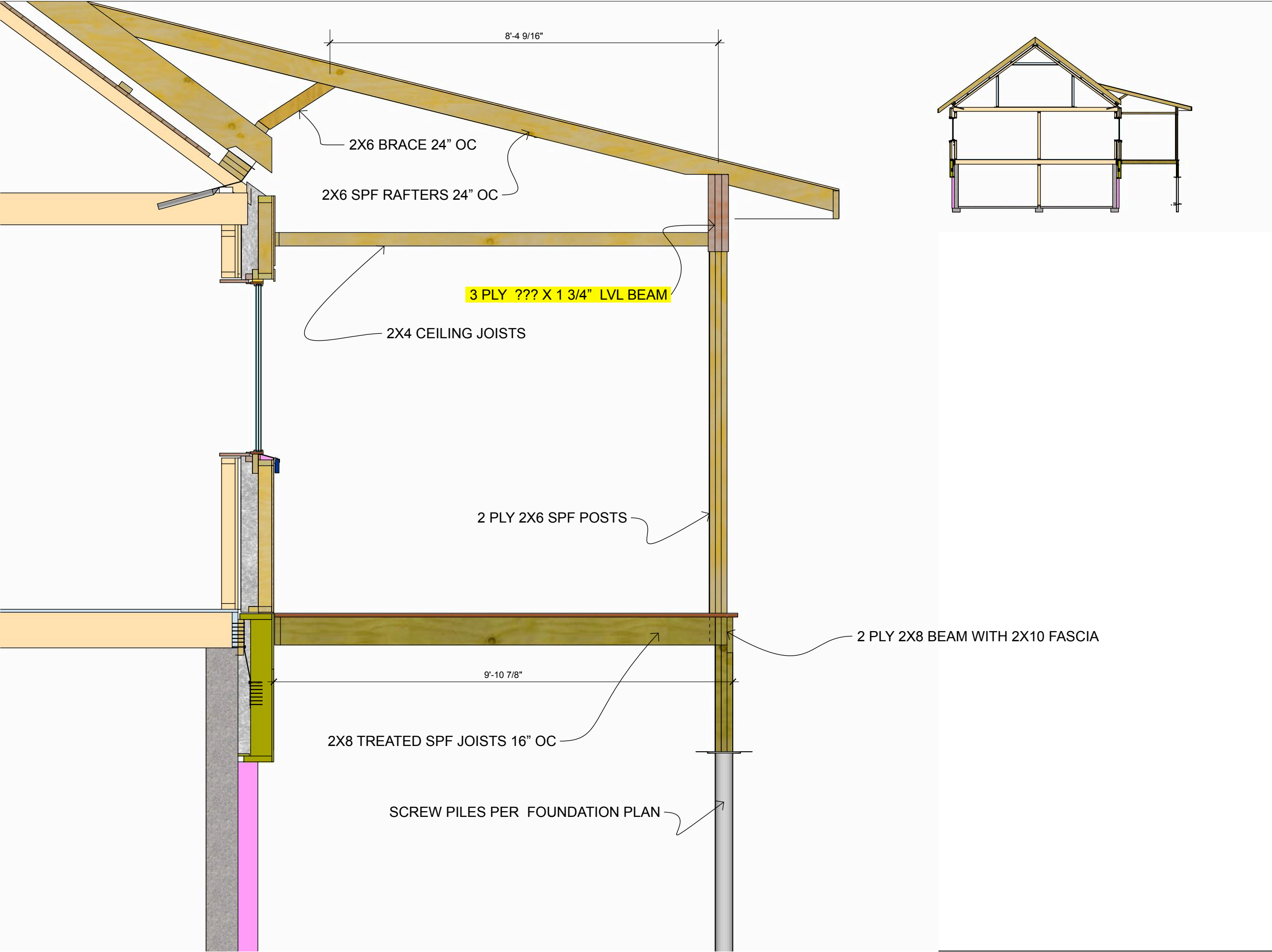
Andrew Smith, P.Eng.
3715 65 Street ED AB
780-604-4259

DATE
April 12, 2022
ISSUED FOR PERMIT

DRAWN BY
PA, TA

EW SECTION 1





Butterwick DESIGN.
PLAN.
BUILD.
BUTTERWICK CONSTRUCTION
& CARPENTRY LTD.
5628 82 Ave
Edmonton, AB T6B 3E6
Tel: 780.434.3559
www.butterwick.ca

SANDERCOCK/
HARMSMA
DEEP RETROFIT
11408 63 Street
Edmonton, AB
T5W 4G1

SANDERCOCK HARMSMA
DEEP ENERGY RETROFIT
CONSTRUCTION DETAILS

Andrew Smith, P.Eng.
3715 65 Street ED AB
780-604-4259

DATE
April 12, 2022
ISSUED FOR PERMIT

DRAWN BY
PA, TA

EW PORCH
SECTION

SANDERCOCK/
HARMSMA
DEEP RETROFIT
11408 63 Street
Edmonton, AB
T5W 4G1

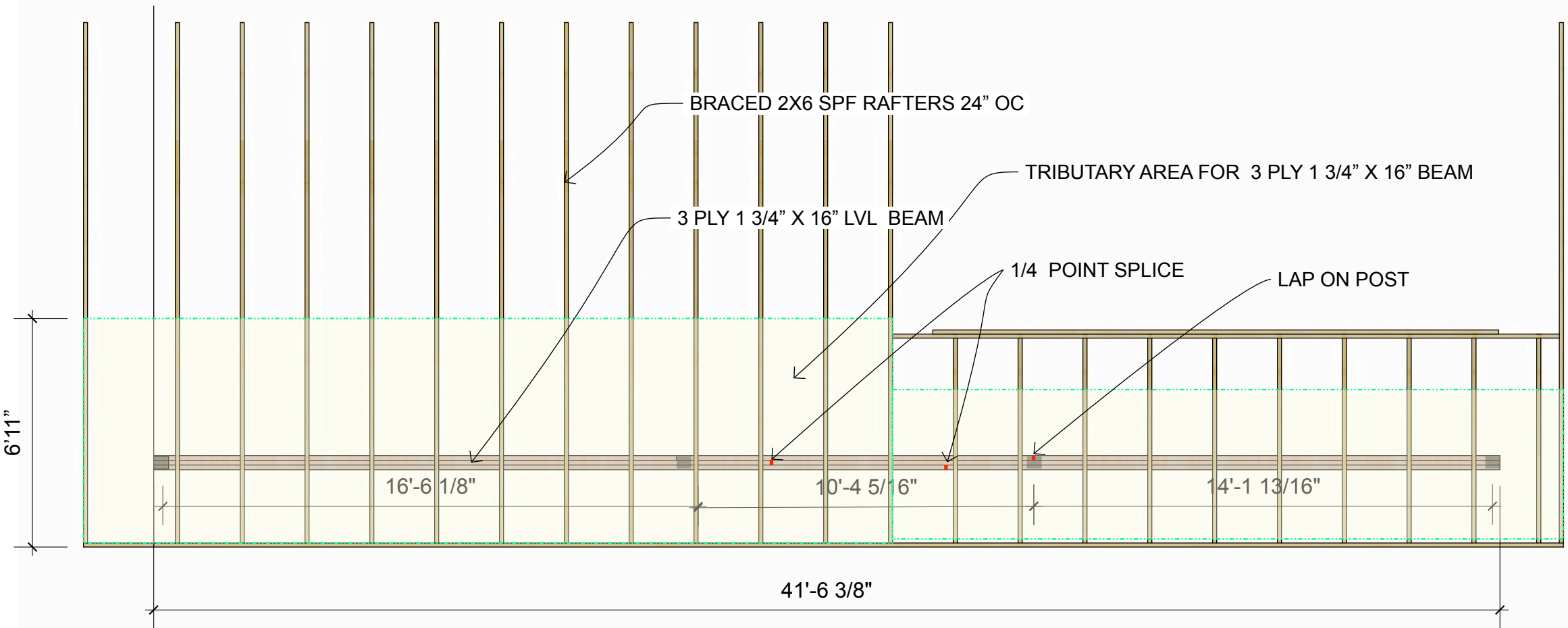
SANDERCOCK HARMSMA
DEEP ENERGY RETROFIT
CONSTRUCTION DETAILS

Andrew Smith, P.Eng.
3715 65 Street ED AB
780-604-4259

DATE
April 12, 2022
ISSUED FOR PERMIT

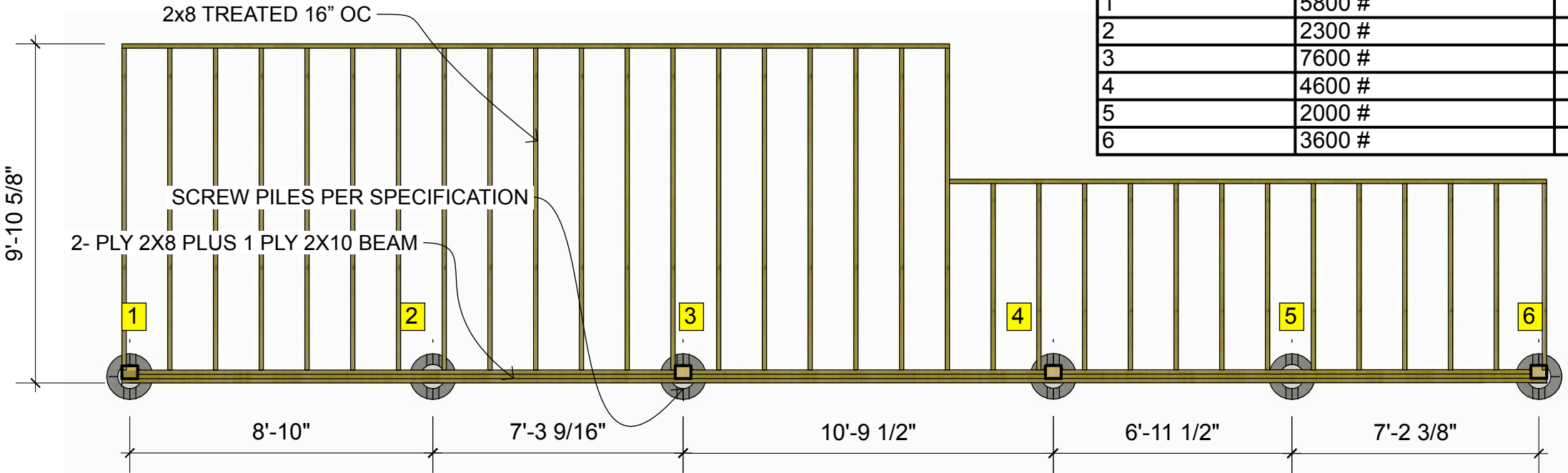
DRAWN BY
PA, TA

PORCH FRAMING
PLANS



PORCH ROOF FRAMING

SCREW PILE #	LOAD (UNFACTORED)	
1	5800 #	
2	2300 #	
3	7600 #	
4	4600 #	
5	2000 #	
6	3600 #	



PORCH DECK FRAMING

PILE SUPPLIER TO PROVIDE GALV PILES TO MEET THE NOTED LOADS (UNFACTORED OR FACTORED) COMPLETE WITH EXTENSIONS. CAP TO SPECIFIED ELEVATIONS. PROVIDE SITE MONITORING AND SIGN-OFF WHEN COMPLETE USING AN ENGINEERED PRODUCT. PROVIDE FIELD TORQUE MEASUREMENTS, OR CONFIRM CAPACITIES BASED ON PROVIDED LENGTHS AND ASSUMED WORST CASE GROUND CONDITIONS.

SANDERCOCK HARMSMA
DEEP ENERGY RETROFIT
CONSTRUCTION DETAILS

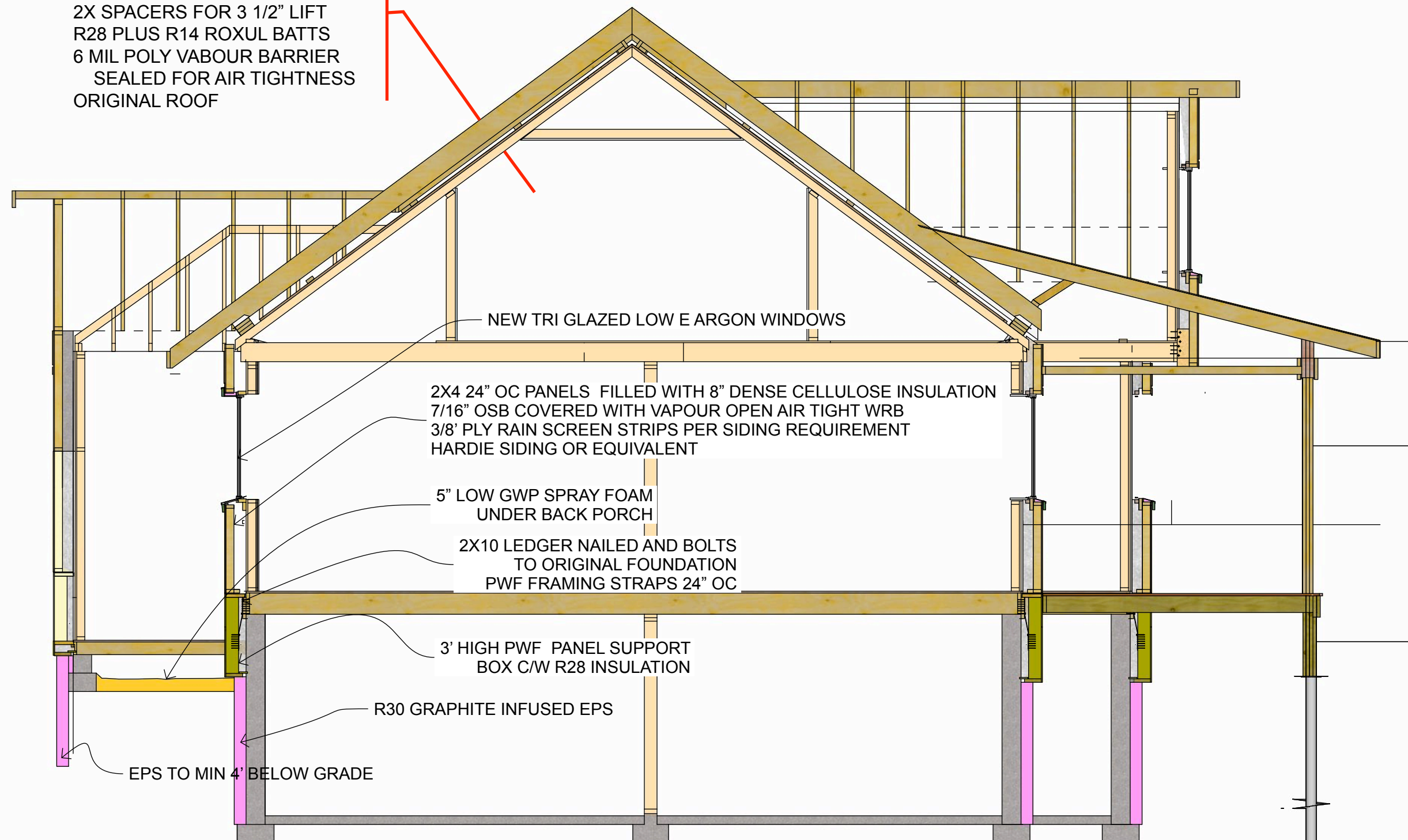
Andrew Smith, P.Eng.
3715 65 Street ED AB
780-604-4259

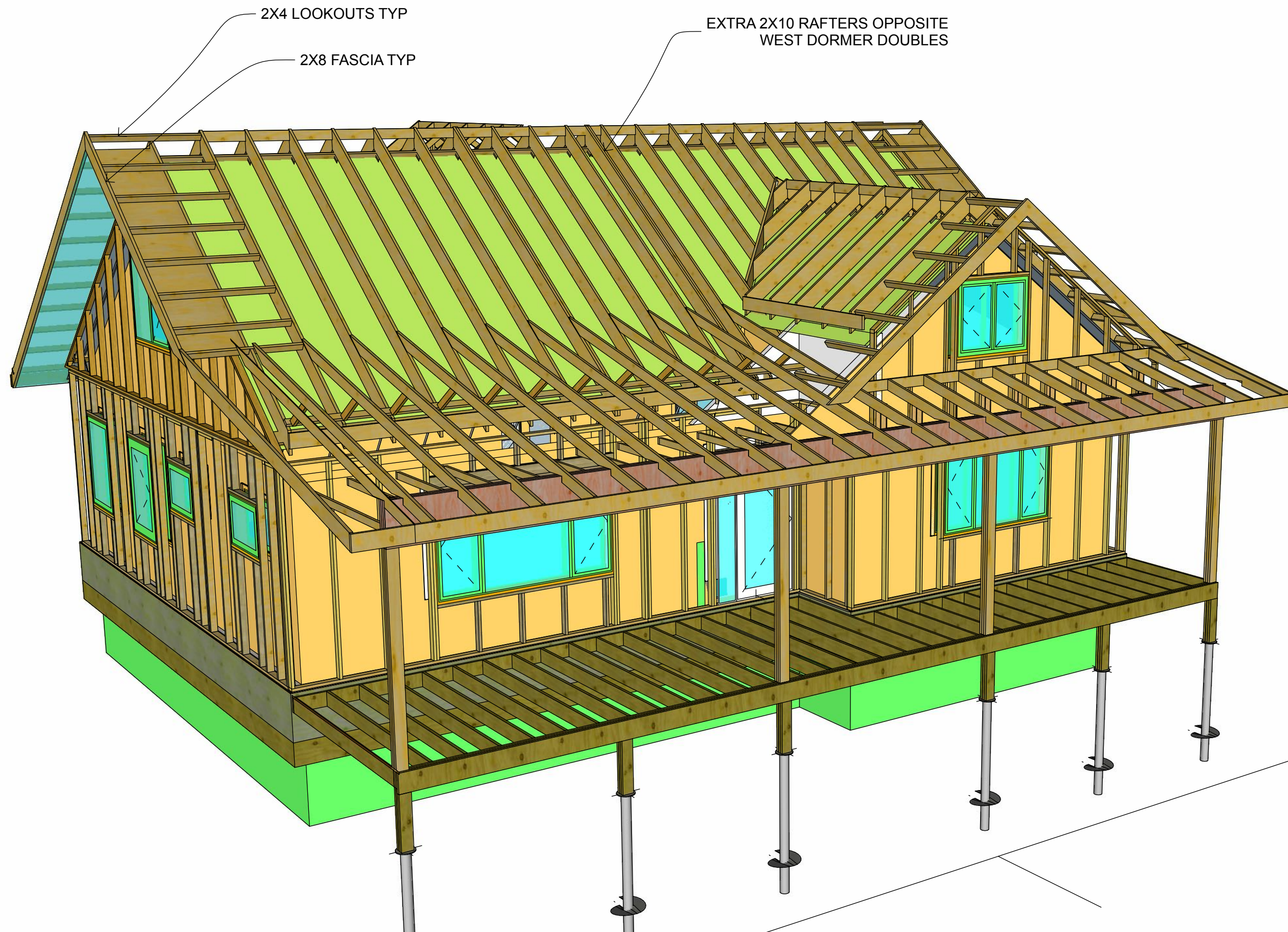
DATE
April 12, 2022
ISSUED FOR PERMIT

DRAWN BY
PA, TA

EW SECTION 2

ASPHALT SHINGLES
7/16" OSB SHEATHING
1 1/2" VENT SPACE
2X10 SPF RAFTER 24" OC
2X SPACERS FOR 3 1/2" LIFT
R28 PLUS R14 ROXUL BATTS
6 MIL POLY VABOUR BARRIER
SEALED FOR AIR TIGHTNESS
ORIGINAL ROOF





Butterwick DESIGN.
PLAN.
BUILD.

BUTTERWICK CONSTRUCTION
& CARPENTRY LTD.
5628 82 Ave
Edmonton, AB T6B 3E6
Tel: 780.434.3559
www.butterwick.ca

SANDERCOCK/
HARMSMA
DEEP RETROFIT
11408 63 Street
Edmonton, AB
T5W 4G1

SANDERCOCK HARMSMA
DEEP ENERGY RETROFIT
CONSTRUCTION DETAILS

Andrew Smith, P.Eng.
3715 65 Street ED AB
780-604-4259

DATE
April 12, 2022
ISSUED FOR PERMIT

DRAWN BY
PA, TA

ROOF FRAME
OVERVIEW 1

- REMOVE ORIGINAL SHEATHING
- SUPPORT NEW 2X10 RAFTERS ABOVE ORIGINAL BEARING WALL

2X4 RAFTERS 24" OC

2 PLY 2X0 RAFTERS UNDER DORMER RAKE WALL PANELS

CONTINUOUS 2X6 RIDGE BLOCKING

BRACE 2X4 RAFTER TO ORIGINAL EXTERIOR WALLS

PORCH GABLE TO BE SUPPORTED ON LOWER PANEL

- 2 PLY 2X10 BEAM TO SUPPORT FRONT DORMER PANEL.
- CREATE CLEARANCE 'CUTOUT' BELOW WINDOW

Butterwick DESIGN.
PLAN.
BUILD.

BUTTERWICK CONSTRUCTION
& CARPENTRY LTD.
5628 82 Ave
Edmonton, AB T6B 3E6
Tel: 780.434.3559
www.butterwick.ca

SANDERCOCK/
HARMSMA
DEEP RETROFIT
11408 63 Street
Edmonton, AB
T5W 4G1

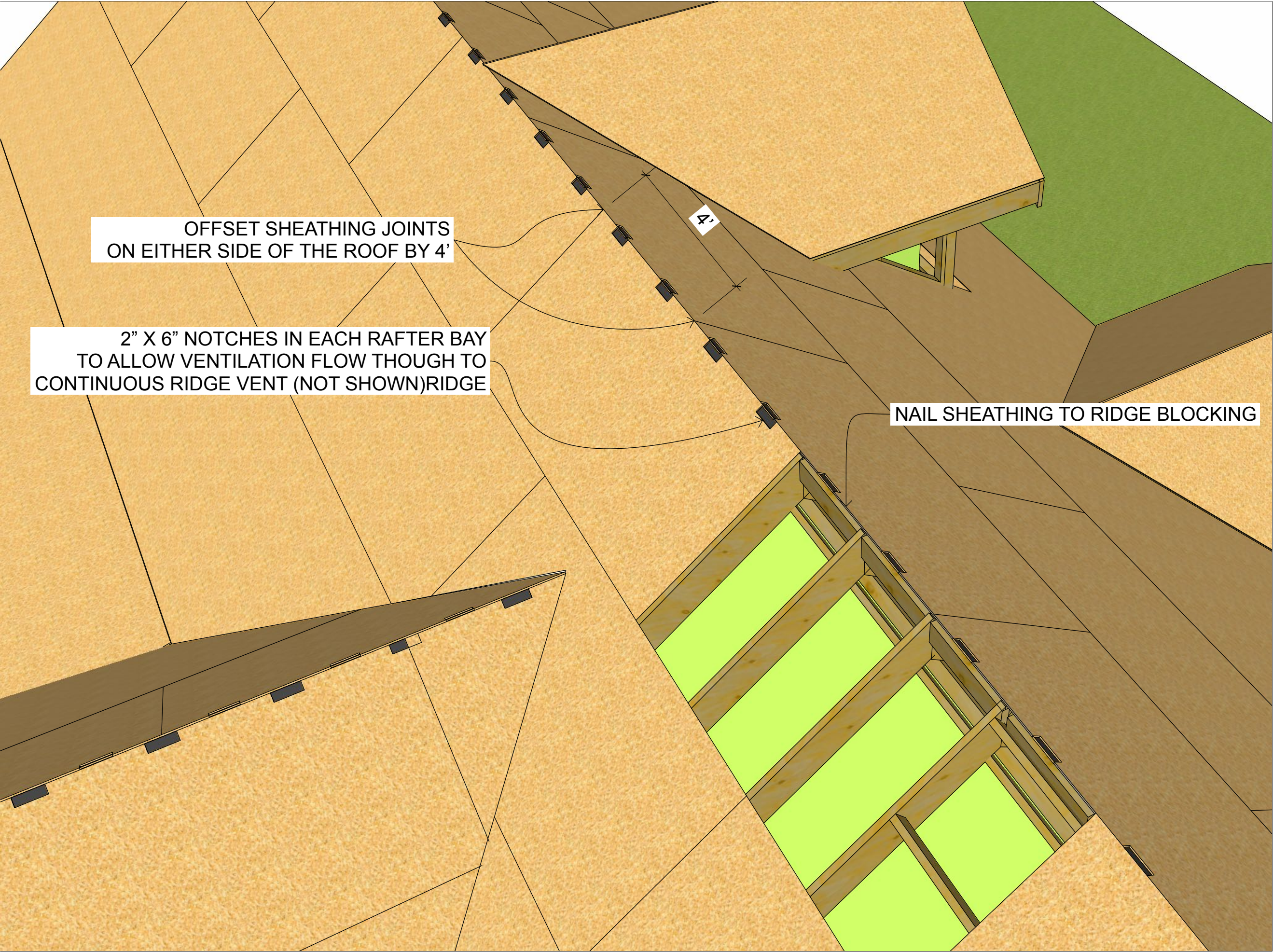
SANDERCOCK HARMSMA
DEEP ENERGY RETROFIT
CONSTRUCTION DETAILS

Andrew Smith, P.Eng.
3715 65 Street ED AB
780-604-4259

DATE
April 12, 2022
ISSUED FOR PERMIT

DRAWN BY
PA, TA

ROOF FRAME
OVERVIEW 2



Butterwick DESIGN.
PLAN.
BUILD.

BUTTERWICK CONSTRUCTION
& CARPENTRY LTD.
5628 82 Ave
Edmonton, AB T6B 3E6
Tel: 780.434.3559
www.butterwick.ca

SANDERCOCK/
HARMSMA
DEEP RETROFIT
11408 63 Street
Edmonton, AB
T5W 4G1

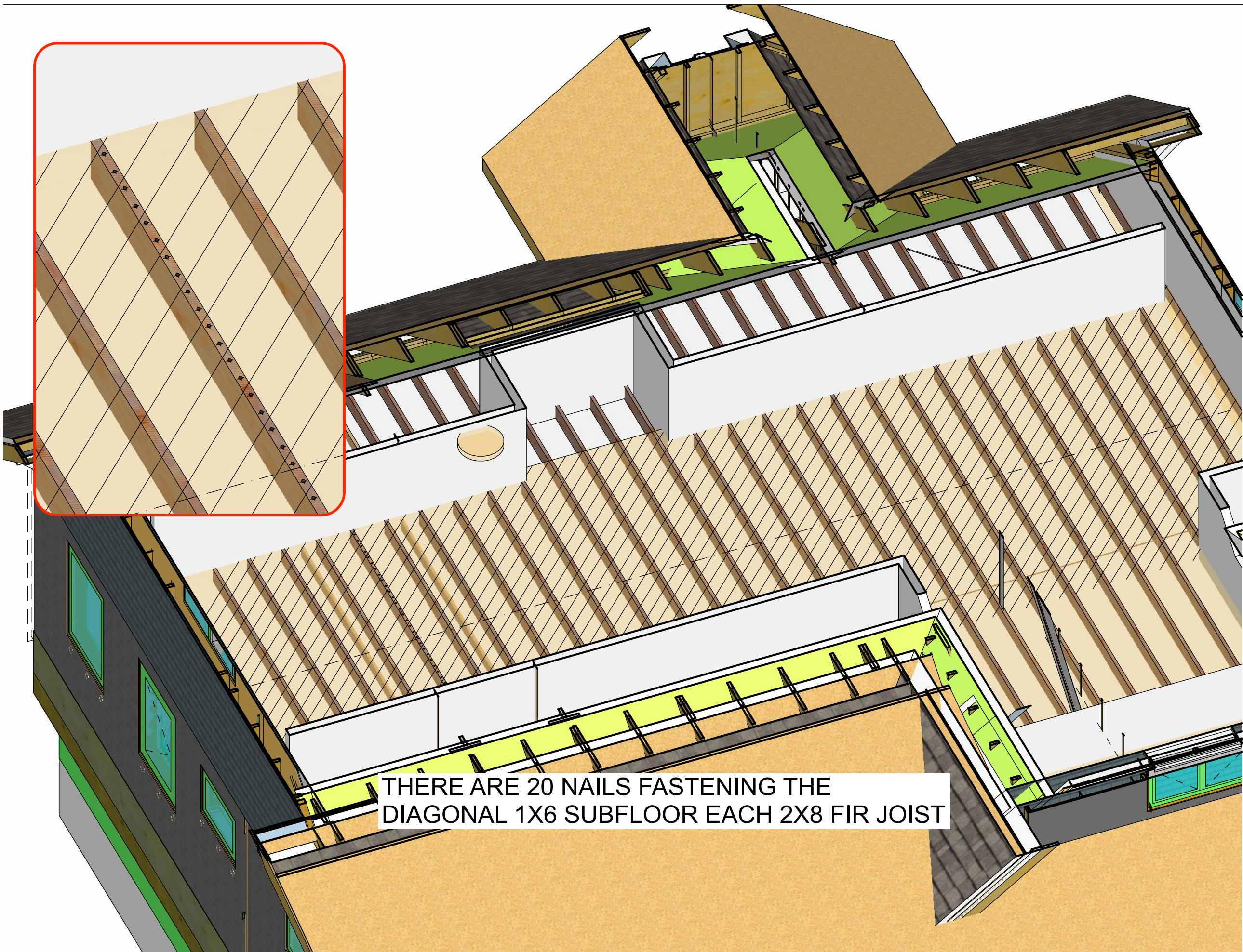
SANDERCOCK HARMSMA
DEEP ENERGY RETROFIT
CONSTRUCTION DETAILS

Andrew Smith, P.Eng.
3715 65 Street ED AB
780-604-4259

DATE
April 12, 2022
ISSUED FOR PERMIT

DRAWN BY
PA, TA

ROOF FRAME
DETAILS



SANDERCOCK HARMSMA
DEEP ENERGY RETROFIT
CONSTRUCTION DETAILS

Andrew Smith, P.Eng.
3715 65 Street ED AB
780-604-4259

DATE
April 12, 2022
ISSUED FOR PERMIT

DRAWN BY
PA, TA

SUBFLOOR CROSS
TIE