

2021

SYNER GROUP

# SYNER | 30 LET

SYNER Group is a strong construction, development and investment company. Over the 30 years of its existence, it has undergone reorganization and has made a number of acquisitions and divestments. Although it also operates abroad through affiliated companies, it remains primarily a Czech company.

Turnover **€ 230 MIO.**

**700** employees

**20** companies

Ranked among the  
Czech **TOP 100**  
companies



CONSTRUCTION



DEVELOPMENT



ASSET  
MANAGEMENT



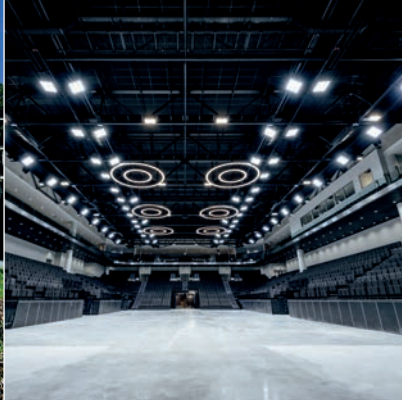
INVESTMENT



SPORT







## CONSTRUCTION

The construction business is the cornerstone of the whole group. We have been involved in the construction industry for over 30 years. We have completed over 700 successful and usually unique projects, with orders worth billions being no exception.

## DEVELOPMENT

We actively seek land and other suitable projects in the field of residential and administrative construction.

Our portfolio of completed projects includes residential housing, office and shopping centres, golf courses and hotels.

## INVESTMENT

We search for investment opportunities, from start-ups to the acquisition of established companies.

We invest in interesting projects outside construction and real estate.

## SPORT

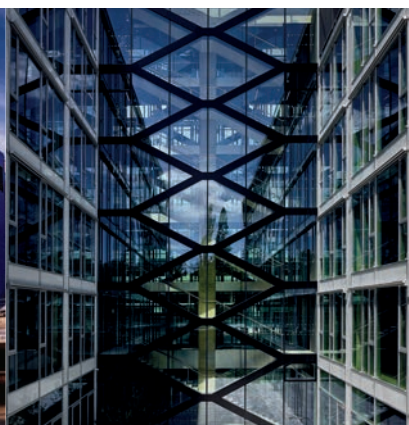
We focus on sport at the sponsorship and business level.

But we don't forget about the development of our youth teams as well.

## ASSET MANAGEMENT

We provide complete property management and look after retail, residential, sports and office complexes.

We professionally manage the assets of our companies to financially stabilise them and continually reinvest into our portfolio.



**SYNER**

**NA PLACHTĚ**  
rezidence

**REZIDENCE  
PARK MASARYKOVA**

**SPORT PARK  
LIBEREC**

**S TOWER**

**SPORT PARK  
MEDICAL**

**HC  
VITKOVIC**

**SENSE  
ARENA**

**ELITE  
Office Park**

**NADACE  
SYNER**

**HOTEL  
ARENA**

**GREENGATE**

**SPORT PARK  
LIBEREC**

**GENUS**

**STŘEDOČESKÉ  
OBALOVNÝ s.r.o.**

**SHINNERS**

**GREENFELD  
group**

**ELITE  
Office Park**  
**MILLENIUM**

## LEADERSHIP

**OWNER** PETR SYROVÁTKO

**OWNER** ING. JIŘÍ URBAN

**CFO** ING. TOMÁŠ STRÁNSKÝ

**LAWYER** MGR. VÁCLAV ČECHTICKÝ

**MEMBER OF THE BOARD OF DIRECTORS** ING. DALIBOR KOBRLE

**MEMBER OF THE BOARD OF DIRECTORS** ING. LUKÁŠ URBAN

**MARKETING, MEMBER OF THE SB** MGR. PETR SYROVÁTKO JR.