

CONTEMPORARY RESORT LIVING... REIMAGINED



296 LUXURY VACATION RESIDENCES | 54 HOLES OF CHAMPIONSHIP GOLF | 5 ACRE WATERPARK



Imagine living just minutes from the magic of Disney World
and everything Orlando has to offer

MODERN *RESORT* LIVING



ARTIST CONCEPTUAL RENDERING. DEVELOPER MAY CHANGE WITHOUT NOTICE.



ARTIST CONCEPTUAL RENDERING. DEVELOPER MAY CHANGE WITHOUT NOTICE.



ARTIST CONCEPTUAL RENDERING. DEVELOPER MAY CHANGE WITHOUT NOTICE.



LUXURY RESIDENCE FEATURES

- + 10-foot first floor and second floor double height ceilings in living room
- + 24x24 white matte floor tile in main living areas, master bath and secondary bath floors
- + Designer carpet in all bedrooms
- + 42" Maple kitchen cabinetry with quartz countertops and waterfall top at island
- + Samsung stainless steel appliances featuring a large capacity side-by-side refrigerator and a gas range
- + Master bath shower with "Rain Shower" head and built-in niche
- + Custom luxury furniture packages available

SPECTRUM+ CLUB AMENITIES

- + Clubhouse with concierge services
- + Shuttle service to Disney World Theme Parks
- + State-of-the-art fitness center
- + Grab and go market
- + Resort style pool and hot tub with cabanas
- + Children playground
- + Park flex space with sand volleyball court and BBQ area
- + Golf-cart transportation service
- + Fiber optic 1 gigabit infrastructures service platform with Prism IPTV, Internet and Voice

REUNION RESORT AMENITIES

ACCESS TO:

- + 5 Pools and exclusive Water Park
- + 3 Signature Golf courses:
 - + Palmer Legacy Course
 - + Watson Independence Course
 - + Nicklaus Tradition Course
- + 4 Resort Restaurants
- + Fitness Center
- + Tennis Center with Pro-Shop
- + Bicycle rentals
- + Children's camp and activities
- + Mini-Golfing
- + Shuttle services within Reunion
- + Resort Spa

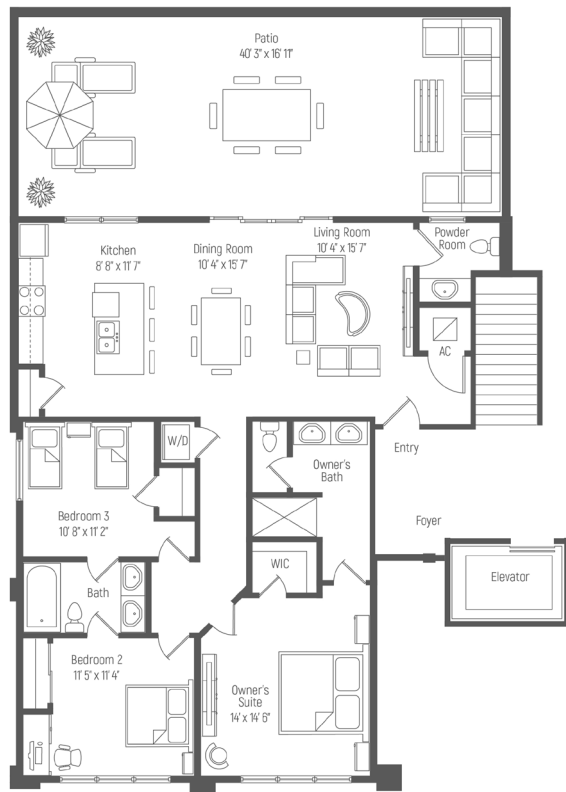
PRICING

- 3 Bedrooms starting from the \$370,000s
- 4 Bedrooms starting from the \$500,000s
- 5 Bedrooms starting from the \$520,000s

DEPOSIT SCHEDULE

- 10% at contract signing
- 20% within 45 days
- Balance at closing

RESIDENCES



MODEL A // 1-Story

3 Bedrooms + Patio // 2.5 Baths

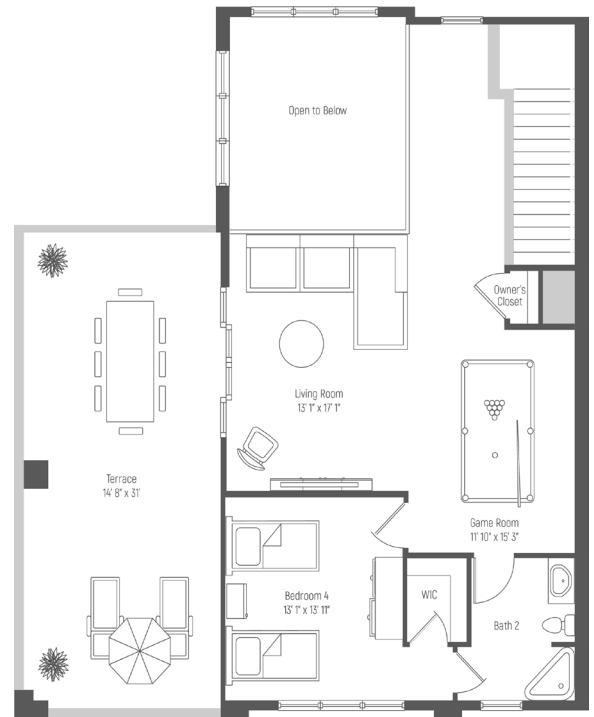
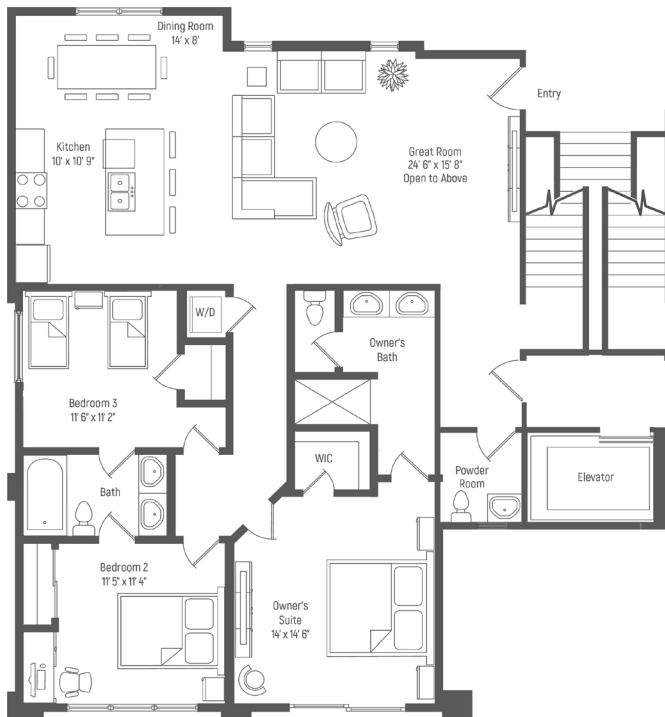
Interior	1,491 SF // 139 M ²
Exterior	647 SF // 60 M ²
Total	2,138 SF // 199 M ²



MODEL B1 // 2-Story

4 Bedrooms* + Terrace // 3.5 Baths

Interior	2,674 SF // 248 M ²
Exterior	474 SF // 44 M ²
Total	3,148 SF // 292 M ²



*5BD option available



OWNERSHIP THAT WORKS FOR YOU



These drawings are conceptual only and are for the convenience of reference. They should not be relied upon as representations, express or implied, of the final detail of the residences. Units shown are examples of unit types and may not depict actual units. Stated square footages are ranges for a particular unit type and are measured to the exterior boundaries of the exterior walls and the centerline of interior demising walls and in fact vary from the area that would be determined by using the description and definition of the "Unit" set forth in the Declaration (which generally only includes the interior airspace between the perimeter walls and excludes interior structural components). Note that measurements of rooms set forth on this floor plan are generally taken at the greatest points of each given room (as if the room were a perfect rectangle), without regard for any cutouts. Accordingly, the area of the actual room will typically be smaller than the product obtained by multiplying the stated length times width. All dimensions are approximate and may vary with actual construction, and all floor plans and development plans are subject to change.

