



Bright Horizons[®]
Early Learning Center at 1505
VIRTUAL TOUR



OUR LOCATION

1505 Louisiana
Houston, TX 77002



MEET OUR ADMIN TEAM

Robin Detenbeck,
Center Director



Background

I began with Bright Horizons in May 2003. I started my journey as a preschool teacher. I was an Assistant Director for 7yrs then promoted to director, and have been at this center for 4 years.

Favorite Children's Book

The Giving Tree by Shel Silverstein

I love the childcare industry because:

I enjoy growing our teachers to help teach little minds and building parent partnerships. Hearing children laughing is my favorite sound!

Juanita Cleveland,
Health and Safety Director



Background

I began my journey with Bright Horizons in 2003. I started my journey as an Assistant Teacher and through Bright Horizons succession planning program worked to my way to become an Education Coordinator.

Favorite Children's Book

Yesterday, I had the Blues by Jeron Ashford Frame

I love the childcare industry because:

I love the impact that I make not only on children but on Early Childhood Educators. The innocence and honesty of young children always leaves a smile on my face.



HEALTH & SAFETY AT BRIGHT HORIZONS

Bright Horizons is trusted by parents around the world — including many doctors and nurses on the frontlines of COVID-19 — to care for their children. Learn about our enhanced health and safety practices, in response to the pandemic.



Watch Video

ENHANCED PROTOCOLS AT BRIGHT HORIZONS CENTERS

The health, safety, and well-being of children, families, and staff is our top priority. We've always adhered to rigorous health, hygiene, and disinfecting practices, and now follow enhanced safety protocols, which continue to evolve as new learning around COVID-19 develops.

ENHANCED HEALTH & SAFETY

Our enhanced COVID-19 protocols ensure that our health and safety practices are informed by guidance from the CDC and state and local municipalities, and have the well-being of children, families, and staff at their core. These include:

- Reduced class sizes
- Consistent groupings in separate classrooms
- Daily health screen and temperature checks
- Social distancing as much as possible
- Face masks/coverings for all center staff
- Frequent cleaning and disinfecting

[Click here to learn more.](#)



Our staff is made up of experienced educators who are trained in health, safety, and security procedures, and comply with enhanced health and safety guidelines.



OUR COVID-19 POLICY

Please review and be familiar with our current COVID-19 policy. This policy prohibits certain individuals and their households from entering the center following confirmed or suspected exposures and after travel to restricted areas.

A DAILY HEALTH CHECK WILL BE CONDUCTED ON EVERY PERSON (ALL STAFF, FAMILIES AND CHILDREN) ENTERING THE CENTER:

1. TEMPERATURE CHECK:

A designated staff member will take the temperature of each person and any person/household with a fever at or above the threshold temperature will **NOT** be permitted to enter. The threshold temperature is 100.4° F, unless a lower threshold temperature is imposed by the local jurisdiction* or, if applicable, the client.

2. SCREENING QUESTIONS:

Each person will be asked the following questions and any person/household answering “YES” to ANY question will NOT be permitted to enter.

YOUR ENTIRE HOUSEHOLD NEEDS TO BE IN FULL COMPLIANCE WITH OUR CURRENT COVID-19 POLICY, PLEASE BE SURE YOUR RESPONSES ARE ACCURATE AND INCLUDE ALL MEMBERS OF YOUR HOUSEHOLD:

A. In the **preceding 72 hours****, has anyone in your household had any of the following COVID-19-like Symptoms?

- ▶ A cough
- ▶ A sore throat
- ▶ Muscle aches
- ▶ Difficulty breathing
- ▶ New loss of taste or smell
- ▶ Fever at or above the threshold temperature of **100.4° F*** (or would have, but for the use of fever-reducing medicine).

*The threshold temperature is **100.4° F**, unless a **LOWER** threshold temperature is imposed in the local jurisdiction or by the specific center.

B. In the **last 14 days**, has anyone in your household:

- ▶ Had a confirmed case of COVID-19?
- ▶ Had close contact with anyone with a suspected or confirmed case of COVID-19?
- ▶ Been tested or advised to be tested due to a known/suspected exposure to COVID-19?
- ▶ Been advised or directed to quarantine or self-isolate due to COVID-19?
- ▶ Traveled to or from a restricted area?

****Note:** If the exclusionary symptom has already been **cleared** by the COVID team, then a “yes” to the continuing presence of a cleared symptom will not result in an exclusion.

Note: If a member of a household has been tested as part of a standard, scheduled testing protocol by their employer and not due to that individual's symptoms or possible exposure: **THEN** the household will NOT be excluded, provided documentation of the testing policy has been submitted to the center - **UNLESS/UNTIL** a positive result is received.

COVID-19

HEALTH & SAFETY PROTOCOLS



The health and safety of the children in our care is our top priority. As such, all **Bright Horizons*** Child Care Centers follow special COVID-19 health and safety protocols which are developed based on guidance from the Centers for Disease Control, direction from state and local public authorities and in partnership with Dr. Kristin Moffitt, a pediatric infectious disease specialist at Boston Children's Hospital.

Bright Horizons has always operated its child care centers with stringent health and hygiene, cleaning and disinfecting, and illness exclusion policies because regular health and hygiene practices provide some of the best defenses against the spread of contagious illnesses. In response to the increased challenges of COVID-19, we have implemented the following enhanced protocols at our centers:

Enhanced Operating Protocols:

- ▶ **Nonessential visitors** are not permitted in the center
- ▶ **Posted health notice** restricting entry
- ▶ **Drop-offs/pick-ups** are restricted to the lobby or outside the center
- ▶ **Reduced class sizes** – determined with reference to applicable local guidance
- ▶ **Consistent groupings** in separate classrooms
- ▶ **Outdoor time limited to one group at a time**

Enhanced Health and Hygiene Protocols:

- ▶ **Daily temperature and health check** conducted on arrival
- ▶ **Social distancing** is practiced as much as possible
- ▶ Bright Horizons staff **wear face masks/coverings**
- ▶ **Frequent cleaning and disinfecting** of high-touch surfaces, toys, and laundered items
- ▶ **Enhanced COVID-19 exclusion policy** restricting center access in the event of a suspected or known exposure.

Halo Disinfecting Machine

We **disinfect** our school using the
Halo Disinfection System®

EPA-registered to address Coronavirus (COVID-19), Flu, Hand, Foot and Mouth, Norovirus, H1N1, Rhinovirus, MRSA, mold and more

- 99.99% effective against many bacteria, viruses, mold, and fungi
- Helps improve air quality and eliminating odors
- Disinfects surfaces that can't be reached with regular cleaning
- Able to address every part of the learning center including classrooms, gyms, library, toy area, and kitchen/cafeteria
- Reduces cross-contamination associated with traditional "spray and wipe" cleaning methods
- Odorless, colorless, and non-corrosive formula leaves no visible film or residue
- Medical grade-used by hospitals across the country
- Successful in daycares, universities, high schools, offices, homes and gyms



Protection from infection



www.globaldisinfection.com

Global Disinfection Systems

- Chevron purchased for the Early Learning Center
- Halo Machine used weekly as preventative in classrooms
- Used when there is an illness reported
- In addition to the daily cleaning and sanitation procedures we implement throughout the day

ABOUT OUR CENTER



- **Hours**

7:30 a.m. to 5:30 p.m.

- **Accreditation**

NAEYC accreditation initiated

- **Special Features**

Exclusively serving the Chevron community

- **Ages Served**

6 weeks through 5 years old

- **Meals and Snacks**

We provide daily meals and snacks and take care to maintain physical distance during mealtimes.

Nursing Mother's Room



- Available for nursing mothers
- Private and quiet space
- Outlets for pumps if needed
- Sink for handwashing
- Sanitation Station

Onsite Chef



Naomi Saenz
Kitchen Chef

Hot Breakfast, Lunch and Afternoon Snack Provided

- **Nutritional Menu items included**

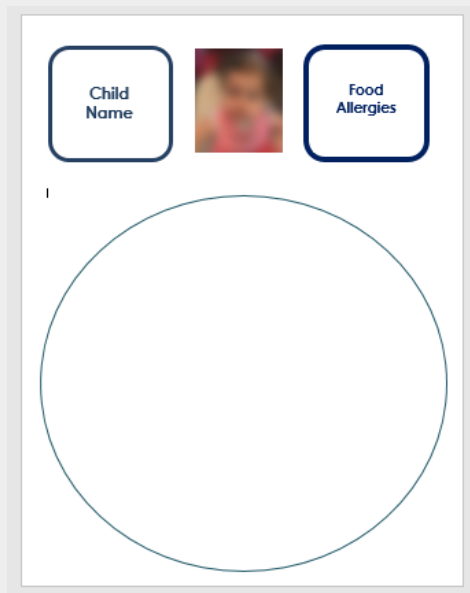
Fresh fruits and vegetables; Organic milk served

- **Vegetarian Options**

We offer vegetarian options or any other food preference or restrictions can be accommodated

- **Food Allergies**

Alternative menu items are offered for any allergies.



A template for a meal form. At the top, there are three rounded rectangular boxes: the first contains the text 'Child Name', the second contains a small, blurry image of a child, and the third contains the text 'Food Allergies'. Below these boxes is a large, empty circle, intended for a drawing or additional notes. The entire form is enclosed in a thin grey border.

■ Meal Times

- 8:30 – 9:00: Breakfast
- 11:30 – 12:00: Lunch
- 3:00 – 3:30: Afternoon snack

■ Meals

- Menu sent home weekly
- Milk served with morning snack and lunch (whole milk for infants and toddlers, 1% for twos and older)
- Accommodations for food allergies and preferences

Ratios

Infant

6 weeks to 12 months

Teacher: Child Ratio 1:4

Toddler

12 months to 24 months

Teacher: Child Ratio 1:5

Twos

24 months to 36 months

Teacher: Child Ratio 1:6

Preschool

36 months to 4 years

Teacher: Child Ratio 1:10

Kindergarten Prep

4 years to 5 years

Teacher: Child Ratio 1:10



CURRICULUM

- Developed by early education experts
- Research-based and meets children where they are developmentally
- A focus on 21st century skills for the changing and evolving world
- Reinforces concepts of math, science, language, social awareness, environment, art, and health
- Exciting learning experiences that support individual growth and development

Curriculum in Action



Language Works

A holistic approach to literacy that integrates listening, speaking, reading, and writing into a language-rich environment



Science Rocks

Encourages children to question, experiment, observe, record, describe, and form conclusions



Art Smart

Explores and builds appreciation for all aspects of the arts, including drama, visual, music, and dance



Math Counts

Develops a solid foundation in mathematical skills and reasoning — to understand, make connections, and build competency in math



Caring Matters

Fosters and supports children's social-emotional development



Well Aware

Promotes positive attitudes towards healthy living, physical activity, and nutrition



Toward A Better World

Helps children learn respect for our world and its diverse people, rich cultural heritage, and environment

MyBrightDay App



Getting Started with *My Bright Day*!

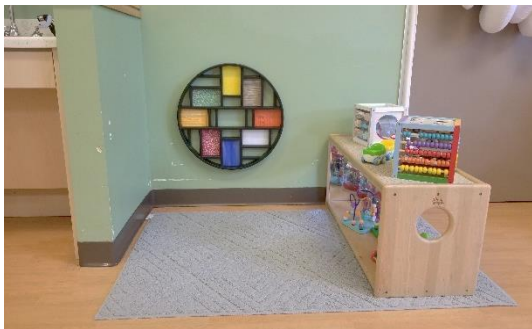


My Bright Day is being provided in partnership with Tadpoles, a leading provider of child care management solutions geared to helping child care programs involve parents and simplify operations. There are three ways for parents to receive and provide information related to their child's daily experience: via the mobile application, via the web, and via email.

1. Mobile Application (recommended)

With the *My Bright Day* mobile application you can submit routine drop off information, login throughout the day to view real time updates on your child's daily activities, see pictures and videos of your child, customize your settings and view the full Daily Experience Sheet at the end of each day.

Infant Classroom



At Bright Horizons, a child's development is based on his/her individual needs. Through independent play and teacher planning, children have countless opportunities to properly grow and develop.

Lesson plans are done weekly. Activities included can be modified for all children regardless of age or developmental level

Classroom materials are all safe and age appropriate. Each item out and available to children develops an important skill.

Child-sized furniture is located throughout the class to promote physical development and a sense of independence.

Curriculum in Action: Learning Centers and Materials - Toddlers



Art Smart



Math Counts



Science Rocks



Curriculum in Action: Learning Centers and Materials - Twos



Art Smart
Visual Arts



Art Smart
Dramatic Play Area



Science Rocks
Discovery Area



Curriculum in Action: Learning Centers and Materials – Preschool/KP



Language Works
Writing Center



Language Works
Classroom Library



Art Smart
Dramatic Play Area



Art Smart
Construction Area

Curriculum in Action: Learning Centers and Materials – Preschool/KP

Art
Smart



Science
Rocks



Diapering/Toileting



**Infant/Toddler diaper
changing area**



Restroom area



**Handwashing
sink**

Napping

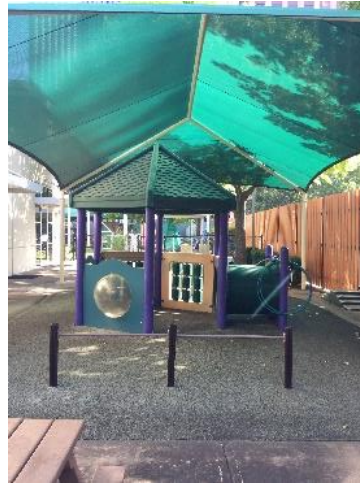


- Naptime is typically 12:30/1:00 – 3:00
- Each child has his/her own cot
- Cots are cleaned daily
- Blankets are provided and washed daily
- Loveys are allowed ONLY at naptime
- Children are encouraged to nap; however, if your child doesn't nap, he/she spends quiet time on cot with books or other quiet activity provided by teacher

The Outdoor Classroom – Infant/Toddlers



Outdoor activity is scheduled twice a day if weather and child schedules allow.



The outdoor exploration period is a time for independent exploration AND planned activities.



Outdoor safety is a priority. The length of time outside is adjusted for weather. Children have as many water breaks as needed.

The Outdoor Classroom – Twos/Preschool/KP



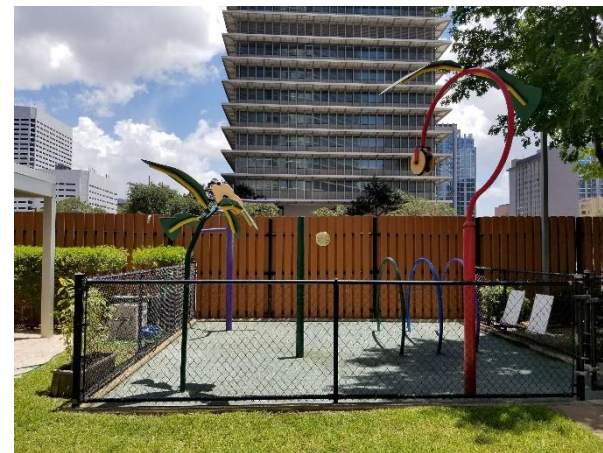
The outdoor environment plays a significant role in a child's education and development. As such, it is seen as an extension of the classroom.



PLAYGROUND – Twos/Preschool/KP



- Garden Works area
- Splash Pad for Water Play
- Limited to one group at a time
- Equipment sanitized after each use



Chevron Sponsored Enrichments



ARTIST IN RESIDENCE



Local Houstonian artist, Angel Oloshove, conducted a six-week session on ceramics for the Preschool and KinderPrep classes. This six-week program is sponsored by Chevron at no additional cost to families.

theHoustonMuseumofnaturalscience



Virtual Music Classes were offered during the summer while our center was closed. We continue to have weekly music class with Ms. Melita Silberstein from California!

Contact Information



Email us at
1505@brighthorizons.com

Call us at
713-739-0230

Register Today!

www.familyinfocenter.brighthorizons.com

www.brighthorizons.com/1505

“There’s not a minute I worry. I never say ‘I hope she’s ok,’ because I know she’s ok. She’s happy when I drop her off, and happy when I pick her up.”

— Bright Horizons Parent

