



**JON J. P. FERNANDEZ**  
Superintendent of Education

# DEPARTMENT OF EDUCATION OFFICE OF THE SUPERINTENDENT

www.gdoe.net  
500 Mariner Avenue  
Barrigada, Guam 96913  
Telephone: (671) 300-1547/1536 • Fax: (671) 472-5001  
Email: jonfernandez@gdoe.net



August 31, 2020

## MEMORANDUM


**TO:** Guam Public Auditor  
Speaker, Mina Trentai Cinco | Liheslaturan Guahan

**FROM:** Superintendent of Education

**SUBJECT:** Department of Education - Citizen's Centric Report 2020

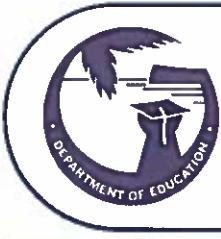
*Hafa Adai!* It is my pleasure to submit the Guam Department of Education's Citizen's Centric Report 2019. Pursuant to Public Law 30-127, the report captures the Department's progress on accreditation, performance measurements, and finances for Fiscal Year 2019 and School Year 2018-2019; and accordingly, has been posted to our GDOE website [www.gdoe.net](http://www.gdoe.net).

On behalf of the students and staff in the Department of Education, I extend my warmest thanks and appreciation for your support and commitment to improving the educational system.

  
**JON P. FERNANDEZ**  
Superintendent of Education

## Attachment

**CC:** Chairwoman and Members, Guam Education Board  
Deputy Superintendent, Finance and Administrative Services



# Guam Department of Education (GDOE) Citizen Centric Report FY2019



DEPT. 2020F

## IN THIS ISSUE

ABOUT US.....Page 1  
 PERFORMANCE.....Page 2  
 FINANCE.....Page 3  
 COVID-19 IMPACTS.....Page 4  
 FUTURE CHALLENGES.....Page 4

### MISSION STATEMENT

*Our Educational Community  
 Prepares all Students for Life,  
 Promotes Excellence, and Provides Support*

### LEADERSHIP

Jon J.P. Fernandez  
*Superintendent*

Dr. Zenaida (Zeny) T. Asuncion, CPA  
*Deputy Superintendent,  
 Finance & Administrative Services*

Joseph L.M. Sanchez  
*Deputy Superintendent,  
 Curriculum & Instructional Improvement*

Erica Cruz  
*Deputy Superintendent  
 Educational Support & Community Learning*

Erica Cruz, Acting  
*Deputy Superintendent  
 Assessment & Accountability*

### GUAM EDUCATION BOARD

#### Chair

Maria A. Gutierrez

#### Vice-Chair

Mark B. Mendiola

#### Members

Felicitas 'Fely' B. Angel

Lourdes Benavente

Carlyn R.C.G. Borja

John T. Burch

Ray P. Chargualaf, Jr.

James A. Lujan

Dr. Ronald L. McNinch

#### Ex-Officio Members

Alternating, IBOGS Representative

Doris A. Terlaje, GFT Representative

Mayor Melissa B. Savares, Representative

#### Executive Secretary

Jon J.P. Fernandez

www.gdoe.net |

## ABOUT US

GDOE is a single unified and accredited school district consisting of Kindergarten through 12th grade which administers Head Start, pre-Kindergarten GATE programs, and is piloting pre-Kindergarten classes at selected schools. Our 26 elementary, 8 middle, 6 high and 1 alternative schools serve about 30,000 students and are managed by the Superintendent, who is the chief executive officer for the department, and the Executive Secretary of the 12-member Guam Education Board. GDOE is accredited by the Western Association of Schools and Colleges, and uses the following two standards-based or criterion-referenced testing to assess student progress: ACT Aspire, based on the Common Core Standards in English/Language Arts & Math for grades 3-10; and Standards-Based Assessments (SBA) for grades 1-12 in English/Language Arts, Math, Science and Social Studies content areas.

### GDOE STATE STRATEGIC PLAN

- Goal # 1** All students will graduate from high school prepared to pursue post-secondary education on or off-island or to assume gainful employment with the private or public sector
- Goal # 2** All students will successfully progress from grade to grade and from one level of schooling to another in order to maximize opportunities to successfully graduate from high school
- Goal # 3** All Guam Department of Education personnel will meet high standards for qualifications and on-going professional development and will be held accountable for all assigned responsibilities
- Goal # 4** All members of the Guam Department of Education Community will establish and sustain a safe, positive and supportive environment
- Goal # 5** All Guam Department of Education operations activities will maximize the critical uses of limited resources and meet high standards of accountability

### By the Numbers SY 2019-2020

(as of September 30, 2019)

Enrollment	
<i>*Students are counted in their school population.</i>	
*Headstart	526
* GATE/Pre-K	196
* Kinder	1,882
Elementary	13,145
Middle	6,466
High	9,044
Alternative	157
<b>Total</b>	<b>28,812</b>

### Personnel By Funding

(as of September 28, 2019)

Local	2,811
Federal	762
Fed/Local	22
<b>Total</b>	<b>3,595</b>



# PERFORMANCE

## School Stats

- Cohort graduation rate up 2.8% in SY2018-19 from 84.5% to 87.3%.
- 302 students dropped out, 48 more or .6% rate increase over SY2017-18.
- 1,909 children with disabilities served or 6.43% of total enrollment as of October 1, 2018 under GDOE's Division of Special Education Part B Program.
- 1,413 classroom teachers with masters or professional certifications, 267 with basic or initial certification, and 2 with either standard or temporary certification.
- SY2018-19 marked the fifth year of ACT Aspire summative assessment of student performance and the introduction the Work Keys assessment used to gauge students' ability to enter the workforce.
- 903 students or 48% of graduates in SY2018-19 achieved bronze, silver, gold and platinum levels in the Work Keys assessment. For complete assessment results go to [www.gdoe.net](http://www.gdoe.net)

	GRADUATION		DROPOUT			
	SY 17-18	SY 18-19	SY 17-18	SY 17-18	SY 18-19	SY 18-19
High School	Number	Number	Number	Rate (%)	Number	Rate (%)
G.Washington	334	324	43	2.6%	50	3.2%
J.F. Kennedy	387	353	31	1.6%	111	5.8%
Okkodo	351	332	46	2.4%	3	3.2%
S. Sanchez	352	344	25	1.5%	57	0.2%
Southern	318	274	68	4.7%	20	1.5%
Tiyan	262	244	41	3.1%	61	4.7%
JP Torres	69	77	38	16.4%	34	14.4%
<b>Total</b>	<b>2,073</b>	<b>1,948</b>	<b>254</b>	<b>2.6%</b>	<b>302</b>	<b>3.2%</b>

## SY18-19 Aspire Comparative Results: GDOE versus Benchmark

Measure	Grade	English	Reading	Math
ACT Aspire Benchmark	3	413	415	413
GDOE	3	413	408	409
GDOE Readiness Level	3	Ready	In Need	Close
GDOE versus Benchmark	3	0	-7	-4
ACT Aspire Benchmark	4	417	417	416
GDOE	4	416	410	412
GDOE Readiness Level	4	Close	In Need	Close
GDOE versus Benchmark	4	-1	-7	-4
ACT Aspire Benchmark	5	419	420	418
GDOE	5	419	413	412
GDOE Readiness Level	5	Ready	In Need	Close
GDOE versus Benchmark	5	0	-7	-6
ACT Aspire Benchmark	6	420	421	420
GDOE	6	420	414	414
GDOE Readiness Level	6	Ready	In Need	Close
GDOE versus Benchmark	6	0	-5	-6
ACT Aspire Benchmark	7	421	423	422
GDOE	7	421	416	412
GDOE Readiness Level	7	Ready	In Need	In Need
GDOE versus Benchmark	7	0	-7	10
ACT Aspire Benchmark	8	422	424	425
GDOE	8	424	419	416
GDOE Readiness Level	8	Ready	Close	In Need
GDOE versus Benchmark	8	+2	-5	-9
ACT Aspire Benchmark	9	426	425	428
GDOE	9	424	418	416
GDOE Readiness Level	9	Close	In Need	In Need
GDOE versus Benchmark	9	-2	-7	-12
ACT Aspire Benchmark	10	428	428	432
GDOE	10	426	420	418
GDOE Readiness Level	10	Close	In Need	In Need
GDOE versus Benchmark	10	-2	-8	-14

## VISION

Every student:

RESPONSIBLE

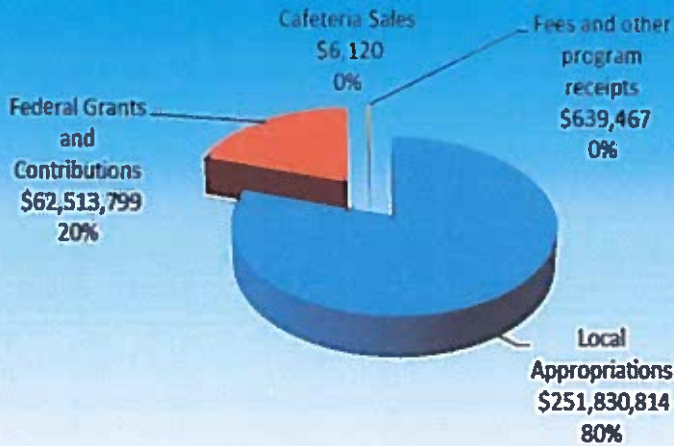
RESPECTFUL

READY FOR LIFE

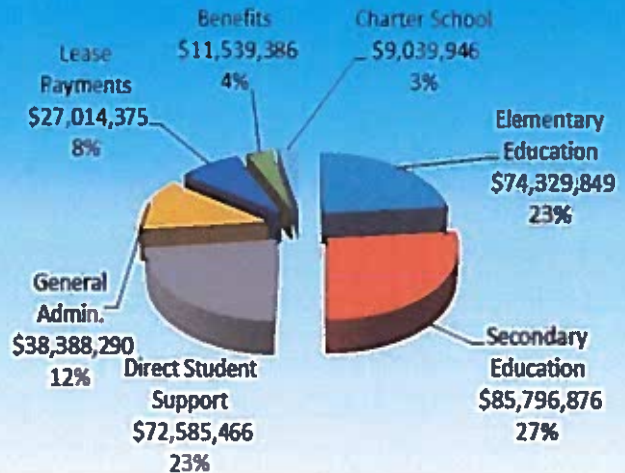


# FINANCES

## Revenue Breakdown FY 2019



## Expenditures Breakdown FY 2019



	FY2019	FY2018
Total Revenues	314,990,200	319,162,051
Total Expenditures	318,694,188	321,800,799
Excess (deficiency) of revenues over under expenditures	(3,703,988)	(2,638,748)
Total other financing sources (used), net	-	-
Net change in fund balances	(3,703,988)	(2,638,748)
Fund balances (deficit) at beginning of the year	2,232,052	4,870,800
Fund balance (deficit) at end of year	(1,471,936)	2,232,052

### Charter School Expenditure



## FY2019 Financial Highlights

- Revenues ↓ by \$4.17M or -1.31% compared to FY18: \$4.3M decrease in appropriations, \$908K in fees and program fees, \$25,093 in cafeteria sales, offset by \$1M increase federal grants and contributions.
- Expenditures ↓ by \$3.1M or -0.97% compared to FY18: \$5.9M decrease in personnel, \$227K in capital acquisitions, \$132K in misc/indirect; offset by increases \$1.6M charters, \$1.4M in utilities, \$189K in operations categories.
- Personnel expenses accounted for \$216.2M (\$187.9M local \$28.2M federal) or 67.8% in FY19 compared to \$222.2M (\$191.1M local and \$30.7M federal) or 69% in FY18.
- FY19 Utilities accounted for 5.2% of total expenditures or \$16.6M, an increase of \$1.4M compared to FY18.
- FY19 marked the last fiscal year charter school funding was included in GDOE appropriations; and included funding for a new charter school, Science Is Fun and Awesome (SIFA) and netted \$9M or 2.84% in FY19 expenditures.

Grantor	FY2019	FY2018
U.S. Dept. of Agriculture	\$ 14,514,570	\$ 13,988,385
U.S. Dept. of Education	\$ 38,003,067	\$ 41,428,920
U.S. Dept. of Health & Human Services	\$ 3,453,514	\$ 3,285,873
U.S. Dept. of Interior	\$ 11,262,330	\$ 8,939,368
U.S. Dept. of Defense (JROTC)	\$ 616,360	\$ 476,277
U.S. Dept. of Homeland Security	\$ 130,669	\$ 74,251
<b>Total Federal Expenditures</b>	<b>\$ 67,980,510</b>	<b>\$ 68,193,564</b>

- Federally funded expenditures accounted for \$67.9M or 21.3% total expenditures compared to \$68.1M in FY18, an decrease of \$213,054.
- GDOE's FY2019 deficit of \$1.471M was a result of:
  - ⇒ Allotment shortage of \$2.6M; and
  - ⇒ Over \$1.2M payment of prior year and carry over of FY18 obligations due to reduced funding caused by the Federal Tax Cut and Jobs Act of 2017.

# FUTURE CHALLENGES



## Message from the Superintendent:

Buenas yan Hafa Adai! The ongoing COVID 19 pandemic is affecting the way we live, work and go-to-school. Because the spread of this pandemic has the potential to make our community sick, the GDOE has implemented new safety protocols at all school levels to include required facer coverings on GDOE

facilities, temperature checks upon arrival, physical distancing, frequent cleaning of common and high traffic areas, safety signs and protocols. Home learning for students has begun with various models of Instruction: 1) Online Instruction; 2) Hard copy curriculum,; and 3) Face-to-Face (FTF) learning. FTF model has recently been put on hold under Governor Lou Leon Guerrero's Executive Order as a result of the recent rise of COVID 19 cases.

### Stay Connected:

Parents are asked to contact their child's school regularly to find out schedule and teacher contact information. With the many of these changes underway, it is important to keep an open line of communication with your child's school. We ask for your patience during these unprecedented times. We can do this together!  
JON J.P. FERNANDEZ.

### COVID-19 Impacts—The New Normal

The Guam Public Emergency related to COVID-19 was first announced in March 2020. Schools closed for the remainder of SY19-20 on March 16, 2020. GovGuam subsequently established Pandemic Condition of Readiness (PCOR) levels 1-4 and DPHSS established guidelines for school operations.

#### ⇒ Classroom and Instructional Reforms

Superintendent appointed the District School Readiness Task Force (DSRTF) in May 2020. DSRTF implemented Centers for Disease Control & Prevention (CDC) guidance and worked with government leaders, healthcare experts, teachers and parents to plan the safe re-opening of GDOE schools. GEB adopted 3 models of instruction for FY20-21: home learning on-line, home learning hard copies, traditional face to face in school.

Education Services established *A Parent's Guide to Special Education During the COVID-19 Pandemic: Hita Para Mo'na* in order to assist parents and provide information on instruction and services. (<https://www.gdoe.net/District/Department/2-Special-Education>)

#### ⇒ COVID-19 Funding

USEd awarded \$41M to Guam through the Education Stabilization Fund (ESF) to Outlying Areas. GDOE, as ESF State Education Agency will be administering the relief to public, private non-public and charter schools. The grant will support priorities such as distance learning, health and safety, professional development, technology, and social and emotional wellness.



### Hita Para Mo'na Parent Guide - COVID-19

[https://www.gdoe.net/files/user/13/file/SPED%20HPM%20ParentGuide%20HitaParaMonaCOVID%207\\_6\\_20.pdf](https://www.gdoe.net/files/user/13/file/SPED%20HPM%20ParentGuide%20HitaParaMonaCOVID%207_6_20.pdf)

**SCHOOL SAFETY AND COVID-19**

All Guam recognizes the ongoing COVID-19 health situation, safety remains a top priority for all Guam Department of Education schools. The GDOE is working to safely reopen schools that fall through new safety protocols aligned with guidance from the Centers for Disease Control and Prevention (CDC) to include:

- Masking at mask to face on all GDOE facilities
- Frequent cleaning of common areas and high traffic areas/surfaces
- Temperature checks upon arrival
- Frequent washing of hands
- Physical distancing
- COVID-19 with education for students and staff
- Physical safety signs and posters

## District School Readiness Task Force

The Superintendent of Education appointed the GDOE School Readiness Task Force in May 2020. The School Readiness Task Force (SRTF) is following Centers for Disease Control and Prevention (CDC) guidance and working with government leaders, healthcare experts, school administrators, teachers and parents to plan the reopening of GDOE schools during School Year 2020-2021. The SRTF consists of six committees:

1. Operations, Safety and Social Distancing
2. Curriculum & Distance Learning
3. Personnel Management
4. Social & Emotional Wellness

## WHAT LIES AHEAD: GDOE FY2021 Budget

Bill 282-35 is currently deliberated as of this CCR issuance with a bleak GDOE FY21 budget as a result of a cost cutting plan by the Government of Guam of about 5% across the board. GDOE's 5% share is approximately \$11 million.

	FY20	Difference
Bill 282-35	allotment	(Dec.) Inc.
General Fund	\$178.87 M	(\$10.32 M)



Visit GDOE's 'Parents and Students Portal at:

<https://www.gdoe.net/District/Portal/>

## We appreciate your feedback.

Please contact us if you would like to see other information included in our Citizen Centric Report. Guam Department of Education, 500 Mariner Ave Barrigada, Guam 96913 Email: [Superintendent@gdoe.net](mailto:Superintendent@gdoe.net)

