

1959 Toyota FJ-25



This 1959 Toyota FJ-25 is in fair running and driving condition with flaws to note.

Exterior

This vehicle has excessive scratches all over the exterior. The vehicle shows minor miscellaneous dings around the body. The vehicle has miscellaneous dents in varying sizes all around the exterior. The paint shows fade and wear throughout. The underside shows moderate surface rust and some rot. See photos. There are two holes through the rear floor. The doors are plexiglass and have duct tape present throughout. The soft top is in good condition with no tears or heavy wear notable.

Interior

The horn does not work. The rear seats are torn and show heavy wear. The front seats show light wear. The interior trim shows moderate wear with some paint chipping and surface rust notable. See photos. The dash has been cut into to install the aftermarket radio. An aftermarket tachometer has been installed, and is operational. All of the other interior functions, controls, and accessories not yet noted are working properly as designed. There were no odd smells in the vehicle at the inspection,

and this is a non-smoker vehicle.

Mechanical

There is a notable coolant leak on the underside of the vehicle, near the petcock. The engine is seeping some oil from the underside. There were no drips at time of inspection. This area should be cleaned off and rechecked to verify source of leak or leaks. There was some play felt in the steering wheel due to worn steering components. More diagnosis necessary. All of the wheels are in good condition with no curb rash or cracking notable. The tires are dry rotted and need to be replaced.

Test Drive

The engine had plenty of power and there were no misfires or smoking. The transmission shifted as designed with no harsh engagement or slipping. The vehicle wanders while driving on the road. This is due to loose steering components. There were no abnormal vibrations or odd noises. There is no brake booster installed, so braking is difficult and the vehicle takes a while to come to a complete stop. See below and pictures for more info.

Vehicle Info	
Year - 1959	
Make - Toyota	
Model - FJ-25	
Mileage - 19977	
Transmission - Manual	
VIN Number - 9-FJ25-12537L	
Interior - Leather	
Interior Color - Grey	
Body Color - Green	
Engine - 6 Cylinder	
Drive Type - Four Wheel Drive	
Fuel Type - Gas	
Engine Number - F107813	

Exterior	
Back-up Camera	✓
Wiper Blades	✓
Windshield Washer	✓
Body Alignment	✓
Scratches	✗
This vehicle has excessive scratches all over the exterior.	
Dings	✗
The vehicle shows minor miscellaneous dings around the body.	
Dents	✗
The vehicle has miscellaneous dents in varying sizes all around the exterior.	
Paint Condition	✗
The paint shows fade and wear throughout.	
Rust	✗
The underside shows moderate surface rust and some rot. See photos.	
Exterior Lights	✓
Bumpers	✓
Side Moldings	✓
Convertible Top	✓
Frame Damage	✓
Glass	✓

Mechanical	
Air Filter	✓
Battery Condition	✓
Charging System	✓
Cooling Fan Condition	✓
Radiator Cap Sealing Properly	✓
Hoses	✓
Radiator	✓
Engine Coolant	✓
Coolant Leaks	✗
There is a notable coolant leak on the underside of the vehicle, near the petcock.	
Belts	✓
Engine Oil	✓
Engine Fluid Leaks	✗
The engine is seeping some oil from the underside. There were no drips at time of inspection. This area should be cleaned off and rechecked to verify source of leak or leaks.	
Transmission Fluid	✓
Transmission Leaks	✓
Brake System	✓
Brake Fluid Leaks	✓
Transfer Case Leaks	✓
Differential leaks	✓
Muffler System	✓
CV Joints and Axles	✓
Shocks and bushings	✓
Ball Joints and Tie Rods	✗
There was some play felt in the steering wheel due to worn steering components. More diagnosis necessary.	
Modifications	✓

Road Test	
Road Test	✓
Engine Performance	✓
Transmission performance	✓
Clutch Performance	✓

Body Filler?	✓
Hood	✓
Doors	✗
The doors are plexiglass and have duct tape present throughout.	
Floors	✗
There are two holes through the rear floor.	
Rockers	✓
Quarter Panels	✓

Interior

Steering Wheel	✓
Horn	✗
The horn does not work.	
Seat Condition	✗
The rear seats are torn and show heavy wear. The front seats show light wear.	
Seat Belts	✓
Radio/Navigation	✓
Inner Door Panels	✓
Dash	✗
The dash has been cut into to install the aftermarket radio.	
Dash Gauges	✗
An aftermarket tachometer has been installed, and is operational.	
Heater	✓
Interior Trim	✗
The interior trim shows moderate wear with some paint chipping and surface rust notable. See photos.	

Differential Performance	✓
Transfer Case Performance	✓
Wheel Bearing Performance	✓
Braking Performance	✗
There is no brake booster installed, so braking is difficult and the vehicle takes a while to come to a complete stop.	
Suspension Performance	✓
Steering Performance	✗
The vehicle wanders while driving on the road. This is due to loose steering components.	
Engine Starting	✓

TIRES/WHEELS

Spare Tire	✓
------------	---

Tire Manufacturer

Driver's Front - Destone
Passenger's Front - destone
Driver's Rear - destone
Passenger's Rear - destone

Tire Size

Driver's Front - 750/16
Passenger's Front - 750/16
Driver's Rear - 750/16
Passenger's Rear - 750/16

Tire Condition


Driver's Front - Dry Rot
Passenger's Front - Dry Rot
Driver's Rear - Dry Rot
Passenger's Rear - Dry Rot

Wheel Condition

Driver's Front - No Issues
Passenger's Front - No Issues
Driver's Rear - No Issues
Passenger's Rear - No Issues

Tire Tread

Driver's Front - 14/32
Passenger's Front - 14/32
Driver's Rear - 14/32
Passenger's Rear - 14/32



10/32 OR MORE
Tires have plenty of tread! (standard)
8/32 OR MORE
Tires have plenty of tread! (low profile)
5/32 TO 7/32
Tires will need replacement soon!
4/32 OR LESS
Tires need replacement!

1



2







5



















14



15

























27







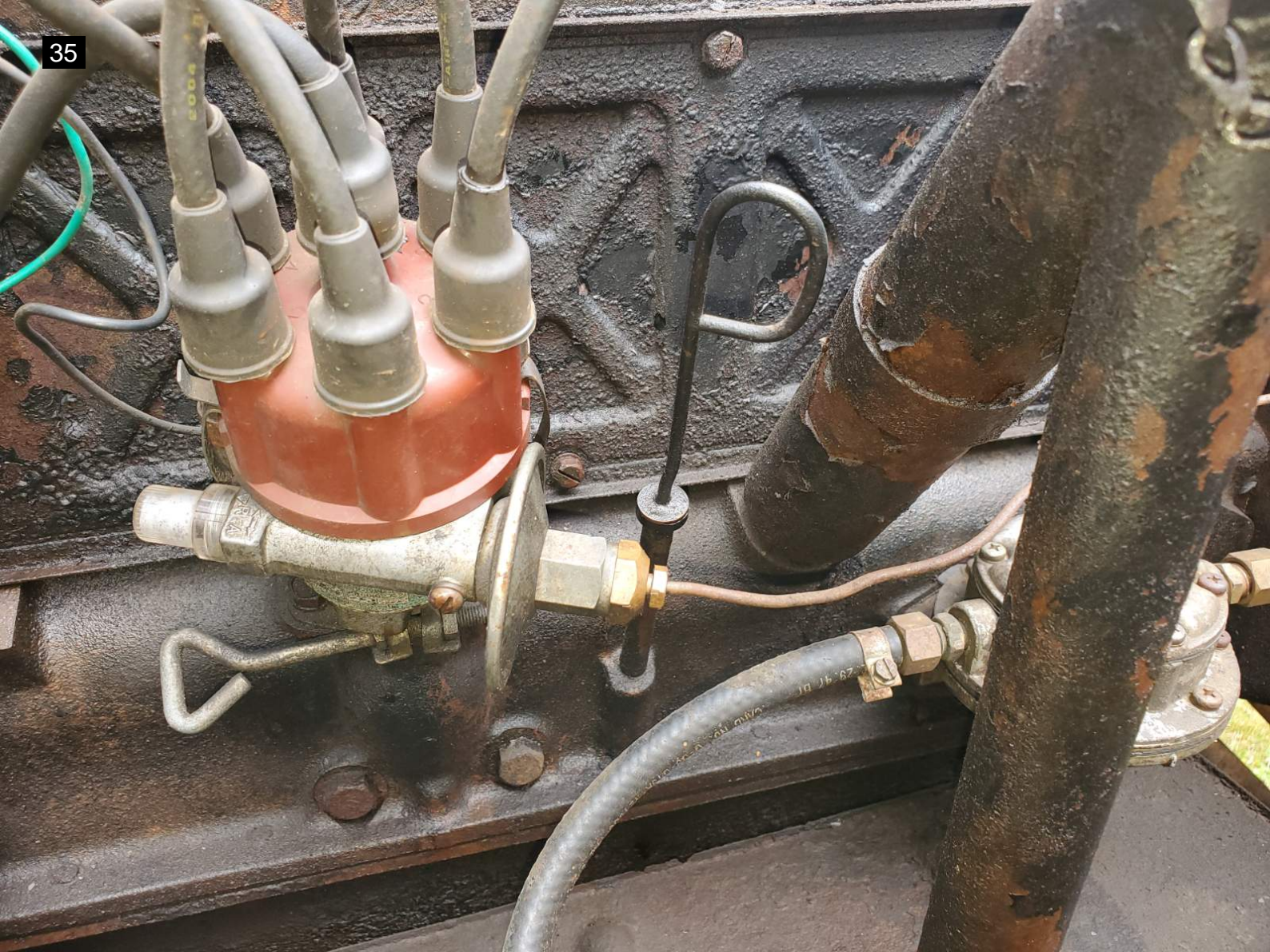


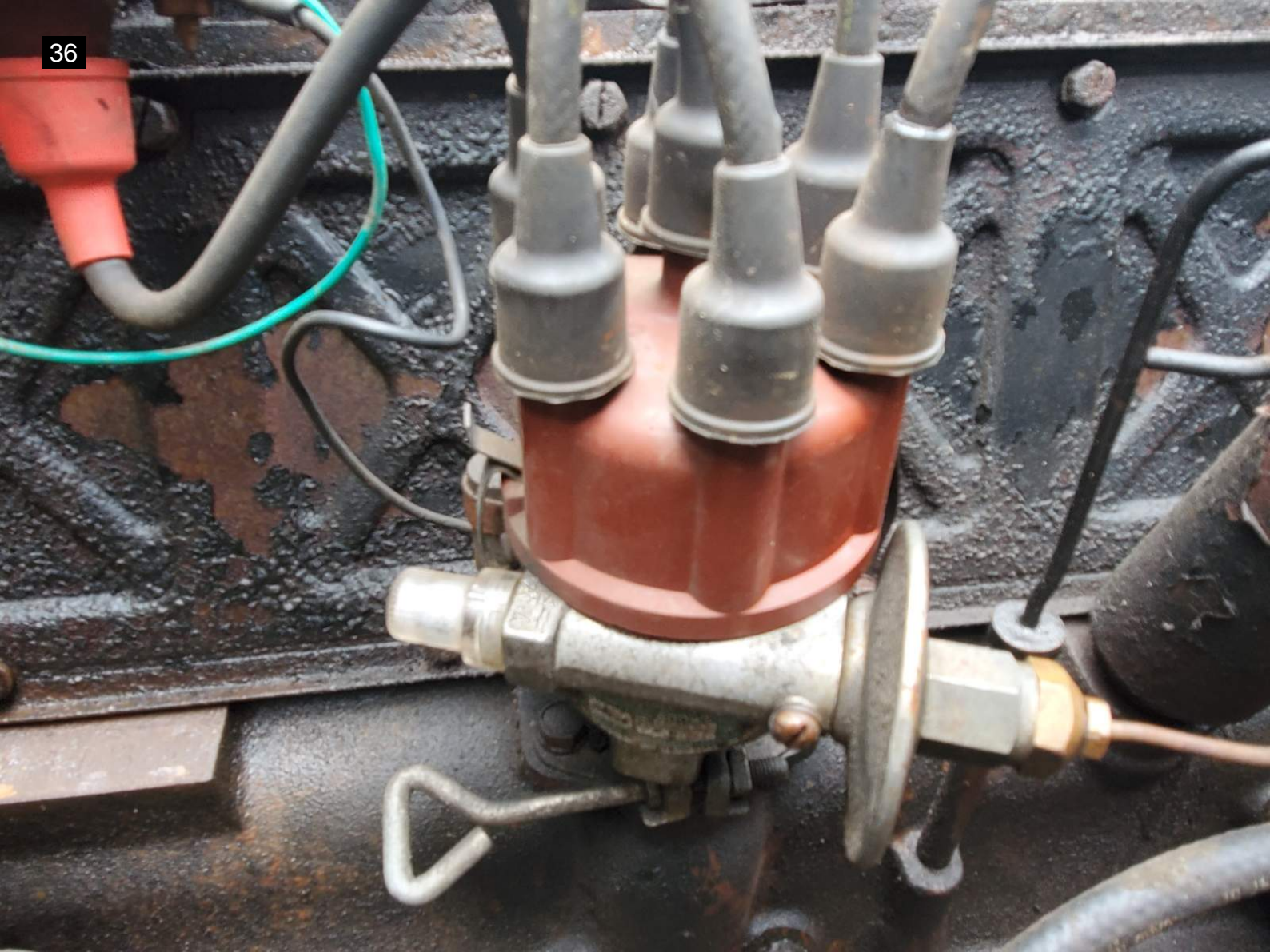












































DISENGAGE FRONT AXLE DRIVE WHEN
DRIVING ON HARD SURFACED ROADS

TRANSMISSION



FRONT AXLE DRIVE

○ DISENGAGED

● ENGAGED

TIRE INFLATION PRESSURES

HIGHWAY 27 lb/in²

CROSS COUNTRY 22 lb/in²

MUD OR SAND 15 lb/in²









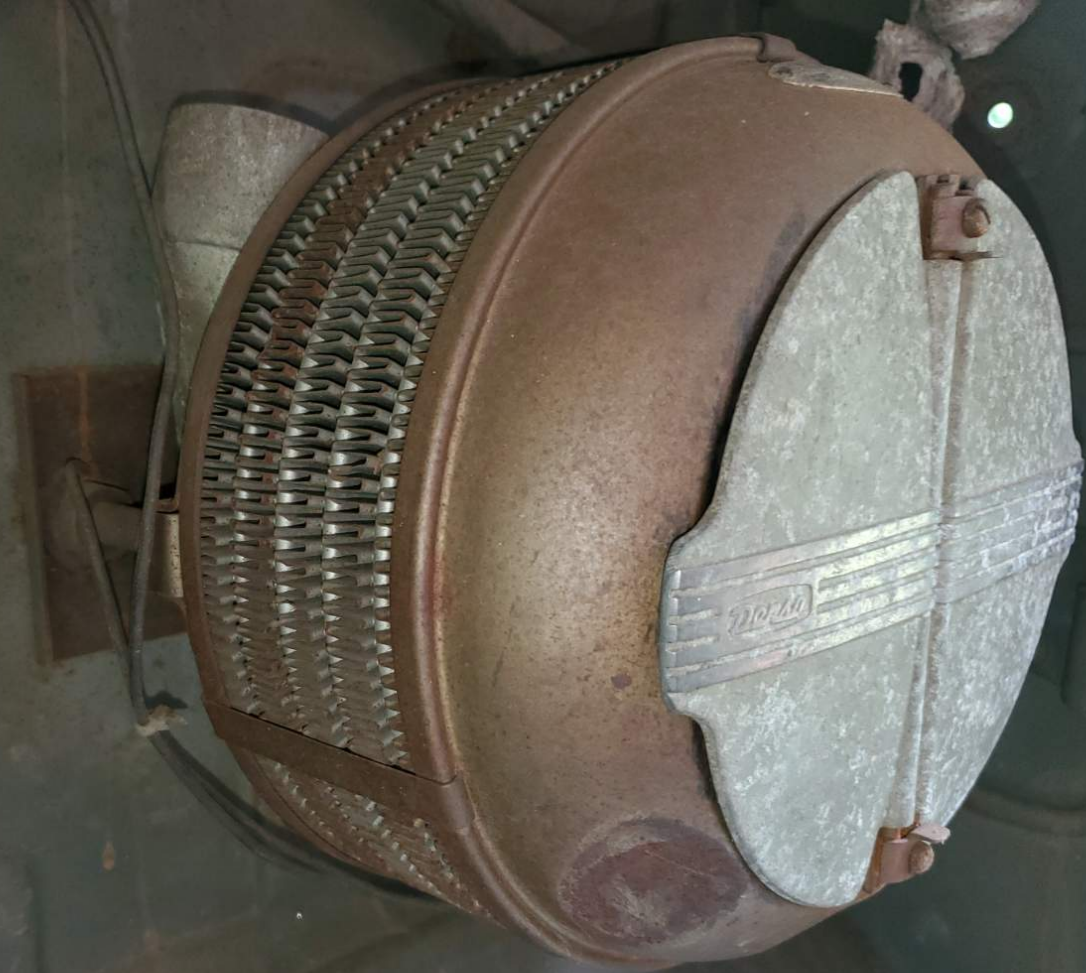






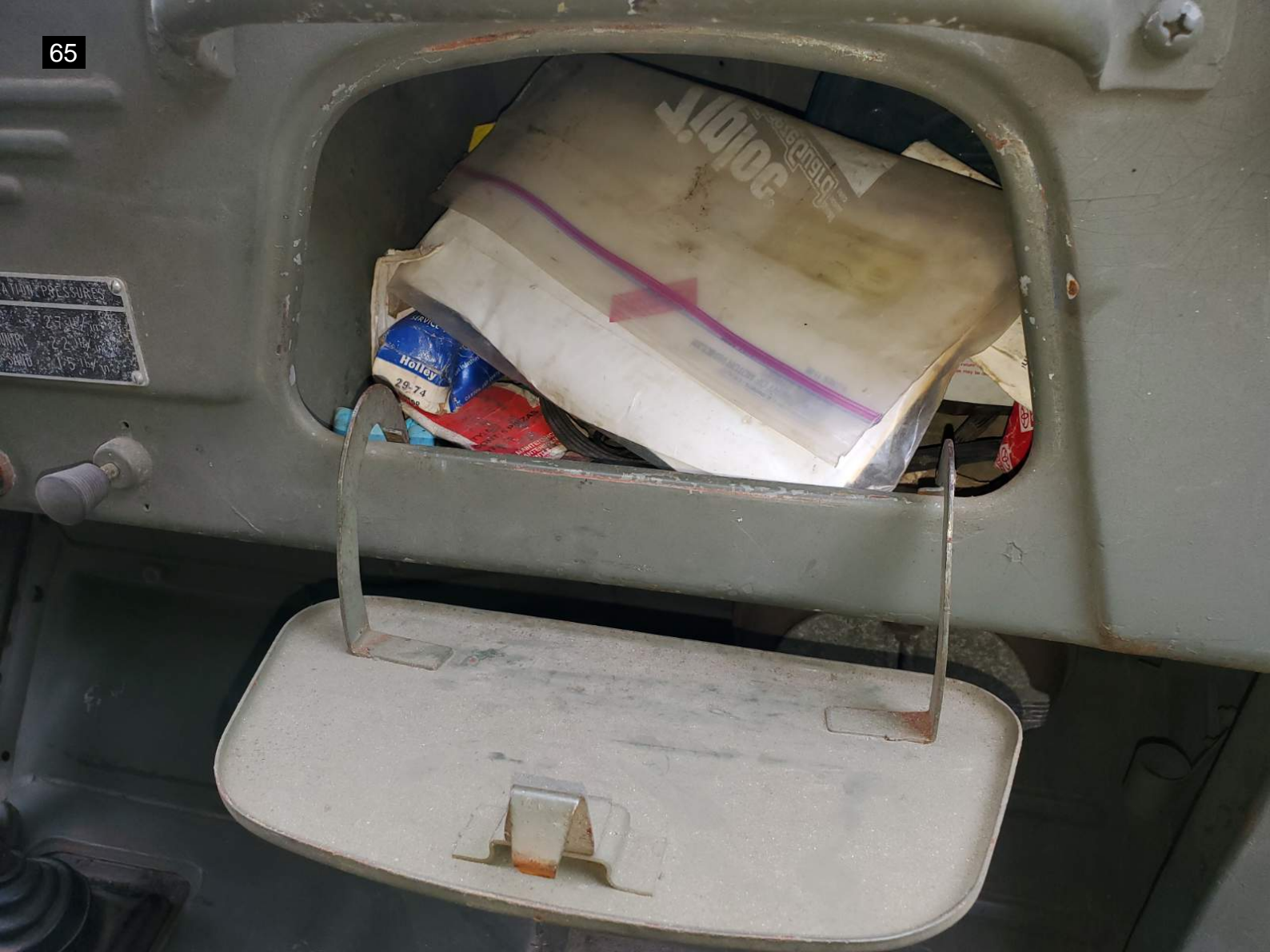
















































































100





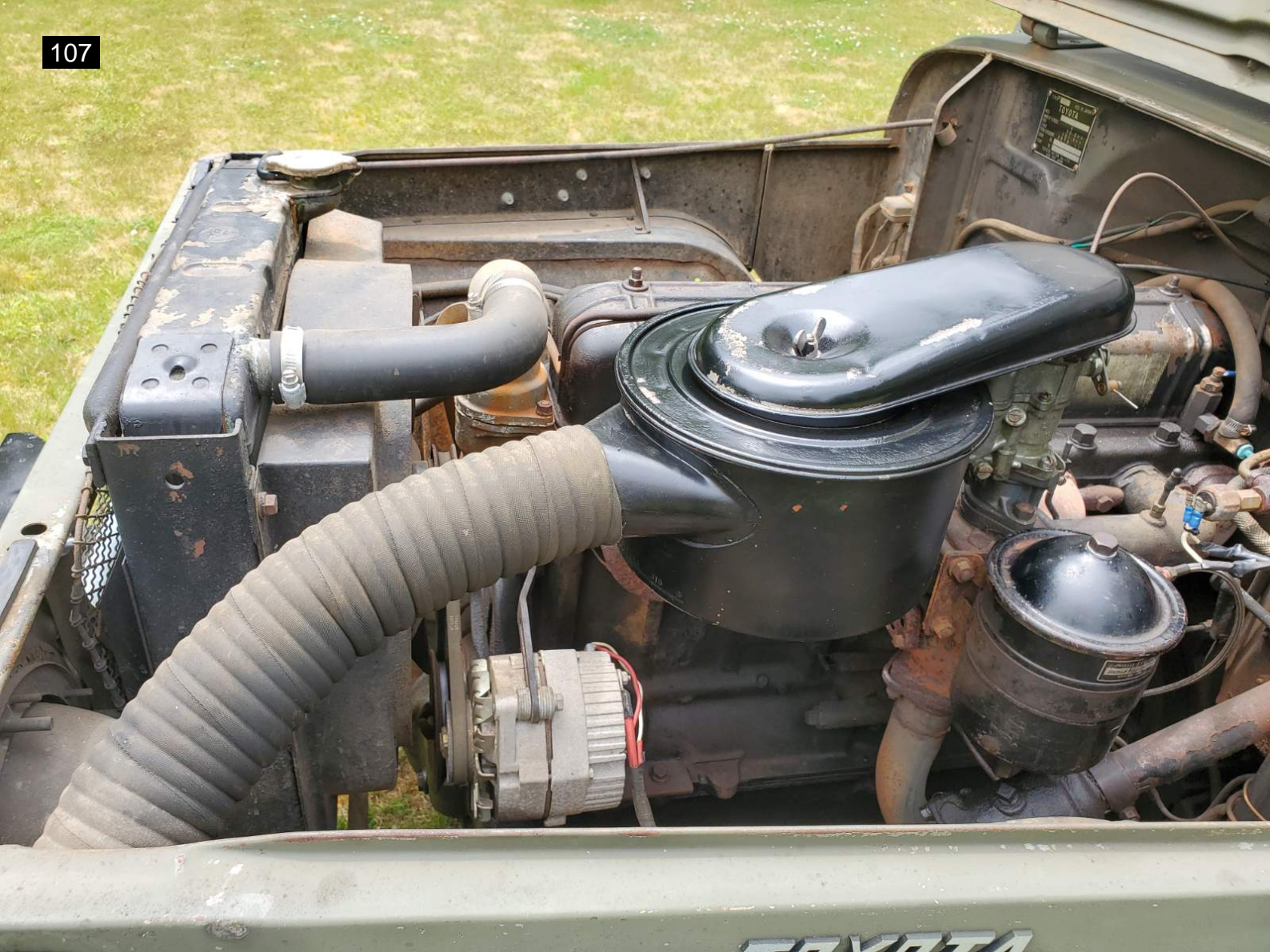


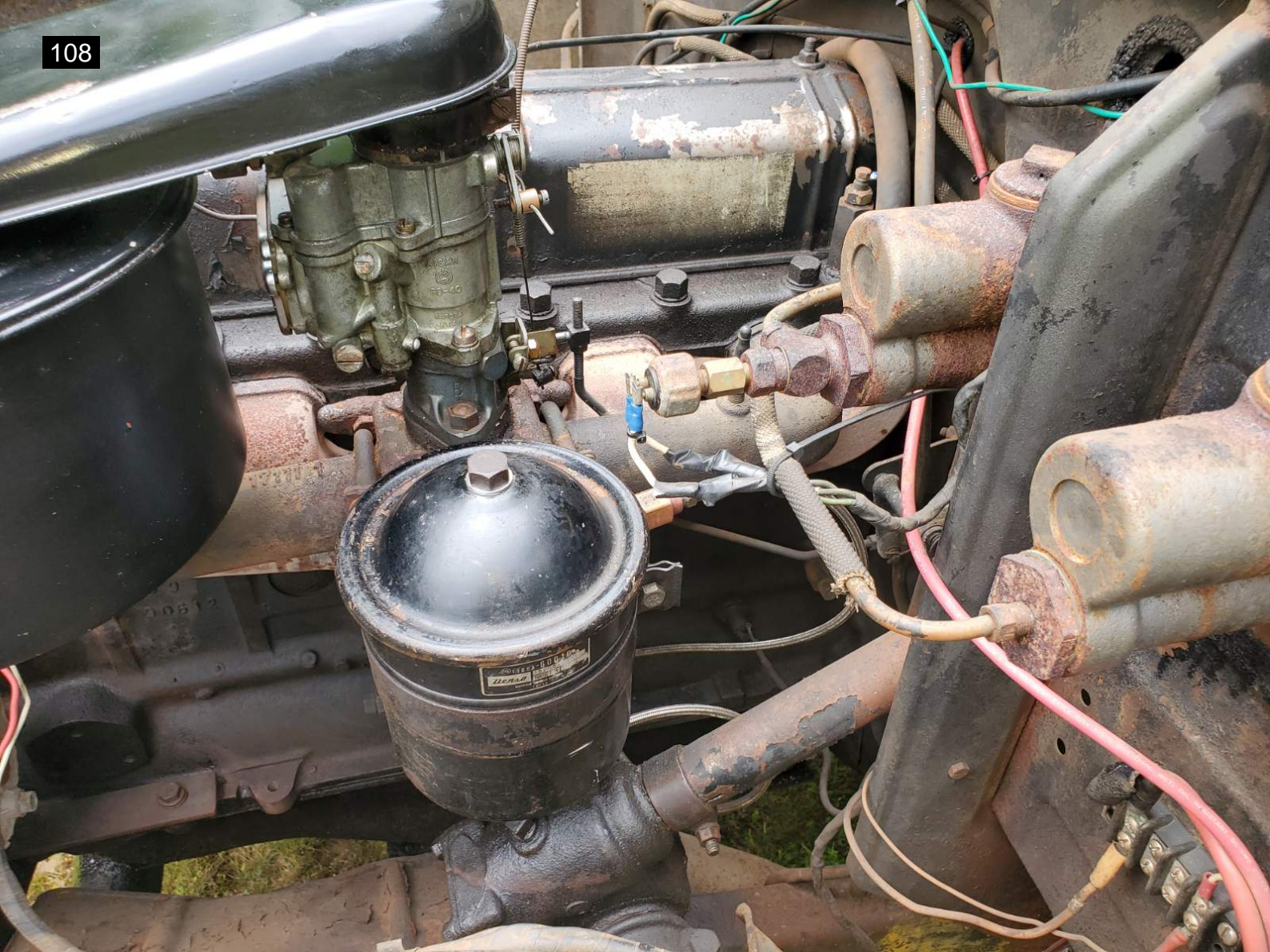




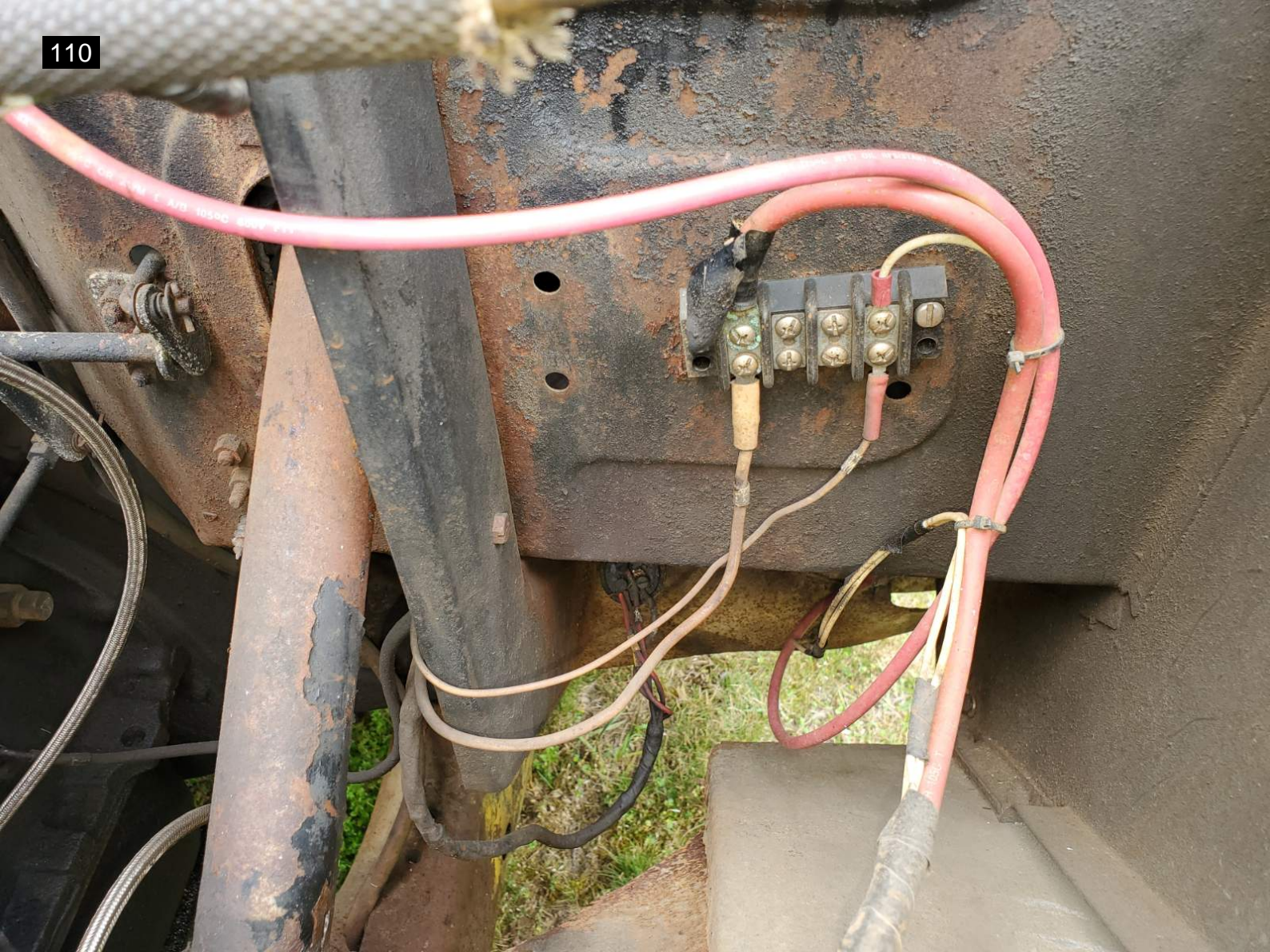


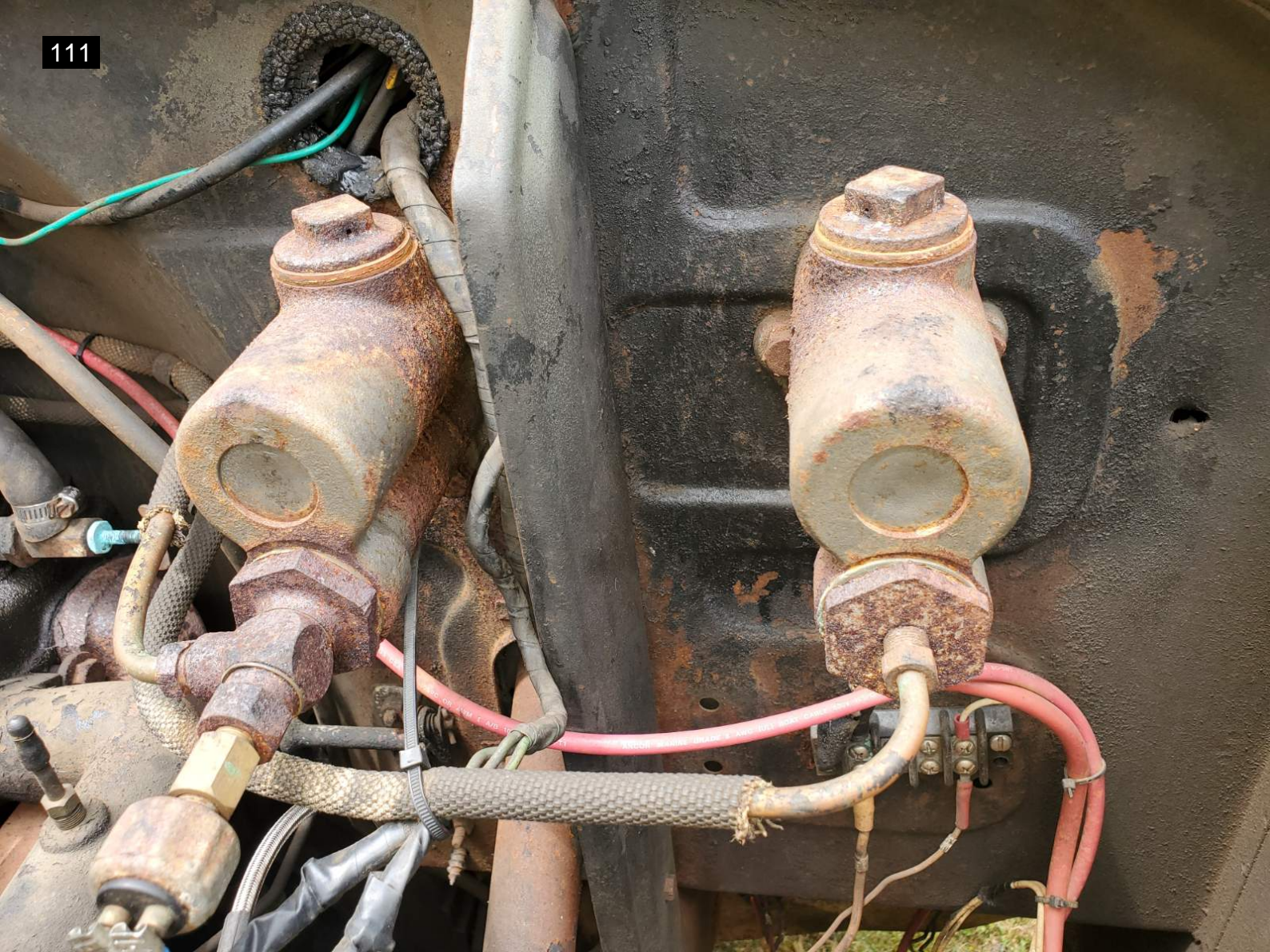
9-FJ2B-12537L



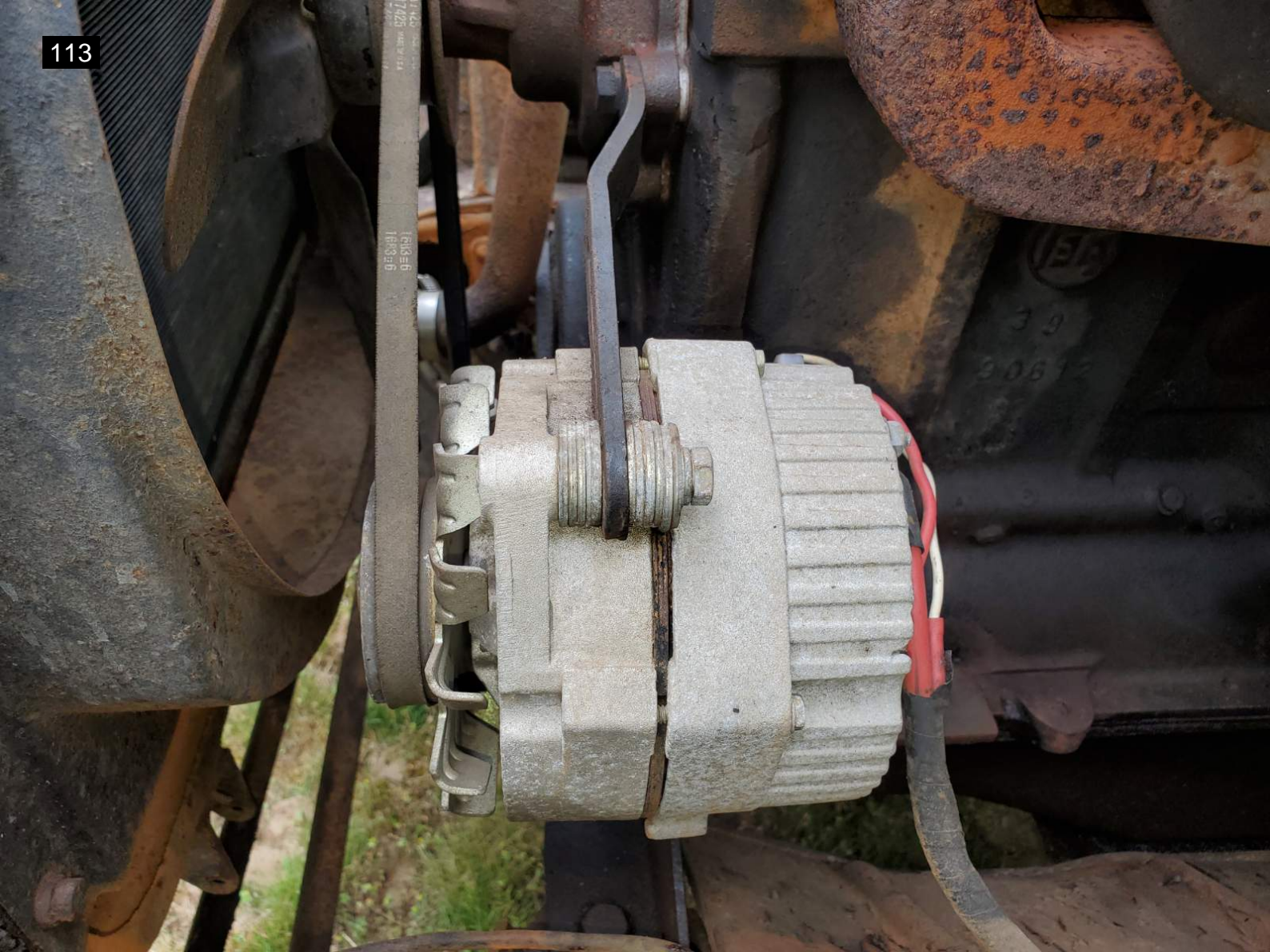














1-5-3-0-2-0 F17151



39

90612



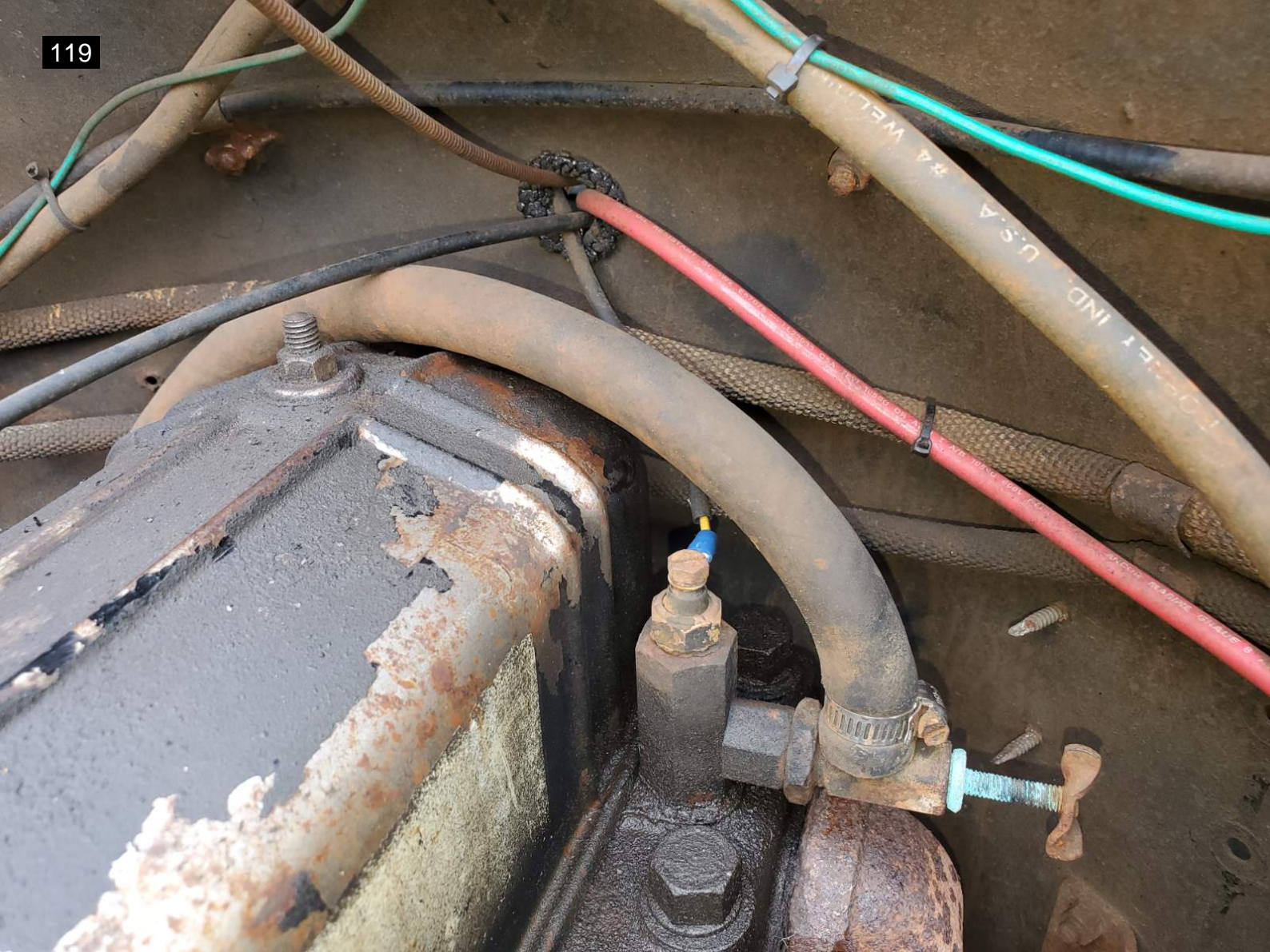




39

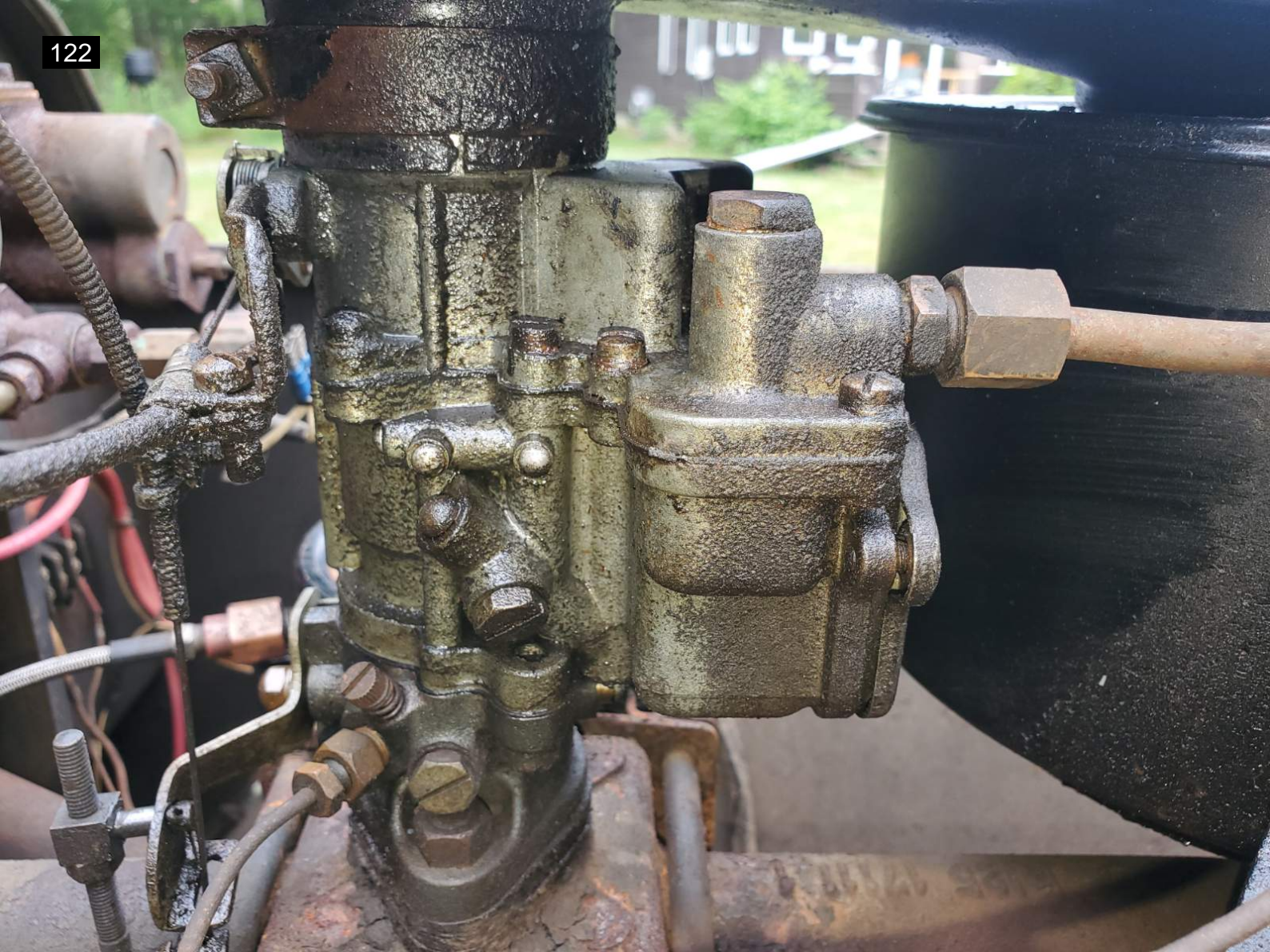
30512







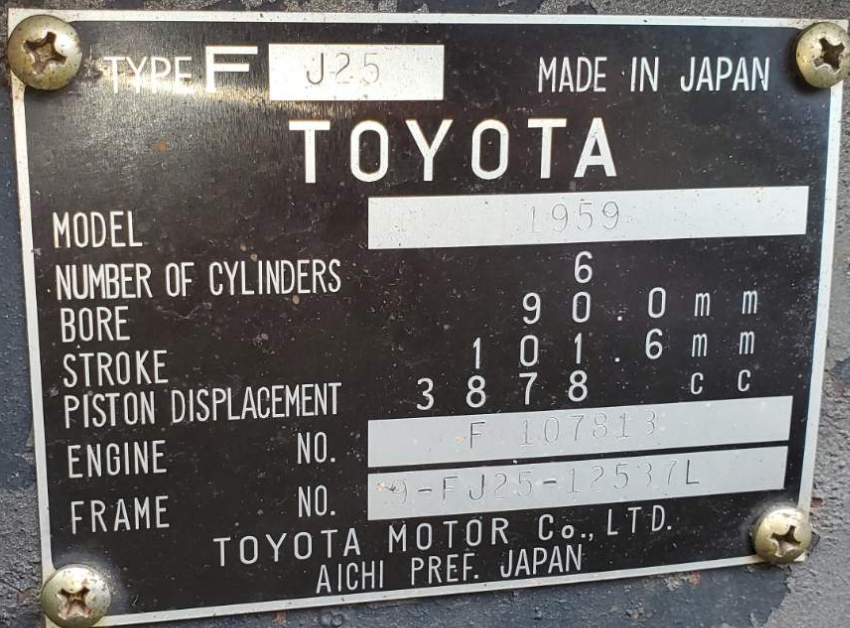


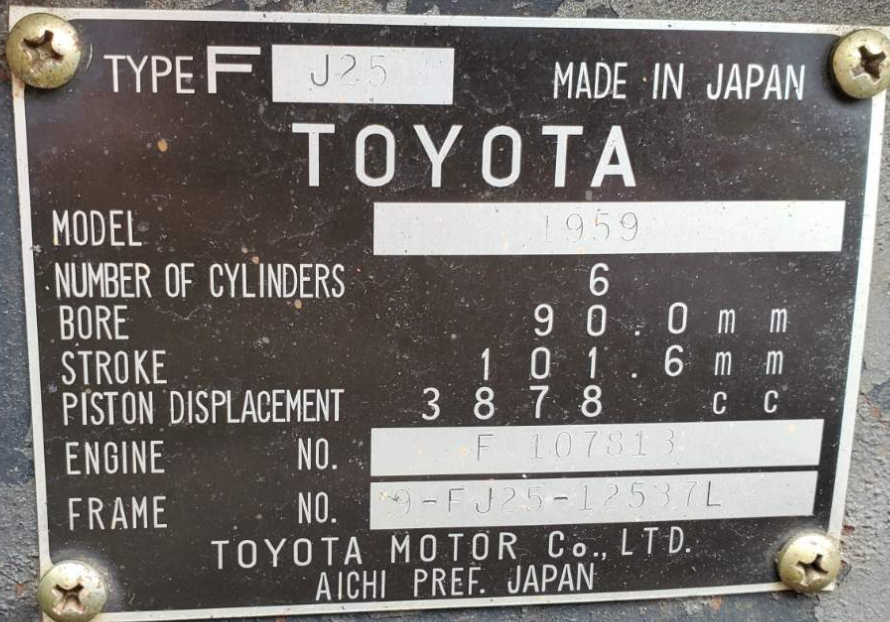


































TOYOTA

MODEL	
YEAR	
TYPE	
ENGINE	
TRANSMISSION	
AXLES	
WHEELS	
TIRES	
OTHER	



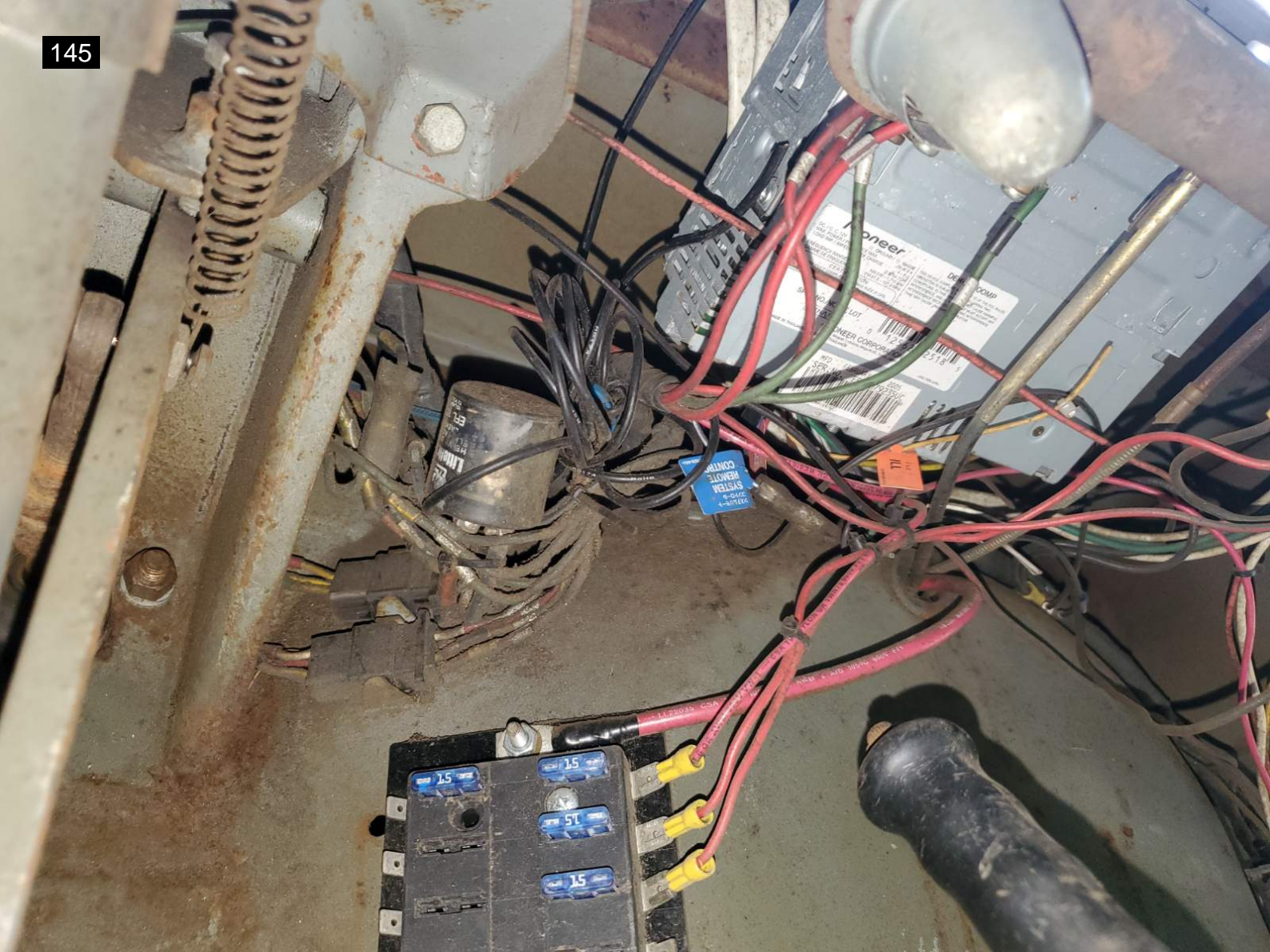






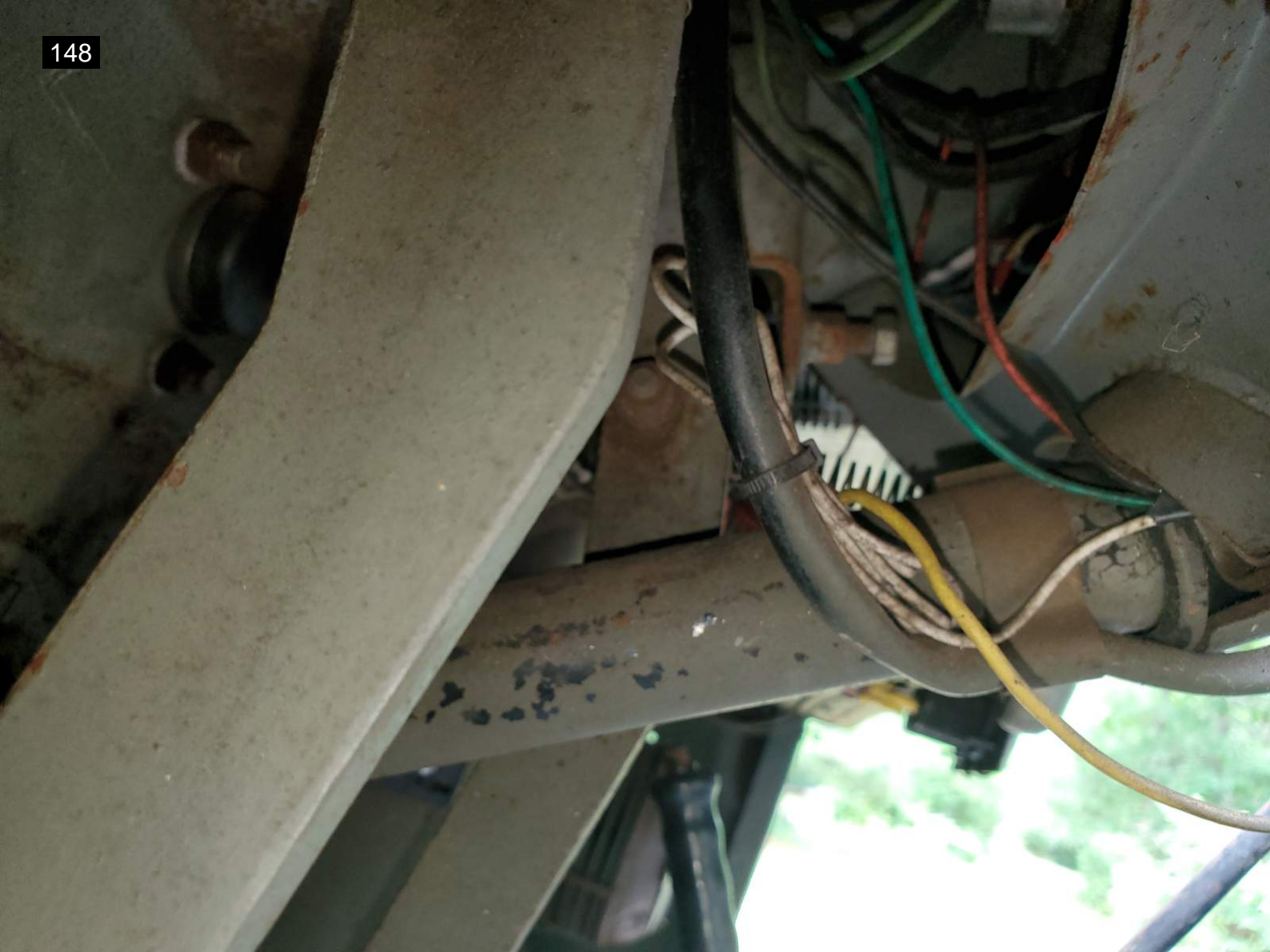










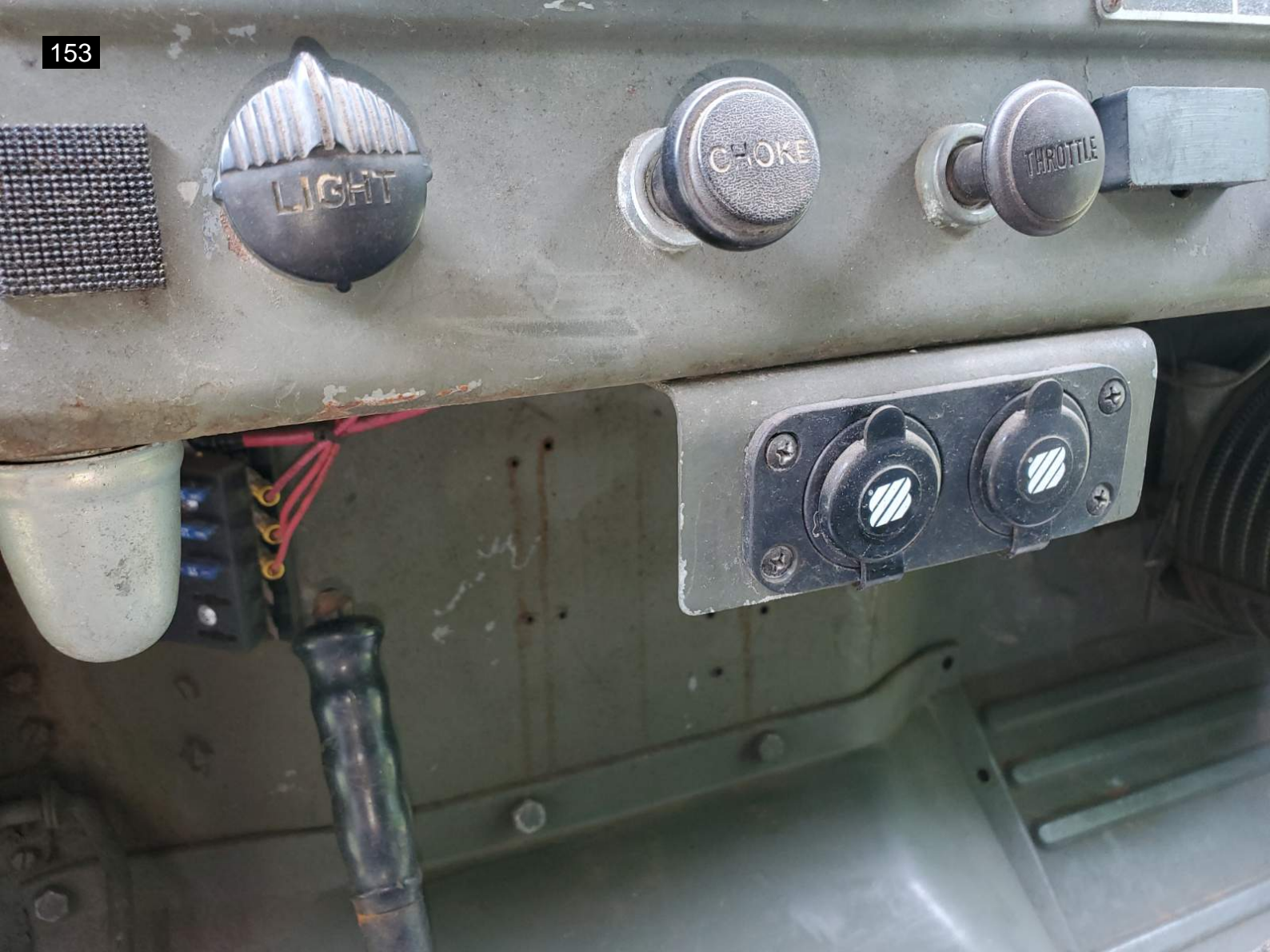














































171













177





TOYOTA













TOYOTA
Land Cruiser





































MADE IN THAILAND

12 P.R. MAX. LOAD SINGLE SITE 2850 LBS. (1300 KG)
LOAD RANGE 1, TUBE TYPE

SAFETY WARNING: NEVER EXCEED THE MAX. LOAD
INDICATED ON THE TIRE/RAIN ASSEMBLY DUE TO IMPROPER MOUNTING
OR EXCESSIVELY INFLATED TIRES. ALWAYS FOLLOW OWNERS
INSTRUCTIONS FOR PROPER USE TO AVOID INFLATION/OVERLOADING.

7.50-16

DOT 28







































