

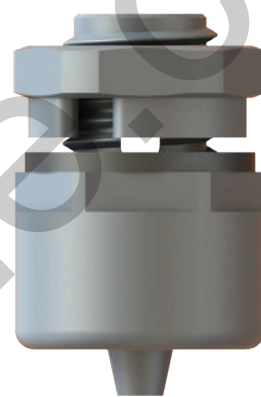
## Drain Plugs Polyamide

### Drain Plugs

- Balances pressure differences between inner housing and the outside environment.
- Prevents damages according to pressure differences.
- Prevents the formation of water condensation in tightly-sealed standard housings.
- Membrane properties: hydrophobic, oleophobic.

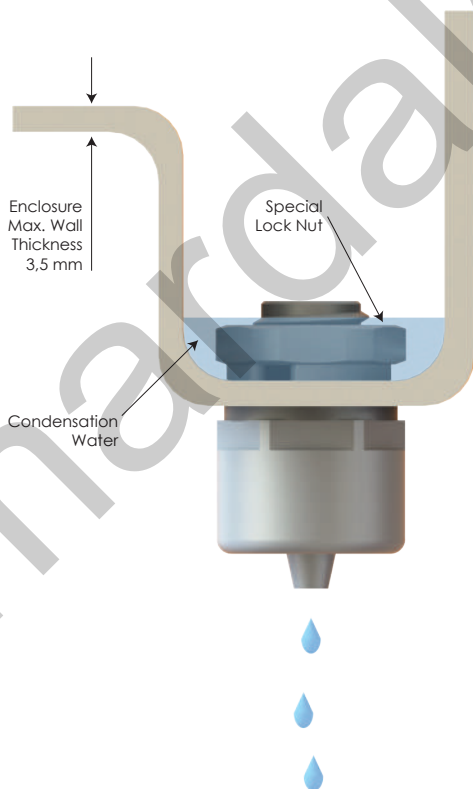
### Technical Details

<b>Material</b>	<b>Body</b>	PA 66	
<b>Ingress Protection Rating</b>	IP 56 / IP 66 (Category 2)		
<b>Flammability</b>	V2 according to UL94		
<b>Operating Temperature</b>	<b>Permanent</b>	-20 °C to +100 °C	
	<b>Intermittent</b>	-30 °C to +150 °C	
<b>Thread Type</b>	• Metric EN 60423		
<b>Accessories</b>	• Lock nuts • Gaskets (Washers)		
<b>Remarks</b>	• We recommend the use of lock nuts and gaskets to ensure IP rating for rough surfaces or through holes. • Accessories must be ordered separately.		

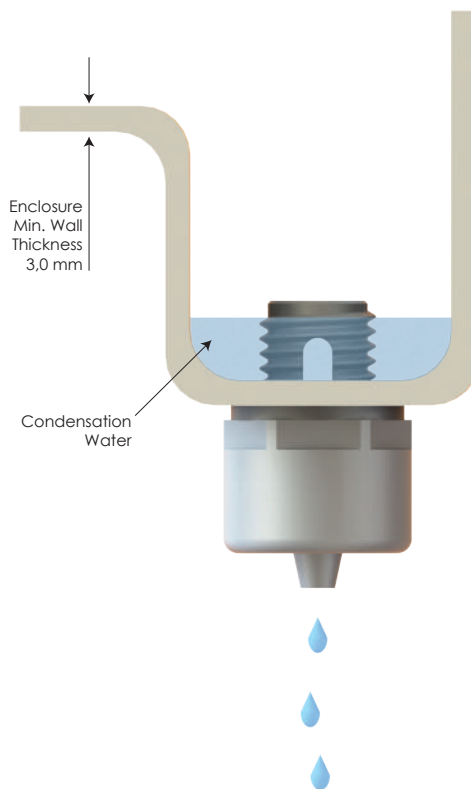


<b>Order Coding</b>			
<b>Part Number</b>	-	<b>Lock Nut</b>	
Mandatory	-	Option	
See table	-	L	Lock nut
<b>Example</b>			
BPDRP-11	-	L	

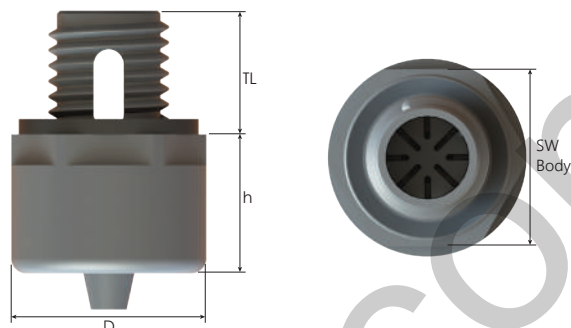
With special lock nut



Without special lock nut

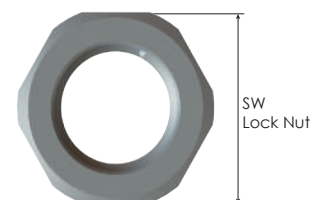
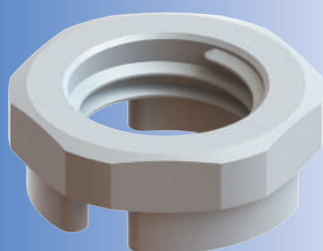


## Drain Plugs Polyamide



Thread Type **METRIC** acc. to EN 60423

Outer Thread Size (Male)	Outer Thread Length TL mm	Outer Ø D mm	Height h mm	Part Number			Minimum Order Quantity
				RAL 7035 light grey	RAL 7001 grey	RAL 9005 black	
M12x1,5	12,0	19,0	17,0	BPDRP-11	BPDRP-01	BPDRP-21	500



## Special Lock Nuts for Drain Plugs

Inner Thread Size (Female)	Spanner Width SW Lock Nut mm	Outer Ø D mm	Height h mm	Part Number			Minimum Order Quantity
				RAL 7035 light grey	RAL 7001 grey	RAL 9005 black	
M12x1,5	18	19,2	7,0	BMDL-1S	BMDL-0S	BMDL-2S	500