

Symphonies for Youth

MAR 9 & 23, 2024

*Swan Lake:  
Reimagined*



WALT DISNEY **20** CONCERT HALL

**LA Phil** GUSTAVO DUDAMEL  
MUSIC & ARTISTIC DIRECTOR

# Symphonies for Youth *Swan Lake: Reimagined*

**SATURDAY, MAR 9 & 23, 2024, 11AM**

Los Angeles Philharmonic  
Anna Handler, conductor  
Matt McCray, director  
Kitty McNamee, choreographer  
Quinn O'Connor, stage manager  
Cathy Cooper, costume designer  
Karyn Lawrence, lighting designer  
Jay Donnell, host  
Nadia Maryam, dancer  
Alejandro Perez, dancer  
Katherine Cowgill, dancer  
Megan Goldstein, dancer  
Jennifer Mika, dancer



Scan to learn more about our conductor, creative team, and cast.

## PROGRAM

**TCHAIKOVSKY** Selections from *Swan Lake*

### PRE-CONCERT ACTIVITIES CREATIVE TEAM

Andrea Miller, producer and curator  
4C LAB, activities facilitators

Cover artwork and illustrations by Eric O. Potma

### WALT DISNEY CONCERT HALL HOUSE STAFF

Sergio Quintanar, Master Carpenter  
Marcus Conroy, Master Electrician  
Kevin F. Wapner, Master Audio/Video  
Greg Flusty, House Manager

The stage crew is represented by the International Alliance of Theatrical Stage Employees and Moving Picture Machine Operators of the United States and Canada, Local No. 33.

The lighting designer is represented by United Scenic Artists, Local 829 of the International Alliance of Theatrical Stage Employees. The director and choreographer are members of the Stage Directors and Choreographers Society, an independent national labor union. The actor, dancers, and stage manager appear through the courtesy of Actors' Equity Association.

## Pre-Concert Art Activations

Before each concert, families can immerse themselves in all-ages art activities that encourage imaginative play at the following locations:

**BP HALL  
GARDEN LEVEL WEST  
GARDEN LEVEL EAST  
BLUE RIBBON GARDEN  
KECK AMPHITHEATRE  
FRIENDSHIP CIRCLE**

Activations end at 10:45am.

## Support for Symphonies for Youth

Leadership support for the LA Phil's Learning and Community Initiatives is provided by Anonymous (4), Ballmer Group, Barbara and Scott Bice, The Eisner Foundation, Max H. Gluck Foundation, The Rose Hills Foundation, Anonymous (2), Amgen Foundation, The Music Man Foundation, Rosenthal Family Foundation, James and Laura Rosenwald/Orinoco Foundation, and Sony Pictures Entertainment Inc.

Leadership support for the LA Phil's Learning and Community Endowment Fund is provided by the A. Jerrold Perenchio YOLA Endowment Fund, The Peggy Bergmann YOLA Endowment Fund, The Walt Disney Company, Los Angeles Philharmonic Committee, The Rafael and Luisa de Marchena-Huyke Foundation, Carrie and Stuart Ketchum, George L. Cassat, Lee and Hope Landis Warner YOLA Student Fund, Norma D. Kayser Trust, Alfred E. Mann Charities, Sue Tsao, Mr. Gregory A. Adams, Mr. Kevin MacCarthy and Ms. Lauren Lexton, Y&S Nazarian Family Foundation, Judith and Thomas L. Beckmen, and Ying Cai & Wann S. Lee Foundation.

For more information about our learning programs, please visit [laphil.com/learning](http://laphil.com/learning).

© 2024 Los Angeles Philharmonic.  
All Rights Reserved

# Meet The Characters

*Swan Lake* is a love story about Prince Siegfried, who falls in love with the Swan Queen, Odette, during a hunting trip. But Odette can take human form only between midnight and daybreak because of a curse by the evil sorcerer Baron von Rothbart. True love is the only thing that can break the spell.



## **Rothbart**

is a manipulative and powerful sorcerer who casts a spell on Princess Odette.

## **Siegfried**

is a handsome prince who falls in love with Odette. To marry Odette, he must break the spell.

## **Odette**

is a beautiful princess transformed daily into a white swan by Rothbart, returning to human form each night.

## **Odile**

Rothbart's daughter, attends the Royal Ball disguised as Odette to lure Siegfried away from the real Odette.

## **The Queen**

is Siegfried's overbearing and controlling mother, who wants Siegfried to marry a suitable princess.

# Swan Lake Maze

In all its twists and turns, a maze reflects life's journey and offers a fun way to practice strategy, patience, and perseverance. Find your way to the castle under the moonlight.

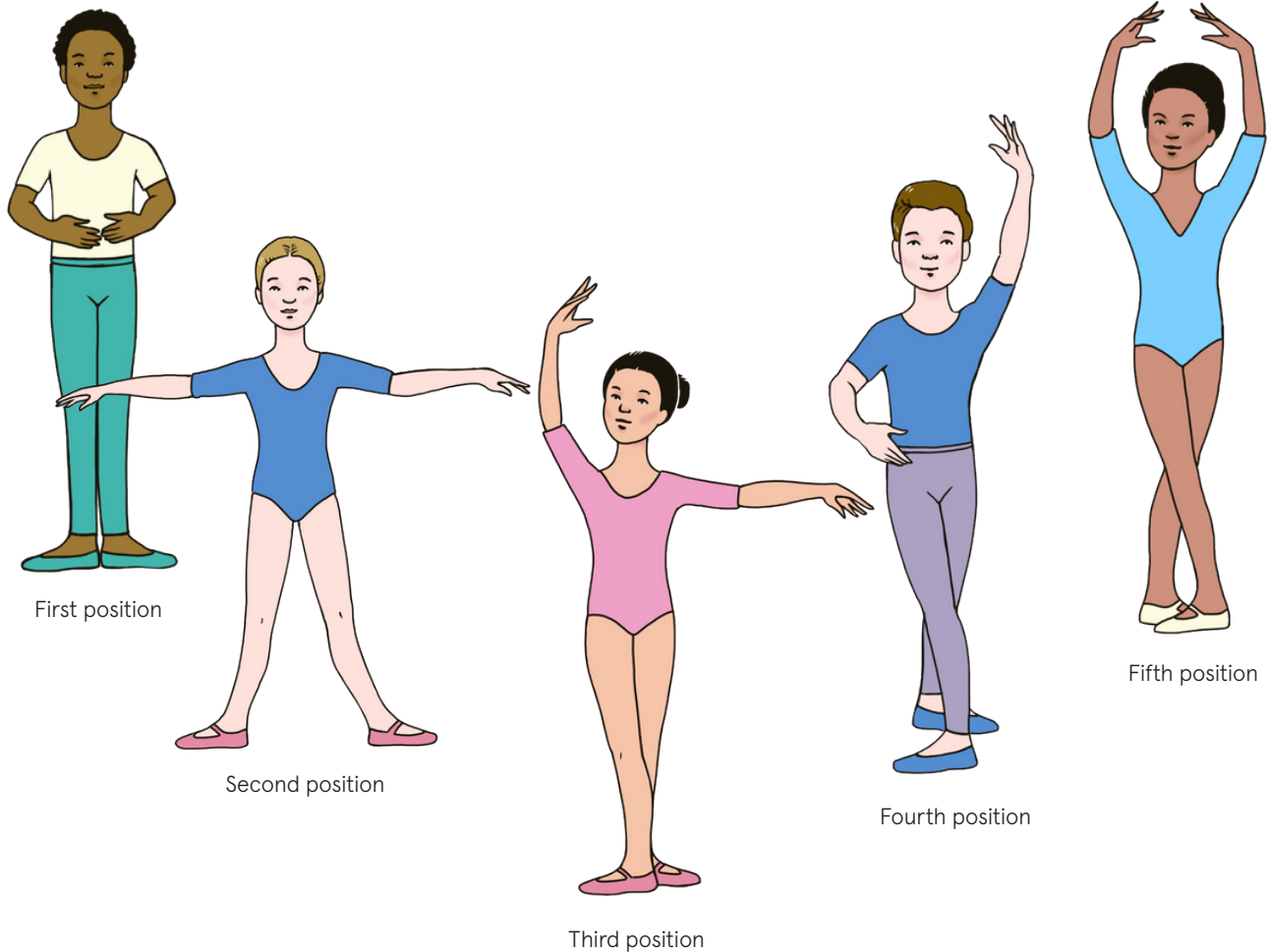


Bonus Activity: Find the hidden pictures within the maze.



# Basic Ballet Foot Positions

Classical ballet is a centuries-old art form that relies on highly stylized and graceful movements. Below are the five basic ballet positions for feet.

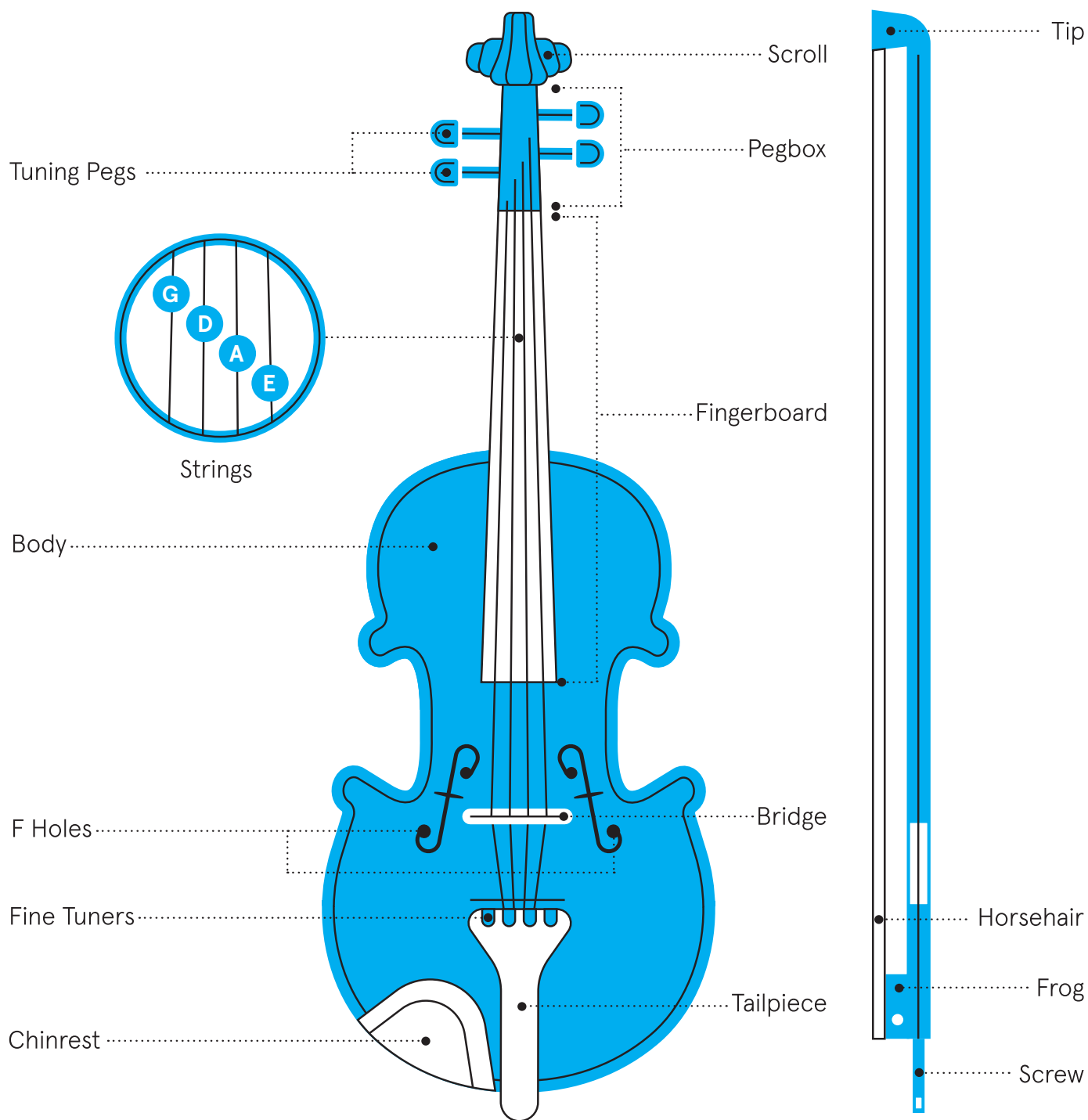


## The 5 Foot Positions in Ballet

1. **First position.** The heels are kept together, and the feet are turned outward in a straight line.
2. **Second position.** A distance of one foot separates the feet, which are turned outward in a straight line.
3. **Third position.** The feet are turned outward, and the heels are placed together, one in front of the other.
4. **Fourth position.** A distance of one foot separates the feet, and they are turned outward with one foot in front of the other, parallel to each other so that if you drew a line from the heel of one foot to the toe of the other, they would form the sides of a square.
5. **Fifth position.** The feet are turned outward, one foot is placed directly in front of the other, and the first joint of the big toe extends past each heel.

# Anatomy of a Violin

Odette and Prince Siegfried fall in love in the story of *Swan Lake*. The romance in this story is highlighted by a solo violin singing during Act Two's Dance of the Swans V. *Pas d'action (Odette et le Prince)*, in which Odette and the Prince finally meet at the lake.



# Los Angeles Philharmonic Orchestra

Gustavo Dudamel  
*Music & Artistic  
Director*  
Walt and Lilly  
Disney Chair

Zubin Mehta  
*Conductor Emeritus*

Esa-Pekka Salonen  
*Conductor Laureate*

Rodolfo Barráez  
*Assistant Conductor*  
Ann Ronus Chair

John Adams  
John and  
Samantha Williams  
Creative Chair

Herbie Hancock  
Creative Chair for Jazz

## FIRST VIOLINS

Martin Chalifour  
*Principal*  
Concertmaster  
Marjorie Connell  
Wilson Chair

Nathan Cole  
*First Associate  
Concertmaster*  
Ernest Fleischmann  
Chair

Bing Wang  
*Associate  
Concertmaster*  
Barbara and Jay  
Rasulo Chair

Akiko Tarumoto  
*Assistant  
Concertmaster*  
Philharmonic  
Affiliates Chair

Rebecca Reale  
*Deanie and Jay  
Stein Chair*

Rochelle Abramson  
Camille Avellano  
Margaret and Jerrold  
L. Eberhardt Chair

Minyoung Chang  
I.H. Albert  
Sutnick Chair  
Tianyun Jia  
Jordan Koransky  
Ashley Park  
Stacy Wetzel  
Justin Woo

## SECOND VIOLINS

Lyndon Johnston  
Taylor  
*Principal*  
Dorothy Rossel  
Lay Chair

Mark Kashper  
*Associate Principal*

Kristine Whitson  
Johnny Lee

Dale Breidenthal  
*Mark Houston Dalzell  
and James Dao-  
Dalzell Chair for  
Artistic Service to  
the Community*

Ingrid Chun  
Jin-Shan Dai  
Chao-Hua Jin  
Jung Eun Kang  
Nickolai Kurganov  
Varty Manouelian  
Michelle Tseng  
Suli Xue  
Ayrton Pisco\*  
Nebyu Samuel\*

## VIOLAS

Teng Li  
*Principal*  
John Connell Chair

Ben Ullery  
*Associate Principal*

Jenni Seo  
Dana Lawson

Richard Elegino  
John Hayhurst  
Ingrid Hutman  
Michael Larco  
Hui Liu  
Meredith Snow  
Leticia Oaks Strong  
Minor L. Wetzel  
Jarrett Threadgill\*  
Nancy and Leslie  
Abell LA Phil Resident  
Fellow Chair

## CELLOS

Robert deMaine  
*Principal*  
Bram and Elaine  
Goldsmith Chair

Ben Hong  
*Associate Principal*  
Sadie and Norman  
Lee Chair

Dahae Kim  
*Assistant Principal*  
Jonathan Karoly

David Garrett  
Barry Gold  
Jason Lippmann  
Gloria Lum  
Linda and Maynard  
Brittan Chair  
Serge Oskotsky  
Brent Samuel\*  
Ismael Guerrero\*

## BASSES

Christopher Hanulik  
*Principal*  
Diane Disney Miller  
and Ron Miller Chair

Kaelan Decman  
*Associate Principal*

Oscar M. Meza  
*Assistant Principal*

David Allen Moore

Ted Botsford  
Jack Cousin  
Jory Herman  
Brian Johnson  
Peter Rofé  
Nicholas Arredondo\*

## FLUTES

Denis Bouriakov  
*Principal*  
Virginia and Henry  
Mancini Chair

Catherine  
Ransom Karoly  
*Associate Principal*  
Mr. and Mrs. H.  
Russell Smith Chair

Elise Shope Henry  
*Mari L. Danihel Chair*  
Sarah Jackson

## Piccolo

Sarah Jackson

## OBOES

Marc Lachat  
*Principal*  
Carol Colburn  
Grigor Chair

Marion Arthur Kuszyk  
*Associate Principal*

Anne Marie Gabriele  
Carolyn Hove

## English Horn

Carolyn Hove

## CLARINETS

Boris Allakhverdyan  
*Principal*  
Michele and Dudley  
Rauch Chair

Burt Hara  
*Associate Principal*

Andrew Lowy  
Taylor Eiffert

## E-Flat Clarinet

Andrew Lowy

## Bass Clarinet

Taylor Eiffert

## BASSOONS

Whitney Crockett  
*Principal*

Shawn Mouser  
*Associate Principal*  
Ann Ronus Chair  
Michele Grego\*  
Evan Kuhlmann

## Contrabassoon

Evan Kuhlmann

## HORNS

Andrew Bain  
*Principal*  
John Cecil Bessell Chair

David Cooper  
*Associate Principal*

Gregory Roosa  
*Alan Scott Klee Chair*

Amy Jo Rhine  
*Loring Charitable  
Trust Chair*

Elyse Lauzon  
*Reese and Doris  
Gothie Chair*

Ethan Bearman  
*Assistant*  
Bud and Barbara  
Hellman Chair

Elizabeth Linares  
Montero\*

## TRUMPETS

Thomas Hooten  
*Principal*  
M. David and Diane  
Paul Chair

James Wilt  
*Associate Principal*  
Nancy and Donald  
de Brier Chair

Christopher Still  
*Ronald and Valerie  
Sugar Chair*

Jeffrey Strong

## TROMBONES

David Rejano  
Cantero  
*Principal*  
Koni and Geoff Rich  
Chair

James Miller  
*Associate Principal*  
Judith and Thomas  
L. Beckmen Chair  
Paul Radke

## Bass Trombone

John Lofton  
*Miller and Goff  
Family Chair*

## TUBA

Mason Soria

## TIMPANI

Joseph Pereira  
*Principal*  
Cecilia and Dudley  
Rauch Chair

David Riccobono  
*Assistant Principal*

## PERCUSSION

Matthew Howard  
*Principal*

James Babor  
Perry Dreiman  
David Riccobono

## KEYBOARDS

Joanne Pearce Martin  
*Katharine Bixby  
Hotchkis Chair*

## HARP

Emmanuel Ceysson  
*Principal*  
Ann Ronus Chair

## LIBRARIANS

Stephen Biagini  
Benjamin Picard  
KT Somero

## CONDUCTING FELLOWS

Carlos Ágreda  
Ross Jamie Collins  
Michelle Di Russo  
Anna Handler

\* Judith and Thomas  
L. Beckmen  
LA Phil Resident  
Fellow

\* On sabbatical

The Los Angeles  
Philharmonic string  
section utilizes  
revolving seating on  
a systematic basis.  
Players listed  
alphabetically change  
seats periodically.

The musicians of  
the Los Angeles  
Philharmonic are  
represented by  
Professional  
Musicians Local 47,  
AFM.



# HOLLYWOOD BOWL

2024

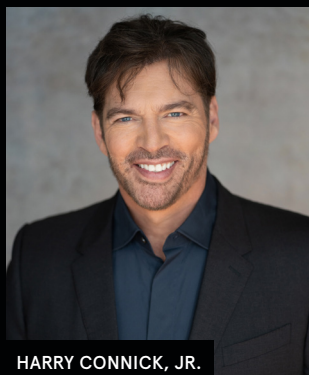
## Forever Summer



GUSTAVO DUDAMEL



NATALIA LAFOURCADE



HARRY CONNICK, JR.



CHAKA KHAN



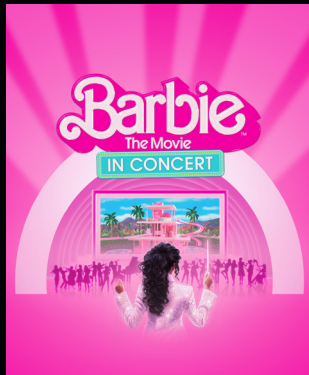
MICHAEL BUBLÉ



LAUFEY



T-PAIN



Barbie  
The Movie  
IN CONCERT



INDIA.ARIE



PATTI LABELLE



MITSKI



GARY CLARK JR.



MIDORI



BOYZ II MEN

CHOOSE 3 OR MORE CONCERTS & SAVE!

SEE WEBSITE FOR DETAILS.

[hollywoodbowl.com/cyo](http://hollywoodbowl.com/cyo) | 323 850 2000

Groups (10+) | Parking, shuttle, and venue policies  
323 850 2050 | at [hollywoodbowl.com/gettinghere](http://hollywoodbowl.com/gettinghere)

Programs, artists, prices, and dates subject to change.



The Hollywood Bowl is a public park owned by the County of Los Angeles Department of Parks and Recreation.

# LA Phil

GUSTAVO DUDAMEL  
MUSIC & ARTISTIC DIRECTOR