



INFO SHEET

EUROPEAN OAK 'ETERNAL GREY'



INFO SHEET

EUROPEAN OAK 'ETERNAL GREY'

1 GENERAL PRODUCT INFORMATION

SURFACE TEXTURE medium brushed

FINISH TYPE surface smoked, stained, oiled & hardwaxed ultra mat

COLOUR INFO* colour variation:

very even colour	light colour variation	medium colour variation	strong colour variation
			✓

Please note that wood grades with more characteristics (such as knots, cracks, heart line) show more colour variation.

colour behavior: surface smoked floors tend to lighten up to 25-30% over the first 6 months after installation due to the influence of UV-light.

**Although we strive to portray wood structure and colour as realistically as possible in all our samples and images, a single sample or any image can never act as a representation of an entire floor: no rights can be derived. Wood is natural material: variation in grain and colour occurs. Floors may also change over time due to the influence (or lack) of UV light, wear & tear, and maintenance.*

CONSTRUCTION

16 → 4 mm oak + 12 mm birch plywood
 21 → 6 mm oak + 15 mm birch plywood
 24 → 6 mm oak + 18 mm birch plywood

AVAILABILITY
PREMIUM MULTIPLANK

minimum 80% > 1800 mm	R&Q*	SELECT	NATURAL	CHARACTER
16 x 100 x 1000-2400 mm	✓	✓	✓	
16 x 140 x 1000-2400 mm	✓	✓	✓	✓
16 x 180 x 1000-2400 mm	✓	✓	✓	✓
16 x 220 x 1000-2400 mm	✓	✓	✓	✓
21 x 100 x 1000-2400 mm	✓	✓	✓	
21 x 140 x 1000-2400 mm	✓	✓	✓	✓
21 x 180 x 1000-2400 mm	✓	✓	✓	✓
21 x 220 x 1000-2400 mm	✓	✓	✓	✓
21 x 260 x 1000-2400 mm		✓	✓	✓
21 x 300 x 1000-3000 mm		✓	✓	✓

* Rift & Quarter sawn (vertical grain only)

AVAILABILITY
PREMIUM MULTIPLANK
XXL

minimum 80% > 3800 mm	SELECT/NATURAL	CHARACTER
21 x 260 x 2600-5000 mm	✓	✓
21 x 300 x 2600-5000 mm	✓	✓
24 x 380 x 2600-5000 mm	✓	✓

GRADES



Rift & Quarter (R&Q)



Select



Natural



Character

100 – 220 mm

Rift & Quarter sawn

sound pin knots up to 1 cm, straight grain only, light colour changes, mirror flakes occur.

Select

sound pin knots up to 1 cm, very light colour changes.

Natural

sound knots max. 3 cm, knotholes max. 1.5 cm, light colour changes.

Character

sound knots without restrictions, knotholes max. 4 cm, heartwood, occasional cracks with a length up to the width of the board, bark pockets up to 10 cm, medium colour variation.

260 – 380 mm

Select

sound pin knots up to 1.5 cm, very light colour changes.

Natural

sound knots max. 4 cm, knotholes max. 2 cm, light colour changes.

Character

sound knots without restrictions, knotholes max. 4 cm, heartwood, occasional cracks with a length up to the width of the board, bark pockets up to 10 cm, medium colour variation.

BEVELS

micro bevels on the long sides only

OPTIONS

long lengths only

fixed lengths

customized bevels

hardwaxed satin mat

Varnax – innovative, mat anti-scratch hybrid coating

misc. patterns (see next page)

complementary products (cladding for walls and ceiling, stair elements, window sills, etc)

2 PATTERNS

MIXED WIDTH

choose 2, 3 or even 4 widths and install these in a repeated system

RANDOM WIDTH

choose 2, 3 or even 4 widths and install these in a random pattern

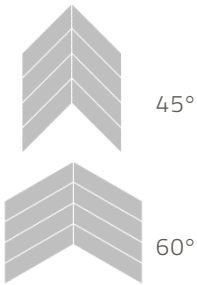
HERRINGBONE



	R&Q	SELECT	NATURAL	CHARACTER
16 x 70 x 350 mm	✓	✓	✓	
16 x 100 x 500 / 700 mm	✓	✓	✓	
16 x 140 x 700 mm	✓	✓	✓	✓
16 x 180 x 900 mm	✓	✓	✓	✓
16 x 220 x 1100 mm	✓	✓	✓	✓
21 x 70 x 350 mm	✓	✓	✓	
21 x 100 x 500 mm	✓	✓	✓	
21 x 140 x 700 mm	✓	✓	✓	✓
21 x 180 x 900 mm	✓	✓	✓	✓
21 x 220 x 1100 mm	✓	✓	✓	✓
21 x 260 x 780 mm		✓	✓	✓
21 x 300 x 900 mm		✓	✓	✓
19 x 380 x 1140 mm		✓	✓	✓

other dimensions on request

CHEVRON

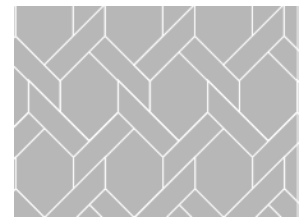


45° / 60°	R&Q	SELECT	NATURAL	CHARACTER
16 x 100 x 600 / 640 mm	✓	✓	✓	
16 x 140 x 560 / 610 mm	✓	✓	✓	✓
16 x 180 x 720 / 780 mm	✓	✓	✓	✓
21 x 140 x 560 / 610 mm	✓	✓	✓	✓
21 x 180 x 720 / 780 mm	✓	✓	✓	✓

other dimensions on request

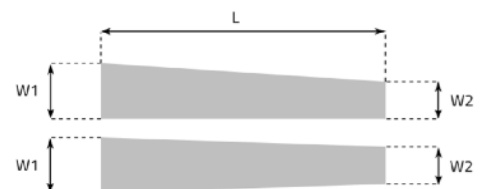
MANSION WEAVE

WIDTH
180
220
260
300



(SEMI) TRAPEZIUM

WIDTH 1	WIDTH 2	LENGTH
140	95	700
180	120	900
220	150	1100
260	180	1200
300	210	1500
380	260	2000



CUBE

WIDTH
440
520
600
760



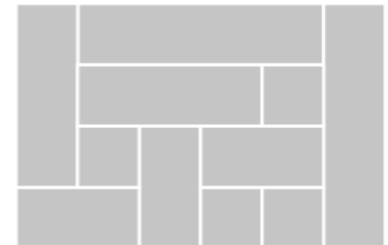
QUADRO

WIDTH
180
220
260
300
380



CREATIVE

WIDTH	LENGTHS
220	220 440 660 880
300	300 600 900 1200



3 SOCIAL AND ENVIRONMENTAL RESPONSIBILITIES

WOODlife's owners genuinely believe their employer's responsibility goes beyond just being good for your employees. Therefore, their production facility is granted an accredited social status, meaning that at least 50% of the employees has a certain degree of incapacity for work due to invalidity, disablement, deafness, personality disorders, and so on.

The European oak used is harvested from controlled European forests throughout Germany, the Baltic's and the Ukraine, largely from FSC®- certified forests. Our certificate can be downloaded from our website.



Our products are finished using low-emission natural oils, hardwax oils and water-based lacquers produced by Saicos Colour, Germany.



WOODlife's multiplanks have an Excellent rating according to BREAAAM. The approval implies that the products have passed tests for all major European regulations on the presence of VOC's and Formaldehyde in wooden flooring. Our flooring does not contain any solvents, isocyanides, formaldehyde, Creosote, Arsenic or Chrome.



We do not waste any wood. Leftovers are used to produce skirting and home decorations. The remainder, as well as all our saw dust, is used as fuel wood to heat the entire factory including drying kilns. This reduces our carbon footprint substantially.

4 INSTALLATION & MAINTENANCE

INSTALLATION

- We recommend taking app 7-8% saw waste for regular flooring and 12-14% for pattern flooring into account when calculating the amount needed.
- Storage in the room at least 48 hours before installation. Packs are to be kept closed.
- During installation, humidity should be between 35% and 70%, temperature between 18 ° to 24 ° Celsius.
- Installation method: glue down or screw down is recommended, floating installation is possible in most cases.
- Always take local installation standards into account.
- Boards up to max 300 mm wide are suitable for under floor heating.
- All oiled WOODlife floors are finished with natural oils and waxes and have been fully cured at the factory. Unlike oxidative oiled floors, our floors are fully hardened upon arrival and can therefore be used in any space, without any restrictions.

Also see the following documentation:

WOODlife Flooring – installation guidelines.

WOODlife Flooring – underfloor heating.

CARE & MAINTENANCE

- After installation, relative humidity levels in the rooms should always be kept between 30% and 70%.
- Please be aware to place humidifiers/vaporizers during the wintertime if needed.
- Ventilate the spaces on a regular basis.
- Our floors require regular maintenance; frequency strongly depends on type of use. A rough guideline:

Daily cleaning:

Periodic cleaning:

Maintenance at regular use:

Maintenance at intensive & commercial use:

Dry cleaning

Saicos Wash Care (parquet friendly soap for mopping)

Saicos Wax Care (maintenance oil), 1 or 2 times per year

Saicos Wax Care (maintenance oil), 3 or 4 times per year

Also see the following documentation:

WOODlife Flooring – maintenance guide.

Copyright © 2021 by WOODlife Flooring BV.

All rights reserved.