

Museum of Art



San Antonio
Museum
of Art

2017–2018
Annual Report



Table of Contents

Message from the Director	3
The Year in Numbers	4
Exhibitions	6
Learning & Interpreting	19
Collecting	22
Volunteering & Staffing	41
Supporting & Giving	46
Financials	51

Visitors in the Contemporary Gallery. Helen Frankenthaler, American, 1928–2011, *Eden Revisited*, 1967–1976, Acrylic on canvas, h. 130 in. (330.2 cm); w. 39 ½ in. (100.3 cm), Purchased with funds from the National Endowment for the Arts, The Brown Foundation, and the Sarah Campbell Blaffer Foundation, 77.33.9.

Photo credits: Kevin Barton, Daniel Holman Studios, Elizabeth Leland, Paola Longoria, Parish Photography, Daniela Riojas, Peggy Tenison

Message from the Director



Kelso Director Katie Luber with Mayor Ron Nirenberg and Board Chair Marie Halff

This year the Museum seized the opportunity to honor San Antonio's 300th anniversary and raise its own profile on the world stage. Two major exhibitions—*San Antonio 1718: Art from Viceroyal Mexico* and *Spain: 500 Years of Painting from the Museums of Madrid*—played a seminal role in the city's Tricentennial celebrations and gave important context to the anniversary.

The visit from the King and Queen of Spain for the opening of *Spain* was a high point of the year. The exhibition received international coverage and positive reviews in publications such as *The Wall Street Journal*, *The New York Times*, and *The Los Angeles Times*. At 863 million, *Spain's* total media reach surpassed any we had seen before.

Our goal is to increase awareness, attendance, and support of the Museum in order to enrich lives through exceptional experiences with art. We welcomed 132,000 visitors and more than 1,000 new members. 18,000 students discovered the rich diversity of art and culture that our Museum offers—for free.

By every measure, it was a great year. We added 250 works to our collection. The National Endowment for the Humanities awarded the Museum a \$315,000 grant to digitize and share thousands of works of art online. We launched a new website and logo and opened our new restaurant, Tre Trattoria, to great reviews by members, the public, and the press. At the same time, the Museum contributed almost \$11 million to the local economy.*

SAMA only fulfills its potential with the support of our dedicated Board of Trustees and each of our members, donors, and partners. We thank the many individuals, organizations, foundations, and corporations who contribute so much to the growth and success of the San Antonio Museum of Art.

It is an exciting time at the Museum as we look to the future. There will be more to celebrate in the years ahead: the tenth anniversary of the Museum Reach in 2019, and the fortieth anniversary of the Museum in 2021.

Katherine C. Luber, PhD
The Kelso Director

*Americans for the Arts Prosperity 5 Calculator

The Year in Numbers



@ Casa de S.M. el Rey

131,968

Visitors

16,590

Visitors on Free Sundays

21,321

Visitors on H-E-B Free Tuesdays

9

Special Exhibitions

618

Public Programs

250

Works Added to Our Collection

1,056

New Members Added

1

Royal Visit from the
King and Queen of Spain



18,114

School, College and University
Tour Attendees

488

Teachers Earning Continuing
Professional Education Credits



43,472

Facebook Followers

15,018

Twitter Followers

16,509

Instagram Followers

1,628

Media Mentions, with Stories in:
The New York Times
The Wall Street Journal
The Los Angeles Times
The Art Newspaper
American Way Magazine

1

New Restaurant, Tre Trattoria





Exhibitions



The vision and scholarship of our curators drive the Museum's ambitious exhibition schedule. The full Museum community—every person on staff, our members, donors, volunteers, and visitors—contributes to make exhibitions a success. The San Antonio Museum of Art mounted nine special exhibitions and toured two original exhibitions in the fiscal year.

Intercambios: Modernist Photography in Mexico from the Permanent Collection

August 11–December 31, 2017

Golden Gallery

Organizing Curators: Lana Shaefer Meador and Erin Murphy

Post-Revolutionary Mexico's period of burgeoning change cultivated artistic innovations and drew international artists and intellectuals to the country facilitating a rich artistic exchange between Mexico and the United States. The 1923 arrival of Tina Modotti (Italian, 1896–1942) and Edward Weston (American, 1886–1958) in Mexico City signaled a turning point in the practice of photography. While nineteenth-century photography was treated as historical document or commercial product rather than fine art, Weston and Modotti brought an approach to the medium that made clarity of form and the artist's unique vision the priority, establishing the medium as an agent for Modernism. *Intercambios* was drawn from the Museum's permanent collection and included works by Manuel Álvarez Bravo, Manuel Carrillo, Tina Modotti, Paul Strand, and Edward Weston.

Tina Modotti (Italian, 1896–1942),

Anita with Head Right, 1925

Gelatin silver print, 3 $\frac{7}{8}$ x 2 $\frac{7}{8}$ in.

Gift of Peter Glusker, MD, in Memory of His

Mother, Anita Brenner, 2003.18.15

Photography by Peggy Tenison



Antinous, the Emperor's Beloved: Investigating a Roman Portrait

September 1–November 26, 2017

4th Floor Special Exhibitions Gallery

Organizing Curator: Jessica Powers, PhD

The first exhibition of its kind for the Museum, *Antinous, the Emperor's Beloved: Investigating a Roman Portrait* focused on the close examination of a single work in the collection. This exhibition shared both behind-the-scenes scientific research and the story of Antinous, the young lover of Roman Emperor Hadrian. *Antinous, the Emperor's Beloved* drew on a thorough study of the Museum's portrait head to better understand its original appearance. The study revealed that the Antinous's ivy wreath preserved traces of ancient gilding. Microscopic imaging revealed that purple stains on the wreath were actually caused by the chemical deterioration of the gilding, and the exhibition featured images from this analysis.

"The phenomenon has been recorded on only a very few Roman statues," said Jessica Powers, PhD, The Gilbert M. Denman Jr. Curator of Art of the Ancient Mediterranean World, "and its documentation on the Museum's Antinous marks an important contribution to the understanding of gilding and polychromy on Roman sculptures." The exhibition featured several other works, including ancient sculptures and coins on loan from the J. Paul Getty Museum, the American Numismatic Society, and the University of Pennsylvania Museum of Archaeology.

Antinous, the Emperor's Beloved was made possible by generous support from the bequest of Gilbert M. Denman Jr.; the family of Myriam McGinnis, in her memory; Louis J. Lamm Jr.; the Alice Kleberg Reynolds Foundation; and the Friends of Ancient Art.

Portrait of Antinous as Dionysos

Roman, AD 130–138

Marble, h. 15 in.

San Antonio Museum of Art, Gift of Gilbert M. Denman Jr.

86.134.164

Photo: Peggy Tenison



The Latino List: Photographs by Timothy Greenfield-Sanders

October 6–December 31, 2017

Cowden Gallery

Organizing Curator: William Keyse Rudolph, PhD

Beginning in 2010, contemporary American portrait photographer Timothy Greenfield-Sanders (born 1952) launched a portrait and documentary series investigating the vibrant culture of Hispanic America. Eventually numbering thirty-one portraits, *The Latino List* presented a gallery of influential Latinos, both native-born and naturalized citizens, who have made indelible contributions to American society. The photographs were complemented by two documentaries containing first-person interviews with the sitters, produced for HBO in collaboration with journalist Maria Hinojosa (American, born Mexico, 1961).

All the photographs in *The Latino List* were the promised gift of Hiram Butler and Andrew Spindler-Roesle to the Museum in honor of Museum Trustee Banks R. Smith.

The Latino List was generously funded by Entravision, Henry and Kyle Ferari Muñoz, and *The Latino List* Host Committee. Free admission to the exhibition was generously underwritten by USAA.



Martine Syms (American, born 1988)
Laughing Gas (full installation includes
SHE MAD: Laughing Gas, *Bertha Cut-out*,
and IS YOU IS OR IS YOU AIN'T), 2016
 4-channel video installation, wall painting,
 laser-cut acrylic, artist's clothes
SHE MAD: Laughing Gas: 6:59 minute loop,
IS YOU IS OR IS YOU AIN'T: h. 63 ½ in.,
 w. 168 ½ in.,
Bertha Cut-out: h. 96 in.; w. 48 in.
 San Antonio Museum of Art, Purchased
 with The Brown Foundation Contemporary
 Art Acquisition Fund, 2018.2

Photo: Brian Forrest, Hammer Museum,
 Los Angeles

Martine Syms: *Laughing Gas*—Full Installation

January 28—December 30, 2018

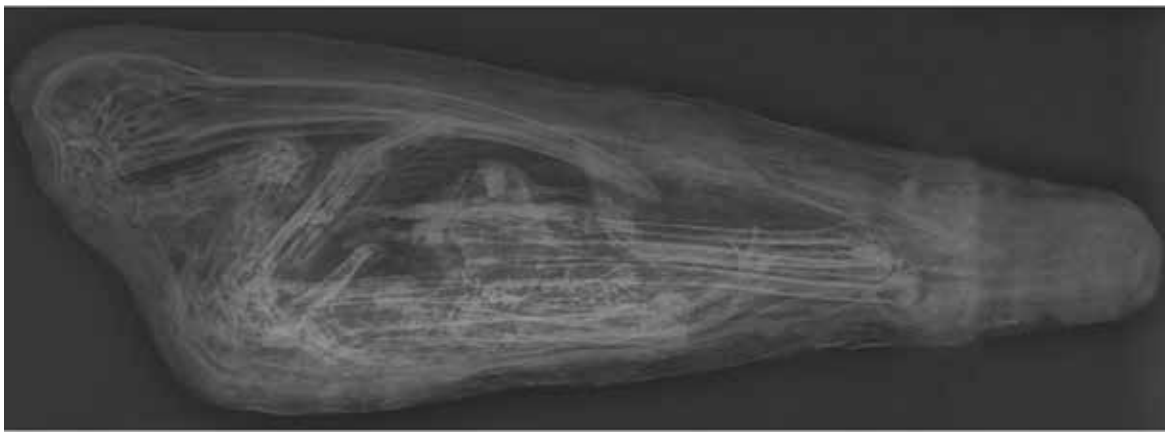
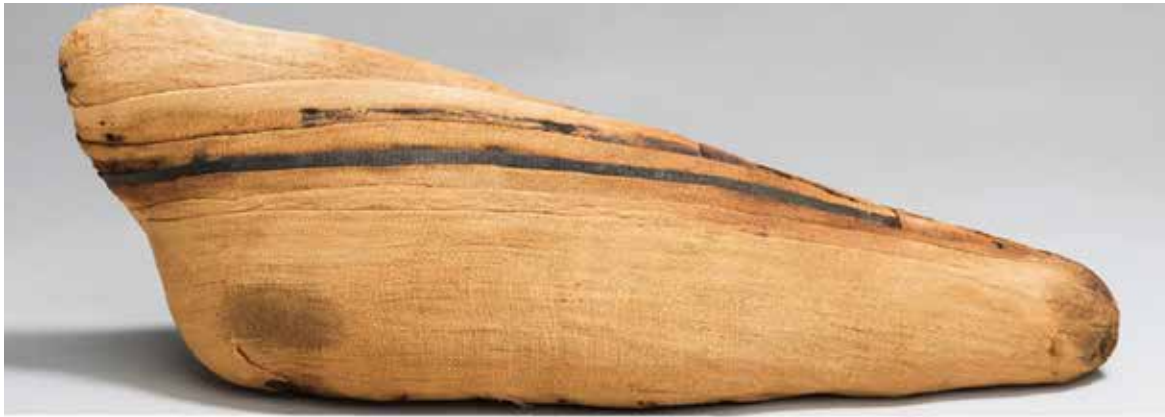
Contemporary Gallery II

Organizing Curator: Suzanne Weaver

Purchased by the Museum with The Brown Foundation Contemporary Art Acquisition Fund, *Laughing Gas* is a unique installation that includes an immersive four-channel video (*SHE MAD: Laughing Gas*), painted wall text (*IS YOU IS OR IS YOU AIN'T*), and a laser-cut acrylic wall piece with artist's clothes (*Bertha Cut-out*). *Laughing Gas* is the pilot episode of a situation comedy titled *SHE MAD*, a television series that Syms initiated in 2015 as a semiautobiographical account of a young black woman trying to “make it” as an artist in Los Angeles. Syms uses Edwin Porter’s 1907 silent film of the same title as a starting point.

Her protagonist is inspired by Bertha Regustus, the African-American actor in Porter’s film whose character’s infectious laughter, triggered by a dentist’s administration of nitrous oxide, affects everyone she encounters. Following that premise, Syms cast herself in the role of “Martine” in a series of largely improvised scenes.

After being given nitrous oxide at the dentist’s office for a tooth extraction, she is told her insurance won’t cover the surgery and she must pay or leave. Like Bertha, Syms ends up walking alone in public, often laughing and confused. Throughout the looped video are references to visual styles that reflect the evolution of cinema into recent forms such as television, the internet, and surveillance and body cam footage. With *Laughing Gas*, Syms continues her explorations of the film industry 10 as subject and producer of values, ideas, and ideology.



Ibis Mummy
 Egyptian (Late Period–Roman Period), ca.712 BC–AD 395.
 Ibis remains and linen, h. 4 1/2 in. (11.4 cm); l. 15 1/2 in. (39.4 cm)
 Bequest of Gilbert M. Denman Jr., 2005.1.36
 Photography by Peggy Tenison

X-ray of *Ibis Mummy*, 2005.1.36
 Image by Radiology Department, University of Texas Health San Antonio

Egyptian Animal Mummies: Science Explores an Ancient Religion

March 23–July 1, 2018

4th Floor Special Exhibitions Gallery

Organizing Curator: Sarah Schellinger, PhD

Egyptian Animal Mummies: Science Explores an Ancient Religion presented the Museum's collection of animal mummies from ancient Egypt. A selection of bronze reliquaries, which would have been dedicated to a deity and may have contained an animal mummy, were shown alongside the animal mummies. Recently conserved for this exhibition, the mummies included a cat, three crocodiles, two ibises, and three falcons. The exhibition focused on the creation of the mummies, their role in ancient Egyptian religion, and their burial.

In collaboration with the San Antonio Zoo and the Radiology Department at University of Texas Health San Antonio, the mummies underwent scientific examination including X-ray imaging and CT scanning, which made it possible to understand and analyze their contents without unwrapping them. These tests and their results were featured in the exhibition.

This exhibition was made possible by generous support from The Andrew W. Mellon Foundation, the American Research Center in Egypt, the Sarah E. Harte and John S. Gutzler Fund of the San Antonio Area Foundation, Sendero Wealth Management, the Herrmann Family Charitable Foundation, Martha Avant, Thomas Edson, Chave Gonzaba, Barbara and Michael Gentry, Cecilia and Frank Herrera, Karen Hixon, Chris Karcher and Karen Keach, Rosario Laird, Kim Lewis, Dana McGinnis, Toby O'Connor, Roxana Richardson, Mr. and Ms. William Scanlan Jr., and Sidney Swearingen.



Artist unknown, New Spain,
The Hernándezes Honoring their Devotion to Saint Michael the Archangel
 (Matrimonio Hernández a devoción de San Miguel Arcángel), 1818
 Oil on canvas, h. 36 in. (91 cm); w. 29 in. (73.5 cm)
 Colección Museo Soumaya. Fundación Carlos Slim. Mexico City

San Antonio 1718: Art from Viceregal Mexico

February 17–May 13, 2018

Cowden Gallery and Golden Gallery

Organizing Curator: Marion Oettinger Jr., PhD

The Tricentennial exhibition *San Antonio 1718: Art from Viceregal Mexico* told the story of the city's first century through more than one hundred landscapes, portraits, narrative paintings, sculptures, and devotional and decorative objects, many of them never before exhibited in the United States. Celebrating the city's deep Hispanic roots and cultural ties with Mexico, the exhibition featured works by New Spain's most talented eighteenth-century artists—Cristóbal de Villalpando (1649–1714), Miguel Cabrera (1695–1768), and José de Páez (1720–1790)—as well as pieces by unknown vernacular artists. *San Antonio 1718* included portraits of political and economic power, Spanish viceroys and military leaders who helped shape the destiny of the city. It explored the intrepid Franciscan missionaries who spearheaded the evangelization of the region and the religious figures who anchored their teachings such as the Virgin of the Immaculate Conception and her American manifestation, the Virgin of Guadalupe.

Many works were more personal: portraits of poised young women whose marriages will solidify status, aspirational paintings of young families at home, nuns depicted at the threshold of their vows or at their death, post-mortem portraits of infants. Throughout, the works invoked the lineage and authority of mainland Spain, while revealing the lives and times of San Antonio's earliest inhabitants. The exhibition was accompanied by a fully illustrated scholarly catalogue.

San Antonio 1718 was presented in collaboration with Mexico's Instituto Nacional de Antropología e Historia (INAH) and was generously funded by Bexar County, William and Salomé Scanlan Foundation, Patsy Steves, the Robert J. Kleberg, Jr. and Helen C. Kleberg Foundation, NuStar Energy, The Greehey Family Foundation, and Myfe White Moore. Support for the *San Antonio 1718* catalogue was provided by the Russell Hill Rogers Fund for the Arts.





Spain: 500 Years of Spanish Painting from the Museums of Madrid

June 22–September 16, 2018

Cowden Gallery

Organizing Curators: Katherine Crawford Luber, PhD, and William Keyse Rudolph, PhD

El Greco. Velázquez. Goya. Sorolla. Picasso... These are just some of the Spanish masters whose paintings were included in *Spain: 500 Years of Spanish Painting from the Museums of Madrid*. This Tricentennial exhibition featured works from Madrid's most important museums—including the Prado, the Reina Sofía, and the Thyssen-Bornemisza—complemented by a select group of works from American museums. The exhibition was only seen in San Antonio, and many of the works had never been on view in the United States.

"By bringing together paintings from different collections and periods, Spain offers a dynamic narrative," said Chief Curator William Keyse Rudolph, PhD, the exhibition's co-curator. "From devotional works that demonstrate the dominance of the Catholic Church at the end of the Middle ages to cosmopolitan paintings from the dawn of the twentieth century, visitors will see the beauty of Spanish painting and its legacy."

Spain was organized by the San Antonio Museum of Art and undertaken with the support of the Spanish Embassy in Washington, DC, and the Ministry of Education, Culture and Sport in Madrid. This exhibition was made possible by Bank of America. It was generously funded by Carlos and Malú Alvarez, American Airlines Cargo, The Brown Foundation, the Elizabeth Huth Coates Foundation of 1992, the Betty Stieren Kelso Foundation, and Christie's Appraisals, Inc. and supported by an indemnity from the Federal Council of the Arts and the Humanities.

Francisco de Zurbarán (1598–1664)

Saint Isabel of Portugal, ca. 1635

Oil on canvas, h. 72 7/16 in. (184 cm); w. 38 9/16 in. (98 cm)

Museo Nacional del Prado, Madrid P01239

© Museo Nacional del Prado, Madrid





Harry Bertoia: Sculptor and Modernist Designer

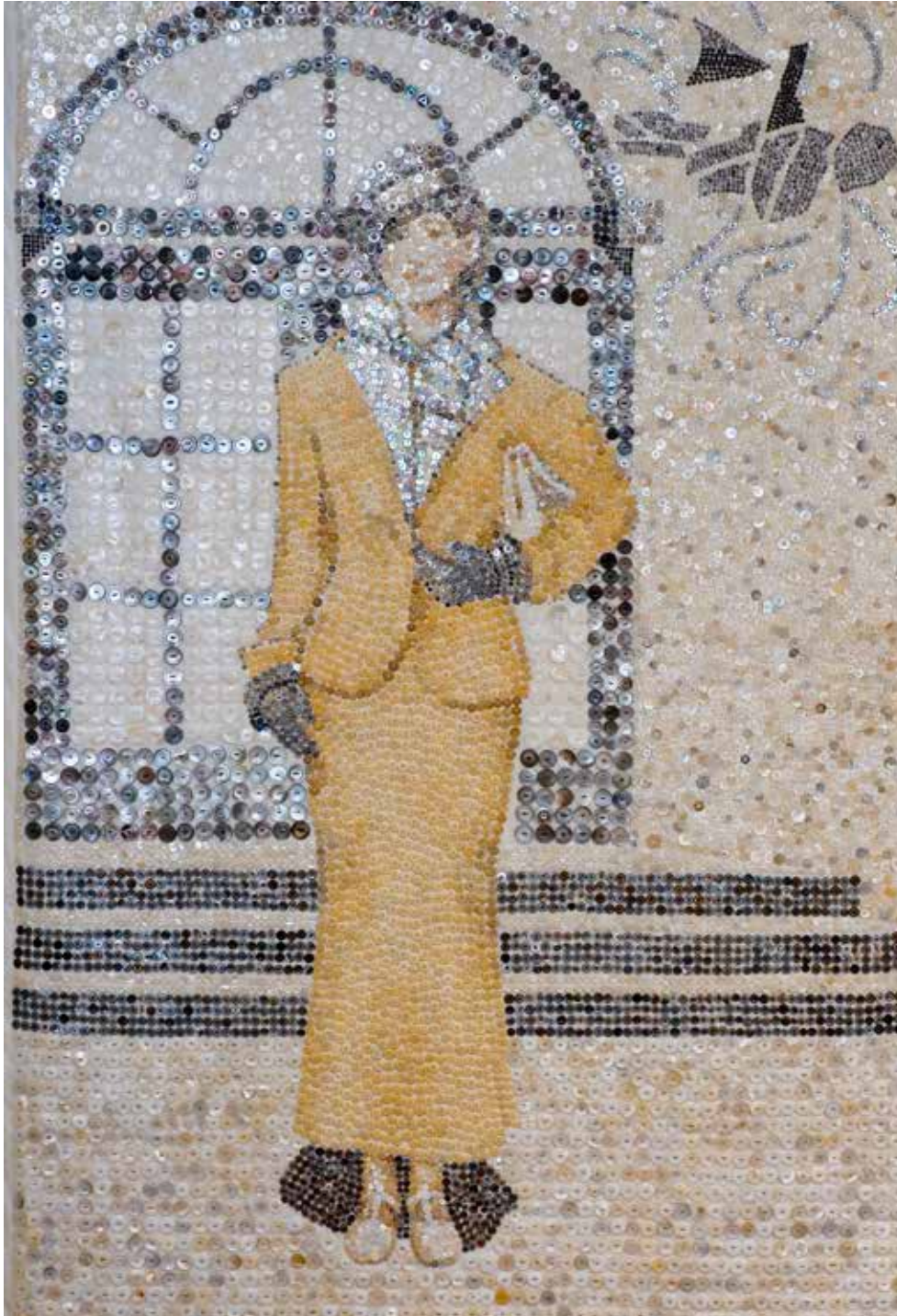
September 14–March 2019

Golden Gallery

Organizing Curator: Emily J. Sano, PhD

The Italian-born American artist Harry Bertoia (1915–1978) produced iconic modern furniture with Charles and Ray Eames and for Knoll, Inc. He also created outstanding prints, jewelry, and monumental architectural sculpture.

In 2004–5, local collectors Robert and Laura Cadwallader gave the San Antonio Museum of Art a Bertoia sculpture composed of bundled rods; a wire-grid child's chair characteristic of his popular Knoll chairs; and a "Sonambient" sculpture that emits sounds when struck. This exhibition featured these works for the first time, accompanied by several pieces on loan that chronicle the breadth of Bertoia's artistic vision and superb craftsmanship.



Marilyn Lanfear: Material Memory

August 24–November 11, 2018

4th Floor Special Exhibitions Gallery

Organizing Curator: Lana Shafer Meador

Mother-of-pearl buttons, lead, and embroidery hoops are some of the wide-ranging materials Marilyn Lanfear uses to tell her stories. Motivated by personal family history and the urge to preserve memories, Lanfear's body of work is a testament to her rich Texas heritage and her industrious spirit. Whether by assembling a collection of carved wooden shelves or soldering a blouse made of lead, Lanfear demonstrates a dedication to the process of art making, techniques, and materials. She elevates the everyday to speak to a common shared experience both through the presence of objects and through what, or who, is missing.

This exhibition presented a selection of the San Antonio artist's works spanning over four decades. While Lanfear's family narratives are the point of departure, her use of symbolic imagery and materials calls forth universal themes such as identity, the importance of place, and memory, which resonate with all of us.

TRAVELING EXHIBITIONS ORGANIZED BY THE MUSEUM

Highest Heaven: Spanish and Portuguese Colonial Art from the Collection of Roberta and Richard Huber was presented March 1–June 3, 2018 at the Chrysler Museum of Art, Norfolk, VA.

The Latino List: Photographs by Timothy Greenfield-Sanders was presented July 13–October 28, 2018 at the International Museum of Art & Science, McAllen, TX.

Marilyn Lanfear (American, born 1930)
Uncle Clarence's Three Wives, triptych, detail:
*Aunt Billie (Billie Patterson Moore died in the school
 explosion in New London, Texas), 2005–2007*
 Mother-of-pearl and plastic buttons on linen
 Gift of Marilyn Lanfear, 2016.33.3.2.a–c
 Photography by Ansen Seale

In Their Own Words

Museum visitors speak up about their experiences.

I loved all of the exhibits! I couldn't get enough of it.

Very good! Muy bien!
Todo muy bonito, gracias!

Worth every SECOND we were here!

I fell in love with the museum...
I FELL HARD, I FELL FAST.

DESERVES A SIXTH STAR!

"I went there thinking I would spend an hour, max,
but I ended up **staying for 2 1/2.**"

VERY COOL STUFF HAPPENING AMIDST INCREDIBLE ART.

World-class museum with the heart of San Antonio.

COOL JOINT.

It's a guaranteed
date night out for us.

"Cultura y Arte! 3 generations
sharing our familia values!

#culturacura#ArtIsAFamilyValue @San Antonio Museum of Art"

AMAZING and MAGICAL!



Learning and Interpreting



THE MUSEUM AS A LEARNING LAB

Last year the Museum served 18,114 students of all ages from 205 schools in 122 school districts as well as eleven colleges and universities. The students came from public, charter, private, and home schools. Student programs are available both in Spanish and English and engage students across all academic subjects.

The Museum's flagship START school partnership program is seven years strong and serves nearly 5,000 students at nine Title I schools. Custom curriculum supports grade-level learning objectives through gallery experiences and studio art. START allows students and educators to connect classroom learning to real-world experiences. The museum is a gateway to many world cultures, creating context and broadening student perspectives.

Our students learned that stories are not just written. They learned that stories can be told in many different ways.

—2nd Grade Teacher, Lamar Elementary

2017–18 Education Impact

K–12 students served	16,651
School districts served by student tours	122
Universities and colleges using the Museum for classes	11
Amount spent on educational programming	\$514,995
Number of public programs	618



At SAMA my students saw art across the ages. It was wonderful for them to access what was previously only found in their textbooks. —Local University Professor

THE MUSEUM AS A COMMUNITY GATHERING PLACE

The Museum offered more than 618 family and public programs to over 32,000 visitors and partnered with dozens of cultural and civic organizations including the Spanish Embassy, VIVACulture Bus, The Pearl, Catholic Charities, Haven for Hope, the San Antonio Book Festival, Univision, and San Antonio Lighthouse for the Blind.

PUBLIC PROGRAM HIGHLIGHTS

- Convened arts educators from across Texas for an intensive two-day workshop on integrating technology and art into high-school fine arts learning with the Texas Cultural Trust Digital Pioneers Institute.
- Orchestrated Festival de Arte every Tuesday night during the “Summer of Spain,” with activities ranging from flamenco dancing to poetry readings and studio art workshops.
- Expanded professional development programs with a new series of Studio Saturday workshops highlighting the talents of local artists.
- Hosted a Spanish Cinema Film Festival featuring the work of female filmmakers.
- Launched Clueseum murder-mystery night, drawing nearly 600 visitors of every age.
- Created *San Antonio 1718* Tricentennial family tote bags and *Egyptian Animal Mummies* backpacks to enrich family engagement in special exhibitions.
- Hosted past and present city Poet Laureates for a poetry reading and panel discussion.



Collecting

The collection of the San Antonio Museum of Art continues to grow in depth, reach, and quality thanks to the generosity of private donors and income from endowed funds. This fiscal year, the Museum added **250** new works of art.

AMERICAN ART



Frank F. English
American, 1854–1922
Untitled (Barnyard Scene), n.d.
Watercolor on paper, mounted to academy board,
16 x 25 in. (40.6 x 63.5 cm)
framed: 22 $\frac{7}{8}$ x 31 $\frac{7}{8}$ in. (58.1 x 81 cm)
Gift of Brig. Gen. David M. Canaan, 2017.18

- ◀ Clara McDonald Williamson
American, 1875–1976
The Harvest, 1954
Oil on panel, 19 x 27 in. (48.3 x 68.6 cm)
Purchased with funds provided by
The Kelso Endowment for Texas Art, 2018.4



◀ Egyptian, Middle Kingdom, ca. 1950 BC
Funerary Relief for Hepy
Limestone, 12 $\frac{11}{16}$ x 12 $\frac{5}{16}$ x 1 $\frac{3}{4}$ in. (32.3 x 31.3 x 4.5 cm)
Purchased with funds provided by
The Lillie and Roy Cullen Endowment
2018.5

ASIAN ART

Zhou Shangwen

Chinese, ca. 1716–1789

Clearing Snow over Myriad Mountains, 1768

Ink and colors on silk, 62 $\frac{3}{4}$ x 20 in. (159.4 x 50.8 cm)

Purchased with funds provided by The Bessie Timon

Asian Art Acquisition Fund, 2017.17

Katsumata Chieko ▼

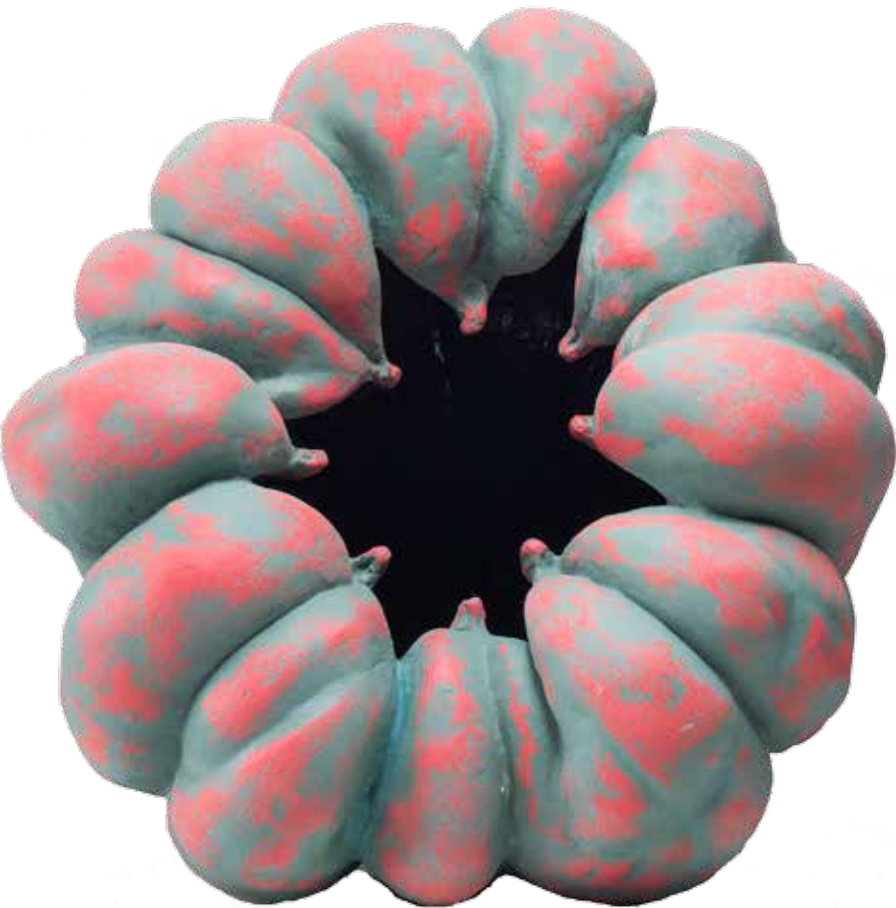
Japanese, born 1950

Biomorphic Sculpture in the Form of a Pumpkin, 2014

Stoneware with colored slip-glaze, 16 x 16 x 16 in.

(40.6 x 40.6 x 40.6 cm)

Gift of Carol and Jeffrey Horvitz, 2017.19.1



Kato Tsubusa ►

Japanese, born 1962

Triangular Heart, 2014

Stoneware with pale-blue glaze, h. 22 $\frac{1}{16}$ in. (56 cm);

w. 11 $\frac{13}{16}$ in. (30 cm); d. 7 $\frac{7}{8}$ in. (20 cm)

Gift of Carol and Jeffrey Horvitz, 2017.19.2

Zhou Jianxiang

Chinese, born 1975

Cross Section #7 – Purity, 2007

Woodcut, oil base inks, 42 x 25 in. (106.7 x 63.5 cm)

Gift of Susan L. and Clarence J. Peters, 2017.21.2

Ryota Aoki

Japanese, born 1978

Bijoux, 2004

Porcelain clay, 17 $\frac{11}{16}$ x 23 $\frac{5}{8}$ x 15 $\frac{1}{16}$ in.

(45 x 59.9 x 39.9 cm)

Gift from Dr. Emily Sano in Honor of Hiroshi and Harumi Yanagi, Kyoto, 2018.7.1–2

Artist unknown

Chinese, Qing dynasty (1644–1911)

Dali Stone Landscape Panel, 19th century

Dali stone and hongmu wood frame, 24 x 13 $\frac{1}{4}$ in. (61 x 33.7 cm)

Purchased with funds provided by the The Bessie Timon Asian Art Acquisition Fund, 2018.6



CONTEMPORARY ART

Timothy Greenfield-Sanders
American, born 1952
Maria Hinojosa, 2011
Pigmented inkjet print, 22 x 17 in. (55.9 x 43.2 cm)
Gift of Isca Greenfield-Sanders, 2017.26.1

Timothy Greenfield-Sanders
American, born 1952
Sandra Guzman, 2011
Pigmented inkjet print, 22 x 17 in. (55.9 x 43.2 cm)
Gift of Isca Greenfield-Sanders, 2017.26.2

Phillip King
British, born Tunisia, 1934
Reel, 1969
Aluminum, stainless steel, plastic,
66 x 150 x 168 in. (167.6 x 381 x 426.7 cm)
Gift of Charles Butt, 2017.22

David Bates
American, born 1952
Bus Stop, 1986
Monotype, 56 x 42 in. (142.2 x 106.7 cm)
Gift of Bill and Sue Sue Bounds in Honor of
Tom Spicer, 2017.23.2

Brett Weston
American, 1911–1993
Lava and Grass, Hawaii, c. 1980
Silver gelatin print, 11 x 14 in.
Gift of Christian Keese Collection, 2017.24.1

Brett Weston
American, 1911–1993
Lava, Hawaii, c. 1980
Silver gelatin print, 11 x 14 in.
Gift of Christian Keese Collection, 2017.24.2

Brett Weston
American, 1911–1993
Tree, Landscape, Hawaii, c. 1980
Silver gelatin print, 11 x 14 in.
Gift of Christian Keese Collection, 2017.24.3

Brett Weston
American, 1911–1993
Cactus and Mountains, Baja, California, 1965
Silver gelatin print, 11 x 14 in.
Gift of Christian Keese Collection, 2017.24.4

Brett Weston
American, 1911–1993
Plants, Desert Landscape, c. 1940
Silver gelatin print, 11 x 14 in.
Gift of Christian Keese Collection, 2017.24.5

Brett Weston
American, 1911–1993
Joshua Trees, Desert Landscape, 1942
Silver gelatin print, 11 x 14 in.
Gift of Christian Keese Collection, 2017.24.6

Brett Weston
American, 1911–1993
Desert Landscape, Owens Valley, c. 1965
Silver gelatin print, 11 x 14 in.
Gift of Christian Keese Collection, 2017.24.7

Brett Weston
American, 1911–1993
Texas Landscape, 1946
Silver gelatin print, 11 x 14 in.
Gift of Christian Keese Collection, 2017.24.8

Brett Weston
American, 1911–1993
Cactus, Arizona, 1968
Silver gelatin print, 11 x 14 in.
Gift of Christian Keese Collection, 2017.24.9

Brett Weston
American, 1911–1993
Sand and Water, c. 1970
Silver gelatin print, 11 x 14 in.
Gift of Christian Keese Collection, 2017.24.10

Brett Weston
American, 1911–1993
Sand and Water, c. 1970
Silver gelatin print, 11 x 14 in.
Gift of Christian Keese Collection, 2017.24.11

Brett Weston
American, 1911–1993
Water and Sand, c. 1970
Silver gelatin print, 11 x 14 in.
Gift of Christian Keese Collection, 2017.24.12

Brett Weston
American, 1911–1993
Water and Sand, 1977
Silver gelatin print, 11 x 14 in.
Gift of Christian Keese Collection, 2017.24.13

Brett Weston
American, 1911–1993
Water and Sand, c. 1970
Silver gelatin print, 11 x 14 in.
Gift of Christian Keese Collection, 2017.24.14

Brett Weston
American, 1911–1993
Water, Reflections, 1971
Silver gelatin print, 11 x 14 in.
Gift of Christian Keese Collection, 2017.24.15

Brett Weston
American, 1911–1993
Hills and Trees, c. 1975
Silver gelatin print, 8 x 10 in.
Gift of Christian Keese Collection, 2017.24.16

Brett Weston
American, 1911–1993
Landscape, Hawaii, c. 1980
Silver gelatin print, 11 x 14 in.
Gift of Christian Keese Collection, 2017.24.17

Brett Weston
American, 1911–1993
Vineyard, Landscape, c. 1955
Silver gelatin print, 11 x 14 in.
Gift of Christian Keese Collection, 2017.24.18

Brett Weston
American, 1911–1993
Landscape, San Juan Grade, California, 1955
Silver gelatin print, 11 x 14 in.
Gift of Christian Keese Collection, 2017.24.19

CONTEMPORARY ART

Brett Weston
American, 1911–1993
Trees, Landscape, c. 1960
Silver gelatin print, 11 x 14 in.
Gift of Christian Keesee Collection, 2017.24.20

Brett Weston
American, 1911–1993
River, Landscape, c. 1950
Silver gelatin print, 11 x 14 in.
Gift of Christian Keesee Collection, 2017.24.21

Brett Weston
American, 1911–1993
Ruins, Monte Alban, Mexico, 1964
Silver gelatin print, 11 x 14 in.
Gift of Christian Keesee Collection, 2017.24.22

Brett Weston
American, 1911–1993
Leaf, Hawaii, 1982
Silver gelatin print, 11 x 14 in.
Gift of Christian Keesee Collection, 2017.24.23

Brett Weston
American, 1911–1993
Leaves, Hawaii, c. 1985
Silver gelatin print, 11 x 14 in.
Gift of Christian Keesee Collection, 2017.24.24

Brett Weston
American, 1911–1993
Plants and Leaves, c. 1985
Silver gelatin print, 11 x 14 in.
Gift of Christian Keesee Collection, 2017.24.25

Brett Weston
American, 1911–1993
Plants and Leaves, c. 1985
Silver gelatin print, 11 x 14 in.
Gift of Christian Keesee Collection, 2017.24.26

Brett Weston
American, 1911–1993
Plants, Hawaii, c. 1985
Silver gelatin print, 11 x 14 in.
Gift of Christian Keesee Collection, 2017.24.267

Brett Weston
American, 1911–1993
Plants and Leaves, Hawaii, c. 1985
Silver gelatin print, 11 x 14 in.
Gift of Christian Keesee Collection, 2017.24.28

Brett Weston
American, 1911–1993
Leaves, Hawaii, c. 1980
Silver gelatin print, 11 x 14 in.
Gift of Christian Keesee Collection, 2017.24.29

Brett Weston
American, 1911–1993
Leaf, Hawaii, c. 1980
Silver gelatin print, 11 x 14 in.
Gift of Christian Keesee Collection, 2017.24.30

Brett Weston
American, 1911–1993
Leaf Cluster, Hawaii, 1978
Silver gelatin print, 11 x 14 in.
Gift of Christian Keesee Collection, 2017.24.31

Brett Weston
American, 1911–1993
Leaves, Hawaii, c. 1985
Silver gelatin print, 11 x 14 in.
Gift of Christian Keesee Collection, 2017.24.32

Brett Weston
American, 1911–1993
Plants, Hawaii, c. 1985
Silver gelatin print, 11 x 14 in.
Gift of Christian Keesee Collection, 2017.24.33

Brett Weston
American, 1911–1993
Leaves, Hawaii, c. 1985
Silver gelatin print, 11 x 14 in.
Gift of Christian Keesee Collection, 2017.24.34

Brett Weston
American, 1911–1993
Leaves, Hawaii, c. 1985
Silver gelatin print, 11 x 14 in.
Gift of Christian Keesee Collection, 2017.24.35

Brett Weston
American, 1911–1993
Leaves and Plants, Hawaii, c. 1985
Silver gelatin print, 11 x 14 in.
Gift of Christian Keesee Collection, 2017.24.36

Brett Weston
American, 1911–1993
Farm Landscape, Bridgeport, California, 1954
Silver gelatin print, 11 x 14 in.
Gift of Christian Keesee Collection, 2017.24.37

Brett Weston
American, 1911–1993
Trees, SW, Mountains, Landscape, c. 1970
Silver gelatin print, 11 x 14 in.
Gift of Christian Keesee Collection, 2017.24.38

Brett Weston
American, 1911–1993
Mountain and Clouds, Hawaii, c. 1980
Silver gelatin print, 11 x 14 in.
Gift of Christian Keesee Collection, 2017.24.39

Brett Weston
American, 1911–1993
Lava, Hawaii, c. 1980
Silver gelatin print, 11 x 14 in.
Gift of Christian Keesee Collection, 2017.24.40

Brett Weston
American, 1911–1993
Landscape, c. 1970
Silver gelatin print, 11 x 14 in.
Gift of Christian Keesee Collection, 2017.24.41

Brett Weston
American, 1911–1993
Landscape, c. 1980
Silver gelatin print, 11 x 14 in.
Gift of Christian Keesee Collection, 2017.24.42

Brett Weston
American, 1911–1993
Desert Landscape, 1981
Silver gelatin print, 11 x 14 in.
Gift of Christian Keesee Collection, 2017.24.43

CONTEMPORARY ART

Brett Weston
American, 1911–1993
Fence, Big Sur, 1962
Silver gelatin print, 11 x 14 in.
Gift of Christian Keese Collection, 2017.24.44

Brett Weston
American, 1911–1993
Trees and Hills, Europe, c. 1968
Silver gelatin print, 11 x 14 in.
Gift of Christian Keese Collection, 2017.24.45

Brett Weston
American, 1911–1993
Rock and Kelp, Carmel Beach, California, 1956
Silver gelatin print, 11 x 14 in.
Gift of Christian Keese Collection, 2017.24.46

Brett Weston
American, 1911–1993
Plants and Leaves, Hawaii, 1974
Silver gelatin print, 11 x 14 in.
Gift of Christian Keese Collection, 2017.24.47

Brett Weston
American, 1911–1993
Dead Tree, Landscape, c. 1970
Silver gelatin print, 11 x 14 in.
Gift of Christian Keese Collection, 2017.24.48

Brett Weston
American, 1911–1993
Cactus and Mountain, c. 1970
Silver gelatin print, 11 x 14 in.
Gift of Christian Keese Collection, 2017.24.49

Brett Weston
American, 1911–1993
Window with Reflections, Europe, 1972
Silver gelatin print, 11 x 14 in.
Gift of Christian Keese Collection, 2017.24.50

Leonard Freed
American, 1929–2006
Roman Catholics clean up after a fight with the army, Londonderry, Northern Ireland, 1971
Vintage gelatin silver print, 8 x 10 in.
Gift of Ernest Pomerantz and Marie Brenner, 2017.25.1

Leonard Freed
American, 1929–2006
Transvestite performers backstage at a performance of the "Cockettes", New York City, 1971
Vintage gelatin silver print, 10 x 8 in.
Gift of Ernest Pomerantz and Marie Brenner, 2017.25.2

Leonard Freed
American, 1929–2006
Provo H.Q., youth party, Amsterdam, Holland, 1966
Vintage gelatin silver print, 8 x 10 in.
Gift of Ernest Pomerantz and Marie Brenner, 2017.25.3

Leonard Freed
American, 1929–2006
Unable to speak English or read, this family is isolated from London life, London, England, 1973
Vintage gelatin silver print, 10 x 8 in.
Gift of Ernest Pomerantz and Marie Brenner, 2017.25.4

Leonard Freed
American, 1929–2006
Reception desk at the New York Stock Exchange. Private police, guarding the building, New York City, 1966
Vintage gelatin silver print, 8 x 10 in.
Gift of Ernest Pomerantz and Marie Brenner, 2017.25.5

Dmitri Baltermants
Russian, 1912–1990
Self-portrait blowing alpenhorn, Switzerland, ca. 1970
Authorized gelatin silver Estate print, 2003, 11 x 14 in.
Gift of Ernest Pomerantz and Marie Brenner, 2017.25.6

Dmitri Baltermants
Russian, 1912–1990
Chinese mountain villagers, n.d.
Authorized gelatin silver Estate print, 2003, 11 x 14 in.
Gift of Ernest Pomerantz and Marie Brenner, 2017.25.7

Dmitri Baltermants
Russian, 1912–1990
Open-air market, Viet Nam, n.d.
Authorized gelatin silver Estate print, 2003, 16 x 20 in.
Gift of Ernest Pomerantz and Marie Brenner, 2017.25.8

Dmitri Baltermants
Russian, 1912–1990
Cockfight, Indonesia, 1957
Authorized gelatin silver Estate print, 2003, 11 x 14 in.
Gift of Ernest Pomerantz and Marie Brenner, 2017.25.9

Dmitri Baltermants
Russian, 1912–1990
Couple outside grocery store, n.d.
Authorized gelatin silver Estate print, 2003, 16 x 20 in.
Gift of Ernest Pomerantz and Marie Brenner, 2017.25.10

Dmitri Baltermants
Russian, 1912–1990
Beach parking-lot, South of France, ca. 1960
Authorized gelatin silver Estate print, 2003, 16 x 20 in.
Gift of Ernest Pomerantz and Marie Brenner, 2017.25.11

Dmitri Baltermants
Russian, 1912–1990
A bittersweet farewell: a soldier with his fiancée, n.d.
Authorized gelatin silver Estate print, 2003, 11 x 14 in.
Gift of Ernest Pomerantz and Marie Brenner, 2017.25.12

Dmitri Baltermants
Russian, 1912–1990
Construction of the Komsomolskaya Blast Furnace, Zhdanov City, n.d.
Authorized gelatin silver Estate print, 2003, 16 x 20 in.
Gift of Ernest Pomerantz and Marie Brenner, 2017.25.13

Dmitri Baltermants
Russian, 1912–1990
Oilworker in the Caspian Sea, near Baku, Azerbaijan, 1960
Authorized gelatin silver Estate print, 2003, 11 x 14 in.
Gift of Ernest Pomerantz and Marie Brenner, 2017.25.14

CONTEMPORARY ART

Dmitri Baltermants
Russian, 1912–1990
Landscape with oil derricks, n.d.
Authorized gelatin silver Estate print, 2003,
16 x 20 in.
Gift of Ernest Pomerantz and Marie Brenner,
2017.25.15

Dmitri Baltermants
Russian, 1912–1990
The Globe (Society of Young Geographers), 1950
Authorized gelatin silver Estate print, 2003, 11 x 14 in.
Gift of Ernest Pomerantz and Marie Brenner,
2017.25.16

Dmitri Baltermants
Russian, 1912–1990
A Difficult Toast: Khrushchev and Mao, 1959
Authorized gelatin silver Estate print, 2003, 11 x 14 in.
Gift of Ernest Pomerantz and Marie Brenner,
2017.25.17

Dmitri Baltermants
Russian, 1912–1990
Mao and Voroshilov, China 1957
Authorized gelatin silver Estate print, 2003, 11 x 14 in.
Gift of Ernest Pomerantz and Marie Brenner,
2017.25.18

Dmitri Baltermants
Russian, 1912–1990
*Boris Yeltsin addresses the watershed XIX All-Union
Communist Party Conference on the topic of
Perestroika, as Gorbachev and Gromyko reflect on
his words, Summer*, 1988
Authorized gelatin silver Estate print, 2003, 11 x 14 in.
Gift of Ernest Pomerantz and Marie Brenner,
2017.25.19

W. E. Dassonville
American, 1879–1957
Trees, High Sierras, n.d.
Silver gelatin print, c. 1930s, 9 ¾ x 6 ⅞ in.
Gift of Ernest Pomerantz and Marie Brenner,
2017.25.20

W. E. Dassonville
American, 1879–1957
Owens Valley, California, n.d.
Silver gelatin print, c. 1930s, 7 ¾ x 10 in.
Gift of Ernest Pomerantz and Marie Brenner,
2017.25.21

Mario Finocchiaro
Italian, ca. 1920–1999
*Men walking past flea market, barefoot man in shorts
running with wood plank on shoulder*, n.d.
Vintage silver gelatin print, ca. 1970s, 4 1/8 x 2 ¾ in.
Gift of Ernest Pomerantz and Marie Brenner,
2017.25.22

Mario Finocchiaro
Italian, ca. 1920–1999
Young Man, c. 1960
Vintage gelatin silver print, 11 ¾ x 9 ½ in.
Gift of Ernest Pomerantz and Marie Brenner,
2017.25.23

Mario Finocchiaro
Italian, ca. 1920–1999
Man and Tram, Vienna, c. 1960
Vintage ferrotyped gelatin silver print, 9 ½ x 12 in.
Gift of Ernest Pomerantz and Marie Brenner,
2017.25.24

Mario Finocchiaro
Italian, ca. 1920–1999
*Children Behind Gate - Flower Village in Demolition
("villaggio dei fiori in demolizione")*, 1965
Vintage ferrotyped gelatin silver print, 11 ½ x 9 ½ in.
Gift of Ernest Pomerantz and Marie Brenner,
2017.25.25

Mario Finocchiaro
Italian, ca. 1920–1999
*Young People Playing Guitars on the Lawn - Parco
Sempione, Milan ("Parco Sempione, Milano")*, 1979
Vintage ferrotyped gelatin silver print, 12 x 16 in.
Gift of Ernest Pomerantz and Marie Brenner,
2017.25.26

Ken Heyman
American, born 1930
*In the early morning, business men doing pious work in
the mud of the holy Ganges River, before bathing and
going off to work, Calcutta, India*, 1962
Vintage gelatin silver print, 16 x 20 in.
Gift of Ernest Pomerantz and Marie Brenner,
2017.25.27

Ken Heyman
American, born 1930
Gang fight, Coney Island, 1958
Vintage gelatin silver print, 4 ¾ x 7 in.
Gift of Ernest Pomerantz and Marie Brenner,
2017.25.28

Ken Heyman
American, born 1930
*Girl with her doll near the entrance to a store-front
church in Brooklyn (labeled as Lower East Side),
New York*, 1965
Early gelatin silver print, 20 x 16 in.
Gift of Ernest Pomerantz and Marie Brenner,
2017.25.29

Ken Heyman
American, born 1930
*Women and a child in traditional African clothing,
Woodstock, USA*, 1965
Vintage gelatin silver print, 10 ¾ x 13 ½ in.
Gift of Ernest Pomerantz and Marie Brenner,
2017.25.30

Ken Heyman
American, born 1930
*Claes Oldenburg, Allen Jones, Roy Lichtenstein, British
fashion model Jean Shrimpton and Andy Warhol*, 1964
Vintage or early gelatin silver print, 14 x 17 in.
Gift of Ernest Pomerantz and Marie Brenner,
2017.25.31

Ken Heyman
American, born 1930
*A man teaching an illiterate farmer to write,
Honduras*, n.d.
Vintage gelatin silver print, 7 x 10 in.
Gift of Ernest Pomerantz and Marie Brenner,
2017.25.32

CONTEMPORARY ART

Ken Heyman
American, born 1930
Jacques-Henri Lartigue, n.d.
Later gelatin silver print, 14 x 17 in.
Gift of Ernest Pomerantz and Marie Brenner,
2017.25.33

Ken Heyman
American, born 1930
Market trading, Nigeria, 1960
Early gelatin silver print, 1969, 11 x 14 in.
Gift of Ernest Pomerantz and Marie Brenner,
2017.25.34

Ken Heyman
American, born 1930
The bath with sea water in Hong Kong, where water is rationed, n.d.
Vintage gelatin silver print, 14 ¾ x 10 ½ in.
Gift of Ernest Pomerantz and Marie Brenner,
2017.25.35

Ken Heyman
American, born 1930
Boy looking at lifesize dolls, 1987
Later gelatin silver print, 11 x 14 in.
Signed on recto; titled and with credit stamps on verso
Gift of Ernest Pomerantz and Marie Brenner,
2017.25.36

Danny Lyon
American, born 1942
Untitled (boy and man) from "What Hopes Have Perished with you My Son," In Memory of Johnnie Sanches (1960–83), Our Lady of Sorrows Cemetery, Bernalillo, New Mexico, 1983
Later gelatin silver print, 11 x 14 in.
Gift of Ernest Pomerantz and Marie Brenner,
2017.25.37

Danny Lyon
American, born 1942
Navajo Reservation, south of Shiprock, New Mexico, 1972
Later gelatin silver print, 11 x 14 in.
Gift of Ernest Pomerantz and Marie Brenner,
2017.25.38

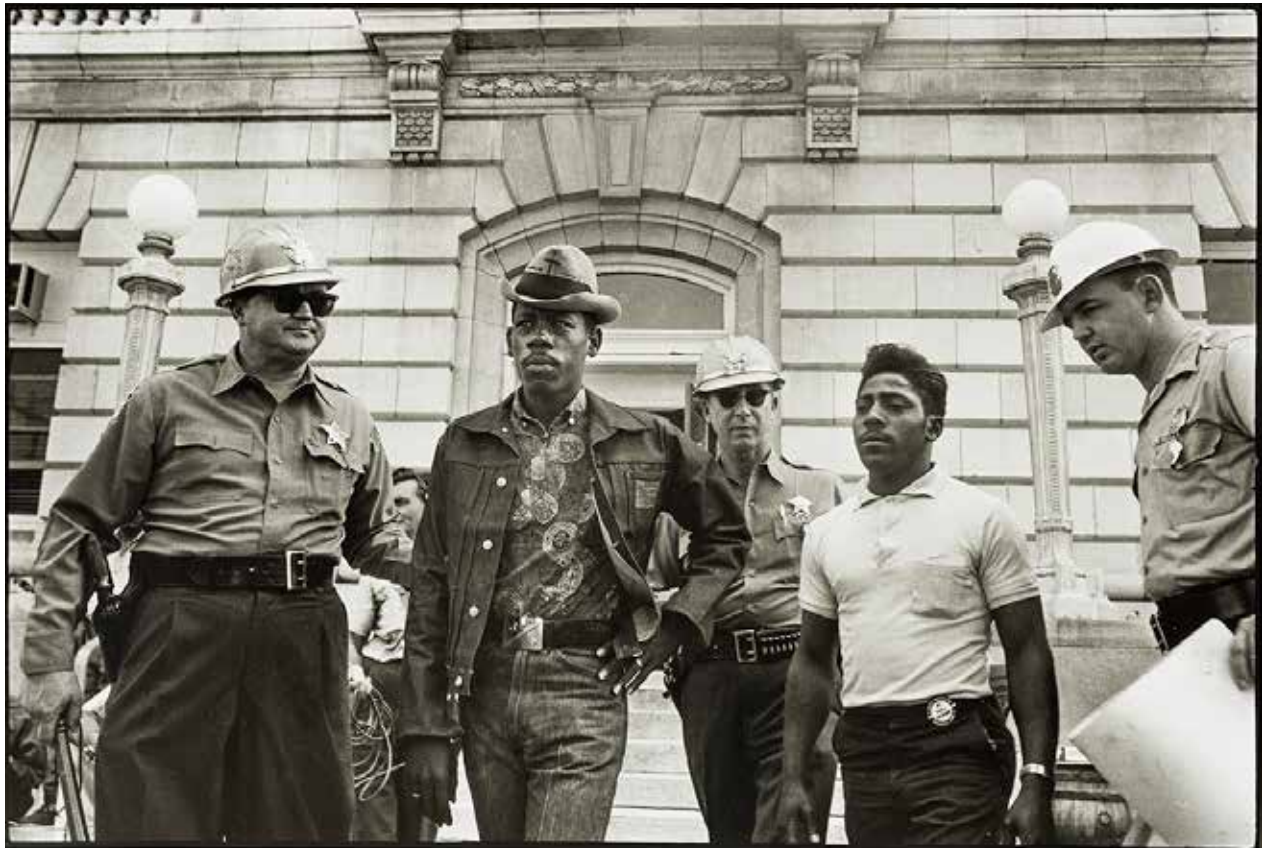
Danny Lyon
American, born 1942
West 87th Street, Manhattan, 1969
Later gelatin silver print, 11 x 14 in.
Gift of Ernest Pomerantz and Marie Brenner,
2017.25.39

Danny Lyon
American, born 1942
Arrest of demonstrators, Berkeley, 1969
Later gelatin silver print, 11 x 14 in.
Gift of Ernest Pomerantz and Marie Brenner,
2017.25.40

Danny Lyon
American, born 1942
Two inmates, Goree Unit, 1968
Later gelatin silver print, 11 x 14 in.
Gift of Ernest Pomerantz and Marie Brenner,
2017.25.41

▼ Danny Lyon
American, born 1942
Sheriff Jim Clark arrests two SNCC voter registration workers on the steps of the federal building, Selma, Alabama, 1963
Later gelatin silver print, 11 x 14 in.
Gift of Ernest Pomerantz and Marie Brenner,
2017.25.42

Danny Lyon
American, born 1942
Sheriff Jim Clark arrests two SNCC voter registration workers on the steps of the federal building, Selma, Alabama, 1963
Later gelatin silver print, 11 x 14 in.
Gift of Ernest Pomerantz and Marie Brenner,
2017.25.43



CONTEMPORARY ART

Danny Lyon
American, born 1942
Hyde Park, Chicago, 1961
Later gelatin silver print, 11 x 14 in.
Gift of Ernest Pomerantz and Marie Brenner,
2017.25.44

Arthur Rothstein
American, 1915–1985
Migrant to Oregon from South Dakota, 1936
Gelatin silver print, printed later, 9 x 12 in.
Gift of Ernest Pomerantz and Marie Brenner,
2017.25.45

Arthur Rothstein
American, 1915–1985
Dust storm, Cimarron County, Oklahoma, 1936
Gelatin silver print, printed later, 10 ½ x 13 inches
Gift of Ernest Pomerantz and Marie Brenner,
2017.25.46

Stephen Shore
American, born 1947
State capitol at Albany, c. 1980
Vintage chromogenic contact print
8 x 10 in.
Gift of Ernest Pomerantz and Marie Brenner,
2017.25.47

Lou Stoumen
American, 1915–1985
Yawning, Times Square, c. 1979
Vintage gelatin silver print, 10 x 8 in.
Gift of Ernest Pomerantz and Marie Brenner,
2017.25.48

Lou Stoumen ▶
American, 1915–1985
Hell Night, Times Square, c. 1979
Vintage gelatin silver print, 10 x 8 in.
Gift of Ernest Pomerantz and Marie Brenner,
2017.25.49

Lou Stoumen
American, 1915–1985
Sunday Strollers, Times Square, c. 1982
Vintage gelatin silver print, 10 x 8 in.
Gift of Ernest Pomerantz and Marie Brenner,
2017.25.50

Lou Stoumen
American, 1915–1985
The Bethlehem plant of Bethlehem Steel Company, Bethlehem, Pennsylvania, 1930s
Later gelatin silver print, 8 x 10 in.
Gift of Ernest Pomerantz and Marie Brenner,
2017.25.51

Lou Stoumen
American, 1915–1985
Woman for Hire, Puerto Rico (Reversed Negative), 1941
Later gelatin silver print, 10 x 8 in.
Gift of Ernest Pomerantz and Marie Brenner,
2017.25.52

Lou Stoumen
American, 1915–1985
Lovers, Los Angeles, 1981
Vintage gelatin silver print, 14 x 11 in.
Gift of Ernest Pomerantz and Marie Brenner,
2017.25.53

Lou Stoumen
American, 1915–1985
Stanley's Tattoo, South Atlantic, 1944
Later gelatin silver print, 10 x 8 in.
Gift of Ernest Pomerantz and Marie Brenner,
2017.25.54

Lou Stoumen
American, 1915–1985
Zero, c. 1937
Later gelatin silver print, 9 x 4 in.
Gift of Ernest Pomerantz and Marie Brenner,
2017.25.55

Lou Stoumen
American, 1915–1985
Rake and Young Vine, 1978
Vintage gelatin silver print, 14 x 11 in.
Gift of Ernest Pomerantz and Marie Brenner,
2017.25.56



CONTEMPORARY ART

Lou Stoumen
American, 1915–1985
Building Silhouette, Hiroshima, Japan, 1982
Vintage gelatin silver print, 11 x 14 in.
Gift of Ernest Pomerantz and Marie Brenner,
2017.25.57

Lou Stoumen
American, 1915–1985
The Barber of Naolinco, Mexico, 1979
Vintage gelatin silver print, 20 x 16 in.
Gift of Ernest Pomerantz and Marie Brenner,
2017.25.58

Lou Stoumen
American, 1915–1985
Danger, Don't Lean on Rock, 1991
Vintage gelatin silver print, 11 x 14 in.
Gift of Ernest Pomerantz and Marie Brenner,
2017.25.59

Lou Stoumen
American, 1915–1985
Venice Beach, Los Angeles, 1967
Vintage gelatin silver print, 14 x 11 in.
Gift of Ernest Pomerantz and Marie Brenner,
2017.25.60

William Witt
American, 1921–2013
Place of Sorrow, India, 1943
Later gelatin silver print, c. 1978, 11 x 14 in.
Gift of Ernest Pomerantz and Marie Brenner,
2017.25.61

William Witt
American, 1921–2013
Curious Children, India, 1943
Vintage gelatin silver print, 10 x 8 in.
Gift of Ernest Pomerantz and Marie Brenner,
2017.25.62

William Witt
American, 1921–2013
Hindu Girl Profile, India, c. 1944
Vintage gelatin silver print, 10 x 8 in.
Gift of Ernest Pomerantz and Marie Brenner,
2017.25.63

William Witt
American, 1921–2013
Bullock Cart Driver, India, 1944
Vintage gelatin silver print, c. 1944–1950, 11 x 14 in.
Gift of Ernest Pomerantz and Marie Brenner,
2017.25.64

William Witt
American, 1921–2013
Ram Gopal in Classical Temple Dance, New Delhi, India, 1944
Vintage gelatin silver print, 14 x 11 in.
Gift of Ernest Pomerantz and Marie Brenner,
2017.25.65

William Witt
American, 1921–2013
Doris with Black Hat and Gloves (view #2), 1948
Later gelatin silver print, 11 x 14 in.
Gift of Ernest Pomerantz and Marie Brenner,
2017.25.66

William Witt
American, 1921–2013
Helen's Back, 1947
Later gelatin silver print, 14 x 11 in.
Gift of Ernest Pomerantz and Marie Brenner,
2017.25.67

William Witt
American, 1921–2013
Black Nude and Radiator, 1948
Later gelatin silver print, 14 x 11 in.
Gift of Ernest Pomerantz and Marie Brenner,
2017.25.68

Mark Citret
American, born 1949
Storm East of the Dunes (Dunes #67), Death Valley, 2004
Gelatin silver print on vellum (Kodak Polyfiber A),
8 ½ x 11 in.
Gift of Ernest Pomerantz and Marie Brenner,
2017.25.69

Mark Citret
American, born 1949
Amphitheater Bridge, Acadia National Park, 1989
Gelatin silver print on vellum (Kodak Polyfiber A),
8 ½ x 11 in.
Gift of Ernest Pomerantz and Marie Brenner,
2017.25.70

Mark Citret
American, born 1949
Dusk, Drakes Beach, 2002
Gelatin silver print on vellum (Kodak Polyfiber A),
8 ½ x 11 in.
Gift of Ernest Pomerantz and Marie Brenner, 2017.25.71

Mark Citret
American, born 1949
Aspen Leaf, Lundys Canyon, 1999
Gelatin silver print on vellum (Kodak Polyfiber A),
5 ½ x 8 ½ in.
Gift of Ernest Pomerantz and Marie Brenner,
2017.25.72

Mark Citret
American, born 1949
Palm, San Juan Bautista, 1999
Gelatin silver print on vellum (Kodak Polyfiber A),
8 ½ x 5 ½ in.
Gift of Ernest Pomerantz and Marie Brenner,
2017.25.73

Danny Lyon
American, born 1942
Ralph Allen taking an affidavit from Carolyn Daniels in Terrell County, Georgia, 1962
Gelatin silver print, printed later, 11 x 14 in.
Gift of Ernest Pomerantz and Marie Brenner,
2017.25.74

Danny Lyon
American, born 1942
Dr. Martin Luther King, Jr. and Reverend Ralph Abernathy are escorted back to jail in Albany, Georgia, 1962
Gelatin silver print, printed later, 11 x 14 in.
Gift of Ernest Pomerantz and Marie Brenner,
2017.25.75

CONTEMPORARY ART

Danny Lyon
American, born 1942
Entrance to the City Café, Selma, 1963
Gelatin silver print, printed later, 11 x 14 in.
Gift of Ernest Pomerantz and Marie Brenner,
2017.25.76

Danny Lyon
American, born 1942
Atlanta, police car window, 1963
Gelatin silver print, printed later, 11 x 14 in.
Gift of Ernest Pomerantz and Marie Brenner,
2017.25.77

Danny Lyon
American, born 1942
Clifford Vaughns, another SNCC photographer, is arrested by the National Guard, Cambridge, Maryland, 1964
Gelatin silver print, printed later, 11 x 14 in.
Gift of Ernest Pomerantz and Marie Brenner,
2017.25.78

Bill Owens
American, born 1938
The Future Farmers of America (F.F.A) encourages the kids to look at the lamb as a business enterprise. Where you purchase the animal and feed and turn a profit when the animal is sold. Showmanship is displaying the animal so it will bring the best price. Each kid is dressed in a uniform, white pants, F.F.A. tie, jacket and a white shirt. You must keep the animal between yourself and the judge. Tri-Valley Area, Northern California, 1969–75
From the *Our Kind of People* series
Vintage gelatin silver print, 8 x 10 in.
Gift of Ernest Pomerantz and Marie Brenner,
2017.25.79

Bill Owens
American, born 1938
Two men in suits waiting in reception, Tri-Valley Area, Northern California, 1974–76
From the *Working* series
Vintage gelatin silver print, 8 x 10 in.
Gift of Ernest Pomerantz and Marie Brenner,
2017.25.80

Bill Owens
American, born 1938
Automobile auction, Tri-Valley Area, Northern California, 1974–76
From the *Working* series
Vintage gelatin silver print, 8 x 10 in.
Gift of Ernest Pomerantz and Marie Brenner,
2017.25.81

Bill Owens
American, born 1938
My dream is to have a cabin in the mountains. Sierra-Nevada foothills, California, 1976
From the *Leisure* series
Gelatin silver print, printed 1999, Edition 2/15,
11 x 14 in.
Gift of Ernest Pomerantz and Marie Brenner,
2017.25.82

Bill Owens
American, born 1938
On our commune everyone has to work. We chase off the freeloaders. The commune has to make money. It has to be a business, then it can grow. The government isn't going to take care of you. You have to band together to help each other. Taos, New Mexico, 1976
From the *Working* series
Gelatin silver print, printed 2006, 10 x 8 in.
Gift of Ernest Pomerantz and Marie Brenner,
2017.25.83

Guglielmo Barberio
Italian, active 20th century
Luna Park N4, Italy, c.1950
Vintage ferrotyped gelatin silver print, 11 x 15 in.
Gift of Ernest Pomerantz and Marie Brenner,
2017.25.84

Ulisse Bezzi
Italian, active 20th century
Zona industriale (industrial zone), 1966
Vintage ferrotyped gelatin silver print, 11 ¾ x 15 ½ in.
Gift of Ernest Pomerantz and Marie Brenner,
2017.25.85

Augusto Cantamessa
Italian, active 20th century
Beach view with man and rocks, Italy, 1967
Vintage ferrotyped gelatin silver print,
5 1/2 x 15 1/2 in.
Gift of Ernest Pomerantz and Marie Brenner,
2017.25.86

Giuseppe Goffis
Italian, active 20th century
Elettra (solarized female nude), 1959
Vintage gelatin silver print, 10 3/4 x 10 1/4 in.
Gift of Ernest Pomerantz and Marie Brenner,
2017.25.87

Antonio Leoni
Italian, active 20th century
Wall Abstraction, Cremona Cathedral, Lombardy, Italy, from the series Cronache di Pietra (Annals of Stone), ca. 1980
Vintage ferrotyped gelatin silver print,
11 ½ x 12 in.
Gift of Ernest Pomerantz and Marie Brenner,
2017.25.88

Enzo Passaretti
Italian, active 20th century
Corrida, numero 3 (bullfight, number 3), ca. 1960's
Vintage ferrotyped gelatin silver print,
11 ¾ x 15 ¾ in.
Gift of Ernest Pomerantz and Marie Brenner,
2017.25.89

Ezio Quiresi
Italian, active 20th century
Casa a Bonelli, Il delta del Po (House at Bonelli, the delta of Po), Italy, 1964
Vintage ferrotyped gelatin silver print,
12 x 15 ¾ in.
Gift of Ernest Pomerantz and Marie Brenner,
2017.25.90

Piero Vistali
Italian, active 20th century
Bosco selezionato (wood selection), ca. 1960
Vintage ferrotyped gelatin silver print,
13 ½ x 9 ½ in.
Gift of Ernest Pomerantz and Marie Brenner,
2017.25.91

CONTEMPORARY ART

Paul Caponigro
American, born 1932
Untitled (Glass cover), n.d.
Made from Polaroid Positive/Negative 4x5 film
Type 55, 7 ½ x 9 ½ in.
Gift of Ernest Pomerantz and Marie Brenner,
2017.25.92

Paul Caponigro American, born 1932
American, born 1932
Dutch Pipe Vine, Brewster, NY, 1963 (original negative)
Made from Polaroid Positive/Negative 4x5 film
Type 55, 4 ½ x 3 ½ in.
Gift of Ernest Pomerantz and Marie Brenner,
2017.25.93

Paul Caponigro
American, born 1932
Untitled (View of houses) (enlargement print), n.d.
Made from Polaroid Positive/Negative 4x5 film
Type 55, 7 ¾ x 9 ¾ in.
Gift of Ernest Pomerantz and Marie Brenner,
2017.25.94

Paul Caponigro
American, born 1932
Untitled (Bowl of fruit), n.d.
Made from Polaroid Positive/Negative 4x5 film
Type 55, 7 1/8 x 6 7/8 in.
Gift of Ernest Pomerantz and Marie Brenner,
2017.25.95

Paul Caponigro
American, born 1932
Untitled (Rocks and rushing water), n.d.
Made from Polaroid Positive/Negative 4x5 film
Type 55, 8 x 6 ¼ in.
Gift of Ernest Pomerantz and Marie Brenner,
2017.25.96

Paul Caponigro
American, born 1932
Blue Ridge Parkway, Kentucky, 1965
Made from Polaroid Positive/Negative 4x5 film
Type 55, 7 ¾ x 9 ¾ in.
Gift of Ernest Pomerantz and Marie Brenner,
2017.25.97

Paul Caponigro
American, born 1932
Untitled (dead tree wood), n.d.
Made from Polaroid Positive/Negative 4x5 film Type 42,
3 ½ x 4 ½ in.
Gift of Ernest Pomerantz and Marie Brenner,
2017.25.98

Jacques Lowe
American, born Germany, 1924–2001
Cigarette ad – woman in coat holding a cigarette,
c. 1955
Vintage gelatin silver print, 14 x 11 in.
Gift of Ernest Pomerantz and Marie Brenner,
2017.25.99

Jacques Lowe
American, born Germany, 1924–2001
Bufferin aspirin ad – man with headache reading newspaper, c. 1955
Vintage gelatin silver print
11 ¼ x 10 ½ inches
Gift of Ernest Pomerantz and Marie Brenner,
2017.25.100

Jacques Lowe
American, born Germany, 1924–2001
Williams & Humbert liquor ad – Dry Sack sherry with full glass, c. 1955
Vintage gelatin silver print, 14 x 11 in.
Gift of Ernest Pomerantz and Marie Brenner,
2017.25.101

Jacques Lowe
American, born Germany, 1924–2001
On the set of “On the Waterfront” – producer Sam Spiegel, 1954
Vintage gelatin silver print, 9 ½ x 6 ½ in.
Gift of Ernest Pomerantz and Marie Brenner,
2017.25.102

Jacques Lowe
American, born Germany, 1924–2001
Tuesday Weld – portrait with hair band and backlit hair,
c. 1960
Vintage gelatin silver print, 12 ¼ x 11 in.
Gift of Ernest Pomerantz and Marie Brenner,
2017.25.103

Jacques Lowe
American, born Germany, 1924–2001
Tuesday Weld – sitting in window frame with the book Lolita on the side, c. 1960
Vintage gelatin silver print, 14 x 11 in.
Gift of Ernest Pomerantz and Marie Brenner,
2017.25.104

Jacques Lowe
American, born Germany, 1924–2001
Sandra Dee – combing hair in mirror reflection,
c. 1960s
Vintage gelatin silver print, 14 x 11 in.
Gift of Ernest Pomerantz and Marie Brenner,
2017.25.105

Jacques Lowe
American, born Germany, 1924–2001
Jose Garcia poses with his wife, five children, and grandparents who live with them in small rented house, Puerto Rico, 1954
Vintage gelatin silver print, 11 x 6 ¾ in.
Gift of Ernest Pomerantz and Marie Brenner,
2017.25.106

Jacques Lowe
American, born Germany, 1924–2001
Jose still likes farm life, enjoys weekend visits to his brother Juan's farm, Puerto Rico, 1954
Vintage gelatin silver print, 11 x 7 in.
Gift of Ernest Pomerantz and Marie Brenner,
2017.25.107

Jacques Lowe
American, born Germany, 1924–2001
Gypsy women resting under a tree, Saintes Maries de la Mer, France, 1953
Vintage gelatin silver print, 14 x 11 in.
Gift of Ernest Pomerantz and Marie Brenner,
2017.25.108

Jacques Lowe
American, 1930–2001
Gypsy man pouring liqueur behind banjo player, Saintes Maries de la Mer, France, 1953
Vintage ferrotyped gelatin silver print, 10 x 7 in.
Gift of Ernest Pomerantz and Marie Brenner,
2017.25.109

CONTEMPORARY ART

Jacques Lowe
American, 1930–2001
Gypsy wedding dinner, Saintes Maries de la Mer, France, 1953
Vintage gelatin silver print, 14 x 11 in.
Gift of Ernest Pomerantz and Marie Brenner, 2017.25.110

Jacques Lowe
American, 1930–2001
Christina Gillespie, Thom Malinaro and Michele Burke from the cast of The Boy Friend, off-Broadway Revival, New York, 1958
Vintage gelatin silver print, 14 x 11 in.
Gift of Ernest Pomerantz and Marie Brenner, 2017.25.111

Jacques Lowe
American, 1930–2001
A boy buys a parakeet, c. 1959
Vintage gelatin silver print, 13 ½ x 10 ¼ in.
Gift of Ernest Pomerantz and Marie Brenner, 2017.25.112

Edward Quigley
American, 1898–1977
Reversed-tonality still life with plants, 1931
Vintage gelatin silver print, 4 ¾ x 3 ¾ inches
Gift of Ernest Pomerantz and Marie Brenner, 2017.25.113

Edward Quigley
American, 1898–1977
Reversed-tonality still life with plants in glass, 1931
Vintage gelatin silver print, 4 ½ x 3 ¾ inches
Gift of Ernest Pomerantz and Marie Brenner, 2017.25.114

Edward Quigley
American, 1898–1977
Still life with machine, 1937
Vintage gelatin silver print, 6 ½ x 4 5/8 in.
Gift of Ernest Pomerantz and Marie Brenner, 2017.25.115

Edward Quigley
American, 1898–1977
Engine inspectors checking to see if engines in check, 1940
Vintage gelatin silver print, 3 x 4 in.
Gift of Ernest Pomerantz and Marie Brenner, 2017.25.116

Edward Quigley
American, 1898–1977
Textile worker, 1942
Vintage gelatin silver print, 5 ¾ x 4 ½ in.
Gift of Ernest Pomerantz and Marie Brenner, 2017.25.117

Edward Quigley
American, 1898–1977
Modernist study of clouds and trees, 1935
Vintage gelatin silver print, 3 ¾ x 2 5/8 in.
Gift of Ernest Pomerantz and Marie Brenner, 2017.25.118

Edward Quigley
American, 1898–1977
Still life with figurine and glass jar, 1929
Vintage gelatin silver print, 5 ⅞ x 4 ½ in.
Gift of Ernest Pomerantz and Marie Brenner, 2017.25.119

Edward Quigley
American, 1898–1977
Advertisement for Provident Trust Company, Philadelphia, 1939
Vintage gelatin silver print, 4 5/8 x 6 5/8 in.
Gift of Ernest Pomerantz and Marie Brenner, 2017.25.120

Edward Quigley
American, 1898–1977
Still life with two metal bits, 1941
Vintage gelatin silver print, 11 x 14 in.
Gift of Ernest Pomerantz and Marie Brenner, 2017.25.121

Edward Quigley
American, 1898–1977
Crocodile, c. 1940
Vintage gelatin silver print, 8 ¾ x 7 ½ in.
Gift of Ernest Pomerantz and Marie Brenner, 2017.25.122

Edward Quigley
American, 1898–1977
Landscape with tree, c. 1935
Vintage gelatin silver print, 6 x 10 in.
Gift of Ernest Pomerantz and Marie Brenner, 2017.25.123

Edward Quigley
American, 1898–1977
Modernist study of tree branches covered in snow, c. 1942
Vintage ferrotyped gelatin silver print, 10 x 8 in.
Gift of Ernest Pomerantz and Marie Brenner, 2017.25.124

Edward Quigley
American, 1898–1977
Two cats facing off outdoors, 1937
Vintage gelatin silver print, 14 x 11 in.
Gift of Ernest Pomerantz and Marie Brenner, 2017.25.125

Edward Quigley
American, 1898–1977
Two cats with toy sailboat, 1937
Vintage gelatin silver print, 10 x 8 in.
Gift of Ernest Pomerantz and Marie Brenner, 2017.25.126

Paul J. Woolf
American, active ca. 1930–1940
Leo Friedlander Frieze, Rockefeller Center, 1930s
Vintage gelatin silver print, 1930s, 9 ½ x 7 ½ in.
Gift of Ernest Pomerantz and Marie Brenner, 2017.25.127

Paul J. Woolf
American, active ca. 1930–1940
Lincoln Bar Exterior, 1930s
Vintage gelatin silver print, 1930s, 6 ½ x 9 ½ in.
Gift of Ernest Pomerantz and Marie Brenner, 2017.25.128

Paul J. Woolf
American, active ca. 1930–1940
Manhattan Skyline at Night, 1930s
Vintage silver gelatin print, 1930s, 2 ⅞ x 4 ¾ in.
Gift of Ernest Pomerantz and Marie Brenner, 2017.25.129

CONTEMPORARY ART

Paul J. Woolf
American, active ca. 1930–1940
Diners at the Rainbow Room, Rockefeller Plaza, 1930s
Vintage silver gelatin print, 1930s, 5 1/8 x 3 3/4 in.
Gift of Ernest Pomerantz and Marie Brenner, 2017.25.130

Henry Horenstein
American, born 1947
Wesorts, 1996
From the *Wesorts* series
Gelatin silver print, printed 2006, 16 x 20 in.
Gift of Ernest Pomerantz and Marie Brenner, 2017.25.131

Henry Horenstein
American, born 1947
Kids Digging in the Backyard, Woonsocket, Rhode Island, 1979
Vintage gelatin silver print, 14 x 11 in.
Gift of Ernest Pomerantz and Marie Brenner, 2017.25.132

Henry Horenstein
American, born 1947
Hank Snow, Grand Ole Opry, Nashville, Tennessee, 1974
From the *Honky Tonk* series
Early gelatin silver print, Edition 3/25, 20 x 16 in.
Gift of Ernest Pomerantz and Marie Brenner, 2017.25.133

Henry Horenstein
American, born 1947
Common Wasp - Vespa Vulgaris, 1995–2001
From the *Animalia* series
C-print, 16 x 20 in.
Gift of Ernest Pomerantz and Marie Brenner, 2017.25.134

Henry Horenstein
American, born 1947
Gavial - Gavialis gangeticus, 1995–2001
From the *Animalia / Creatures* series
Cibachrome, 16 x 20 in.
Gift of Ernest Pomerantz and Marie Brenner, 2017.25.135

Henry Horenstein
American, born 1947
Patrons at a Honky Tonk, Lafayette, Louisiana, 1977
From the *Honky Tonk* series
Gelatin silver print, printed 2007, Edition 4/25, 20 x 16 in.
Gift of Ernest Pomerantz and Marie Brenner, 2017.25.136

Henry Horenstein
American, born 1947
Before the Double, Great Barrington Fair, Great Barrington, Massachusetts, 1978
From the *Racing Days* series
Vintage gelatin silver print, print 3 / 4, 16 x 20 in.
Gift of Ernest Pomerantz and Marie Brenner, 2017.25.137

Henry Horenstein
American, born 1947
Cheerleaders on the Bus, Natick High School, Massachusetts, 1986
Gelatin silver print, printed c. 1986, 16 x 20 in.
Gift of Ernest Pomerantz and Marie Brenner, 2017.25.138

Henry Horenstein
American, born 1947
Legs, Seekonk Speedway, Seekonk, Massachusetts, 1985
From the series: *You Can Still Get Your Kicks on Route 6*, Boston Globe
Gelatin silver print, printed c. 1985, print 2 / 3, 11 x 14 in.
Gift of Ernest Pomerantz and Marie Brenner, 2017.25.139

Henry Horenstein
American, born 1947
Patron, Bar on Boardwalk, Hollywood, Florida, 1994
Gelatin silver print, printed c. 1994, 16 x 20 in.
Gift of Ernest Pomerantz and Marie Brenner, 2017.25.140

Todd Webb
American 1905–2000
Apricot Workers, Ibiza, Balearic Islands, Spain, 1951
Vintage gelatin silver print, 8 x 10 in.
Gift of Ernest Pomerantz and Marie Brenner, 2017.25.141

Todd Webb
American 1905–2000
Patio Door, O'Keeffe's Abiquiu House, 1977
Vintage gelatin silver print, 11 x 14 in.
Gift of Ernest Pomerantz and Marie Brenner, 2017.25.142

Todd Webb
American 1905–2000
Kotor, Yugoslavia (girl in motion in alley), 1972
Vintage gelatin silver print, 8 x 10 in.
Gift of Ernest Pomerantz and Marie Brenner, 2017.25.143

Todd Webb
American 1905–2000
Cafe near Bull Ring, Ronda, Spain 4/79, 1979
Vintage gelatin silver print, 10 x 13 in.
Gift of Ernest Pomerantz and Marie Brenner, 2017.25.144

Todd Webb
American 1905–2000
Torn Billboard, Harlem, New York, 1946
Later gelatin silver print, 16 x 20 in.
Gift of Ernest Pomerantz and Marie Brenner, 2017.25.145



◀ Kevin Beasley

American, born 1985

If I was standing alone I wouldn't stand it at all, 2017

House dresses, kaftans, t-shirts, du-rags, resin,
99 ¾ x 53 x 33 in. (253.4 x 134.6 x 83.8 cm)

Purchased with funds provided by The Brown
Foundation Contemporary Art Acquisition Fund,
2018.1

Martine Syms

American, born 1988

Laughing Gas (full installation includes *SHE MAD: Laughing*
Gas, *Bertha Cut-out*, and *IS YOU IS OR IS YOU AIN'T*), 2016

4-channel video installation, wall painting, laser-cut acrylic,
artist's clothes, *SHE MAD: Laughing Gas*: 6:59 minute loop,
IS YOU IS OR IS YOU AIN'T: h. 63 ½ in.; w. 168 ½ in.,

Bertha Cut-out: h. 96 in.; w. 48 in.

Purchased with The Brown Foundation Contemporary Art
Acquisition Fund, 2018.2



◀ Terrell James
American, born 1955
The Game, 2015
Oil on canvas, 66 x 66 in. (167.6 x 167.6 cm)
Purchased with funds provided by The Brown
Foundation Contemporary Art Acquisition Fund, 2018.3

John Alexander
American, born 1945
Queen for a Day, 1986
Lithograph, 48 x 37 in. (121.9 x 94 cm)
Gift of Bill and Sue Sue Bounds in Honor of Tom Spicer, 2017.23.1

James Surls
American, born 1943
Cut Hand, Hurt Eye, 1981
Monotype, 79 x 43 in. (200.7 x 109.2 cm)
Gift of Bill and Sue Sue Bounds in Honor of Tom Spicer, 2017.23.3

LATIN AMERICAN ART

Artist unknown
Mexico
San Antonio Retablo, 19th century
Oil on tin, 10 x 7 in.
Gift of Henry Willard Lende Jr.,
2017.16.1

Artist unknown
Oaxaca, Mexico
Niche with Virgin, 20th century
Wood, paper, 12 x 6.5 in.
Gift of Henry Willard Lende Jr.,
2017.16.2

Artist unknown
Mexico
Ex-voto to Virgen del Refugio, 19th century
Oil on tin, 10 x 7 in.
Gift of Henry Willard Lende Jr.,
2017.16.3

Artist unknown, Signed: Fernandez
Mexico
Ex-voto to Saint Ann, 1909
Oil on tin
Gift of Henry Willard Lende Jr.,
2017.16.4

Artist unknown
Mexico
Ex-voto to Señor Sepultado de San Felipe, 1949
Oil on wood, 12 x 16 in.
Gift of Henry Willard Lende Jr.,
2017.16.5

Teodora Blanco
Mexican, 1928–1980
Nativity Set, 20th century
Clay, 3 x 4 in.; 7 x 3 in.; 7 x 5 in.
Gift of Henry Willard Lende Jr.,
2017.16.6

Artist Unknown
Zaculapa, Guerrero, Mexico
Zaculapa Bull, 2nd half of 20th century
Fired clay, 8 x 10 in.
Gift of Henry Willard Lende Jr., 2017.16.7



Artist unknown
Guatemalan
Bastón Finial, 19th century
Silver, 9 x 8 ½ x 2 ⅝ in. (22.9 x 21.6 x 6.7 cm)
Gift of Elizabeth and Robert Lende, 2018.8.1

Artist unknown
Guatemalan
Necklace with Charms, ca. 1910
Silver with onyx stone, l. 26 in. (66 cm)
Gift of Elizabeth and Robert Lende,
2018.8.2

Artists unknown
Peruvian
Chimú Huacos, Chancay, Lambayeque, and Moche Vessels, 1300–1532
Black-glaze pottery and red clay ceramic, dimensions vary
Gift of C. Brian Kesse, Lizann Kesse, and Michael K. Fox, in memory of C.H. “Hank” Kesse and Margaret “Tiny” Haege-lin Kesse,
2018.9.1-26

Artist unknown
Guatemalan
Vessels, 10th–early 16th century
Black glaze pottery and red clay ceramic,
dimensions variable
Gift of Henry Willard Lende Jr., 2018.10.1-7

▲ Artist unknown
New Spain
Charger, late 18th century
Glazed ceramic, h. 3 in. (7.6 cm) x w. 20 in. (50.8 cm);
1 ½ in. (rim of charger)
Gift of Klaus and Mary Schilling, 2017.20

Loans to and from the Collection

By sharing our holdings SAMA takes an active part in the international museum community and extends the reputation of its collection. Similarly, the Museum brings the world to San Antonio, borrowing important works or art that enrich the lives of our visitors.



Diego Rivera, Mexican, 1886–1957, *The Seventh of November, Moscow, 1928*, Oil on canvas, h. 26 ¼ in. (67.9cm); w. 31 ¼ in. (79.4 cm), Gift of Laurence S. Rockefeller, 99.9.4

SAMA LOANED 43 WORKS TO

Short Term

Institute of Contemporary Arts, Boston, MA • Museo Mural Diego Rivera, Frida Kahlo, Instituto Nacional de Bellas Artes (INBA), Mexico City • McNay Art Museum, San Antonio, TX • Texas A&M Forsyth Galleries, College Station, TX • Witte Museum, San Antonio, TX

Long Term

Bob Bullock Texas State History Museum, Austin, TX • CPS Data Center, San Antonio, TX • Umlauf Sculpture Garden, Austin, TX • University of Texas Health Science Center, San Antonio, TX

184 WORKS WERE LOANED TO SAMA FROM

American Numismatic Society, New York, NY • Autry Museum, Los Angeles, CA • Banamex Collection, Mexico City • Benson Library UT Austin, TX • Brooklyn Museum of Art, NY • Cleveland Art Museum, Ohio • Coates Library Trinity University, San Antonio, TX • Cushing Memorial Library A&M, College Station, TX • Denver Art Museum, CO • Fundación Lázaro Galdiano, Madrid • Houston Museum of Natural Science, TX • Thomas H. and Diane Demell Jacobsen, PhD Foundation, Saint Louis, MO • The J. Paul Getty Museum, Los Angeles, CA • McNay Art Museum, San Antonio, TX • Meadows Museum, Dallas, TX • MFA Boston, MA • MFA Houston, TX • Museo Arocena, Madrid • Museo Cerralbo, Madrid • Museo de Guadalupe, Instituto Nacional de Antropología e Historia (INAH), Zacatecas, Mexico • Museo de Historia Mexicana, Monterrey, Mexico • Museo del Romanticismo, Madrid • Museo Franz Mayer, Mexico City • Museo Nacional Centro de Arte, Reina Soñía, Madrid • Museo Nacional de Arte, INBA, Mexico City • Museo Nacional del Virreinato, INAH, Tepotzotlán, Mexico • Museo Regional de Querétaro, INAH, Querétaro, Mexico • Museo Sorolla, Madrid • Museo Soumaya, Mexico City • Museo Thyssen-Bornemisza, Madrid • Old Spanish Missions, San Antonio, TX • Penn Museum, Philadelphia, PA • Private Collections • The Prado Museum, Madrid • Real Academia de Bellas Artes de San Fernando, Madrid • Templo de Santa Rosa Viterbo, Querétaro, Mexico • Virginia Museum of Fine Arts, Richmond, VA • Wadsworth Atheneum, Hartford, CT • The Witte Museum, San Antonio, TX



Volunteering & Staffing



Dedicated, knowledgeable volunteers of all ages and walks of life contribute their time, talent, and passion for art to bring SAMA's collections and programming to life. The Museum is grateful to every one of them.

Volunteers

DOCENTS

Docent Officers: Suzanne Yarbrough (President), Geoff Leech (Vice-President), Anne Hardinge (Secretary), Diana Schraub (Treasurer)

Nanette Allen, Andrea Almond, Loreen Alvarez Browne, Rita Argentino Gorgazzi, Richard Banasau, Nancy Banks, Beverly Baucum, Joanne Baust, Tracy Biediger, Sandra Blake, Marty Bock, Margot Bosch, Maria Brandenburg, Lea Brogan, Karen Cabral, Kati Campbell, Elizabeth Card, Kellis Chandler, Joanna Coffey, John Cornell, Aida Cragnoilino, Ellie de Guzman, Elisa Denham, Joe Dondero, Judith Ely, Alexandra Escobedo, Felicia Esparza, Lori Espinoza, Anna Falkenberg, Fernando Feliciano, Melba Fisher, Jesus Garcia, Kiki Gay, Norma Gómez-Pérez, Iris Gonzalez, Anita Guajardo, Deborah Hanus, Molly Hefner, CoCo Hodgkinson, Mary Hogan, Roger Huff, Joyce Hyde, Carolyn Jennings, Nina Jones, Debra Koenig, Vivian Kraft, Rosario Laird, Alejandra Lamprea, Barbara Leidwanger, Jim Letchworth, Peggy Love, Fred Loxsom, Peggy Luna, Walt Magnus, Donna Marple, Gail Marsch,

Ann McConnell, Phyllis McKenzie, Mica Meadow, Ann Meyer, Connie Montoya, Laura Nikas, Susanne O'Brien, Lois Ord, Daria Outhwaite, Migdalia Penaloza, Bob Persellin, Xitlali Ramos, Lea Reedy, Yolanda Reyes, Cecilia Roger, Estela Royal, CheriRubenstein, Ruben Saenz, Margaret Schellenberg, Milinda Schwab, Caryl Shander, Rasa Silenas, Raul Solis, Katie Sutcliffe Becker, Jill Torbert, Jose Trabal, Laura Uzdavines, Melissa Varner, Colleen Yarbrough

DOCENT EMERITI

Eva Balcazar, Ken Bashore, Martha Bock, Maxine Dulany, Helen Hausman, Fleurette House, Toni Jackson, Elizabeth Johnson, Maria Jordan, John Lindquist, Maria Mancini-Walsh, Bobbie Martin, Pat McManus, Rindy McNicholas, Molly Nunnally, June Sheffield, Lily Skinner, Marie Ann Smith, Mary Carmen Sordo, Dorothy Vargas, Arleen West, Elizabeth Westbury, Flora Wilber

INTERNS

Megan Alejos, Grace Apple, Hector Barbosa, Cynthia Barrientes, Barbara Bush, Merritt Chilton, Valerie Diaz, Danielle Garza, Rebekah Guajardo, Tera Moellendor, Sealia Montalvo, Daniela Montufar, Amanda Ortiz, JaQuan Owen, Ashton Rogers, Josephine Tenorio

VISITOR SERVICES VOLUNTEERS

Laird Ingham, Steve Hahn, Carolyn Jennings, Will Lyn, Shirlene Harris

NATIONAL CHARITY LEAGUE

Jennifer Allison, Tayla Allison, April Barnes, Isabel Barnes, Brooke Bremer, Kate Bremer, Allison Burkey, Ella Burkey, Amber Canseco, Lilly Kate Clein, Toby Clein, Ester Dabbous, Suzanne Dabbous, Alexa Davis, Laini Davis, Paige Davis, Caroline Decherd, Francine Decherd, Lucy Decherd, Caroline Delmer, Jane Delmer, Lindsey Dillon, Berie Downing, Carolyn Downing, Elizabeth Downing, Erin Drawert, Jenna Drawert, Katherine Drawert, Taylor Drawert, Ella Furst, Tifini Furst, Ela Gancayco, Emma Gentry, Ana Greenberg, Nicole Greenberg, Claire Gunter, Nancy Gunter, Kathy Kelleher, Molly Kelleher, Lila Kelley, Manda Kelley, Brook Kerby, Cynthia Kerby, The Kuerner Family, Tatum Kiselis, Brumlette Labatt, Raven Labatt, Caitlin Martinez, Annette Mickler, Emma Mickler, Nancy Mickler, Addison Miller, Carson Miller, Leslie Miller, Mia Miller, Michelle Miller, Mikaela Miller, Rachel Miller, Reune Miller, Juliana Molina, Lupita Molina, Emily Noble, Sharon Noble, Callie Oden, Kasey Oden, Darden Page, Laura Page, Lucy Peveto, Gabriella Phillips, Vickie Phillips, Lauren Ray, Lisa Ray, Julianna Rendon & Family, Linda Saver, Caryl Shander, Beth Welsh, Jaquelyn Welsh, Claire Williams, Meghan Williams, Olivia Zachary

MUSEUM COLLEGIANS

Paris Negrete, Caitlin Martinez, Natalie Curran, Lauren Lazik, Hector Barbosa, Victoria Mihalik, Olivia Siskey, Naomi Ruiz, Katherine Reeves, Ellie Falcon, Madeline Hanna

MUSEUM TEENS

Kalle Duncan, Henry McClure, Kathleen Torgerson, Diego Gonzalez

TEXAS A&M UNIVERSITY SAN ANTONIO EARLY CHILDHOOD DEPARTMENT VOLUNTEERS

Karley A. Adlong, Jasmine Arguello, Shelley Armentrout, Mercedes Ayala, Cynthia Barrientes, Clarissa Bell, Krysten Briseno, Audrey Brister, Krystina Butler, Amy Camacho, Luz M. Cano, Erika Castro, Crystal R. Cazares, Belen Cerna, Destiny S. Cervantes, Gabriella R. Cortez, Paola Cosme Ramos, Crystal Cousert, Brittany Davis, Amber Delgado, Jasmine R. Delgado, Monique Delgado, Amanda M. Denman, Alma Diaz, April R. Edwards, Meagan Elkins, Victoria Elle Escobedo, Britney Esparza, Naomi Esparza, Valeria Felix, Suzette Fleminster, Cristian Garcia, Sania Garcia, Cecilia Garza, Jasmine Garza, Amber Garza-DeLeon, Brianna E. Gomez, Ashley R. Gonzalez, Andrea N. Guerra, Joseph Gutierrez, Kylie Geramita, Laraysha Hall, Jennifer Hernandez, Luis Hernandez, Maryann Herrera, Miranda G. Hildenbrand, Shelbi Hooten, Samantha Hughes, Sharon Jeffreys, Kara Jones, Luciana K. Klepatz, Denisse Labra, Lisa Laffin, Bianca Lemaster, Angela London, Jennifer Lopez, Sabrina R. Lopez, Sarah N. Lopez, Raquel Lott, Destiny Luna, Sarah Luther, Marissa Maldonado Martinez, Tina Marie Martinez, Cassandra Mancha, Alyssa Manzanares, Ashley Martinez, Jessica Martinez, Jestiny A Martinez, Karen Martinez, Lauren L. Martinez, Sophia Martinez, Blythe Matheny, Trent R. Mendonsa, Anna M. Mercado, Juliet Mojarro, Reginald Moore, Daniela Munoz, Broghan Moy, Erica Noriega, Estela Olivarez, Korina Olivo, Ashley E. Oneal, Christina Ortiz, Sabrina Oviedo, Rene Paez, Bianca Palacio, Jocelyn J. Palomares, Michelle R. Pamplin, Adriana Elaine Parra, Kaitlin Peaveler, Stephanie Pedraza, Briana Perez, Brittany Priour, Kelsey Quintanilla, Davina Quintero, Marisa Reyes, Kelsey F. Reynolds, Megan N. Riojas, Vanessa M. Rios, Natalie Rizo, Toni F. Rizo, Alvin Roane, Amanda Rodriguez, Shelby Rodriguez, Baleigh Romo, Joey Sanchez, Belsy San Miguel, Genesis Segura-Herrera, Adrienne Sibaja, Martisee Silva, Ashely Silvas, Maricruz Solis-Cazares, Amanda Taylor, Delazan Trevino, Nicole Turner, Santiago Urdiales, Jasmine Valdivia, Holly Villarreal, Hillary Vincent, Victoria Ward, Katarina Wehmeyer, Carmen Whitehead, Kevin Williams, Priscilla Zamora, Elizabeth Zanfagna-Ratliff, Karina Zuno

OFFICE OF THE DIRECTOR

Katherine Crawford Luber, PhD, *The Kelso Director*

Laura Soto, *Assistant Director*

Morgan Weber, *Executive Assistant to the Director*

CURATORS

William Keyse Rudolph, PhD, *Chief Curator and Marie and Hugh Halff Curator of American and European Art*

Marion Oettinger Jr., PhD, *Curator Emeritus of Latin American Art*

Jessica Powers, PhD, *Gilbert M. Denman Jr. Curator of Art of the Ancient Mediterranean World*

Emily J. Sano, PhD, *Coates-Cowden-Brown Senior Advisor for Asian Art*

Michelle Rich, PhD, *Andrew W. Mellon Postdoctoral Curatorial Fellow*

Suzanne Weaver, *Brown Foundation Curator of Modern and Contemporary Art*

Shawn Yuan, *Assistant Curator of Asian Art*

Lana Shafer Meador, *Curatorial Associate*

Gabriela Gámez, *Curatorial Assistant*

MEMBERSHIP AND DEVELOPMENT

Mary Burch, *Chief Development Officer*

Albert Carmona, *Events Manager*

Erica E. Duncan, *Membership Manager*

Valentina Gomez-Garcia, *Development Data Entry Clerk*

Ali Macklin, *Development Assistant*

MARKETING AND PUBLIC RELATIONS

Cary Marriott, *Chief Engagement Officer*

Tatiana Herrera-Schneider, *Director of Marketing*

Betsy Beckmann, *Writer/Editor*

Emilie Dujour, *Communications Manager*

EDUCATION

Noël Bella Merriam, *AT&T Director of Education*

Tripp Cardiff, *Docent Program Manager*

Leslie Chasnoff, *Public Programs Manager*

Carrie Avery, *Teacher & School Programs Manager*

Robert Langston, *Coordinator of Teacher and Community Engagement*

Chris Torgerson, *Volunteer and Tour Coordinator and Museum Educator**

COLLECTIONS

Kia Dorman, *Associate Registrar*

Heather S. Fulton, *Associate Registrar*

EXHIBITS

Tim Foerster, *Director of Exhibits*

Rob Bishop, *Art Preparator*

Gabriel Ewald, *Carpenter/Art Preparator*

Jason Kirkland, *Art Preparator/Lighting Specialist*

Eric Mathis, *Carpenter/Art Preparator*

FINANCE & ADMINISTRATION

Jeannie Frazier, *Chief Financial Officer*

Lisa Tapp, *Controller*

Shaney Proske, *Accountant*

Kimberly Martinez, *Payroll/Accounting Clerk*

Elda Martinez, *Chief People Officer*

Caitlin Brown-Clancy, *Manager of Retail Operations*

Patti Gonzalez, *Assistant Store Manager*

Martie Estrada, *Human Resources Associate*

Kelly Vicencio, *Accounts Payable Clerk*

FACILITIES & SECURITY

Pamela Hannah, *Chief Operations Officer*

Renée Talamantez, *Operations Project Manager*

Myron Granvle, *Manager of Protective Services*

Scott Sanders, *Operations Manager*

Chris Rushing, *Mechanic Supervisor*

Edward Cantu, *Custodian Supervisor*

Robert Esparza, *Protective Services Supervisor*

Bill Lakey, *Protective Services Supervisor*

Crystal Luderus, *Protective Services Supervisor*

*indicates part-time staff

2017–2018 Board of Trustees

OFFICERS

Marie Halff, *Chair*
Edward A. Hart, *ViceChair*
Claudia Huntington, *ViceChair*
Gregg Muenster, *Secretary*



Board members Rosario Laird and Katherine McAllen with the 12th Marquesa and Marqués de Aguayo, Marta and Ramón de la Plaza y Bringas, direct descendants of the Spanish Marqués who was integral to San Antonio's founding, at the opening of *San Antonio 1718: Art from Viceregal Mexico*

VOTING TRUSTEES

Martha S. Avant
Jorge del Alamo
Dale F. Dorn
John Eadie
Thomas Edson
Barbara B. Gentry
Claire Golden
Chave Gonzaba
Marie Halff
Edward A. Hart
Rose Marie Hendry
Christian Herff
Cecilia E. Herrera
Karen H. Herrmann
Candace Humphreys
Rosario Laird
Kim Lewis
Martha Lopez
Jane H. Macon
Katherine Moore McAllen
Bruce Mitchell
Gregg Muenster
Toby O'Connor
William Dean Rasco
Roxana M. Richardson
Corinna Richter
Elizabeth McAllen Roberts
William Scanlan Jr.
A. Kate Sheerin
Beth Smith
Nancy Steves
Ruth Eilene Sullivan
Sidney Swearingen
Rich Walsh
Mark E. Watson III
W. Richey Wyatt
Karen Lee Zachry

LIFE TRUSTEES

Lenora P. Brown
Lila Cockrell
Emory Hamilton
Karen Hixon
Claudia Huntington, *Vice Chair*
Peggy Mays
Banks M. Smith
Patsy Steves*

HONORARY TRUSTEES

Margery Block
Anthony Edwards
Richard Huber
Roberta Huber
Harriet Kelley
Edith McAllister*
Henry R. Muñoz III
Nelson A. Rockefeller Jr.
Suzanne Ware
Linda Whitacre

EX-OFFICIO TRUSTEES

Katherine C. Luber, PhD

* deceased



Supporting & Giving

Thanks to the generosity of those listed below, the San Antonio Museum of Art ended the fiscal year financially healthy.

We gratefully acknowledge these members and donors who support our mission to enrich lives through exceptional experiences with art.

MEMBERSHIP

October 1, 2017–September 30, 2018

CHAIRMAN'S CIRCLE (\$100,000)

Mrs. Karen Hixon
Ms. Claudia Huntington and Mr. Marshall Miller Jr.
Lt. Col. Robert E. Kelso
Ms. Kim Lewis
Peggy and Lowry Mays

DIRECTOR'S CIRCLE (\$25,000)

Mrs. Marie Halff
Mr. and Mrs. Frederic Hamilton
Mrs. Ruth Eilene Sullivan

LEADER'S CIRCLE (\$10,000)

Mrs. Walter F. Brown
Mr. Charles Butt
Mr. and Mrs. John L. Hendry III
Mr. and Mrs. Toby O'Connor

BENEFACTOR'S CIRCLE (\$5,000)

Mr. and Mrs. Lee M. Bass
Mr. and Mrs. Charles Bowden
Mr. and Mrs. James F. Dicke II
Mr. and Mrs. Dale F. Dorn
Mr. Thomas H. Edson
Mr. H. Rugeley Ferguson
Mr. and Mrs. Ronald J. Herrmann
Mr. and Mrs. Michael Humphreys
Mrs. Eva Garza Lagüera
Mrs. Jane H. Macon
Ms. Dorothea C. Oppenheimer
Corinna and J.B. Richter
Mr. and Mrs. William A. Scanlan Jr.
Mrs. Patsy Steves*

PHILANTHROPIST'S CIRCLE (\$2,500)

Dr. and Mrs. Wilbur S. Avant Jr.
Mr. and Mrs. William D. Balthrope
Ms. Cassandra Carr
Mr. and Mrs. Jorge del Alamo
Dr. and Mrs. Charles H. Du Val
Mr. and Mrs. John D. Eadie
Mr. and Mrs. C. Michael Gentry
Mrs. Claire Golden
Dr. and Mrs. William Gonzaba
Mr. and Mrs. James W. Gorman Jr.
Ms. Helen K. Groves
Mr. and Mrs. Edward Hart
Mr. and Mrs. Christian Herff
Mr. and Mrs. Frank Herrera
Dr. and Mrs. Risto E. Hurme
Dr. and Mrs. John R. Jinkins
Mr. Chris Karcher and Ms. Karen Keach
Mr. and Mrs. Darrell Kirksey
Mrs. Rosario Laird
Dr. and Mrs. Fernando Lopez
Dr. Katherine McAllen and
Mr. James A. McAllen
Mrs. Edith McAllister*
Mr. and Mrs. Stephen D. McCreary Jr.
Mr. and Mrs. Brian Meuth
Mr. and Mrs. Bruce Mitchell
Mr. and Mrs. Gregg Muenster
Col. and Mrs. William Dean Rasco
Mr. and Mrs. Bruce C. Richardson Jr.
Mr. and Mrs. Barry C. Roberts
Mr. Nelson A. Rockefeller Jr.
Mr. and Mrs. Rick Schimpff
Ms. A. Kate Sheerin
Mr. and Mrs. Banks M. Smith
Mr. and Mrs. Forrester M. Smith
Mr. and Mrs. Edward Steves

Ms. Mary P. Stumberg
Ms. Sidney Swearingen and
Dr. Stephen F. Wood
Mr. and Mrs. Rich Walsh
Mr. and Mrs. Mark E. Watson III
Mr. and Mrs. Edward E. Whitacre Jr.
Mr. and Mrs. George M. Williams
Mr. and Mrs. W. Richey Wyatt
Mr. and Mrs. David Zachry

ART SOCIETY CIRCLE (\$1,000)

Lexie and Rowan Altgelt
Mr. and Mrs. Carlos Alvarez
Mr. and Mrs. Inigo Arzac
Mr. and Mrs. Robert A. Anderson
Ms. Tracy Avery
Mr. and Mrs. Morton W. Baird II
Drs. Maryan and Otis Baskin
Ms. Jackie Beretta and
Mr. Benjamin Rodriguez
Ms. Margery L. Block
Ms. Margaret Corning Boldrick
Mr. and Mrs. Michael J. Bolner
Dr. Lois L. Bready and
Dr. Joseph R. Holahan
Mr. and Mrs. Bradford R. Breuer
Kimberly and Gary Britton
Mr. and Mrs. Thomas O. Brundage
Mary and Brian Burch
Mr. and Mrs. Robert B. Cadwallader
Dr. and Mrs. Ronald K. Calgaard
Mr. and Mrs. Richard Calvert
Brig. Gen. (Ret.) David M. Cannan
Mr. and Mrs. Michael Card
Mr. Chris Carson
Mr. and Mrs. Charles E. Cheever Jr.
Mrs. Emilie K. Chenault
Mr. Rodolfo Choperena
Ms. Barbara Christian Chumney
Mr. and Mrs. Craig Clayton
Mr. and Mrs. Stephen Collins
Mr. Edward E. Collins III
Mr. William R. Crow, Jr.
Mr. and Mrs. William E. Dreyer
Mrs. Jane Drought
Mr. and Mrs. Brooke F. Dudley
Mr. Frank Fichtel and Dr. Lisa Fichtel
Ms. Caroline Forgason
Mr. Charles A. Forster
Ms. Jeannie M. Frazier
Mr. and Mrs. Mark Gale
Mr. and Mrs. Steve Gillis
Mr. and Mrs. Frederick C. Groos Jr.
Mr. and Mrs. Harry A. Halff
Mrs. Friedrich Hanau-Schaumburg
Mr. and Mrs. Houston H. Harte
Ms. Linda K. Haseloff
Mr. and Mrs. James L. Hayne
Mr. Max Hensley and
Ms. Billinda Wilkinson
Mr. Christopher C. Hill
Dr. and Mrs. Bruce G. Hopkins
Mrs. Erika J. Ivanyi and
Mr. Matthias Schubnell
Miki and Sebastian Izzard
Mr. and Mrs. Timothy T. Jenison
Dr. and Mrs. Robert L. Jones
Rev. and Mrs. Raymond E. Judd Jr.
Ms. Dianne Kamolsri
Mr. and Mrs. Patrick J. Kennedy
Mr. and Mrs. Patrick J. Kennedy Jr.
Mr. and Mrs. Greg King
Ms. Rosemary Kowalski
Ms. Barbara C. Kyse
Mr. and Mrs. Blair Labatt
Mr. Louis J. Lamm Jr.
Mr. and Mrs. Robert R. Lende



Mr. James R. Letchworth and
Mr. Kirk C. Swanson
Mrs. Ingrid P. Lewis
Mr. and Mrs. Lance Lubel
Dr. and Mrs. M. Philip Luber
Mrs. Alice Lynch and Mr. Sam Norwood
Dr. and Mrs. Roger Lyons
Mr. William Maney and Mr. Michael Weil
Ms. Mary S. Marmion
Mr. Paul Martin
Mr. and Mrs. Raymond McClellan
Mr. and Mrs. Red McCombs
Mr. and Mrs. Theodore F. Meyer
Mr. Fred Middleton
Mr. Douglas W. Miller
Mr. and Mrs. Lewis J. Moorman
Mrs. Judith N. Morton
Ms. Judé C. Mueller
Mr. John E. Newman Jr.
Mr. and Mrs. Allan G. Paterson Jr.
Drs. Robert and Diane Persellin
Mr. and Mrs. Derek Read
Mr. Epitacio R. Reséndez V and
Hunter Henke
Ms. Amy Rhodes

Ms. Laura M. Richards
Mr. and Mrs. Ron Ripps
Mr. and Mrs. Jeffrey D. Ryan
Emily Sano and Gilson Riecken
Mr. and Mrs. Robert A. Shivers
Mr. Conrad Sterrett
Mr. and Mrs. Donald Steward
Dr. Tyson E. Becker and Mrs. Katie
M. Sutcliffe Becker
Mr. Patrick H. Swearingen Jr.
Ms. Melissa Varner
Ms. Courtney Walker
Mr. Charles R. Walker
Mr. and Mrs. Mark E. Watson Jr.
Ms. Kittie West
Mr. and Mrs. Jim Williams
Dr. Patricia Winter-Valdez and
Dr. Daniel C. Valdez
Mr. and Mrs. Thomas A. Wirth
Mr. C. Thomas Wright
Mr. and Mrs. Carl E. Wulfe
Dr. and Mrs. Douglas L. Young
Mr. and Mrs. Bartell Zachry

*deceased

PATRON (\$500)

Dr. and Mrs. Sabas F. Abuabara
Dr. Clifford N. Alprin and Dr. Lindsey M.
Hawkins-Alprin
Ms. Lindsay Armstrong
Mr. Kevin W. Baker
Dr. Phillip B. Balleza
Dr. George Beddingfield
Mr. Robert W. Boerner
Dr. Cheri Carter-Rubenstein
Ms. Tsuichun R. Chang
Mrs. Lila Cockrell
Mr. and Mrs. Carlos Contreras
Mr. and Mrs. John Cornell
Sister Kathleen Coughlin
Mrs. Flora Crichton
Mr. and Mrs. Robert R. Dale
Mr. Thomas L. Dashiell
Mr. and Mrs. Randall Espinoza
Mr. and Mrs. Edward Faleski
Ms. Bonnie L. Flake and Dr. Francisco
García-Treto
Mrs. Magdalene Flannery
Judi Free and Paul Hamborg
Ms. Laura I. Gates
Ms. Laura R. Gates
Mrs. Mari Glamser-Samuel
Mr. and Mrs. John Hayes
Dr. and Mrs. William L. Henrich
Mr. Chris Hernandez and
Ms. Michelle Maloney
Mr. David Brian Holland
Dr. Edward E. Horvath and
Dr. Lynn L. Horvath
Dr. Obinna G. Isiguzo
Mr. and Mrs. John Korbell Sr.
Dr. and Mrs. Victor Lam
Mrs. Ingrid Lee
Ms. Audrey Mangold
Cary Marriott and Jim Taylor
Ms. Debbie Martinez
Mr. and Mrs. Gilbert Mathews
Mrs. Louella McCamish
Mr. Dana F. McGinnis
Mr. and Mrs. Tom Mengler
Drs. Blanca and Rodolfo Molina

Ms. Susan L. Mooberry and
Mr. Gregory M. Patterson
Mr. Adam Muhlig
Ms. Linda Nairn
Mr. and Mrs. Floyd R. Nation
Mr. and Mrs. John M. Oppenheimer
Mr. and Mrs. Jon M. Purdy
Mrs. Victoria A. Reed
Mr. and Mrs. B. Coleman Renick Jr.
Mrs. Iris Rubin
Mr. and Mrs. Lewis F. Russell Jr.
Scott Sanders and Isabel Garcia
Ms. Linda N. Seeligson
Dr. Alberto C. Serrano and
Dr. Reina Serrano
Ms. Rebecca Simmons
Mr. and Mrs. Jack J. Spector
Mrs. Elsie G. Steg
Mr. and Mrs. Robert E. Stevens
Teri and George Stieren
Dr. and Mrs. Karl Swann
Ms. Karen M. Thompson
Mr. and Mrs. Gary R. Walter
Mr. and Mrs. Donald E. Weber
Dr. and Mrs. Mark B. Weinstein

CORPORATE ART SOCIETY CIRCLE (\$1,000–\$2,500)

Argent Trust
Anne Zanikos Art Conservation
Bolner's Fiesta Products, Inc.
Christie's
ENTRUST Technology Consulting Services
Frost
Luther King Capital Management
Sendero Wealth Management

SMALL BUSINESS (\$500)

Lark Mason Associates Inc.
Roger Christian & Co.
Vogt Auction Galleries
Paloma Blanca Mexican Cuisine

UNIVERSITY PARTNERS

Alamo Colleges
Trinity University
University of the Incarnate Word

DONORS

October 1, 2017—September 30, 2018

\$500,000 - \$999,999

The Brown Foundation, Inc.
Estate of Gilbert M. Denman
Impetus Foundation

\$250,000 - \$499,999

City of San Antonio Department of Arts
& Culture
The Ewing Halsell Foundation

\$100,000 - \$249,000

Bank of America
Bank of America Charitable Foundation
Charles Butt Foundation
County of Bexar
Elizabeth Huth Coates Charitable
Foundation of 1992
Mr. and Mrs. Frederic Hamilton
Mrs. Marie Halff
Ms. Kim Lewis
Robert J. Kleberg, Jr. and Helen C.
Kleberg Foundation
Russell Hill Rogers Fund for the Arts

\$25,000 - \$99,999

Argo Group US
Betty Stieren Kelso Foundation
Mr. Charles Butt
The Capital Group Companies
Charitable Foundation
Dr. Robert R. Clemons
Mr. and Mrs. Samuel Dawson
Frost
Mr. and Mrs. Christopher Goldsbury Jr.
The Greehey Family Foundation
H-E-B
H-E-B Tournament of Champions
Charitable Trust
Mr. and Mrs. John L. Hendry III
Mrs. Karen Hixon
Mr. and Mrs. Michael Humphreys
Ms. Claudia Huntington and
Mr. Marshall Miller Jr.

Institute of Museum and Library Services
Mr. and Mrs. Robert R. Lende
Marquee Event Group, Inc.
Mary Kathryn Lynch Kurtz
Charitable Lead Trust
Mays Family Foundation
Mr. Dana F. McGinnis
National Endowment for the Arts
NuStar Energy
Corinna and J.B. Richter
Mr. and Mrs. Rick Schimpff
The USAA Foundation
Mr. and Mrs. Edward E. Whitacre Jr.

\$10,000 - \$24,999

AT&T, Inc.
BBVA Compass Foundation
Mr. and Mrs. Thomas O. Brundage
Faye L. and William L. Cowden Charitable
Foundation
F. B. Doane Foundation
Mrs. Lucille M. Duff
The Gambinus Company
Thomas Gilcrease Foundation
Dr. and Mrs. William Gonzaba
Ms. Helen K. Groves
Guido Bros. Construction Company
Mr. Max Hensley and
Ms. Billinda Wilkinson
Henry and Kyle Ferari Muñoz
Mr. and Mrs. Eric Foulz
Hotel Emma
Keller Henderson Interiors
Marcia & Otto Koehler Foundation
Ms. Susan C. Lewis
Dr. Katherine McAllen and Mr. James A.
McAllen
Kreager Mitchell, PLLC
Mission Restaurant Supply
Ms. Myfe W. Moore
Mr. and Mrs. Lewis J. Moorman
Mr. and Mrs. Lanham Napier
The St. Anthony Hotel
Sendero Wealth Management
Ms. A. Kate Sheerin

Mr. Larry Sheerin*
Muriel F. Siebert Foundation
The Smothers Foundation
Daniel J. Sullivan Family
Charitable Foundation
Peter Clifton Swenson 2006 Trust
Valero Energy Foundation
The Zachry Foundation
Roger L. and Laura D. Zeller
Charitable Foundation

*deceased

\$5,000 - \$9,999

Anonymous
Mr. and Mrs. Inigo Arzac
Bank of America - San Antonio
Ms. Becky Beaver
Carol Lee Jones Educational
and Cultural Fund
Mr. Thomas H. Edson
Gentry Family Fund of the
San Antonio Area Foundation
GMG Health Systems, LTD.
M.E. Hart Foundation
Herrmann Family Charitable
Foundation
The Jeffrey Horvitz Foundation
Jefferson Bank
Mrs. Rosario Laird
Dr. and Mrs. M. Philip Luber
McCombs Foundation
John Newman Family Charitable
Fund of the San Antonio Area
Foundation
The Nordan Trust
Mr. Andrew J. Novak
Mr. and Mrs. Toby O'Connor
The Harris K. and Lois G.
Oppenheimer Foundation
Orville Carr Associates
Mr. and Mrs. Bruce C. Richardson Jr.
Mr. and Mrs. Barry C. Roberts
The Steves Foundation
Dela W White Trust
Mr. and Mrs. David Zachry

\$2,500 - \$4,999

Argent Trust
Mr. and Mrs. Edward Badouh III
Kelli and Michael Cubeta
Mr. and Mrs. James Daniell
M. Gale & Associates, LLC
Mr. Bruce E. Grossman
Jack and Valerie Guenther Foundation
Mr. and Mrs. Christian Herff
Mr. and Mrs. Frank Herrera
Mr. and Mrs. Brad Jones
Mr. and Mrs. Michael Kiolbassa
Mr. Rick Liberto
Bobbie S. Martin
Mr. Mark Muecke
Mr. and Mrs. William B. Osborn III
Lorin and Forrest Runnels
Mr. and Mrs. Jeffrey D. Ryan
Mr. and Mrs. Banks M. Smith
Teri and George Stieren
Texas Commission on the Arts
Shannon and Jon Turner
Mr. and Mrs. Jim Williams
Mr. and Mrs. Thomas A. Wirth

\$1,000 - \$2,499

American Research Center in Egypt, Inc.
Ruth and Edward Austin Foundation
Dr. and Mrs. Wilbur S. Avant Jr.
Mr. and Mrs. Michael J. Bolner
Mrs. Elise Boyan
Phyllis and Jamie Browning
Capitol Chevrolet
Dr. Cheri Carter-Rubenstein
Dr. and Mrs. Alfonso Chiscano
Mr. and Mrs. Jorge del Alamo
Mr. and Mrs. Dale F. Dorn
Ms. Jane T. Drought
Ms. Judith Ely
ExxonMobil Foundation
Fidelity Charitable Gift Fund
Mr. and Mrs. Ted Flato
Flohr Family Foundation
Mr. Ross O. Garcia and
Ms. Mary Nelda Valadez

Estate of Laura I. Gates
Mr. and Mrs. C. Michael Gentry
Mr. Lukin T. Gilliland Jr.
Mrs. Claire Golden
The Gorman Foundation
Mr. Michael S. Guarino
Sarah E. Harte and John S. Gutzler Fund
Mr. Christopher C. Hill
Mr. and Mrs. Reagan Houston IV
Miki and Sebastian Izzard
J & M Rubin Foundation
Dr. Annie Labatt
Dr. and Mrs. Victor Lam
Las Amigas
The Lynch Foundation
Ms. Mary S. Marmion
Mauzé Construction
Mr. and Mrs. Marks Moore
Mrs. Judith N. Morton
ODL
The Parker Foundation, Inc.
Robinson Value Management, Ltd.
The Arch and Stella Rowan Foundation, Inc.
Mr. and Mrs. William A. Scanlan Jr.
Drs. Harry and Molly Shafer
Mr. and Mrs. Chase Smiley
Ms. Sidney Swearingen and Dr. Stephen F. Wood
Mr. and Mrs. Michael L. Sweeney
Mr. Robert Thrailkill
Mr. Anthony Trevino Jr.
Wells Fargo
Whataburger
Williams-Chadwick Family Charitable Fund
Mr. Patrick Williamson
Wortham Insurance and Risk Management
Mrs. Rita Binkley Worthy
Mr. and Mrs. Mark H. Wright





PRESENTS

SPAIN

500 YEARS OF

SPANISH PAINTING

FROM THE MUSEUM

Financials



THE SAN ANTONIO MUSEUM OF ART MEANS BUSINESS*

Produces an overall annual economic impact of **\$11,201,749**

Employs **82** full-time and **9** part-time staff members

Generates over **\$554,823** in state government revenue

Generates over **\$455,687** in local government revenue

Invested over **\$12** million since 2012 on capital-improvement projects using local contractors and suppliers

*Americans for the Arts Prosperity 5 Calculator

Audited Financial Statements

ASSETS	09/30/2018	09/30/2017
Cash and cash equivalents	4,449,997	4,581,534
Contributions, grants, and accounts receivable, net	3,348,950	2,865,782
Investments, at fair value	52,944,218	51,532,227
Inventory	114,755	110,219
Prepaid expenses and other assets	269,691	338,970
Land and fixed assets, net	21,681,772	22,138,591
TOTAL ASSETS	82,809,383	81,567,323

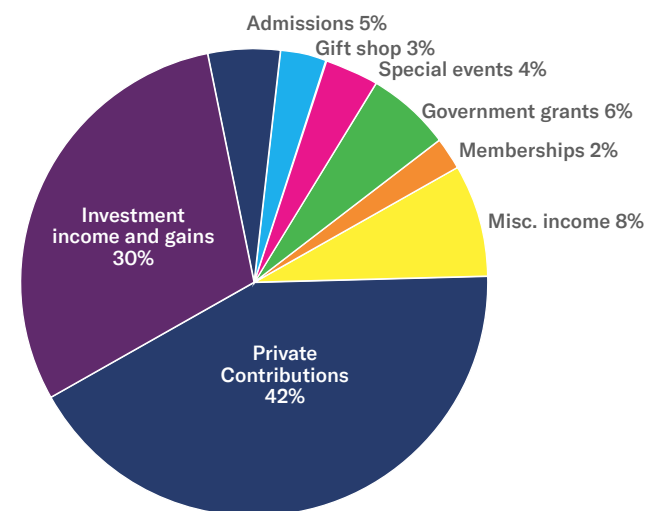
LIABILITIES & NET ASSETS

Accounts payable and accrued expenses	396,180	715,270
Deferred revenue	260,195	284,673
TOTAL LIABILITIES	656,375	999,943

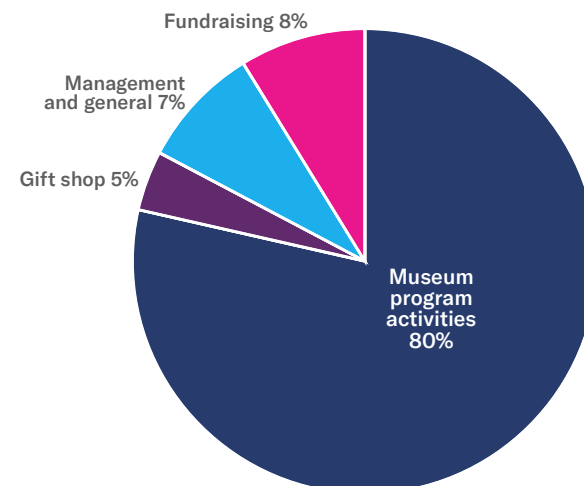
NET ASSETS-UNRESTRICTED

Operating	1,578,333	1,105,162
Investment in land and fixed assets	21,681,772	22,873,048
TOTAL UNRESTRICTED	23,260,105	22,978,210
Temporarily restricted	18,890,738	17,959,608
Permanently restricted	40,002,165	39,629,562
TOTAL NET ASSETS	82,153,008	80,567,380
TOTAL LIABILITIES AND NET ASSETS	82,809,383	81,567,323

REVENUES FY 2017



EXPENSES FY 2017



	Unrestricted	Temporarily Restricted	Permanently Restricted	FY2018	FY2017
REVENUES					
Government grants	347,000	757,000		1,104,000	1,336,900
Private sector contributions	1,808,618	2,818,091	367,540	4,994,249	4,044,592
Memberships	259,646			259,646	208,946
Admissions	665,476			665,476	343,288
Special events revenues (net of direct exp)	528,585			528,585	289,005
Investment income (net of direct exp)		600,419		600,419	344,471
Net gain on investments (realized/unrealized)		3,285,523		3,285,523	5,198,632
Gift shop and auxiliares	412,121			412,121	330,952
Rental income	97,409			97,409	95,328
Miscellaneous income	127,559			127,559	531,652
Gains on disposals	855,164			855,164	
Net assets released from restrictions for operations	6,524,840	(6,529,903)	5,063		
TOTAL REVENUES	11,626,418	931,130	372,603	12,930,151	12,723,766
EXPENSES					
PROGRAM					
Museum activities	8,679,626			8,679,626	7,334,563
Gift shop	531,371			531,371	433,656
Management and general	776,340			776,340	736,485
Fundraising	842,671			842,671	864,848
TOTAL EXPENSES	10,830,008			10,830,008	9,369,552
Changes in net assets before art collection items not capitalized	796,410	931,130	372,603	2,100,143	3,354,214
Art collection items purchased but not capitalized	(514,515)			(514,515)	(128,045)
Change in net assets	281,895	931,130	372,603	1,585,628	3,226,169
Net assets, beginning of year	22,978,210	17,959,608	39,629,562	80,567,380	77,341,211
Net assets, end of year	23,260,105	18,890,738	40,002,165	82,153,008	80,567,380



[CLICK ON IMAGE](#)



@ Casa de S.M. el Rey



San Antonio
Museum
of Art

2017–2018
Annual Report