

ACTIVITY BOOK



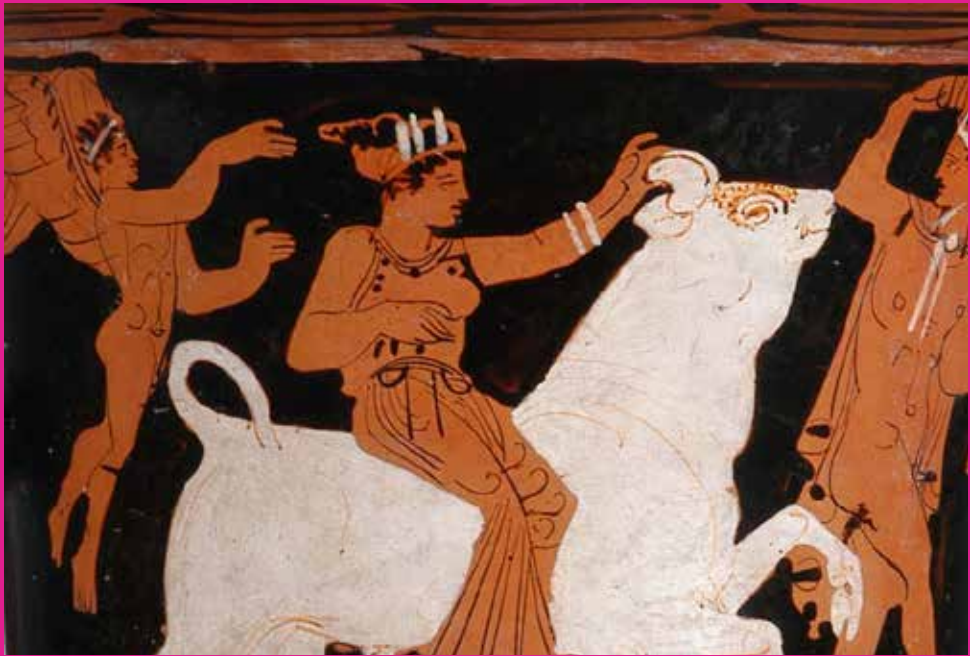
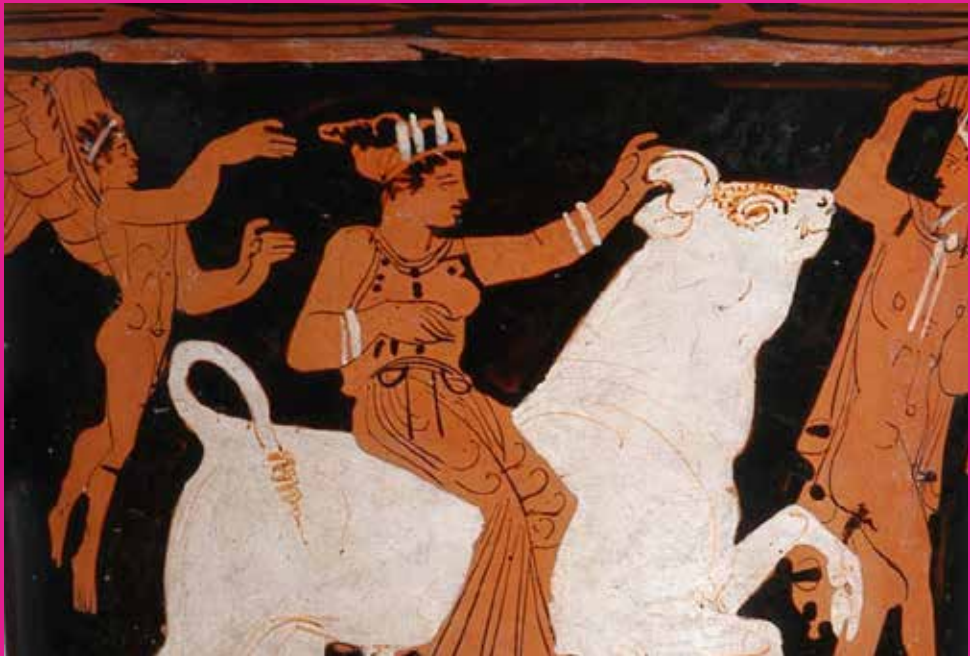
Help the clay doll get to the figurine through the maze.



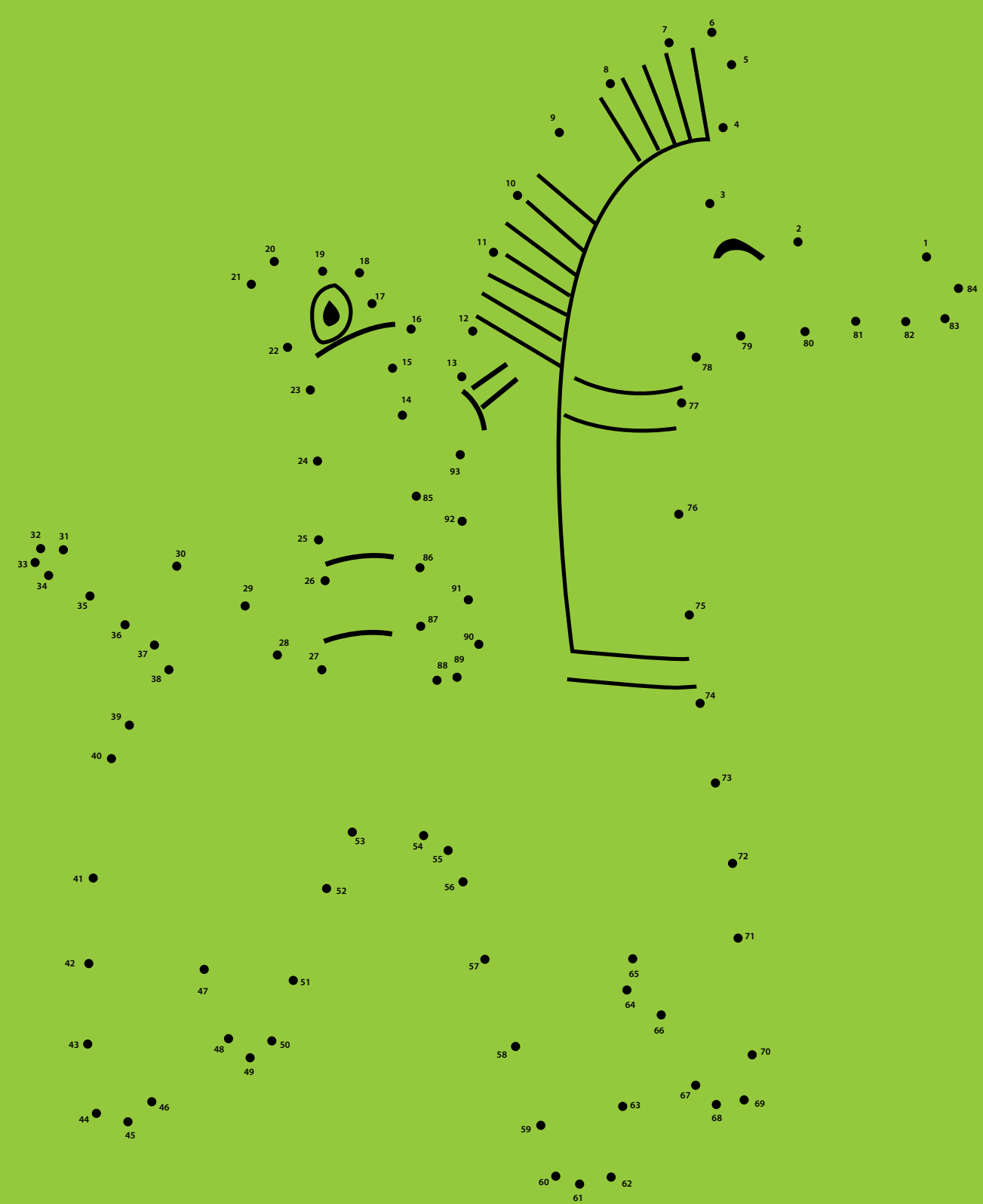
Draw the missing half of the figurine.



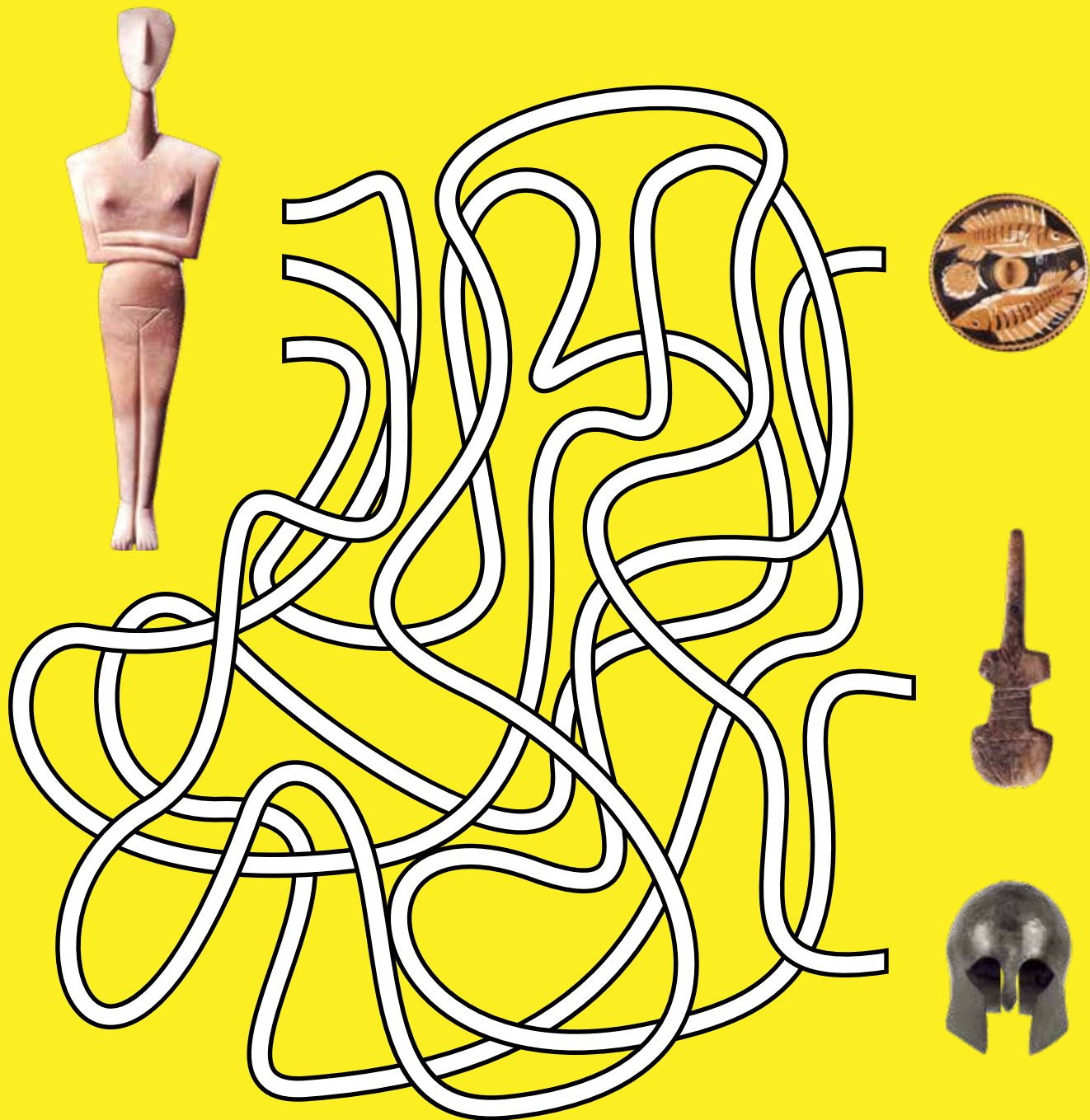
Spot the differences.



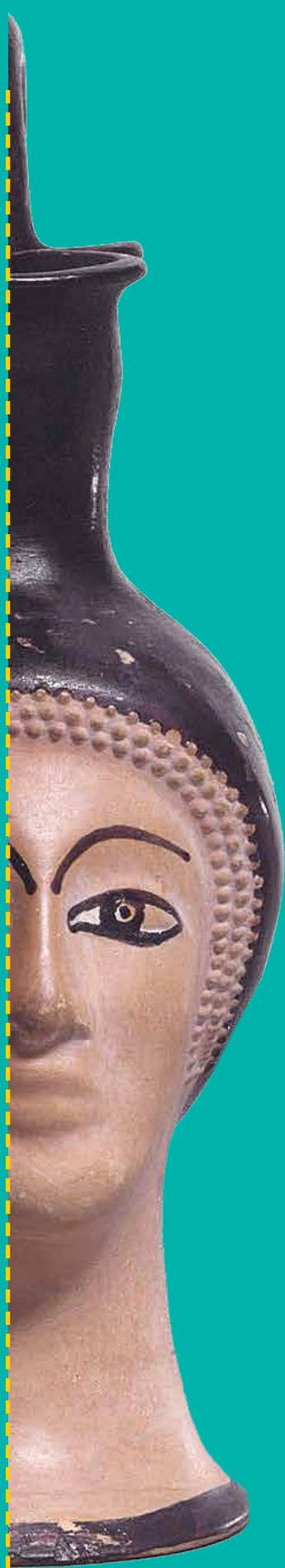
Connect the dots.



Help the figurine reach 1 of the 3 objects.



Draw the missing half of the figurine.



Draw your own vase.



Clay doll with moving arms and legs | approx. 490 BC



Clay vase in the form of a female head | ca 480 BC



Bronze votive figurine | 8th c. BC



Marble female figurine with folded arms | ca 2400



Mycenaean clay figurine | 1400-1200 BC



Red figure fish plate | 4th century BC



Red-figure calyx krater depicting the abduction of Europa by Zeus metamorphosed into a bull | 380 BC



Marble violin-shaped figurine | Early Cycladic Period (3200-2800 BC)

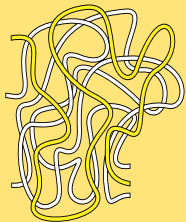


Terracotta figurine of a rider | 9th-8th century BC



Bronze helmet with holes for attaching the leather lining | late 7th - early 6th century BC

Activity Solutions





Clay vessel with lid decorated with four horses | 760–750 BC