

Deep Seated

6 | On Now



Artful Animals

10 | New & Noted



FALL | 2018

ARTNOW

SAN ANTONIO MUSEUM of ART



Anatomy of...

Aunt Billie (Billie Patterson Moore died in the school explosion in New London, Texas)

Where to Find It: Special Exhibition *Marilyn Lanfear: Material Memory*, Fourth Floor, East Tower,
August 24–November 11, 2018
Curator: Lana Meador, Curatorial Associate

Who is this?

It's the artist's Aunt Billie, her Uncle Clarence's first wife. Artist Marilyn Lanfear uses the history of her Texas family as subject matter, working from photographs and incorporating found objects collected over the years. This work is part of a triptych—*Uncle Clarence's Three Wives*.

What's Aunt Billie's story?

Aunt Billie is pictured in front of a new school built in the East Texas oil town of New London, where she lived in the 1930s. An undetected leak caused gas to build up beneath the school, resulting in a horrific explosion on March 18, 1937, that killed 295 teachers and students. That day Aunt Billie was visiting her sister, a teacher, and both women died. Within weeks, legislation mandated that odorous sulfur and hydrogen be added to natural gas for the early detection of leaks.

Above:
Marilyn Lanfear
American, born 1930
Uncle Clarence's Three Wives, triptych, detail: *Aunt Billie (Billie Patterson Moore died in the school explosion in New London, Texas)*, 2005–2007
Mother-of-pearl and plastic buttons on linen
Gift of Marilyn Lanfear, 2016.33.3.2.a-c
Photography by Ansen Seale



What's it made of?

Thousands of vintage mother-of-pearl buttons that the artist collected from antique shops and button vendors. Lanfear's body of work explores memory through materials. Her use of buttons suggests domesticity and "women's work"—themes that relate to the family narrative represented in the triptych.

How long did it take to sew all those buttons?

Creating the three large-scale button tapestries (each is nearly eight feet tall) took two years as a collaborative project. Thirty-seven volunteers helped Lanfear sort, wash, and sew the buttons onto linen panels. The collective nature of the work underscores the themes of community and family.

What does the text at the bottom say?

It's the title, but it also serves as a commemoration and suggests a narrative. In the artist's words: "I am a visual storyteller. Narrative is the moving force of my visual language with the history of my Texas family as the core."

KNOW MORE

Just for Members
Gallery Talk: Material Memory
with Lana Meador

Friday, September 21 | 6:30–7:30 p.m.
\$15 members | RSVP: samuseum.org/calendar

2017-2018
BOARD of TRUSTEES

VOTING TRUSTEES

Martha S. Avant
Jorge del Alamo
Dale F. Dorn
John Eadie
Thomas Edson
Barbara B. Gentry
Claire Golden
Chave Gonzaba
Marie Halff, Chair
Edward A. Hart, Vice Chair
Rose Marie Hendry
Christian Herff
Cecilia Elizondo Herrera
Karen H. Herrmann
Candace Humphreys
Rosario Laird
Kim Lewis
Martha Lopez
Jane H. Macon
Katherine Moore McAllen
Bruce Mitchell
Gregg Muenster, Secretary
Toby O'Connor
William Dean Rasco
Roxana M. Richardson
Corinna Richter
Elizabeth McAllen Roberts
William Scanlan Jr.
A. Kate Sheerin
Beth Smith
Nancy Steves
Ruth Eilene Sullivan
Sidney Swearingen
Rich Walsh
Mark E. Watson III
W. Richey Wyatt
Karen Lee Zachry

LIFE TRUSTEES

Lenora P. Brown
Lila Cockrell
Emory Hamilton
Karen Hixon
Claudia Huntington, Vice Chair
Peggy Mays
Banks M. Smith

HONORARY TRUSTEES

Margery Block
Anthony Edwards
Richard Huber
Roberta Huber
Harriet Kelley
Henry R. Muñoz III
Nelson A. Rockefeller Jr.
Suzanne Ware
Linda Whitacre

EX OFFICIO TRUSTEES

Katherine C. Luber, PhD



Table of Contents

4 Becoming John Marin: Modernist at Work
6 On Now: Harry Bertoia
7 Calendar
10 New & Noted
11 Up Next: Capturing the Moment
12 ArtScene
14 Keeping Up with Jones Avenue
15 Give & Join

From the Director

Dear Members,

I hope you’ve had a great summer—the Museum has. From the visit of the King and Queen of Spain to the overwhelming success of our *Spain* exhibition, and from the launch of our new—easier to use—website to the opening of our restaurant Tre Trattoria, the Museum is growing stronger and better with you in mind.

Please help us keep the momentum going: renew or upgrade your membership, donate to the Annual Fund, or join us at our next fundraiser, Destination: Maine (October 25), in celebration of our upcoming exhibition *Becoming John Marin: Modernist at Work* (p. 4).

Look inside to see what other great adventures in art we have coming this fall. And in October, during Museum Month, take advantage of your SAMA membership to get in free to all the other museums in the city.

Hope to see you soon in the galleries.

Katie

Katherine C. Luber, PhD
The Kelso Director

P.S. *Spain* closes on September 16. Come see it a second (or third, or fourth) time!



ON THE COVER: From the upcoming exhibition *Becoming John Marin: Modernist at Work* John Marin, American (Rutherford, New Jersey, 1870–1953, Cape Split, Maine), *Palisades, Hudson River, New Jersey*, 1923, watercolor and charcoal on textured watercolor paper, 19 3/4 x 16 1/2 in., Arkansas Arts Center Foundation Collection: Gift of Norma B. Marin. 2013.018.234 ©Estate of John Marin, Artist Rights Society, New York (ARS)

BECOMING
JOHN MARIN
MODERNIST at WORK

OCTOBER 27, 2018-JANUARY 20, 2019 | COWDEN GALLERY



BECOMING JOHN MARIN: MODERNIST AT WORK explores the transformation of the artist John Marin (1870–1953) from intuitive draftsman to innovative watercolorist and etcher. The exhibition takes a new look at Marin’s work, with finished watercolors, etchings, and paintings reunited with primary sketches.

“Marin is known as a Modernist for his abstract landscapes and watercolors, but most people aren’t aware that drawing was central to his work,” said Chief Curator William Keyse Rudolph. “This exhibition invites the visitor to see Marin’s artistic development and process through his working sketches.”

KNOW MORE

Opening Weekend Tours

Saturday & Sunday, October 27 & 28
12:00 p.m. & 1:00 p.m.

John Marin was established as one of America’s premier watercolorists. He became a major figure among the cutting-edge circle of American modernist artists (including Georgia O’Keeffe) who showed their work in Alfred Stieglitz’s New York galleries from 1909 until 1950. But Marin’s artistic career started quite late. Even though he had experimented with art from childhood and studied at the Pennsylvania Academy of Fine Arts, he did not become a serious artist until he met Alfred Stieglitz in 1909, when he was almost forty years old. *Becoming John Marin* traces Marin’s evolution from draftsman and architect in his twenties to painter, abstractionist, and modern master.

“The visitor will see ‘Marin the architect’ through precise drawings of Manhattan’s bridges but also ‘Marin the artist’ as other Manhattan drawings look like modernist compositions, experiments in fragmenting forms,” said Rudolph.



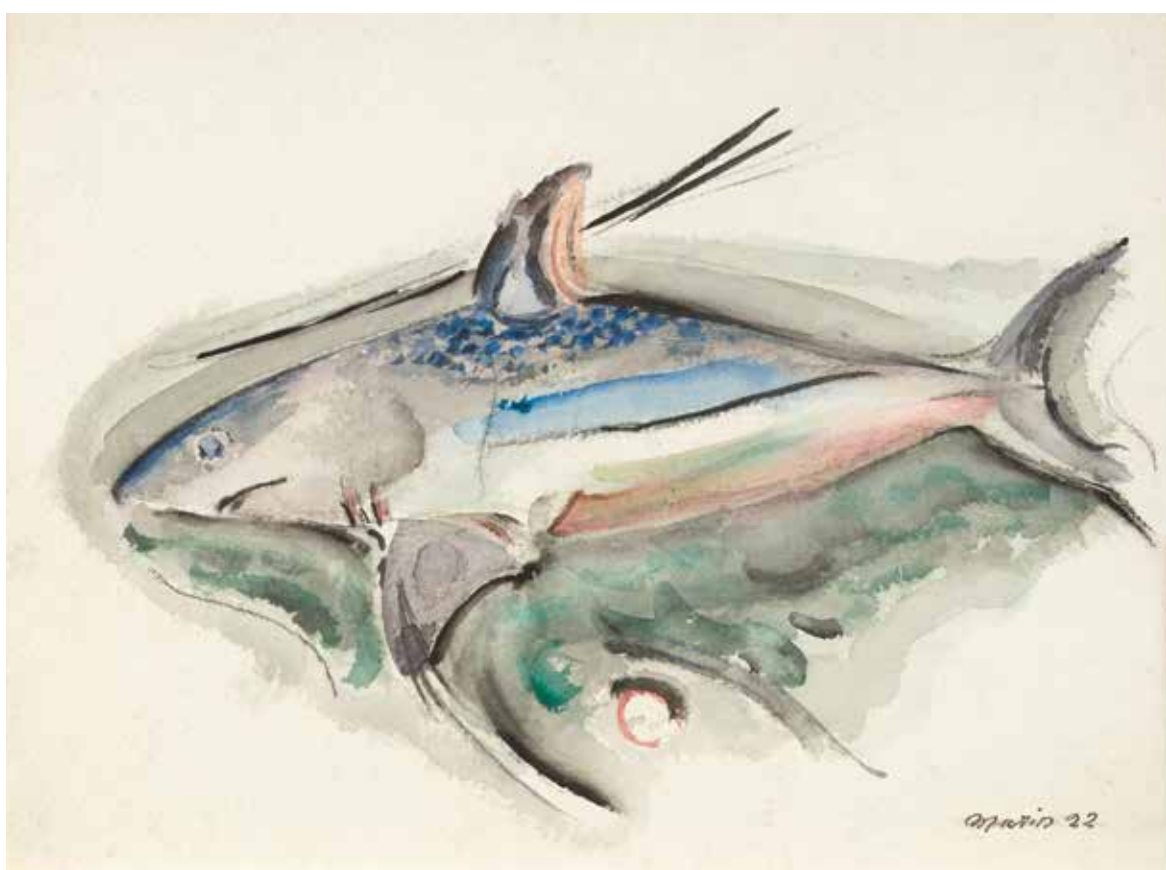
Becoming John Marin also includes depictions of Maine's coastal landscape, one of the artist's favorite places to paint and draw. After visiting the Maine coast in 1914, he subsequently spent almost every summer there, finding inspiration in the rocks, water, and trees.

Marin made only a few drawings in Maine because he could work undisturbed and paint a watercolor on the spot. But on the hectic New York streets, he often sketched on inexpensive writing pads, capturing his initial ideas and lending insight into his artistic process.

This exhibition introduces the collection of 290 drawings and watercolors by John Marin donated to the Arkansas Arts Center by Norma Marin, the artist's daughter-in-law. Many of the working drawings on view have never been exhibited before. Viewers can look over the artist's shoulder at his process of creating sketches and honing them into distinctively abstracted watercolors and etchings. The exhibition is augmented by examples of Marin's drawings, watercolors, engravings, and oil paintings drawn from the distinguished private collection of San Antonio philanthropist and businessman Charles Butt.

Member Preview: October 26 | 6:00-8:00 p.m.

This exhibition is organized by the Arkansas Art Center in Little Rock. It is generously funded by USAA and the Marcia and Otto Koehler Foundation, Bank of America, N.A. Trustee.



Opposite Page:
John Marin, American (Rutherford, New Jersey, 1870 – 1953,
Cape Split, Maine),
On Mount Desert, Maine, 1920,
watercolor over graphite on textured watercolor paper,
14 x 16 3/4 in.,
Arkansas Arts Center Foundation Collection: Gift of Norma B.
Marin. 2013.018.142
© 2018, Estate of John Marin/Artist Rights Society,
New York (ARS)

Top Right:
John Marin, American (Rutherford, New Jersey, 1870 – 1953,
Cape Split, Maine),
Municipal Building, Manhattan, 1912,
graphite on paper, 10 x 8 in.,
Arkansas Arts Center Foundation Collection: Gift of Norma B.
Marin. 2013.018.273
© 2018, Estate of John Marin/Artist Rights Society,
New York (ARS)

Bottom Right:
John Marin, American (Rutherford, New Jersey, 1870 – 1953,
Cape Split, Maine),
Blue Shark, 1922,
watercolor and charcoal on heavy textured watercolor paper,
12 1/8 x 16 1/8 in.,
Arkansas Arts Center Foundation Collection: Gift of Norma B.
Marin. 2013.018.085
© 2018, Estate of John Marin/Artist Rights Society,
New York (ARS)

Deep Seated

YOU MAY KNOW HIS ICONIC FURNITURE without knowing his name—or that Italian-born designer Harry Bertoia (1915–1978) also produced outstanding work in printmaking, jewelry, and monumental architectural sculpture.

In 2004–5, local collectors Robert and Laura Cadwallader gave the San Antonio Museum of Art three excellent Bertoia works: a sculpture composed of bundled rods; a child’s chair formed of the wire grid characteristic of his popular Knoll chairs; and a “Sonambient” sculpture that emits sounds when struck. They are now exhibited for the first time, accompanied by several pieces on loan from private collections that chronicle the breadth of Bertoia’s artistic vision and superb craftsmanship.

After immigrating to the United States at age 15, Bertoia enrolled in the innovative Cranbrook Academy in Bloomfield Hills, Michigan, in 1937. Among his classmates were artists who would influence his work for the rest of his life: architect Eero Saarinen, designers Charles and Ray Eames, and Hans and Frances Knoll, who established the successful furniture company Knoll, Inc., in 1950, which ultimately produced his chair designs.

At Cranbrook, Bertoia was in charge of the metalworking shop, producing small jewelry pieces in silver, brass, and gold that propelled him deeper into metalworking, which became a focus of his career.

Bertoia collaborated on furniture design with Charles and Ray Eames in 1943 before joining the Knolls’ newly established design firm in 1950—the turning point of his career. His initial designs for light wire grid chairs, sometimes upholstered, were an immediate success and are still widely sold today.

From then on, Bertoia created wall sculptures for important new architecture, fountains for public art, and thousands of small sculptures investigating a variety of metals and finishes. The “Sonambient” sound sculptures made from metal rods, and the music he composed for them, were the final creations that secured his artistic reputation. This focus exhibition allows viewers to explore the development of an innovative artist across several media.

Harry Bertoia: Sculptor and Modernist Designer

Opens September 14, 2018
Golden Gallery



Top:
Harry Bertoia (American, 1915-1978)
Lounge Chair, 1951
Welded steel grid (black), wool cover (red), h. 30 in. (x cm); w. 33 ½ in. (x cm); d. 28 ¼ in. (x cm)
Collection of Kevin Keim
Image © Kevin Keim
Art © 2018 Estate of Harry Bertoia / Artists Rights Society (ARS), New York

Above:
Harry Bertoia (American, 1915-1978)
Partition of Sound, 1973
Beryllium copper rods silvered to brass plate, h. 28 in. (71.1 cm); w. 36 in. (91.4 cm); d. 6 in. (15.2 cm)
Gift of Mr. and Mrs. Robert B. Cadwallader, 2004.19.1
© 2018 Estate of Harry Bertoia / Artists Rights Society (ARS), New York

CALENDAR



JUST FOR MEMBERS

Insider Walk and Talk: Velázquez and Zurbarán

Wednesday, September 12 | 6:00–7:00 p.m.

\$25 members | RSVP: samuseum.org/calendar | Space is limited.

Join an intimate in-gallery talk with visiting lecturer Alexandra Letvin, PhD, Philadelphia Museum of Art.

Member Brunch: Spain: 500 Years of Spanish Painting

Saturday, September 15 | 11:00 a.m.–1:00 p.m.

\$25 members | RSVP: samuseum.org/calendar

Members will enjoy a docent-led tour of *Spain* followed by brunch at Tre Trattoria, the Museum restaurant. Ticket price includes meal.

Behind the Scenes with Zahira Véliz, Paintings Conservator

Sunday, September 16 | 5:30–7:00 p.m.

\$45 members | RSVP: samuseum.org/calendar

Spend time in *Spain* on its final day. Conservator Zahira Véliz, from the Museum of Fine Arts, Houston, will give a gallery talk on her experience working on Velázquez's *Las Meninas* at the Prado and *The Kitchen Maid* at the MFA, Houston.

Gallery Talk: Material Memory with Lana Meador

Friday, September 21 | 6:30–7:30 p.m.

\$15 members | RSVP: samuseum.org/calendar

Enjoy an in-depth gallery discussion of *Marilyn Lanfear: Material Memory* with exhibition curator Lana Meador.

Curators Society: Behind the Scenes with Michelle Rich, PhD

Wednesday, October 3 | 6:00–8:00 p.m.

Free | Curators Society members (\$250 and above)

RSVP: samuseum.org/calendar

Join archaeologist Michelle Rich, the Museum's Andrew W. Mellon Postdoctoral Curatorial Fellow, for a look at Ancient American works from our permanent collection. Select pieces not presently on view will be shown and discussed, followed by light refreshments.

Member Preview Day: Becoming John Marin

Friday, October 26 | 10:00 a.m.–4:00 p.m.

See the exhibition *Becoming John Marin* before it opens to the public.

Member Preview Party: Becoming John Marin

Friday, October 26 | 6:00–8:00 p.m.

\$25 members | RSVP: samuseum.org/memberparty or 210.978.8123

Members see it first! Enjoy the opening of *Becoming John Marin* at an exclusive preview with music, wine, and light hors d'oeuvres.

Don't miss it!

SPONSOR SUPPORT

Family Programs have been generously underwritten by grants from the John L. Santikos Charitable Foundation Fund of the San Antonio Area Foundation, and the Faye L. and William L. Cowden Charitable Foundation.

Lectures are made possible by generous support from the Louis A. and Frances B. Wagner lecture fund.

Multisensory Tours for the Visually Impaired have been generously underwritten by Dr. and Mrs. Walt W. Magnus.

SPECIAL EVENTS

Art Party

Second Fridays | 6:00–8:00 p.m.

Gallery Talks | 5:30, 6:15, and 7:15 p.m.

Free with admission | Cash bar

PARTY
Art. Music. Cocktails.

September 14 | Here's Lookin' at You

Band: Judy Deleon and Tres **Cocktails:** The Brooklynite

October 12 | Saints and Sinners

Band: Chris Villanueva Quartet **Cocktails:** Blue Box

Art Party is a collaboration of the Museum and KRTU Jazz 91.7.

Festival de Arte

September 4 and 11 | 4:00–8:00 p.m.

Free | Check samuseum.org/calendar for schedule

It's a *Spain* celebration with everything from flamenco lessons to poetry readings. Check the online calendar and Facebook page for the lineup.

Sketching Spain: Portraits

Tuesday, September 11 | 6:00–8:00 p.m.

\$10 members | \$20 non-members | Register: samuseum.org/calendar

Spend time observing and discussing paintings from *Spain* followed by drawing instruction from artist/educator Megan Harrison. All supplies included.

FREE DAY! Museum Day Live

Saturday, September 22 | 10:00 a.m.–5:00 p.m.

Free admission with voucher | samuseum.org for ticket details

This annual celebration is hosted by *Smithsonian Magazine*. Hundreds of museums across the country provide free entry for two.

FREE Day

Workshop: Identity and Storytelling through Found Objects

Saturday, September 29 | 10:00 a.m.–1:00 p.m.

\$15 members | \$25 non-members

Register at samuseum.org/calendar

Join artist/educator Justin Korver in a gallery discussion of special exhibition *Marilyn Lanfear* followed by a hands-on studio workshop using found objects.

Performance: Yachting with the Kennedys

Saturday, October 6 | 3:00–5:00 p.m.

Free with admission

Composer Nathan Felix has assembled an eclectic group of musicians and performers, including Justin Boyd and From Those Who Follow the Echoes, who will present their original compositions in all corners of the Museum.

Culture Track with LaPlaca Cohen

Thursday, October 11 | 3:00–7:00 p.m.

\$10 | Register: samuseum.org/calendar | Space is limited.

What's the profile of the new cultural consumer? Why is it they engage with culture in the first place? And what keeps them away? Join us and the New York-based strategic marketing firm La Placa Cohen for a presentation of "Culture Track," the largest national tracking study of U.S. cultural consumers. A panel discussion and Q&A with local culture leaders and a happy hour (cash bar) will follow.

South-Central Conference on Mesoamerica

Friday, October 19–Sunday, October 21

Free | Visit southcentralmeso.org for registration information

The South-Central Conference on Mesoamerica brings together scholars in the fields of archaeology, ethnography, art history, and others to share and interpret current research on Mesoamerican cultures. **The public is invited.**

Friday, October 19

5:30 p.m. | Registration (free)

6:00–7:00 p.m. | Keynote: "Ancient Maya Life, Death, and Identities:

A View From Yaxuná, Yucatan, Mexico" by Vera Tiesler, PhD

7:00–8:30 p.m. | Reception

Saturday, October 20

8:00 a.m. | Registration (Free)

8:30 a.m.–5:00 p.m. | Conference presentations

7:00 p.m. | Screening: *Out of the Maya Tombs* and panel discussion with film director David Lebrun; Jason Yaeger, UTSA Archaeology Professor; and Michelle Rich, SAMA Postdoctoral Fellow

Sunday, October 21

8:30 a.m. | Registration (Free)

9:00 a.m.–1:00 p.m. | Conference presentations

Destination: Maine

Thursday, October 25 | 7:00–11:00 p.m.

Individual tickets and sponsorship levels: samuseum.org/destination

Travel to Maine for this year's fall fundraiser inspired by *Becoming John Marin: Modernist at Work*.

FOR FAMILIES

(Free for children 12 and under)

Art Crawl: Gallery Tours for 0-18 Months and Caregivers Second Thursdays | 10:00-10:45 a.m.

Free with Museum admission

Bring your babies into the galleries. Art selections enhance parent-child interactions. Includes group play and social time.

Playdates (Ages 2-4)

First and Third Wednesdays | 10:00-10:45 a.m.

Free with Museum admission | Space is limited.

Cultivate, nurture, and inspire creativity through stories, gallery activities, hands-on art, movement, and music.

Family Flicks: Mary and the Witch's Flower

Friday, September 21 | Sundown

Free | West Courtyard

Young Mary follows a mysterious cat into the nearby forest and discovers an old broomstick and the Fly-by-Night flower, a rare plant that blossoms every seven years. The flower and the broomstick whisk Mary away to Endor College—a school of magic.

Family Day: See + Do: Artful Animals

Sunday, October 7 | 1:00-4:00 p.m.

Meet in Great Hall | Free with Museum admission

Discover artful animals in the galleries, and sculpt, paint, draw, and collage your own menagerie.

FOR EDUCATORS

Evening for Educators: Marilyn Lanfear: Visual Storyteller Thursday, September 27 | 5:30-8:30 p.m.

Free | 3 CPE/GT | Register: samuseum.org/calendar

Explore everyday objects as a medium for telling stories through hands-on activities and a tour of *Marilyn Lanfear: Material Memory*.

Educator Workshop: The American Landscape

Saturday, October 27 | 9:30 a.m.-3:30 p.m.

\$20 for members | \$35 for non-members

Register at samuseum.org/calendar | 6 CPE/GT

Gather new insights into the environment as subject matter and inspiration in *Becoming John Marin*. Use landscape to create abstract art and interpret it through various media. Bring a sack lunch.

LECTURES

Spanish Art History Lecture: Velázquez and Zurbarán Tuesday, September 11 | 6:30-7:30 p.m.

Free | Space is limited. | Doors open at 6:00 p.m.

Join Alexandra Letvin, PhD, Andrew W. Mellon and Maude de Schauensee Postdoctoral Curatorial Fellow at the Philadelphia Museum of Art, for an in-depth look at the work of Velázquez and Zurbarán.

Ancient Maya Figurines: A Royal Resurrection with Michelle Rich, PhD

Tuesday, October 2 | 6:30-7:30 p.m.

Free | Space is limited. | Doors open at 6:00 p.m.

Ancient Maya figurines are exhibited in museums worldwide and provide an intimate glimpse into the lives of past people. Join Andrew W. Mellon Postdoctoral Curatorial Fellow Michelle Rich on a journey exploring the ritual life of a Classic period Maya court as represented by twenty-three ceramic figurines she excavated at the archaeological site of El Perú-Waka', Guatemala.

EXHIBITION OPENINGS & CLOSINGS

Spain: 500 Years of Spanish Painting from the Museums of Madrid
June 22-September 16, 2018

Marilyn Lanfear: Material Memory
August 24-November 11, 2018

Harry Bertoia: Sculptor and Modernist Designer
Opening September 14, 2018

Becoming John Marin: Modernist at Work
October 27, 2018-January 20, 2019



GALLERY TALKS

Opening Weekend Tours: Becoming John Marin October 27 and 28 | 12:00 p.m. and 1:00 p.m.

Free with admission | Meet in Great Hall

Haunted History Halloween Tour

Tuesday, October 30 | 6:30 and 7:30 p.m.

Free | Space is limited.

Join us as we visit the mummies, monsters, and spirits haunting our galleries. All ages and costumes are welcome but please no full-face masks or accessories such as wands, swords, or scepters in the galleries.

Art to Lunch

First and Third Thursdays | 12:30-1:00 p.m.

Free for members | \$5 non-members

Take a bite out of your lunch hour with a two-object tour. Bring your own lunch or treat yourself to a meal at Tre Trattoria.



Art Fit: Art + Yoga

Second and Fourth Tuesdays | 6:00-7:00 p.m.

Free for members | \$5 non-members

Pre-register: samuseum.org/calendar

Flow from the galleries to your mat during a 5-10 minute art talk followed by all-level vinyasa yoga outdoors. Bring a yoga mat and water bottle. Classes are led by certified instructors from MBS Fitness and held rain or shine.

Multisensory Tours for the Visually Impaired

First Saturdays | 10:00-11:30 a.m.

Free | Advance registration required: tours@samuseum.org



Docent-led tours include descriptive language, touch, sound, and smell. Guide dogs, sighted companions, and all visitors welcome.

Welcome Tours: It's Art in Any Language

Third Saturdays | 11:00 a.m.-12:30 p.m.

Free | Translators welcome

The Museum welcomes newcomers to the city and the United States. Take one of our art tours to learn about the Museum's collection and programs. Please note: Tours are in English but geared toward non-English speakers.

FILMS

Mujeres de Cine: Made by Women September 7, 8, and 9 | Free

Mujeres de Cine is an initiative created in 2010 with the purpose of boosting Spanish films and short films made by women. See the calendar for descriptions and trailers.

Friday, September 7

Dancing Beethoven, Arantxa Aguirre (1h 20min)
West Courtyard | Sundown

Saturday, September 8

Júlia íst, Elena Martín (1h 30min)
John L. Santikos Auditorium | 2:00 p.m.

Summer 1993, Carla Simón (1h 37min)
West Courtyard | Sundown

Sunday, September 9

Most Beautiful Island, Ana Asensio (1h 20min)
John L. Santikos Auditorium | 2:00 p.m.

SKETCH ANY DAY. ANY TIME.

Connect with our collections through the tradition of sketching in the galleries. Check out a sketch pad, pencils, and sketching guide from the Museum Shop or bring your own. No charge.



Visit samuseum.org for calendar updates

EVERY WEEK

TUESDAY & SUNDAY

Gallery Talk: Museum Highlights
Tuesdays | 4:30–5:30 p.m.
Sundays | 11:00 a.m.–12:00 p.m.

Gallery Talk: Special Exhibitions
Tuesdays | 5:30–6:30 p.m.
Sundays | 12:00–1:00 p.m.

SATURDAY

Meditation in the Japanese Gallery
Saturdays | 10:15–11:00 a.m.

SEPTEMBER

- 1 | SATURDAY

Multisensory Tours for the Visually Impaired
10:00–11:30 a.m.
Free | Register: tours@samuseum.org
- 4 | TUESDAY

Festival de Arte
4:00–8:00 p.m.
- 5 | WEDNESDAY

Playdates: Black and White
10:00–10:45 a.m.
- 6 | THURSDAY

Art to Lunch
12:30–1:00 p.m.
Free for members | \$5 non-members
- 7 | FRIDAY

Mujeres de Cine: Dancing Beethoven
Sundown | Free
- 8 | SATURDAY

Mujeres de Cine: Júlia ist
2:00 p.m. | Free
- Mujeres de Cine: Summer 1993

Sundown | Free
- 9 | SUNDAY

Mujeres de Cine: Most Beautiful Island
2:00 p.m. | Free
- 11 | TUESDAY

Festival de Arte
4:00–8:00 p.m.
- Art Fit: Art + Yoga

6:00–7:00 p.m.
Free for members | \$5 non-members
- Sketching Spain | Portraits

6:00–8:00 p.m.
\$10 members | \$20 non-members
Register: samuseum.org/calendar
- Spanish Art History Lecture:
Velázquez and Zurbarán

6:30–7:30 p.m. | Free
- 12 | WEDNESDAY

Insider Walk & Talk: Velázquez and Zurbarán
6:00–7:00 p.m.
\$25 members | RSVP: samuseum.org/calendar
- 13 | THURSDAY

Art Crawl: How We Work and Play Together
10:00–10:45 a.m.

- 14 | FRIDAY

Exhibition Opening: Harry Bertoia

Art Party: Here’s Lookin’ at You
Party: 6:00–8:00 p.m.
Gallery Talks: 5:30, 6:15, and 7:15 p.m.
- 15 | SATURDAY

Welcome Tours: It’s Art in Any Language
11:00 a.m.–12:30 p.m. | Free
- Member Brunch: Spain

11:00 a.m.–1:00 p.m.
\$25 members | RSVP: samuseum.org/calendar
- 16 | SUNDAY

Exhibition Closing: Spain

Behind the Scenes with Zahira Véliz,
Paintings Conservator
5:30–7:00 p.m.
\$45 members | RSVP: samuseum.org/calendar
- 19 | WEDNESDAY

Playdates: Amazing Animals
10:00–10:45 a.m.
- 20 | THURSDAY

Art to Lunch
12:30–1:00 p.m.
Free for members | \$5 non-members
- 21 | FRIDAY

Gallery Talk: Material Memory with Lana Meador
6:30–7:30 p.m.
\$15 members | RSVP: samuseum.org/calendar
- Family Flicks: Mary and the Witch’s Flower

Sundown | Free
- 22 | SATURDAY

FREE DAY! Museum Day Live
10:00 a.m.–5:00 p.m.
Free admission with voucher:
samuseum.org/calendar
- 25 | TUESDAY

Art Fit: Art + Yoga
6:00–7:00 p.m.
Free for members | \$5 non-members
- 27 | THURSDAY

Evening for Educators: Marilyn Lanfear
5:30–8:30 p.m.
Free | Register at samuseum.org/calendar
- 29 | SATURDAY

Workshop: Identity and Storytelling
10:00 a.m.–1:00 p.m.
\$15 members | \$25 non-members

OCTOBER

- 1–31 | MUSEUM MONTH

Free reciprocal general admission to members
of participating institutions.
museummonthsa.org
- 2 | TUESDAY

Lecture: Ancient Maya Figurines: A Royal
resurrection by Michelle Rich, PhD
6:30–7:30 p.m. | Free
- 3 | WEDNESDAY

Playdates: Mosaics
10:00–10:45 a.m.
- Behind the Scenes with Michelle Rich, PhD

6:00–8:00 p.m.
Free for Curators Society members (\$250 & above)
- 4 | THURSDAY

Art to Lunch
12:30–1:00 p.m.
Free for members | \$5 non-members

- 6 | SATURDAY

Multisensory Tours for the Visually Impaired
10:00–11:30 a.m.
Free | Register: tours@samuseum.org
- Performance: Yachting with the Kennedys

3:00–5:00 p.m.
- 7 | SUNDAY

Family Day: See + Do: Artful Animals
1:00–4:00 p.m.
- 9 | TUESDAY

Art Fit: Art + Yoga
6:00–7:00 p.m.
Free for members | \$5 non-members
- 11 | THURSDAY

Art Crawl: Feathers, Fur, and Scales
10:00–10:45 a.m.
- Culture Track: 2018 San Antonio Launch
with LaPlaca Cohen

\$10 | 3:00–7:00 p.m.
Register: samuseum.org/calendar
- 12 | FRIDAY

Art Party: Saints and Sinners
Party: 6:00–8:00 p.m.
Gallery Talks: 5:30, 6:15, and 7:15 p.m.
- 17 | WEDNESDAY

Playdates: Textures Everywhere
10:00–10:45 a.m.
- 18 | THURSDAY

Art to Lunch
12:30–1:30 p.m.
Free for members | \$5 non-members
- 19 | FRIDAY–21 | SUNDAY

South–Central Conference on Mesoamerica
- 20 | SATURDAY

Screening and Discussion:
Out of the Maya Tombs
7:00 p.m.
- Welcome Tours: It’s Art in Any Language

11:00 a.m.–12:30 p.m.
- 23 | TUESDAY

Art Fit: Art + Yoga
6:00–7:00 p.m.
Free for members | \$5 non-members
- 25 | THURSDAY

Destination: Maine
7:00–11:00 p.m.
Tickets and sponsorships: samuseum.org/destination
- 26 | FRIDAY

Member Preview Day: Becoming John Marin
10:00 a.m.–4:00 p.m.
- Member Preview Party: Becoming John Marin

6:00–8:00 p.m.
\$25 members | RSVP: samuseum.org/calendar
- 27 | SATURDAY

Exhibition Opening: Becoming John Marin

Educator Workshop: The American Landscape
9:30 a.m.–3:30 p.m.
\$20 members | \$35 non-members
- Opening Weekend Gallery Talks:
Becoming John Marin

12:00 and 1:00 p.m.
- 28 | SUNDAY

Opening Weekend Gallery Talks:
Becoming John Marin
12:00 and 1:00 p.m.
- 30 | TUESDAY

Haunted History Halloween Tour
6:30 and 7:30 p.m. | Free

Unless otherwise noted, programs are free to members and free to the general public with the price of Museum admission, or where applicable, Special Exhibition admission.

NEW & NOTED

King and Queen of Spain Visit

Their Majesties King Felipe VI and Queen Letizia of Spain visited the San Antonio Museum of Art in June as part of the celebration of the city's Tricentennial and for the ceremonial opening of *Spain: 500 Years of Spanish Painting from the Museums of Madrid*. Director Katie Luber and Chief Curator William Rudolph led the royal couple on a preview tour of the exhibition. "They had many connections to the art," said Rudolph. "The King's grandfather had been painted by Joaquín Sorolla y Bastida, and he personally has works by Santiago Rusiñol."

On another note, the royals also enjoyed the Exhibition Shop. According to Manager of Retail Operations Caitlin Brown-Clancy, among their purchases were a print of Luis Madrazo Y Kuntz's *The Young Marchioness of Roncali* and Spanish beauty products from The Lab Room. Brown-Clancy said, "I've been tempted to put up a sign saying the King and Queen bought these products, but I've refrained!"

Brett Weston Photographs Donated

Philanthropist and collector Christian Keesee has donated fifty Brett Weston (American, 1911-1993) photographs to the San Antonio Museum of Art. The images date from 1940 to 1985 and cover a range of subjects including landscapes in Texas, California, Mexico, and Hawaii. "This generous gift enriches our holdings of over 1,500 photographs, which are primarily photojournalist, documentary, and street photography, by representing one of the most important themes—landscape—in American photography since the nineteenth century," said Suzanne Weaver, the Brown Foundation Curator of Modern and Contemporary Art.

Clueseum Murder Mystery Solved

Was it Mrs. Shepard in the Greek Gallery with the Herakles vase or the Samurai in the Roman Gallery with the bone dagger? On June 15, at a live version of the board game Clue, more than 600 visitors tackled the mystery: "Who killed the Chief Curator?" Detective-patrons searched the galleries for evidence and interrogated suspects (works of art portrayed by St. Mary's Hall drama class students). Most participants got it right: Sekhmet in the Spanish Colonial Gallery with poisoned tea! The event tied in with a screening of *The Grand Budapest Hotel*, part of a citywide Wes Anderson film festival, in which more murder mysteries unspooled. Stay tuned for more Clueseum.



Their Majesties the King and Queen of Spain tour *Spain* at the Museum.

© Casa de S.M. el Rey

Museum to Host Conference on Mesoamerica

Scholars, archaeologists, and art historians will gather at the Museum October 19-21 for the 9th annual South-Central Conference on Mesoamerica, and the public is invited to attend. This weekend-long event, co-organized with the University of Texas at San Antonio (UTSA), is free with advance or on-site registration. From the Autonomous University of Yucatán in Mérida, Mexico, Friday evening's keynote speaker Dr. Vera Tiesler will bring the ancient Maya to life. Saturday night the Museum will screen *Out of the Maya Tombs*, a documentary exploring the royal life and rich mythology of the Classic-period Maya and delving into the tangled issues of the collection and study of looted art, followed by a panel discussion with filmmaker David Lebrun, UTSA archaeologist Dr. Jason Yaeger, and the Museum's Andrew W. Mellon Postdoctoral Curatorial Fellow, Dr. Michelle Rich. For more information: southcentralmeso.org.

Mary Burch Named New Chief Development Officer

Mary Burch joined the Museum as Chief Development Officer in July and comes with nearly two decades of fundraising experience, most recently at UT Health as a Senior Director of Development. At the Museum, Burch will design and lead a comprehensive development program, including major gifts, grants, membership, annual giving, planned giving, events, sponsorships, and capital projects. "Mary's leadership and talent will be critical to our growth and advancement as an internationally recognized art museum," said Director Katie Luber.

Museum Participates in Immigrant Artist Program

With the support of the Ford Foundation, the New York Foundation for the Arts is orchestrating a national immigrant artist professional development program in San Antonio, Newark, Detroit, and Oakland. Beginning this fall, the Museum will partner with SaySi, Blue Star Contemporary, Artpace, the City of San Antonio, and the National Association of Latino Arts and Cultures to bring the program to San Antonio, which includes a two-weekend "boot camp" and mentorship by a local artist.

Two Grants Awarded by National Endowment for the Humanities

The National Endowment for the Humanities (NEH) awarded the Museum a \$315,000 grant for the digitization of the Museum's collection. This process will take place over three years and will make thousands of the Museum's works of art available online for the public.

The Museum also received a planning grant from the NEH for *Sacred Landscapes: Visions of Nature and Myth in Ancient Rome*, an exhibition examining the depiction of landscapes in ancient Roman art planned for fall 2020 and curated by Jessica Powers, PhD, the Gilbert M. Denman Jr. Curator of Art of the Ancient Mediterranean World.

Japanese Art Gallery Changed Up

The Museum collection includes more than 35,000 works. At any one time, only a fraction are on view. Delicate art can only be exposed to light for short periods. In the Japanese gallery, the *Scenes of Kyoto* screen has gone into storage while early lacquer wares, works by master painters, and other screens from the fourteenth to the nineteenth centuries are now on view. According to Assistant Curator of Asian Art, Shawn Yuan, objects were selected with animals in mind—hawk, monkey, puppies, insects, tiger, elephant. "These artworks represent the popularity of nature, in particular animals, as a subject," said Yuan. "They show the sensitivity of Japanese artists who often portrayed animals as representing human virtues or philosophical ideals."

Hawk on a Branch with Chattering Monkeys
Japanese, Edo Period, 18th century
Six-fold screen: ink, colors, and gold on paper,
h. 59 5/8 in. (151.4 cm); w. 132 5/16 in. (336.1 cm)
Gift of Lenora and Walter F. Brown, 2004.22.11
Photography by Peggy Tenison



Captured

▶ **THE DECADES BETWEEN THE 1930s AND 1970s** were some of the most important periods in the history of twentieth-century photography. Transformative events such as the Great Depression, World War II, and the civil rights movement changed the course of history—and the lives of millions—forever.

Capturing the Moment celebrates a major gift of over five hundred photographs from collectors Marie Brenner and Ernest Pomerantz and features approximately seventy primarily black-and-white photographs and a selection of films.

The exhibition will be divided into three sections: people; war and conflict; and landscapes (rural and urban). It will explore key practices such as straight, street, documentary, and photojournalist photography and highlight the technological advancements, socio-political upheavals, and cultural influences that motivated the era’s artistic innovation.

For example, the 1924 invention of the lightweight, portable Leica 35mm camera afforded photographers the flexibility to enter any landscape and to document major wars and conflicts. They could capture the “decisive moment”—the split second that reveals a subject’s larger truth—a concept conceived by the great French photographer Henri Cartier-Bresson. Other artists in the exhibition include Dmitri Baltermants, Ilse Bing, Paul Caponigro, W.E. Dassonville, Mike Disfarmer, Leonard Freed, Danny Lyon, Joel Meyerowitz, Arthur Rothstein, Stephen Shore, and Louis Clyde Stoumen.

Photography—and its power to tell stories that appear truthful—continue to be ever present in our lives. In the five decades covered in *Capturing the Moment*, photography transformed the way we see the world and the way we see ourselves. The exhibition will be complemented by lectures, films, and workshops.

Capturing the Moment: Photographs from the Marie Brenner and Ernest Pomerantz Collection
February 22—May 12, 2019
Cowden Gallery



Above:
Dmitri Baltermants (Russian, 1912–1990)
Bayonet Attack, November 1941, printed 2003
Gelatin silver print, h. 20 in. (50.8 cm); w. 16 in. (40.6 cm)
San Antonio Museum of Art, gift of Ernest Pomerantz and Marie Brenner, 2012.23.1

Left:
W.E. Dassonville (American, 1879–1957)
Gnarled Trees, High Sierras, 1930s
Gelatin silver print, h. 8 in. (20.3 cm); w. 9 in. (22.9 cm)
San Antonio Museum of Art, gift of Ernest Pomerantz and Marie Brenner, 2016.26.38 © Estate of W.E. Dassonville



YOU GIVE...
THEREFORE WE ART.
samuseum.org/annualfund

Art Scene: SUMMER OF SPAIN





© Casa de S.M. el Rey



1. Director Katie Luber, Museum Ball Co-Chair Kate Sheerin, Board Member Rosario Laird, Board Member Tom Edson, and Museum Ball Co-Chair Keller Henderson
2. State Representative Diego Bernal, Carolyn and Peter French
3. Director Katie Luber, Jennifer Cantu, and Dan Menelly
4. Archbishop Gustavo Siller and Malú and Carlos Alvarez
5. Board Member Banks Smith and Stephanie Smith
6. Director Katie Luber, Mayor Ron Nirenberg, and Board Chair Marie Halff
7. J.B. Richter, Board Member Corinna Richter, and Jackie and Eric Covey
8. Jonathan Castillo, Roland Saucedo, Stephanie Schurack, Tom Grossett, Mike Perez, and Justin Ensign
9. Director Katie Luber, Erika Prosper, Mayor Ron Nirenberg, Their Majesties King Felipe VI and Queen Letizia of Spain, Ambassador of Spain in the U.S. Pedro Morenés, Tracy Wolff, and U.S. Ambassador to Spain Duke Buchan III.
10. Iliana Arzac, Malú Alvarez, Director Katie Luber, Iñigo Arzac, Malú and Carlos Alvarez
11. Director Katie Luber and Mayor Ron Nirenberg greeting King Felipe VI
12. James McAllen, Frances McAllen with Board Member Emory Hamilton
13. Bill Jackman, Board Member Kim Lewis, AnaPaula Watson, Jessica and Clint Worth

Keeping Up with Jones Avenue

FINDS AND CURIOSITIES IN WALKING OR BIKING DISTANCE OF THE MUSEUM

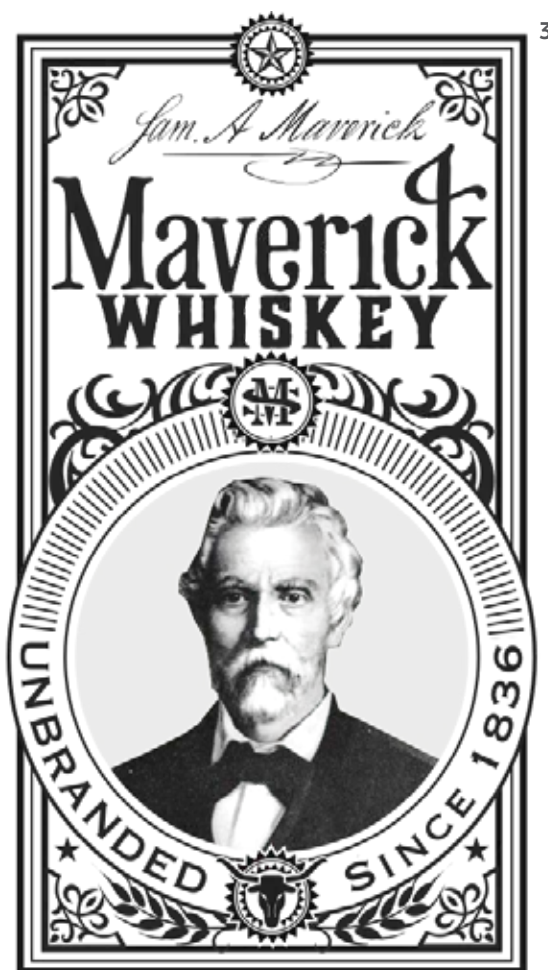


1) PHILOCOFFEE —1.9 miles
606 W. French Pl. | 210.314.8450
philocoffeesa.com

It's no surprise that an E.R. doctor who commutes from San Antonio to Laredo for work might know his coffee. Dr. David Bartos and partner Joe Ecke have transformed a carriage house near San Pedro Springs into a peaceful, light-filled neighborhood temple of caffeine. PhiloCoffee (mind that cedilla: it's pronounced "philosophy") supplements their delicious coffee with croissant or bagel breakfast sandwiches; lunch sandwiches such as Rueben, turkey and pesto, or veggie; and pastries from C'est la Vie bakery. Works by local artists (for sale) decorate the walls, the friendly staff soon greet you by name, and a patio shaded by an enormous old live oak beckons from outside.

2) SINGHS VIETNAMESE — 1.1 miles
2803 N. St. Mary's | no phone
facebook.com/SinghsVietnameseTrailer

Chef and co-owner Louis Singh is bringing the "Vietnamese cuisine with a southern lean" that draws so many fans to his food truck to a brick-and-mortar site near the Museum. The chef prepares his southern Vietnamese mother's recipes as told by her Texan son: Saigon egg rolls, bun, bánh mì, wings, jasmine rice bowls, ribs, goi with shrimp, a much-praised ten-hour brisket, and a kicking chili oil that blends Mexican and Chinese chiles. Better yet, every dish bursts with fresh organic vegetables from the local Happy Earth Garden. Coming this fall: Singh's mama's soups, like a delicious crab-and-tomato Bun Rieu and Hu Tieu (pork and shrimp soup with glass noodles).



3) MAVERICK WHISKEY — 1 mile
115 Broadway | no phone
maverickwhiskey.com

Legend has it that in 1836 when Sam Maverick was chosen to represent San Antonio de Béxar in the new Republic of Texas and rode out to Washington-on-the-Brazos, he left his jug of whiskey to be shared among his Texian comrades holed up in the Alamo. They died there only a few days later, but the illustrious Maverick cheated death and shaped San Antonio and Texas for decades to come—and his name entered the English language as a synonym for tough independence. Ken Maverick, the great-great-great-grandson of (and dead ringer for) this renowned signatory to the Texas Declaration of Independence, will soon produce craft whiskey with master-distiller Rikk Munroe using Texas-sourced corn, wheat, rye, and barley; limestone-purified aquifer water; German copper stills; and aged Texas-made oak barrels in the stately former Lockwood National Bank. Built in 1918 by Hoggson Brothers of New York and Chicago on the corner of the Mavericks' former family homestead, the beautifully restored Greek Revival building will re-open this fall to offer the signature whiskey in a full bar with a view of the stills below, food from Zócalo, a museum of Maverick artifacts, and space for event rentals. Sam Maverick was famous for not branding his cattle, but this enterprise looks to be some fine (un)branding!



4) TRE TRATTORIA AT THE MUSEUM — 0 miles
200 W. Jones Ave. | 210.978.8184
samuseum.org/restaurant

Award-winning chef Jason Dady has raised the bar on museum-restaurant dining, bringing the Northern Tuscan cuisine of Tre Trattoria to the Museum's historic Beretta Hops House overlooking the San Antonio River. In addition to Tre Trattoria favorites like varied antipasti, salads, house-made pastas, and cast-iron flatbread pizzas, Dady's menu offers exhibition- and collection-inspired specials, cocktails, wine, and beer. Museum staff and members (who receive a 10% discount) have given a collective sigh. "You can't go to a Museum, especially one as big as ours, without stopping to relax and get a bite to eat," said Director Katie Luber. "We are so glad Jason Dady has brought his delicious food and drink to the Museum and our visitors." Now open for breakfast, in addition to lunch and dinner. Cin Cin!

5) THE SHOP AT THE SAN ANTONIO MUSEUM OF ART — 0 miles
200 W. Jones Ave. | 210.978.8184
samuseum.org/shop

Sometimes bringing the background to the foreground is pure inspiration. This silk scarf is based on the tiled floor and brocade textile in Juan de Nalda's fifteenth-century painting *Saint Anthony of Padua from Spain: 500 Years of Spanish Painting from the Museums of Madrid*. Caitlin Brown-Clancy, Manager of Retail Operations, was inspired to have this scarf made. "It's so popular, we're on our second order," said Brown-Clancy. Get it while you can, and pick up a set of coasters inspired by the patterns as well!

CIRCLE MEMBERS

as of May 31, 2018

CHAIRMAN'S CIRCLE (\$100,000)

Mr.* and Mrs. George C. Hixon-
Ms. Claudia Huntington and Mr. Marshall
Miller Jr.
Ms. Kim Lewis
Mr. and Mrs. Lowry Mays

DIRECTORS CIRCLE (\$25,000)

Mrs. Marie Halff
Mr. and Mrs. Fred Hamilton
Mrs. Ruth Eilene Sullivan

LEADER'S CIRCLE (\$10,000)

Mrs. Walter F. Brown
Mr. Charles Butt
Mr. and Mrs. Toby O'Connor

BENEFACTOR'S CIRCLE (\$5,000)

Mr. and Mrs. Lee M. Bass
Mr. and Mrs. Charles Bowden
Mr. and Mrs. James F. Dicke II
Mr. and Mrs. Dale F. Dorn
Mr. Thomas H. Edson
Mr. and Mrs. Ronald J. Herrmann
Mr. and Mrs. Michael Humphreys
Mrs. Eva Garza Lagüera
Mrs. Dorothea C. Oppenheimer
Corinna and J.B. Richter
Mr. and Mrs. William A. Scanlan Jr.

PHILANTHROPIST'S CIRCLE (\$2,500)

Dr. and Mrs. Wilbur S. Avant Jr.
Mr. and Mrs. William D. Balthrope
Ms. Margery L. Block
Ms. Cassandra Carr
Mr. and Mrs. Jorge del Alamo
Dr. and Mrs. Charles H. Du Val
Mr. and Mrs. John D. Eadie
Mr. and Mrs. C. Michael Gentry
Mrs. Claire Golden
Dr. and Mrs. William Gonzaba, MD
Mr. and Mrs. James W. Gorman Jr.
Ms. Helen K. Groves
Mr. and Mrs. Christian Herff
Mr. and Mrs. Frank Herrera
Dr. and Mrs. Risto E. Hurme
Dr. and Mrs. John R. Jinkins
Mr. Chris Karcher and Ms. Karen Keach
Mr. and Mrs. Darrell Kirksey
Mrs. Rosario Laird
Dr. and Mrs. Fernando Lopez
Dr. Katherine McAllen and Mr. James A.
McAllen
Mrs. Edith McAllister
Mr. and Mrs. Brian Meuth
Mr. and Mrs. Bruce Mitchell
Mr. and Mrs. Gregg Muenster
Col. and Mrs. William Dean Rasco
Mr. and Mrs. Bruce C. Richardson Jr.
Mr. and Mrs. Barry C. Roberts
Mr. Nelson A. Rockefeller Jr.
Ms. A. Kate Sheerin
Mr. and Mrs. Banks M. Smith
Mr. and Mrs. Forrester M. Smith
Mr. and Mrs. Edward Steves
Ms. Mary Pat Stumberg
Ms. Sidney Swearingen and
Dr. Stephen F. Wood
Mr. and Mrs. Rich Walsh
Mr. and Mrs. Mark E. Watson III
Mr. and Mrs. Edward E. Whitacre Jr.
Mr. and Mrs. George M. Williams
Mr. and Mrs. Richey Wyatt
Mr. and Mrs. David Zachry

CIRCLE (\$1,000)

Lexie and Rowan Altgelt
Mr. and Mrs. Carlos Alvarez
Mr. and Mrs. Iñigo Arzac
Ms. Tracy Avery
Mr. and Mrs. Morton W. Baird II
Drs. Maryan and Otis Baskin
Dr. Tyson E. Becker and Mrs. Katie M.
Sutcliffe Becker
Ms. Jackie Beretta and Mr. Benjamin
Rodriguez
Ms. Margaret Corning Boldrick
Mr. and Mrs. Michael J. Bolner
Dr. Lois L. Bready and Dr. Joseph R.
Holahan
Mr. and Mrs. Bradford R. Breuer
Kimberly and Gary Britton
Mr. and Mrs. Robert B. Cadwallader
Dr. and Mrs. Ronald K. Calgaard
Mr. and Mrs. Richard Calvert
Brig. Gen. (Ret.) David M. Cannan and
Ms. Susan Christensen
Mr. and Mrs. Michael Card
Mr. Chris Carson
Mr. and Mrs. Charles E. Cheever Jr.
Mrs. Emilie K. Chenault
Mr. Rodolfo Choperena
Mr. Edward E. Collins III
Mr. and Mrs. Stephen Collins
Mr. William R. Crow Jr.
Mr. and Mrs. William E. Dreyer
Mr. and Mrs. Brooke F. Dudley
Ms. Caroline Forgason
Mr. Charles A. Forster
Ms. Jeannie M. Frazier
Mr. and Mrs. Mark Gale
Mr. and Mrs. Frederick C. Groos Jr.
Mr. and Mrs. Harry A. Halff
Mrs. Friedrich Hanau-Schaumburg
Mr. and Mrs. Houston H. Harte

Ms. Linda K. Haseloff
Mr. and Mrs. James L. Hayne
Mr. Max Hensley and Ms. Bilinda Wilkinson
Mr. Christopher C. Hill
Dr. and Mrs. Bruce G. Hopkins
Mrs. Erika J. Ivanyi
Miki and Sebastian Izzard
Dr. and Mrs. Robert L. Jones
Rev. and Mrs. Raymond E. Judd Jr.
Ms. Dianne Kamolsri
Mr. and Mrs. Patrick J. Kennedy
Mr. and Mrs. Greg King
Ms. Rosemary Kowalski
Ms. Barbara C. Kyse
Mr. and Mrs. Blair Labatt
Mr. and Mrs. Robert R. Lende
Mr. James R. Letchworth and Mr. Kirk C.
Swanson
Mrs. Ingrid P. Lewis
Mr. and Mrs. Lance Lubel
Dr. and Mrs. M. Philip Luber
Mrs. Alice Lynch and Mr. Sam Norwood
Dr. and Mrs. Roger Lyons
Mr. William Maney and Mr. Michael Weil
Ms. Mary S. Marmion
Mr. Paul Martin
Mr. and Mrs. Raymond McClellan
Mr. and Mrs. Red McCombs
Mr. and Mrs. Theodore F. Meyer
Mr. Douglas Miller
Mr. and Mrs. Lewis J. Moorman
Mrs. Judith N. Morton
Ms. Judé C. Mueller
Mr. John E. Newman Jr.
Mr. and Mrs. Allan G. Paterson Jr.
Drs. Robert and Diane Persellin
Mrs. and Mr. Pamela W. Read
Mr. Epitacio R. Reséndez V and Mr. Hunter
Henke
Ms. Laura M. Richards
Mr. and Mrs. Jeffrey D. Ryan
Emily Sano and Gilson Riecken
Mr. and Mrs. Robert A. Shivers
Mr. Conrad Sterrett
Mr. and Mrs. Donald Steward
Mr. Patrick H. Swearingen Jr.
Ms. Melissa Varner
Mr. Charles R. Walker
Ms. Courtney Walker
Mr. and Mrs. Mark E. Watson Jr.
Ms. Kittie West
Mr. and Mrs. Jim Williams
Dr. Patricia Winter-Valdez and Dr. Daniel C.
Valdez
Mr. and Mrs. Thomas A. Wirth
Mr. and Mrs. Carl E. Wulfe
Mr. and Mrs. Bartell Zachry

CORPORATE MEMBERS

as of May 31, 2018

CORPORATE DIRECTOR'S CIRCLE

(\$25,000)
Bank of America
The Capital Group Companies Charitable
Foundation
H-E-B
Valero Energy Foundation

CORPORATE BENEFACTOR'S CIRCLE

(\$5,000)
Hixon Properties Incorporated
Jefferson Bank
Lucifer Lighting Company

CORPORATE ART SOCIETY CIRCLE

(\$1,000-\$2,500)
Anne Zanikos Art Conservation
Bolner's Fiesta Products, Inc.
Christies, Inc.
ENTRUST Technology Consulting Services
Frost
Luther King Capital Management
Sendero Wealth Management
The Trust Company

SMALL BUSINESS (\$500)

Lark Mason Associates Inc.
Paloma Blanca Mexican Cuisine
Vogt Auction Galleries

UNIVERSITY PARTNERS

Alamo Colleges
University of the Incarnate Word

NEW & RETURNING MEMBERS

as of May 31, 2018

PATRON (\$550)

Mr. and Mrs. Ben J. Adams
Dr. Clifford N. Alprin and Dr. Lindsey M.
Hawkins-Alprin
Mr. Kevin W. Baker
Dr. George Beddingfield
Mr. Robert W. Boerner
Mr. and Mrs. Thomas Bronder
Dr. Cheri Carter-Rubenstein
Ms. Tsuichun R. Chang
Mr. John Cornell
Sister Kathleen Coughlin
Mrs. Flora Crichton
Mr. and Mrs. Robert R. Dale
Mr. Thomas L. Dashiell
Mr. and Mrs. Edward Faleski
Ms. Bonnie L. Flake and Dr. Francisco
García-Treto

Amb. Antonio Garza and Dr. Eloise Atkinson
Garza
Ms. Laura I. Gates
Mrs. Mari Glamser-Samuel
Dr. and Mrs. Joseph W. Goldzieher
Dr. and Mrs. William L. Henrich
Mr. Chris Hernandez and Ms. Michelle
Maloney
Mr. David Brian Holland
Dr. Edward E. Horvath and Dr. Lynn L.
Horvath
Dr. Obinna G. Isiguzo
Mr. and Mrs. John Korbell Sr.
Dr. and Mrs. Victor Lam
Mrs. Ingrid Lee
Mr. William S. Lewis and Ms. Laura Claghorn
Ms. Audrey Mangold
Cary Marriott and Jim Taylor
Ms. Debbie Martinez
Mr. and Mrs. Gilbert Mathews
Mrs. Louella McCamish
Mr. Dana F. McGinnis
Mr. and Mrs. Tom Mengler
Drs. Blanca and Rodolfo Molina
Ms. Susan L. Mooberry and Mr. Gregory M.
Patterson
Mr. Adam Muhlig
Ms. Linda Nairn
Mr. and Mrs. Floyd R. Nation
Mr. and Mrs. John M. Oppenheimer
Mr. and Mrs. Jon M. Purdy
Mrs. Iris Rubin
Mr. and Mrs. Lewis F. Russell Jr.
Scott Sanders and Isabel Garcia
Ms. Linda N. Seeligson
Dr. and Dr. Alberto C. Serrano
Ms. Rebecca Simmons
Mr. and Mrs. Jack J. Spector
Mrs. Elsie G. Steg
Mr. and Mrs. Robert E. Stevens
Ms. Karen M. Thompson
Mr. and Mrs. Gary R. Walter
Mr. and Mrs. Donald E. Weber
Dr. and Mrs. Mark B. Weinstein

DONATIONS

February 1, 2018 to May 31, 2018

\$100,000 and Above

Bank of America
Bank of America Charitable Foundation
City of San Antonio
Elizabeth Huth Coates Charitable
Foundation of 1992
Estate of Gilbert M. Denman Jr.
Ms. Kim Lewis

\$25,000 to \$99,999

The Brown Foundation, Inc.
H-E-B
H-E-B Tournament of Champions
Charitable Trust
Institute of Museum and Library Services
National Endowment for the Arts
Russell Hill Rogers Fund for the Arts

\$10,000 to \$24,999
Frost
George Weldon Sheffield Fund
Mays Family Foundation

\$5,000 to \$9,999

The Jeffrey Horvitz Foundation
Carol Lee Jones Educational and Cultural
Fund
Mrs. Rosario Laird
Mr. and Mrs. Toby O'Connor

\$1,000 to \$4,999

Destination Paradise
Exxon Mobil Foundation
Mr. and Mrs. Ted Flato
Estate of Laura I. Gates
The Gorman Foundation
Mr. Bruce E. Grossman
Ms. Helen K. Groves
Sarah E. Harte and John S. Gutzler Fund
Ms. Claudia Huntington and Mr. Marshall
Miller Jr.
Bobbie S. Martin
Mr. and Mrs. Jim McMullan
Roger L. and Laura D. Zeller Charitable
Foundation

\$500 to \$999

Mr. and Mrs. C. Michael Gentry
Mr. Christopher C. Hill
Mr.* and Mrs. George C. Hixon
Mr. Chris Karcher and Ms. Karen Keach
Mr. Scott McMillan
Schwab Charitable Fund

MUSEUM BALL SPONSORS

Velázquez - \$50,000

Malú & Carlos Alvarez
Argo Group
A Friend of the Museum
Claudia Huntington & Marshall B.
Miller Jr.
Henry Muñoz and Kyle Ferari Muñoz /
Muñoz and Co.
Betty Stieren Kelso Foundation &
Mr. & Mrs. Barry Roberts

Goya - \$25,000

Bank of America
Charles Butt
Laura & Sam Dawson
Alice & Eric Foultz
Greehey Family Foundation
Karen & Tim* Hixon
Candace & Michael Humphreys
Kim Lewis
Marquee Rentals
Mays Family Foundation
Corinna & J.B. Richter
Jenny & Rick Schimpff
Betty Lou Sheerin & Ruth Eilene Sullivan
Kate Sheerin & Keller Henderson
Siebert Foundation & Jane
Macon/Bracewell & Smothers
Foundation

Picasso - \$10,000

BBVA Compass
Tani & Thomas Brundage
American Airlines Cargo
Iliana & Iñigo Arzac
Capital Group Companies
Doane Foundation & Toby Calvert
Charles A. Forster & Thomas Edson
The Gambrinus Company
Guido Construction
H-E-B
Helen K. Groves
Mary & Christian Herff & Katherine &
James McAllen
Hotel Emma
Kreager Mitchell, PLLC
Dana McGinnis
Neiman Marcus
Sendero Wealth Management
The St. Anthony Hotel
Stieren Family
Valero Energy Corporation

Underwriters

Jorge & Dawn del Alamo
Frost
Gentry Family Fund of the San Antonio
Area Foundation
Emory & Fred Hamilton
Rose Marie & John Hendry
Judith Morton
John Newman Family Charitable Fund of
the San Antonio Area Foundation
Karen & Ronald J. Herrmann in honor of
Malú & Carlos Alvarez
McCombs Foundation, Inc.
Page/Dyal Branding & Graphics
Iris Rubin
Steves Foundation
Frances & Peter Swenson
Twin Liquors
Lori & Mark Wright

TRIBUTES

June 1-September 30, 2017

In Memory of Patsy Steves

Dr. and Mrs. Wilbur S. Avant Jr.
Mrs. Ann D. Biggs
Mr. and Mrs. Sam Brous
Mr. and Mrs. Jamie Browning
Mr. Robert T. Buchanan
Mr. and Mrs. Robert B. Cadwallader
Dr. and Mrs. William J. Chiego
Mr. and Mrs. Edgar A. Christy III
Mrs. Lila Cockrell
Mrs. Lynn F. Crystal
Ms. Jane T. Drought
Mr. Bill Drury
Mr. Thomas H. Edson
Ford, Powell & Carson
Ms. Beatriz G. Garcia
Mr. and Mrs. Tom Gates
Mr. and Mrs. C. Michael Gentry
Mrs. Claire Golden
Golden Steves & Gordon LLP
Mr. and Mrs. James W. Gorman Jr.
Mr. and Mrs. Frederic Hamilton
H-E-B
Rose Marie and John L. Hendry III
Charitable Trust
Herrmann Family Charitable Foundation
Mr.* and Mrs. George C. Hixon
Ms. Claudia Huntington and Mr. Marshall
Miller Jr.
Mr. and Mrs. Michael Humphreys
Rev. and Mrs. Raymond E. Judd Jr.
Mrs. Rosario Laird
Mr. and Mrs. Ralph E. Lehr Jr.
Mr. and Mrs. Robert R. Lende
Robert S. McClane and Sue N. McClane
Mr. and Mrs. Paul E. Menchen
ODL
Mr. and Mrs. William B. Osborn III
Mr. and Mrs. James P. Owen
Dr. and Mrs. Henry Perkins
Mr. Adam Rabinowitz
Mr. Epitacio R. Reséndez V and
Mr. Hunter Henke
Mr. and Mrs. Jamie B. Musselman
Mrs. Cathy Obriotti Green
Mr. and Mrs. Jimmy Stewart
Mrs. Ruth Eilene Sullivan
Mr. Patrick H. Swearingen Jr.
Mrs. Ann B. Watson
Mr. and Mrs. David Zachry

In Memory of Beverly Bashore

Mrs. Joan L. Bobrukiewicz
Mr. and Mrs. Christopher D. Chrismore
Mrs. Mary D. Dawson
Mrs. Rosario Laird
Ms. Sally Ann Rios

In Memory of Benjamin Dean Holt Jr.

Ms. Jane T. Drought
Mr. and Mrs. A. Baker Duncan

In Memory of Larry Sheerin

Mr. and Mrs. Michael Humphreys
Mr. and Mrs. Thomas L. Powell Jr.

In Memory of Adair R. Sutherland

Mr. and Mrs. A. Baker Duncan

In Memory of Mrs. Lila Luber

Dr. and Mrs. Wilbur S. Avant Jr.
Ms. Jeannie M. Frazier

In Honor of Patricia Diaz Dennis

Ms. Rayen P. Dennis

In Honor of Judy Ely

Mr. and Mrs. Anthony B. Smolen Jr.

In Honor of Aubrey Searcy and Ricky Groos

Mr. and Mrs. Robert R. Lende

In Honor of Stephanie and Banks Smith

Mrs. Rosario Laird
Cary Marriott and Jim Taylor

In Honor of Sidney Swearingen and
Stephen Wood

Mrs. Ruth Eilene Sullivan



* deceased

READY, SET, MARK
YOUR CALENDAR



LAST CHANCE TO SEE SPAIN
Closing September 16



FUN FOR A CAUSE
October 25 | Destination Maine



KNOW MORE
South-Central Conference on Mesoamerica
October 19-21

SAN ANTONIO MUSEUM of ART

200 West Jones Avenue | San Antonio, Texas 78215

NONPROFIT ORG
U.S. POSTAGE
PAID
SAN ANTONIO, TX
PERMIT NO. 2716

STAY IN TOUCH

Follow us on Facebook, Twitter,
Instagram & YouTube



SAMUSEUM.ORG

LEFT:
Still from *Out of the Maya Tomb*, a documentary directed by David Lebrun

SAN ANTONIO
MUSEUM
MONTH
OCTOBER 2018
A TRICENTENNIAL EVENT 300
SAN ANTONIO

Celebrating the museums
of San Antonio.
Free reciprocal admission
for two to members of
participating institutions
in October.

Check the website for details and special events:
museummonthsa.org

