

Summer 2016

# THE RATTLE

OF THETA CHI FRATERNITY

Theta Chi's Visual Update PAGE 12

**Editor**

Kris Taibl

**Contributing Writers**

David E. DeVol (Gamma Theta/San Diego State 1959)  
 Callen Raveret (Psi/Wisconsin 2016)

**Graphic Design**

Jody Toth/Becky Otte

**Published by**

Maury Boyd and Associates, Inc.

The International Headquarters is located at:  
 865 W. Carmel Drive  
 Carmel, IN 46032

To reach the International Headquarters staff:

MAILING ADDRESS:

P.O. Box 503

Carmel, IN 46082

PHONE: 317-848-1856

FAX: 317-824-1908

EMAIL: [ihq@thetachi.org](mailto:ihq@thetachi.org)WEBSITE: [www.thetachi.org](http://www.thetachi.org)

To reach the Foundation Office, please email:  
[foundation@thetachi.org](mailto:foundation@thetachi.org)

*The Rattle* is the official alumnus publication of Theta Chi Fraternity. It is provided electronically to all undergraduate and alumnus members of Theta Chi chapters, colonies, and interest groups. Print editions are provided to: all active contributors to the Grand Chapter and/or to the Foundation Chapter; volunteers of the Fraternity; and undergraduate chapters. Individuals may request a printed copy by contacting the Editor at [rattle@thetachi.org](mailto:rattle@thetachi.org) or by updating their information at [www.thetachi.org](http://www.thetachi.org).

**Contributions**

**Story Submissions:** *The Rattle* welcomes all story submissions. Decisions to publish submitted materials is at the sole discretion of the Editor.

**Photo Submissions:** Please share photos of your events! Both print and electronic publication requires photos to be captured at high resolution (minimum 300 dpi, and preferably 600 dpi). Set your camera to its highest setting for maximum file size. Please do not alter or try to correct the original capture. Doing so can permanently delete information that our production team will need to process the best picture for publication. Also, please use a flash to make sure the subjects are well-lit. Large photos can be posted to an FTP site or mailed to the editor on a CD. When you submit copy, photos or video for inclusion in *The Rattle*, you agree to allow Theta Chi Fraternity, Inc., The Foundation Chapter of Theta Chi Fraternity, Inc., and The Norwich Housing Corporation the right to post, publish, broadcast, print or otherwise use in any manner Theta Chi Fraternity, Inc. deems appropriate. All media submitted becomes the property of Theta Chi Fraternity, Inc.

Please send any materials for publication, as well as address changes, to the Editor at: [rattle@thetachi.org](mailto:rattle@thetachi.org)



## FROM THE INTERNATIONAL PRESIDENT

## Oh what a ride it has been!

On the occasion of our 154th Anniversary Convention in Orlando, Florida in 2010, I had the honor and privilege to be the keynote speaker at the Convention closing banquet.

That night I gave a speech that I titled the "THETA CHI RIDE." With Orlando being the amusement park capital of the world, I felt it was a good fit. I explained to the audience that the "THETA CHI RIDE" was one of time travel, and I proceeded to share many of my experiences as a member of America's best Fraternity. I started with my time as a pledge in the fall of 1969 at Gamma Theta Chapter on the campus of San Diego State University and from there, traveled to my time as an active member and an officer of my chapter. I reminisced about my time as a Field Executive in the early 1970s and as a volunteer serving as a Regional Counselor in California and Colorado. I touched on my election to the Grand Chapter in 1988 and my four-year term, two as International Marshal and two as International Vice President. In all honesty, I spent the majority of the speech talking about the personalities of so many Theta Chi brothers who I had met along the way. It brought back many memories, laughs, and smiles, for both myself and the audience about the true thrill ride of my life—the "THETA CHI RIDE."

Fast forward to the 156th Anniversary Convention held in Palm Springs, California. A few months before the event, several of my closest friends in the Fraternity asked if I would be interested in becoming a candidate for the Grand Chapter once again. As fate would have it, my "THETA CHI RIDE" was about to expand beyond my wildest dreams. On July 7, 2012, I was elected as International President and was re-elected in the July of 2014 at the 158th Anniversary Convention in Minneapolis; an honor that was both humbling and somewhat overwhelming.

WOW! What a four years it has been. A new International Headquarters, our first national philanthropic partnership with the USO, the introduction of Sacred Purpose, the election of our first Vice Presidents of Health and Safety, the launch and completion of our first capital campaign to endow our Presidents Conference, the updated imaging of the Fraternity, and finally, the creation of our new four-year education program—The Resolute Man. In addition, the Fraternity set record numbers for membership growth, chapter expansion, and financial sustainability. Without a doubt, this is a record of accomplishment that we as a brotherhood can all be proud of. The past four years have been a total "Resolute" collaboration on the part of every dedicated and loyal Theta Chi toward one goal: to grow and enhance the "THETA CHI EXPERIENCE." Mike Mayer and the entire IHQ staff are to be thanked for the crucial role they played in this record of accomplishment.

To all of my brothers who have served with me, including Brothers Allen, Palmer, D'Amore, Couch, Miller, Morgan, Martin, Strelow, Brown, and Tinnin, and to our volunteers, alumni, and undergraduates, I want to say: THANK YOU, THANK YOU, THANK YOU! It has been a great honor to serve and ... OH WHAT A RIDE IT HAS BEEN!

Warm Fraternal and Personal Regards,

Richard D. Elder

International President



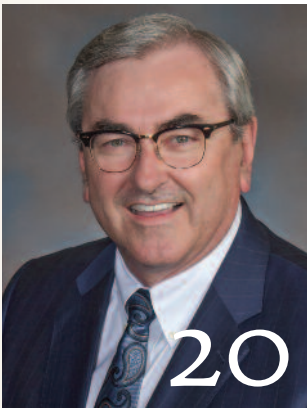


**inside**

- 4 Executive Director Letter
- 5 Staff Updates
- 6 News from the Road
- 10 Sacred Purpose
- 20 Foundation News
- 28 A Kidney Named Gronk
- 32 Collegian News
- 36 Alumni News
- 39 Chapter Eternal

**on the cover**

The Fraternity's first-ever visual update was launched in January 2016. See page 12.



**12 Rebrand** Theta Chi, along with RHB, a specialized marketing agency, worked to create standards and guidelines to provide a framework for coherent communication that is a reflective representation of Theta Chi's history and future.

**16 Resolute Man** The Resolute Man represents the future of Theta Chi Fraternity. For the first time in our history, we are defining the desired outcomes of membership in a measurable fashion.

A new logo. A new membership program. The conclusion of our first-ever widespread capital campaign. It has been a year of firsts for Theta Chi, and we're barely halfway through 2016. It's also my first issue of *The Rattle* as Editor, an honor I'm thrilled to have taken on.

So who am I? I graduated from the University of Central Florida in May 2015 with a degree in Visual Arts and Emerging Media Management. As a member of the Iota Theta Chapter, I served as Recruitment Chair and Chapter President. My goal for *The Rattle* is to provide an informative and visually-compelling magazine that coincides with today's world. Fortunately, the numerous initiatives Theta Chi launched in 2016 have given me a framework for success. Most importantly, the lessons learned from past *Rattle* Editor, Ben Hill, have been an invaluable asset. His attention to detail, as well as his knowledge on Theta Chi Fraternity, is unmatched. It is my hope that I succeed in emulating his meticulous resolve, while successfully integrating Theta Chi's updated visuals.

As you turn the pages in this issue of *The Rattle*, keep in mind that you are witnessing history. The Cornerstone Capital Campaign, The Resolute Man, and our visual update all will have a lasting impact on our Fraternity. Get excited, and get ready, because this is only the beginning.

Your editor,

  
Kristopher Taibl





When was the last time you considered the values and life skills that you have acquired as a result of your Fraternity membership?

Dear Brothers,

When was the last time you considered the values and life skills that you have acquired as a result of your Fraternity membership? Perhaps your chapter experience helped to instill our Maxim of Alma Mater First and Theta Chi for Alma Mater through academic expectations and extracurricular endeavors. You may have found service as a chapter officer or chairman a valuable experience in leading and interacting with a team. As alumni, we all carry the ideal of lending an Assisting Hand as a reminder to help our brothers and fellow man.

On a daily basis, I have the opportunity to interact with alumni from our 233 chapters and from all eras. I am consistently reassured as to the value of our Fraternity as discussions with alumni commonly gravitate towards these values and life skills acquired as a result of Theta Chi.

This summer, Theta Chi is launching an exciting new initiative, **The Resolute Man**, designed to impart the values and life skills our Fraternity teaches in a much more deliberate fashion. This initiative will not only lay forth a path toward developing good fraternity men, it also includes a means of recognizing those brothers who have demonstrated their commitment towards that growth. Beginning this fall, those men who complete the program components of the initiative will be eligible for formal recognition as a **Resolute Man**.

So critical is this new program to the future of Theta Chi, the Fraternity has refreshed its visual identity to capture the essence of **The Resolute Man**. Through the visual identity refresh, the Fraternity seeks to clearly communicate to its members, potential members, campus administrators, parents, and the general public how the Fraternity improves the lives of its members.

Please take some time to learn more about **The Resolute Man** and the visual identity refresh in the pages of this issue. The International Headquarters staff and I ask for your support of these important efforts and welcome your input as to how we can make these landmark initiatives even better.

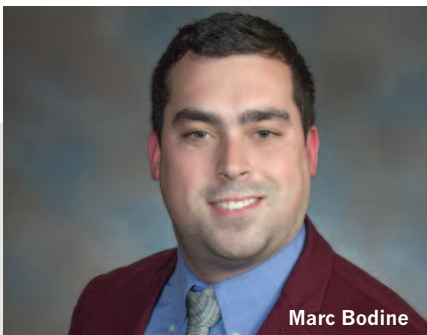
Fraternally,

Michael Mayer  
Executive Director  
(317) 848-1856  
mmayer@thetachi.org





Anthony Dominguez



Marc Bodine



Jermaine Merritt

## Staff Updates

After serving three and a half years on staff as the Director of Housing, we wish **William Toothaker** (Chi/Auburn 2012) the best of luck as he takes his talents to Atlanta, GA. Brother Toothaker will be serving as a capital campaign manager for Elevate, a fundraising and communication company tailored to Greek organizations. William worked tirelessly for the Fraternity alongside the Norwich Housing Corporation, spearheading numerous housing projects and assisting countless chapters. **Terrell Mizell** (Zeta Pi/Old Dominion 2015), who served as Associate Development Officer, has also accepted a new role. Brother Mizell now serves as a technical recruiter for Experis IT in Virginia. **Zack Brown's** (Eta Beta/Eastern Kentucky 2014) time on staff ended in December after he accepted a sales coordinator position in Lexington, KY. Zack worked with more than 40 chapters across the Northeast and Southeast during his time as a Field Executive. The International Headquarters is grateful for Brothers Toothaker, Mizell, and Brown for their hard work and dedication while on staff.

**Robert Defenderfer** (Zeta Beta/Adrian 1988) now serves as the new Chief Housing Officer. This position will be responsible



Robert Defenderfer

for continuing an expanded international housing strategy and support services. The overarching goal of the new Chief Housing Officer is to provide leadership to the Fraternity and Norwich Housing Corporation by taking a proactive stance toward chapter housing. To read more on Brother Defenderfer, head to page 11.

In January, **Anthony Dominguez** (Delta Phi/North Texas 2010) returned to the staff as the Director of Education. Anthony will oversee our Sacred Purpose initiative as well as the implementation of the Resolute Man membership program. For more information on Anthony's path back to IHQ, as well as his plans for Sacred Purpose head to page 10.

A number of Field Executives were added to the team in December including: **Marc Bodine** (Gamma Delta/Florida Southern 2014), **Kevin Kutner** (Iota Sigma/Towson 2015), and **Jermaine Merritt** (Epsilon Tau/Stephen F. Austin 2015). Theta Chi is thankful for their hard work this past spring and is excited for their upcoming semesters on the road.

For the support staff, **Edna White** recently began as a part-time receptionist at the front desk. Edna will assist with the day-to-day office operations.



# Forgotten Stories the Historian



William Maher

If only these  
composites  
could talk...

BY WILLIAM MAHER

As a Field Executive for Theta Chi, I have met every kind of chapter member. I have met Chapter Presidents; weeks into the position, an optimistic grin upon their face and determination behind their eyes. I've met entire new member classes, primed to conquer their campus. You name the stereotypical member and we've crossed paths. I've studied with the guy who attends every social event but still maintains a 4.0 in computer science. I've stood with the normally soft-spoken brother who shouts every word of *The Creed* with more conviction than the rest of his chapter. I've balanced the books with the Treasurer who is bad at math. Crossed paths with the walking zombie working nights to afford dues. Had my hand squeezed to death by a mountain acting as First Guard and debated with the totalitarian parliamentarian. I've seen chapter brothers worlds apart in ideology grasp arms and join in our Fraternity Song. The social justice warrior and the second amendment champion. The triple legacy and the first-generation student. The mathlete and the athlete. The try-hard and the should be trying harder. The engineer and the philosopher. And even in this tense political season, the social Democrat and the grass-roots Republican.

While I enjoy meeting the collegians of this Fraternity, of all of the people I've had the privilege to meet, I always look forward to conversations with the alumni of Theta Chi. This wasn't always the case, though. As a collegian, my chapter did its best to respect our elders, but we often took our alumni for granted. While, as a collegian, I always appreciated the brothers who came before me in the Fraternity, it was often at the bare minimum. At Fraternity tailgates I would long enough time speaking with the alumni, so as not to be rude, before I would rush off to defend my corn-hole crown. "This year, we raised \$2,000 for the USO, won homecoming, and earned highest GPA on campus. Now if you don't mind, I need to go." In simpler terms, I spoke, but never listened.





## “We will share stories of **times long forgotten**, of the **glory days**, of the **best times** of your life . . .”

As I stood talking with the Chapter President this last fall at my university's homecoming, I witnessed my exact words bounced back at me; a string of chapter updates followed by a cordial goodbye. As he ran off to make rounds with other people, I was left adrift in a sea of recent initiates I didn't know, scouring the horizon for a familiar face. I thought back to the alumni ceremony of my chapter and the words voiced to the penultimate graduates that day, “Where are our alumni?” It had now been replaced with a new question, “Where is my Fraternity?”

We've all walked through the chapter house. In the faces on the walls are the pristine quaff of the '50s, the mustaches of the '60s, the bell bottoms of the '70s, the mullets of the '80s, and the fashion dark age that was the '90s. When I visit chapter houses around the country, I always think the same thing: if only these composites could talk. If they could, we would hear about the countless road trips, the late nights porching, the formals, the nickname backstories, the intramural wins, the sorority serenades, and the unwritten history of each chapter. We might learn about the chapter's grand piano and its dubious origins. Of an entire chapter that signed up for WWII, leaving a note for the rival fraternity across the street to watch over the Theta Chi house while they fought for that rival's freedom. Of the time they wrecked Past Executive Director and National President Howard Alter's car or mistook George Kilavos, who at the time was National President, for a waiter at Convention. We would hear a man in his 70s talk about how he met the love of his life and lavaliered her before graduation, and then got promptly thrown in a nearby lake by the men who would be the groomsmen in his wedding.



In my chapter, there was a credo shouted by a handful of my brothers: “Do it for the story.” As Chapter Vice President, I would cringe every time I heard that phrase. As a Field Executive for the Fraternity, I still shake my head at the phrase. I never agreed with the boneheaded events that followed that phrase, but I understood the sentiment. We were young, untouchable, and kings of the world. We only had four years of college (five if you took a victory lap like me) and we planned on accumulating more memories than our heads could hold. We were imbued with a sense of fleeting glory as we progressed each year closer to the perils of adulthood.

Senior year came to a close and as was tradition, at our last chapter meeting, the seniors gave speeches. There were tales of grandeur, of heart-crushing failure, and of that one time in Vegas. In each was an inside joke, a lesson, and a memory cherished. As alumni, we all have these stories. Stories told too many times and stories untold because no one has taken the time to listen.

Homecoming is rapidly approaching and in it is an opportunity to rekindle the brotherhood of our Fraternity. To the collegians, I challenge you to take a break from the day's tailgate (there will be others) and meet the men who came before you. Listen, like I wish I had. I guarantee that you will not be disappointed. To the alumni, I will see you there. We will share stories of times long forgotten, of the glory days, of the best times of our life, and yes, of that one time in Vegas. ■







# Introducing the Kappa Chapter Series

### KAPPA ALPHA



#### Kappa Alpha/Spokane, WA

"I had one dream when I moved to Spokane, WA for school," explained Kappa Alpha Treasurer Spencer Morgan (2016), "to follow in the footsteps of my father [International Treasurer Herb Morgan] who started his own Theta Chi chapter at Theta Iota/UC-Santa Cruz. By bringing Theta Chi to his university, my dad helped establish Greek life at his alma mater."

Jon Jensen (2016), was living with Spencer when the idea of starting a fraternity surfaced and the two committed themselves to the group's success. On April 10, 2014, the Theta Chi Colony in Spokane, WA, became official. The following year did not come without challenges, but with help from past Field Executive Tom Sisco (Gamma Rho/Florida State 2013), the colony grew from 13 to 33 members by the end of spring 2015. On the night of October 10, 2015, 42 men became Charter Members of the Kappa Alpha Chapter, including two of the collegians' fathers.

In attendance representing International Headquarters was Chief Operating Officer Ray Vanlanot and Field Executive PJ Ricketson. "They are paving the way for Greek life," remarked Ricketson. "They're going to continue leading by example, showing the community all the positives that

Theta Chi and fraternities have to offer." The group plans to maintain their academic success and community involvement.

#### Kappa Beta/LIU Post

When Anthony Musacchio (2015) transferred to Long Island University Post from the University of Tampa, he immediately saw the need for a Theta Chi presence on campus. Musacchio worked to establish an interest

group, spending hours each day tabling in Hillwood Commons, a busy meeting area at LIU Post. His efforts led to 12 men colonizing on February 28, 2013. After two years of hard work, including a major drop in membership during the summer of 2015, the men of LIU Post were installed as the Kappa Beta Chapter on March 5, 2016. Field Executives Nike Hoke and Will Maher facilitated the men's initiation week and assisted with the Installa-

### KAPPA BETA



They are going to continue leading by example, showing the community all the positives that Theta Chi and fraternities have to offer.

tion. "By installing as one of the largest fraternities at LIU Post, these men have an unprecedented opportunity on this campus," explained Brother Hoke. "They are the kind of emerging leaders that campuses across the country strive to cultivate."

Presiding at the Installation was past International Vice President Joseph D'Amore, who took great pride in helping establish yet another chapter. The group's goals moving forward include growing to be the largest fraternity on campus, achieving the highest fraternity GPA on campus, and winning an Alter Award.

Theta Chi recently (re)colonized at the following universities:

- Epsilon Mu/Eastern Michigan
- Theta Psi/Wisconsin-Oshkosh
- SUNY-Oswego
- Salisbury University

Keep an eye on the website and the next issue of *The Rattle* for updates on the following (re)installations:

Kappa Gamma/North Florida  
Kappa Delta/UTEP  
Theta Tau/Western Michigan  
Epsilon Eta/IUP

## One of the key factors for successful and stable chapters in Theta Chi Fraternity is alumni support.

Even if it has been many years since your undergraduate fraternity experience, you still have invaluable insight and life experiences to share with the young men. The International Fraternity offers training and resources to any alumni who choose to volunteer.

If you no longer live near your alma mater, or your chapter is currently inactive, we still want you to get involved!

Here are just a few of the volunteer terms and opportunities in Theta Chi Fraternity.

**Chapter Adviser:** Main contact for chapter support. The first step, before attempting to recruit a full chapter advisory board, is to establish a chapter adviser as a trusted mentor for the group.

**Chapter Advisory Board (CAB):** A CAB is a group of mentors who provide guidance to the chapter officers on operational functions of a fraternity. They are separated from the business and financial side of the chapter, so that the students trust them and feel comfortable discussing the issues they face. CABs may contain non-members.

**Health and Safety Adviser:** This is the adviser who supports the Sacred Purpose movement, serves on the CAB, and works directly with the Vice President of Health and Safety. These volunteers are experts in the field of health and safety and they are not required to be members of Theta Chi.

**Faculty Adviser:** This is an employee of the university (in any capacity) who helps to advise the chapter. They may or may not be a member of Theta Chi. In most cases, the faculty adviser also serves on the CAB and assists with academic support and resources.

**House Corporation (Alumni Corporation):** a legally incorporated entity that typically manages the chapter house and certain aspects of the chapter's finances. Even if the chapter does not have a chapter house, they may have a "corporation" that helps manage the business aspects of the chapter.

**Alumni Association:** Alumni associations specialize in alumni relations. They plan and organize various alumni events. They may award scholarships to undergraduates but generally have no connection or business with the undergraduates/students. Chapters should focus efforts on creating and recruiting chapter advisory boards (CABs) and alumni corporations first before attempting to establish an association.

**Counselor:** This is a volunteer selected by the Executive Director of Theta Chi Fraternity who is trained by the International Headquarters staff to help recruit and support local advisers for our chapters.

**Educational Event Faculty:** There are several Theta Chi leadership events held around the country each year. The International Fraternity is always looking for talented presenters to share their experience and knowledge with our members.

Not sure what will be the best fit for you? Want to learn about other volunteer positions in Theta Chi Fraternity? Contact Bill Russo, Chief Programming and Volunteer Officer at 317-848-1856 or via email at [bill@thetachi.org](mailto:bill@thetachi.org) for more information.







Anthony Dominguez

# SACRED PURPOSE

OUR COMMITMENT  
TO ONE ANOTHER

THETA  
CHI



BY ANTHONY DOMINGUEZ, DIRECTOR OF EDUCATION

## Why me? Why now? Why Sacred Purpose?

My path back to the International Headquarters has been full of twists and turns but I have always known my work was not complete. After finishing my time on the road in 2010 as a Leadership and Education Consultant (now known as Field Executives), I wanted to give back to the Fraternity in any way I could. As soon as I began to work for my alma mater (the University of North Texas), I took on the role as the Delta Phi Chapter faculty adviser. Through my experience professionally and as a volunteer for Theta Chi, my true career path presented itself: education.

As I began to apply to Ph.D. programs across the U.S., I stumbled upon an email from Theta Chi Fraternity. There was an opening for a Director of Education who would be charged with not only creating educational curriculum, but also overseeing the Sacred Purpose program. Although this position did not fit into my plan to pursue a Ph.D. right away, the opportunity to give back to the Fraternity stuck with me. I wanted to contribute to our Sacred Purpose.

The mission of Sacred Purpose is simple: *Develop a deeper level of mutual caring for one another, in turn, strengthening the brotherhood and the community as a whole.* The word "Sacred" is used intentionally and is not to be taken lightly. **Our Founders took an oath to protect and support one another, with the understanding that today's members would continue their legacy.** Caring for others is the highest expression of courage and true friendship.

The Sacred Purpose movement is unique to Theta Chi and is at the forefront of making health and safety a priority among Greeks. The Vice President of Health and Safety serves an invaluable role in our organization. **Our Sacred Purpose is gaining traction and starting to be recognized by friends and allies in the general population. Critical conversations are being had in our chapter houses and on campuses across North America, and the Vice President of Health and Safety is keeping the dialogue going.** It is time to put an end to the negative perception fraternities have in the public eye and start a productive conversation on how Greek life can make a positive impact on its members and campuses as a whole.

The Vice President of Health and Safety is the embodiment of Sacred Purpose and his role is twofold. He should be a resource to the members for emotional, physical, and relational strength, while at the same time educating the chapter to do the same. He should cultivate working relationships with campus and community health and safety professionals who can support the mission. These trained professionals can assist in our efforts to host community-wide events to shed light on tough topics like sexual assault prevention, mental/physical health, or life safety best practices.

I am very very excited to serve as your Director of Education. If you have any questions regarding educational curriculum, Sacred Purpose, or our new all-encompassing membership program known as The Resolute Man, please email me at [Anthony@thetachi.org](mailto:Anthony@thetachi.org). I look forward to serving in this capacity for many years to come. Thank you for this opportunity!

**We cannot simply say we are "...ennobled by a high and sacred purpose..." We have to live it.**

Visit the Sacred Purpose blog at:  
<http://sacredpurpose.thetachi.org/>





# Theta Chi Housing Updates

Theta Chi Fraternity has announced that Robert Defenderfer (Zeta Beta/Adrian College 1988) has accepted the newly created Chief Housing Officer position. This executive level position will be responsible for launching an expanded international housing strategy and support services. The overarching goal of the new Chief Housing Officer is to provide leadership to the Fraternity and Norwich Housing Corporation (NHC) in taking a more proactive stance towards chapter housing.

Rob has been a volunteer for almost ten years with the Fraternity. He started as a Regional Counselor for Delta Upsilon/Arizona State. Since that time he has participated in many Mid-Year Leadership Conferences and is the only volunteer who has served all years on the faculty at the Initiative Academy (twice on the faculty and once as the lead facilitator). Rob has also volunteered as the Chapter Adviser for Iota Kappa/Northern Arizona.

Recently, the NHC furnished a number of \$500 scholarships to assist housing corporation officers in attending the 160th Anniversary Convention and 37th School of Fraternity Practices. The recipients, as well as all other Convention attendees, will have access to housing-focused programming during the event. Open forums with the Norwich Housing Corporation Board, information on the state of fraternity housing, sessions on how to engage alumni and keep your house corporation relevant, are just a few examples of the exciting programs offered at Convention.

Moving forward, Rob plans to continue the tradition of great work of the NHC. A major component of the NHC is its ability to lend money to house corporations for a variety of purposes.

NHC loans are only available to house corporations, which are alumni-led legal entities that have been established under the laws of a state for the purpose of owning and managing a chapter's house. House corporations must be associated with an active undergraduate chapter to be eligible for an NHC loan. The NHC offers three different types of loans, depending on the needs of the chapter:

**Traditional Mortgage Loans** are available for chapters looking to build, purchase, or renovate a chapter house. The NHC will also work in partnership with local banks that may also provide funds.

**Life Safety Loans** are offered at a low interest rate for financing housing upgrades that are necessary for the reduction of serious safety risks. The NHC determines whether or not proposed facility improvements qualify for financing under this loan program on a case-by-case basis. However, items that typically qualify include fire-suppressing sprinkler systems, range hoods, and fire alarm systems. For each loan request, the NHC has the absolute discretion to deny financing for items that are inconsistent with the nature and purpose of the Life Safety Loan Program.

**The Frederick W. Ladue Loan** is a short-term, unsecured loan that provides immediate financing in emergency situations (e.g. broken boilers, holes in the roof, etc.). Applications can be completed and reviewed quickly, and funds can be made available on short notice.



Rob Defenderfer

For additional information on the services available to house corporations, visit [www.thetachi.org/housing](http://www.thetachi.org/housing). Feel free to contact Brother Defenderfer with any additional questions at [RobD@thetachi.org](mailto:RobD@thetachi.org) or 317-848-1856. Pictured is the new Alpha Phi/Alabama chapter house.





# Theta Chi. Rebranded.

BY KRIS TAIBL, EDITOR

Since our founding in 1856, more than 180,000 Theta Chi Fraternity brothers have participated in and grown our traditions.

Although there are many symbols that Theta Chis have come to know and love over the years, we've never made a concerted effort to create a sophisticated visual identity for ourselves. Until now. Our visual identity, as represented throughout this issue of *The Rattle*, effectively demonstrates the Theta Chi experience. The design elements, including our logomark, color palette, and tagline, work together to embody the spirit of Theta Chi and to communicate that spirit to all audiences.

Simply put,  
our new  
identity  
elevates  
Theta Chi's  
brand on  
college  
campuses.







Figure 1. Old logo



Figure 2. Logomark



Figure 3. Wordmark



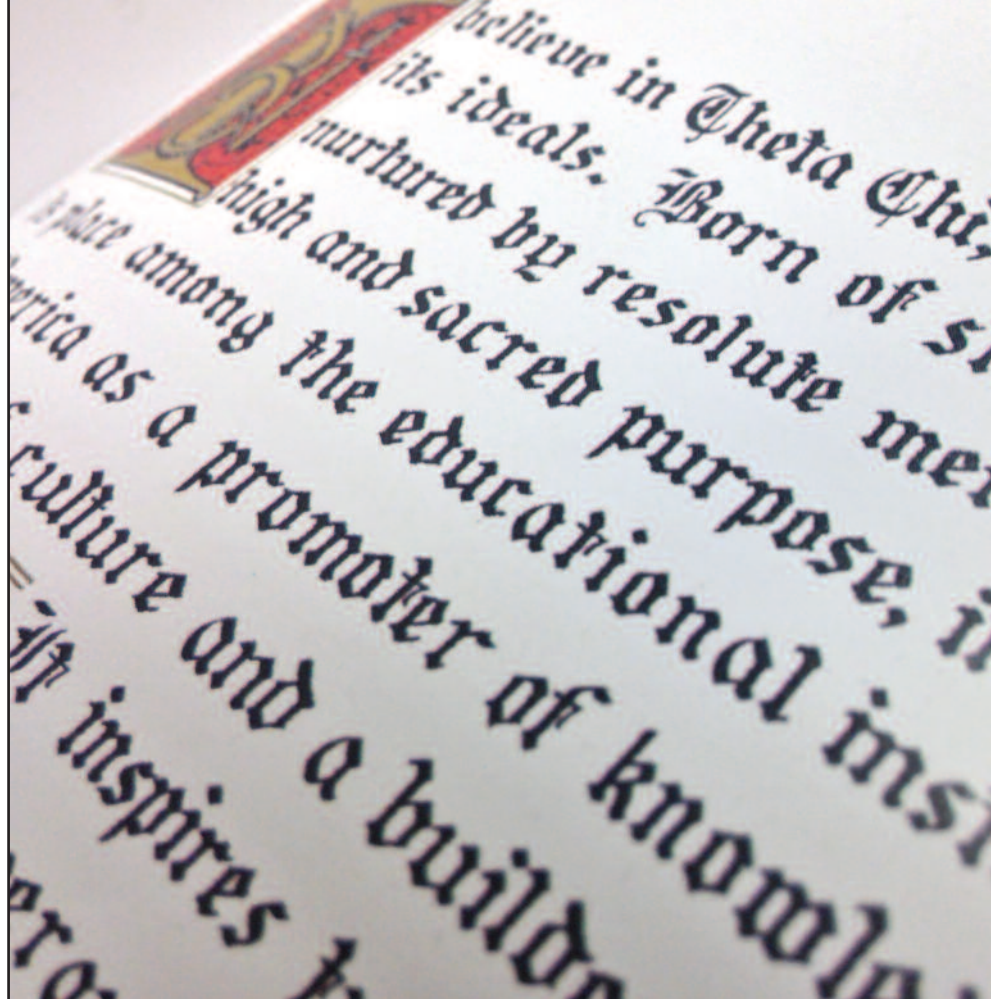
Figure 4. Logomark Centered



Figure 5. Shield



Figure 6. Coat of Arms



The visual standards and guidelines described throughout this section are intended to provide the framework for coherent communications that effectively represent Theta Chi. It is also our goal that the overarching theme honors Theta Chi's history, while maintaining organizational relevancy as a leader in the modern fraternity movement.

"Simply put, our new identity elevates Theta Chi's brand on college campuses," remarks International Marshal, Tait Martin. As a professional in the digital marketing and communications industry, Brother Martin understands the significance of this update. "For years, our collegians have been asking for the tools to help tell our Fraternity's story. Now our chapters have the resources to unify how we present Theta Chi internationally to our brothers, prospective members, and the wider public."

The logo that had been familiar with most members was developed internally in the early 1990s (Figure 1). For the time, it reigned as an effective and modern mark. Yet after two decades, the Fraternity saw

the need for an update. Theta Chi, therefore, enlisted the assistance of an Indianapolis-based marketing and design firm, RHB, and began the process.

Throughout 2015, the International Headquarters staff worked closely with RHB to perfect the visual update; each step being a meticulous overview, with countless revisions, discussions, and corrections. Yet from the beginning, the Fraternity knew that the visual update would need to be rooted in feedback from members. Input from numerous focus groups, made up of our diverse membership, was implemented into the decisions and direction. Brothers of all ages, alumni, and collegians alike, were tapped for their thoughts throughout the process. The result is a comprehensive update the Fraternity needed, and the brotherhood gets to enjoy for years to come.

In this section, we'll explore just some of the components that make up this thorough visual update.

### Logomark

The Theta Chi Fraternity logomark (Figure 2) consists of a wordmark (Figure 3) (the render-



## Now our chapters have the resources to unify how we present Theta Chi internationally to our brothers, prospective members, and wider public.

ing of the Fraternity's name in its distinctive typeface), a graphic element (or logo), and the Fraternity's tagline. This logomark has a number of iterations and is intended for all uses (Figure 4). The wordmark can be displayed alone, as well.

### Logo

The Theta Chi Fraternity logo includes a number of the Fraternity's most beloved and enduring symbols. In fact, the logo's design is based in large part on a radical simplification of our Coat of Arms. You'll notice the swords, the rattlesnake, the shield, and the colors from our original Coat of Arms, streamlined and modernized so that they will represent well across a number of different mediums.

The shield (Figure 5) anchors the symbols, evoking our military roots and highlighting the strength of the Theta Chi brotherhood. Instead of forming a Theta with the snake, it embraces the shield, its eye a focal point of the full-color version of the logo. Generally, the logo should appear with the wordmark. It should be noted that this new logo is not replacing the Coat of Arms. The Fraternity is elevating the reverence of the Coat of Arms, described later in this article.

### Tagline

"Resolute Men" has resonated with our members since Frank Schrenk penned the Creed nearly a century ago, and as a tagline, will continue to communicate the purposeful, determined, and unwavering character that defines us.

Combined, these three elements—the wordmark, logo, and tagline—form the core of the Theta Chi identity. The tagline serves also as the namesake for an all new initiative known as The Resolute Man, launching at this summer's Convention. Read more about this initiative on pages 16–19.

### Coat of Arms

The Fraternity's Coat of Arms is arguably Theta Chi's most ubiquitous symbol and also one of its most sacred. Care must be taken to ensure that the Coat of Arms is used in an appropriate way, however. When the Coat of Arms is reproduced in color, the bar dexter and alternate sections of the torse on which the eagle stands are military red, the helmet is silver, the scroll is gold with red lettering, and everything else is gold with black shading, as shown. The Coat of Arms should be used in the same manner that a university would use its

seal: on formal publications, for special events, and mostly on internal documents (bid cards, awards, and membership certificates, for example).

As a staff member who interacts with collegians on a daily basis, Field Executive Will Maher sees this as a way to give our Coat of Arms more prestige. "Before you would see our Coat of Arms on tank tops, or other non-professional items. Now our chapters can represent Theta Chi while also giving the Coat of Arms the reverence it deserves."

For a more detailed exploration of our new visuals, check out the *Visual Style Guide* and *Coherence Manifest* available in the resource section of [www.thetachi.org](http://www.thetachi.org). If you have any questions, please contact the Director of Communications Kris Taibl at [ktaibl@thetachi.org](mailto:ktaibl@thetachi.org) or by calling 317-848-1856.



# The RESOLUTE MAN

BY KRIS TAIBL, EDITOR

**The Resolute Man** represents the future of Theta Chi Fraternity. For the first time in our history, we are defining the desired outcomes of membership in a measurable fashion. These requirements provide a road map to get the most out of the Theta Chi experience. It also proves to be a useful tool in explaining to the general public the leadership skills and knowledge Theta Chi imparts to its members.

Today's generation of collegiate men crave direction. Not forceful direction, but a means to fulfilling a challenge and achieving a vision. They desire immersion into a kind of personal development not found in most classrooms. Collegians want to become what Theta Chi developed into **The Resolute Man**.

Over the course of the last 18 months, the Fraternity engaged a broad audience, including both collegiate and alumnus members, to develop the framework for this unique initiative. In early January, The Resolute Man was shared with our 2016 Chapter Presidents and was met with much praise, excitement, and very helpful feedback. Theta Chi is now pleased to share The Resolute Man with the Fraternity at-large.

The following pages outline the basic requirements for an individual to pledge the Fraternity and the requirements for initiation, where they become a Theta Chi collegian. Most excitingly, it illuminates a path by which initiated members can achieve a new distinction within Theta Chi Fraternity — The Resolute Man.

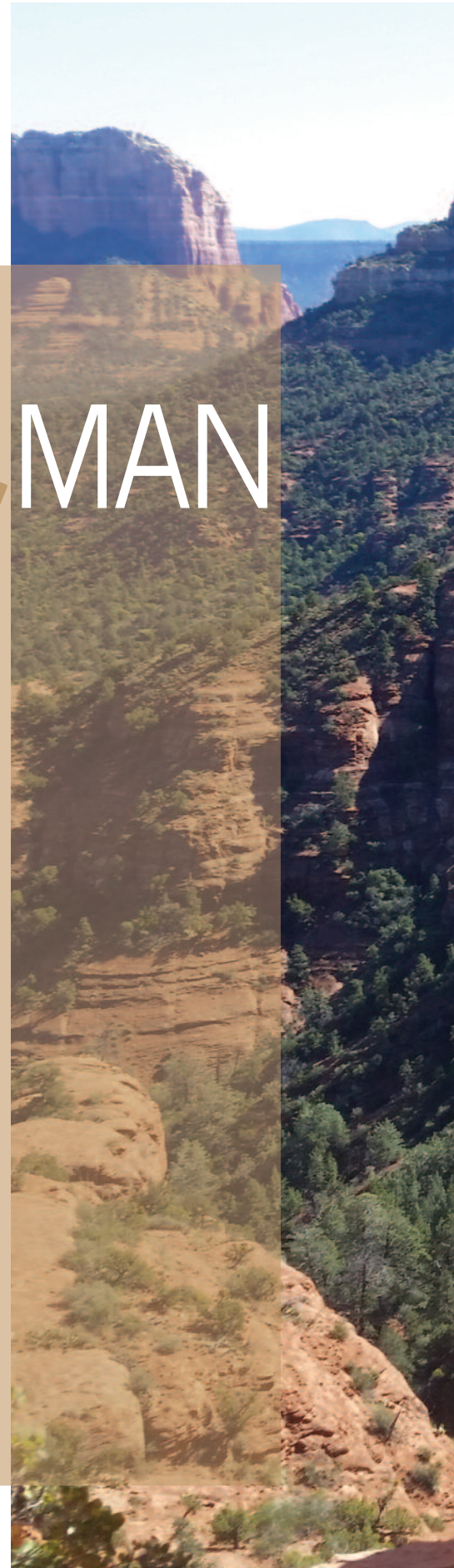
Initiated members, both collegians and alumni, will have their first opportunity to begin their journey toward becoming a Resolute Man during the 2016/2017 academic year.

The following pages will outline the path to becoming a Resolute Man.

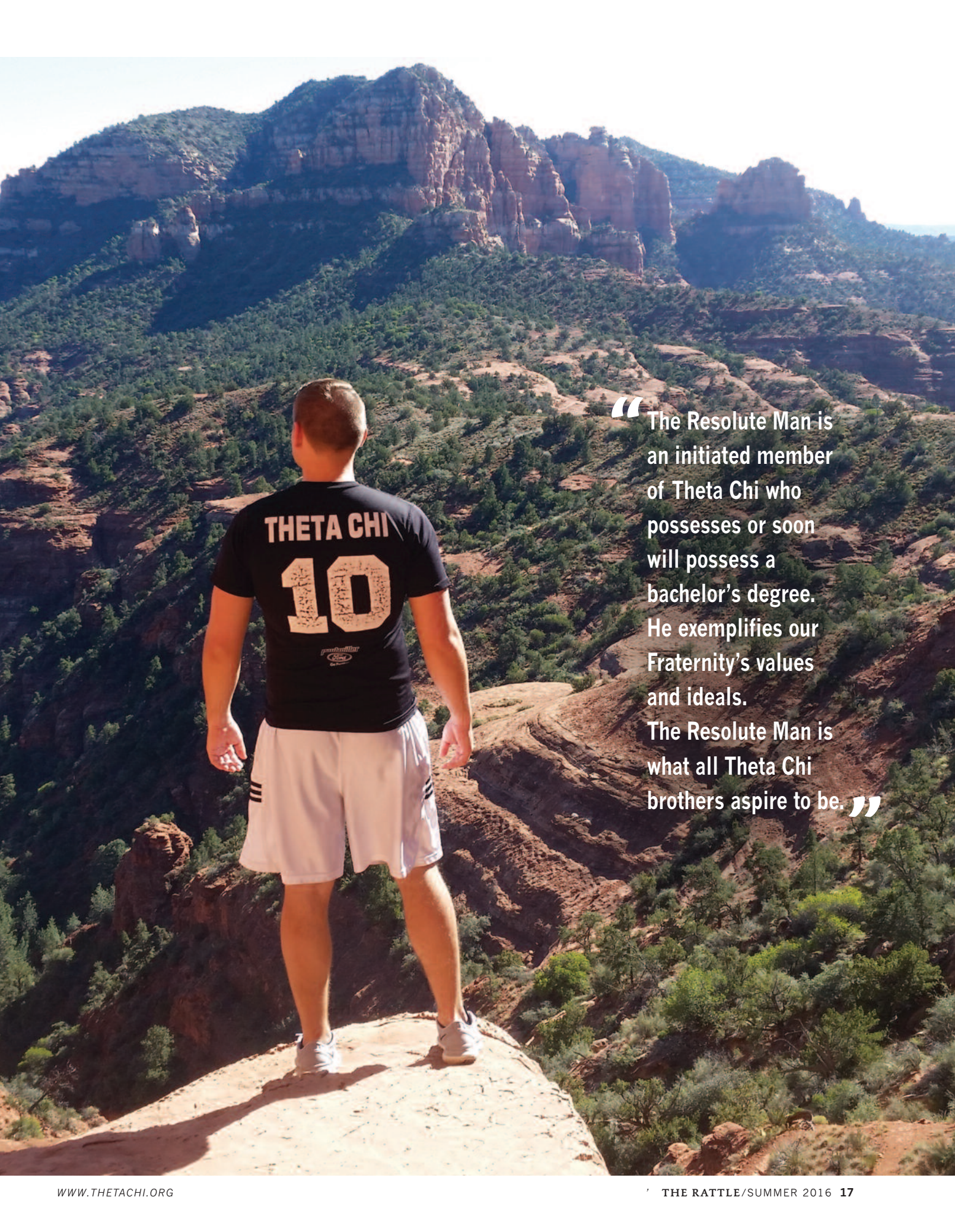
## **The Theta Chi Pledge**

*"The Theta Chi pledge is a man seeking to learn about Theta Chi Fraternity so that he may fully commit himself to becoming a brother and a Resolute Man. This person has expressed a genuine desire to pursue membership and has pledged to uphold the standards of Theta Chi Fraternity."*

In order to become a pledge of Theta Chi, one must be a male of honorable and







“The Resolute Man is an initiated member of Theta Chi who possesses or soon will possess a bachelor’s degree. He exemplifies our Fraternity’s values and ideals. The Resolute Man is what all Theta Chi brothers aspire to be.”





A collegian who becomes a Resolute Man will receive the insignia of The Resolute Man (pictured on the right).

moral character. He may not be a member of another fraternal organization similar in character to Theta Chi, and he must be the recipient of a formal invitation or bid.

For the full list of prerequisites, take a look at *The Resolute Man* guidebook, available on our website.

### The Theta Chi Collegian

*"The Theta Chi collegian is a brother who has accepted the obligations of membership and is striving to become a Resolute Man. He has completed all necessary obligations prescribed to a Theta Chi Fraternity pledge. The collegian is well versed in his Fraternity's history and traditions."*

This section lays out the requirements for initiation and is broken into two portions: education and experiences. Most of the educational requirements can be completed by attending an international or regional Theta Chi event. A major component of this section is the selection of a mentor. This individual will assist the pledge, and eventual collegian, on his journey to become a Resolute Man. The mentor will provide valuable feedback and hold the member accountable to The Resolute Man requirements.

### The Resolute Man

*"The Resolute Man is an initiated member of Theta Chi who possesses or soon will possess a bachelor's degree. He exemplifies our Fraternity's values and ideals. The Resolute Man is what all Theta Chi brothers aspire to be."*

A Theta Chi collegian is eligible to become a Resolute Man through a completion of five competency areas, as well as a final application. Collegians may complete the requirements of these five competency areas consecutively or in any order. Alumni desiring to become a Resolute Man may do so by completing alternative requirements addressed on the next page.

A collegian who becomes a Resolute Man will participate in a special Ritual Ceremony during his final academic term. During this ceremony, he will receive the insignia of The Resolute Man: a diamond-shaped guard that attaches to his Badge (pictured above). Once received, he is entitled to wear the guard of The Resolute Man for life so long as he remains a member of Theta Chi Fraternity in good standing.

### Area I: Leadership and Teamwork Development

This area requires the collegian to work with and for others to achieve great things. He will develop better self-awareness and recognize strengths and weaknesses as a

leader. Some examples of the desired outcomes in this section include attending Theta Chi leadership events, holding an elected office in the chapter, or participating on an intermural sports or academic team.

### Area II: Alma Mater First

By following Theta Chi's Maxim, "Alma Mater First, Theta Chi for Alma Mater," collegians will develop life-long relationships with their college or university. This relationship will coincide with academic excellence. Attending a presentation on how to remain involved as an alumnus, as well as maintaining a GPA above the all-men's-average, are examples of the expectations for this section.

### Area III: Social Competence and Development

In this section collegians will learn how to become more comfortable in social settings. They will practice public speaking and gain an understanding of professional standards and behaviors. This area involves recruitment, with attendance at a fraternity recruitment seminar or program being one of the requirements.

### Area IV: Life After Graduation

This area prepares collegians to leave college and become successful in their respective fields. They will be ready to thrive in a highly competitive workforce, successfully navigating through interviews and profes-



# BE the RESOLUTE MAN



sional development opportunities. Attendance at professional dress seminars, interview skill workshops, and financial literacy sessions are some of the expected components.

## **Area V: Theta Chi For Life and The Assisting Hand**

This section encourages the collegian to possess skills above and beyond that of an ordinary fraternity man. The Sacred Purpose Movement and other Theta Chi Fraternity partnerships are the focus throughout this area. Ritual review, philanthropic, community, and educational sessions on sexual assault, drug/alcohol abuse, and mental health are some of the requirements. Additionally, participants learn how they can make a commitment to Theta Chi for their entire life.

## **Application Procedures**

In order to become a Resolute Man, a collegian must submit an application to the International Headquarters at least two months prior to the intended date of his chapter's Resolute Man Ceremony. Application information will be available at [www.thetachi.org](http://www.thetachi.org).

## **From Alumnus to Resolute Man**

Alumni may also pursue The Resolute Man distinction through two paths: volunteer service or support. For both of these, the alumnus must be an initiated member of Theta Chi Fraternity in good standing, possess a bachelor's degree, and have a nomination accepted and approved.

The volunteer path includes educational and experiential requirements. Much like the Theta Chi collegian, the educational

requirements for an alumnus can be completed by attending international or regional Theta Chi events. The experiential requirements involve service from the alumnus at the chapter, International Headquarters, or university level.

For the alumnus who elects to become a Resolute Man by means of support, he is expected to meet a lifetime giving level equivalent to that of the Chairman's Council. Note that the educational component is still required for this alumnus.

## **Why Resolute Man?**

In an era where many external stakeholders (campus administrators, parents, non-members, the media, and the general public) are questioning the value of fraternities, Theta Chi is excited to launch a program designed to answer that very question. Readers of *The Rattle* will likely be able to cite the numerous benefits of Fraternity membership, but how does Theta Chi better articulate and replicate the many positives the Fraternity brings to its members?

For more than 160 years, Theta Chi brothers have benefited from the acquisition of lifelong friends, numerous leadership experiences, life skills, and ideals that Fraternity membership instills. It is difficult to find an alumnus of our Fraternity who cannot point to many life lessons acquired as a result of his collegiate experience.

Prior to the creation of Resolute Man, Theta Chi members were able to speak of these benefits through anecdotal stories. While the Fraternity's regional and international events have provided a deliberate and

focused curriculum for many years, the skills acquired at the chapter level have often occurred by happenstance.

Resolute Man illuminates the path forward so our members may pursue the same skills over 180,000 alumni have acquired during their collegiate experience, but in a much more deliberate fashion. Not only does Resolute Man serve as a guide to a more enriching Theta Chi experience, it also provides a mechanism for the Fraternity to recognize the men who have followed through on that pursuit. Collegians who have completed all of the requirements are eligible to be recognized as Resolute Men in a newly minted ritual ceremony.

The number of Resolute Men recognized per year will serve as a metric that will inform Fraternity leaders and our key stakeholders as to organizational effectiveness. Through the Resolute Man, Theta Chi Fraternity seeks to advance and better communicate the Fraternity's ideals, not only to our members and friends, but to the population at-large. As more and more Theta Chis accept the Resolute Man challenge, the Fraternity hopes to further advance fraternity culture and build better friends, better students, and better men.

A complete summary and rollout of The Resolute Man will occur at this summer's Convention. For more information, contact Director of Education, Anthony Dominguez at [anthony@thetachi.org](mailto:anthony@thetachi.org) or 317-848-1856. ■





Brother Sasser pledges his support to ensure the future success of the Presidents Conference with International Chaplain Darick Brown.



Brothers sign thank you letters to the Cornerstone donors and Chapter Presidents take their oath of office.



# Cornerstone

Every Chapter • Every President • Every Year



# \$1,519,525

in pledge commitments have been made, completing the campaign.

## History is made!

The Foundation Chapter is proud to announce completion of Theta Chi's Cornerstone Campaign to endow the Sasser Presidents Conference! As of January 15, 2016, the campaign raised \$1,519,525 in tax-deductible gift commitments.

Two hundred and forty-six brothers from 94 chapters gave of their personal wealth in order to pave the way for the next generation of Theta Chis. Furthermore, the participants of the 2015 and 2016 Presidents Conference made their own pledge commitments in order to ensure this conference is a staple in our Fraternity.

In 2014, The Foundation Chapter of Theta Chi embarked on a mission to support the top leaders in our Fraternity. The Presidents Conference rose to become the Fraternity's premiere leadership experience, providing our Chapter Presidents with the training needed to succeed in today's college environment. The decision was made to embark on a capital campaign aimed at endowing the conference with \$1,500,000 in tax-deductible gifts. The gifts made to Cornerstone will alleviate financial burden on our Chapter Presidents for generations to come.

On January 8, 2016, 153 Colony and Chapter Presidents convened for the inaugural Sasser Presidents Conference in Carmel, IN.

The annual conference, formerly known as the Deranian Presidents Conference, is the Fraternity's premiere leadership experience, providing our Chapter Presidents with the training needed to succeed in today's college environment. During the keynote speech from Dollar Tree CEO, Bob Sasser (Gamma Rho/Florida State 1973), he shared that "in business, at the front of your store, there is an open sign and a closed sign. When you are a leader there is no closed sign."

To our brothers who gave in support of the Cornerstone Campaign, thank you! To those of you who have given to The Foundation Chapter for many years, THANK YOU!

There is much to celebrate with the completion of Cornerstone, but this is just the beginning. This campaign saw thirteen donors make commitments of \$25,000 or more, previously unseen in our Fraternity. Furthermore, the Cornerstone lead gift of \$250,000 is the largest cash gift in the history of our organization. Ultimately, all 246 donors answered the call to support **Every Chapter, Every President, Every Year.**

The Cornerstone Campaign is complete, but there is much more support needed for our collegiate brothers. Read the pages ahead to learn more about how you can immediately impact the lives of our brothers by supporting The Foundation Chapter of Theta Chi!

... in business, at the front of your store, there is an open sign and a closed sign. When you are a leader there is no closed sign.

—Bob Sasser (Gamma Rho/Florida State 1973)



## Thank You Donors of the Cornerstone Campaign! (As of January 15, 2016)



*Pam and Bob Sasser with International President Dick Elder during the Sasser Presidents Conference*

### Cornerstone Visionary

Bob and Pam Sasser

### Cornerstone Architect

Carlton F. Bennett (ZII/Old Dominion)  
Dennis A. Cardoza (AΨ/Maryland)  
Kip Cornett (ZP/Kentucky)  
Bill Dahlgren (BA/Akron)  
Stephen J. Macri (AΩ/Lafayette)  
Jeffrey W. Mahony (BA/UCLA)  
Herb Morgan (ΘI/UC-Santa Cruz)  
M. Lindsay Olsen (ΔΨ/Kansas)  
Philip P. Pappas II, Ph.D.  
(BX/Allegheny)  
Bill Patterson (ΔΨ/Kansas)  
John R. Vispo (ZII/Old Dominion)  
Anonymous Donor

### Cornerstone Designer

Jay Bradshaw (ZII/Old Dominion)  
Joseph S. Couch (X/Auburn)  
Jack S. Cowan (IΨ/Puget Sound)  
M. Walt Davis (ΔY/Arizona State)  
Sean M. DonCarlos (TY/Bradley)  
Dick Elder (IΘ/San Diego State)  
Fred R. Friswold (AII/Minnesota)  
Arnold L. Hansmann (BΦ/Nevada)  
Mark Hillis (IΨ/Florida State)  
Eric R. Jayaweera (ΘI/UC-Santa Cruz)  
Kevin R. Mack (ZII/Old Dominion)  
Peter S. Mackey (AΦ/Alabama)  
Tait J. Martin  
(HO/Northwestern State)  
Vance K. Maultsby (ΔΦ/North Texas)  
Kirby V. Montgomery (AΦ/Alabama)  
Steven J. Mudder (IΨ/Florida State)  
Dru A. Neikirk (IY/Bradley)  
William A. Priebe  
(EII/Northern Illinois)  
Michael D. Roe (AY/Nebraska)  
Kia Sepassi (BI/Arizona)  
Scott M. Thomas (ΔK/Ball State)  
Charles J. Vanstrom  
(IΓE/Western State)  
Christopher J. Vesey (TK/Miami (OH))

### Cornerstone Surveyor

Jeffrey C. Anderson (BA/UCLA)  
Thomas L. Axon (ΔK/Ball State)  
Nicholas Balogh (Δ/RPI)  
Khaatim J. Boyd (ΔΩ/Ripon)  
Chance A. Brown  
(ΘH/Sam Houston State)

Darick H. Brown (HIΓ/Morehead State)  
Allan J. Calarco (HII/East Stroudsburg)  
Peter C. Cappas  
(BP/Illinois Wesleyan)  
Frederick A. Cimaglio  
(EII/Northern Illinois)  
Joe L. Clack (HΣ/Arkansas Tech)  
Darron W. Cross (ZII/Old Dominion)  
Joseph R. D'Amore  
(HII/East Stroudsburg)  
Gene F. Dose (ΔΘ/Toledo)  
Richard S. Doyon (IΓ/Maine)  
Zachary D. Edwards (ΘK/Texas Tech)  
Edward A. Eickhoff (HΦ/Oakland)  
Lucas T. Elgie (AΦ/Alabama)  
David W. Finneran (AΞ/Delaware)  
Michael G. Friedel (ZΛ/Parsons)  
Rayburn A. Fulks (ΔΦ/North Texas)  
Mark T. Geenen (HΩ/Chico State)  
Ryan P. Gerstner (ΔΨ/Kansas)  
Joseph T. Gilbert (AΔ/Purdue)  
Edward Gschneidner (AM/Iowa State)  
Christopher J. Hackett  
(ΘI/UC-Santa Cruz)  
Brian K. Hall (ΘH/Sam Houston State)  
James D. Hardwick  
(Φ/North Dakota State)  
David S. Harry (ET/Stephen F. Austin)  
James R. Henkel  
(ZΣ/Wisconsin-River Falls)  
Warren E. Hoffman (AI/Indiana)  
Carl J. Johnson (ZE/Long Beach State)  
Michael J. Kistler  
(EY/Central Michigan)  
Richard L. Knapp (AΔ/Purdue)  
Tyson Y. Lai (ΘI/UC-Santa Cruz)  
Sean K. Lloyd (ΔP/NC State)  
Matthew L. Lotspeich  
(EΦ/Central Missouri)  
Eric M. Matheny (ΔY/Arizona State)  
Jason T. Mathwig  
(ΘΨ/Wisconsin-Oshkosh)  
David A. May  
(ZΣ/Wisconsin-River Falls)  
Michael J. Mayer  
(EΦ/Central Missouri)  
James S. McEachern  
(BΨ/Presbyterian)  
James J. McMahon  
(ZE/Long Beach State)  
Jim Melvin (E/WPI)

Douglas A. Miller (ZB/Adrian)  
James J. Moylan (IΛ/Denver)  
Peter J. Mulvihill (E/WPI)  
Paul R. Norstrom (AII/Minnesota)  
Patrick T. O'Connor (X/Auburn)  
Cory D. Olson (BK/Hamline)  
Joshua J. Palleon  
(ΘΨ/Wisconsin-Oshkosh)  
William W. Palmer (BA/UCLA)  
Richard I.L. Partridge  
(Θ/Massachusetts)  
Scott G. Passmore (P/Illinois)  
William L. Pollock  
(BP/Illinois Wesleyan)  
David P. Poteat  
(ΘΨ/Wisconsin-Oshkosh)  
Mickey R. Price (ZΨ/Western Illinois)  
Donald H. Ramsden  
(IΨ/Florida State)  
Brian A. Rinker (P/Illinois)  
Douglas W. Robbins (BA/UCLA)  
Thomas J. Rossley (IT/Drake)  
Timothy K. Sanders  
(EΦ/Central Missouri)  
Douglas G. Schemenauer  
(EΦ/Central Missouri)  
J. Barry Schrenk  
(ΘE/Kennesaw State)  
Richard L. Shirley (AI/Indiana)  
Robert H. Stine (ΔΛ/Ball State)  
Gates M. Stoner (BI/Arizona)  
B. Harry Strack (X/Auburn)  
Chad R. Strelow  
(ΘΨ/Wisconsin-Oshkosh)  
Craig J. Strelow  
(ΘΨ/Wisconsin-Oshkosh)  
James C. Sun (BA/UCLA)  
William H. Suter (BΔ/Rutgers)  
Tony Tetley (EΦ/Central Missouri)  
Thomas Nathan Thompson  
(P/Illinois)  
Philip C. Thornton  
(IΘ/San Diego State)  
Thomas R. Van Cleave  
(BP/Illinois Wesleyan)  
Bradly L. Vance (ZB/Adrian)  
Dennis J. Vonasek  
(Φ/North Dakota State)  
Kristopher J. Wolfe  
(IB/Missouri State)  
David W. Wurth (ΔΨ/Kansas)  
Randy R. Zimmerman  
(ΔI/Northwestern)

### Cornerstone Builder

Douglas Allen (ΔB/Georgia)  
George H. Caspar (Σ/Oregon State)  
David R. Clonts (AN/Georgia Tech)  
Michael R. Cole (ΔΦ/North Texas)  
Dennis Demoss (BO/Cincinnati)  
Isaac Andres Figueroa (BI/Arizona)  
JD Ford (BA/Akron)  
Brett G. Gillies (ΔP/NC State)  
Jamie Gregory (AΨ/Maryland)  
Royce A. Keehr  
(ZΣ/Wisconsin-River Falls)  
Christopher H. Kennedy (ΔΨ/Kansas)  
Richard W. Leland  
(HII/East Stroudsburg)

Robert C. Lockwood  
(BΞ/Birmingham Southern)  
Ted McKenna (BP/Illinois Wesleyan)  
Terrell Mizell (ZII/Old Dominion)  
Gary E. Mouden  
(IΓΦ/Nebraska Wesleyan)  
F. Barry Nelson (Y/NYU)  
Matthew J. Olson (IH/Pacific)  
Ron Ramos (IΘ/San Diego State)  
Kevin F. Reilly (IΓ/Florida)  
Dave Rush (AM/Iowa State)  
David J. Scotto (HΩ/Chico State)  
George H. St. George (IΠI/Buffalo)  
Ed Stone (HΩ/Chico State)  
Jeffrey R. Storey  
(ZΣ/Wisconsin-River Falls)  
Buzz Stroud (ΔA/Linfield)  
Joel H. Swank (HΛ/Virginia Tech)  
Joe Wachs (ΔK/Ball State)  
Murray B. Wachtel  
(ZΣ/Wisconsin-River Falls)  
John M. Wenger (HΩ/Chico State)  
Wes Wicker (AΦ/Alabama)  
Gregory J. Wilson (B/MIT)  
Bobby K. Woods  
(HO/Northwestern State)

### Cornerstone Supporter

Lorne Adrain (H/Rhode Island)  
Creig L. Andreasen (AII/Minnesota)  
Dustin E. Bartley  
(IΓΦ/Nebraska Wesleyan)  
James A. Baumann (ΔΨ/Kansas)  
Beta Chapter (B/MIT)  
Ketan Bhirud (BA/UCLA)  
Thomas M. Bongi (ZΦ/Cal Poly)  
Bradrick S. Burk (ΔK/Ball State)  
Robert N. Cleaver  
(BH/Washington College)  
Christopher N. Conley (BA/Akron)  
Layton Jacob Cox (BI/Arizona)  
Shade A. Dufrene  
(HO/Northwestern State)  
Kelly R. Dunn (AII/Minnesota)  
Dustin D. Dwyer (IΛ/Longwood)  
Robert F. Ferrara (Θ/Massachusetts)  
John P. Girardi (O/Richmond)  
Christopher Graham  
(ZE/Long Beach State)  
Jereme W. Grinslade (ΔK/Ball State)  
Christopher L. Hage (P/Illinois)  
John E. Hagefstration (AΦ/Alabama)  
H. Glen Harckum  
(EΦ/Central Missouri)  
Randy J. Harrington  
(IΓΦ/Nebraska Wesleyan)  
Nathaniel S. Hibben (AM/Iowa State)  
Ric Holderith (TK/Miami (OH))  
Jason E. Howeth (ΔΦ/North Texas)  
Charles G. Hubbard (BE/Montana)  
John R. Jordan (AΦ/Alabama)  
Randall Konstans  
(BP/Illinois Wesleyan)  
Arthur M. Krasilovsky  
(AT/Ohio University)  
Curtis J. Lesmeister  
(Φ/North Dakota State)  
Richard L. McCauley (ΔK/Ball State)  
Don R. Nesbitt (BI/Arizona)



## GIVING LEVEL KEY

**Visionary** \$250,000

**Architect** \$25,000+

**Designer** \$10,000-\$24,999

**Surveyor** \$5,000-\$9,999

**Builder** \$2,500-\$4,999

**Supporter** \$1,000-\$2,499

**Friends of Cornerstone** \$999 and below

Earl Nolting (AI/Indiana)  
Joseph S. O'Brien (TP/Florida State)  
Carl A. Pacubas (IB/Missouri State)  
James W. Pellot (TK/Miami (OH))  
Douglas R. Pfitzenmaier (ZK/Ohio Northern)  
Lahrye Radford (TP/Florida State)  
James R. Reid (ΔΦ/North Texas)  
Terrance Robinson (ZB/Adrian)  
Bill Russo (EΞ/Clarion)  
Colin J. Schulte (BK/Hamline)  
Joseph N. Silva (HΩ/Chico State)  
Craig Simpson (ΔΠ/Indiana State)  
Bill Stephenson IV (ΘB/New Jersey)  
Triangle Society (ΔK/Ball State)  
Raymond W. Vanlanot (AI/Indiana)  
Vernon F. Vikingson (AP/Washington)  
James A. Viola (HII/East Stroudsburg)  
Kyle J. Weaver (ZΣ/Wisconsin-River Falls)  
Joel M. Wendland (ZB/Adrian)  
Tyler J. Whaley (ZE/Long Beach)  
Douglas L. White (ΘH/Sam Houston State)  
William R. Wilson (BX/Allegheny)  
Roy C. Young (O/Richmond)  
Steven L. Yount (EΦ/Central Missouri)  
Al Zale (ΓΘ/San Diego State)  
John E. Zydron (O/Richmond)

## Friends of Cornerstone

James B. Amann (Φ/North Dakota State)  
Kenneth C. Arena (ΓII/Buffalo)  
Kenneth F. Beckley (Γ/Maine)  
Dan T. Brink (BX/Allegheny)  
David M. Callahan (ΔΓ/WV Wesleyan)  
Philip S. Carroll (Δ/RPI)  
C. Bernie Clark (BX/Allegheny)  
Gene Clark (HI/Morehead State)  
James M. Cox (AΔ/Purdue)  
James E. Davis (ΔΨ/Kansas)  
Rich W. Falotico (ΔO/Gettysburg)  
David R. Farmer (ZII/Old Dominion)  
Michael R. Frueh (BO/Cincinnati)  
George C. Garikes (AΦ/Alabama)  
Brian T. Gegel (BP/Illinois Wesleyan)  
Gary N. Gildersleeve (AΩ/Lafayette)  
Leigh H. Hickcox (E/WPI)  
Stuart D. Hines (BP/Illinois Wesleyan)  
Frank W. Hodgdon (AE/Stanford)  
Rob Holroyd (TP/Florida State)  
James G. Hunt (ZII/Old Dominion)  
Marvin D. Juliar (AII/Minnesota)  
Michael P. Loizides (ZII/Old Dominion)  
Robert F. McCabe (AB/Pittsburgh)  
Robert A. McLain (ZII/Old Dominion)  
James C. Meyer (EII/Northern Illinois)  
Gregory A. Parrott (Σ/Oregon State)  
Tad H. Randolph (ΔII/Indiana State)  
Andrew J. Rubinacci (TP/Florida State)  
James A. Schappert (BΔ/Rutgers)  
Edward Shames (ZII/Old Dominion)  
Kenneth R. Snyder (TP/Florida State)  
Peter J. Stratton (BI/North Dakota)  
Jon B. Suzuki (BP/Illinois Wesleyan)  
John G. Teeuwen (ZII/Old Dominion)  
Edmund G. Tubel (T/Florida)  
Edwin M. Undercuffler (BΣ/Lehigh)  
Daniel R. Wagoner (ZII/Old Dominion)  
Grant H. Williams (X/Auburn)  
Harold J. Winer (ZII/Old Dominion)

# CHAPTER CHALLENGE

The chapters listed below played a leading role in shaping the future of Theta Chi, donating \$10,000 or more to the Cornerstone Capital Campaign.

- |  |   |
|--|---|
| #1 Gamma Rho/Florida State<br>\$275,352                          | #20 Beta Iota/Arizona<br>\$19,750   |
| #2 Zeta Pi/Old Dominion<br>\$83,800                              | #21 Delta Phi/North Texas<br>Zeta Sigma/Wisconsin-River Falls<br>\$19,500   |
| #3 Delta Psi/Kansas<br>\$64,550                                  | #23 Beta Rho/Illinois Wesleyan<br>\$19,240  |
| #4 Theta Iota/UC-Santa Cruz<br>\$50,000                          | #24 Rho/Illinois<br>\$19,000  |
| #5 Beta Alpha/UCLA<br>\$48,185                                   | #25 Alpha Pi/Minnesota<br>\$17,275  |
| #6 Beta Lambda/Akron<br>\$39,100                                 | #26 Theta Eta/Sam Houston State<br>\$16,000   |
| #7 Alpha Phi/Alabama<br>\$29,800                                 | #27 Delta Upsilon/Arizona State<br>\$15,000   |
| #8 Epsilon Phi/Central Missouri<br>\$29,500                      | #28 Eta Omicron/Northwestern State<br>\$14,020  |
| #9 Alpha Psi/Maryland<br>\$27,500                                | #29 Eta Pi/East Stroudsburg<br>\$14,000   |
| #10 Delta Kappa/Ball State<br>\$26,500                           | #30 Eta Omega/Chico State<br>\$13,505   |
| #11 Beta Chi/Allegheny<br>\$26,250                               | #31 Zeta Beta/Adrian<br>\$12,500  |
| #12 Alpha Omega/Lafayette<br>\$25,100                            | #32 Alpha Iota/Indiana<br>Zeta Epsilon/Long Beach State<br>\$12,000   |
| #13 Zeta Rho/Kentucky<br>Theta Psi/Wisconsin-Oshkosh<br>\$25,000 | #34 Phi/North Dakota State<br>\$11,250  |
| #15 Gamma Kappa/Miami (OH)<br>\$23,500                           | #35 Epsilon/WPI<br>\$10,250   |
| #16 Gamma Theta/San Diego State<br>\$20,500                      | #36 Alpha Delta/Purdue<br>\$10,025  |
| #17 Chi/Auburn<br>\$20,300                                       | #37 Alpha Upsilon/Nebraska<br>Beta Phi/Nevada<br>Gamma Epsilon/Western State<br>Gamma Psi/Puget Sound<br>\$10,000 |
| #18 Epsilon Pi/Northern Illinois<br>\$20,100                     |   |
| #19 Gamma Upsilon/Bradley<br>\$20,000                            |   |

*totals as of January 15, 2016*

# The Excellence Fund of Theta Chi

Your chance to have an immediate impact on Theta Chi.

**In the past ten years alone, The Foundation Chapter has awarded more than \$4,000,000 in academic scholarships to our own members.**

The Foundation Chapter subsidizes numerous Theta Chi leadership training programs, providing these opportunities for our students at low or no cost. In 2016, the decision was made to name the Annual Fund the Excellence Fund. We believe the name Excellence Fund better reflects what your gift accomplishes in Theta Chi: aiding your brothers to strive for excellence. We want Theta Chi to remain a top tier fraternity, continually striving for excellence in all areas. As Aristotle once said: "We are what we repeatedly do. Excellence, then, is not an act, but a habit." So should your continued support of the Excellence Fund. Your lifetime giving in Theta Chi remains the same; no other aspects of supporting The Foundation Chapter have changed.



## TANNER HILTON (Eta Upsilon/Texas A&M 2017)

"The Sasser Presidents Conference was a great experience for all of us in attendance. The Conference instilled in me a sense of confidence, which is absolutely necessary to radiate as a leader. Our lessons in public relations especially made me feel prepared to represent my chapter well during our next big event. I want to express a special thanks to all of our Cornerstone donors who made such a great program possible. A resonating thank you is in order to Mr. Bob Sasser for his generous contribution, as well as his time with us. It was a true privilege to spend the weekend with some of the nation's most capable leaders."





## Gifts to the Excellence Fund are **tax-deductible.**

The Foundation Chapter seeks to enrich the lives of our brothers through support of leadership education and academic scholarships. Brotherhood and leadership are critical pieces of society, without them cultures and civilizations become stagnant. Theta Chi Fraternity provides five unique leadership training opportunities for our men to grow as leaders. We are providing our brothers with the skills necessary to not only succeed in college, but we are also providing them with skills to be our future civic leaders. As brothers we should be proud of the leadership opportunities we provide our men. When considering the education you received from Theta Chi during your college years, what other time in your life were you provided a multi-day formal leadership training event? Perhaps you attended a seminar for work years ago. For most of us, Theta Chi was the only formal leadership training we received in our entire lives. With this in mind, we should be proud as we are preparing our brothers to become the future leaders the world needs.

The Excellence Fund covers the operational expenses of maintaining these programs, our development needs, and the distribution of our scholarship program. The Foundation Chapter is the reason we can subsidize these amazing leadership events and scholarships.



You might ask yourself, “Well, what can I do to help Theta Chi?” You can do so by supporting the Excellence Fund every year. With this issue of *The Rattle* in your hands there is an envelope for supporting Theta Chi. Make your **tax-deductible** gift out to “The Foundation Chapter of Theta Chi” with the memo line: Excellence Fund. Place your gift in the envelope, put a stamp on the envelope, and place it in your outgoing mail. We thank you in advance!

The greatest need of Theta Chi today is your annual, generous support for the Excellence Fund.

Want to give Theta Chi more support? Become a monthly contributor to the Excellence Fund! Contact The Foundation Chapter at 317-848-1856 or [ihq@thetachi.org](mailto:ihq@thetachi.org) for more information about monthly giving.



### KOFI LADANS (Beta Omicron/Cincinnati 2017)

“I can’t thank The Foundation Chapter and our donors enough for their support. My journey began with my attendance at the Initiative Academy. I don’t come from a family that can fund these types of opportunities. For The Foundation Chapter to grant me a scholarship for Initiative Academy and other events was huge. Attending Initiative Academy at no cost inspired me to bring my very best back to my chapter. After being elected Chapter President, I attended the Sasser Presidents Conference, which had a great impact on my leadership style. Being able to interact and learn from other Chapter Presidents helped tailor my leadership skills to my own chapter. Many of the Presidents I met during the Presidents Conference were the same brothers from my small group at Initiative Academy!”

# Planned Giving and the Legacy Society

Making a planned gift to The Foundation Chapter ensures that our values live on forever.

The Legacy Society is made up of men who make a planned gift to Theta Chi through a consideration for the Fraternity in their estate plans. Brother Howard Alter (Omega/Penn State 1941) left the majority of his estate to Theta Chi, which continues to make a profound impact on the Fraternity. Planned gifts have been transformative for Theta Chi, most notably the Sherwood and Janet Blue Memorial Scholarships. Sherwood Blue (Alpha Iota/Indiana 1926) bequeathed Theta Chi the majority of his estate, serving as the corpus of the Blue Memorial Scholarships.



The Blue Family legacy has changed the face of Theta Chi and impacted the lives of thousands of brothers. Estate gifts come in many forms, be it a gift of appreciated securities, a percentage of an estate, valuable personal property, or a retirement account. Any gift of any amount positively impacts the future of Theta Chi.



**Brother Howard Alter**  
(Omega/Penn State 1941)

**Sherwood Blue and his wife, Janet, circa 1960s.**

## FRANCISCO FLORES (Iota /Colgate 2017)

“The Sasser Presidents conference taught me the ins and outs of being a successful leader among my peers. It taught me how to be the leader that my brothers are expecting me to be by following the bylaws and the traditions of Theta Chi Fraternity. It truly had a large impact on the way I approach situations; respectfully, while maintaining my role as the Chapter President. This conference would not have been possible without the generosity of the donors who gave to the Cornerstone Campaign.”





The simplest way to make your planned gift to Theta Chi is to list our legal name and tax-ID number, seen below, as a beneficiary.

## The Foundation Chapter of Theta Chi 21-4014559

Brothers,

The Foundation Chapter impacts the lives of our collegiate men every day. I received a scholarship from The Foundation Chapter during my undergraduate and graduate career, thanks to generous alumni like you. I've made it my life goal to pay it forward by giving back the amount of support I received, and then some, to ensure future brothers receive as much, if not more, support than I did.

I made the choice to support The Foundation Chapter in multiple ways. I make an annual gift of \$1,200 to support the Excellence Fund and fulfill my Cornerstone pledge. I also made a planned gift to Theta Chi, listing The Foundation Chapter as the primary beneficiary of my retirement account. It is my desire to have the maximum impact possible on the future of our Fraternity. If you have yet to begin your relationship with The Foundation Chapter, please use the giving envelope in this issue of *The Rattle* or visit [www.thetachi.org/give](http://www.thetachi.org/give) to make your tax-deductible gift.

Thank you for taking the time to learn more about the mission and goals of The Foundation Chapter. Your tax-deductible gift has a profound impact on the lives of our collegiate brothers. Please read some of the testimonials from our members sharing their stories and their thanks to our donors.

If you have any questions about The Foundation Chapter, about making a gift, or if you would like to establish a giving plan, please contact me at 317-848-1856 or email me at [philip@thetachi.org](mailto:philip@thetachi.org).

Thank You and Fraternally,



Philip Thornton  
Chief Development Officer

Chief Development Officer Philip Thornton explains how to effectively manage Associate Development Officers during a Foundation lunch hosted at the International Headquarters.



### LOGAN MARTINEZ (Eta Tau/CSU-Stanislaus 2017)

"Attending the Sasser Presidents Conference was a life changing experience. Seeing 153 newly elected Presidents join together in one room to learn how to lead our chapters is powerful! The leadership of the brothers sitting around me collectively manage 8,000+ collegiate brothers. When our Executive Director, Mike Mayer, referred to us as the CEO of our chapter and overseer of its operations, this gave me a great understanding of the importance of my role as Chapter President. This conference empowers the presidents and serves as the ultimate networking tool to collaborate with one another. To the donors of the Cornerstone Campaign and Brother Sasser: I cannot express enough my gratitude for your contribution to our Fraternity. This conference is one I will never forget. I hope to one day do something as great as you have done to promote the leadership of our brotherhood. Because of you, I continue to love this Fraternity more and more, day by day, experience by experience."



**The selfless act of a brother** is the theme for many pages of *The Rattle*. Through these stories, the Helping Hand manifests itself in the hearts of our brothers and in the lives of those impacted. Take Jay Madison (Eta Psi/UAB 2017) for instance. He participated in a bone marrow donor registration last year, thinking “what’s the harm in signing up?” Madison became one of the 0.002% of registrants who are selected to actually donate and helped save the life of a leukemia patient—yet he isn’t the only one. Cody Lopez (Epsilon Kappa/Idaho 2014), made a lifesaving bone marrow donation to a child with leukemia. David F. Bridges (Gamma/Maine 2014), too. Or take the Eta Delta/Babson alumni hosting a bone marrow registry in 2014. Dale Hetland (Phi/North Dakota State 1992) donated a kidney in 2012 to a fellow chapter brother, Jon Kragness (Phi/North Dakota State 1992), who was suffering from kidney failure. Jim Alfieri (Epsilon/WPI 1959) is another story of dedication—running marathons to raise money for the Leukemia & Lymphoma Society (LLS) until his own diagnosis in 2011. Remember the 4,000 miles that were traveled by Nick Sehy (Delta Mu/Texas 2017) for cancer awareness? Or the \$17,000 Alpha Phi/Alabama raised for suicide awareness in the fall of 2015? Chapters across the country continuously host blood drives, sometimes multiple times a semester. Did you know that donating blood just once can save up to three lives? These examples only skim the surface of brothers perpetuating a culture of the Helping Hand, and David Parsons (Chi/Auburn 1990) is yet another example.

# A Kidney Named Gronk

BY KRIS TAIBL, EDITOR

**I**t all started with a Facebook post. David Parson's (Chi/Auburn 1990) wife, Debbie, was Facebook friends with many of the other moms and wives in the neighborhood. While scrolling through the social media application's news feed, she came across a page shared by their neighbor Mary Ellen Graessle, entitled, “A Kidney for Kevin.” The page was created for Kevin Graessle, a retired Marine who was in desperate need of a kidney donor.

For more than 30 years, Kevin had been suffering from kidney disease. Its slow progression never hindered his ability to live a full life; the only restriction revolving around his potassium intake. The beginning of his 27 years as a Marine is when Kevin was first diagnosed. “I was in flying status for helicopters and during a routine flight physical, they noticed some abnormalities,” explained Kevin. “This led to some additional testing and ultimately my diagnosis at 23 years old.” Over the course of this last year, however, the disease took a turn for the worse. “My kidney function just tanked from that point.”

There’s no outward signs of kidney disease. Its presence is revealed through bloodwork and urinalysis testing. For Kevin, he felt totally normal at the time of his diagnosis. “It was just life as usual and doctors continued to monitor everything,” he explained. Over the years, Kevin had to take high blood pressure medication, high cholesterol medication, and a few other prescriptions to support the kidney’s filtration system. Up until this fall’s downward turn, everything was normal as far as Kevin was concerned.

The Graessles didn’t initially know David Parsons very well. They lived down the street from one another in Marietta, GA,

but were only familiar through typical neighborhood functions. When Debbie Parsons came across the Facebook page last fall, she showed it to David. “The family posted a status that Kevin had been suffering from kidney disease for almost 30 years,” David explained. “And they were now at a point where he needed a transplant.” Unfortunately, none of the Graessles were a match, and needed an O+ or O- blood type. When David (an O- blood type) saw the post, he, without hesitation, told his wife, “yeah, I’d be willing to do it.” Although Brother Parsons had little knowledge on kidney donation, he knew they were born with two, and only need one to live. For him, it wasn’t even a question.

David immediately received the contact information for the kidney donation program at Piedmont Hospital. He learned what’s involved, what the procedure would entail, and the long-term ramifications (a surprisingly short list). One of the very first tests included a thorough blood pressure documentation being taken twice a day for four days. The next was a blood draw with both David and Kevin. A compatibility test known as cross-matching was done to ensure that David’s blood type, and ultimately his organ, would be accepted by Kevin’s body. The two carpooled to the hospital on a Monday to get this test done. Naturally, Sunday night’s football games came up in conversation. This revealed that Kevin was a New York Giants fan, whereas, David was a die-hard New England Patriots fan. Memories of Super Bowls XLII and XLVI were certainly beginning to surface.

About two weeks later, the hospital called David. He had been confirmed as a match. Kevin was traveling home from a



David Parsons (right) holds a stuffed kidney next to die-hard Giants fan, Kevin Graessle. Why would a Giants fan be wearing a Rob Gronkowski jersey? The kidney David donated to Kevin was nicknamed after “Gronk,” David’s favorite player.



“More than one hundred thousand people are waiting for a kidney any given day. People might be afraid to donate for whatever reason, but it comes down to a need for more awareness.” —Kevin Graessle

business trip at the time, so David and his wife got a card and some balloons to leave at the Graessle house. “Now you’ll have Patriots blood running through you!” read David’s note to Kevin. Several weeks later, Kevin’s wife, Mary Ellen, and Mrs. Parsons, decided that they were going to name the kidney ‘Gronk’ after David’s favorite football player; the #87 tight end for the New England Patriots, Rob Gronkowski. As a Giants fan, this might have been tough for Kevin, but he graciously accepted the kidney nonetheless, declaring, “who am I to say what we name the kidney!” For both Kevin and David, as well as their families, it kept the situation light and was a way for everyone to have fun with what was happening.



Kevin and David check in to the hospital.



The phone call confirmation was still not the final piece. A number of additional urine and blood tests would be done, on top of several extensive physicals and even a psychiatric review. Ultimately, the results from these would be presented to a physician panel, who would deem David a suitable match. To get an idea of how long the process takes, David's initial blood tests were done in November 2015, and the surgery itself didn't occur until February 5, 2016. "What's interesting about the three months leading up to the surgery is that because of medical privacy laws, Kevin and his family were left somewhat in the dark," explained David. "Part of the reason for this is that there had been individuals who, after all of the physicals and many of the tests, learned more about the procedure and backed out—but backing out wasn't something I was going to do."

About a week before the surgery, the Graessles had the Parsons family over for dinner. As one would expect, they had become close thanks to 'Gronk' the kidney. This dinner was also when David noticed Kevin's son, Max (Iota Xi/George College 2015), was wearing a Theta Chi shirt. "I saw him walking away after dinner, and noticed the back of his shirt said Theta Chi." Max had no idea he and David shared the same letters until we began doing this very article. "Once I drew the connection, it all

**Two weeks post surgery. Six weeks after donating his kidney, Brother Dave Parsons (right) ran a half marathon.**

made sense. We are all taught to extend the Helping Hand, and David did just that," Max reflected. When asked about his experience, Brother Parsons still reminisces fondly of his time as an undergraduate. "Without a doubt, Theta Chi was one of the best experiences of my life," Parsons said. "When I look back at my time at Auburn, I can't imagine going through college without Theta Chi. It was a great, diverse group of men who kept me smiling and laughing for four years straight." This positive outlook seems to have stuck with him even through the transplant process.

The three-hour procedure kept David in the hospital for less than 36 hours, while Kevin stayed several days longer, guaranteeing his body accepted the kidney. After the procedure, both received matching Gronkowski jerseys, commemorating the kidney named Gronk.

Parsons took off of work the following week for recovery. He wasn't able to lift more than 10 pounds, jog, or workout for six weeks. "The surgeon said at the six week mark you're as healed as you're going to be, so by that point there's no restrictions on what you can do." As an avid runner, boasting over 10 marathons, six weeks off is no easy task. When asked, jokingly, if he was going to go run a marathon at the end of the six weeks, David responded "I actually ran a half marathon on Sunday." When the six-week mark was hit on March 18, David ran four miles that morning, four more the next morning, and a half marathon on March 20. As far as getting back into running David shared, "I'm feeling it now, no question. But I got through it." The long term lifestyle changes for David? No ibuprofen. "When we talk about long term, that's really it. My one kidney is going to grow larger than normal over the next six or seven months. By the time this happens, it will be functioning at around 75%–85% which is more than enough to live a normal lifestyle," explained David. Kevin's recovery was even more positive.

"Once I got out of the surgery, I didn't feel any pain!" Kevin said. "It went so fast—I mean I was in the hospital for five days,



Kidney disease is the 9th leading cause of death in the United States, claiming more lives than breast cancer or prostate cancer, annually. Currently, 661,000 Americans are suffering from kidney failure, with 468,000 of them being on dialysis.



**Coincidentally, while at dinner with Kevin's family, Brother Parson's noticed that Kevin's son, Max, is a Theta Chi brother.**

but once I got out, I was up and about."By the end of the third week, Kevin had returned to work."Recovery is different for everybody, but for me it was phenomenal. If anything, I was going stir-crazy being stuck at the house."When asked about the impact it had left on him and his family, Kevin explained that he has "a whole new lease on life."He described seeing his son and daughter starting their own families, eventually, and being thankful to know that he'll be around for that."I have no restrictions now, it's fantastic."No restrictions outside of contact sports. With the addition of 'Gronk', Kevin's old kidneys remain in his body, in their original positions, with the new one being placed near the pelvis towards the front. As a result, it doesn't receive the same natural protections as the other two.

A number of news stations picked up the story, including several in Atlanta. The Patriots even published an article on their website that Gronkowski, himself, shared through Facebook. Kevin and David want to use the attention to raise awareness about organ donation."There's not much knowledge out there on it,"explained

**"Once I drew the connection, it all made sense. We are all taught to extend the Helping Hand, and David did just that."**

— Max Graessle (Iota Xi/George College 2015)

Kevin."More than one hundred thousand people are waiting for a kidney on any given day. And there's a lack of information. People might be afraid to donate for whatever reason, but it comes down to a need for more awareness."Kidney disease is the 9th leading cause of death in the United States, claiming more lives than breast cancer or prostate cancer, annually. Currently, 661,000 Americans are suffering from kidney failure, with 468,000 of them being on dialysis. The National Kidney Foundation is the largest resource in the nation for kidney disease and gives support to the patients and families impacted. To learn more on kidney disease, visit their website at [www.kidney.org](http://www.kidney.org).

### **LIVING THE LIFE OF A RESOLUTE MAN**

This story seems particularly appropriate among the same pages as The Resolute Man. With a guidebook available to download from our website, and pages in this issue describing the steps to achieve our new distinction, one may be consumed with worries of filling a checkbox, or fulfilling a requirement. Let us remind you that the character of our brothers is the ultimate goal. Understand the Helping Hand doesn't have to surface only as a means of recognition, but can truly transcend into every day we live, into every breath we take. Let it become our nature then, as Theta Chis, to exhibit the same selflessness and sacrifice that Brother Parsons has shown. Take being a Resolute Man not only as the journey prescribed in the guide, but as a mantra for each day. What will you do to help your fellow man? To perpetuate Theta Chi's ideals? To live the life of a Resolute Man? ■



GAMMA/MAINE

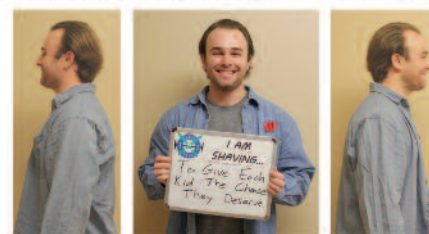


THETA/MASSACHUSETTS



PSI/ WISCONSIN

## THETA CHI FRATERNITY PRESENTS



## SKI FOR CANCER WEEK 2016

Benefiting pediatric cancer research

Psi Chapter brothers sent out more than 800 letters to students, businesses, and alumni to raise funds for pediatric cancer research.

RIGHT: Brother Raveret's "before shaving" picture.



ALPHA GAMMA/MICHIGAN

Nearly 500 students packed the house at Alpha Gamma's mental awareness event, where brothers raised more than \$35,000 for the George Orley Mental Awareness Initiative.

### GAMMA/MAINE

The brothers recently adopted a trail in the Hirundo Wildlife Refuge and have been devoting service hours to its care and maintenance. The chapter has also tackled several new housing projects, including a basement renovation and an interior paint job, featuring Theta Chi inspired artwork.

### CHI/AUBURN

This past year, Chi brothers raised more than \$15,000 for the Choroideremia Research Foundation.

Choroideremia is a rare genetic retinal eye disease that can lead to blindness. Chapter President **Will Looney** (2017) has family members who are afflicted with the disease, which sparked the chapter to take action. Several philanthropic events were held to raise money, including a silent auction on Parents Weekend and a Dinner in the Dark. The chapter also sold shirts and wristbands. Chi Chapter also won the Auburn IFC Most Outstanding Large Fraternity Award. The last time Chi Chapter received this prestigious award was 15 years ago. Pictured on page 35. L-R: incoming President **William Looney**, outgoing President **Thomas Miller** (2015), and outgoing IFC President **Eddie Seay** (2015).

### THETA/MASSACHUSETTS

Theta Chapter was host to a very successful Mid-Year Leadership Conference in February, with more than 150 brothers in attendance. The chapter also hosted the Amherst Police Department, Amherst Fire Department, a local law firm, members of Greek life, and the entire UMass community at the chapter house for a barbecue. The event sparked conversations on health and safety before the notori-

ous "Blarney Blowout" weekend. Hundreds of UMass students were in attendance, engaging with law enforcement and fire officials. The event turned out to be a great success, unique to anything hosted on campus before. On Founders Day weekend, the chapter hosted another large scale barbecue, bringing nearly 100 years of Theta Chapter alumni back to the chapter house. Brothers also took home a number of IFC awards, including Fraternity of the Year, Fraternity Man of the Year—**Luke Glatthorn** (2016); Fraternity Chapter President of the Year—**Brandon Moseley** (2016); Outstanding Fraternity Man of the Year, Junior—**John Friesen** (2017); and Sophomore—**Nicholas Rampone** (2018).

### ALPHA GAMMA/MICHIGAN

Brothers teamed up with Alpha Gamma Delta and Delta Gamma to host a 5K in support of the Josh E. Levine Foundation, which educates about the dangerous combination of stimulants and alcohol. Josh Levine (2014) was heavily involved with the Wolverine football program as a field manager. He had a passion for sports, with aspirations of coaching. Josh passed away in the summer of 2014 from co-ingesting

stimulants and alcohol. Levine's mother spoke at the event and educated the participants through Josh's story. For more information about the foundation, visit [www.joshelevinefoundation.org/](http://www.joshelevinefoundation.org/). The chapter also co-hosted an event to remember the life of Brother **George Orley** (2012). George tragically took his own life several years ago after struggling with depression. During the event, Professor Stephen Strobbe, a member of the Psychiatry Department at the University of Michigan, spoke, as well as comedian Sam Silverstein. Professor Strobbe emphasized the importance of asking for help when you need it and reminded us to never be afraid of mental illnesses. More than \$35,000 was raised for the George Orley Mental Wellness Initiative.

### ALPHA DELTA/PURDUE

The chapter raised \$10,000 during Purdue's Dance Marathon, benefiting Riley Hospital for Children. They were the highest achieving fraternity in the marathon, bringing home the PUDM Greek Cup. Brothers also teamed up with Delta Sigma Pi and Purdue Gymnastics to volunteer at Food Finders Food Bank.



## Psi/Wisconsin raises \$107,739 for cancer research!

BY: CALLEN RAVERET (2016) SKI FOR CANCER WEEK CHAIRMAN

Psi Chapter held their 47th Annual Ski for Cancer philanthropy event at Cascade Mountain in Portage, WI on March 5. Ski for Cancer has been the premier philanthropy event run by Psi Chapter since 1969, raising more than \$500,000 for the St. Baldrick's Foundation and Midwest Athletes Against Childhood Cancer Fund (MACC Fund). This year, however, was the first Ski for Cancer Week. Ski for Cancer Week 2016 is now the largest student-run philanthropy event in the state of Wisconsin, offering a fun week of activities, ending with a full day of skiing and snowboarding at the annual Ski for Cancer event.

Our goal this year was to raise \$100,000 for St. Baldrick's and the MACC Fund to support pediatric cancer research. Through our efforts, we were able to raise more than double what we did last year, as well as beat our goal. In total, \$107,739.29 was raised!

We feel fortunate to make an impact on the fight against pediatric cancer. Having the opportunity to change one child's life makes all of our efforts worth it. Being a member of Theta Chi calls for us to be something greater than ourselves. Moments like these make you realize how powerful Theta Chi is.

Planning for the event started in June 2015. Ski for Cancer Week 2016 became a reality, thanks to the dedicated committee of 20 brothers who met each week for 6 months straight. Our goal was to not just get students involved, but the entire UW Madison community. By walking into 200 local companies, networking with more than 1,000 student leaders on campus, and engaging our alumni base with updates, Ski for Cancer Week became a philanthropy of the community.

Feel free to reach out to Psi Chapter at [skiforcancer2016@gmail.com](mailto:skiforcancer2016@gmail.com) with any questions. We would be more than happy to offer advice!



### ALPHA IOTA/INDIANA

The chapter hosted an event with Indiana University's School of Public Health, highlighting suicide prevention and awareness. Academic Adviser Cindy Moore spoke on her experiences, having lost a student and nephew. As a certified trainer for safeTALK, she also educated the chapter on how to be aware of those who need help. **Jalen Watkins** (2017) became a member of the board of managers for the Indiana University Alumni Association (IUAA) thanks to his student government involvement. The board provides general supervision, fiduciary oversight, and strategic planning for IUAA.

### ALPHA MU/IOWA STATE

On February 29, the men of Alpha Mu co-hosted a candlelight vigil to honor survivors of sexual assault and domestic violence with Pi Beta Phi Sorority. Two speakers opened the vigil, helping to educate the attendees on issues surrounding sexual assault.

### ALPHA PI/MINNESOTA

In early October, eight chapter brothers ran the Twin Cities Marathon, many of them first-time marathoners. The Alpha Pi

Chapter marathon crew used the race to help a charitable cause, raising \$1,386 for Team World Vision, the largest non-government provider of clean water in the developing world. Brothers also participated in the Naval ROTC 5K to raise money for the NROTC on campus. The donations that the Naval ROTC received from participants was used to pay for professional training on military bases, national competitions against other ROTC units, and new equipment. Due to having the largest number of participants, the chapter received a \$300 award that was later donated to the USO.

### ALPHA PHI/ALABAMA

Alpha Phi Chapter raised nearly \$17,000 for suicide prevention this fall through the Out of the Darkness walk. Theta Chi partnered with Phi Mu Sorority and the University of Alabama Counseling Center to put on the event. The 1,400 participants raised \$58,000, with Theta Chi raising the most money for the second year in a row. A clothing drive was also held, and the largest clothing donation received \$200 towards a philanthropy of their choice.

### ALPHA PSI/MARYLAND

The chapter hosted a clothing drive to support local veterans. Brothers collected clothes from 14 sorority and fraternity houses through the month of November that were donated to the Military Order of the Purple Heart, a veteran's charity operated by Purple Heart recipients.

### BETA ETA/WASHINGTON COLLEGE

Beta Eta Chapter won the Loving Cup last semester in recognition for maintaining the highest fraternity GPA on campus. **Bryan Riley** (2017) explains that "brothers are expected to get involved with the Fraternity, but that involvement shouldn't hinder someone's academic ability or other involvement on campus."

### BETA OMICRON/CINCINNATI

Brother, **Ian Owens** (2016), (pictured in the grey suit on page 34) has been tapped into Phi Rho Chi, a Greek men's honor society at the University of Cincinnati, which recognizes members for their accomplishments in leadership and recruitment.



*First-time marathon participant and Alpha Pi brother, Mitch Andreassen (2018), ran an average of eight miles a day in the spring to train.*

### BETA RHO/ILLINOIS WESLEYAN

The chapter hosted their annual Polar Plunge at Miller Park Lake on February 27. The statewide event benefits the 43,000 athletes of the Special Olympics.



BETA OMICRON/CINCINNATI



ZETA PI/OLD DOMINION



IOTA LAMBDA/LONGWOOD



THETA ETA/SAM HOUSTON STATE



**Anthony Lee** (Delta Mu/Texas 2017) has been serving as a Leadership and Ethics Institute (LEI) Peer Educator through the Office of the Dean of Students at the University of Texas. The LEI team has assisted more than 1,000 students in leadership development with the university's values serving as the framework.

## GAMMA RHO/FLORIDA STATE

With help from Kappa Kappa Gamma teammates, Gamma Rho brothers won the award for highest total fundraising during Florida State's Dance Marathon. The two organizations raised a combined \$95,043, contributing to Florida State's record breaking \$1,435,120. The money raised goes directly to local Children's Miracle Network hospitals.

## GAMMA UPSILON/ BRADLEY

Brothers teamed up with the Lewis J. Burger Center for Student Leadership and Public Service, ROTC, Veterans Support Services, and the Salvation Army, to hold a Veterans Supply Drive through the month of March.

## DELTA MU/TEXAS

Delta Mu Chapter was host to a successful MYLC in early 2016.

## DELTA PI/INDIANA STATE

Delta Pi Chapter co-hosted a Valentine's Day dance at Harrison's Crossing Retirement Home, with the women of Sigma Kappa. Members of both organizations volunteered as dates for the residents and even crowned a king and queen at the end of the night!

## EPSILON TAU/STEPHEN F. AUSTIN

Brothers at Epsilon Tau hosted a fundraiser and donated all of the proceeds to Driving Jacks, a non-profit safe ride program operated by students at Stephen F. Austin State University. The group's facility had recently flooded from a pipe burst, and the chapter helped Driving Jacks raise \$2,200 for the repairs.

## ZETA PI/OLD DOMINION

Zeta Pi hosted their annual Sorority Best Dance Crew (SBDC) philanthropy event in November. The broad scope of the competition has impacted a diverse collection of causes, making it unique to the Old Dominion community. About 700 people attended the event, raising \$1,000 for various causes. With the event coinciding with Thanksgiving, brothers also collected 300 pounds of non-perishable food items for the Foodbank of Southeastern Virginia & Eastern Shore. In April, the chapter hosted its first-ever G.I. Theta Chi. The week-long event included a field day, cookout, and 5K, with participation open to the entire campus community. All proceeds were donated to the USO.

## ETA PI/EAST STROUDSBURG

This past fall, Eta Pi brothers helped raise \$8,225 for the Salvation Army to buy turkeys for the less fortunate families of Monroe County. In April, they held an event on campus to raise money for the USO. The event included a silent auction, an Army ROTC obstacle course, live music, and blood donation sign-ups.

## THETA ETA/SAM HOUSTON STATE

Theta Chi brothers teamed up with the Talented Tenth group, Kappa Alpha Order, and Omega Delta Phi for a Dreams Day March on Martin Luther King, Jr. Day. It was the third year for the event, which brings together students from all different backgrounds to march in unity and honor the legacy of Dr. King.

## IOTA ETA/PACIFIC

The chapter hosted their 4th Annual G.I. Theta Chi in March. The week included merchandise sales, a barbecue, and a trivia night, including a USO speaker. All proceeds were donated to the USO.

## IOTA LAMBDA/LONGWOOD

Iota Lambda received the Social Justice Award at the 2015 Clubs and Organization Award Reception. The recognition comes after the chapter worked to promote mental health and suicide awareness/prevention. Pictured: Brothers (L-R) **Connor Wheeler** (2017), **Evan Barnes** (2018), **Malik Long** (2018), and **Stephen Barham** (2016) pose with the Social Justice Award. **Cameron Patterson** (2010) was also recognized with the Outstanding Chapter Adviser Award.



IOTA LAMBDA/LONGWOOD



EPSILON ZETA/TAMPA



#### IOTA SIGMA/TOWSON

More than \$19,000 was raised by the chapter for the USO through G.I. Theta Chi this fall, surpassing their \$15,000 goal. The brothers have remained heavily involved on campus and throughout the community, boasting 10 brothers who serve as Orientation Leaders. The chapter also devoted more than 1,000 community service hours, collaborating with organizations such as Parks and People in Baltimore and the American Red Cross.



ZETA RHO/KENTUCKY

#### IOTA TAU/NORTHERN KENTUCKY

The chapter was awarded the NKU Office of Fraternity and Sorority Life Service Award in January. They also captured the Greek Week Championship for the second time in three years by a 60-point margin. Their first Futsal Fives Soccer Tournament was held in the fall and raised \$1,400 for the USO. **Troy Cornes** (2018) placed 3rd in the 2016 Talent Show at NKU after singing an acoustic mashup. In February, the chapter won Northern Kentucky's Homecoming, with **Patrick Reagan** (2016) being crowned Homecoming King. Lastly, 23 men were initiated in the fall, with nine more in spring—the most of any fraternity on campus.

#### IOTA PSI/RIT

Iota Psi brothers assisted Habitat for Humanity with building a home in Batavia, NY. The day consisted of insulating the entire home from bottom to top, including the walls and the ceilings on the first and second floor. Brothers moved an entire 18-wheeler worth of dry wall into the first and second floors (which was installed during the following week). It was the first time the chapter ever participated in a Habitat for Humanity build, and they already plan to help build another home with the organization in 2016. These homes directly impact local families, which is something that resonates with the chapter. ■



IOTA PSI/RIT





**ETA/Rhode Island** Brothers from the 1973–1978 era gathered at **Charlie Angeloro's** (1973) home in South County, RI for a reunion. “None of us could remember getting together as a total group before,” said Jim Carlson (1973). “Smaller groups have been getting together regularly, but nothing this large.” Brothers traveled from Colorado, Florida, New Hampshire, and New Jersey to attend. The men hope to grow these events and host them more frequently.



The **ZETA RHO/Kentucky** Chapter is proud to report a successful alumni weekend lunch hosted at their new chapter house. For many alumni, this was the first time they attended a Theta Chi event in numerous years. Connections between brothers, old and new, were made, paving the future for stronger alumni involvement at the University of Kentucky.



## Theta Chi Fraternity is happy to announce the upcoming recolonizations!



**Alpha Lambda/Ohio State**  
Fall 2016



**Gamma Mu/Bowling Green**  
Fall 2017



**Alpha Beta/Pittsburgh**  
Fall 2020

For more information, or to volunteer help, contact the International Headquarters at [ihq@thetachi.org](mailto:ihq@thetachi.org) or 317-848-1856.



In early spring, a number of **EPSILON DELTA/Youngstown State** alumni met with their spouses for a long weekend in Sarasota, FL, an event the group refers to as Theta Chi “Winterfest.”

### OMEGA/Penn State

**Lieam Fenneksen** (2014) made his theatrical debut in early 2016, playing the role of Svec in the Irish-inspired Broadway musical, *Once*. The role required Fenneksen to not only act, sing, and dance, but play four different instruments throughout the performance. “I’ve been playing guitar and drums since I was 12 or 13,” explains Fenneksen. “But I’ve never played the mandolin or the banjo. It’s just another threaded instrument like guitar, so it’s basically memorizing a new set of chords.” For more information on the play, visit <http://oncemusical.ie/>

### ALPHA BETA/Pittsburgh

After more than 30 years at Wisconsin Physician Service in Madison, WI, **Kevin Santulis** (1976) is retiring as Vice President in the Military and Veterans Health Division. For most of his career he ran the claim and customer service operations, serving military families stateside and internationally.

### ALPHA OMICRON/ Washington State

**Brian Benzel** (1970) and his colleague, Kenneth E. Hoover, had their first book published, reflecting on their careers as superintendents and CFOs in education.

Entitled *The Superintendent and the CFO*, the book focuses on the importance of the relationship between the two roles and building an effective team. This is key to building sustainable educational programs for all students. The book can be found at [Rowman.com](http://Rowman.com).

### BETA ALPHA/UCLA

Former Grand Chapter officer, **Bill Palmer** (1985), was interviewed by the *Los Angeles Times* on two petitions he has pending with the U.S. Supreme Court. For 15 years, Brother Palmer has been attempting to create changes in California’s Unclaimed Property Law.

### BETA NU/Case Western

**Dan Myers** (2008) was named a 2016 Rising Star in Consumer Law by SuperLawyers, receiving the same distinction in 2014.

**Craig A. Marvinney** (1979) was appointed to the board of directors of the Federation of Defense & Corporate Counsel (FDCC), an international organization of counsel focusing on defense of corporations and insurance companies. Brother Marvinney also accepted the 2015 “FDCC Connect” Award for best exemplifying the spirit of the FDCC business referral network. Named an Ohio “Super-lawyer” for several years now, he





Founding brothers speak.



focuses on drug and medical device litigation and in cybersecurity law. Marvinney will also be concluding his term on the board of directors of the Case Western Reserve University Alumni Association.

#### **BETA PI/Monmouth**

After 30 seasons with the Hope College football program, Dean Kreps (1984) has stepped down as the head coach. This departure comes after 21 seasons which include and six championships as head coach. Brother Kreps will remain a professor of kinesiology through the end of the 2015/2016 academic term.



In October, ZETA PI/Old Dominion hosted their 10th Annual Helping Hand Golf Tournament to raise money for the undergraduate scholarship fund. More than 100 brothers and alumni attended, making it immensely successful.

#### **GAMMA TAU/Drake**

Brother Rob Marshall (1988) pledged Theta Chi in 1984 and served as Chapter President his senior year. His father was a very talented artist and had been dabbling in stained glass at the time. During the spring of his junior year, his parents came to visit Rob at Drake Relays and surprised him with a Coat of Arms stained-glass window. His parents never missed a homecoming, dads weekend, moms weekend, or Drake Relays in the four years that he was an undergraduate. On many occasions, they were able to witness the brotherhood of Theta Chi and the deep friendships Rob had developed. The stained-glass Coat of Arms was hung in front of Rob's bedroom window while he lived in the fraternity house, and after graduation, he took it with him. Rob's father passed away in 2013 from pancreatic cancer, just before the tear down and rebuild of the Gamma Tau Chapter house. Brother Marshall supported the rebuild of the chapter house from the beginning and knew that this stained glass would be a perfect addition to the new house. "I knew that it would also be a great way to honor my Dad and all that he did for me," Rob said.

The Coat of Arms is now framed and back-lit, and today it is Rob's gift to the chapter house. It adorns the living room wall above the fireplace and will be enjoyed by future generations of brothers.



#### **BETA RHO/Illinois Wesleyan**

Tony-nominated actor **Frankie Faison** (1971) was recently featured in Stay Regular. The show hosts artists from across the spectrum to discuss their careers over coffee in New York City. In the episode, Faison speaks extensively on his experience as an actor, his creative process, and his love for theater. Episodes can be watched via YouTube by searching for the SightSense Productions station.

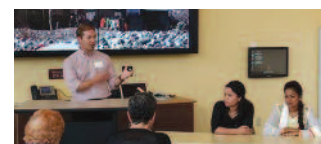
#### **BETA SIGMA/Lehigh**

**Craig Goldberg** (2004) spearheaded an initiative to fundraise \$3,600 to provide his elementary

classroom with Chromebooks to foster a more effective and modern education. "The possibilities really are limitless," describes Goldberg on his fundraising website. "Not only will Chromebooks help limit the use of paper in an effort to go green, but there are so many tools that we can use as a class to drive our learning." In March, the classroom hit its fundraising goal and will soon be utilizing the Chromebooks in their daily education.

#### **GAMMA LAMBDA/Denver**

Brother **Grant Knisely** (2002) recently produced a documentary entitled, *Untouchable: Children of God*.



The film highlights the international sex trafficking trade. In light of his film, Brother Knisely returned to his alma mater to speak on the subject. "It was a great event and Grant is doing good work in the United States and around the world on this topic," said chapter brother, **Jon Kraus** (2000). For more information on Grant, his nonprofit, and his films, go to [coderedfilms.com/untouchable/](http://coderedfilms.com/untouchable/).





**ETA CHI/George Mason**  
Deputy **Glenn "Patrick" Keough** (2012) was honored for his outstanding work in DUI enforcement by the Washington Regional Alcohol Program (WRAP). WRAP, is a public-private partnership working to prevent drunk driving and underage drinking in the Washington-metropolitan area.



After presenting the keynote during the Washington, D.C. Mid-Year Leadership Summit, **Col. Ed Shames** (2014) was presented Theta Chi's Citation of Honor, an award recognizing a member's outstanding service to the Fraternity. Col. Shames is pictured with International President Dick Elder and past Foundation Board President Carlton Bennett shortly after accepting the award.



**IOTA BETA/Missouri State**  
**Steven Rosner** (2013) (left) earned his flight suit and began primary flight school for the United States Marine Corps in February. **Spencer Ernst** (2014) recently earned his Naval Aviator Wings and plans to fly helicopters.

## DELTA OMEGA/Ripon

**David Mirisch** (1959) has been appointed as the new executive director of the Moorpark College Foundation. Brother Mirisch has assisted in countless fundraising

events across the world, raising over \$35,000,000 in total. He also is a member of the Mirisch family that boasts the production of more than 72 motion pictures, 24 of which earned Academy Awards.

## EPSILON PHI/ Central Missouri

In December 2015, **Doug Shaeffler** (1986) was appointed as assistant chief of police with the Richmond Heights Police Department in Missouri. Brother Shaeffler graduated from the FBI National Academy in 2014 and also serves as an adjunct professor at St. Louis University in the Criminal Justice Department.

**Kevin C. Riley** (1984) was recently promoted to chief operation officer of Digi International, a leading global provider of mission-critical machine-to-machine connectivity products and services. Previously, Brother Riley served as the senior vice president and general global manager of several global business units.

## ZETA SIGMA/Wisconsin- River Falls

2003 Floyd Field Award Recipient **Mike Martin** (1999) was recently recognized for outstanding service by his alma mater, receiving the Chancellor's Award for Excellence. Brother Martin serves as Academic Adviser and administration specialist for the University.

## ETA GAMMA/Morehead St.

The street that the Eta Gamma Chapter house resides on was recently changed to the name of a longtime and late Chapter Adviser, **John Alcorn** (1978).



## IOTA THETA/Central Florida

**Matt Pollitt** (2008) received his first design patent on a product known as a proximity marker used in "closest to the pin" golf competitions. Thousands of these products have been sold to country clubs and PGA Tour events around the globe. Brother Pollitt has owned and operated PTE Golf, a central Florida-based golf company, for more than 12 years.

## IOTA SIGMA/Towson

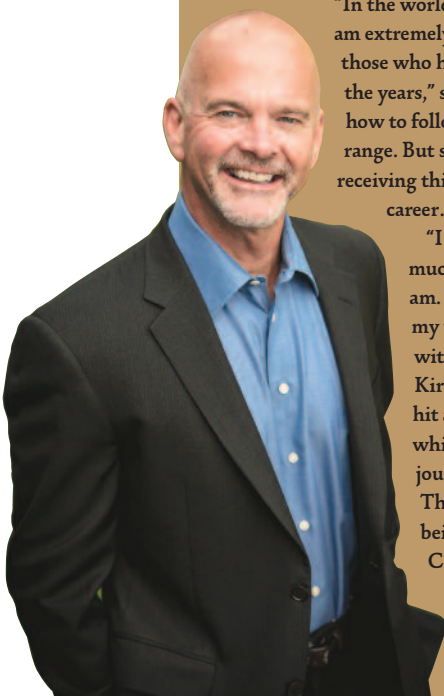
**Jack Dana** (2015) is currently in his first year as a camera man for the Baltimore Ravens. Brother Dana shoots and streams all of the press conferences, edits various videos, and works on many of the Ravens' fan shows.

**ZETA GAMMA/Alberta** Brother **Garth Kirkham** (1981), who serves as the principal at Kirkham Geosystems Ltd. of Burnaby, British Columbia, was recently presented with the C. J. Westerman Memorial Award by the Association of Engineers and Geoscientists of British Columbia (AEGBC).

"In the world of geoscientists, this is the Oscar, so I am extremely honored to receive this and must thank those who have supported and believed in me over the years," says Kirkham. "I am now at a loss as to how to follow this up... a Nobel Prize appears in range. But seriously, I have always known that receiving this award would be the pinnacle of my career... and it is."

"I truly credit being a Theta Chi with much of the success that I have and who I am. A huge part of this award is based on my volunteer work, both professionally and within the community," explained Brother Kirkham. "Extending 'The Helping Hand' hit a chord with me then [as an collegian], which has followed me throughout my life's journey. Another thing that bit me as a Theta Chi at the University of Alberta was being trusted and encouraged to lead.

Consequently, I have never been afraid to throw my hat into the ring, take the reins, and give my best."







We are honored to call these men our brothers. The condolences of Theta Chi's extended worldwide family are offered to the families and friends of these deceased brothers. This listing includes all deaths reported to the International Headquarters between September 16, 2015–April 5, 2016. To report news of a brother who has passed on to the Chapter Eternal, email [ihq@thetachi.org](mailto:ihq@thetachi.org).

**ALPHA***Norwich*

Jack J. Basil, Jr. (1946)  
Francis E. McIntire (1946)  
Ezekiel R. Peach, Jr. (1956)

**BETA***MIT*

Robert A. Hazan (1958)  
Judge E. McLaughlin (1946)

**GAMMA***Maine*

David R. Banach (1960)  
John E. Beaudry (1958)  
Donald B. Devoe (1941)  
David M. Silvernail (1991)

**DELTA***RPI*

W. Malcolm Gray, Jr. (1940)  
Harold W. Huntley, Jr. (1941)  
Peter G. Kirchner (1946)  
Vernell C. McClinton (1987)  
David M. Rickard (1945)  
Douglas E. Small (1955)

**ETA***Rhode Island*

Richard A. Gammell (1957)  
Edward C. Stebbins (1962)  
Joseph Troll (1954)

**THETA***Massachusetts*

Gerald A. Chrusciel (1955)  
Roland H. Gagnon (1952)  
Blanchard D. Warren, Jr. (1953)

**LAMBDA***Cornell*

Louis H. Barkhausen, II (1957)  
Glenn P. Crone (1953)  
Paul J. Gruber (1950)  
William I. Hamill (1970)  
Leon Peltz (1954)

**MU***California*

John B. Farr (1951)  
Lee M. Galloway (1946)  
Donald L. Hitzl (1962)  
Joseph S. Ramus (1962)

**XI***Virginia*

Samuel W. Sterrett (1950)

**OMICRON***Richmond*

William E. Browne (1952)  
Henry J. Decker, Jr. (1950) \*  
Benjamin C. Garrett, III (1960)  
William E. McKissick (1953)  
Morgan C. Pritchett (1956)  
Simeon P. Taylor, III (1947)  
James E. Tribble, Jr. (1962)

**RHO***University of Illinois*

James J. Grumley (1943)  
Charles F. Schmelzle (1950)

**SIGMA***Oregon State*

Denis R. Camp (1966)  
Terry L. Driskill (1975)  
Richard S. Nichols (1949)  
Ellsworth D. Purdy (1950)  
Ray O. Ruckert (1950)

**UPSILON***NYU*

George A. Blauvelt, Jr. (1963)  
John F. Doherty (1956)  
B. Holly Grimm (1942)  
Cornelius J. Sullivan (1957)

**PHI***North Dakota State*

Dale N. Brostrom (1950)  
Clarence A. Holloway (1972)  
Rome H. Mickelson (1955)

**CHI***Auburn*

Marvin R. Bishop (1970)  
Albert R. Brittain, Jr. (1964)  
Wallace R. McKinney, III (1956)

**PSI***Wisconsin*

E. Robert Campbell (1947)  
Earle L. Christ (1937)  
Richard W. Drexler (1957)  
William J. Haley (1957)  
Lawrence A. Hunholz (1948)  
William G. Lenling (1952)  
Robert J. Mathes (1953)  
Ralph F. Meinhardt (1951)  
Carl L. Meissner (1954)  
Wendell O. Woods (1938)  
Donald E. Yahr (1952)

**Richard A. Maugg (Alpha Rho/Washington 1953)**

Aug. 29, 1931–July 28, 2015

Richard A. Maugg (known as Dick) passed away from cancer in the summer of 2015. Famous for his role as Ed Jaymes in the massively popular Bartles & Jaymes wine cooler commercials, Dick played the skinny, silent counter-part of the duo. The two portrayed a folksy pair of men who became known across the country for their simple advertisements. Maugg was not an actor, however, and worked as a Santa Rosa contractor and developer prior to the role. His rise to fame began just ten days before shooting the first Bartles & Jaymes commercial. Maugg happened to be friends and chapter brothers with Hal Riney (1954), the ad agency director at the time (who also went on to produce Ronald Reagan's "Morning in America" campaign). As a result, staffers preparing the commercial arrived at Dick's house one day, asked him to put on a baseball cap, and say several lines. From 1984 to 1991, more than 100 Bartles & Jaymes commercials were aired, with Maugg in every single one, never saying a word. He is survived by his wife Barbara, and daughters Kathryn Toms, Kristina Maug, and Johanna Kousoulas.

**OMEGA***Penn State*

John F. Ceresini, Jr. (1980)  
Louis W. Martini (1954)  
Virgil W. Wall (1946)

**ALPHA GAMMA***Michigan*

Carter L. Beach (1948)  
Joshua E. Levine (2014)  
Thomas L. Wiese (1979)

**ALPHA DELTA***Purdue*

William C. Morehead (1960)

**ALPHA EPSILON***Stanford*

John H. Lyons (1941)

**ALPHA ZETA***Rochester*

Emory D. Champney, Jr. (1943)  
Denis A. Radefeld (1941)  
Robert N. Williams (1959)

**ALPHA ETA***UNC*

Alvin B. Samuel (1953)

**ALPHA IOTA***Indiana*

Wallace K. Aiken, Jr. (1953)  
John E. Zike (1961)

**ALPHA MU***Iowa State*

Dennis R. Hughes (1964)  
S. Henry Palombi (1946)

**ALPHA NU***Georgia Tech*

Ross H. Howard, Jr. (1956)  
Mace H. Phillips, Jr. (1952) \*

**ALPHA XI***Delaware*

James A. Carbonetti (1953)  
Ferdinand C. Susi, Jr. (1956)

**ALPHA PI***Minnesota*

Erick W. Anderson (1947)

**ALPHA RHO***Washington*

Ernie F. Anderson (1936)  
Raymond A. Dodge, Jr. (1950)  
Richard A. Maugg (1953)  
Hal P. Riney, Jr. (1954)

**ALPHA SIGMA***Oregon*

Earl M. Aldrich, Jr. (1951)  
C. Gordon Childs (1943)  
Sergius R. Gaulke (1944)  
Harry R. Kannasto (1952)

To report news of a brother who has passed on to the Chapter Eternal, email [ihq@thetachi.org](mailto:ihq@thetachi.org) and please include as much of the following as you can: his name, chapter, the date he passed, and an obituary, if one is available.

\* Past Regional Counselor



## CHAPTER ETERNAL

### Carl R. Terzian (Beta Tau/USC 1957), 1957 Colley Award Recipient

October 22, 1935–March 19, 2016

BY DAVID E. DEVOL (GAMMA THETA/SAN DIEGO STATE 1959)

**Carl Terzian was a Renaissance Man.** We first met as undergraduates, he at the University of Southern California, and I at San Diego State.

We were visiting in the new Beta Tau Chapter house on Portland Street in the University Park neighborhood of Los Angeles, not far from the USC campus. Although I was interrupting his studies, I recall being struck by how gracious he was. Carl went on to graduate magna cum laude.

Carl Terzian was always devoted to Theta Chi. He often cited his Fraternity experience in his personal bios, especially his selection for the 1957 Colley Award as the most outstanding undergraduate member of Theta Chi. He participated in several Regional Conferences and was keynote speaker at two International Conventions.

All of Theta Chi was thrilled in 1957 when Carl, as Student Body President at USC, was featured on the Groucho Marx show, *You Bet Your Life*, one of the top television programs of the day. It was seen by Senator John F. Kennedy, which led to a friendship between the two men.

While active in Beta Tau, Terzian mentored Brother Wally Karabian (1960), who followed in his footsteps as Student Body President at USC and also became a Colley Award winner in 1959. Karabian went on to have a distinguished legislative record in the California State Assembly and a long career as a prominent attorney in southern California.

In 1968, with the assistance of Regional Counselor Gordon Hughes, Carl coordinated Tom Haller Day at Dodger Stadium, honoring Tom Haller (Rho/Illinois 1959), the popular catcher for the Los Angeles Dodgers.

The following year, Carl founded Carl Terzian Associates. By the time his firm reached its 40th year, people were calling Terzian southern California's "Dean of Public Relations and Business Networking."

Brother Ron Ramos (Gamma Theta/San Diego State 1968), later to be elected to the Grand Chapter, recalls meeting Carl at a Theta Chi Regional Conference. So impressed was Ramos that he eventually contracted Terzian to handle the public relations affairs of his homebuilding company in San Diego during the 1980s.

For 55 years, Terzian provided public relations counsel to causes, organizations, and individuals throughout the country. Serving over 5,000 clients, assisting hundreds of non-profit interests, and speaking before thousands of audiences, Terzian was nationally recognized and respected. He was Chairman of the Board of Carl Terzian Associates upon his passing.

Due to his business-to-business public relations services and his dedication to non-profits, Terzian received numerous local, national, and international awards and honors, which included the city and county of Los Angeles, the California Assembly and Senate, the United States Congress, and her Majesty the Queen of England.

**Carl Terzian was a Resolute Man.** He remained gracious his entire life, and was always accessible to his Fraternity brothers. Brother Carl Terzian was very proud of his Fraternity, and truly embodies Theta Chi for Life.



#### ALPHA TAU

*Ohio University*

William J. Brann (1946)  
Ronald G. Curtice (1957)  
Joseph F. Hamburg, III (1974)  
Richard Kusa (1951)  
Robert H. Lundberg (1946)  
Alex Nagy (1951)

#### ALPHA UPSILON

*Nebraska*

Roger D. Cook (1953)

#### ALPHA PHI

*Alabama*

John O. Bolton (1973)  
John D. Bonham (1950)  
Bryant C. Bowden (2000)  
Ross J. Briley (1990)  
H. Dixon Forrester, Jr. (1967)  
William O. Fry, Jr. (1948)  
Ronald W. Garikes (1980)  
William P. Gore, Jr. (1947)  
Richard H. Gresham (1966)  
Jeffrey V. Haynes (2006)  
Jerry L. Ledbetter (1960)  
Jerry W. Lynn (1963)  
Herbert C. Moore (1958)  
Robert H. Mudd, III (2005)  
John F. Overholt (1938)  
Harry J. Pfeifer (1942)  
Thomas G. Ramey (1938)  
Richard W. Vickers (1973)

#### ALPHA CHI

*Syracuse*

David S. Greene (1986)  
Raymond V. Hamjian (1949)  
Edward M. Lippoth, Jr. (1951)

#### ALPHA PSI

*Maryland*

Joseph A. Eikenberg (1948)  
Paul J. Richardson (1983)  
Michael F. Schuncke (1952)

#### ALPHA OMEGA

*Lafayette College*

James R. Hartman (1967)

#### BETA ALPHA

*UCLA*

Mark D. Graham (1966)

#### BETA GAMMA

*North Dakota*

James P. Fitzsimmons (1974)  
Ralph D. Kieley (1967)

#### BETA DELTA

*Rutgers*

Michael J. Basarab (1959)  
G. Mount Fitzpatrick (1950)  
Robert W. Patton (1949)  
Herbert C. Robbins (1956)

#### BETA EPSILON

*Montana*

George G. Ryffel (1941)

#### BETA ETA

*Washington (MD)*

Charles D. Case (1951)  
John T. Cox (1951)  
Peter D. Murphy (1975)  
William W. Thompson (1938)

#### BETA THETA

*Drexel*

Charles D. Reese (1946)  
Richard P. Voss (1965)

#### BETA IOTA

*Arizona*

John N. Torchiana (1949)

#### BETA LAMBDA

*Akron*

Walter C. Eckert (1948)  
John E. Stenger (1944)  
Herschell R. Woods, Jr. (1950)

#### BETA NU

*Case Western*

Raymond W. Krieger (1953)

#### BETA OMICRON

*Cincinnati*

Harry W. Moeller (1937)  
Howard Stuewe (1948)

#### BETA RHO

*Illinois Wesleyan*

Alfred T. Wright (1934)

#### BETA SIGMA

*Lehigh*

Gordon M. Clark (1942)  
James D. Dunleavy (1964)  
Royal V. Mackey (1940)

#### BETA TAU

*USC*

Carl R. Terzian (1957)

#### BETA PHI

*Nevada*

Gene A. Whitley (1972)

#### BETA CHI

*Allegheny College*

James D. McCoy (1944)

#### BETA OMEGA

*Susquehanna University*

Richard M. Ditmars (1960)

#### GAMMA DELTA

*Florida Southern*

Bob W. Stanley (1951)

#### GAMMA EPSILON

*Western State*

William R. Lefevre (1949)

#### GAMMA ZETA

*Oklahoma State*

George H. Duckwall (1956)



## **GAMMA THETA**

*San Diego State*

Charles E. Koehler (1950)  
Joseph H. Tausch (1950)

## **GAMMA KAPPA**

*Miami (OH)*

Matthew F. Balasko (1951)  
Berle K. Hufford, Jr. (1962)  
O. Roger Taylor (1953)

## **GAMMA MU**

*Bowling Green State*

Charles D. Eggleston (1957)  
Leo A. Mangum (1952)  
Yewell W. Steinmetz (1969)

## **GAMMA XI**

*San Jose State*

William E. Byers (1949)  
Leslie W. Johnson (1955)

## **GAMMA RHO**

*Florida State*

Joseph G. Adams (1981)  
John M. Brogle (1966)  
Oliver J. Bucknell (2015)  
Brian P. Christman (1983)  
Francis G. Cibula, Jr. (1965)  
Brian S. Donohue (1981)  
Roderic R. Dugger, III (1970)  
Richard W. Johnson (1964)  
William D. Magill, Jr. (1972)  
Malcolm J. Rooney (1960)  
Raymond J. Wise (1971)

## **GAMMA UPSILON**

*Bradley*

C. Richard Gillett (1956)

## **GAMMA PHI**

*Nebraska Wesleyan*

Gene L. Engel (1963)  
William D. Heller (1950)  
Scott C. Morgan (1987)  
John V. Olson, Jr. (1963)

## **GAMMA PSI**

*Puget Sound*

James M. Andrews (1964)  
Hugh T. Behny (1976)  
Tommy G. Brown (1967)  
Robert M. Donnelly (1961)  
George H. Rogerson (1960)

## **DELTA ALPHA**

*Linfield College*

Robert E. Townsend (1968)

## **DELTA BETA**

*Georgia*

Steven B. Tomlinson (1979)  
Warren G. Young, Jr. (1955)

## **DELTA ZETA**

*Nebraska-Omaha*

Kenneth W. Beehler (1981)  
Kenneth J. Garry, Jr. (1970)  
Raymond D. Hampton (1953)

## **DELTA ETA**

*Colorado State*

Daniel N. Ebert, DVM (1957)

## **DELTA IOTA**

*Northwestern*

George H. Heilborn (1956)  
Edward P. Ver Planck (1952)

## **DELTA KAPPA**

*Ball State*

Vance A. Darr (1977)  
Fredrick R. Spencer (1964)

## **DELTA XI**

*Valparaiso*

William R. Buehring (1960)  
Frederick C. Hohenstein (1952)  
Charles F. Lembke (1954)  
Thomas R. Schramm (1967)

## **DELTA OMICRON**

*Gettysburg College*

Ellwood M. Powell (1966)

## **DELTA PI**

*Indiana State*

Brent A. Lantz (1986)

## **DELTA RHO**

*North Carolina State*

Vance A. Apple (1960)  
William P. Banner, Jr. (1963)  
Raymond T. Buckner, Jr. (1954)

Richard S. Buynitzky (1960)

John F. Chappell (1961)  
John H. Clayton, Jr. (1959)  
Robert V. Hendricks, Jr. (1966)

Lynn E. Hill (1978)  
Lacy F. Langdon (1963)  
Charles L. Lawrence (1973)  
Charles J. MacIsaac (1969)  
Gary D. Miller (1960)  
Murdoc B. Murchinson (1958)

Dick R. Orr (1954)  
William C. Parks (1952)  
Daniel F. Raper (1960)  
Charles R. Riggins (1964)  
Donald R. Rummier (1959)  
William D. Scott, III (1976)  
Julian C. Shaw, Jr. (1967)  
Henry J. Taylor (1957)  
Robert C. Webber (1960)  
Jared D. Wolfe, IV (1961)

## **DELTA TAU**

*Kent State*

Robert G. Oana (1956)  
Richard J. Velzy (1956)

## **DELTA PHI**

*North Texas*

David W. Maxwell (1958)  
Donald W. Moeller (1966)

## **Mary Lasher Barnette, Pi Beta Phi Sorority**

*March 14, 1922–March 9, 2016*

Mary Lasher Barnette, daughter of past National President and past Editor of *The Rattle*, George Star Lasher (Alpha Gamma/Michigan 1911), passed away this spring in Richmond, IN. She broke a number of barriers for women; serving as the first female reporter for a newspaper trade journal, as well as being the first female in the retail advertising division of the American Newspaper Publishers Association. Mary was a member of the Ohio Alpha Chapter of Pi Beta Phi at Ohio University, where she remained active even into her later years. Theta Chi always played a major role in her life, however. The reception of her first wedding was even held at the Alpha Tau/Ohio University chapter house. During her father's 39th year of editing *The Rattle*, he suffered a stroke and was no longer able to complete his responsibilities. Mary took over his role, and served as the first female editor of *The Rattle* in 1964. During this time she was also an editor for *The Arrow of Pi Beta Phi*.

Towards the end of her career, she served 11 years as the News Service Director of SUNY Buffalo. Sadly, in her retirement, Mary Lib, as she was known by her friends, developed Alzheimer's disease and passed away before her 94th birthday. In a final gesture of kindness, her brain was donated to the Indiana Alzheimer Disease Center.



## **DELTA OMEGA**

*Ripon College*

John H. Peot (1955)

## **EPSILON ALPHA**

*High Point University*

John P. Winters (1969)

## **EPSILON GAMMA**

*Widener University*

Dale R. Baker (1965)

## **EPSILON DELTA**

*Youngstown State*

Thomas J. Heyn (1967)  
Thomas M. Sims (1976)

## **EPSILON THETA**

*Tufts*

Harvey R. Jones, Jr. (1958)

## **EPSILON IOTA**

*East Carolina University*

David A. Burkette (1964)

## **EPSILON MU**

*Eastern Michigan Univ.*

James F. Manley (1955)

## **EPSILON XI**

*Clarion University*

Roland F. Davis (1960)

## **EPSILON PI**

*Northern Illinois*

Thomas R. Hanley (1971)

## **EPSILON SIGMA**

*Wagner College*

George Bohsack (1962)

## **EPSILON OMEGA**

*CSU-Sacramento*

William F. Benson (1973)

## **ZETA BETA**

*Adrian*

Marshall P. Ricker (1984)

## **ZETA PI**

*Old Dominion*

Robert N. Bray (2009)

## **ZETA SIGMA**

*Wisconsin-River Falls*

Terrance D. Lofboom (1985)  
John S. Millar (1980)  
Roger D. Nelson (1968)

## **ZETA OMEGA**

*West Chester*

Timothy P. Callahan (1978)

## **ETA GAMMA**

*Morehead State*

John M. Alcorn, CPA

## **ETA PI**

*East Stroudsburg*

Stephen D. Clay (1987)  
Gerald P. Strahlendorf (1975)  
Kevin K. Surdi (1978)

## **ETA SIGMA**

*Arkansas Tech*

George E. Lawton (1983)

## **ETA UPSILON**

*Texas A&M*

Robert W. Hogan (1979)

## **ETA PSI**

*UAB*

James M. Perryman (1988)

## **THETA IOTA**

*UC-Santa Cruz*

Mynor R. Fahr (1994)  
Aaron I. Shepard (2000)

## **THETA MU**

*CSU-East Bay*

Louis T. Staley, Jr. (1993)

## **THETA PI**

*Bridgewater State*

Christopher L. Oliveira (1991)

## **THETA SIGMA**

*UC-Santa Barbara*

Andrew G. Shotell (2000)

## **BETA KAPPA**

**FRATERNITY**

Warren A. Shoecraft

Theta Chi Fraternity, Inc.  
PO Box 503  
Carmel, IN 46082

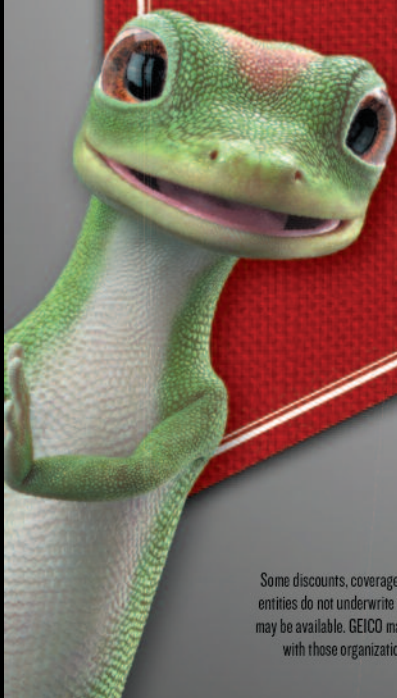
Non-Profit Org  
U.S. Postage  
PAID  
Permit No. 374  
Bolingbrook, IL

**PARENTS:** This magazine is sent to your son's home address while he is still in college; we hope you enjoy reading it before he does. If he has left college and is not living at home, please send us his new permanent address. (Please refer to the Table of Contents.) THANK YOU!

# GREAT NEWS!

GEICO understands the importance of saving money. **Theta Chi brothers** could save even more with a special discount. Get a *free* quote to see how much more you could save today!

[geico.com/greek/thetachi](http://geico.com/greek/thetachi)



**GEICO**  
#MemberDiscount

  
THETA CHI  
FRATERNITY

Some discounts, coverages, payment plans and features are not available in all states or all GEICO companies. GEICO contracts with various membership entities and other organizations, but these entities do not underwrite the offered insurance products. Discount amount varies in some states. One group discount applicable per policy. Coverage is individual. In New York a premium reduction may be available. GEICO may not be involved in a formal relationship with each organization; however, you still may qualify for a special discount based on your membership, employment or affiliation with those organizations. GEICO is a registered service mark of Government Employees Insurance Company, Washington, D.C. 20076; a Berkshire Hathaway Inc. subsidiary. © 2016 GEICO