

## 1970 Ford Mustang BOSS 302



We start our inspection with the exterior of the vehicle. The body shows signs of a complete repaint. Multiple paint touch-up marks are visible at the front fenders and doors. The front shows some paint chips and flaking. Both doors show minor paint chips and touch-up. The driver side door shows surface rust at the lower inner left corner. Signs of surface rust were also visible at the fender arches and left rocker panel. The right quarter panel shows a small ding near the trunk lid. The trunk lid shows a small rust spot at the right seam. The spoiler shows a crack in the paintwork towards the passenger side. No signs of collision damage or frame repair were found at the time of inspection. All the glass was found in good condition. The body seals show deterioration consistent with age of the vehicle. All exterior lighting operates as designed. The vehicle shows a matching set of Goodyear Eagle ST tires. The tires show minor signs of dry rot. The wheels show some corrosion spots. The underside shows areas of surface rust. See pictures.

The interior of the vehicle shows wear consistent with age and mileage. The seats show minor wear and tear. The driver side front seat back shows signs of previous repairs. The interior trim panels and door trim show wear consistent with age. The passenger side door trim shows a small ding. The dashboard shows a couple of cracks due to age. Both window regulators were found operating as designed. The seller advised me that the dash clock and radio are not operational. The heater was

found operating as designed. The carpet looks clean. There were no signs of smoking, or unusual smells found in the vehicle at the time of inspection.

During the mechanical part of the inspection all the fluids were found at normal level. The engine shows oil residue around the timing cover, as well as the engine oil pan, and passenger side valve cover seam. Fluid residue was also found around the transmission housing. No active fluid drips were observed at the time of inspection. No visible issues were found concerning the vehicle's suspension components. The suspension bushings show deterioration consistent with age. The starting and charging system was found operating as designed.

The vehicle starts right up with no issue. There is no smoke. The vehicle idles well. The power delivery is smooth. The clutch operates as designed. The steering is good and direct. The vehicle tracks straight. The brakes work well. A knocking noise was observed when going over road bumps. This issue will need further diagnostic. Please see photos and below for more info.

Vehicle Info	
Year - 1970	
Make - Ford	
Model - Mustang BOSS 302	
Mileage - 56382	
Transmission - Manual	
VIN Number - OTO2G109850	
Stock Number - N.A.	
Interior - Leather	
Interior Color - Black	
Body Color - Yellow	
Engine - 8 Cylinder	
Drive Type - Rear Wheel Drive	
Fuel Type - Gas	

Exterior	
Wiper Blades	✓
Windshield Washer	✓
Body Alignment	✗
There was some general misalignment to body panels, see photos.	
Scratches	✗
Rear left quarter shows a scratch, see photos. There are minor misc scratches around the vehicle. Most too small to see in photos.	
Dings	✗
Rear right quarter shows a ding near the trunk lid. Please see photos.	
Dents	✓
Paint Condition	✗
Vehicle shows signs of repaint and multiple paint touch-up marks. Please see photos.	
Body Seals	✗
The body seals around the windows are showing signs of age and wear. This includes the doors, windows, trunk, and other miscellaneous body seals.	
Rust	✗
Vehicle shows surface rust spots at multiple body panels. Please see photos. The underside shows areas of minor surface rust. See pictures.	
Exterior Lights	✓
Door Mirrors	✗
Door mirror housings show paint chips. Please see photos.	
Bumpers	✓
Side Moldings	✓
Frame Damage	✓

Mechanical	
Air Filter	✓
Battery Condition	✓
Charging System	✓
Cooling Fan Condition	✓
Radiator Cap Sealing Properly	✓
Hoses	✓
Radiator	✓
Engine Coolant	✓
Coolant Leaks	✓
Belts	✓
Engine Oil	✓
Engine Fluid Leaks	✗
Engine oil residue was found at the rear part of the right valve cover, front timing cover, and engine oil pan. No active leak was observed at time of inspection.	
Transmission Leaks	✗
Transmission pan shows fluid residue. With no evidence of active leaks, the area should be cleaned to determine leak origin.	
Brake System	✓
Brake Fluid Leaks	✓
Differential leaks	✓
Muffler System	✓
Shocks and bushings	✗
Suspension bushings show signs of deterioration due to age.	
Ball Joints and Tie Rods	✓
Modifications	✗
Seller stated original engine was replaced. No documentation was provided concerning engine modification.	

Road Test	
Road Test	✓
Engine Performance	✓
Transmission performance	✓
Clutch Performance	✓
Differential Performance	✓
Wheel Bearing Performance	✓
Braking Performance	✓
Suspension Performance	✗
A knocking noise was observed when going over road bumps. With no visible signs of failure, the suspension should be further inspected by a	



Glass	✓
Body Filler?	✓
Hood	✗
Hood shows panel misalignment at the left side as well as some rust spots and paint touch-up marks.	
Doors	✗
Doors show paint chips and touch-up. Driver side door shows rust at the left bottom corner. Please see photos.	
Floors	✗
Driver and passenger side floor pans show surface rust.	
Rockers	✗
Driver side rocker shows surface rust around the door seam. Please see photos.	
Quarter Panels	✗
Left quarter panel shows signs of surface rust at the door seam. Right quarter panel shows signs of surface rust at the inner side of the trunk. Please see photos.	
Chrome	✓

Interior	
Steering Wheel	✓
Horn	✓
Seat Condition	✗
Driver side front seat back shows evidence of repairs. Please see photos.	
Seat Belts	✓
Clock	✗
The clock does not work.	
Radio/Navigation	✗
The radio does not work.	
Inner Door Panels	✗
The inner door panels show wear consistent with age.	
Window Function	✓
Center Console	✓
Dash	✗
The dash shows cracks due to age.	
Sun Visors	✓
Dash Lights	✓
Dash Gauges	✓
Heater	✓
Carpet	✓
Floor Mats	✓
Cigarette Use	✓
Unusual Odors	✓
Headliner	✓
Blower Motor	✓
Interior Trim	✓
Inner Trunk	✓

repair facility.	
Steering Performance	✓
Engine Starting	✓
TIRES/WHEELS	
Spare Tire	✓
Tire Manufacturer	
Driver's Front - Goodyear Eagle St	
Passenger's Front - Goodyear Eagle ST	
Driver's Rear - Goodyear Eagle ST	
Passenger's Rear - Goodyear Eagle ST	
Tire Size	
Driver's Front - 245/60R15	
Passenger's Front - 245/60R15	
Driver's Rear - 245/60R15	
Passenger's Rear - 245/60R15	
Tire Condition	
Driver's Front - Dry Rot	
Passenger's Front - Dry Rot	
Driver's Rear - Dry Rot	
Passenger's Rear - Dry Rot	
Wheel Condition	
Driver's Front - Corrosion	
Passenger's Front - Corrosion	
Driver's Rear - Corrosion	
Passenger's Rear - Corrosion	
Tire Tread	
Driver's Front - 9/32	
Passenger's Front - 9/32	
Driver's Rear - 7/32	
Passenger's Rear - 5/32	



**10/32 OR MORE**

Tires have plenty of tread!  
(standard)

**8/32 OR MORE**

Tires have plenty of tread!  
(low profile)

**5/32 TO 7/32**

Tires will need replacement soon!

**4/32 OR LESS**

Tires need replacement!



1









3









5





































































































































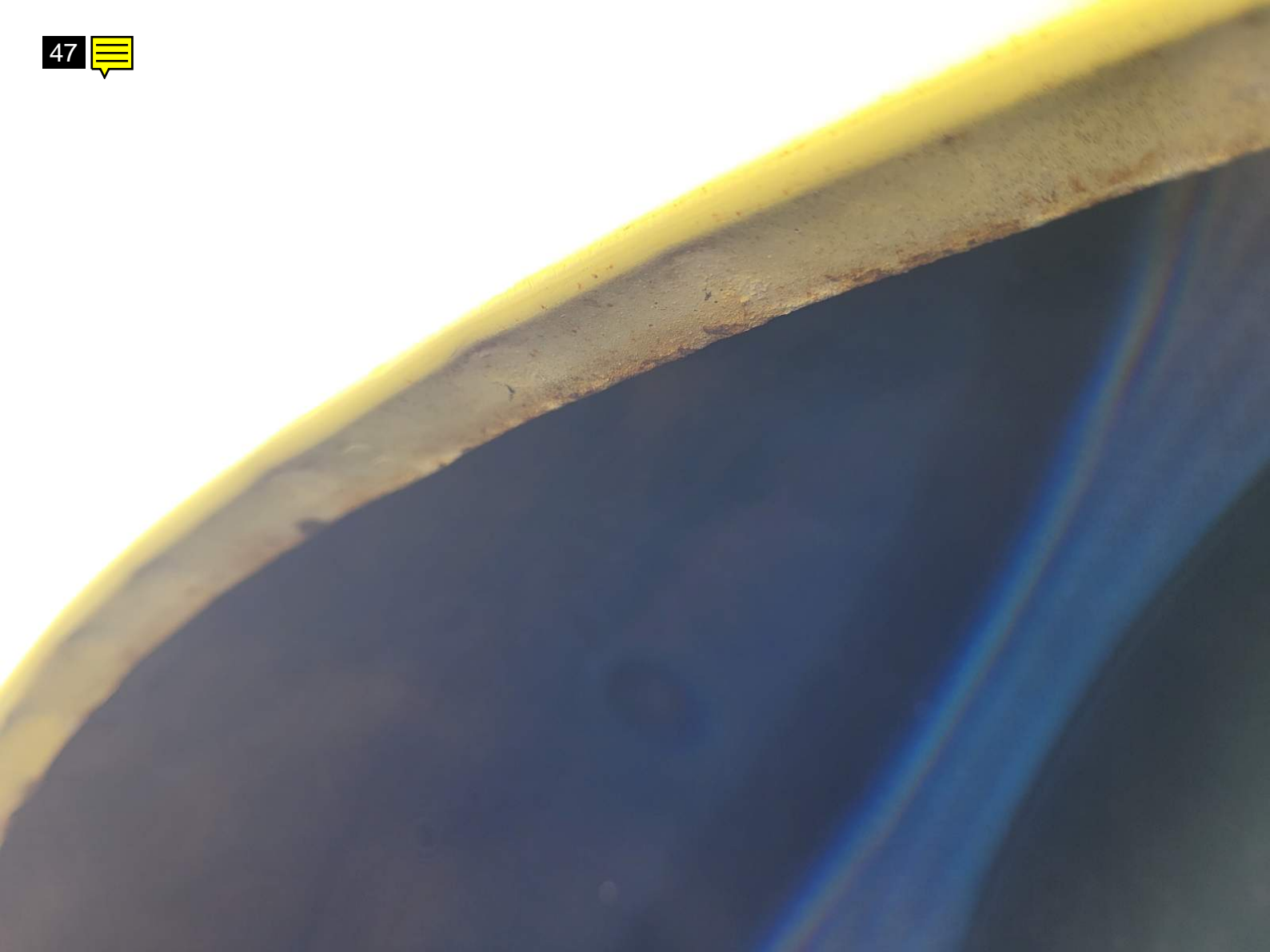




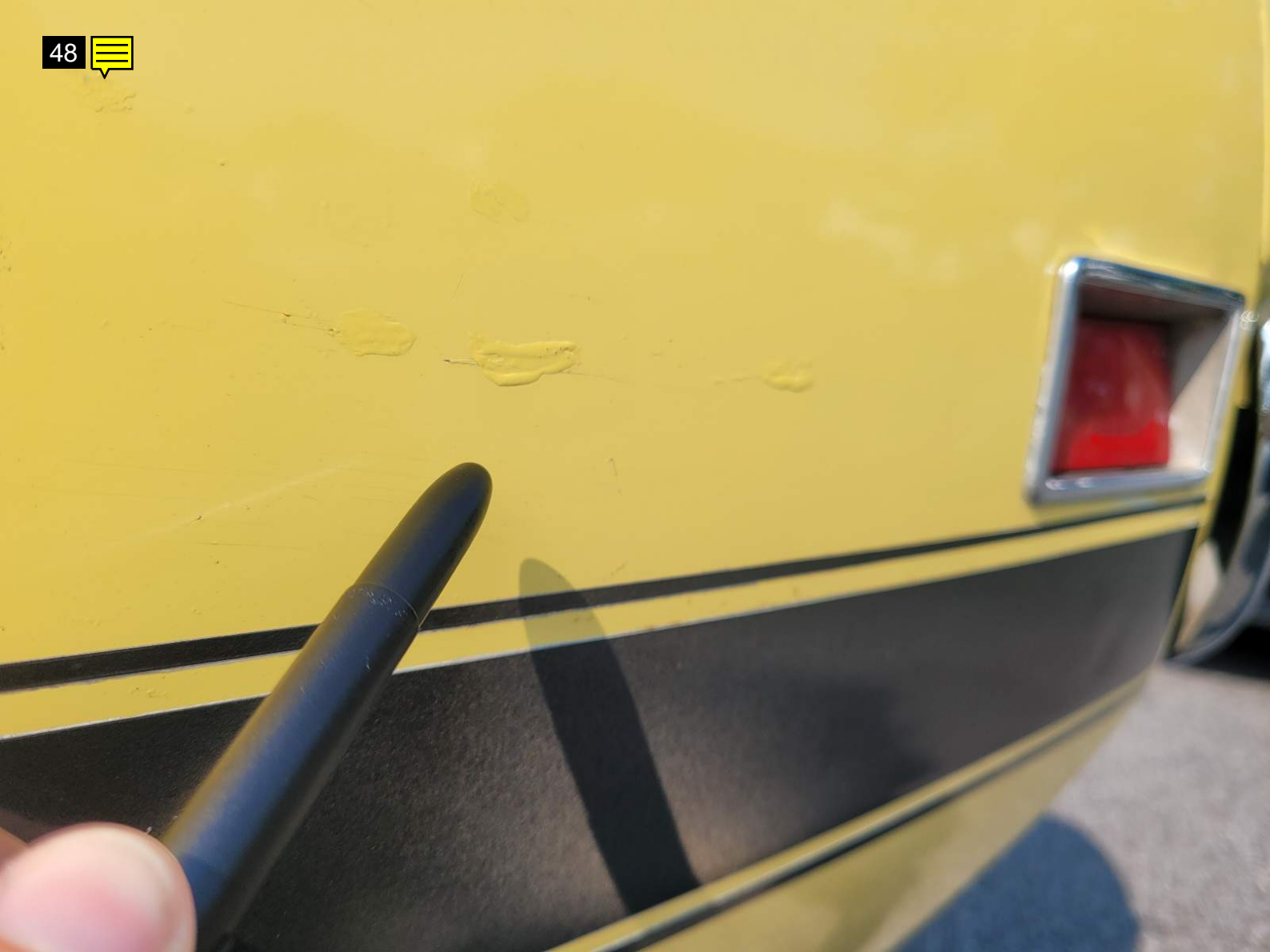






































































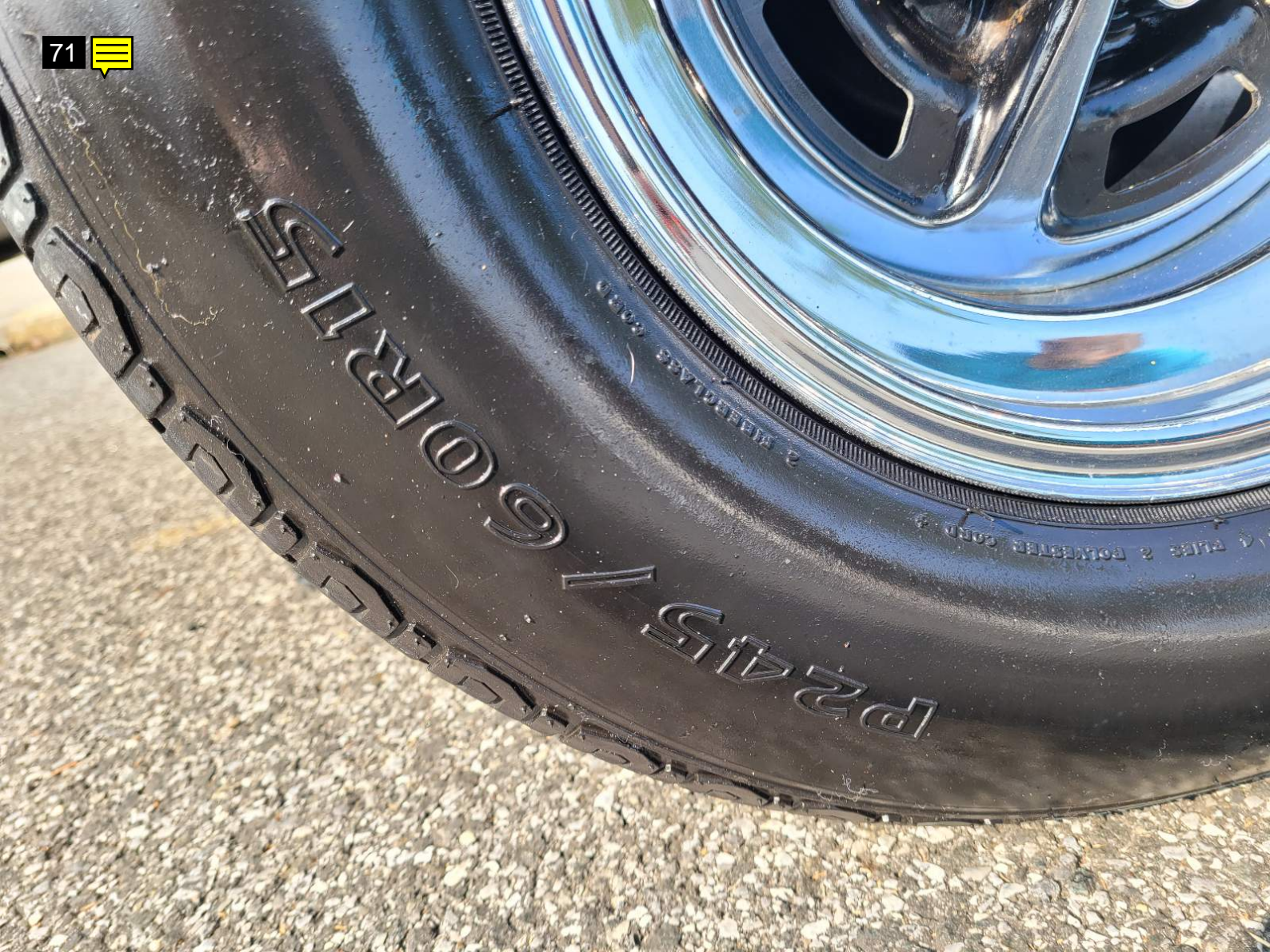




















285799-00-2LVZ  
TREAD 9 PLIE



































































































































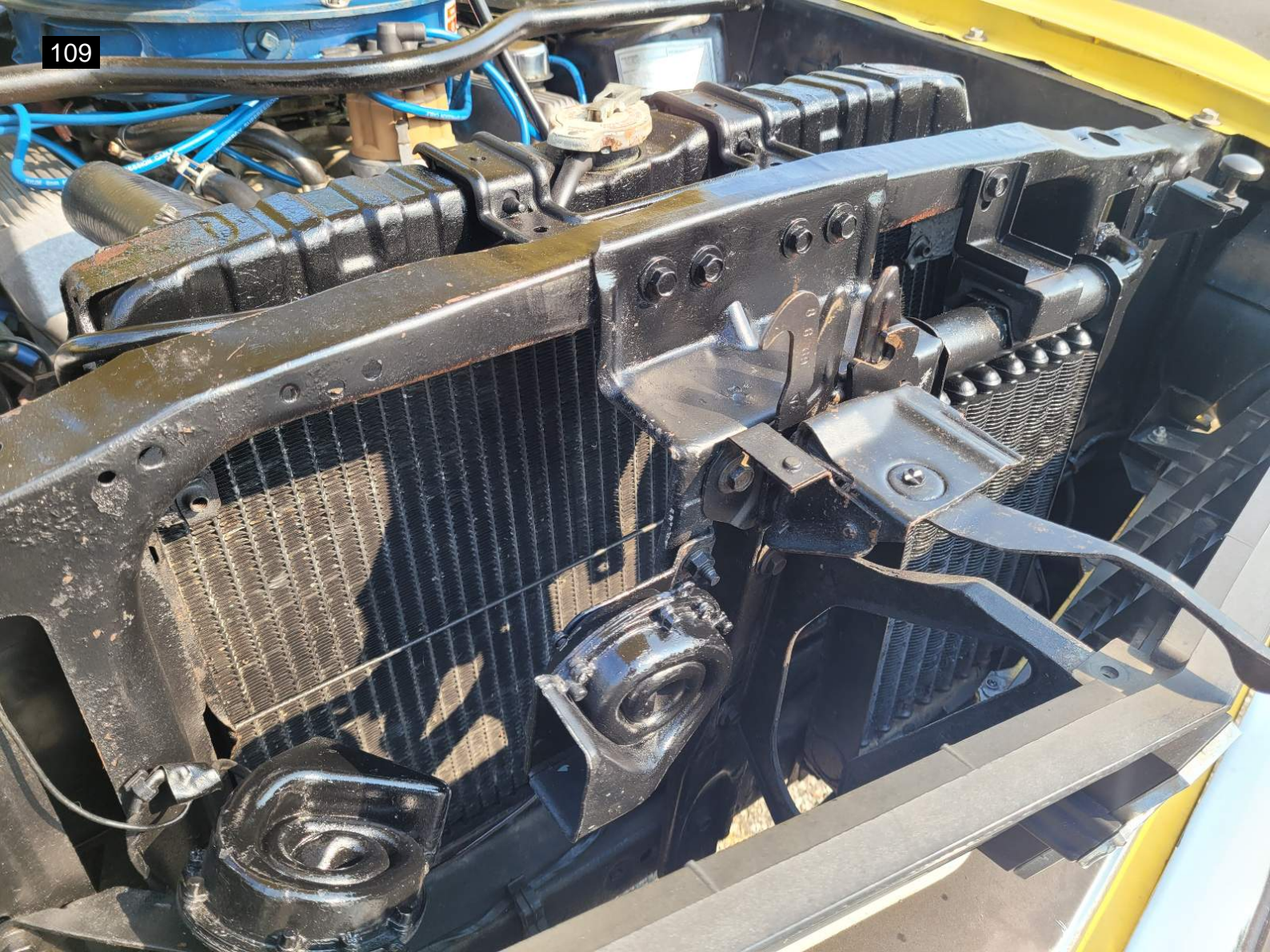




















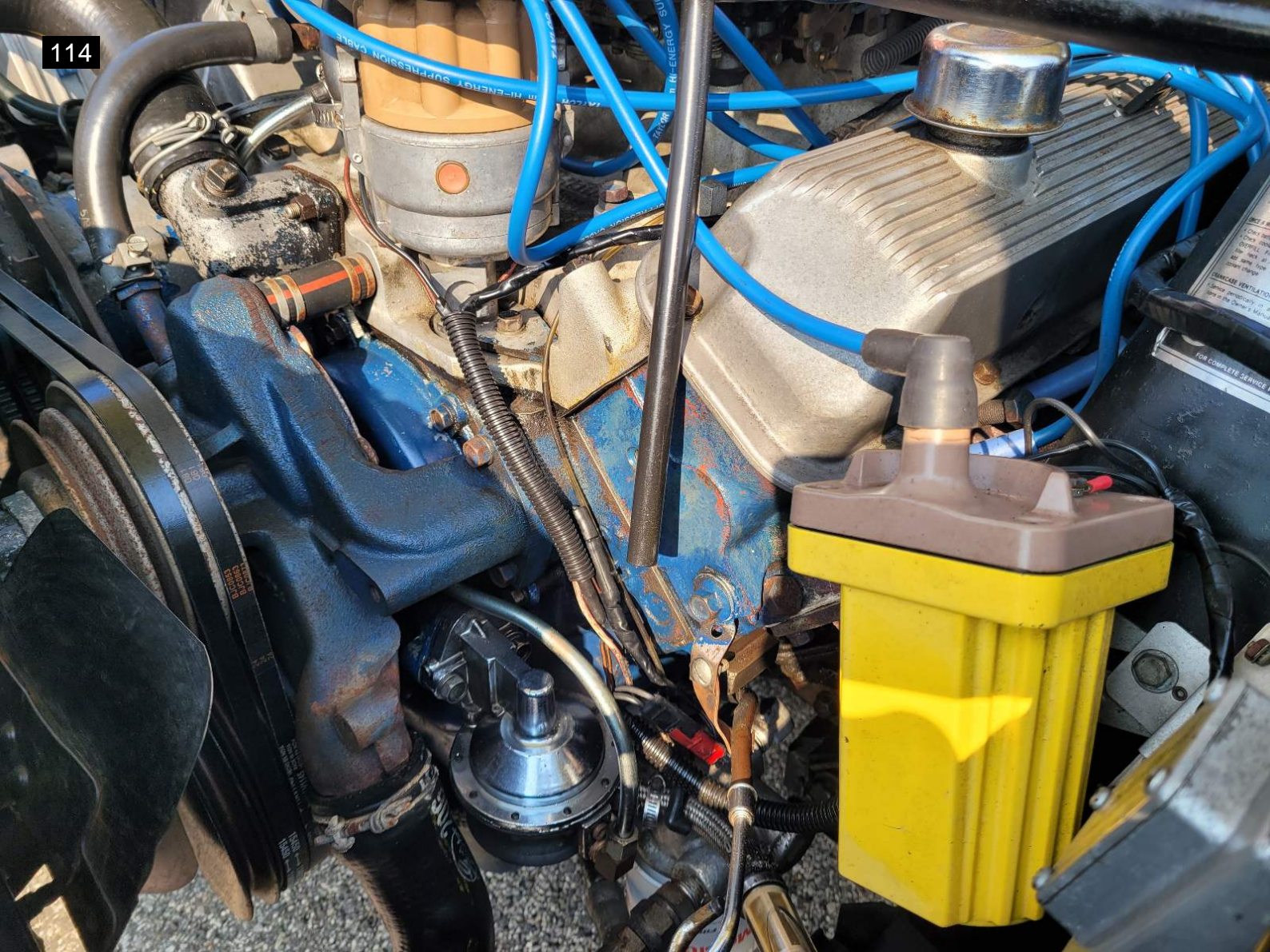












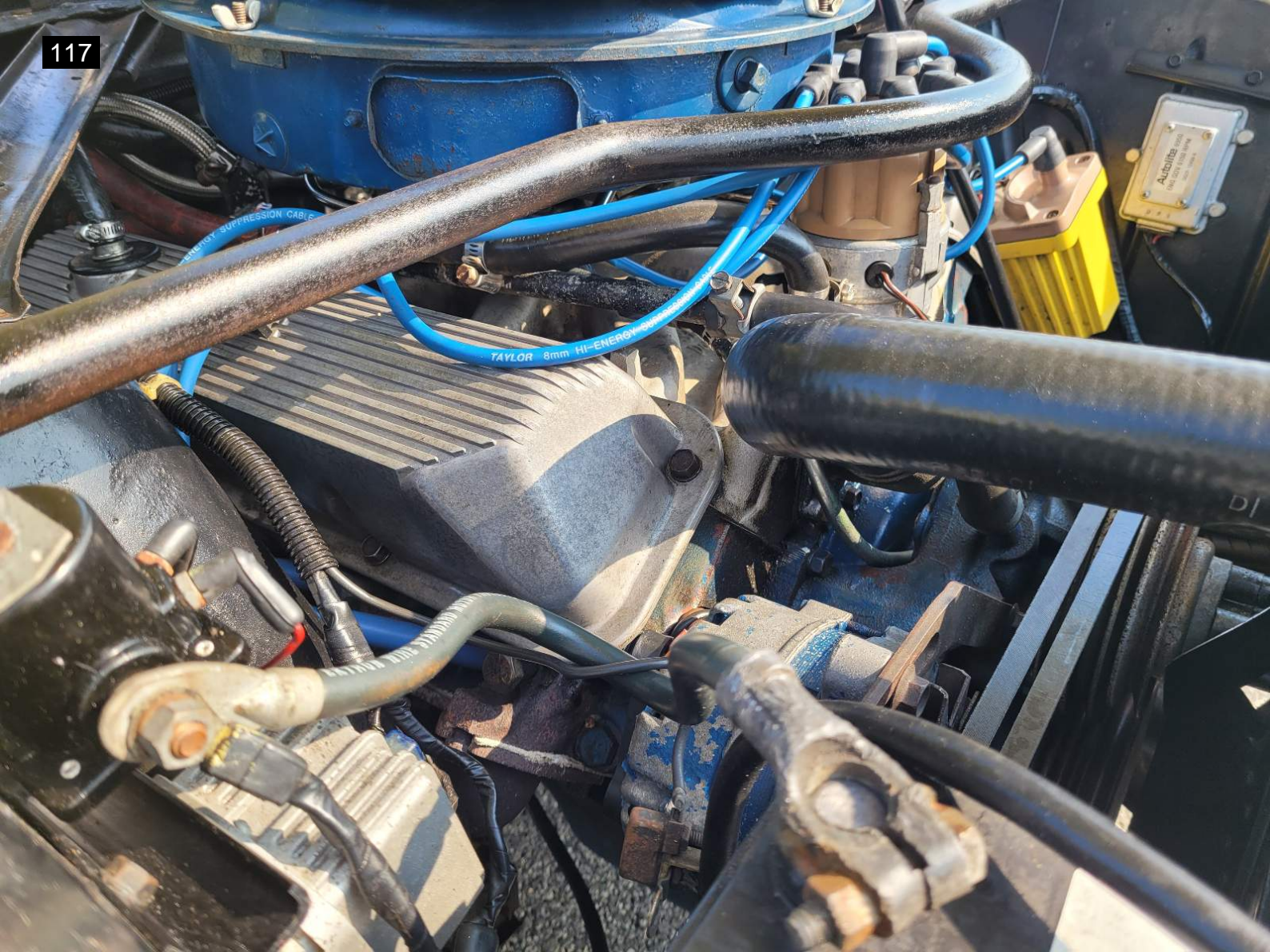
















37110 24001U  
700 CCA 120 RC



Distributed by Kia Motors America, Inc., Irvine, CA 92618



6 56489 28234 7

**⚠ DANGER / POISON**



SHIELD  
EYES  
EXPLOSIVE  
GASES  
CAN CAUSE BLINDNESS  
OR INJURY



NO  
SPARKS  
FLAMES  
SMOKING



SULFURIC ACID  
CAN CAUSE  
BLINDNESS OR  
SEVERE BURNS



KEEP OUT OF THE REACH OF CHILDREN  
DO NOT TIP KEEP VENT CAPS TIGHT AND LEVEL  
FLUSH EYES IMMEDIATELY  
WITH WATER, GET  
MEDICAL HELP FAST

CAUTION: FOR SAFE JUMP STARTING FOLLOW  
INSTRUCTIONS IN VEHICLE OWNERS MANUAL  
IF NOT AVAILABLE SEEK SERVICE ASSISTANCE.



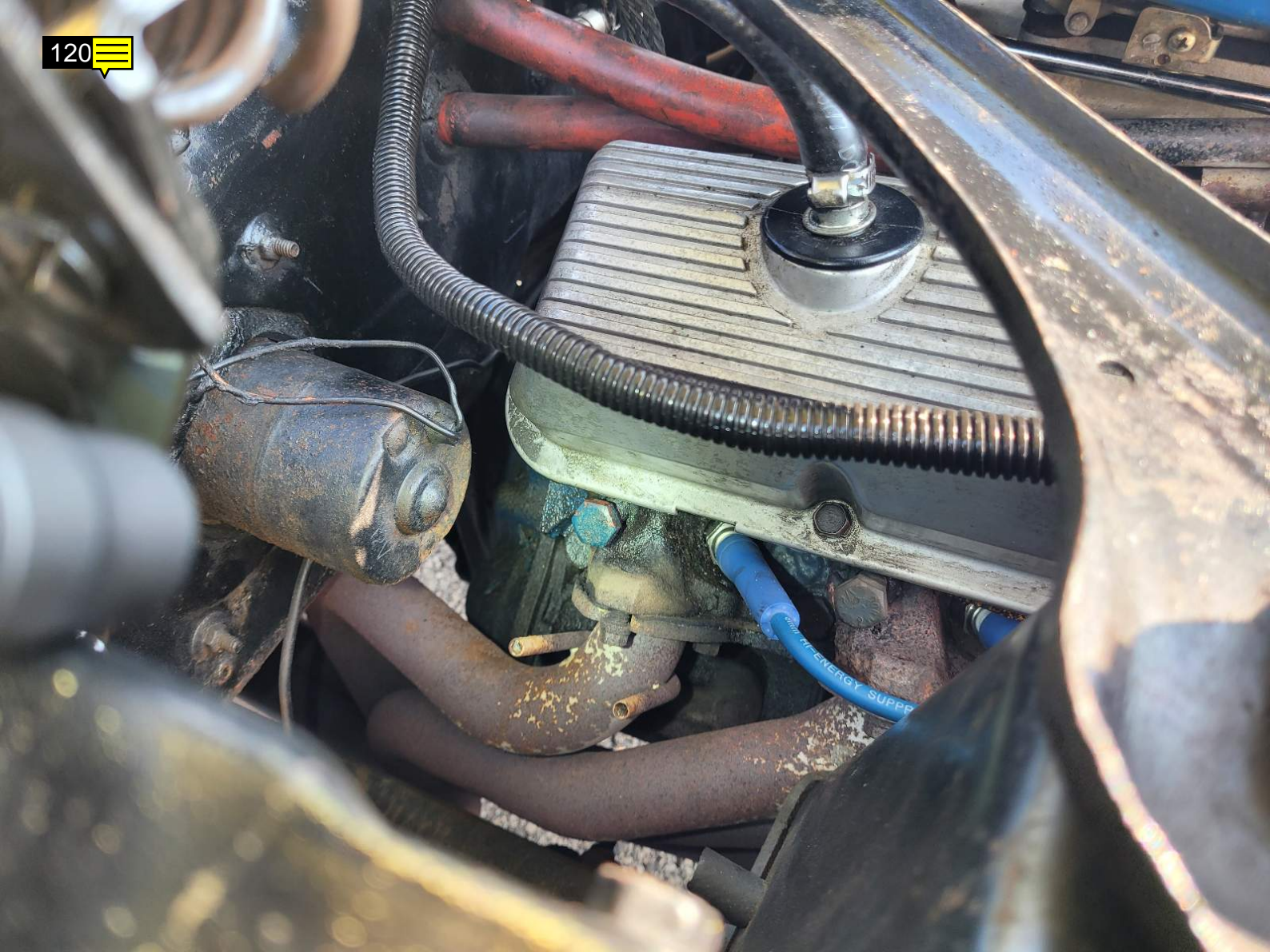
RECYCLE

B31720B

























**WHEN REFUELING:**

- Check engine oil —
- ONLY add same type oil as recommended under oil change

**ONCE A MONTH:**

- Check battery fluid level
- Check coolant antifreeze level — DO NOT OVERFILL. Fill only to 1" below bottom of filler neck at operating temperature. ONLY add same type antifreeze as that used for coolant change

**CRANKCASE VENTILATION SYSTEM:**

- Service periodically in accordance with directions in the Owner's Manual

**EVERY 6000 MILES OR 6 MONTHS:**

- Change oil and oil filter —  
ONLY use 10W-30 GRADE OIL for temperatures above -10°F labeled "Meets or exceeds car makers requirements — sequence tested M S"  
— Use ROTUNDA 6000 Mile Oil and Autolite 6000 Mile Filter for best service —

**ANTI-FREEZE-COOLANT:**

- Change every 36,000 miles or 2 years
- Cooling system originally protected to 35°F
- ROTUNDA permanent antifreeze mixed 50/50 with water gives -35°F protection

DESIGN ARE RECOMMENDED FOR YOUR CAR

FOR COMPLETE

























































**SPACE SAVER SPARE**

## INFLATION INSTRUCTIONS

- 1 Remove space saver spare tire from car and place on ground.
- 2 Remove valve cap from tire valve stem.
- 3 Attach inflator bottle by following instructions (shown on inflator bottle label).  
**CAUTION:** Hold bottle by cardboard container since bottle becomes extremely cold during tire inflation.
- 4 When gas ceases to discharge into tire (approximately 2 minutes), remove empty bottle, replace valve cap, tire is now ready to use.  
To deflate the space saver for storage, use end of valve cap to remove valve core (do not inflate, replace core and cap).

**INFORMATION:** The space saver spare tire with which your car is equipped gives you approximately 25% more luggage space.  
The tire was designed for limited use to enable you to drive to the nearest tire service center to effect repairs to the disabled tire. It is not for the tire's intended long-term use. Use of the tire for extended periods of time is a substitute for conventional tires, is not recommended.  
If for some reason the nearest tire service center is unable to effect repairs, the tire should be used and additional driving limited to a maximum of 50 miles. If it is necessary to drive further than the 50 miles, the pressure in the spare tire should be checked and if it is not below the recommended pressure, it may be used to drive to the nearest tire service center.  
Although the space saver spare allows you more luggage space, the tire is not for maximum load rating of your car, which is given in your owner's manual.

**CAUTION: DISPOSE OF CAN. DO NOT INCINERATE OR PUNCTURE.**

## JACK USAGE and STOWAGE



**CAUTION:** SET PARKING BRAKE AND BLOCK DIAGONALLY OPPOSITE WHEEL BEFORE JACKING.

SEE OWNER'S MANUAL FOR DETAILED INSTRUCTIONS.

**CAUTION:** DO NOT GET UNDER CAR WHILE IT IS SUPPORTED BY JACK ALONE.

CX28-17093 C































































0T02G109850



NEW YORK

506876DW

0T02G109850  
1970 FORD 2DSD  
BOSSTANG SRF X X  
BOSSTANG SRF X

04/09/23

4

23

VEHICLE REGISTRATION

NEW YORK STATE

SAFETY INSPECTION CERTIFICATE

17418699

2022

T

JAN	DEC
FEB	NOV
MAR	OCT
APR	SEP
MAY	
JUL	AUG















MANUFACTURED BY  
FORD MOTOR COMPANY 109850

09/69 THIS VEHICLE CONFORMS  
TO ALL APPLICABLE FEDERAL  
MOTOR VEHICLE SAFETY STANDARDS  
IN EFFECT ON DATE OF  
MANUFACTURE SHOWN ABOVE.

VEH. IDENT NO.		BODY	COL.
OT02G109850		63B	D
TRIM	AXLE	TRNS	DSO
EAL	V	6	22

NOT FOR TITLE OR REGISTRATION

MADE IN U.S.A.































































































MUS



















































































































































**Note for Image 11:**

paint chips at RF fender

**Note for Image 12:**

RF fender wheel arch surface rust

**Note for Image 15:**

paint chips at RF

**Note for Image 16:**

paint flaking at passenger side bumper

**Note for Image 17:**

paint chips at LF

**Note for Image 18:**

surface rust at LF fender

**Note for Image 20:**

paint flaking at driver side of bumper

**Note for Image 21:**

rust at driver side of hood

**Note for Image 22:**

paint overspray at passenger side headlight trim

**Note for Image 26:**

paint overspray at passenger side A pillar

**Note for Image 27:**

paint chips at passenger side A pillar

**Note for Image 28:**

paint touch-up at left fender

**Note for Image 29:**

paint deterioration at left fender

**Note for Image 30:**

paint touch-up at left fender

**Note for Image 37:**

passenger side door

**Note for Image 38:**

passenger side door



**Note for Image 39:**  
passenger side door

**Note for Image 42:**  
driver side door

**Note for Image 43:**  
driver side door

**Note for Image 45:**  
scratch at left quarter

**Note for Image 47:**  
surface rust at left rear wheel arch

**Note for Image 48:**  
left quarter

**Note for Image 51:**  
right quarter

**Note for Image 52:**  
ding at right quarter

**Note for Image 55:**  
surface rust at right rear quarter

**Note for Image 57:**  
crack in spoiler

**Note for Image 66:**  
surface rust at right side of trunk

**Note for Image 70:**  
LF wheel

**Note for Image 71:**  
LF tire size

**Note for Image 72:**  
LF tread

**Note for Image 73:**  
LF wheel corrosion

**Note for Image 74:**  
LF wheel corrosion



**Note for Image 75:**

LF tire dry rot

**Note for Image 76:**

LR wheel

**Note for Image 77:**

LR tire size

**Note for Image 78:**

LR tread

**Note for Image 79:**

LR wheel corrosion

**Note for Image 80:**

LR wheel corrosion

**Note for Image 81:**

LR tire dry rot

**Note for Image 82:**

RR wheel

**Note for Image 83:**

RR tire size

**Note for Image 84:**

RR tread

**Note for Image 85:**

RR wheel corrosion

**Note for Image 86:**

RR wheel corrosion

**Note for Image 87:**

RR tire dry rot

**Note for Image 88:**

RF wheel

**Note for Image 89:**

RF tire size

**Note for Image 90:**

RF tread



**Note for Image 91:**

RF wheel corrosion

**Note for Image 92:**

RF wheel corrosion

**Note for Image 93:**

RF tire dry rot

**Note for Image 94:**

underside front

**Note for Image 95:**

underside rear

**Note for Image 96:**

rear suspension left

**Note for Image 97:**

rear suspension right

**Note for Image 98:**

passenger side rear floor pan

**Note for Image 99:**

passenger side front floor pan

**Note for Image 100:**

driver side rear floor pan

**Note for Image 101:**

driver side front floor pan

**Note for Image 102:**

front suspension left

**Note for Image 103:**

front suspension right

**Note for Image 104:**

engine oil pan

**Note for Image 105:**

transmission underside

**Note for Image 113:**

coolant reservoir

**Note for Image 115:**

oil residue at timing cover

**Note for Image 120:**

oil residue at right valve cover

**Note for Image 121:**

oil residue at right valve cover

**Note for Image 122:**

engine oil dipstick

**Note for Image 124:**

build tag

**Note for Image 125:**

engine compartment tag

**Note for Image 129:**

trunk left side

**Note for Image 130:**

trunk left side

**Note for Image 131:**

left quarter trunk view

**Note for Image 132:**

left quarter trunk view

**Note for Image 133:**

right quarter trunk view

**Note for Image 134:**

right quarter trunk view

**Note for Image 135:**

trunk floor pan left side

**Note for Image 136:**

trunk floor pan left side

**Note for Image 137:**

trunk floor pan right side

**Note for Image 143:**

paint thickness measurement at left side of hood



**Note for Image 144:**

paint thickness measurement at left fender

**Note for Image 145:**

paint thickness measurement at left fender

**Note for Image 146:**

paint thickness measurement at left door

**Note for Image 147:**

paint thickness measurement at left door

**Note for Image 148:**

paint thickness measurement at left quarter

**Note for Image 149:**

paint thickness measurement at left quarter

**Note for Image 150:**

paint thickness measurement at left quarter

**Note for Image 151:**

paint thickness measurement at left side of trunk

**Note for Image 152:**

paint thickness measurement at right side of trunk

**Note for Image 153:**

paint thickness measurement at right quarter

**Note for Image 154:**

paint thickness measurement at right quarter

**Note for Image 155:**

paint thickness measurement at right quarter

**Note for Image 156:**

paint thickness measurement at right door

**Note for Image 157:**

paint thickness measurement at right door

**Note for Image 158:**

paint thickness measurement at right fender

**Note for Image 159:**

paint thickness measurement at right fender

**Note for Image 160:**

paint thickness measurement at right side of hood

**Note for Image 161:**

dash vin

**Note for Image 162:**

inspection and registration

**Note for Image 163:**

left quarter glass and door seal condition

**Note for Image 164:**

left door trim

**Note for Image 165:**

left door trim

**Note for Image 166:**

left door

**Note for Image 167:**

door vin tag

**Note for Image 171:**

rust at left rocker

**Note for Image 172:**

rust at left rocker

**Note for Image 175:**

driver side front seat cushion

**Note for Image 177:**

driver side front seat back

**Note for Image 179:**

left front mat and carpet

**Note for Image 180:**

left front mat and carpet

**Note for Image 181:**

left front seat back

**Note for Image 186:**

right door trim



**Note for Image 187:**

right door trim

**Note for Image 188:**

right door trim

**Note for Image 191:**

dash clock

**Note for Image 193:**

right front seat cushion

**Note for Image 195:**

right front mat and carpet

**Note for Image 196:**

right front mat and carpet

**Note for Image 200:**

right rear mat and carpet

**Note for Image 201:**

right rear mat and carpet

**Note for Image 202:**

left rear mat and carpet

**Note for Image 203:**

left rear mat and carpet

**Note for Image 219:**

cracks in dashboard

**Note for Image 227:**

odometer before test drive

**Note for Image 228:**

odometer after test drive