

## Standard Glands with Thread, Polyamide

### Polyamide cable glands with lamellar clamping

- For standard industrial applications.
- Easy assembly.
- High quality strain relief and sealing, reliable performance for standard industrial applications.
- Up-to-date international approvals.



## Standard Cable Glands with Thread, Brass

### Brass cable glands with lamellar clamping

- For standard industrial applications in harsh environments.
- Easy assembly.
- High quality strain relief and sealing, reliable performance for standard industrial applications.
- Up-to-date international approvals.



## Corrosion Proof Cable Gland for SWA and AWA Cables

### Cable Gland with Hybrid Structure (Brass and Polyamide)

- No need for a shroud against the corrosive environment.
- Inspectionability of armor clamping.
- Halogen-free materials.
- Armour earth continuity thanks to metal armor ring and body.
- High-quality strain relief and reliable sealing performance for standard industrial applications.



## EMC Servo Ampacity Cable Glands EcoBrass

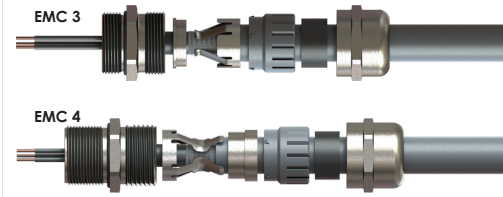
### EMC cable glands with high current proof, open moving spring contact

- For metal machines and housings.
- Vibration proof EMC performance.
- For high current proof applications.
- Specially designed EMC protective cable glands.
- Long-lasting contact by high definition contact spring.
- Moving spring contact offers reduced risk of sheath damage.
- Easy movement of cable as long as not fastened.
- Easy assembly: install cable gland - prepare cable sheath - insert cable - tighten cap.
- Easy assembly and disassembly of cable. Spring closes and opens according to fastening of the cap.
- High quality strain relief and sealing, reliable performance for EMC applications.
- Up-to-date international approvals.



## EMC Cable Glands, Brass

- Specially designed EMC, protective cable glands.
- Long-lasting contact by high definition contact spring.
- Moving spring contact offers reduced risk of sheath damage.
- Easy assembly: install cable gland - prepare cable sheath - insert cable - tighten cap.
- High quality strain relief and sealing, reliable performance for EMC applications.
- Up-to-date international approvals.



## Armoured Cable Glands

### Cable glands for armoured cables

- Specially designed cable glands for armoured cables. Large temperature range applications.
- Easy assembly: install cable gland - prepare steel wires - insert cable - tighten cap.
- High quality strain relief and sealing, reliable performance for standard industrial applications.



## ADAPTORS

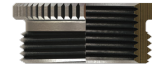
### Adaptors for different threads

- For metal machines and housings.
- Adaptors for the transition of different thread types and sizes.



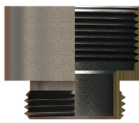
### Reducers for different thread sizes

- For metal machines and housings.
- Reducers for the transition of different thread types and sizes.



### Enlargers for different thread sizes

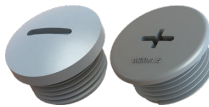
- For metal machines and housings.
- Enlargers for the transition of different thread types and sizes.



## PLASTIC PLUGS

### Plugs, round

- For standard industrial applications.
- Sealing of housing hole when no cable gland is used.
- Slot-head version.
- Phillips-head version.



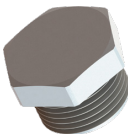
### Polyamide plugs, front-side assembly, without thread

- For standard industrial applications.
- Snap-in assembly for non-threaded holes.
- Lock nuts have threads acc. to EN 60423 (metric) and acc. to DIN 40430 (PG).
- Replacing the modular plug: lock nut can be used for fixing the cable gland.



### Plugs, hexagonal

- For standard industrial applications.
- Sealing of housing hole when no cable gland is used.
- To fasten with spanner.



## SERRATED WASHERS

- To fix lock nuts when mechanical stress occurs.

### Technical Details

**Material** | Brass Nickel plated, Stainless Steel



## GASKETS

- To ensure IP rating for rough surfaces or through holes.

### Technical Details

#### Material

- CR (Chloroprene)
- NBR
- Silicone
- Polyamide 6
- Fibre



## EARTH TAGS

### Technical Details

**Material** | Brass, Brass Nickel Plated, Stainless Steel



## LOCK NUTS, POLYAMIDE With and Without Flange

### Technical Details

**Material** | PA 6 GF 30 (Polyamide 6, 30% Glass Fiber Reinforced)



## LOCK NUTS, METAL

### Technical Details

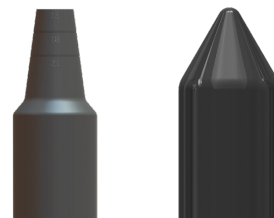
**Material** | Brass Nickel plated, Stainless Steel



## SHROUDS

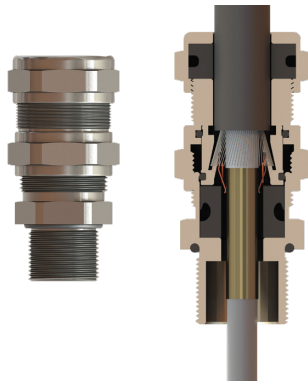
### Technical Details

Material	Orlon Type		E-Octans and E-Vela Type
	Type 1	Type 2	
CR (Chloroprene), EPDM		PVC	PVC



## Orion and Orion Lead Sheathed

Technical Details											
<b>Body, Cap</b>	Brass, Brass Nickel Plated, Stainless Steel, Aluminium										
<b>Material</b>	<table border="1"> <tr> <td><b>Inner Part</b></td> <td>Brass, Brass Nickel Plated, Stainless Steel, Aluminium</td> </tr> <tr> <td><b>Seal</b></td> <td>CR (Chloroprene), Silicone</td> </tr> <tr> <td><b>O-ring</b></td> <td>CR (Chloroprene), Silicone</td> </tr> </table>	<b>Inner Part</b>	Brass, Brass Nickel Plated, Stainless Steel, Aluminium	<b>Seal</b>	CR (Chloroprene), Silicone	<b>O-ring</b>	CR (Chloroprene), Silicone				
<b>Inner Part</b>	Brass, Brass Nickel Plated, Stainless Steel, Aluminium										
<b>Seal</b>	CR (Chloroprene), Silicone										
<b>O-ring</b>	CR (Chloroprene), Silicone										
<b>Ingress Protection Rating</b>	IP 68 - 5 Bar, 30 min IP 66										
<b>Operating Temperature</b>	<table border="1"> <tr> <td><b>Seal Material</b></td> <td></td> </tr> <tr> <td><b>CR (Chloroprene)</b></td> <td>Silicone</td> </tr> <tr> <td><b>Standard</b></td> <td>-40°C to +100°C</td> </tr> <tr> <td><b>LT Type</b></td> <td>-40°C to +80°C</td> </tr> <tr> <td><b>Equipment For</b></td> <td>Gas &amp; Dust potentially explosive atmospheres</td> </tr> </table>	<b>Seal Material</b>		<b>CR (Chloroprene)</b>	Silicone	<b>Standard</b>	-40°C to +100°C	<b>LT Type</b>	-40°C to +80°C	<b>Equipment For</b>	Gas & Dust potentially explosive atmospheres
<b>Seal Material</b>											
<b>CR (Chloroprene)</b>	Silicone										
<b>Standard</b>	-40°C to +100°C										
<b>LT Type</b>	-40°C to +80°C										
<b>Equipment For</b>	Gas & Dust potentially explosive atmospheres										
<b>Suitable for use in</b>	Group II Gas Group IIC ZONE1/ZONE2 Group III Dust Group IIIC ZONE21/ZONE 22										
<b>Equipment Marking</b>	Ex II 2GD Ex db IIC Gb Ex eb IIC Gb Ex Ib IIC Db										
<b>Marking Example *</b>	BMD KBA... CE 0722 Ex II 2GD Ex db IIC Gb Ex eb IIC Gb Ex Ib IIC Db Tq -60°C to +130°C IP66/68 CESI 13 ATEX 033X IECEx CES 13.0013X <ul style="list-style-type: none"> <li>Metric (M) ISO Pitch 1.5</li> <li>NPT (N) ANSI ASME B1.20.1</li> <li>Other thread types also available upon request.</li> </ul>										
<b>Thread Type</b>											
<b>Cable Type</b>	SWA - AWA										



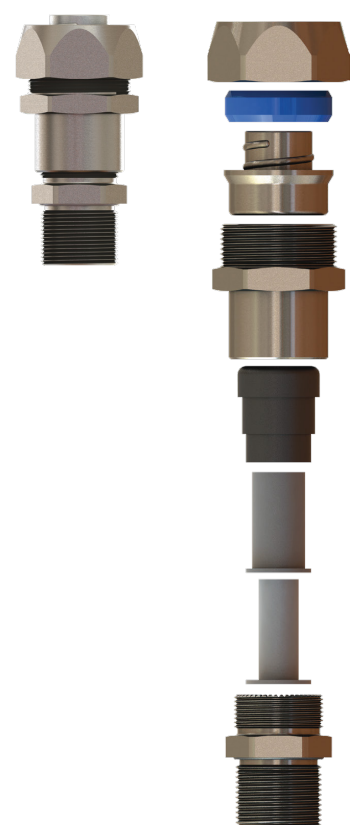
## E-Octans

Technical Details											
<b>Body, Cap</b>	Brass, Brass Nickel Plated, Stainless Steel 316L, Aluminium										
<b>Material</b>	<table border="1"> <tr> <td><b>Seal</b></td> <td>CR (Chloroprene), Silicone</td> </tr> <tr> <td><b>O-ring</b></td> <td>CR (Chloroprene), Silicone</td> </tr> </table>	<b>Seal</b>	CR (Chloroprene), Silicone	<b>O-ring</b>	CR (Chloroprene), Silicone						
<b>Seal</b>	CR (Chloroprene), Silicone										
<b>O-ring</b>	CR (Chloroprene), Silicone										
<b>Ingress Protection Rating</b>	IP 68 - 5 Bar, 30 min IP 66										
<b>Operating Temperature</b>	<table border="1"> <tr> <td><b>Seal Material</b></td> <td></td> </tr> <tr> <td><b>CR (Chloroprene)</b></td> <td>Silicone</td> </tr> <tr> <td><b>Ex d/tb</b></td> <td>-40°C to +80°C</td> </tr> <tr> <td><b>Ex e/tb</b></td> <td>-40°C to +80°C</td> </tr> <tr> <td><b>Equipment For</b></td> <td>Gas &amp; Dust potentially explosive atmospheres</td> </tr> </table>	<b>Seal Material</b>		<b>CR (Chloroprene)</b>	Silicone	<b>Ex d/tb</b>	-40°C to +80°C	<b>Ex e/tb</b>	-40°C to +80°C	<b>Equipment For</b>	Gas & Dust potentially explosive atmospheres
<b>Seal Material</b>											
<b>CR (Chloroprene)</b>	Silicone										
<b>Ex d/tb</b>	-40°C to +80°C										
<b>Ex e/tb</b>	-40°C to +80°C										
<b>Equipment For</b>	Gas & Dust potentially explosive atmospheres										
<b>Suitable for use in</b>	Group II Gas Group IIC ZONE1/ZONE2 Group III Dust Group IIIC ZONE21/ZONE 22										
<b>Equipment Marking</b>	Ex II 2GD Ex db IIC Gb Ex eb IIC Gb Ex Ib IIC Db										
<b>Marking Example *</b>	BMD EBU... CE 0722 Ex II 2GD Ex db IIC Gb Ex eb IIC Gb Ex Ib IIC Db Tq -40°C to +80°C IP66/68 IECEx CES 13.0006X CESI 13 ATEX 018X <ul style="list-style-type: none"> <li>Metric (M) ISO Pitch 1.5</li> <li>NPT (N) ANSI ASME B1.20.1</li> <li>Other thread types also available upon request.</li> </ul>										
<b>Thread Type</b>											
<b>Cable Type</b>	Non Armoured										



## E-Hydrus

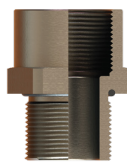
Technical Details											
<b>Body, Cap</b>	Brass, Brass Nickel Plated, Stainless Steel 316L										
<b>Material</b>	<table border="1"> <tr> <td><b>Seal</b></td> <td>CR (Chloroprene), Silicone</td> </tr> <tr> <td><b>Ferrule</b></td> <td>Steel Zinc Plated, Brass Nickel Plated</td> </tr> <tr> <td><b>Plastic Ring</b></td> <td>Polyamide</td> </tr> <tr> <td><b>O-ring</b></td> <td>CR (Chloroprene), Silicone</td> </tr> </table>	<b>Seal</b>	CR (Chloroprene), Silicone	<b>Ferrule</b>	Steel Zinc Plated, Brass Nickel Plated	<b>Plastic Ring</b>	Polyamide	<b>O-ring</b>	CR (Chloroprene), Silicone		
<b>Seal</b>	CR (Chloroprene), Silicone										
<b>Ferrule</b>	Steel Zinc Plated, Brass Nickel Plated										
<b>Plastic Ring</b>	Polyamide										
<b>O-ring</b>	CR (Chloroprene), Silicone										
<b>Ingress Protection Rating</b>	IP 68 - 5 Bar, 30 min IP 66										
<b>Operating Temperature</b>	<table border="1"> <tr> <td><b>Seal Material</b></td> <td></td> </tr> <tr> <td><b>CR (Chloroprene)</b></td> <td>Silicone</td> </tr> <tr> <td><b>Ex d/tb</b></td> <td>-40°C to +80°C</td> </tr> <tr> <td><b>Ex e/tb</b></td> <td>-40°C to +80°C</td> </tr> <tr> <td><b>Equipment For</b></td> <td>Gas &amp; Dust potentially explosive atmospheres</td> </tr> </table>	<b>Seal Material</b>		<b>CR (Chloroprene)</b>	Silicone	<b>Ex d/tb</b>	-40°C to +80°C	<b>Ex e/tb</b>	-40°C to +80°C	<b>Equipment For</b>	Gas & Dust potentially explosive atmospheres
<b>Seal Material</b>											
<b>CR (Chloroprene)</b>	Silicone										
<b>Ex d/tb</b>	-40°C to +80°C										
<b>Ex e/tb</b>	-40°C to +80°C										
<b>Equipment For</b>	Gas & Dust potentially explosive atmospheres										
<b>Suitable for use in</b>	Group II Gas Group IIC ZONE1/ZONE2 Group III Dust Group IIIC ZONE21/ZONE 22										
<b>Equipment Marking</b>	Ex II 2GD Ex db IIC Gb Ex eb IIC Gb Ex Ib IIC Db										
<b>Marking Example *</b>	BMD EBL... CE 0722 Ex II 2GD Ex db IIC Gb Ex eb IIC Gb Ex Ib IIC Db Tq -40°C to +80°C IP66/68 CESI 13 ATEX 018X IECEx CES 13.0008X <ul style="list-style-type: none"> <li>Metric (M) ISO Pitch 1.5</li> <li>NPT (N) ANSI ASME B1.20.1</li> <li>Other thread types also available upon request.</li> </ul>										
<b>Thread Type</b>											
<b>Cable Type</b>	Non Armoured										



## ADAPTORS & PLUGS

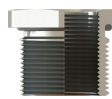
### Enlargers for Ex d/e Applications

Technical Details															
<b>Body</b>	Brass, Brass Nickel Plated, Stainless Steel 316L														
<b>Material</b>	<table border="1"> <tr> <td><b>O-ring</b></td> <td>CR (Chloroprene), Silicone</td> </tr> <tr> <td><b>Ingress Protection Rating</b></td> <td>IP 68 - 5 Bar, 30 min IP 66</td> </tr> <tr> <td><b>Operating Temperature</b></td> <td> <table border="1"> <tr> <td><b>O-ring Material</b></td> <td></td> </tr> <tr> <td><b>CR (Chloroprene)</b></td> <td>Silicone</td> </tr> <tr> <td><b>Ex d/e/tb</b></td> <td>-40°C to +100°C</td> </tr> <tr> <td><b>Equipment For</b></td> <td>Gas &amp; Dust potentially explosive atmospheres.</td> </tr> </table> </td> </tr> </table>	<b>O-ring</b>	CR (Chloroprene), Silicone	<b>Ingress Protection Rating</b>	IP 68 - 5 Bar, 30 min IP 66	<b>Operating Temperature</b>	<table border="1"> <tr> <td><b>O-ring Material</b></td> <td></td> </tr> <tr> <td><b>CR (Chloroprene)</b></td> <td>Silicone</td> </tr> <tr> <td><b>Ex d/e/tb</b></td> <td>-40°C to +100°C</td> </tr> <tr> <td><b>Equipment For</b></td> <td>Gas &amp; Dust potentially explosive atmospheres.</td> </tr> </table>	<b>O-ring Material</b>		<b>CR (Chloroprene)</b>	Silicone	<b>Ex d/e/tb</b>	-40°C to +100°C	<b>Equipment For</b>	Gas & Dust potentially explosive atmospheres.
<b>O-ring</b>	CR (Chloroprene), Silicone														
<b>Ingress Protection Rating</b>	IP 68 - 5 Bar, 30 min IP 66														
<b>Operating Temperature</b>	<table border="1"> <tr> <td><b>O-ring Material</b></td> <td></td> </tr> <tr> <td><b>CR (Chloroprene)</b></td> <td>Silicone</td> </tr> <tr> <td><b>Ex d/e/tb</b></td> <td>-40°C to +100°C</td> </tr> <tr> <td><b>Equipment For</b></td> <td>Gas &amp; Dust potentially explosive atmospheres.</td> </tr> </table>	<b>O-ring Material</b>		<b>CR (Chloroprene)</b>	Silicone	<b>Ex d/e/tb</b>	-40°C to +100°C	<b>Equipment For</b>	Gas & Dust potentially explosive atmospheres.						
<b>O-ring Material</b>															
<b>CR (Chloroprene)</b>	Silicone														
<b>Ex d/e/tb</b>	-40°C to +100°C														
<b>Equipment For</b>	Gas & Dust potentially explosive atmospheres.														



### Reducers for Ex d/e Applications

Technical Details															
<b>Body</b>	Brass, Brass Nickel Plated, Stainless Steel 316L														
<b>Material</b>	<table border="1"> <tr> <td><b>O-ring</b></td> <td>CR (Chloroprene), Silicone</td> </tr> <tr> <td><b>Ingress Protection Rating</b></td> <td>IP 68 - 5 Bar, 30 min IP 66</td> </tr> <tr> <td><b>Operating Temperature</b></td> <td> <table border="1"> <tr> <td><b>O-ring Material</b></td> <td></td> </tr> <tr> <td><b>CR (Chloroprene)</b></td> <td>Silicone</td> </tr> <tr> <td><b>Ex d/e/tb</b></td> <td>-40°C to +100°C</td> </tr> <tr> <td><b>Equipment For</b></td> <td>Gas &amp; Dust potentially explosive atmospheres.</td> </tr> </table> </td> </tr> </table>	<b>O-ring</b>	CR (Chloroprene), Silicone	<b>Ingress Protection Rating</b>	IP 68 - 5 Bar, 30 min IP 66	<b>Operating Temperature</b>	<table border="1"> <tr> <td><b>O-ring Material</b></td> <td></td> </tr> <tr> <td><b>CR (Chloroprene)</b></td> <td>Silicone</td> </tr> <tr> <td><b>Ex d/e/tb</b></td> <td>-40°C to +100°C</td> </tr> <tr> <td><b>Equipment For</b></td> <td>Gas &amp; Dust potentially explosive atmospheres.</td> </tr> </table>	<b>O-ring Material</b>		<b>CR (Chloroprene)</b>	Silicone	<b>Ex d/e/tb</b>	-40°C to +100°C	<b>Equipment For</b>	Gas & Dust potentially explosive atmospheres.
<b>O-ring</b>	CR (Chloroprene), Silicone														
<b>Ingress Protection Rating</b>	IP 68 - 5 Bar, 30 min IP 66														
<b>Operating Temperature</b>	<table border="1"> <tr> <td><b>O-ring Material</b></td> <td></td> </tr> <tr> <td><b>CR (Chloroprene)</b></td> <td>Silicone</td> </tr> <tr> <td><b>Ex d/e/tb</b></td> <td>-40°C to +100°C</td> </tr> <tr> <td><b>Equipment For</b></td> <td>Gas &amp; Dust potentially explosive atmospheres.</td> </tr> </table>	<b>O-ring Material</b>		<b>CR (Chloroprene)</b>	Silicone	<b>Ex d/e/tb</b>	-40°C to +100°C	<b>Equipment For</b>	Gas & Dust potentially explosive atmospheres.						
<b>O-ring Material</b>															
<b>CR (Chloroprene)</b>	Silicone														
<b>Ex d/e/tb</b>	-40°C to +100°C														
<b>Equipment For</b>	Gas & Dust potentially explosive atmospheres.														



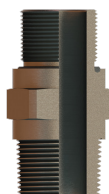
### Couplers for Ex d/e Applications

Technical Details															
<b>Body</b>	Brass, Brass Nickel Plated, Stainless Steel 316L														
<b>Material</b>	<table border="1"> <tr> <td><b>O-ring</b></td> <td>CR (Chloroprene), Silicone</td> </tr> <tr> <td><b>Ingress Protection Rating</b></td> <td>IP 68 - 5 Bar, 30 min IP 66</td> </tr> <tr> <td><b>Operating Temperature</b></td> <td> <table border="1"> <tr> <td><b>Seal Material</b></td> <td></td> </tr> <tr> <td><b>CR (Chloroprene)</b></td> <td>Silicone</td> </tr> <tr> <td><b>Ex d/e/tb</b></td> <td>-40°C to +130°C</td> </tr> <tr> <td><b>Equipment For</b></td> <td>Gas &amp; Dust potentially explosive atmospheres.</td> </tr> </table> </td> </tr> </table>	<b>O-ring</b>	CR (Chloroprene), Silicone	<b>Ingress Protection Rating</b>	IP 68 - 5 Bar, 30 min IP 66	<b>Operating Temperature</b>	<table border="1"> <tr> <td><b>Seal Material</b></td> <td></td> </tr> <tr> <td><b>CR (Chloroprene)</b></td> <td>Silicone</td> </tr> <tr> <td><b>Ex d/e/tb</b></td> <td>-40°C to +130°C</td> </tr> <tr> <td><b>Equipment For</b></td> <td>Gas &amp; Dust potentially explosive atmospheres.</td> </tr> </table>	<b>Seal Material</b>		<b>CR (Chloroprene)</b>	Silicone	<b>Ex d/e/tb</b>	-40°C to +130°C	<b>Equipment For</b>	Gas & Dust potentially explosive atmospheres.
<b>O-ring</b>	CR (Chloroprene), Silicone														
<b>Ingress Protection Rating</b>	IP 68 - 5 Bar, 30 min IP 66														
<b>Operating Temperature</b>	<table border="1"> <tr> <td><b>Seal Material</b></td> <td></td> </tr> <tr> <td><b>CR (Chloroprene)</b></td> <td>Silicone</td> </tr> <tr> <td><b>Ex d/e/tb</b></td> <td>-40°C to +130°C</td> </tr> <tr> <td><b>Equipment For</b></td> <td>Gas &amp; Dust potentially explosive atmospheres.</td> </tr> </table>	<b>Seal Material</b>		<b>CR (Chloroprene)</b>	Silicone	<b>Ex d/e/tb</b>	-40°C to +130°C	<b>Equipment For</b>	Gas & Dust potentially explosive atmospheres.						
<b>Seal Material</b>															
<b>CR (Chloroprene)</b>	Silicone														
<b>Ex d/e/tb</b>	-40°C to +130°C														
<b>Equipment For</b>	Gas & Dust potentially explosive atmospheres.														



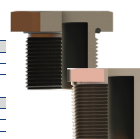
### Nipples for Ex d/e Applications

Technical Details															
<b>Body</b>	Brass, Brass Nickel Plated, Stainless Steel 316L														
<b>Material</b>	<table border="1"> <tr> <td><b>O-ring</b></td> <td>CR (Chloroprene), Silicone</td> </tr> <tr> <td><b>Ingress Protection Rating</b></td> <td>IP 68 - 5 Bar, 30 min IP 66</td> </tr> <tr> <td><b>Operating Temperature</b></td> <td> <table border="1"> <tr> <td><b>O-ring Material</b></td> <td></td> </tr> <tr> <td><b>CR (Chloroprene)</b></td> <td>Silicone</td> </tr> <tr> <td><b>Ex d/e/tb</b></td> <td>-40°C to +100°C</td> </tr> <tr> <td><b>Equipment For</b></td> <td>Gas &amp; Dust potentially explosive atmospheres.</td> </tr> </table> </td> </tr> </table>	<b>O-ring</b>	CR (Chloroprene), Silicone	<b>Ingress Protection Rating</b>	IP 68 - 5 Bar, 30 min IP 66	<b>Operating Temperature</b>	<table border="1"> <tr> <td><b>O-ring Material</b></td> <td></td> </tr> <tr> <td><b>CR (Chloroprene)</b></td> <td>Silicone</td> </tr> <tr> <td><b>Ex d/e/tb</b></td> <td>-40°C to +100°C</td> </tr> <tr> <td><b>Equipment For</b></td> <td>Gas &amp; Dust potentially explosive atmospheres.</td> </tr> </table>	<b>O-ring Material</b>		<b>CR (Chloroprene)</b>	Silicone	<b>Ex d/e/tb</b>	-40°C to +100°C	<b>Equipment For</b>	Gas & Dust potentially explosive atmospheres.
<b>O-ring</b>	CR (Chloroprene), Silicone														
<b>Ingress Protection Rating</b>	IP 68 - 5 Bar, 30 min IP 66														
<b>Operating Temperature</b>	<table border="1"> <tr> <td><b>O-ring Material</b></td> <td></td> </tr> <tr> <td><b>CR (Chloroprene)</b></td> <td>Silicone</td> </tr> <tr> <td><b>Ex d/e/tb</b></td> <td>-40°C to +100°C</td> </tr> <tr> <td><b>Equipment For</b></td> <td>Gas &amp; Dust potentially explosive atmospheres.</td> </tr> </table>	<b>O-ring Material</b>		<b>CR (Chloroprene)</b>	Silicone	<b>Ex d/e/tb</b>	-40°C to +100°C	<b>Equipment For</b>	Gas & Dust potentially explosive atmospheres.						
<b>O-ring Material</b>															
<b>CR (Chloroprene)</b>	Silicone														
<b>Ex d/e/tb</b>	-40°C to +100°C														
<b>Equipment For</b>	Gas & Dust potentially explosive atmospheres.														



### Hexagonal Plugs for Ex d/e Applications

Technical Details															
<b>Body</b>	Brass, Brass Nickel Plated, Stainless Steel 316L														
<b>Material</b>	<table border="1"> <tr> <td><b>O-ring</b></td> <td>CR (Chloroprene), Silicone</td> </tr> <tr> <td><b>Ingress Protection Rating</b></td> <td>IP 68 - 5 Bar, 30 min IP 66</td> </tr> <tr> <td><b>Operating Temperature</b></td> <td> <table border="1"> <tr> <td><b>O-ring Material</b></td> <td></td> </tr> <tr> <td><b>CR (Chloroprene)</b></td> <td>Silicone</td> </tr> <tr> <td><b>Ex d/e/tb</b></td> <td>-40°C to +100°C</td> </tr> <tr> <td><b>Equipment For</b></td> <td>Gas &amp; Dust potentially explosive atmospheres.</td> </tr> </table> </td> </tr> </table>	<b>O-ring</b>	CR (Chloroprene), Silicone	<b>Ingress Protection Rating</b>	IP 68 - 5 Bar, 30 min IP 66	<b>Operating Temperature</b>	<table border="1"> <tr> <td><b>O-ring Material</b></td> <td></td> </tr> <tr> <td><b>CR (Chloroprene)</b></td> <td>Silicone</td> </tr> <tr> <td><b>Ex d/e/tb</b></td> <td>-40°C to +100°C</td> </tr> <tr> <td><b>Equipment For</b></td> <td>Gas &amp; Dust potentially explosive atmospheres.</td> </tr> </table>	<b>O-ring Material</b>		<b>CR (Chloroprene)</b>	Silicone	<b>Ex d/e/tb</b>	-40°C to +100°C	<b>Equipment For</b>	Gas & Dust potentially explosive atmospheres.
<b>O-ring</b>	CR (Chloroprene), Silicone														
<b>Ingress Protection Rating</b>	IP 68 - 5 Bar, 30 min IP 66														
<b>Operating Temperature</b>	<table border="1"> <tr> <td><b>O-ring Material</b></td> <td></td> </tr> <tr> <td><b>CR (Chloroprene)</b></td> <td>Silicone</td> </tr> <tr> <td><b>Ex d/e/tb</b></td> <td>-40°C to +100°C</td> </tr> <tr> <td><b>Equipment For</b></td> <td>Gas &amp; Dust potentially explosive atmospheres.</td> </tr> </table>	<b>O-ring Material</b>		<b>CR (Chloroprene)</b>	Silicone	<b>Ex d/e/tb</b>	-40°C to +100°C	<b>Equipment For</b>	Gas & Dust potentially explosive atmospheres.						
<b>O-ring Material</b>															
<b>CR (Chloroprene)</b>	Silicone														
<b>Ex d/e/tb</b>	-40°C to +100°C														
<b>Equipment For</b>	Gas & Dust potentially explosive atmospheres.														



### Round Plugs for Ex d/e Applications

Technical Details															
<b>Body</b>	Brass, Brass Nickel Plated, Stainless Steel 316L														
<b>Material</b>	<table border="1"> <tr> <td><b>O-ring</b></td> <td>CR (Chloroprene), Silicone</td> </tr> <tr> <td><b>Ingress Protection Rating</b></td> <td>IP 68 - 5 Bar, 30 min IP 66</td> </tr> <tr> <td><b>Operating Temperature</b></td> <td> <table border="1"> <tr> <td><b>O-ring Material</b></td> <td></td> </tr> <tr> <td><b>CR (Chloroprene)</b></td> <td>Silicone</td> </tr> <tr> <td><b>Ex d/e/tb</b></td> <td>-40°C to +100°C</td> </tr> <tr> <td><b>Equipment For</b></td> <td>Gas &amp; Dust potentially explosive atmospheres.</td> </tr> </table> </td> </tr> </table>	<b>O-ring</b>	CR (Chloroprene), Silicone	<b>Ingress Protection Rating</b>	IP 68 - 5 Bar, 30 min IP 66	<b>Operating Temperature</b>	<table border="1"> <tr> <td><b>O-ring Material</b></td> <td></td> </tr> <tr> <td><b>CR (Chloroprene)</b></td> <td>Silicone</td> </tr> <tr> <td><b>Ex d/e/tb</b></td> <td>-40°C to +100°C</td> </tr> <tr> <td><b>Equipment For</b></td> <td>Gas &amp; Dust potentially explosive atmospheres.</td> </tr> </table>	<b>O-ring Material</b>		<b>CR (Chloroprene)</b>	Silicone	<b>Ex d/e/tb</b>	-40°C to +100°C	<b>Equipment For</b>	Gas & Dust potentially explosive atmospheres.
<b>O-ring</b>	CR (Chloroprene), Silicone														
<b>Ingress Protection Rating</b>	IP 68 - 5 Bar, 30 min IP 66														
<b>Operating Temperature</b>	<table border="1"> <tr> <td><b>O-ring Material</b></td> <td></td> </tr> <tr> <td><b>CR (Chloroprene)</b></td> <td>Silicone</td> </tr> <tr> <td><b>Ex d/e/tb</b></td> <td>-40°C to +100°C</td> </tr> <tr> <td><b>Equipment For</b></td> <td>Gas &amp; Dust potentially explosive atmospheres.</td> </tr> </table>	<b>O-ring Material</b>		<b>CR (Chloroprene)</b>	Silicone	<b>Ex d/e/tb</b>	-40°C to +100°C	<b>Equipment For</b>	Gas & Dust potentially explosive atmospheres.						
<b>O-ring Material</b>															
<b>CR (Chloroprene)</b>	Silicone														
<b>Ex d/e/tb</b>	-40°C to +100°C														
<b>Equipment For</b>	Gas & Dust potentially explosive atmospheres.														

