

# LA PHIL

OUR CITY

OUR SOUND

2017—2018  
SEASON

WALT DISNEY  
CONCERT HALL

SUBSCRIBE  
TODAY



# CONTENTS

WELCOME	3
SEASON TICKET OPTIONS	4
THE SEASON IN FOCUS	6-8
MULTIDISCIPLINARY PRODUCTIONS	9
COLLABORATORS & VISIONARIES	10-11
SERIES AT A GLANCE	13
SEASON CALENDAR	14-37
THE NEXT GENERATION	38
SUPPORT THE LA PHIL	39

ON THE COVER:  
GUSTAVO DUDAMEL + DTLA SKYLINE



## OUR CITY OUR SOUND

Like the city we call home, the LA Phil is constantly evolving, moving and adapting. Expanding the limits of virtuosity. Breaking the barriers of convention. And unifying us through the power of music.

2017/18 – our 99th season – features a vivid array of music from a diverse group of musicians; a stirring mix of adventurous projects that invigorate our minds and traditional favorites that warm our collective hearts.

Join us at Walt Disney Concert Hall as we begin our countdown to 100!

LA PHIL. OUR CITY, OUR SOUND.

# SEASON TICKET OPTIONS

## SUBSCRIBE TO A SERIES

Ranging from 3-8 concerts, each package includes a unique mix of programs and artists. Subscribers receive a variety of premium benefits.

### Best Value

- Guaranteed lowest price for the best seats
- All subscriptions in Terrace, Terrace East/West, and Balcony discounted 20%
- Savings on select concerts and at the LA Phil Store
- One low order fee

### VIP Access

- Best seats reserved for subscribers
- Subscriber-only events with the musicians
- Priority access to tickets
- Order *any* additional concerts now

### Premium Handling

- First opportunity for seat upgrades
- Free and easy ticket exchange

## CREATE YOUR OWN SEASON (CYO)

Choose five or more concerts: any genre, day or section.

### Flexibility and Savings

- Choose any concerts, according to your taste, schedule and budget
- Secure seats before the general public
- Save compared to single ticket prices
- One low order fee
- Easily exchange tickets (a small fee applies)

Secure Your Seats Today  
LAPhil.com | 323.850.2000

JOHN LOFTON + BUNKER HILL



SEASON TICKET OPTIONS

SEASON TICKET OPTIONS



# POINTS OF INTEREST

## THE SEASON IN FOCUS



ELISE SHOPE HENRY + PALISADES PARK

THE SEASON IN FOCUS

## Mozart 1791

### Dudamel Conducts Music from Mozart's Final Year

In what would be the last year of his life, Mozart composed extraordinary music, including his final piano concerto and *The Magic Flute*. Did he realize that his life was about to end? In a remarkable journey through time, Gustavo Dudamel will explore music composed by the 35-year-old Mozart, who remains as relevant as ever, selling more CDs than the biggest names in pop music. Gustavo and the Los Angeles Philharmonic launch the season with a festive all-Mozart Gala, followed by two weekends of music from that fateful, fruitful year, 1791.

SEP 29-OCT 1  
OCT 3  
OCT 5-8

Series: TH2, FRM, FRC2, SA1,  
SA2, SU1, SU2, CH1



## CDMX

### Music from Mexico City

Ciudad de México (CDMX), a city of nearly nine million people, has one of the most vibrant contemporary music communities in the world, drawing on rich musical traditions going back centuries. In October, the LA Phil will offer a window into Mexico City's colorful music scene with a mix of events on and off subscription, including orchestral concerts with **Gustavo Dudamel**, and artists such as **Antonio Sanchez**, **Natalia Lafourcade**, **Mexrrissey** and **Café Tacvba**.

OCT 9-17 Series: GUI, JZ1, WM1  
plus Additional Concerts



Presenting Sponsors  
The Getty  
Bank of America



"The story of Los Angeles and Mexico is one and the same. It has never been more important to remember the history we share and the music we make."

*Gustavo Dudamel*

THE SEASON IN FOCUS

## Schumann Cycle

### Dudamel Conducts Symphonies, Concertos and More

A signature element of Dudamel's tenure has been to present the complete symphony cycles of the greatest Romantic composers, immersing audiences in their unique artistic voices. On the heels of insightful surveys of Mahler, Tchaikovsky, Beethoven, and Schubert comes an exploration of Robert Schumann, whose music is so pure, so unselfconscious that he seems to share his heart and spirit directly with us. In May, **Gustavo Dudamel** will lead the Los Angeles Philharmonic in all four symphonies, plus Schumann's two greatest concertos — with pianist **Mitsuko Uchida** and cellist **Sol Gabetta** — and a major neglected gem staged by **Peter Sellars**.

MAY 22-JUN 3 Series: TH1, TH2, FR2, FRM, FRC2, SA1,  
SA2, SAM, SU1, SU2, SU3, CH2





# Composer Salonen

## A Look at his Extraordinary Music

During his 17 years as the LA Phil's Music Director, **Esa-Pekka Salonen** became one of the most important and beloved conductors of our time. He also emerged as a world-class composer from whose new Los Angeles roots sprang extraordinary music, much of which was premiered right here. We take great pride in presenting four programs of his brilliant work, in the first of which he'll conduct three concertos, each with a superstar soloist: **Yo-Yo Ma**, **Yefim Bronfman**, and **Leila Josefowicz**. April's program features a world premiere conducted by **Gustavo Dudamel**.

FEB 8-11      Series: TH1, FR1, FRM, FRC2, SA2,  
FEB 16-18      SAM, SU1, SU2, SU3, SY1, SY2  
FEB 24, MAR 10  
APR 13-15

"A fiercely committed and very fine [composer]...in his own works, the orchestra swivels, surges, and throws off sparks... He is a master of the long and lovely meditation."

*New York Magazine*

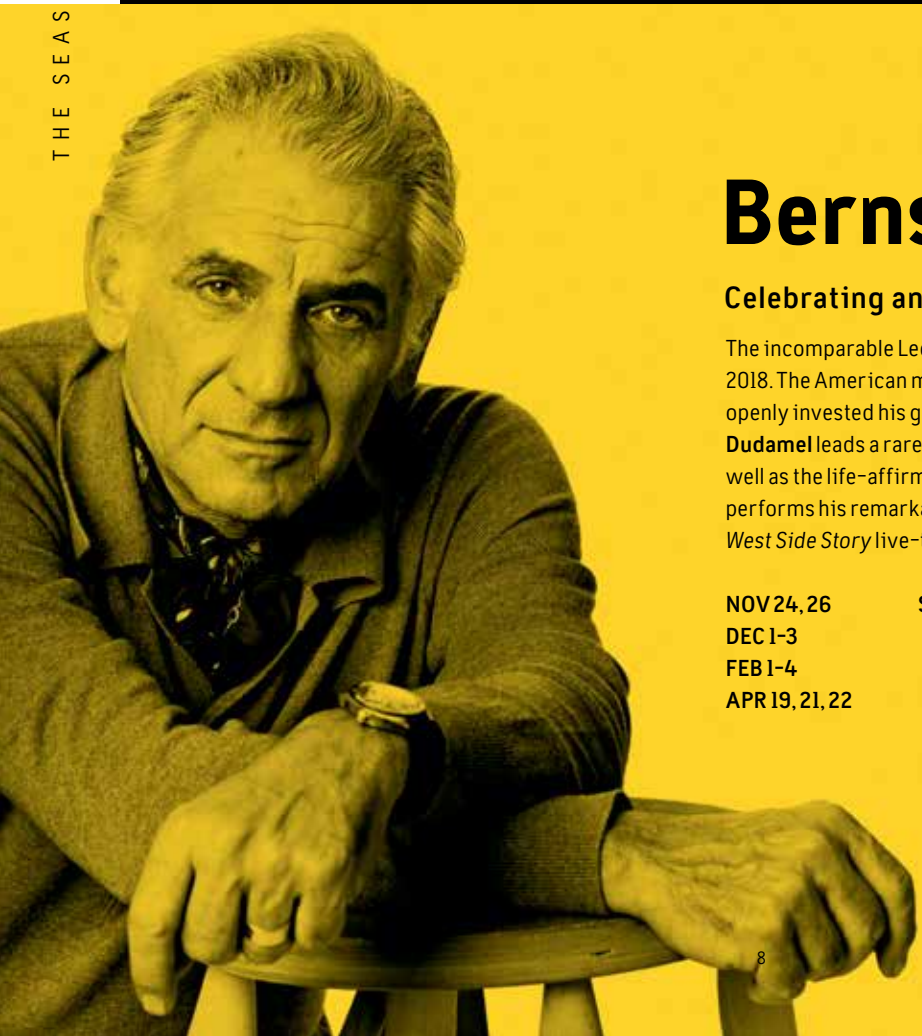


# Bernstein 100


## Celebrating an American Original

The incomparable Leonard Bernstein would have turned 100 in 2018. The American musical giant, a son of Ukrainian immigrants, openly invested his generous personality into everything he wrote. **Dudamel** leads a rare production of his all-encompassing *Mass*, as well as the life-affirming *Chichester Psalms*. Violinist **Hilary Hahn** performs his remarkable *Serenade*, and **David Newman** conducts *West Side Story* live-to-picture.

NOV 24, 26      Series: TH2, FR2, FR3, FRC1,  
DEC 1-3      SAI, SA3, SU1, SU2, SU3  
FEB 1-4  
APR 19, 21, 22



# Multidisciplinary Productions

Reflecting the LA Phil's commitment to large-scale productions highlighting sight, sound and movement, these ambitious programs offer a sampling of the varied range of our in/SIGHT concerts. Look for this symbol [  ] in the calendar pp. 14-37.

## War of the Worlds

Orson Welles' 1939 "fake news" led millions of panicked listeners to believe that aliens were invading. **Yuval Sharon** takes the original radio script as the basis of an audacious new performance piece to be heard around L.A. — at WWII-era sirens reactivated for two-way communication — and simultaneously at Walt Disney Concert Hall. Composer **Annie Gosfield's** use of radio sounds makes her the ideal collaborator in this must-see event.

NOV 12, 18\*      Series: GUI  
\*Part of *Noon to Midnight*



## Mälkki: Strauss and Saarinen

Our new Principal Guest Conductor **Susanna Mälkki** perfectly encapsulates her singular musical perspective and approach by programming the U.S. premiere of Bernd Alois Zimmermann's Cello Concerto — as it was meant to be, choreographed for three dancers — alongside works by Bach and Strauss. For these concerts, she will collaborate with the innovative Finnish choreographer **Tero Saarinen** and his dance company.

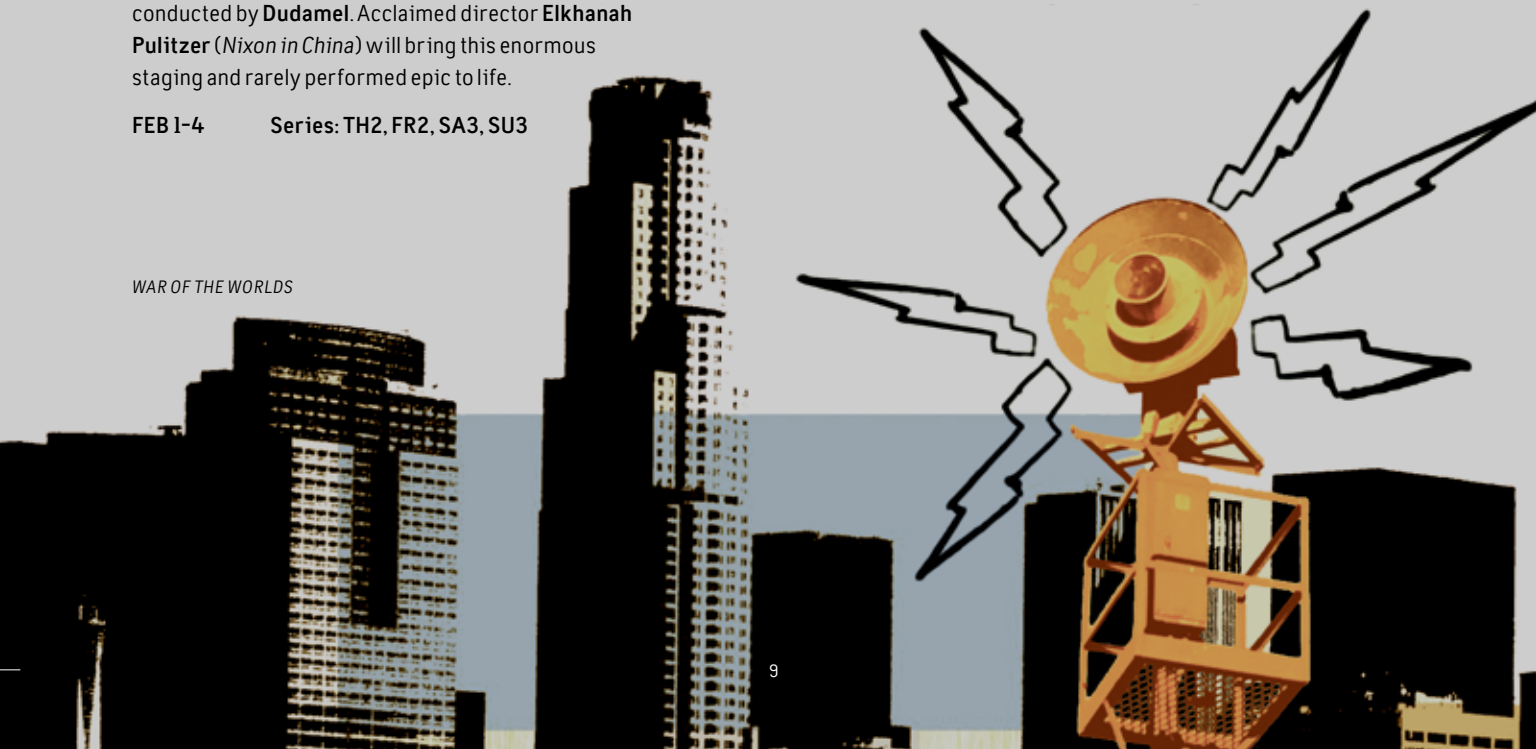
JAN 19-21      Series: FRC2, SAI, SU2

## Bernstein's Mass

Bernstein's eclectic and very personal *Mass* calls for huge forces including orchestra, street singers, adult and children's choruses, rock and marching bands, and more, all to be conducted by **Dudamel**. Acclaimed director **Elkhanah Pulitzer** (*Nixon in China*) will bring this enormous staging and rarely performed epic to life.

FEB 1-4      Series: TH2, FR2, SA3, SU3

WAR OF THE WORLDS



## Mahler's Song of the Earth

Mahler's penultimate completed work — revelatory settings of ancient Chinese poems on life, love, and loss, for two singers and orchestra — resists classification; is it a song cycle, symphony, operatic drama? **Gustavo Dudamel** will lead an unprecedented staging by our Artist-Collaborator **Yuval Sharon** in partnership with **TEATROCINEMA**, Chile's imaginative theater company that creates digital backgrounds with 2D and 3D video. These interact live with the performers, heightening the profound impact of this extraordinary music.

APR 5-7      Series: TH1, FR3, SA2



## Peter Sellars & the Peri

Schumann's massive and rarely performed oratorio *Das Paradies und die Peri* will be staged by illustrious director **Peter Sellars**, inspired by the stunning art found in the cave temples at Dunhuang, China. With **Dudamel** conducting a phenomenal cast and immersive visuals by innovative designer **Refik Anadol**, these concerts will stir deeply both heart and mind.

JUN 1-3      Series: FRC2, SA2, SU1



# COLLABORATORS & VISIONARIES

EXPANDING PERSPECTIVES



## Susanna Mälkki

### Principal Guest Conductor

Recently named *Musical America's* "Conductor of the Year," Susanna Mälkki begins a three-year appointment as our first Principal Guest Conductor since Sir Simon Rattle and Michael Tilson Thomas more than 30 years ago. Share in the thrill as she brings her unique and forward-thinking vision to three orchestral programs, plus a Green Umbrella concert.

OCT 27-29  
NOV 2-5  
JAN 19-21  
JAN 23

Series: TH2, FR1, FR2, FRC2, SA1,  
SA2, SA3, SU1, SU2, SU3, GUI

"My fundamental wish is to share the joy I experience in the music. We don't play and listen to difficult music out of a sense of duty, but because it is something fascinating and exhilarating which keeps our playing and listening real."

Susanna Mälkki

## Yuval Sharon

### Artist-Collaborator

"L.A.'s avant-garde opera darling" (*Hollywood Reporter*). Yuval Sharon returns for a second season with three major projects, on stage and throughout the city.

NOV 12, 18\*  
MAR 2, 3  
APR 5-7

Series: TH1, FR2, FR3, SA2, GUI  
\*Additional Concert

"[Sharon] has broken the fourth wall with a vengeance, not merely freeing opera from the opera house, but making its heightened expression the sound of real, everyday and inner life."

*The Wall Street Journal*



**YS**  
PROJECT Look for this symbol



Herbie Hancock



Mitsuko Uchida



Zubin Mehta



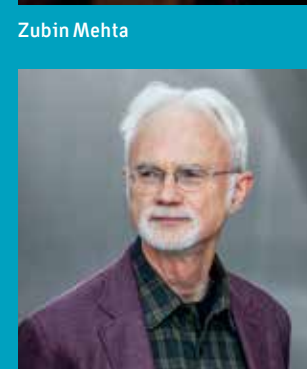
Hilary Hahn



Charles Dutoit



András Schiff



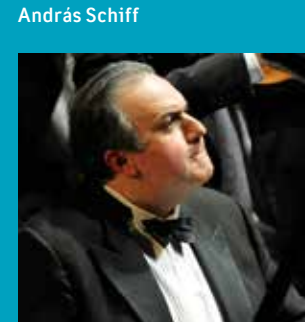
John Adams



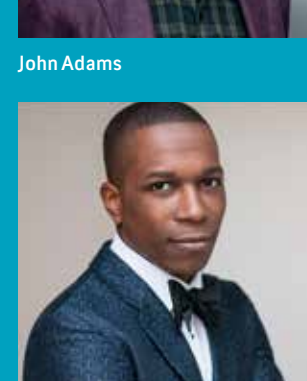
Yo-Yo Ma



Leila Josefowicz



Yefim Bronfman



Leslie Odom, Jr.



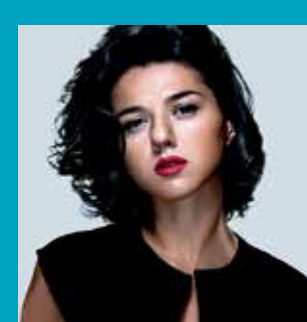
Itzhak Perlman



Julia Bullock



Dianne Reeves



Khatia Buniatishvili



Yuja Wang



Art Garfunkel



Jean-Yves Thibaudet



Emanuel Ax



Martha Argerich





# SERIES AT A GLANCE

## Los Angeles Philharmonic (Orchestral)

TH1/2, FRI1/2/3, FRM, FRC1/2, SA1/2/3, SAM, SU1/2/3, SY1/2

There are 17 series featuring our orchestra, available on Thursdays through Sundays, each crafted to provide balance, variety and inspiration.

Three with unique features are:

### Casual Fridays FRC1

Come as you are! Enjoy a shorter program, post-concert Q&A, and an after-party with the musicians.

### Inside the Music FRC2

KUSC's Brian Lauritzen hosts. Your ticket includes a preview video and podcast, plus pre- and post-concert presentations and Q&As.

### Toyota Symphonies for Youth SY1, SY2

Saturday morning programs for children 5-11, preceded by art workshops.

## Baroque BV1

Leading artists in programs that speak to all facets of early music and the Baroque era.

## Colburn Celebrity Recitals CE1, CE2

The finest artists in the world in intimate performances.

## Chamber Music CH1, CH2

Members of the orchestra and guests perform music for small ensembles, preceded by a wine reception.

## Organ Recitals OR1

The world's top organists perform remarkable repertoire that highlights our Hall's powerful instrument.

## Green Umbrella GU1

This acclaimed new music series is the LA Phil at its most daring.

## World Music WM1

International sensations, live in concert!

## Jazz JZ1

Four brilliant evenings, plus a bonus concert, curated by Creative Chair for Jazz Herbie Hancock.

## Songbook SB1

Devoted to performers of the Great American Songbook and beyond.

Programs, artists, prices and dates subject to change

# SEASON CALENDAR

SEPTEMBER–OCTOBER



Gustavo Dudamel



J'Nai Bridges



Wolfgang Amadeus Mozart

GALA

Tue SEP 26 7pm

Opening Night Concert & Gala

Los Angeles Philharmonic  
Gustavo Dudamel, conductor

All-MOZART program

ORCHESTRAL

Fri SEP 29 11am (FRM)  
Sat SEP 30 8pm (SA2)  
Sun OCT 1 2pm (SUI)

Mozart 1791: Final Piano Concerto

In his final year, Mozart penned some of his most extraordinary music. For this special program, Gustavo includes the last piano concerto and exquisite vocal works, such as *Ave verum corpus* and the rarely heard K. 623, known as the *Little Masonic Cantata*, for men's voices.

Los Angeles Philharmonic	MOZART Overture to <i>La clemenza di Tito</i>
Gustavo Dudamel, conductor	Piano Concerto No. 27, K. 595
Javier Perianes, piano	"Parto, parto, ma tu ben mio"
J'Nai Bridges, mezzo-soprano	from <i>La clemenza de Tito</i>
Paul Appleby, tenor	<i>Laut verkünde unsre Freude</i> , K. 623
Shenyang, bass-baritone	<i>Ave verum corpus</i> , K. 618
Los Angeles Master Chorale	
Grant Gershon, Artistic Director	

CHAMBER MUSIC

Tue OCT 3 8pm (CHI)

All-Mozart

Mozart's intimate musical thoughts are at the heart of this season's first chamber music program.

members of the Los Angeles Philharmonic	program to include: MOZART String Quintet in E-flat, K. 614
<i>preceded by a complimentary wine reception</i>	

ORCHESTRAL

Thu OCT 5 8pm (TH2)  
Fri OCT 6 8pm (FRC2)  
Sat OCT 7 8pm (SA1)  
Sun OCT 8 2pm (SU2)

Mozart 1791: Scenes from *The Magic Flute*

For his second week focused on Mozart's final year, Dudamel leads the gorgeous Clarinet Concerto – featuring one of the world's greatest clarinet soloists – and highlights from the enchanted opera *The Magic Flute*. Both works were premiered shortly before Mozart's untimely death.

Los Angeles Philharmonic	MOZART Clarinet Concerto, K. 622
Gustavo Dudamel, conductor	MOZART Selections from <i>The Magic Flute</i> , K. 620
Martin Fröst, clarinet	
Julia Bullock, Pamina	
Paul Appleby, Tamino	
Elliot Madore, Papageno	
Jessica Pratt, Queen of the Night	
additional artists to be announced	

ORGAN RECITALS

Sun OCT 8 7:30pm (ORI)

Jean-Baptiste Robin in Recital

Organist of the Royal Chapel at the Palace of Versailles, Jean-Baptiste Robin is widely regarded as one of the most prominent French organists of his generation, particularly for his performances of French Baroque music.

program to be announced

JAZZ

Mon OCT 9 8pm (JZ1)



CDMX: BiRDMAN LiVE

Mexican percussionist, composer and five-time Grammy®-winner Antonio Sanchez performs his unique and vibrant percussion-only score live-to-picture for a screening of *Birdman*, which won the Oscar® for Best Picture in 2014. "Mr. Sanchez emerged as one of the standout jazz drummers on the contemporary scene, a polyrhythmic ace attuned to the subtlest dynamic fluctuations." – *The New York Times*

Antonio Sanchez

WORLD MUSIC

Thu OCT 12 8pm (WM1)

CDMX: Natalia Lafourcade

Seven-time Latin Grammy®-winner Natalia Lafourcade is one of Mexico's biggest contemporary music stars. While anchored in her traditional roots, she also explores reggae, bossa nova, and calypso with intriguing acoustic guitar, piano, and stunningly delicate vocals. For the first time, she will be accompanied by the Los Angeles Philharmonic.

Los Angeles Philharmonic  
Gustavo Dudamel, conductor  
Natalia Lafourcade



Julia Bullock



Jean-Baptiste Robin



Antonio Sanchez



Natalia Lafourcade

SEASON CALENDAR

SEASON CALENDAR





Gustavo Dudamel



Mexrrissey



Café Tacvba



Carlos Miguel Prieto

Fri OCT 13 8pm  
👁

CDMX: Noche de Cine

From the Golden Age of Mexican cinema to present day, Mexico City has been the center of the Latin American film scene. Celebrate an evening of scores and songs from beloved films both classic and modern.

Los Angeles Philharmonic  
Gustavo Dudamel, conductor

Sat OCT 14  
time to be announced

CDMX: Now!

A celebratory snapshot of Ciudad de México's colorfully vibrant music community – featuring established and emerging acts who highlight the rich traditions and contemporary creativity overflowing from this Latin-American capital.

Mexrrissey  
La Sonora Santanera  
additional artists to be announced

Sun OCT 15 7:30pm

CDMX: Café Tacvba

For the first time in their 28 years, the “greatest rock band in Mexico...and...possibly even the world” (*The New York Times*), Café Tacvba, performs with full orchestra. Celebrating a new record, this special concert, conducted by Gustavo Dudamel, will showcase their extraordinary catalog with imaginative new arrangements and their distinctive attitude.

Los Angeles Philharmonic  
Gustavo Dudamel, conductor  
Café Tacvba

GREEN UMBRELLA  
Tue OCT 17 8pm (GUI)

CDMX: New Music from Mexico

To conclude our focus on the music of Mexico City, new music expert Prieto leads a performance that includes five world premieres by talented and acclaimed composers with connections to Mexico's great capital city.

LA Phil New Music Group Carlos Miguel Prieto, conductor	Édgar GUZMÁN new work for chamber ensemble* Juan Felipe WALLER new work for ensemble* Ivan NARANJO new work for ensemble* Diana SYRSE new work for ensemble* Alejandro CASTAÑOS new work for chamber ensemble*
--	--

\*(world premiere, LA Phil commission)

CDMX is part of Pacific Standard Time: LA/LA, a far-reaching and ambitious exploration of Latin American and Latino art in dialogue with Los Angeles, taking place from September 2017 through January 2018 at more than 60 cultural institutions across Southern California. Pacific Standard Time is an initiative of the Getty. The presenting sponsor is Bank of America. Supported through grants from the Getty Foundation.



Gil Shaham



Mirga Gražinytė-Tyla



Gidon Kremer



Riccardo Muti

COLBURN CELEBRITY  
RECITALS

Wed OCT 18 8pm (CEI)

Shaham in Recital

One of the world's most acclaimed violinists returns for an intimate evening of musical gold, with examples from the 18th century to the 21st. He is joined by his frequent recital partner, composer-pianist Akira Eguchi.

Gil Shaham, violin Akira Eguchi, piano	KREISLER Preludium and Allegro PROKOFIEV Five Melodies, Op. 35 FRANCK Violin Sonata in A BACH Partita No. 3 in E for solo violin SAINT-SAËNS Introduction and Rondo Capriccioso Avner DORMAN <i>Nigunim</i>
---	---

ORCHESTRAL

Thu OCT 19 8pm (TH1)  
Fri OCT 20 8pm (FR3)  
Sat OCT 21 2pm (SAM)

Mirga Conducts Mahler

In this transporting program, a veteran virtuoso performs the dramatic Violin Concerto by prolific Soviet composer Mieczysław Weinberg, a Shostakovich colleague. Mirga leads Mahler's shortest and sweetest symphony, which concludes with a child's view of life in heaven.

Los Angeles Philharmonic Mirga Gražinytė-Tyla, conductor Gidon Kremer, violin Janai Brugger, soprano	MESSIAEN <i>Un sourire</i> (A Smile) WEINBERG Violin Concerto MAHLER Symphony No. 4
---	---

VISITING  
ORCHESTRAS

Sun OCT 22 7:30pm

Chicago Symphony Orchestra

One of the world's most honored orchestras and its revered Music Director delight Brahms lovers with the two warm, buoyant middle symphonies.

Chicago Symphony Orchestra Riccardo Muti, conductor	BRAHMS Symphony No. 3 Symphony No. 2
--	---

CHAMBER MUSIC

Tue OCT 24 8pm (CH2)

Chamber Music

Listening to music on an intimate level at our Chamber Music concerts is a great way to relax and restore.

members of the Los Angeles Philharmonic program to be announced  
*preceded by a complimentary wine reception*



M. Ward

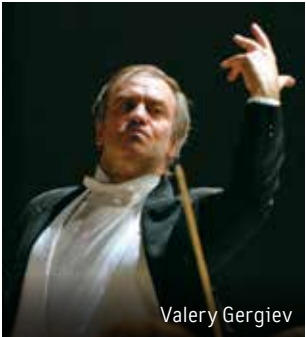


Leila Josefowicz



photo credit Chris Lee

Susanna Mälkki



Valery Gergiev

WORLD MUSIC

Wed OCT 25 8pm (WM1)

M. Ward • Rhiannon Giddens

M. Ward returns to Los Angeles for this very special evening. The singer-songwriter and producer hailing from Portland, OR, will be delving into his acclaimed catalog from his eight solo albums spanning genres of folk, rock, doo-wop and more. Rhiannon Giddens will captivate audiences with a powerful performance highlighting her latest album, *Freedom Highway*.

ORCHESTRAL

Fri OCT 27 8pm (FR2)

Sat OCT 28 8pm (SA3)

Sun OCT 29 2pm (SU3)

Symphonie fantastique with Susanna Mälkki

Premiered by the remarkable partnership of Mälkki and Josefowicz, Francesconi's hallucinogenic concerto is both modern and sonically beautiful, a perfect program partner for Berlioz' drug-induced dream/nightmare from 185 years earlier.

Los Angeles Philharmonic	BERLIOZ "Queen Mab" Scherzo
Susanna Mälkki, conductor	Luca FRANCESCONI <i>Duende – The Dark Notes</i> (U.S. premiere)
Leila Josefowicz, violin	BERLIOZ <i>Symphonie fantastique</i>

HALLOWEEN FILM

WITH ORGAN

Tue OCT 31 8pm

Phantom of the Opera

Just imagine – the audience screamed or fainted at the now-famous unmasking of the Phantom (Lon Chaney in his ghastly, self-created makeup). The 1925 thriller remains one of the most unforgettable horror films of the silent era.

Clark Wilson, organ

VISITING ORCHESTRAS

Wed NOV 1 8pm

Mariinsky Orchestra

This pre-eminent ensemble, known for years as the Kirov Orchestra, has been thrust into the forefront of great Russian orchestras by its charismatic and indefatigable Music Director, Valery Gergiev. They will treat us to a rich, substantial program of 20th-century Russian masters.

Mariinsky Orchestra	SHOSTAKOVICH Symphony No. 9
Valery Gergiev, conductor	PROKOFIEV Piano Concerto No. 2
Denis Matsuev, piano	SCRIABIN Symphony No. 3

ORCHESTRAL

Thu NOV 2 8pm (TH2)

Fri NOV 3 8pm (FR1)

Sat NOV 4 8pm (SA2)

Sun NOV 5 2pm (SU1)



A Midsummer Night's Dream

Our new Principal Guest Conductor presides over the irresistible combination of Mendelssohn and Shakespeare at their faerie magic best.

Los Angeles Philharmonic	MENDELSSOHN <i>A Midsummer</i>
Susanna Mälkki, conductor	<i>Night's Dream</i> (with scenes
Women of the Los Angeles Master Chorale	from Shakespeare's play)
Grant Gershon, Artistic Director	

BAROQUE

Tue NOV 7 8pm (BV1)

Les Arts Florissants

Led by their founder, one of the finest vocal and instrumental early music ensembles in the world performs two short Baroque musical tragedies by a pair of composers in whose works these musicians are unsurpassed.

Les Arts Florissants	PURCELL <i>Dido and Aeneas</i>
William Christie, conductor	CHARPENTIER <i>Actéon</i>

ORCHESTRAL

Thu NOV 9 8pm (TH1)

Fri NOV 10 11am (FRM)

Sat NOV 11 8pm (SA1)

Dutoit Conducts Ravel

The conductor who has made some of the greatest Ravel recordings ever leads our celebration of the French master, including the charming one-act comic opera *L'heure espagnole* and the extraordinary Concerto in G with L.A. favorite Jean-Yves Thibaudet.

Los Angeles Philharmonic	RAVEL <i>Pavane for a Dead Princess</i>
Charles Dutoit, conductor	Piano Concerto in G
Jean-Yves Thibaudet, piano	<i>L'heure espagnole</i>
Isabel Leonard, Concepción	
François Piolino, Torquemada	
Ben Hulett, Gonzalve	
Jean-Luc Ballestra, Ramiro	
David Wilson-Johnson, Don Iñigo	

GREEN UMBRELLA

Sun NOV 12 2pm (GUI)

Also presented as part of *Noon to Midnight* on Nov 18.



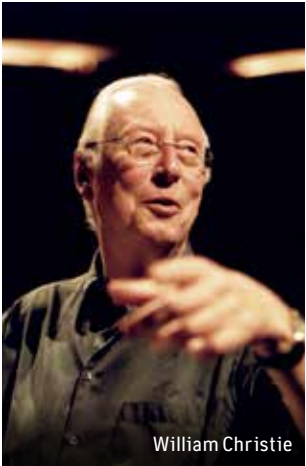
YS PROJECT

Produced in collaboration with The Industry and Now Art.

War of the Worlds

Orson Welles' radio script becomes the basis of a performance piece presented simultaneously at Walt Disney Concert Hall and at locations around L.A.

LA Phil New Music Group	Annie GOSFIELD <i>War of the Worlds</i>
Christopher Rountree, conductor	(world premiere, LA Phil commission)
Yuval Sharon, director	



William Christie



Charles Dutoit



Jean-Yves Thibaudet



Yuval Sharon



NOVEMBER-DECEMBER



CHAMBER MUSIC

Tue NOV 14 8pm (CM1)

French Music

Enjoy this rich program of intimate French delights to relax and restore your spirit.

members of the Los Angeles Philharmonic program to be announced  
*preceded by a complimentary wine reception*

ORCHESTRAL

Thu NOV 16 8pm (TH2)  
Fri NOV 17 8pm (FR2)  
Sun NOV 19 2pm (SU3)

Bach & Pergolesi

The highly acclaimed early music maestro leads this 18th-century program bringing together the famous Third Suite by J.S. Bach, Purcell's suite inspired by Shakespeare, and Pergolesi's masterpiece, written in the final weeks of his all-too-brief life: a lamentation about Mary at the foot of the cross.

Los Angeles Philharmonic PURCELL Suite from *The Fairy Queen*  
Emmanuelle Haïm, conductor RAMEAU Suite from *Les Indes Galantes*  
Laura Claycomb, soprano BACH Suite No. 3 in D, BWV 1068  
Christophe Dumaux, countertenor PERGOLESI *Stabat Mater*

Sat NOV 18 12pm



Noon to Midnight: A Day of New Music

Following last year's extraordinary success, N2M will let you roam the spaces of Walt Disney Concert Hall in a festival atmosphere for a day of pop-up performances featuring L.A.'s top new music ensembles.

LA Phil New Music Group day to include:  
Christopher Rountree, conductor Annie GOSFIELD *War of the Worlds*  
Yuval Sharon, director (LA Phil commission)

ORCHESTRAL

Fri NOV 24 8pm (FR3)  
Sun NOV 26 2pm (SU2)

West Side Story ©1961  
Metro-Goldwyn-Mayer  
Studios Inc.  
All rights reserved.  
© A.M.P.A.S.

Bernstein 100: *West Side Story*

In honor of the Leonard Bernstein Centennial, experience the iconic winner of ten Oscars® as never before – with Bernstein's score performed live with the re-mastered film (directed by Robert Wise and Jerome Robbins, featuring Robbins' choreography, Ernest Lehman's screenplay, Arthur Laurents' book and Stephen Sondheim's lyrics) all projected in HD.

Los Angeles Philharmonic BERNSTEIN *West Side Story*  
David Newman, conductor

ORCHESTRAL

Fri DEC 1 8pm (FRC1)  
Sat DEC 2 8pm (SA1)  
Sun DEC 3 2pm (SU3)

Bernstein 100: Hilary Hahn Plays Bernstein

One of the world's greatest violinists joins the LA Phil for Leonard Bernstein's fascinating concertante work, inspired by Plato's discourse on all aspects of love. To open, Cuban-born composer Tania León shares her latest work.

Los Angeles Philharmonic Tania LEÓN new work for orchestra  
Miguel Harth-Bedoya, conductor (except Fri) (world premiere,  
Hilary Hahn, violin LA Phil commission)  
BERNSTEIN *Serenade*  
RACHMANINOFF Symphony No. 3

DECEMBER



TOYOTA SYMPHONIES FOR YOUTH

Sat DEC 2 11am (SY1)

Stravinsky's *Firebird*

Los Angeles Philharmonic

SOUNDS ABOUT TOWN

Sun DEC 3 7pm

Los Angeles Children's Chorus

Anne Tomlinson, conductor program to be announced

CHAMBER MUSIC

Tue DEC 5 8pm (CH2)

Bach & Mendelssohn

An insightful pairing of chamber works by these two great masters makes for a well-rounded experience.

members of the Los Angeles Philharmonic program to be announced  
*preceded by a complimentary wine reception*

COLBURN CELEBRITY RECITALS

Wed DEC 7 8pm (CE2)

Calder Quartet

Winners of a prestigious Avery Fisher Career Grant, this innovative and acclaimed chamber ensemble excels across the full range of genres and collaborates with artists from every point on the spectrum.

program to include:  
SCHUBERT String Quartet No. 14, "Death and the Maiden"

ORCHESTRAL

Fri DEC 8 11am (FRM)  
Sat DEC 9 8pm (SA3)  
Sun DEC 10 2pm (SUI)

Tchaikovsky's First Piano Concerto

A renowned conductor and the pianist who tore it up in 2016 join forces for *the* Romantic piano concerto. Prokofiev's musical outpouring of grief at the losses from WWII concludes this multifaceted concert.

Los Angeles Philharmonic CHEN YI *Ge Zu (Antiphony)*  
Xian Zhang, conductor TCHAIKOVSKY Piano Concerto No. 1  
Sergio Tiempo, piano PROKOFIEV Symphony No. 6

SONGBOOK

Fri DEC 8 8pm (SB1)

Leslie Odom, Jr.

Having won a Tony Award® for his portrayal of Aaron Burr in *Hamilton* on Broadway, this deft, stylish and charismatic star will perform songs from his recent, self-titled debut album, as well as some holiday favorites, backed by a four-piece combo.

<b>TOYOTA SYMPHONIES FOR YOUTH</b> Sat DEC 9 11am (SY2)	<b>Stravinsky's <i>Firebird</i></b>  Los Angeles Philharmonic
<b>ORCHESTRAL</b> Thu DEC 14 8pm (TH1) Fri DEC 15 8pm (FR1) Sat DEC 16 8pm (SA1) Sun DEC 17 2pm (SU2)	<b>Mozart &amp; Bruckner with Mehta</b>  The LA Phil's beloved former Music Director returns for a classic combination of Mozart and Bruckner, featuring the latter's powerful but poignantly unfinished final symphony.  Los Angeles Philharmonic Zubin Mehta, conductor Khatia Buniatishvili, piano  MOZART Piano Concerto No. 23 in A, K. 488 BRUCKNER Symphony No. 9
<b>DECK THE HALL</b> Sat DEC 16 11:30am, 2:30pm	<b><i>Holiday Sing-Along</i></b>  Accompanied by Walt Disney Concert Hall's huge pipe organ, a choir and a jazz combo, you'll enjoy singing everything from "Silent Night" to "Rudolph the Red-Nosed Reindeer," hosted by the hilarious Melissa Peterman. A jolly good time for the entire family!  Melissa Peterman, host John Sutton, conductor Angeles Chorale
<b>DECK THE HALL</b> Tue DEC 19 8pm	<b><i>A Chanticleer Christmas</i></b>  Possibly America's finest chorus, this 12-man Grammy®-winning ensemble makes a welcome return with their impeccable singing and eclectic Christmas program, ranging from Gregorian chant to American spirituals.
<b>DECK THE HALL</b> Wed DEC 20 8pm	<b>Dianne Reeves – <i>Christmas Time Is Here</i></b>  One of the greatest jazz voices of our time brings to life many songs from her album of classic Christmas carols.
<b>DECK THE HALL</b> Fri DEC 22 8pm	<b>Naturally 7</b>  The a cappella sensations, who produce all their "instrumental" accompaniments with their own voices, perform a holiday-themed program that's sure to warm you up!



Zubin Mehta



Khatia Buniatishvili



Chanticleer



Dianne Reeves



Naturally 7

<b>DECK THE HALL</b> Sat DEC 23 3pm, 8pm	<b><i>White Christmas</i> Sing-Along</b>  Enjoy singing along with such songs as "The Best Things Happen When You're Dancing," "Snow," "Sisters" and, of course, the iconic "White Christmas," as you watch a screening of this beloved 1954 film, with all the lyrics on screen.
<b>DECK THE HALL</b> Sun DEC 31 7pm, 10:30pm	<b>New Year's Eve</b>  Ring in the New Year with outstanding music in a grand finale to the holiday season.  artists to be announced
<b>ORCHESTRAL</b> Fri JAN 5 8pm (FR2) Sat JAN 6 8pm (SA3)	<b>Debussy, Ravel &amp; Beyond</b>  One of the greatest conductor/composers of his generation, Pintscher brings his composer's ear to all he conducts. Great French violinist Capuçon collaborates with him on Pintscher's concerto. The rest of this gorgeous program revisits three great French composers from the turn of the last century.  Los Angeles Philharmonic Matthias Pintscher, conductor Renaud Capuçon, violin  RAVEL <i>Rapsodie espagnole</i> Matthias PINTSCHER <i>mar'eh</i> (West Coast premiere) DEBUSSY <i>Iberia</i> from <i>Images</i> DUKAS <i>The Sorcerer's Apprentice</i>
<b>BAROQUE</b> Tue JAN 9 8pm (BV1)	<b><i>Vivaldi, the Farewell Concertos</i></b>  Biondi and Europa Galante, among the best of the best, take you back in time to experience works written by an impoverished Vivaldi near the end of his life, in search of a new beginning in Vienna.  Europa Galante Fabio Biondi, violin and conductor  GALUPPI Overture to <i>Adriano in Siria</i> VIVALDI Sinfonia in G for strings, RV 149, "Il Coro delle muse" Violin Concerto in A, RV 552, "con eco in lontano" REUTTER Sinfonia in D minor HOLZBAUER Flute Concerto in G REINHARDT Sonata a quattro violini e basso VIVALDI Violin Concerto in C, RV 186 Violin Concerto in B-flat, RV 371



White Christmas  
© Paramount Pictures



Matthias Pintscher



Renaud Capuçon



Fabio Biondi



Europa Galante





Itzhak Perlman

ORCHESTRAL

Thu JAN 11 8pm (TH2)  
Fri JAN 12 11am (FRM)  
Sat JAN 13 8pm (SA2)

Itzhak Perlman Plays & Conducts

The beloved violinist shares a wide-ranging program as both conductor and soloist, from energizing Bach through delightful Brahms to noble Elgar.

Los Angeles Philharmonic Itzhak Perlman, violin and conductor	BACH Violin Concerto No. 1 in A minor, BWV 1041 BRAHMS Variations on a Theme of Joseph Haydn ELGAR <i>Enigma Variations</i>
--	---



Susanna Mälkki

TOYOTA SYMPHONIES  
FOR YOUTH

Sat JAN 13 11am (SY1)

*The Magic of Dvořák*

Los Angeles Philharmonic

ORCHESTRAL

Fri JAN 19 8pm (FRC2)  
Sat JAN 20 8pm (SA1)  
Sun JAN 21 2pm (SU2)



Mälkki: Strauss and Saarinen

Principal Guest Conductor Susanna Mälkki cuts across a vast range of German music, featuring our brilliant Principal Cellist in Bernd Alois Zimmermann's highly colorful and uniquely creative concerto from 1966, complete with dancers. The massive orchestra Strauss requires for his Alpine climb creates imposing force.

Los Angeles Philharmonic Susanna Mälkki, conductor Robert deMaine, cello Tero Saarinen Company	BACH (arr. WEBERN) Ricercar ZIMMERMANN Concerto for cello and orchestra, <i>en forme de pas de trois</i> (U.S. premiere) STRAUSS <i>An Alpine Symphony</i>
---	--

TOYOTA SYMPHONIES  
FOR YOUTH

Sat JAN 20 11am (SY2)

*The Magic of Dvořák*

Los Angeles Philharmonic



Toyota Symphonies for Youth



Katelyn Emerson

ORGAN RECITALS

Sun JAN 21 7:30pm (OR1)

Katelyn Emerson in Recital

The number of prizes, milestones and raves that rising star organist Katelyn Emerson has racked up is even more astounding coupled with the fact that she's only recently out of school.

program to include works by ALAIN, BACH, DUPRÉ, and VIERNE





SEASON CALENDAR

SEASON CALENDAR



Susanna Mälkki

**GREEN UMBRELLA**  
Tue JAN 23 8pm (GU1)

**Mälkki Conducts**

Our new Principal Guest Conductor displays one of her great strengths by illuminating works from the cutting edge of the avant-garde.

LA Phil New Music Group Susanna Mälkki, conductor	Francesca VERUNELLI <i>Unfolding</i> (string quartet) Marcos BALTER new work for ensemble (world premiere, LA Phil commission) Francesco FILIDEI <i>Toccata</i> Helmut LACHENMANN <i>Mouvement</i>
--	---



Gustavo Dudamel

**ORCHESTRAL**  
Thu JAN 25 8pm (TH1)  
Fri JAN 26 8pm (FR1)  
Sun JAN 28 2pm (SU1)

**Dudamel Conducts Brahms**

With his ever-deepening interpretations, Dudamel returns to Brahms' grand and imposing First Symphony. Our gifted Principal Timpanist premieres another of his intriguing, pulsating compositions.

Los Angeles Philharmonic Gustavo Dudamel, conductor Joseph Pereira, timpani Maraca 2, percussion	STRAVINSKY <i>Fireworks</i> Joseph PEREIRA Concerto for timpani and two percussion (world premiere, LA Phil commission) BRAHMS <i>Symphony No. 1</i>
---	--

**JAZZ**  
Sat JAN 27 8pm (JZ1)

**Herbie Hancock**

Our esteemed Creative Chair for Jazz will perform another one-of-a-kind concert. Details to be announced soon!

Herbie Hancock, keyboards



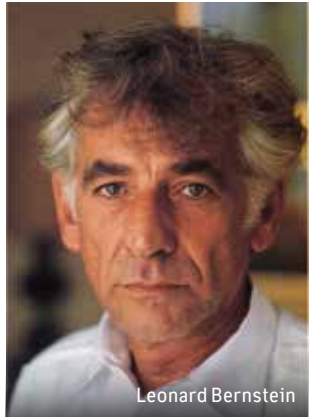
Herbie Hancock

**ORCHESTRAL**  
Thu FEB 1 8pm (TH2)  
Fri FEB 2 8pm (FR2)  
Sat FEB 3 8pm (SA3)  
Sun FEB 4 2pm (SU3)  
👁

**Bernstein 100: Bernstein's Mass with Dudamel**

Dudamel marshals a huge cast of singers, choirs, dancers, rock band, marching band and orchestra for Bernstein's unabashedly eclectic and highly dramatic theater piece. For this sweeping summation of life and music, Bernstein himself wrote most of the lyrics, which lay bare the crisis of faith experienced by a priest celebrating mass.

Los Angeles Philharmonic Gustavo Dudamel, conductor Elkhanah Pulitzer, director Los Angeles Master Chorale Grant Gershon, Artistic Director Los Angeles Children's Chorus Anne Tomlinson, Artistic Director cast to be announced	BERNSTEIN <i>Mass</i>
---	-----------------------



Leonard Bernstein

**CHAMBER MUSIC**  
Tue FEB 6 8pm (CH1)

**Chamber Music**

Listening to music on an intimate level at our Chamber Music concerts is a great way to relax and restore.

members of the Los Angeles Philharmonic program to be announced  
*preceded by a complimentary wine reception*

**ORCHESTRAL**  
Thu FEB 8 8pm (TH1)  
Fri FEB 9 8pm (FRC1)  
Sat FEB 10 8pm (SA2)  
Sun FEB 11 2pm (SU2)

**Composer Salonen: Concertos**

A Who's Who of top virtuosos alternate for three spectacular concertos composed by our Conductor Laureate, who also leads one of Beethoven's most exciting symphonies. What a weekend!

Los Angeles Philharmonic Esa-Pekka Salonen, conductor Yo-Yo Ma, cello (Feb 8) Yefim Bronfman, piano (Feb 9, 10) Leila Josefowicz, violin (Feb 11)	BIBER <i>Battalia</i> (except Fri) Esa-Pekka SALONEN Cello Concerto (Feb 8, West Coast premiere) Piano Concerto (Feb 9, 10) Violin Concerto (Feb 11) BEETHOVEN <i>Symphony No. 7</i>
---	---

**CHAMBER MUSIC**  
Tue FEB 13 8pm (CH2)

**All-Beethoven**

Be captivated by incomparable chamber works of Beethoven.

members of the Los Angeles Philharmonic program to be announced  
*preceded by a complimentary wine reception*

**ORCHESTRAL**  
Fri FEB 16 8pm (FRC2)  
Sat FEB 17 2pm (SAM)  
Sun FEB 18 2pm (SU1)

**Composer Salonen: *Wing on Wing***

As part of our celebration of Salonen the composer, we present the newly revised version of a work he originally composed for the opening of Walt Disney Concert Hall. Beethoven's towering concerto leads off.

Los Angeles Philharmonic Esa-Pekka Salonen, conductor Vilde Frang, violin Kiera Duffy, soprano So Young Park, soprano	BEETHOVEN Violin Concerto MOZART Selections from <i>The Impresario</i> , K. 486 Esa-Pekka SALONEN <i>Wing on Wing</i>
---	--

**ORGAN RECITALS**  
Sun FEB 18 7:30pm (OR1)

**Peter Richard Conte in Recital**

Possessing nearly unparalleled technique, a brilliant ear for tonal color and an innovative programming style, Peter Richard Conte is highly regarded as an enthralling performer and an arranger of jaw-dropping transcriptions.

Peter Richard Conte, organ Andrew Ennis, flugelhorn and organ	program to include music by IVES, BERNSTEIN, PUCCINI, and SIBELIUS
--	---



Yo-Yo Ma



Yefim Bronfman

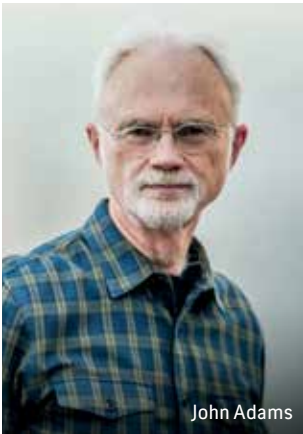


Esa-Pekka Salonen

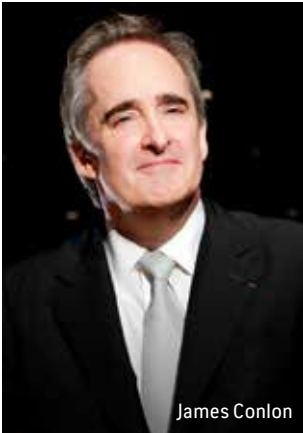


Peter Richard Conte





John Adams



James Conlon



James McVinnie



Daniil Trifonov

GREEN UMBRELLA  
Tue FEB 20 8pm (GU1)

Adams Conducts

Our Creative Chair leads an audacious program including nearly lost post-minimalist music by the late African-American provocateur composer Julius Eastman. Salvatore Martirano's best-known work – *L's G.A.* (Lincoln's Gettysburg Address) for gas-masked politico, helium bomb, two-channel tape recorder – is a bold piece with a powerful anti-war message. Also features premieres from Young and McIntosh.

LA Phil New Music Group John Adams, conductor	Katherine YOUNG new work for ensemble (world premiere, LA Phil commission) Andrew McINTOSH new work for ensemble (world premiere, LA Phil commission) EASTMAN <i>Evil N****r</i> MARTIRANO <i>L's G.A.</i>
--	---

ORCHESTRAL  
Fri FEB 23 8pm (FRC1)  
Sat FEB 24 8pm (SA1)  
Sun FEB 25 2pm (SU3)

Muhly & Mussorgsky

After Ravel's gentle, rippling tribute to the French Baroque, we will shake the rafters with Muhly's new Organ Concerto. Ravel's unparalleled orchestration of Mussorgsky's mighty suite of aural pictures will bring down any rafters left remaining.

Los Angeles Philharmonic James Conlon, conductor James McVinnie, organ	RAVEL <i>Le Tombeau de Couperin</i> (except Fri) Nico MUHLY Organ Concerto (world premiere, LA Phil commission) MUSSORGSKY (arr. Ravel) <i>Pictures at an Exhibition</i>
--	--

TOYOTA SYMPHONIES  
FOR YOUTH  
Sat FEB 24 11am (SY1)

Composer Salonen: *Wing on Wing*

Los Angeles Philharmonic

COLBURN CELEBRITY  
RECITALS  
Sun FEB 25 7:30pm (CE1)

Trifonov & Babayan

Already considered one of the world's most amazing pianists, Daniil Trifonov teams with multiple prize-winning Armenian-American pianist Sergei Babayan, whose students, including Trifonov, have won awards all over the world.

Daniil Trifonov, piano Sergei Babayan, piano	RACHMANINOFF Suites for Two Pianos Mauro LANZA new work for two pianos (world premiere, LA Phil commission) RAVEL <i>Rapsodie espagnole</i>
---	--

Wed FEB 28 8pm  
inSIGHT

The Oscar® Concert

As part of the Oscar® Week celebrations for its 90th Anniversary, the Academy of Motion Picture Arts and Sciences® teams with the LA Phil to present this year's nominated scores live in concert. Thomas Wilkins will lead a celebration of the fascinating history of film music, and the program will include suites and video from each nominated film.

Los Angeles Philharmonic  
Thomas Wilkins, conductor

ORCHESTRAL  
Fri MAR 2 8pm (FR2)  
Sat MAR 3 8pm (SA2)

YS PROJECT  
Great for the whole family, ages 6 and up.

A Trip to the Moon

A fresh new work from prize-winning composer Andrew Norman takes its inspiration from Georges Méliès' 1902 silent film version of a Jules Verne classic.

Los Angeles Philharmonic Teddy Abrams, conductor Yuval Sharon, director Los Angeles Master Chorale Grant Gershon, Artistic Director Los Angeles Children's Chorus Anne Tomlinson, Artistic Director	Andrew NORMAN <i>A Trip to the Moon</i> (U.S. premiere, LA Phil commission) HOLST <i>The Planets</i>
---	--

COLBURN CELEBRITY  
RECITALS  
Sun MAR 4 7:30pm (CE2)

Ma • Kavakos • Ax

Three of the most acclaimed artists in the world get together as a supergroup to share the richness within the three piano trios by Johannes Brahms.

Yo-Yo Ma, cello Leonidas Kavakos, violin Emanuel Ax, piano	BRAHMS Trio in C, Op. 87 Trio in C minor, Op. 101 Trio in B, Op. 8
--	--

BAROQUE  
Thu MAR 8 8pm (BV1)

Baroque Brass

Taking center stage, the Philharmonic's sensational brass players offer an invigorating evening of colorful music from the age of Gabrieli, Bach, and Handel.

Members of the Los Angeles Philharmonic program to be announced  
brass section



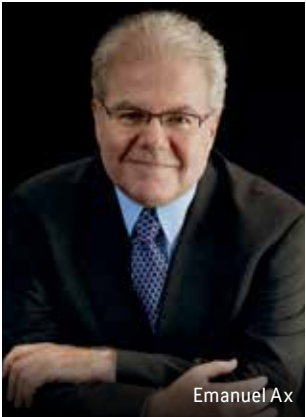
Thomas Wilkins



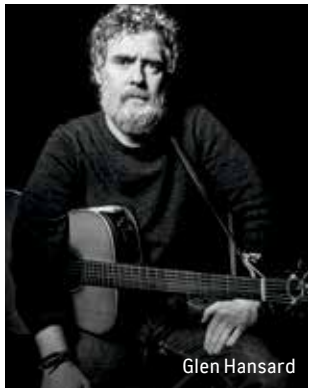
A Trip to the Moon



Leonidas Kavakos



Emanuel Ax



JAZZ

Fri MAR 9 8pm (JZ1)

John Beasley presents MONK'estra

Geri Allen presents The Erroll Garner Project: *Concert by the Sea*  
featuring Gerald Clayton, Christian Sands, Darek Oles, Victor Lewis, Russell Malone

The L.A.-based big band John Beasley presents MONK'estra celebrates the 100th birthday of legendary pianist Thelonious Monk with fresh new arrangements of Monk's unique compositions, along with clips of his performances. Closing the evening will be a homage to one of the most popular albums in jazz history, pianist Erroll Garner's *Concert by the Sea*. Today's most exciting jazz pianists, with an all-star rhythm section, will perform such classics as "April in Paris," "They Can't Take That Away from Me," "Autumn Leaves" and many more.

TOYOTA SYMPHONIES FOR YOUTH

Sat MAR 10 11am (SY2)

Composer Salonen: *Wing on Wing*

Los Angeles Philharmonic

WORLD MUSIC

Sat MAR 10 8pm (WM1)

Glen Hansard

Acclaimed singer-songwriter Glen Hansard (The Swell Season, The Frames) – focus of the Oscar®-winning film *Once* and its Tony Award®-winning musical adaptation – returns to Walt Disney Concert Hall for two performances of soul-stirring melodies and raw emotion. For Sunday's concert, Glen will be joined for a very special evening by the Los Angeles Philharmonic.

Glen Hansard  
Los Angeles Philharmonic (Mar 11)

COLBURN CELEBRITY RECITALS

Tue MAR 13 8pm (CE1)

Wed MAR 14 8pm (CE2)

Perlman & Argerich

Two living legends in joint recital – this is one for the record books!

Itzhak Perlman, violin	program to include:
Martha Argerich, piano	BACH Sonata for Keyboard and Violin, BWV 1017
	FRANCK Violin Sonata in A

ORCHESTRAL

Fri MAR 16 8pm (FR3)

Sat MAR 17 2pm (SAM)

Sun MAR 18 2pm (SUI)

Beethoven & Sibelius

Eminent Danish maestro Blomstedt has programmed a pair of beloved second symphonies (in the same key) that differ dramatically from one another, resulting in an unexpected and richly rewarding symbiosis.

Los Angeles Philharmonic	BEETHOVEN Symphony No. 2
Herbert Blomstedt, conductor	SIBELIUS Symphony No. 2

CHAMBER MUSIC

Tue MAR 20 8pm (CH1)

Chamber Music

Listening to music on an intimate level at our Chamber Music concerts is a great way to relax and restore.

members of the Los Angeles Philharmonic      program to be announced  
*preceded by a complimentary wine reception*

ORCHESTRAL

Thu MAR 22 8pm (TH1)

Sat MAR 24 8pm (SA3)

Sun MAR 25 2pm (SU3)

Bruch & Dvořák

Spotlighting two members of the LA Phil family – former Resident Conductor Bringuier and Principal Concertmaster Chalifour – this Romantic program includes Bruch's lyrical masterpiece. Its G-minor drama is followed by the sunny G major of Dvořák's exuberant Eighth Symphony.

Los Angeles Philharmonic	BRAHMS <i>Tragic Overture</i>
Lionel Bringuier, conductor	BRUCH Violin Concerto
Martin Chalifour, violin	DVOŘÁK Symphony No. 8

JAZZ

Fri MAR 23 8pm (JZ1)

Jazz at Lincoln Center Orchestra & Chick Corea

The ever-swinging Jazz at Lincoln Center Orchestra presents a new program with jazz titan Chick Corea. Sparks will fly as the orchestra performs Corea's gems, as well as swinging, soulful standards that will raise the roof!

Jazz at Lincoln Center Orchestra  
Chick Corea, keyboards

TOYOTA SYMPHONIES FOR YOUTH

Sat MAR 24 11am (SY1)

*Pictures at an Exhibition*

Los Angeles Philharmonic

SOUNDS ABOUT TOWN

Sun MAR 25 7:30pm

American Youth Symphony

American Youth Symphony      program to be announced  
Carlos Izcaray, conductor

VISITING ORCHESTRAS

Tue MAR 27 8pm

San Francisco Symphony

L.A. favorite Michael Tilson Thomas leads his brilliant orchestra in a power-packed, expressive program that sprang from the highly charged atmosphere of early 20th-century Vienna.

San Francisco Symphony	BERG Violin Concerto
Michael Tilson Thomas, conductor	MAHLER Symphony No. 5
Gil Shaham, violin	





SEASON CALENDAR

SEASON CALENDAR



Richard Goode

ORCHESTRAL

Thu MAR 29 8pm (TH2)  
Fri MAR 30 8pm (FR1)  
Sat MAR 31 8pm (SA1)

Richard Goode Plays Mozart

The incomparable Richard Goode joins us for the exquisite concerto to that Mozart composed for a young blind virtuoso named Maria Theresa Paradis. Then, Manze leads a rare performance of Vaughan Williams' vividly dramatic and expressive Sixth Symphony. Although VW wouldn't confirm that it was a reaction to the sufferings of WWII, it is clearly in a different world from his more pastoral achievements.

Los Angeles Philharmonic	BACEWICZ Overture
Andrew Manze, conductor	MOZART Piano Concerto No. 18, K. 456,
Richard Goode, piano	"Paradis"
	VAUGHAN WILLIAMS Symphony No. 6



Toyota Symphonies for Youth

TOYOTA SYMPHONIES  
FOR YOUTH

Sat MAR 31 11am (SY2)

Pictures at an Exhibition

Los Angeles Philharmonic

ORCHESTRAL

Thu APR 5 8pm (TH1)  
Fri APR 6 8pm (FR3)  
Sat APR 7 8pm (SA2)  
Sun APR 8 2pm\* (SU2)



YS  
PROJECT

\* no staging or video APR 8

Mahler's Song of the Earth

Mahler's penultimate completed work is unclassifiable – neither song cycle, symphony, nor operatic drama. His penetrating settings of ancient Chinese poems reveal a universe of experience within an individual, our relationship to nature, and the sometimes cruel, sometimes beautiful cycle of life. In an unprecedented move, three of these performances will be staged by our Artist-Collaborator Sharon in conjunction with TEATROCINEMA, a Chilean theater company renowned for innovative interaction between video and live performers.

Los Angeles Philharmonic	MAHLER <i>Das Lied von der Erde</i>
Gustavo Dudamel, conductor	
Yuval Sharon and Zagal, directors	
TEATROCINEMA	
Russell Thomas, tenor	
Tamara Mumford, mezzo-soprano	



Yuval Sharon

COLBURN CELEBRITY  
RECITALS

Sun APR 8 7:30pm (CE2)

Schiff in Recital

Schiff, an L.A. favorite for his spectacular recitals here, brings a program from the heart of his repertory that will be sure to enthrall any music lover.

Sir Andrés Schiff, piano	SCHUMANN Theme with Variations in E-flat, WoO 24, "Ghost Variations"
	BRAHMS Three Intermezzos, Op. 117
	MOZART Rondo in A minor, K. 511
	BRAHMS Six Pieces for Piano, Op. 118
	BACH Prelude and Fugue No. 24 in B minor, BWV 869 (from <i>The Well-Tempered Clavier</i> , Book 1)
	BRAHMS Four Pieces for Piano, Op. 119
	BEETHOVEN Piano Sonata No. 26 in E-flat, Op. 81a, "Les Adieux"



Andrés Schiff

ORCHESTRAL

Fri APR 13 11am (FRM)  
Sat APR 14 2pm (SAM)  
Sun APR 15 2pm (SU3)

Composer Salonen:  
Dudamel Conducts Salonen & Shostakovich

As part of *Composer Salonen*, his brand-new orchestral work will be conducted by Gustavo Dudamel. Shostakovich's most popular symphony will follow Varèse's musical vision of an imagined New York City.

Los Angeles Philharmonic	Esa-Pekka SALONEN new work
Gustavo Dudamel, conductor	for orchestra (world premiere, LA Phil commission)
	VARÈSE <i>Amériques</i>
	SHOSTAKOVICH Symphony No. 5



Esa-Pekka Salonen

GREEN UMBRELLA

Tue APR 17 8pm (GU1)



Dudamel Conducts Hearne World Premiere

In a country at a crossroads where the intersections of manifest destiny and gentrification meet history and personal experience, Hearne's *Place* explores the complex and contentious map of the place we call home.

*Produced in collaboration  
with Beth Morrison  
Projects*

Gustavo Dudamel, conductor	Ted HEARNE <i>Place</i> (world premiere, commissioned by the LA Phil, Barbican Centre and Beth Morrison Projects)
LA Phil New Music Group	
Patricia McGregor, director	
Saul Williams and Ted Hearne, co-librettists	



Gustavo Dudamel

ORCHESTRAL

Thu APR 19 8pm (TH2)  
Fri APR 20 8pm (FRC1)  
Sat APR 21 8pm (SA3)  
Sun APR 22 2pm (SUI)

Bernstein 100: Dudamel Conducts Beethoven 9

These two glorious works for orchestra with chorus just cry out to be concert mates, and music lovers will hardly be able to contain themselves. Dudamel's reputation for intensity and incisive detail makes this a definite don't-miss!

Los Angeles Philharmonic	BERNSTEIN <i>Chichester Psalms</i>
Gustavo Dudamel, conductor	(except Fri)
John Holiday, countertenor	BEETHOVEN Symphony No. 9
Julianna Di Giacomo, soprano	
Jennifer Johnson Cano, mezzo-soprano	
Michael König, tenor	
Davóne Tines, bass-baritone	
Los Angeles Master Choral	
Grant Gershon, Artistic Director	



Jennifer Johnson Cano



Davóne Tines

SOUNDS ABOUT TOWN

Sun APR 22 7pm

Colburn Orchestra

Colburn Orchestra

program to be announced

BAROQUE

Thu APR 26 8pm (BVI)

Les Violons du Roy

Using modern instruments, the much-recorded and highly acclaimed Canadian chamber orchestra and their founder present an immersive evening of incomparable music by Bach.

Les Violons du Roy

Bernard Labadie, conductor

Isabelle Faust, violin

Pascale Giguère, violin

All-BACH program:

Three Leipzig Chorales, BWV 651, 660, 655 [transc. Labadie]

Passacaglia and Fugue in C minor, BWV 582 [arr. Labadie]

Violin Concerto in E major, BWV 1042

Violin Concerto in A minor, BWV 1041

Contrapunctus XIV from *The Art of the Fugue*, BWV 1080 [completed by Bernard Labadie after Davitt Moroney]

Double Violin Concerto in D minor, BWV 1043

JAZZ

Fri APR 27 8pm (JZ1)

Crosscurrents: Zakir Hussain, Dave Holland, Chris Potter, Shankar Mahadevan

The Vijay Iyer Sextet

Bridging both directions of inspiration between jazz and the music of India, *Crosscurrents* is built on the foundational duo of renowned tabla virtuoso Zakir Hussain and brilliant bassist Dave Holland, joined for this performance by acclaimed sax player Chris Potter and superstar composer/vocalist Shankar Mahadevan. Innovative composer/pianist Vijay Iyer has already been *DownBeat*'s "Artist of the Year" three times. "[one of] today's most important pianists... extravagantly gifted... brilliantly eclectic" – *The New Yorker*

WORLD MUSIC

Sat APR 28 8pm (WM1)

Bajofondo

Argentine and Uruguayan collective Bajofondo returns to Walt Disney Concert Hall for the first time since its sold-out performance in 2010. The high-energy electro-rock-tango ensemble, fronted by Oscar®- and Grammy®-winning Gustavo Santaolalla, is known for its rousing live shows and modern reimagining of traditional Latin instrumentation.



Colburn Orchestra



Bernard Labadie



Vijay Iyer



Bajofondo

SONGBOOK

Sun APR 29 7:30pm (SB1)

Art Garfunkel

Spanning his solo hits from "All I Know" to "Bright Eyes," as well as such favorites as "The Sound of Silence" and "Bridge Over Troubled Water" from his legendary partnership with Paul Simon, Grammy®-winning singer and poet Art Garfunkel shares diamond-cut melodies from his half-century career in this evening of words and music.

COLBURN CELEBRITY RECITALS

Tue MAY 8 8pm (CE1)

Yuja Wang in Recital

Yuja Wang has ascended to the very heights of world's top keyboard virtuosos. In the intimacy of a solo recital, you can focus on every detail of her miraculous playing.

Yuja Wang, piano

ORCHESTRAL

Sat MAY 12 8pm (SA2)

Sun MAY 13 2pm (SU2)

Bruch & Tchaikovsky

Max Bruch's Concerto for Two Pianos is not widely known. In fact, its history is strange, even sad, but when you hear how touchingly beautiful it is, you will likely never forget it. Tchaikovsky's Second Symphony is built on memorable Ukrainian folk tunes.

Los Angeles Philharmonic

Semyon Bychkov, conductor

Katia and Marielle Labèque, pianos

SCHUBERT Fantasia in F minor

for Four Hands

BRUCH Concerto for Two Pianos

TCHAIKOVSKY Symphony No. 2, "Little Russian"

ORCHESTRAL

Thu MAY 17 8pm (TH1)

Fri MAY 18 8pm (FR2)

Sat MAY 19 8pm (SA1)

Sun MAY 20 2pm (SU3)

Schumann Cycle: Concert 1

Renowned for his symphony cycles, Gustavo now focuses on the pure-hearted music of Robert Schumann, one of the greatest composers of the Romantic era despite his many travails.

Mitsuko Uchida, acknowledged as one of the foremost Schumann interpreters, joins us for Schumann's only Piano Concerto.

Los Angeles Philharmonic

Gustavo Dudamel, conductor

Mitsuko Uchida, piano

SCHUMANN Piano Concerto

Symphony No. 1, "Spring" (Thu/Fri)

Symphony No. 2 (Sat/Sun)



Art Garfunkel



Yuja Wang



Katia and Marielle Labèque



Mitsuko Uchida



ORGAN RECITALS

Sun MAY 20 7:30pm (ORI)

Hector Olivera in Recital

Beginning years ago as a child prodigy in Buenos Aires, Hector Olivera now commands the finest organs on the world stage. Acclaimed for his prodigious technical proficiency and the uncanny effect he has on his audience, Olivera makes a welcome return to Walt Disney Concert Hall.

CHAMBER MUSIC

Tue MAY 22 8pm (CH2)

All-Schumann

In conjunction with Dudamel's Schumann Cycle, we present examples of the composer's glorious chamber music.

members of the Los Angeles Philharmonic program to be announced  
*preceded by a complimentary wine reception*

ORCHESTRAL

Thu MAY 24 8pm (TH2)  
Fri MAY 25 11am (FRM)  
Sat MAY 26 2pm (SAM)  
Sun MAY 27 2pm (SU2)

Schumann Cycle: Concert 2

Dudamel continues his Schumann Cycle with the final two symphonies – lilting, soaring and majestic – and the wonderful Cello Concerto, with the equally wonderful Sol Gabetta as soloist.

Los Angeles Philharmonic	SCHUMANN <i>Genoveva</i> Overture
Gustavo Dudamel, conductor	Cello Concerto
Sol Gabetta, cello	Symphony No. 3, "Rhenish" (Thu/Fri)
	Symphony No. 4 (Sat/Sun)

ORCHESTRAL

Fri JUN 1 8pm (FRC2)  
Sat JUN 2 8pm (SA2)  
Sun JUN 3 2pm (SUI)



Schumann Cycle: Concert 3

To conclude his Schumann survey, Dudamel teams with Peter Sellars for the rarely performed oratorio on Thomas Moore's poem about a *peri* – a fairy-like spirit somewhere between an angel and a devil – who is trying to re-enter heaven by finding the gift that God will like best.

Los Angeles Philharmonic	SCHUMANN <i>Das Paradies und die Peri</i>
Gustavo Dudamel, conductor	
Peter Sellars, director	
Refik Anadol, video artist	
Lucy Crowe, <i>peri</i>	
Joshua Stewart, narrator	
Ying Fang, young maiden	
Tamara Mumford, angel	
Davóne Tines, old man	
Los Angeles Master Chorale	
Grant Gershon, Artistic Director	



Sol Gabetta



Lucy Crowe



Gustavo Dudamel



Peter Sellars

BURT HARA + UNION STATION



# THE NEXT GENERATION

## TRANSFORMING LIVES THROUGH YOLA

The work of the LA Phil doesn't stop when the orchestra leaves the stage. We actively contribute to building the next generation of musicians and music lovers.

Through a variety of Education and Community Engagement programs, the LA Phil brings the joy of music into the lives of more than 150,000 children and families annually.

The heart of our efforts, Youth Orchestra L.A. (YOLA), provides free after-school music instruction, performance opportunities, and academic support to children who would not otherwise have access.

"When I play in an orchestra, it's the most incredible feeling ever. It's you and your colleagues coming together to make awesome music. And, it's just that – you're not worried about tomorrow's dinner, you're not worried about tonight's homework. It's literally you just focused on every note you're playing and telling a story."

*YOLA alumna Juliana, the next generation*

Class of 2020 at San Francisco Conservatory, viola performance major

SAMANTHA AND JULIANA,  
YOLA ALUMNAE, JAPAN TOUR  
MARCH 2015

# SUPPORT THE LA PHIL

## Make a gift. Make a difference.

Ticket sales cover only a portion of the costs associated with providing the wide array of performances and educational programs the LA Phil offers each year.

Your support today helps to ensure that the LA Phil remains a vital orchestra and a treasured community resource for generations to come.

We are pleased to offer benefits that will enhance your concert-going experience and bring you even closer to the heart of the orchestra.

Join us in making extraordinary music today.

For more information, visit [LAPhil.com/Give](http://LAPhil.com/Give) or call 213.972.7557.

We are grateful to our generous sponsors and partners in the community.





Los Angeles Philharmonic Association  
151 South Grand Avenue  
Los Angeles, CA 90012-3034

Non-Profit  
Organization  
U.S. Postage  
PAID  
Mercury Mailing  
Systems, Inc.

**SUBSCRIBE  
TODAY**

**LAPhil.com  
323.850.2000**

**2017—2018  
SEASON**

**WALT DISNEY  
CONCERT HALL**

 **LA PHIL**  
GUSTAVO DUJAMEL  
Music & Artistic Director