

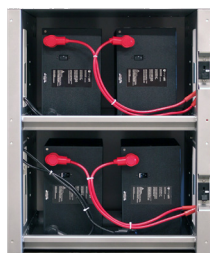


Integrated Battery Rack

Comprehensive Battery Enclosure Solution with Cell Interconnect



IBR-3-48-175

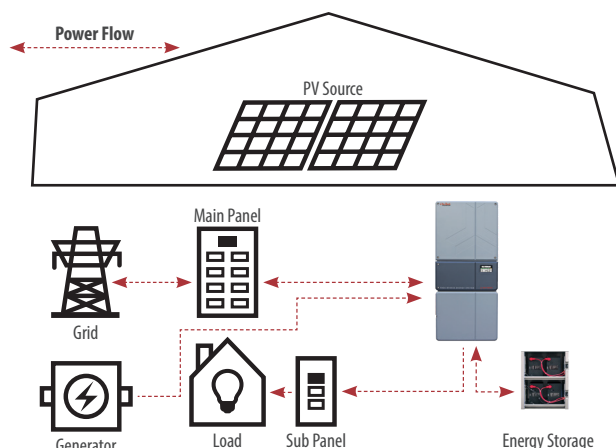


IBR-2-48-175-Li

Features:

- Ideal for use with OutBack Radian, FLEXpower and FLEXcoupled systems
- Fast installation
- Supports multiple 48V strings of OutBack EnergyCell and lithium ion batteries
- Overcurrent protection on each battery string provides added safety and flexibility
- Well-ventilated for increased battery safety and longevity
- Protective terminal covers
- Space-saving design with smaller footprint

Typical System Integration



Our line of pre-assembled battery racks are designed to meet the needs of system integrators and installers and provide the best of both worlds.

The innovative OutBack Integrated Battery Rack system is *a comprehensive battery enclosure which includes all cell interconnects, cabling, and series string over current protection and disconnects*. All electrical connections are made at the factory and ship fully assembled with the exception of the batteries, which can be quickly added and connected on the job site, making the Integrated Battery Rack uniquely easy to specify, order and install.

Unlike typical steel racks or sheet-metal enclosures, the OutBack design is crafted of powder coated aluminum, resulting in a cleaner appearance *able to withstand the most challenging environments– while weighing less than 90 pounds*. The 2-shelf IBR-2 is sized to fit under an OutBack Radian inverter/charger to reduce system component “clutter” and make the best use of installation space. Clear covers on the racks permit visual inspection of internal components while providing additional protection for the batteries and electrical connections.

| Models: | IBR-2-48-175 | IBR-3-48-175 |
|--------------------------------|---|--|
| Dimensions H x W x D (in/cm) | 33 x 27 x 24.5 / 83.8 x 68.6 x 62.2 | 48.6 x 27 x 24.5 / 123.4 x 68.6 x 62.2 |
| Weight w/out Batteries (lb/kg) | 60 / 27 | 89 / 40.4 |
| Physical Characteristics | 0.125-inch thick aluminum enclosure with FLEXware silver finish; plated copper bus bars and clear protective covers. Ships fully assembled (except for batteries) | |
| String Overcurrent Protection | 175ADC | 175ADC |
| Gauge of Conductors | 1/0 AWG | 1/0 AWG |
| Capacity | Up to 8 EnergyCell batteries | Up to 12 EnergyCell batteries |
| Nominal System Voltage | 48VDC | 48VDC |
| Supported Batteries* | EnergyCell 200PLR, EnergyCell 200PLC, EnergyCell 200NC and more | |

| Models: | IBR-2-48-175-LI | IBR-3-48-175-LI |
|--------------------------------|---|--|
| Dimensions H x W x D (in/cm) | 33 x 27 x 24.5 / 83.8 x 68.6 x 62.2 | 48.6 x 27 x 24.5 / 123.4 x 68.6 x 62.2 |
| Weight w/out Batteries (lb/kg) | 60 / 27 | 89 / 40.4 |
| Physical Characteristics | 0.125-inch thick aluminum enclosure with FLEXware silver finish; plated copper bus bars and clear protective covers. Ships fully assembled (except for batteries) | |
| String Overcurrent Protection | 175ADC | 175ADC |
| Gauge of Conductors | 4 AWG, 1/0 AWG | 4 AWG, 1/0 AWG |
| Capacity | Up to 4 48V lithium ion batteries | Up to 6 48V lithium ion batteries |
| Nominal System Voltage | 48VDC | 48VDC |
| Supported Batteries* | Simpliphi and more | |

*Batteries are sold separately