

## 1969 Volkswagen Karmann Ghia



This VW ran and drove with some other issues of note. No video was available for this report. On the exterior I noted there are minor misc scratches around the vehicle. Most too small to see in photos. In noted imperfections in the paint such as wrinkles and overspray. The seller states they painted the vehicle. There's a large hole in the front boot / spare tire compartment where you can see the rust covering the inside of the body. The underside has been undercoated. The undercoating can hide rust. The underside shows areas of rust. See pictures. The reverse light are not installed. There are wires hanging out of the back of the vehicle for reverse light connection. I checked the vehicle with a magnet and found it to stick all around but was weaker in the lower panels. Not excessive.

Inside I noted working aftermarket seat belts. The seller stated that the speakers are not connected yet. The radio does power up. Window reel handles rub up against the inner door panels. As noted, there is a large hole in the boot/spare tire compartment. There was no smoke or odd odors inside.

The engine is leaking from every place that an engine can leak. It was not dripping during inspection but the seller stated that it does drip. There is a breached ball joint in the steering assembly. There's also a clicking noise when turning the wheel left.

The vehicle wanders while driving on the road. This is due to loose steering components. Other than that, I found no issues on the test drive. The engine had plenty of power and there were no misfires or smoking. The transmission shifted as designed with no harsh engagement or slipping. There were no abnormal vibrations or odd noises. The brakes were firm with no pulsation felt.

See below and pictures for more info.

Vehicle Info	
Year - 1969	
Make - Volkswagen	
Model - Karmann Ghia	
Mileage - 34994	
Transmission - Manual	
VIN Number - 148203192	
Interior - Leather	
Interior Color - Black	
Body Color - Blue	
Engine - 4 Cylinder	
Drive Type - Rear Wheel Drive	
Fuel Type - Gas	

Exterior	
Wiper Blades	✓
Windshield Washer	✓
Body Alignment	✓
Scratches	✗
There are minor misc scratches around the vehicle. Most too small to see in photos.	
Dings	✓
Dents	✓
Paint Condition	✗
In noted imperfections in the paint such as wrinkles and overspray.	
Body Seals	✓
Rust	✗
There's a large hole in the front boot / spare tire compartment where you can see the rust covering the inside of the body. The underside has been undercoated. The undercoating can hide rust. The underside shows areas of rust. See pictures.	
Exterior Lights	✗
The reverse light are not installed. There are wires hanging out of the back of the vehicle for reverse light connection.	
Door Mirrors	✓
Side Moldings	✓
Frame Damage	✓
Glass	✓
Body Filler?	✗
I checked the vehicle with a magnet and found it to stick all around but was weaker in the lower panels. Not excessive.	
Hood	✓
Doors	✓
Floors	✓
Rockers	✓
Quarter Panels	✓
Chrome	✓


Interior
----------

Mechanical	
Air Filter	✓
Battery Condition	✓
Charging System	✓
Hoses	✓
Belts	✓
Engine Oil	✓
Engine Fluid Leaks	✗
The engine is leaking from every place that an engine can leak. It was not dripping during inspection but the seller stated that it does drip.	
Brake System	✓
Brake Fluid Leaks	✓
Differential leaks	✓
Muffler System	✓
CV Joints and Axles	✓
Shocks and bushings	✓
Ball Joints and Tie Rods	✗
There is a breached ball joint in the steering assembly. There's also a clicking noise when turning the wheel left.	
Modifications	✓

Road Test	
Road Test	✓
Engine Performance	✓
Transmission performance	✓
Clutch Performance	✓
Differential Performance	✓
Wheel Bearing Performance	✓
Braking Performance	✓
Suspension Performance	✓
Steering Performance	✗
The vehicle wanders while driving on the road. This is due to loose steering components.	
Engine Starting	✓
TIRES/WHEELS	
Spare Tire	✓
Tire Manufacturer	
Driver's Front - Kumho	
Passenger's Front - Kumho	
Driver's Rear - Kumho	
Passenger's Rear - Kumho	
Tire Size	
Driver's Front - 165/80r15	
Passenger's Front - 165/80r15	
Driver's Rear - 165/80r15	
Passenger's Rear - 165/80r15	
Tire Condition	
Driver's Front - No Issues	

Steering Wheel	✓
Horn	✓
Seat Condition	✓
Seat Belts	✗
I noted working aftermarket seat belts.	
Clock	✓
Radio/Navigation	✗
The seller stated that the speakers are not connected yet. The radio does power up.	
Inner Door Panels	✓
Window Function	✗
Window reel handles rub up against the inner door panels.	
Center Console	✓
Dash	✓
Sun Visors	✓
Dash Lights	✓
Dash Gauges	✓
Heater	✓
Rear Defroster	✓
Floor Mats	✓
Cigarette Use	✓
Unusual Odors	✓
Cup Holders	✓
Headliner	✓
Blower Motor	✓
Interior Trim	✓
Inner Trunk	✗
There is a large hole in the boot/spare tire compartment.	

Passenger's Front - No Issues
Driver's Rear - No Issues
Passenger's Rear - No Issues
Wheel Condition
Driver's Front - No Issues
Passenger's Front - No Issues
Driver's Rear - No Issues
Passenger's Rear - No Issues
Tire Tread
Driver's Front - 8/32
Passenger's Front - 8/32
Driver's Rear - 8/32
Passenger's Rear - 8/32



10/32 OR MORE

Tires have plenty of tread!  
(standard)

8/32 OR MORE

Tires have plenty of tread!  
(low profile)

5/32 TO 7/32

Tires will need replacement soon!

4/32 OR LESS

Tires need replacement!



1

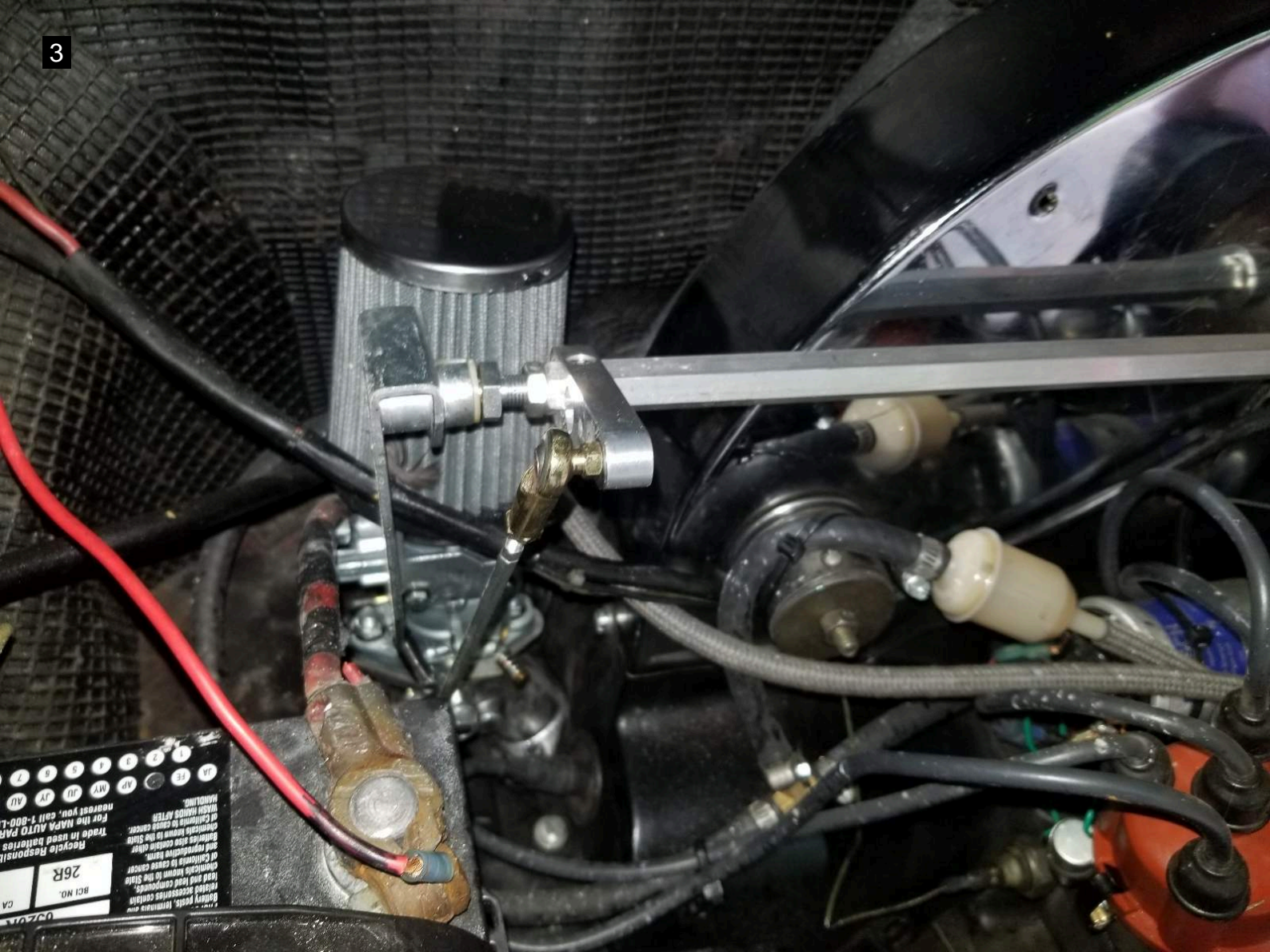




2







Recycle Responsibly  
For the NAPA AUTO PARTS  
nearest you, call 1-800-L-  
NAPA.

26R  
BATTERY NO. 26R  
CA

1 2 3 4 5 6 7 8 9 10 11 12  
AP HY BU JY AU









































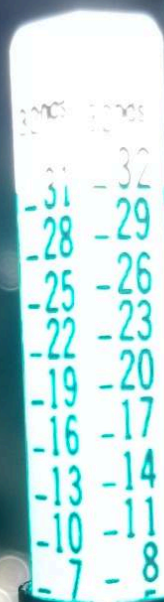


















87T

165/80R15































































































































•148203192•









STATE OF WASHINGTON  
**Vehicle Certificate of Title**

Title Number

**1534126003**

License Number	Vehicle Identification Number (VIN)	Year	Make	Model	Style	Series/Body
<b>56755CV</b>	<b>148203192</b>	<b>1968</b>	<b>VW</b>			<b>KARGHIA</b>
Date of Application	Odometer Miles	Odometer Status		Fuel Type		
<b>12/07/2015</b>	<b>0000000</b>	<b>E</b>		<b>G</b>		
Scale Weight	Gross Vehicle Weight Rating Code	Vehicle Color		Prior Title State		Prior Title Number
<b>01852</b>				<b>CA</b>		
Comments						
<b>11000-2015</b>						

Brands

**WA20151207Classic**

Sale price \$ \_\_\_\_\_

Date of sale \_\_\_\_\_

**Legal Owner:** To release interest, sign below and give this title to the registered owner/transferee or to a vehicle licensing office with the proper fee within 10 days of satisfaction of the security interest, or you may be liable to the owner/transferee for penalties.

**Buyer:** You must apply for title within 15 calendar days of acquiring the vehicle to avoid a penalty. Take this signed title to a vehicle/vessel licensing office with the appropriate fees.





STATE OF

**Vehicle Certificate**

License Number

5CV

Type of Application

1/2015

Gross Weight

Vehicle Identification Number (VIN)

148203192

Odometer Miles

00000000

Gross Vehicle Weight Rating

























































































Reifendruck  
Nutzlast / pay  
vorn / fro  
hinten / re  
Autobahn













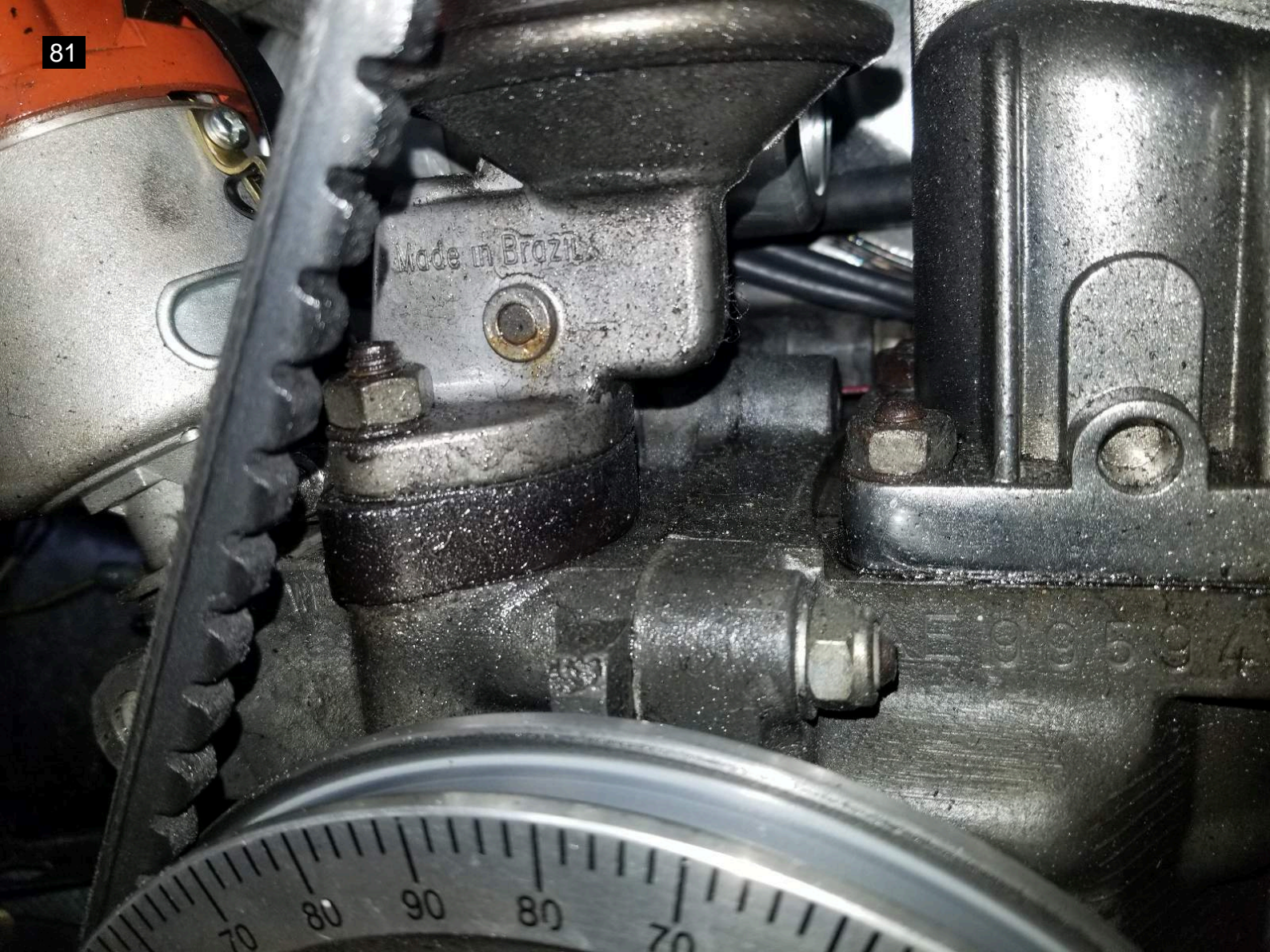


















































VOLKSWAGENWERK AG  
MADE IN GERMANY

Typ 14

Heizg. Typ 1/255 A Prüfz. ... 543

Fahrgest.-Nr. 148 203132

Zul.-Gesamtlsgew. kg 1200

Zul.-Achslast vorn kg 500 hinten kg 710



