

Sample Submittal Form

(Please fill out before returning kit)

Date: _____ Coupon code / Voucher number:

Name: _____

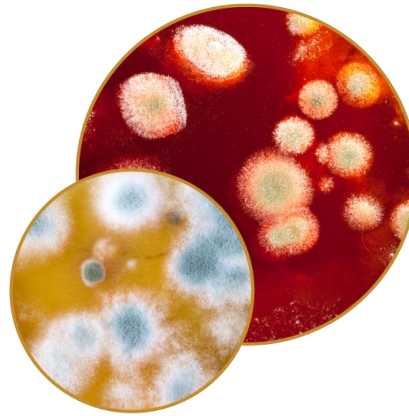
Cell Phone: _____ (we'll send a text when samples arrive and when to expect results)

Address: _____

Email address: _____

Sample number & location description (kitchen, ceiling, etc.) | **pump start time** | **pump stop time**

1.	_____	_____	_____
2.	_____	_____	_____
3.	_____	_____	_____



Kit contents:

Pump, clear tubing, sample collection cassettes, return shipping label.

Pump # _____ was calibrated on _____

Your kit was packed and checked by: _____

Moldlab, Ltd.

Airborne Mold Spore Test Kit

moldlab

Providing services to both professionals and homeowners since 2000.

Toll free: 1-866-416-MOLD

Air Sampling Instructions

What you need before you start:

The contents of the kit, a watch/timer, a pen and about 45 minutes total (or 10 minutes per test location)

1. Fill out form on back side of this pamphlet.
2. Peel stickers off both ends of 1st cassette. Using a pen, write a number and location on the side of cassette, and write the same info on the form located on back of this pamphlet.

For example: # 1 / Outside

**** Please take an Outdoor sample. Exterior baseline sample is crucial for your comparison data chart.*
3. Connect tubing to circular opening on one end of cassette where you removed sticker.
4. Connect un-used end of tubing to the pump.
5. Get your watch or timer ready.
6. Plug pump into standard outlet.
7. Write start time on form
8. Start pump and timer. (verify flow of 15 L on meter, adjust if necessary with black knob)
9. Run pump for 10 minutes.

*Continued from page 1.

10. After 10 minutes, turn off pump, record stop time, remove cassette from tubing, replace stickers on both ends, unplug pump from outlet and prepare to move to next test location.

Sample #1 is COMPLETE.

11. Move kit contents to next test area. Remove next un-used cassette from bag and repeat steps 2-11 for each area to be tested.

Watch our helpful "how to" video at:

<https://www.moldlab.com/homeowners-mold/>

You're Done!

Discard clear tubing, it does not need to be returned to lab.

Repack pump, your air collection cassettes and this pamphlet. Return to Moldlab, Ltd at the address below using the shipping method of your choice.

Samples Receiving
2501 Mayes Road STE 110
Carrollton, TX 75006

***** Prompt return is expected, as your kit needs to be recalibrated and shipped to the next client. If the kit is not received back at Moldlab within 14 days or return post mark dated by date on the green sticker on outside of box, your credit card will be charged a \$45 per day equipment rental fee.**



What a typical air sample looks like as viewed by the technician during analysis.

You will receive email and text notifications when we receive your kit in the lab.

Your lab results report will be emailed 3 business days after we receive the returned kit.

Results will only be issued or discussed with the individual(s) listed on the form on the reverse side. Please list all email addresses, phone numbers, and individuals you want to have access to your results.

Moldlab, Ltd.	
2501 Mayes Road, Suite #110	
Carrollton, Texas 75006	
Phone: 1-866-416-MOLD(6653)	
website: www.moldlab.com	
Email: info@moldlab.com	