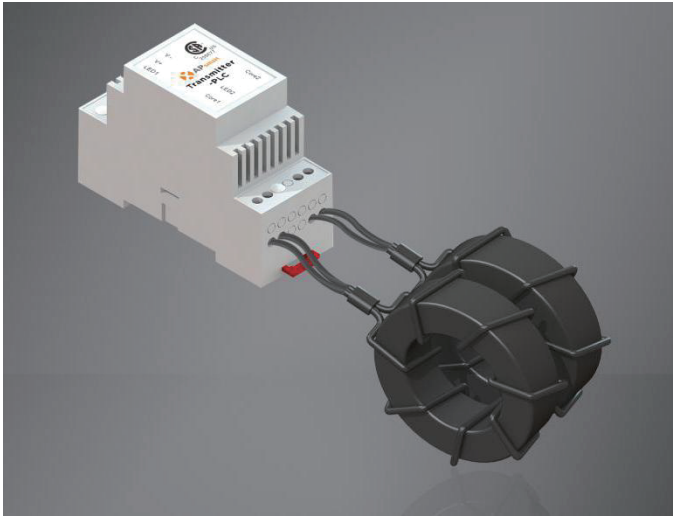


Raising the bar in innovative DC MLPE solar power systems

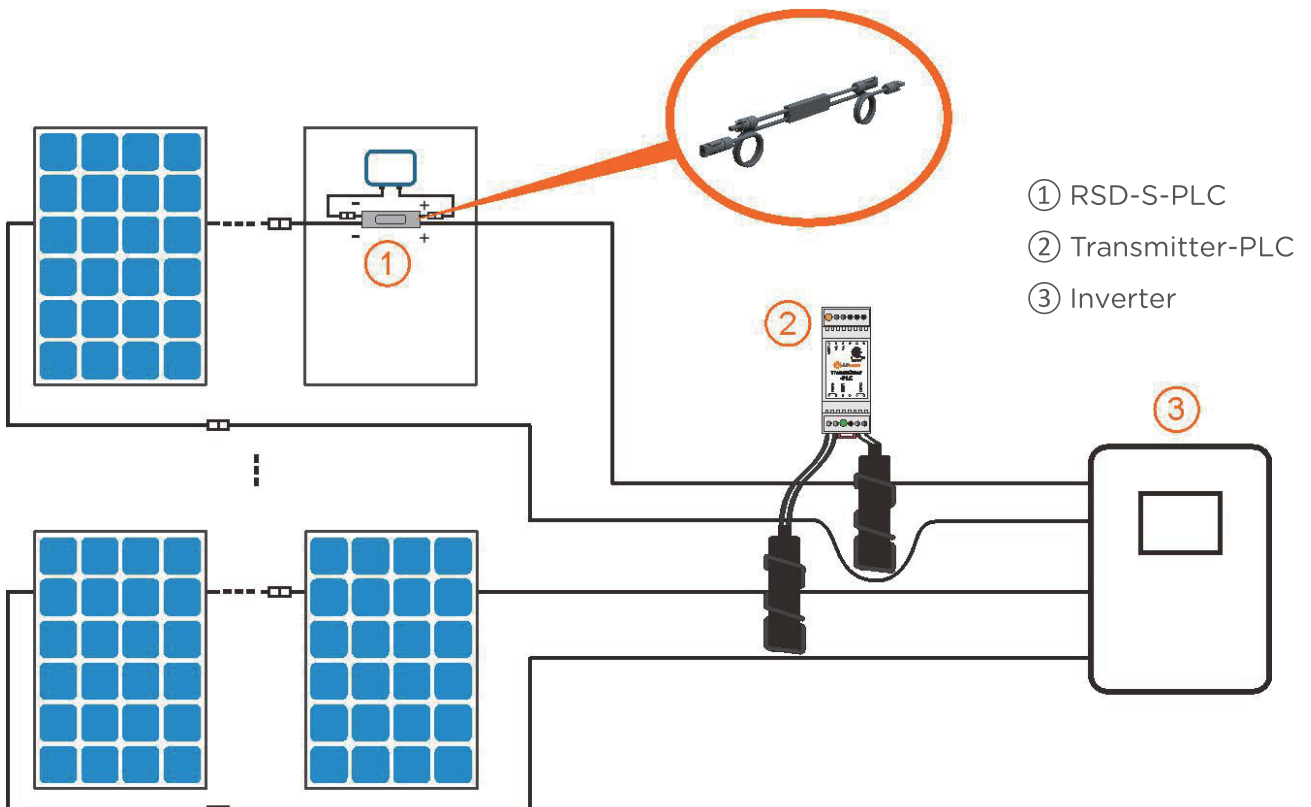


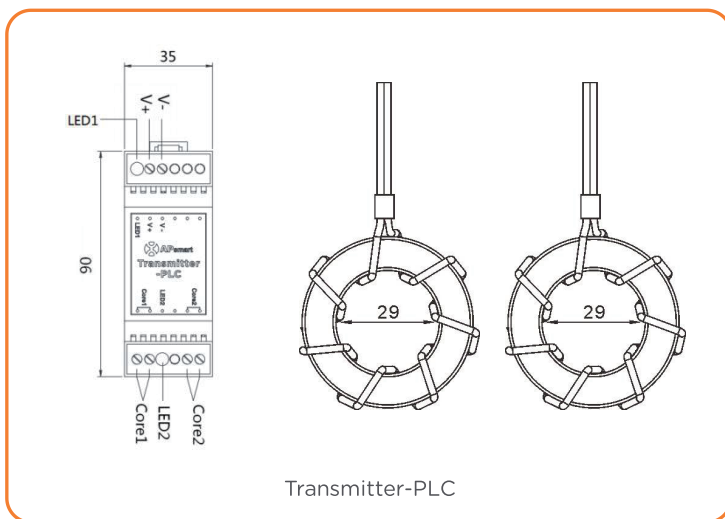
TRANSMITTER-PLC

- Meets NEC 2017 (690.12) requirements
- Provides heartbeat signal to RSD. Signal stops when AC power is absent
- Meets SunSpec requirements
- Equipped with single/dual core
- Optional 120/240VAC power supply
- Optional 480/277VAC power supply

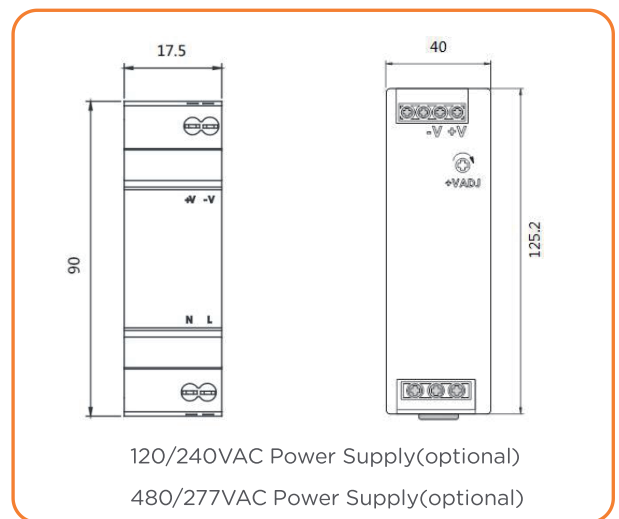
The APsystems Rapid Shutdown System (RSS) Transmitter-PLC is part of a rapid shutdown solution when paired with APsystems RSD-S-PLC, a PV module rapid shutdown unit. While powered on, the RSS Transmitter sends a signal to the RSD-S-PLC units to keep their PV modules connected and supplying energy.

RSD-S-PLC units automatically enter rapid shutdown mode when the RSS Transmitter-PLC is switched off and resume energy production when power is restored to the RSS Transmitter. This solution complies with NEC 690.12 specifications for 2017 and supports the SunSpec signaling for rapid shutdown.





Transmitter-PLC



120/240VAC Power Supply(optional)
480/277VAC Power Supply(optional)

Main electrical data

Input Voltage	12 VDC
Input Current	1A
Communication	PLC

Power Supply

Residential (optional)	85-264VAC Input, 12VDC Output, 90mm x 17.5mm x 58.4 mm
Commercial (optional)	200-500VAC Input, 12VDC Output, 125.2mm x 40mm x 113.5mm

Core data

Max. Current	300A (150AX2)
Max. System Voltage	1500VDC
Internal Opening For Wires	29mm
Max. Number Of Strings	10x2
Max. Supported PV Modules per String	30 modules

Environmental

Temperature	-40°C to +85°C
-------------	----------------

Structure data

Dimensions (W x H x D)	90mm x 35mm x 62mm
Enclosure Environmental Rating	IP30

Features & Compliance

Safety Compliance	NEC 2017 (690.12); UL1741; CSA C22.2 No.330-17
EMC Compliance	FCC Part15; ICES-003

ORDERING OPTIONS

406000	Dual Core Transmitter-PLC (no power supply)
406001	Single Core Transmitter-PLC (no power supply)
902000	120/240VAC Power Supply
903000	480/277VAC Power Supply



19925 Stevens Creek Blvd, Suite 100, Cupertino, CA 95014
+1 737-218-8486 | info@APsmartGlobal.com | APsmartGlobal.com

