



ANNUAL MEETING OF SHAREHOLDERS - JUNE 2024

SEABRIDGE GOLD

Unparalleled leverage in emerging gold and copper bull markets.

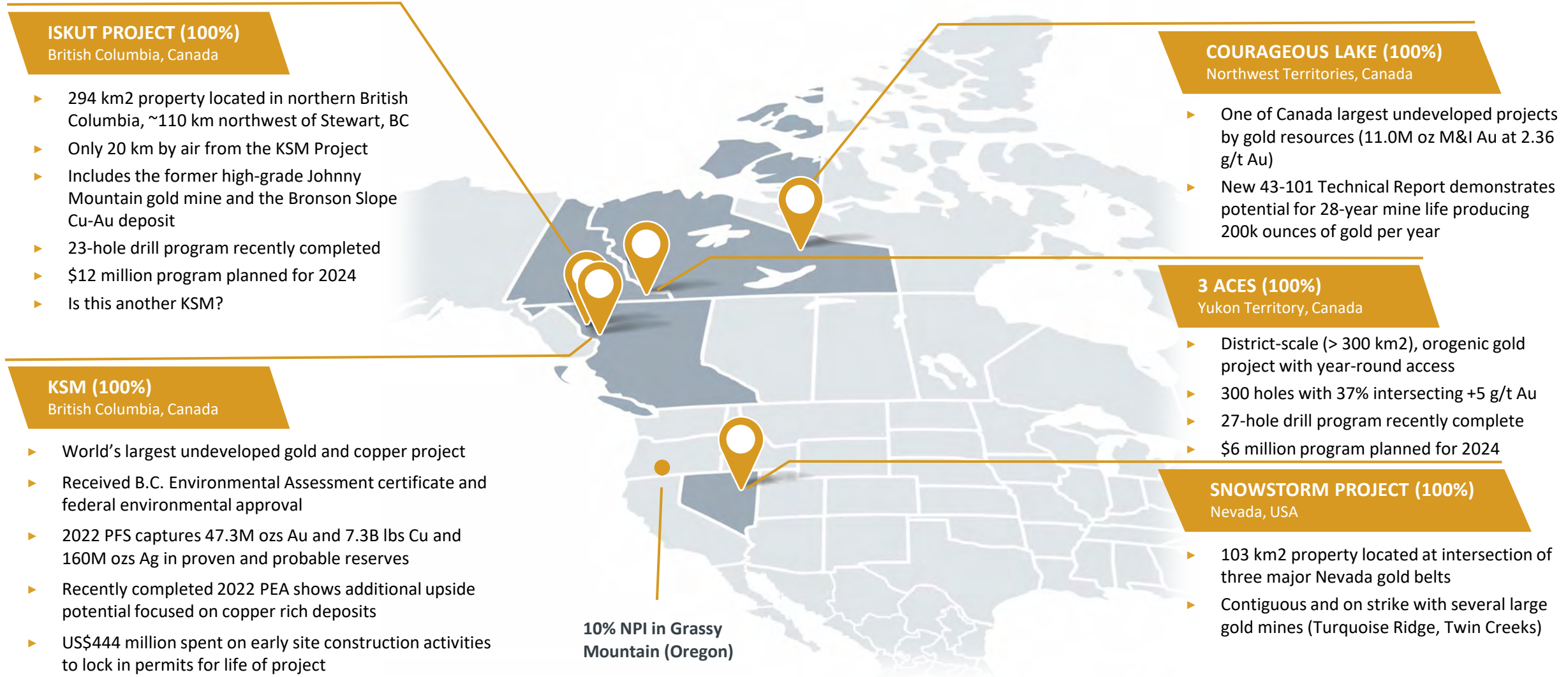
FORWARD LOOKING STATEMENTS

All reserve and resource estimates reported by the Company were calculated in accordance with the Canadian National Instrument 43-101 and the Canadian Institute of Mining and Metallurgy Classification system. These standards differ significantly from the requirements of the U.S. Securities and Exchange Commission. Mineral resources which are not mineral reserves do not have demonstrated economic viability.

Statements relating to the estimated or expected future production and operating results and costs and financial condition of Seabridge, planned work at the Company's projects and the expected results of such work are forward-looking statements within the meaning of the United States Private Securities Litigation Reform Act of 1995. Forward-looking statements are statements that are not historical facts and are generally, but not always, identified by words such as the following: expects, plans, anticipates, believes, intends, estimates, projects, assumes, potential and similar expressions. Forward-looking statements also include reference to events or conditions that will, would, may, could or should occur. Information concerning exploration results and mineral reserve and resource estimates may also be deemed to be forward-looking statements, as it constitutes a prediction of what might be found to be present when and if a project is actually developed. These forward-looking statements are necessarily based upon a number of estimates and assumptions that, while considered reasonable at the time they are made, are inherently subject to a variety of risks and uncertainties which could cause actual events or results to differ materially from those reflected in the forward-looking statements, including, without limitation: uncertainties related to raising sufficient financing to fund the planned work in a timely manner and on acceptable terms; changes in planned work resulting from logistical, technical or other factors; the possibility that results of work will not fulfill projections/expectations and realize the perceived potential of the Company's projects; uncertainties involved in the interpretation of drilling results and other tests and the estimation of gold reserves and resources; risk of accidents, equipment breakdowns and labour disputes or other unanticipated difficulties or interruptions; the possibility of environmental issues at the Company's projects; the possibility of cost overruns or unanticipated expenses in work programs; the need to obtain permits and comply with environmental laws and regulations and other government requirements; fluctuations in the price of gold and other risks and uncertainties, including those described in the Company's Annual Information Form filed with SEDAR in Canada (available at www.sedar.com) for the year ended December 31, 2023 and in the Company's Annual Report Form 40-F filed with the U.S. Securities and Exchange Commission on EDGAR (available at www.sec.gov/edgar.shtml).

Forward-looking statements are based on the beliefs, estimates and opinions of the Company's management or its independent professional consultants on the date the statements are made.

LARGE NORTH AMERICAN PORTFOLIO OF PREMIER GOLD PROJECTS



ISKUT PROJECT (100%)

British Columbia, Canada

- ▶ 294 km² property located in northern British Columbia, ~110 km northwest of Stewart, BC
- ▶ Only 20 km by air from the KSM Project
- ▶ Includes the former high-grade Johnny Mountain gold mine and the Bronson Slope Cu-Au deposit
- ▶ 23-hole drill program recently completed
- ▶ \$12 million program planned for 2024
- ▶ Is this another KSM?

KSM (100%)

British Columbia, Canada

- ▶ World's largest undeveloped gold and copper project
- ▶ Received B.C. Environmental Assessment certificate and federal environmental approval
- ▶ 2022 PFS captures 47.3M ozs Au and 7.3B lbs Cu and 160M ozs Ag in proven and probable reserves
- ▶ Recently completed 2022 PEA shows additional upside potential focused on copper rich deposits
- ▶ US\$444 million spent on early site construction activities to lock in permits for life of project

COURAGEOUS LAKE (100%)

Northwest Territories, Canada

- ▶ One of Canada largest undeveloped projects by gold resources (11.0M oz M&I Au at 2.36 g/t Au)
- ▶ New 43-101 Technical Report demonstrates potential for 28-year mine life producing 200k ounces of gold per year

3 ACES (100%)

Yukon Territory, Canada

- ▶ District-scale (> 300 km²), orogenic gold project with year-round access
- ▶ 300 holes with 37% intersecting +5 g/t Au
- ▶ 27-hole drill program recently complete
- ▶ \$6 million program planned for 2024

SNOWSTORM PROJECT (100%)

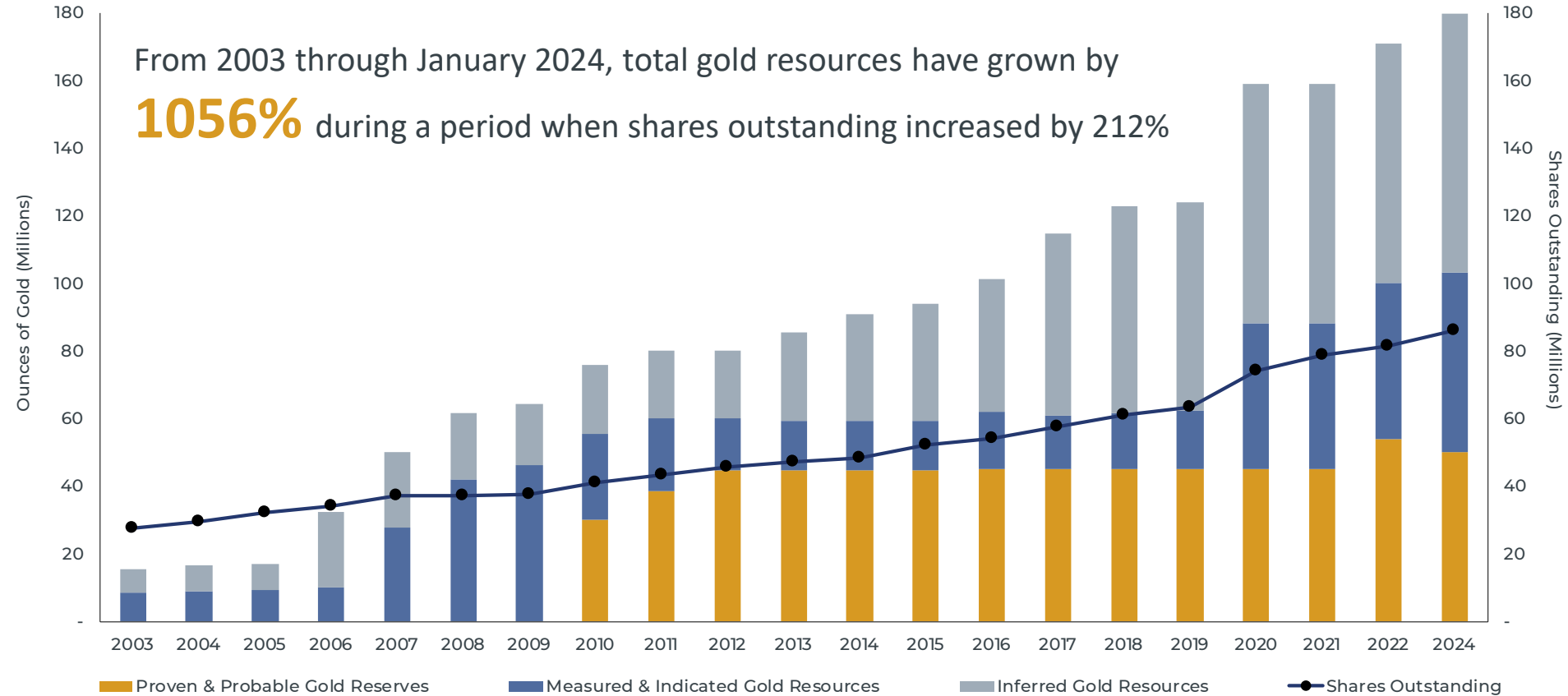
Nevada, USA

- ▶ 103 km² property located at intersection of three major Nevada gold belts
- ▶ Contiguous and on strike with several large gold mines (Turquoise Ridge, Twin Creeks)

10% NPI in Grassy Mountain (Oregon)

SHARE DILUTION MATTERS

- ▶ Our objective is to grow ounces in the ground faster than shares outstanding



Source: Company data

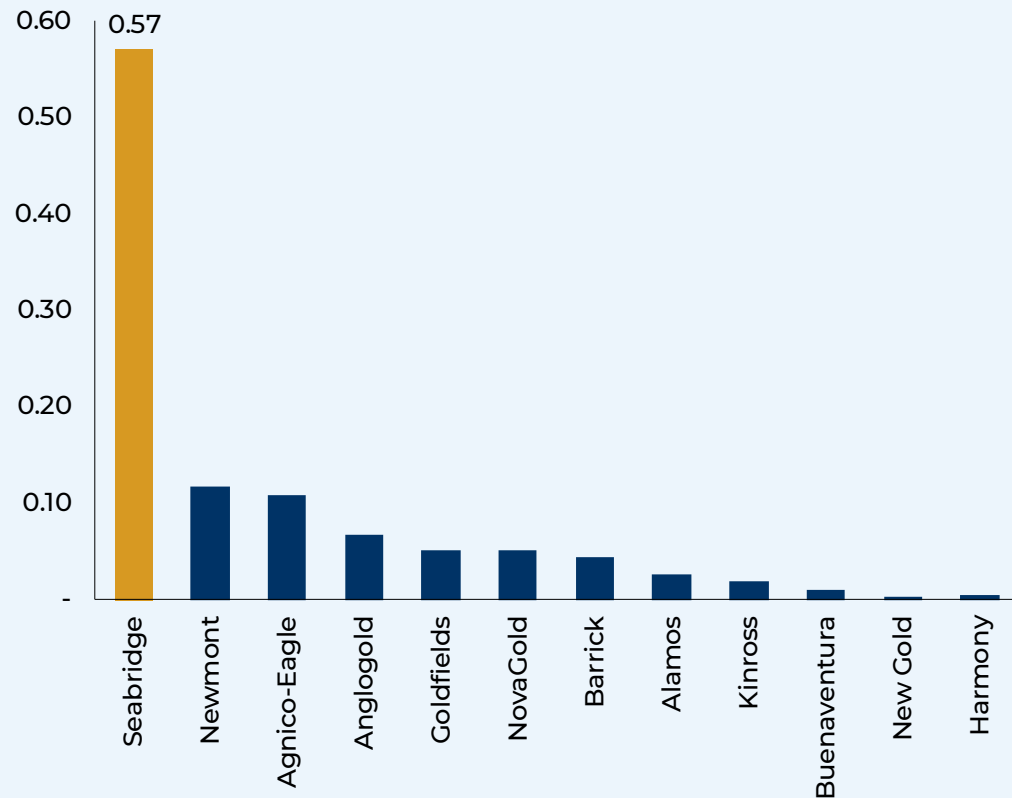
Note: For a breakdown of Seabridge's mineral reserves and resources by project, tonnes and grade, please visit <http://seabridgegold.com>



SUPERIOR LEVERAGE TO GOLD

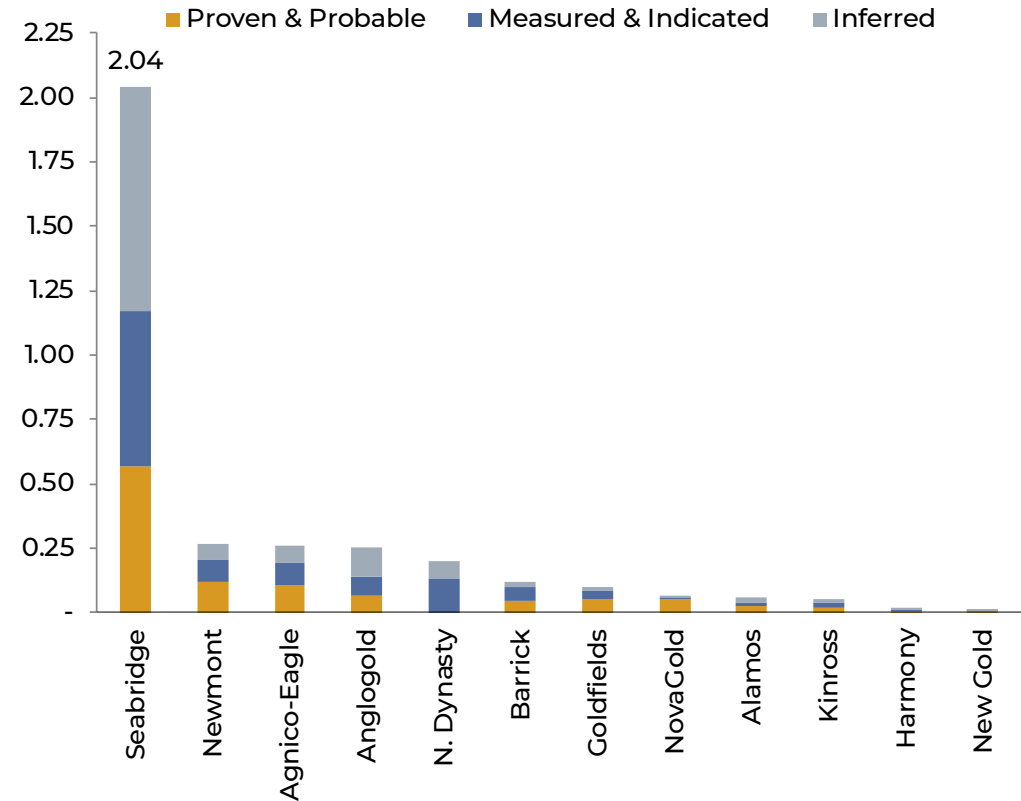
- ▶ Seabridge ranks 1st in gold reserves/share among North American listed gold companies

GOLD RESERVES (OUNCES) PER COMMON SHARE



- ▶ Seabridge ranks 1st in gold resources/share among North American listed gold companies

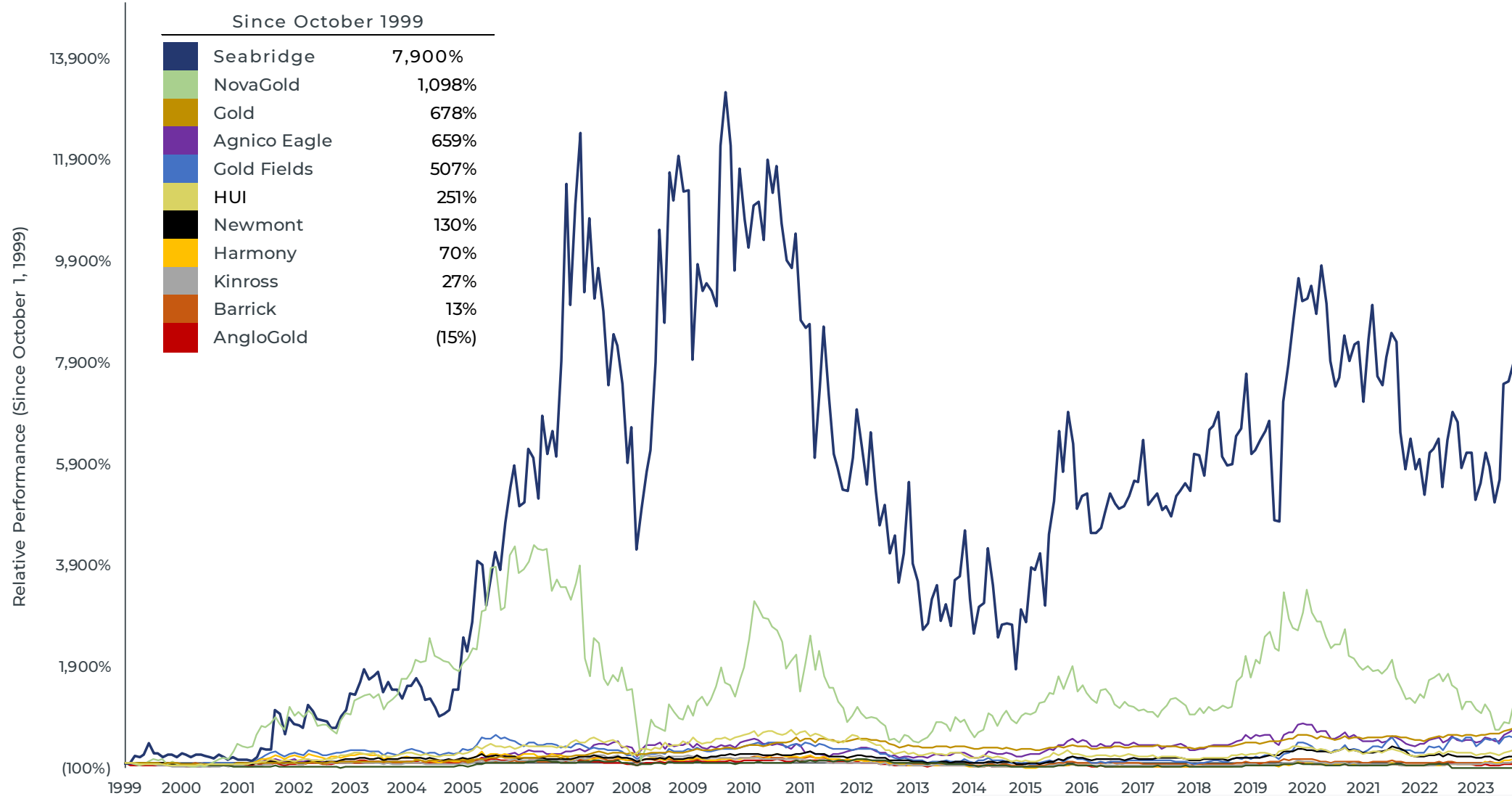
GOLD RESOURCES (OUNCES) PER COMMON SHARE



Source: Company data. Data as of May 31, 2024

Note: Companies shown include North America's largest gold companies and selected gold project development companies

IN A RISING GOLD MARKET, SEABRIDGE IS A STOCK TO OWN



Source: Company data. As of May 31, 2024

SHRINKING SHAREHOLDER VALUE

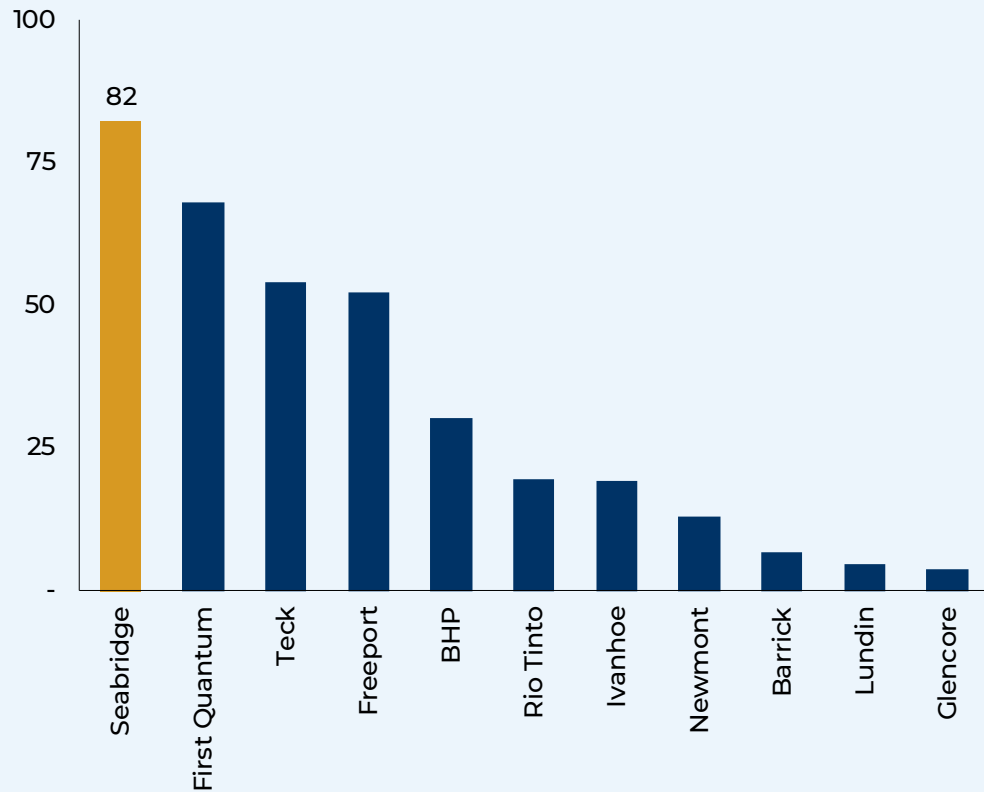
	2007	YE 2023	Change
Barrick:			
Shares Outstanding (M)	840	1,778	112%
Annual Production (M ozs)	8.1	4.0	(51%)
Reserves (M ozs)	125	77	(38%)
Production per share (ozs)	0.010	0.002	(77%)
Reserves per share (ozs)	0.149	0.043	(71%)
Newmont:			
Shares Outstanding (M)	436	1,150	164%
Annual Production (M ozs)	6.2	5.5	(11%)
Reserves (M ozs)	86	136	58%
Production per share (ozs)	0.014	0.005	(66%)
Reserves per share (ozs)	0.197	0.118	(40%)
Kinross Gold:			
Shares Outstanding (M)	612	1,228	101%
Annual Production (M ozs)	1.5	2.2	44%
Reserves (M ozs)	46.6	23	(51%)
Production per share (ozs)	0.002	0.002	(28%)
Reserves per share (ozs)	0.076	0.019	(76%)
Agnico Eagle:			
Shares Outstanding (M)	142	497	249%
Annual Production (M ozs)	0.2	3.4	1,389%
Reserves (M ozs)	16.7	54	222%
Production per share (ozs)	0.002	0.007	326%
Reserves per share (ozs)	0.117	0.108	(8%)

Source: Company data

SUPERIOR LEVERAGE TO COPPER

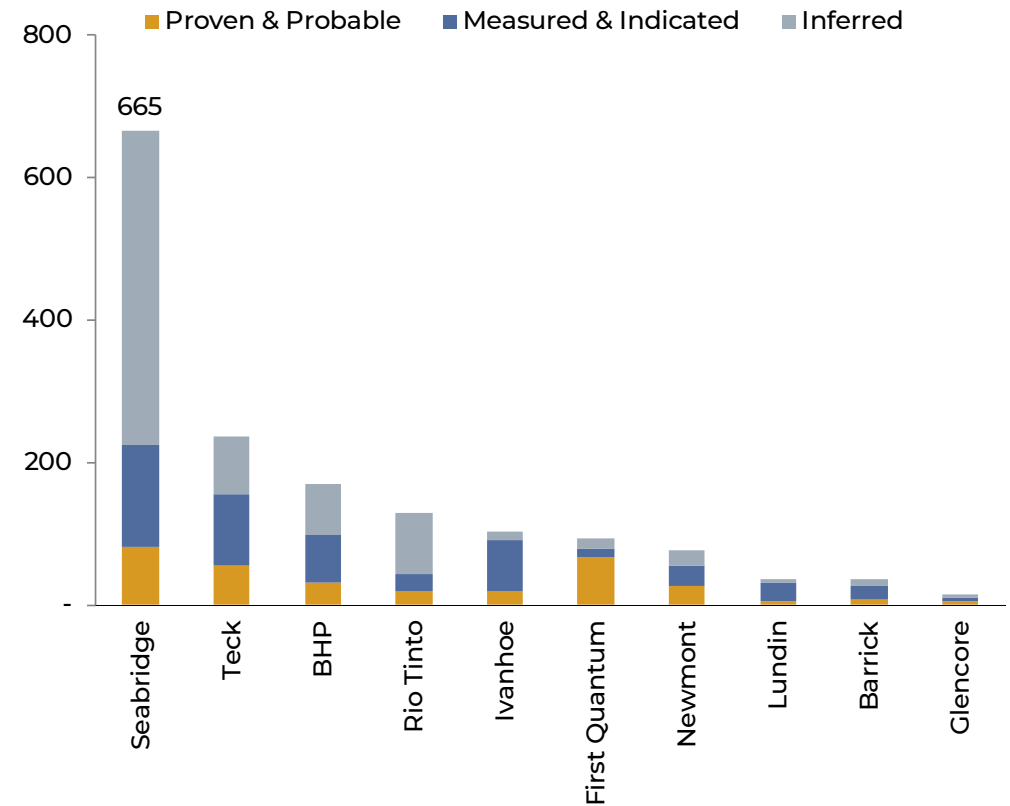
- ▶ Seabridge ranks 1st in copper reserves/share among major listed copper/gold companies

COPPER RESERVES (POUNDS) PER COMMON SHARE



- ▶ Seabridge ranks 1st in copper resources/share among major listed copper/gold companies

COPPER RESOURCES (POUNDS) PER COMMON SHARE



Source: Company data. Data as of May 31, 2024

Note: In addition to Seabridge, companies shown include North America's largest copper and gold/copper producing companies



KSM PROJECT

British Columbia, Canada

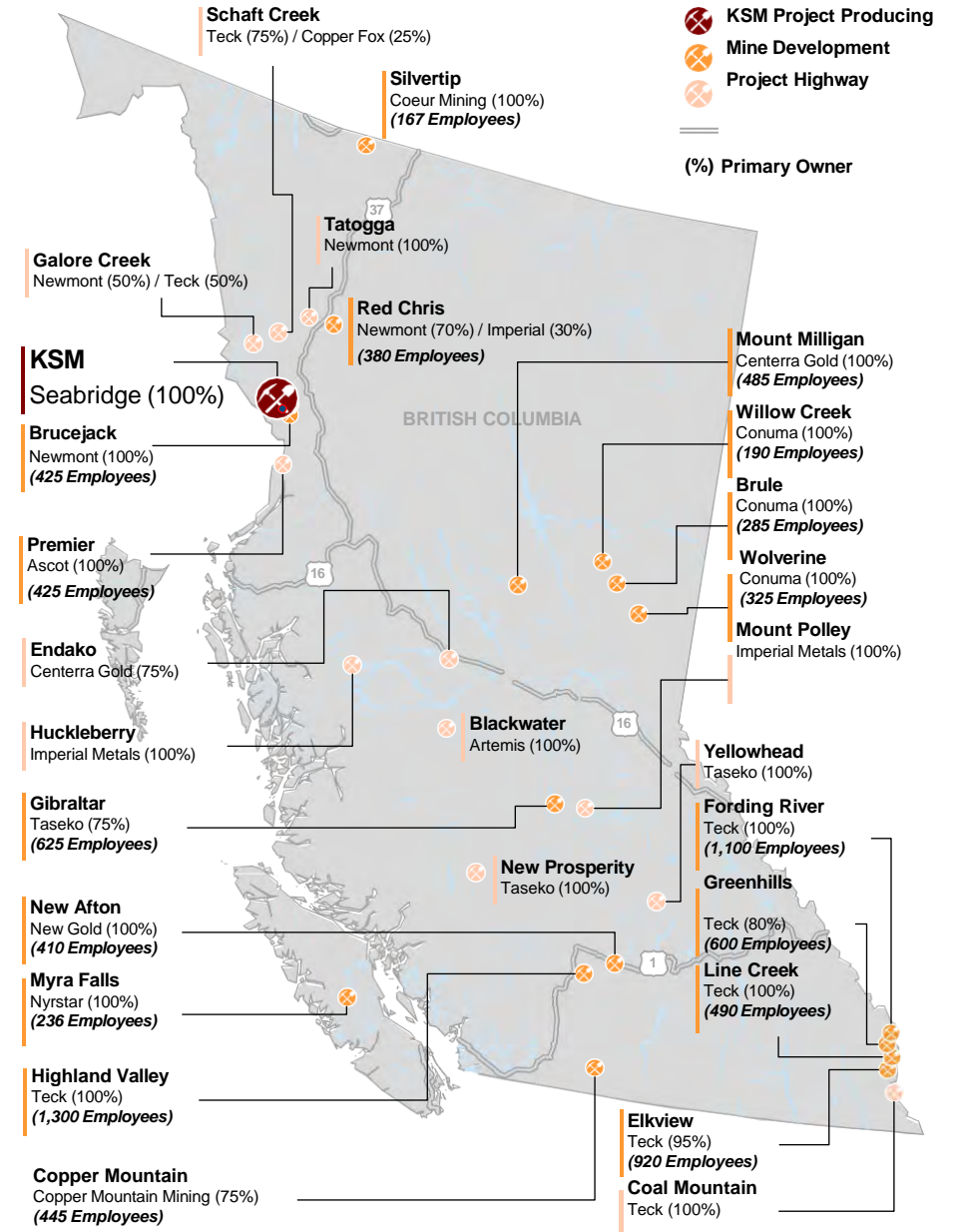
KSM:

A RARE, WORLD-CLASS PROJECT IN A TOP MINING JURISDICTION

- ▶ World’s largest undeveloped gold/copper project by gold and copper resources
- ▶ 2022 PFS demonstrates a more sustainable and more profitable mining operation than its 2016 predecessor
- ▶ Located in mining-friendly British Columbia near existing and past producers
 - ▶ Adjacent to established infrastructure
 - ▶ Access to regional workforce and supplies
 - ▶ Established procedures for obtaining permits

ENVIRONMENTAL AND SOCIAL APPROVALS

- ▶ B.C. Environmental Assessment certificate issued July 2014
- ▶ Federal Environmental approval received December 2014
- ▶ Established social license with local communities
 - ▶ Signed Impact Benefit Agreements with Nisga’a and Tahltan Nations
 - ▶ Letters of support received from Terrace, Smithers and the Gitxsan Nation
 - ▶ Non opposition agreement with Gitanyow Nation



SIGNIFICANT REGIONAL & LOCAL INFRASTRUCTURE

- ▶ Northwest Transmission Line completed in 2014
- ▶ 30 km between powerline to KSM process plant
- ▶ Paved Highway 37 allows efficient transport to and from port and mine – in use to support Brucejack and Red Chris
- ▶ Two nearby ports at Stewart B.C.
- ▶ Two nearby regional airports and a local airstrip
- ▶ Recent federal and provincial government additional funding to complete bringing fiber-optic communications to the Tahltan Territory



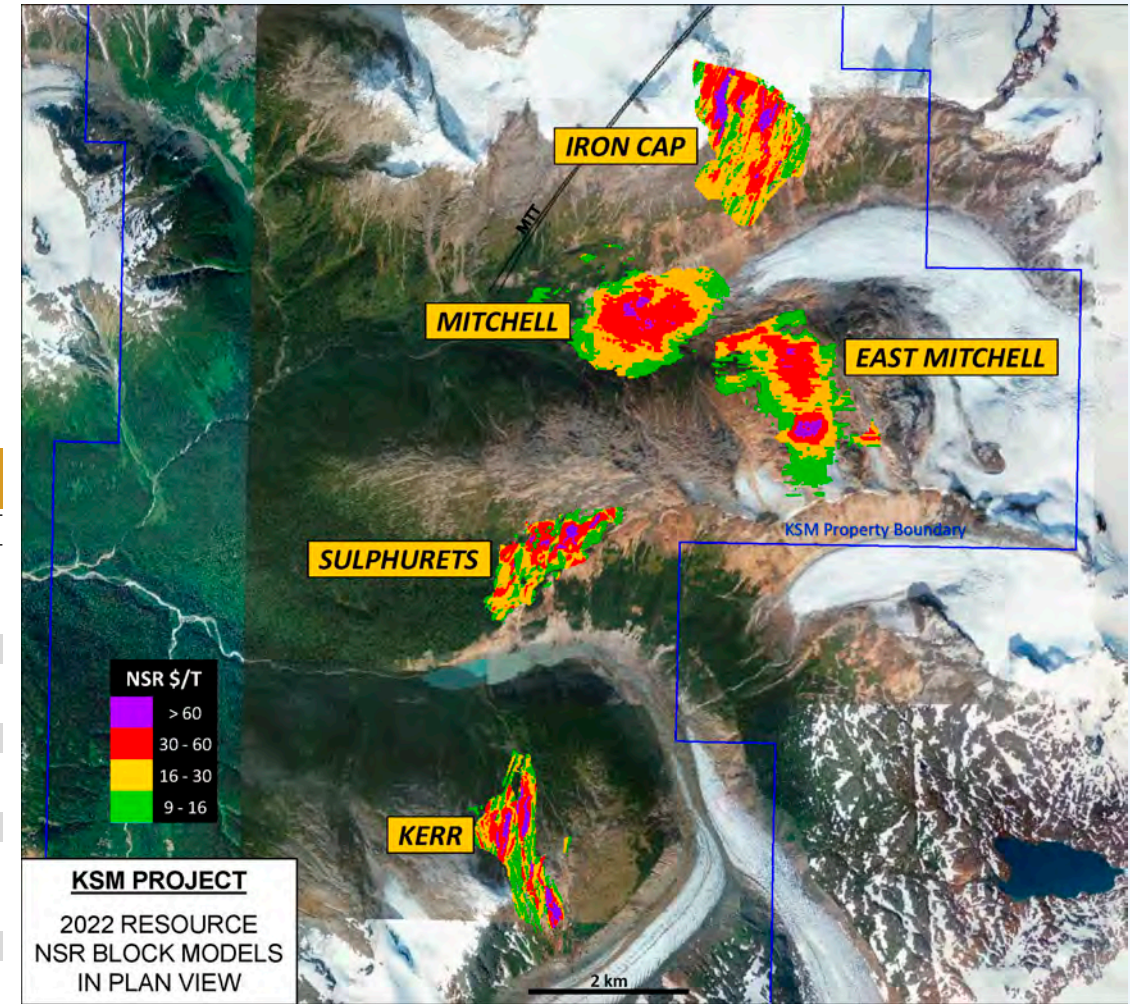
MULTI-GENERATIONAL DISTRICT POTENTIAL

- ▶ Mine plans focused on highest grade and most economic portions of deposits
- ▶ Current PFS mine plan captures less than 1/4 of total mineral resources and does not include Kerr or Iron Cap deposits
- ▶ 63% of reserves are classified as Proven

MINERAL RESERVES & MINERAL RESOURCES

		M tonnes	g/t Au	% Cu	g/t Ag	ppm Mo	M oz Au	M lbs Cu	M oz Ag	M lbs Mo
Mitchell	P&P	935	0.67	0.18	2.9	61	20.1	3,619	87	127
	M&I	2,359	0.54	0.15	2.9	62	41.1	7,996	222	320
	Inferred	1,283	0.29	0.14	2.5	47	11.8	3,832	102	133
	Subtotal	3,642	0.45	0.15	2.8	56	52.9	11,828	324	453
Iron Cap	M&I	471	0.38	0.21	4.3	39	5.8	2,206	66	40
	Inferred	2,309	0.41	0.27	2.5	31	30.3	13,755	186	160
	Subtotal	2,780	0.40	0.26	2.8	32	36.1	15,961	252	200
Kerr	M&I	384	0.22	0.41	1.2	5	2.7	3,456	14	4
	Inferred	2,589	0.27	0.35	1.7	21	22.8	19,852	142	120
	Subtotal	2,973	0.26	0.36	1.6	19	25.5	23,308	156	124
Sulphurets	P&P	151	0.68	0.26	1.0	70	3.3	874	5	23
	M&I	446	0.55	0.21	1.0	53	7.9	2,064	14	52
	Inferred	223	0.44	0.13	1.3	30	3.2	639	9	15
	Subtotal	669	0.51	0.18	1.1	45	11.0	2,703	24	67
East Mitchell	P&P	1,206	0.62	0.10	1.8	89	23.9	2,827	68	236
	M&I	1,759	0.55	0.10	1.8	85	31.2	3,904	101	328
	Inferred	281	0.37	0.07	2.3	61	3.4	403	21	38
	Subtotal	2,040	0.53	0.10	1.9	81	34.6	4,307	122	366
All	P&P	2,292	0.64	0.14	2.2	76	47.3	7,320	160	385
	M&I	5,419	0.51	0.16	2.4	63	88.7	19,626	417	744
	Inferred	6,685	0.33	0.26	2.1	31	71.5	38,481	461	466

Note: M&I resources are inclusive of reserves
 Mineral Resources were estimated by Wood Plc under the direction of Henry Kim P.Ge.
 Mineral Reserve were estimated by Moose Mountain Technical Services under the direction of Jim Gray P.Eng.



Note: blue lines indicate KSM property boundaries following announced transaction to acquire 100% of the Snowfield deposit now renamed East Mitchell property

12 Billion tonnes including East Mitchell (Snowfield)

2022 PRELIMINARY FEASIBILITY STUDY (PFS)

- ▶ Proven and probable reserves total 47.3 million ounces of gold, 7.3 billion pounds of copper and 160 million ounces of silver
- ▶ Reserves calculated using US\$1300 gold, US\$3.00 copper and US\$20 silver
- ▶ All reserves derived from open pit only (Mitchell, East Mitchell and Sulphurets)
- ▶ Life-of-mine strip ratio of 1:1
- ▶ Mine plan limited to permitted tailings capacity (2.3 billion tonnes), just 21% of known resource
- ▶ 33-year initial mine life averaging 1.0 million ounces of gold production per year, 178 million pounds of copper and 3 million ounces of silver
- ▶ Removal of capital-intensive block caves reduces total project capital costs from previous capital estimates
- ▶ Payback period estimated at 10% of mine life
- ▶ Optionality to bring additional copper production forward in mine plan by adding Iron Cap and/or Kerr deposits

	Unit	Base Case 2022 PFS	Recent Spot Case
Input Prices:			
Gold	US\$/oz	\$1,742	\$2,200
Copper	US\$/lb	\$3.53	\$4.00
Silver	US\$/oz	\$18.00	\$25.00
US\$/C\$ Exchange Rate		0.77	0.74
Proven and Probable Reserves:			
Tonnes	M tonnes	2,292	2,292
Gold	M oz	47.3	47.3
Copper	B lbs	7.3	7.3
Silver	M oz	160	160
Designed Throughput	000 TPD	195	195
Mine Life	Years	33	33
Average Annual Production (Years 1-7):			
Gold	000 oz	1,413	1,413
Copper	M lbs	250	250
Silver	M oz	3.8	3.8
Average Annual Production (LOM):			
Gold	000 oz	1,027	1,027
Copper	M lbs	178	178
Silver	M oz	3.0	3.0
Initial Capital Costs	US\$B	\$6.4	\$6.2
Sustaining Capital Costs	US\$B	\$3.2	\$3.1
Total LOM Capital Costs	US\$B	\$9.6	\$9.3
LOM Unit Operating Costs	US\$/T to Mill	\$11.36	\$12.40
Cash Op Costs (net of by-products)	US\$/oz Au	\$275	\$187
All-In Total Costs (net of by-products)	US\$/oz Au	\$601	\$500
After Tax Cash Flow	US\$B	\$23.9	\$35.9
After-Tax NPV _{5%}	US\$B	\$7.9	\$12.7
After-Tax IRR	%	16.1	21.0
Payback Period	years	3.7	3.0

2022 PRELIMINARY ECONOMIC ASSESSMENT (PEA)

- ▶ PEA based on mining copper rich block caves at Kerr and Iron Cap deposits which were not included in 2022 PFS
- ▶ Depending on preference of gold versus copper, block caves could be moved forward in KSM mine life
- ▶ 39-year PEA mill feed of 1.7 billion tonnes contains 16 billion pounds of copper, 23.2 million ounces of gold and 122 million ounces of silver
- ▶ Base Case operating cost estimated at US\$0.38 per pound of copper produced after gold, silver and molybdenum credits
- ▶ Base Case total cost (including all capital) estimated at US\$1.44 per pound of copper produced after gold, silver and molybdenum credits
- ▶ Initial capital of US\$1.5 billion to be funded from end-of-life 2022 PFS cash flows
- ▶ Sustaining capital of US\$12.8 billion to be funded from 2022 PEA cash flows
- ▶ 39-year PEA mine plan at Base Case pricing results in estimated:
 - ▶ Total after tax net cash flow of US\$18.5 billion
 - ▶ After tax NPV_{5%} of US\$5.8 billion
 - ▶ After tax IRR of 18.9%
- ▶ Tremendous leverage to higher copper and gold prices

	Unit	Base Case 2022 PEA	Recent Spot Case
Input Prices:			
Gold	US\$/oz	\$1,742	\$2,200
Copper	US\$/lb	\$3.53	\$4.00
Silver	US\$/oz	\$21.90	\$25.00
US\$/C\$ Exchange Rate		0.77	0.74
Mined Material:			
Tonnes	M tonnes	1,690	1,690
Gold	M oz	23.2	23.2
Copper	B lbs	16.0	16.0
Silver	M oz	122	122
Designed Throughput	000 TPD	170	170
Mine Life	Years	39	39
Average Annual Production (LOM):			
Gold	000 oz	368	368
Copper	M lbs	366	366
Silver	M oz	1.8	1.8
Initial Capital Costs	US\$B	\$1.5	\$1.4
Sustaining Capital Costs	US\$B	\$12.8	\$12.3
Total LOM Capital Costs	US\$B	\$14.3	\$13.7
LOM Unit Operating Costs	US\$/T to Mill	\$11.98	\$11.55
Cash Op Costs (net of by-products)	US\$/Lb Cu	\$0.38	-\$0.09
All-In Total Costs (net of by-products)	US\$/Lb Cu	\$1.44	\$0.92
After Tax Cash Flow	US\$B	\$18.5	\$27.4
After-Tax NPV _{5%}	US\$B	\$5.8	\$9.2
After-Tax IRR	%	18.9	25.9
Payback Period	years	6.2	4.2

KSM SUBSTANTIALLY STARTED DESIGNATION

- To extend KSM's EA approvals for the life of the project, KSM must be "substantially started" by July 2026
- Since early site construction commenced in 2021, Seabridge has spent \$444 million on substantially started activities with a significant portion of the spend to First Nation related companies
- Work focused on roads, bridges, camps, fish compensation and power infrastructure
- In February 2022, Seabridge secured US\$225 million in funding for substantially started activities from Sprott Royalties and Ontario Teachers Pension Plan by issuing a note that converts into a 60% silver royalty at KSM at commercial production
- In June 2023, Seabridge secured an additional US\$150 million in funding for substantially started activities from Sprott Royalties by issuing a note that converts into a 1.0% NSR at KSM at commercial production
- On January 16, 2024 Seabridge filed the formal application with the B.C. Regulators for a Substantially Started designation
- The application was submitted with letters of support from the Tahltan Central Government, the Nisga'a Lisims Government, B.C. Hydro, District of Stewart, City of Terrace, District of New Hazelton, Town of Smithers, Office of the Gitxsan Hereditary Chiefs and the District of Kitimat-Stikine
- Seabridge expects to receive the substantially started designation in 2024

CAMP 11 WORK AREA



SUBSTANTIALLY STARTED - CAMPS



90 beds have been added to Camp 11 bringing total to 210 beds

SUBSTANTIALLY STARTED - CAMPS

Camp 11 Erosion & Sediment Control Measures
(sediment pond, clarification pond and discharge pond)



SUBSTANTIALLY STARTED - POWER



BC Hydro's Treaty Creek Terminal

SUBSTANTIALLY STARTED - ROADS

Coulter Creek Access Road



20 Kilometers of Treaty Creek Access Road to be Completed by Year End





NTAR Km 4

**SUBSTANTIALLY
STARTED - ROADS**

**PIONEERING OF
NORTH TREATY CREEK
ACCESS ROAD UNDERWAY**



NTAR Km 5

SUBSTANTIALLY STARTED - FISH HABITAT

Glacier Creek Fish Habitat
Construction Completed



SUBSTANTIALLY STARTED - BRIDGES



Bell-Irving Bridge completed





COURAGEOUS LAKE

Northwest Territories, Canada

COURAGEOUS LAKE PROJECT (100% INTEREST)

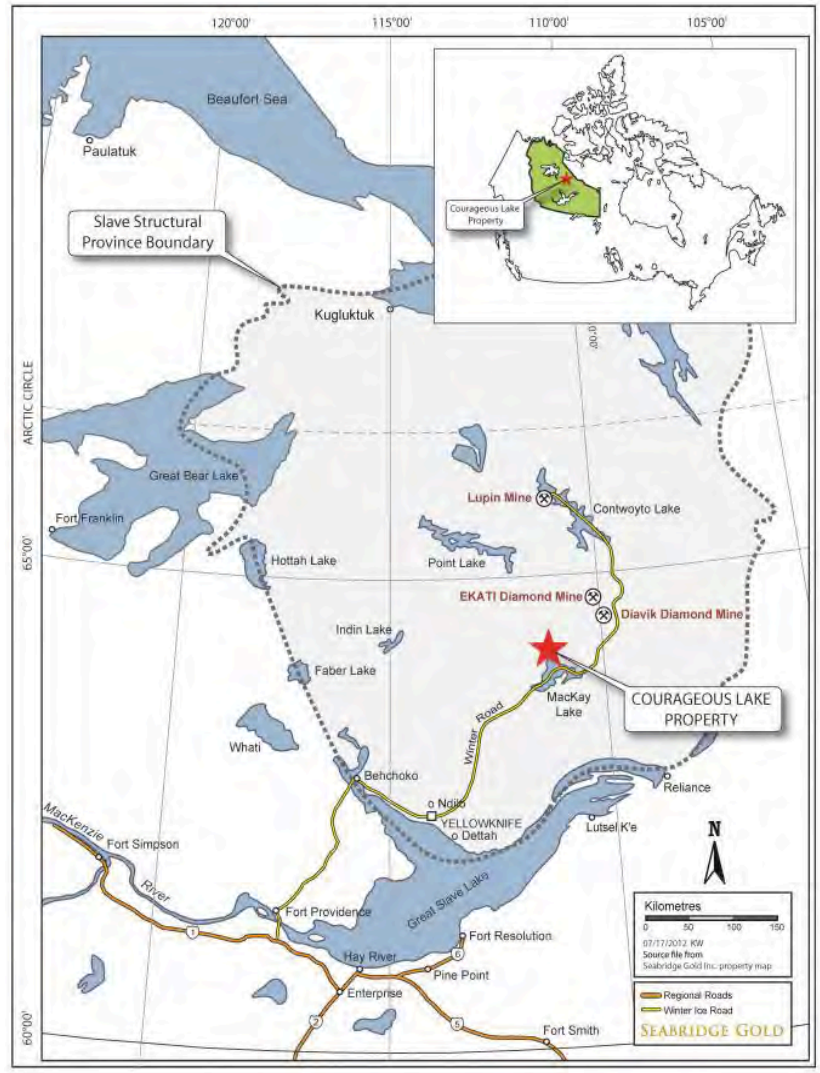
- ▶ 503 km² property located south of Courageous Lake approximately 240 km northeast of Yellowknife in the Northwest Territories
 - ▶ Lies on a historic mining district that includes two past producing gold mines
- ▶ Project located on winter ice road within 100 km of the Diavik and Ekati open pit diamond mines
 - ▶ Demonstrates feasibility of year-round open pit bulk tonnage operations
- ▶ 54 km long Matthews Lake Greenstone Belt hosts 2 deposits: Courageous Lake and Walsh Lake
- ▶ Courageous Lake deposit contains 11.0 million ounces of M&I gold resources at 2.36 gpt
- ▶ 2024 Updated PFS Confirms Significantly Improved Project Over 2012 PFS
- ▶ 12.6-year mine life averaging 201,000 ounces of gold production per year
- ▶ 2024 PEA demonstrates potential to extend mine life for another 15.9 years at 205k oz gold/year

NI 43-101 COMPLIANT RESERVE AND RESOURCE ESTIMATES AS OF JAN 2024

Deposit	Cut-off Grade	Category	Tonnage <i>M tonnes</i>	Grade <i>g/T Au</i>	Contained <i>M oz Au</i>
Courageous Lake	C\$43.66/T NSR	P&P reserves	33.9	2.6	2.8
	0.80 g/T Au	M&I resources	145.2	2.36	11.0
	0.80 g/T Au	Inferred resources	40.6	2.52	3.3
Walsh Lake	0.80 g/T Au	Inferred resources	4.1	4.18	0.55

Note: M&I resources are inclusive of reserves

1. Resource and reserve estimates for the Courageous Lake deposit were presented in a news release dated January 16, 2024 and were prepared by Moose Mountain Technical Services using a gold price of \$1,400/oz. The resource model incorporates a total of 616 holes totaling 127,168 m. M&I and inferred resource estimates are undiluted. P&P reserves for the Courageous Lake deposit were estimated using a series of Lerchs-Grossman pit shell optimizations using a NSR cut-off of C\$49.66/tonne estimated from a gold price of US\$1,400/oz, strip ratio of 7.58:1 and includes mining dilution within the ultimate pit limit.
2. Resource estimates for the Walsh Lake deposit was presented in a new release dated January 16, 2024 and were prepared by Moose Mountain Technical Services using a gold price of \$1,400/oz. Walsh Lake resource model is based on 92 diamond core holes (totaling 17,534 m). The resource estimate is constrained within a conceptual pit limit based on a gold price of US\$1,400/oz and a pit slope of 50 degrees



2024 COURAGEOUS LAKE PFS SITE LAYOUT



2024 PFS DEMONSTRATES A VERY PROFITABLE MINE WITH EXCEPTIONAL LEVERAGE TO GOLD

- ▶ The 2024 PFS for the Courageous Lake deposit is based on a single open-pit mining operation with on-site processing
- ▶ 2024 PFS uses less than 30% of M&I gold resources
- ▶ Average annual gold production of 201,000 ounces
- ▶ All in sustaining costs estimated at US\$999 per oz gold produced
- ▶ Notable improvements over the 2012 PFS include:
 - ▶ 73% increase in after-tax NPV_{5%} to US\$523M from US\$303M
 - ▶ 50% reduction in initial capital from US\$1.522B to US\$747M
 - ▶ Increased after tax IRR from 7.3% to 20.6%
 - ▶ Reduced capital payback from 11.2 years to 2.8 years
 - ▶ 19% increase in average gold reserve grade from 2.2gpT to 2.6gpT
 - ▶ 39% reduction in life of mine strip ratio from 12.5 to 7.6
 - ▶ 38% increase in M&I gold resources from 8.0M ozs to 11.0M ozs
- ▶ Updated NI-43-101 technical report includes 2024 PEA demonstrating the potential to extend 2024 PFS mine life by an additional 15.9 years averaging over 200k ounces of gold production per year

HIGHLIGHTS OF THE COURAGEOUS LAKE 2024 PFS

	Unit	Base Case	Recent Spot
Gold Price	US\$/oz	\$1,850	\$2,200
Exchange Rate	US\$:C\$	0.74	0.74
Mine Life	years	12.6	12.6
LOM Ore	M tonnes	33.9	33.9
LOM Average Grade	g/t Au	2.6	2.6
Throughput Rate	tpd	7,500	7,500
LOM Average Strip Ratio	waste:ore	7.6:1	7.6:1
Avg Recovery Rate	%	89.3	89.3
Avg Annual Production	000 oz Au	201	201
Cash Costs per ounce	US\$/oz Au	\$863	\$871
All-in sustaining costs	US\$/oz Au	\$999	\$1007
Initial Capex	US\$M	\$747	\$747
After Tax Cash Flow	US\$M	\$929	\$1,485
After Tax NPV _{5%}	US\$M	\$523	\$914
After Tax IRR	%	20.6	30.4
After Tax Payback Period	years	2.8	1.9

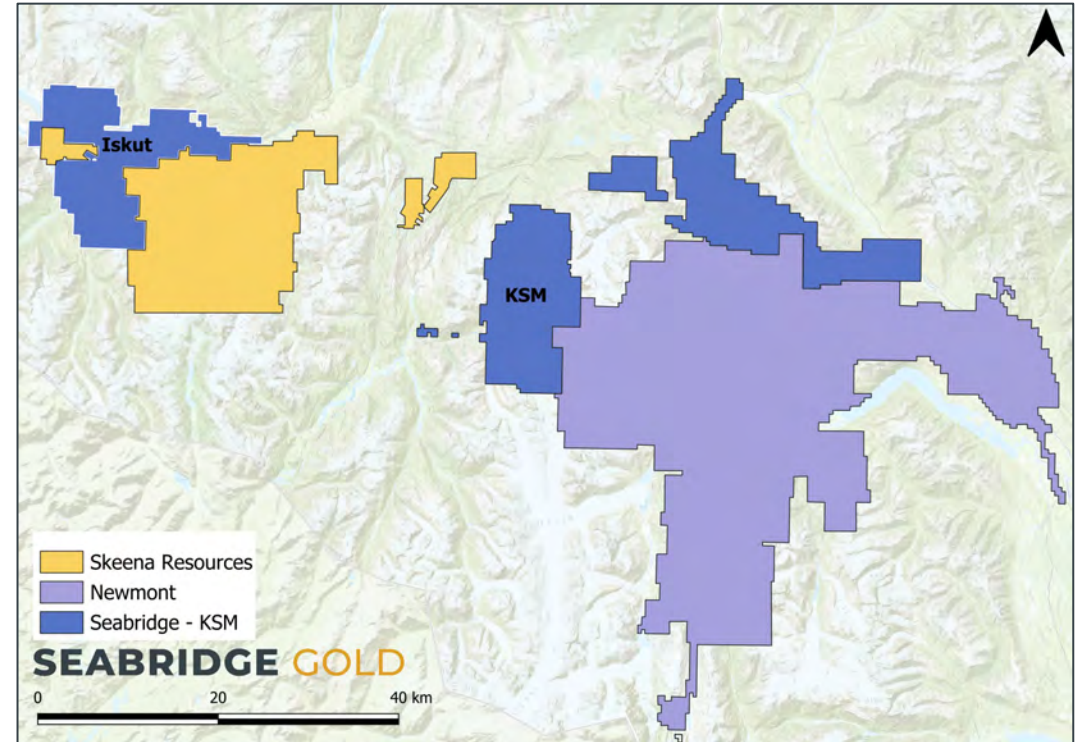


ISKUT PROJECT

British Columbia, Canada

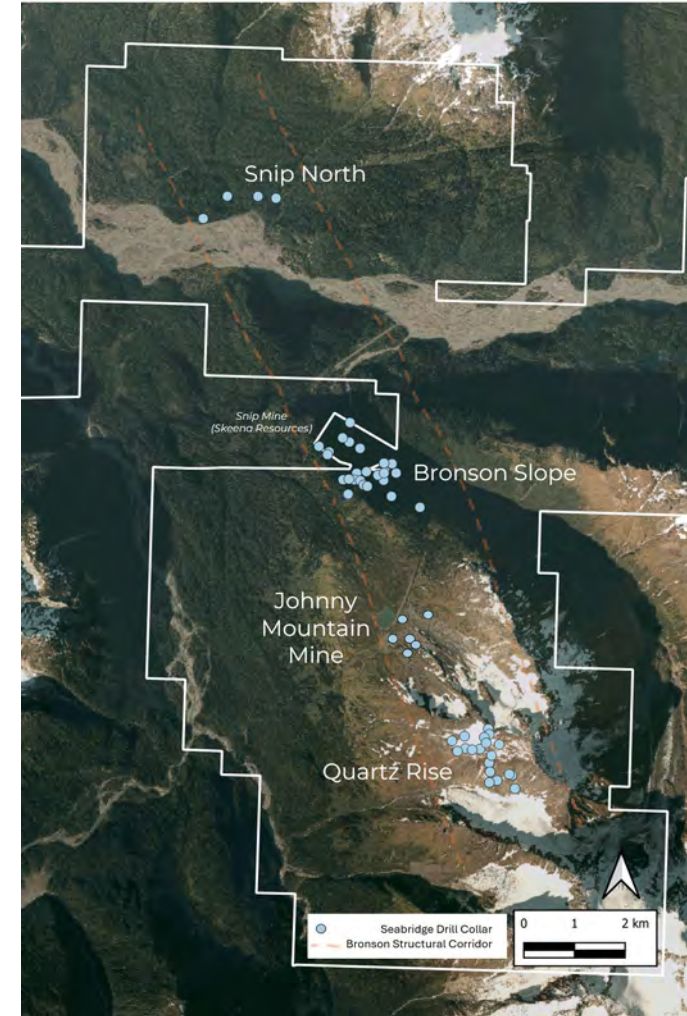
ISKUT PROJECT (100% INTEREST)

- ▶ 294 km² property located in northern British Columbia, ~110 km northwest of Stewart, BC
- ▶ Only 30 km by air from the KSM Project
- ▶ Includes the former high-grade Johnny Mountain gold mine and the Bronson Slope Cu-Au deposit
- ▶ Acquired in June 2016 for potential large gold-copper porphyry deposits similar to KSM
- ▶ Highlights to date:
 - Discovered massive N/S trending regional structure accounting for all known concentrations of copper and gold
 - Discovered major mineralized breccia pipe below Bronson Slope likely caused by large porphyry intrusive
 - Drilled 174 meters of core assaying 0.86 gpt gold and 0.34% copper in 2023
 - 2023 drilling expanded Bronson Slope deposit
 - **New NI-43-101 resource estimate announced on June 27, 2024 increased historic estimate by 3.2 million ounces of gold and 0.5 billion pounds of copper**



ISKUT: EXPLORING FOR GOLD-COPPER PORPHYRIES SIMILAR TO KERR

- ▶ Three district scale porphyry targets developed in similar geological setting to KSM below Quartz Rise, Bronson Slope and Snip North
- ▶ All three targets validated by geology, geophysics and shallow drilling
- ▶ \$12M 2024 program underway to test copper-gold porphyry targets at Snip North and Bronson
- ▶ Undertaking voluntary environmental remediation programs to mitigate impact of historical mining activity, earning international recognition



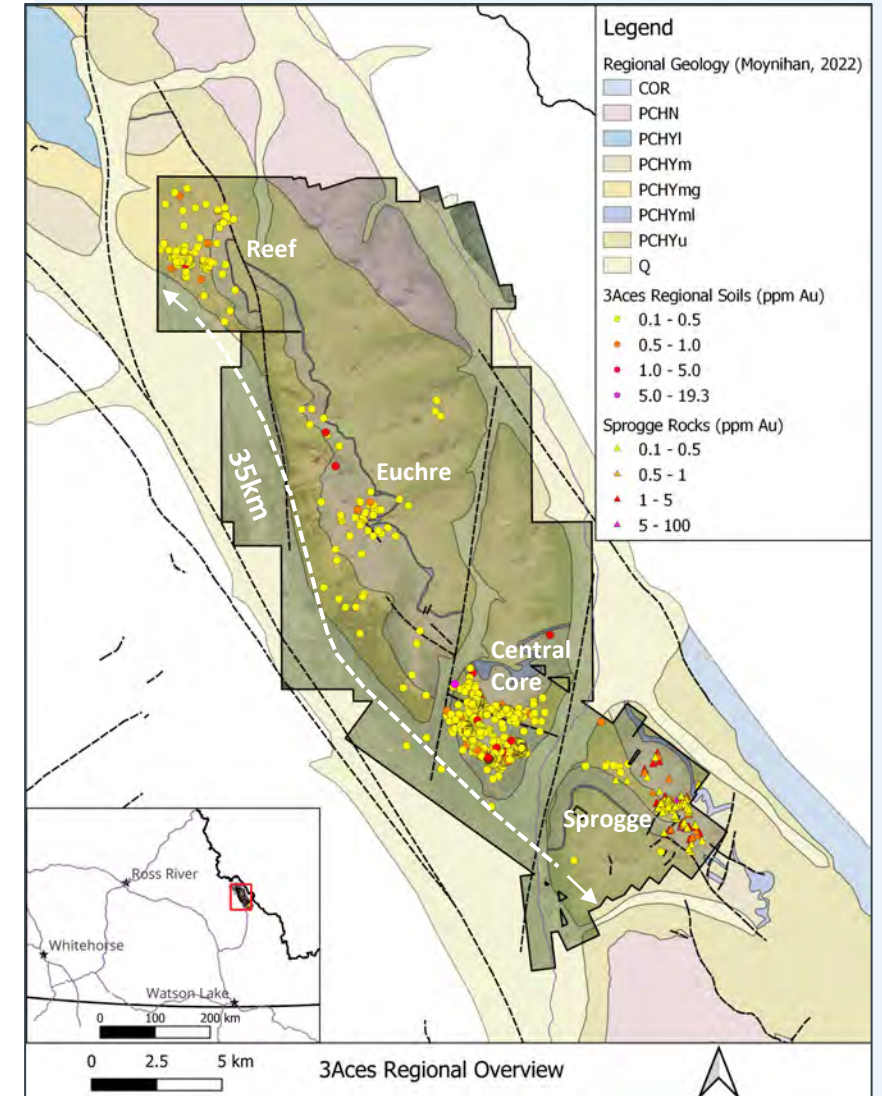


3 ACES PROJECT

Yukon Territory, Canada

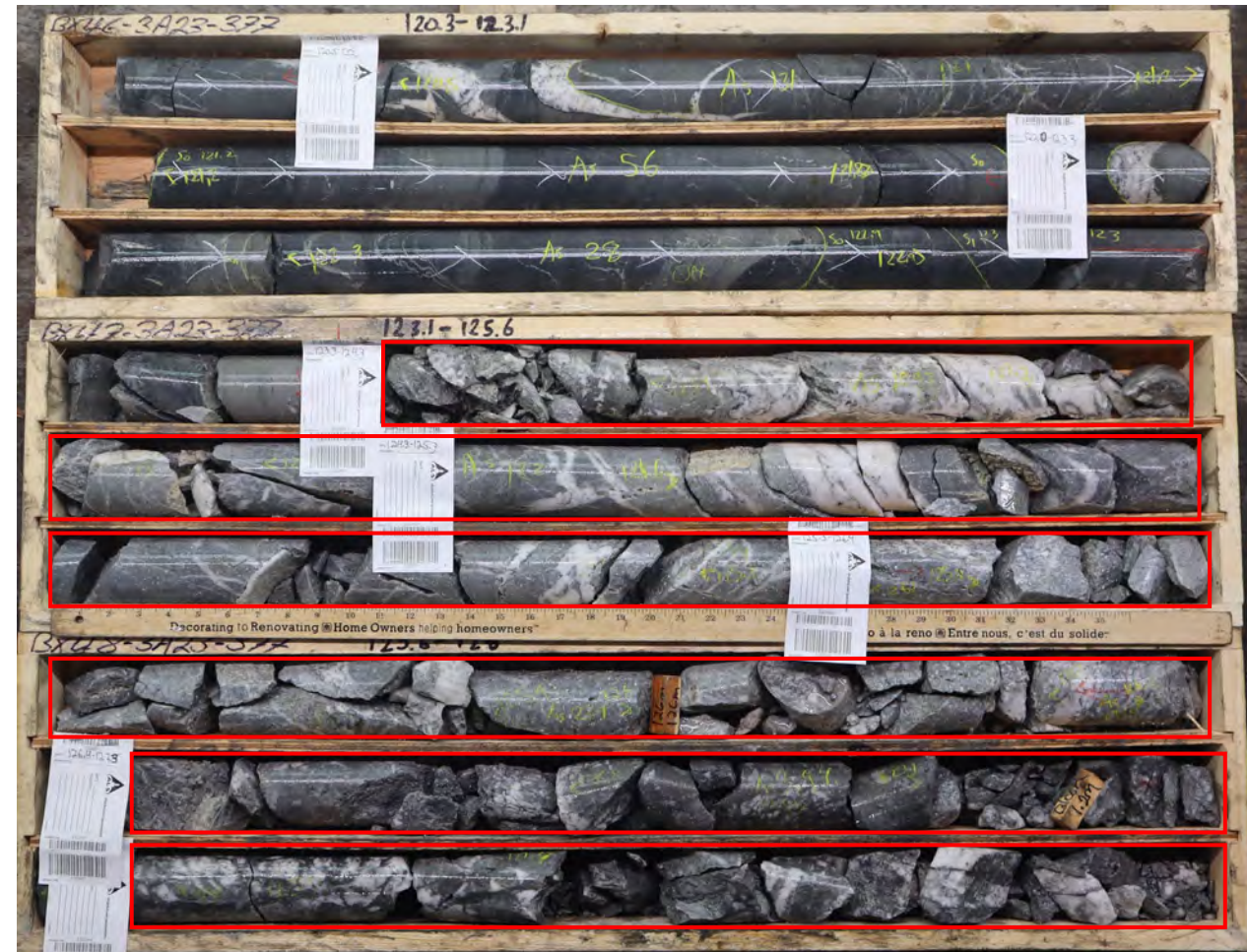
3 ACES PROJECT (100% INTEREST)

- ▶ In May 2020, Seabridge acquired 100% of the 3 Aces Project in the Yukon from Golden Predator Mining
- ▶ Upfront payment of 300K shares and a 0.5% NSR royalty
- ▶ Conditional future cash payments of C\$1.0M on discovery of 2.5M oz Au, plus a further C\$1.25M on finding an additional 2.5M oz Au
- ▶ District-scale, orogenic gold project with many sizable, near surface, high-grade gold zones identified
- ▶ Four high-grade targets over 35km of strike (two targets completely untested)
- ▶ 314 km² property located in southwestern Yukon Territory with year-round access
- ▶ All targets within 10km of Yukon Highway 10
- ▶ 27-hole 2023 drill program confirms geologic model, expands Spades mineralization to SE and identifies new zone at Clubs
- ▶ \$6M 2024 exploration program will continue to expand mineralization in the Central Core and provide a first drill test on regional targets



POTENTIAL HIGH-GRADE, BULK-MINEABLE GOLD DEPOSIT AT 3 ACES

- ▶ Geological setting similar to some of the world's largest and richest gold deposits (Muruntau, Fosterville, Macreac)
- ▶ 300 holes drilled in the Central Core Area, with 37% intersecting +5 g/t Au and 27% with +8 g/t Au
- ▶ Halo of lower grade zones exists outside of high-grade gold zones
- ▶ Bulk sampling programs recovered 86% to 95% of gold in gravity circuit
- ▶ 2023 drilling extended high-grade Spades mineralization 250m to the southeast (3A23-377 7.2m @ 7.6 g/t)
- ▶ 2023 drilling at Clubs identified new broad zone of mineralization (3A23-381 41.2m @ 1.52 g/t from 146.3m)



High-grade gold mineralization extending the Spades zone 250m SE (7.2m @ 7.6 g/t)



SNOWSTORM PROJECT

Nevada, USA

SNOWSTORM PROJECT (100% INTEREST)

- ▶ 102.8 km² property located in the northern Snowstorm Mountains in Humboldt and Elko counties, Nevada
 - ▶ Located in an established gold mining region with access to key regional infrastructure
- ▶ Sits on the intersection of three major Nevada gold belts where over 300M oz of gold has been discovered
 - ▶ Getchell, Carlin and the Northern Nevada Rift Zone
- ▶ Contiguous and on strike with several large producing gold mines
 - ▶ 6 km north of Nevada Gold Mine's (Barrick and Newmont JV) Twin Creeks mine and 15 km northwest of the Turquoise Ridge mine (combined 19.8M oz Au of resources and 25.8M oz of production through end of 2019)
- ▶ Geologic, geochem and geophysical data documents hydrothermal alteration zones and structural settings consistent with large Nevada gold deposits
 - ▶ During 2019 drill program, Seabridge encountered the same Ordovician carbonate stratigraphy that is characteristic of Getchell-style deposits
 - ▶ 2020 drill program confirmed the presence of gold in the system
 - ▶ 2022 and 2023 drill programs continues to confirm potential of Getchell-style deposits

LARGE, EARLY-STAGE PROPERTY WITH POTENTIAL FOR A MAJOR GOLD DISCOVERY



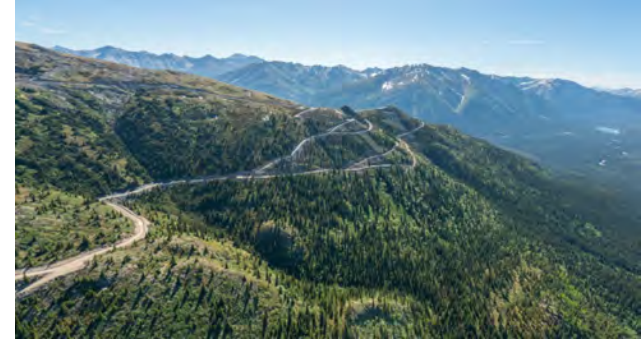
WHY INVEST IN SEABRIDGE



Unparalleled leverage
in emerging
gold and copper bull markets



Ownership of the largest
undeveloped gold/copper
project in the world



Upside from large
North American exploration
project portfolio



Addition of East Mitchell (fka
Snowfield) significantly improves
KSM economics



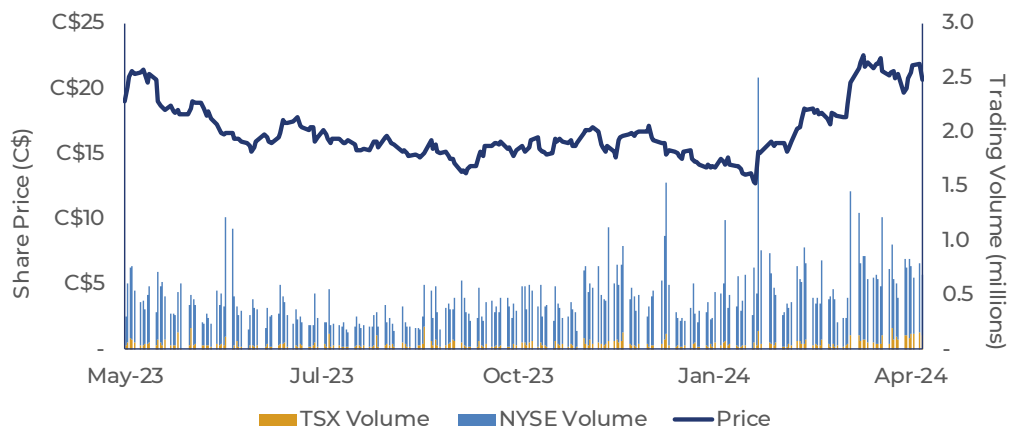
KSM JV agreement with
major mining Company
expected to unlock value



Excellent record of creating
shareholder value with
minimal share dilution

CAPITAL MARKETS PROFILE

SHARE PRICE AND VOLUME (LAST 12 MONTHS)



TOP SHAREHOLDERS

Management, Board & Insiders	>25%
National Bank Financial	5.4%
Van Eck Associates	4.4%
Kopernik Global Investors	3.9%
Paulson & Co.	2.5%
Sprott Asset Management	2.0%
Tidal Investments	1.4%
Russel Investment Management	1.1%
Fidelity Management	1.1%

1. Includes 659.7K Options and RSUs
2. Balance of cash and short-term deposits as of March 31, 2023
3. Marketable securities include common shares of several mining companies that were received as consideration for optioned mineral properties, other short-term investments and ~7.84% of Paramount Gold Nevada Corp.

CAPITAL STRUCTURE

Tickers	TSX:SEA NYSE:SA
Indices	GDXJ, S&P/TSX Composite, Global Mining and Global Gold
Share Price (May 31, 2024)	C\$21.60 (US\$15.85)
52-Week Trading Range	C\$12.62 – C\$23.00
Basic Shares Outstanding	~88M
FD Shares Outstanding	88.7M ¹
Market Capitalization	C\$1.9B
Cash and Short-Term Deposits	>C\$63M
Marketable Securities	C\$3M ³

RESEARCH COVERAGE

Company	Research Analyst
B Riley	Lucas Pipes
Cantor Fitzgerald	Mike Kozak
Gold Stock Analyst	Garrett Goggin
Red Cloud	David Talbot
RBC Dominion Securities	Michael Siperco



SEABRIDGE GOLD

CONTACT US


HEADQUARTERS

Toronto, ON

 +1 416 367 9292

 +1 416 367 2711


 info@seabridgegold.com

 106 Front Street East, Suite 400
Toronto, ON, Canada, M5A 1E1

Smithers, BC


 +1 250 847 4704

 ksm_community@seabridgegold.com

 1330 Main Street
Smithers, BC, Canada, V0J 2N0

Terrace, BC

 +1 250 847 4704

 101-4650 Lazelle Avenue
Terrace, BC, Canada, V8G 1S6