

## **1977 Pontiac LeMans Sports Coupe**



This 1977 Pontiac LeMans Sports Coupe is in good running and driving condition with a few flaws to note.

### **Exterior**

There are minor scratches around the vehicle. Most are too small to see in photos. There are a few minor paint chips around the exterior of the vehicle. The paint is overall in good condition and shines nicely. There are areas of surface rust around the vehicle and to the undercarriage, see pictures. The front windshield has minor scratches from a worn wiper blade. All four wheels are in good condition with no curb rash or corrosion notable. The tires show 10/32nds of tread remaining, and even wear throughout. I checked the vehicle with a magnet and found it to stick all around but was weaker in the lower panels. Not excessive.

### **Interior**

The carpet shows some discoloration and wear from aging and use. The interior trim and upholstery throughout the vehicle are in good condition with little to no wear to note. All of the interior functions,

controls, and accessories are operating as designed. There were no odd smells in the vehicle at the inspection, and this is a non-smoker vehicle. All of the gauges appear accurate and operational, with the exception of the speedometer as it could not be tested.

## Test Drive

The seller declined a road test at the inspection. Due to this, I spent more time going over the vehicle. I found the engine to start and run well. The transmission engaged in both forward and reverse with no issues. The brakes were firm, and held the vehicle properly. I found no leaks to the underside. A visual inspection of the steering and suspension showed no obvious issues. Mechanically, I see no obvious issues with the vehicle.

Please see below for pictures and more info.

Vehicle Info	
Year - 1977	
Make - Pontiac	
Model - LeMans Sports Coupe	
Mileage - 57578	
Transmission - Automatic	
VIN Number - 2fa726p314805	
Interior - Leather	
Interior Color - Red	
Body Color - White	
Engine - 8 Cylinder	
Drive Type - Rear Wheel Drive	
Fuel Type - Gas	
Engine Number - N/A	
Transmission Number - N/A	

Exterior	
Wiper Blades	✓
Windshield Washer	✓
Body Alignment	✓
Scratches	✗
There are minor scratches around the vehicle. Most are too small to see in photos.	
Dings	✓
Dents	✓
Paint Condition	✗
There are a few minor paint chips around the exterior of the vehicle.	
Body Seals	✓
Rust	✗
There are areas of surface rust around the vehicle and to the undercarriage, see pictures.	
Exterior Lights	✓
Door Mirrors	✓
Bumpers	✓
Side Moldings	✓
Frame Damage	✓
Glass	✗
The front windshield has minor scratches from a worn wiper blade.	
Body Filler?	✗
I checked the vehicle with a magnet and found it to stick all around but was weaker in the lower panels. Not excessive.	
Hood	✓


Mechanical	
Air Filter	✓
Battery Condition	✓
Charging System	✓
Cooling Fan Condition	✓
Radiator Cap Sealing Properly	✓
Hoses	✓
Radiator	✓
Engine Coolant	✓
Coolant Leaks	✓
Belts	✓
Power Steering	✓
Steering Fluid	✓
Engine Oil	✓
Engine Fluid Leaks	✓
Transmission Fluid	✓
Transmission Leaks	✓
Brake System	✓
Brake Fluid Leaks	✓
Differential leaks	✓
Muffler System	✓
CV Joints and Axles	✓
Shocks and bushings	✓
Ball Joints and Tie Rods	✓
Modifications	✓

Road Test	
Road Test	✗
The seller declined a road test at the inspection.	
Engine Performance	✓
Engine Starting	✓
TIRES/WHEELS	
Spare Tire	✓
Tire Manufacturer	
Driver's Front - Bf Goodrich	
Passenger's Front - Bf Goodrich	
Driver's Rear - Bf Goodrich	
Passenger's Rear - Bf Goodrich	
Tire Size	
Driver's Front - 255/70/15	

Doors	✓
Floors	✓
Rockers	✓
Quarter Panels	✓
Chrome	✓

Interior	
Steering Wheel	✓
Horn	✓
Seat Condition	✓
Seat Belts	✓
Radio/Navigation	✓
Inner Door Panels	✓
Window Function	✓
Center Console	✓
Dash	✓
Sun Visors	✓
Dash Lights	✓
Dash Gauges	✓
Air Conditioning	✓
Heater	✓
Rear Defroster	✓
Carpet	✗
The carpet shows some discoloration and wear from aging and use.	
Floor Mats	✓
Cigarette Use	✓
Unusual Odors	✓
Headliner	✓
Blower Motor	✓
Interior Trim	✓
Inner Trunk	✓

Passenger's Front - 255/70/15
Driver's Rear - 255/70/15
Passenger's Rear - 255/70/15
Tire Condition
Driver's Front - No Issues
Passenger's Front - No Issues
Driver's Rear - No Issues
Passenger's Rear - No Issues
Wheel Condition
Driver's Front - No Issues
Passenger's Front - No Issues
Driver's Rear - No Issues
Passenger's Rear - No Issues
Tire Tread
Driver's Front - 10/32
Passenger's Front - 10/32
Driver's Rear - 10/32
Passenger's Rear - 10/32



<b>10/32 OR MORE</b>
Tires have plenty of tread! (standard)
<b>8/32 OR MORE</b>
Tires have plenty of tread! (low profile)
<b>5/32 TO 7/32</b>
Tires will need replacement soon!
<b>4/32 OR LESS</b>
Tires need replacement!



1







CAN AM

RAMBLER Sport coupe

BF Goodrich











































FB  
400 cu. in.  
720K4EH

# VEHICLE EMISSION CONTROL INFORMATION



- SET PARKING BRAKE AND BLOCK DRIVE WHEELS. DISCONNECT A/C COMPRESSOR CLUTCH CONNECTOR AND START ENGINE. MAKE ALL ADJUSTMENTS WITH ENGINE AT NORMAL OPERATING TEMPERATURE. CHOKER OPEN, A/C OFF. MANUAL TRANSMISSION IN NEUTRAL, AUTOMATIC TRANSMISSION IN DRIVE. UNLESS OTHERWISE NOTED.
1. DISCONNECT AND PLUG THE VACUUM ADVANCE HOSE AT DISTRIBUTOR.
  2. SET TO SPECIFIED TIMING AT OR BELOW RECOMMENDED IDLE SPEED.
  3. RECONNECT VACUUM ADVANCE HOSE EXCEPT 400 CU. IN. ENGINE MANUAL TRANSMISSION VEHICLES.
  4. DISCONNECT PURGE HOSE AT CANISTER (PLUG HOSE ON 151 CU. IN. ENGINE).
  5. FOR A/C CARS:
    - A. (IDLE SOLENOID INACTIVE AND A/C OFF) SET IDLE SPEED SCREW TO OBTAIN SPECIFIED RPM.
    - B. (IDLE SOLENOID ACTIVE AND A/C ON WITH COMP. CLUTCH CONNECTOR OFF.) OPEN THROTTLE MOMENTARILY TO INSURE SOLENOID IS FULLY EXTENDED. SET SOLENOID ACTIVE IDLE SPEED BY ADJUSTING SOLENOID PLUNGER (ADJACENT SOLENOID IDLE SCREW FOR 151 CU. IN. ENGINE) TURN A/C OFF.
  6. FOR NON A/C CARS: SET IDLE SPEED SCREW ON CARBURETOR TO OBTAIN SPECIFIED RPM (SOLENOID ACTIVE, IF SO EQUIPPED).
  7. RECONNECT DISTRIBUTOR VACUUM HOSE ON 400 CU. IN. ENGINE MANUAL TRANSMISSION VEHICLES.
  8. PLACE AUTOMATIC TRANSMISSION IN PARK.
  9. DISCONNECT AND PLUG EGR VACUUM HOSE AT EGR VALVE.
  10. ADJUST FAST IDLE SCREW ON TOP STEP (SECOND STEP FOR 301 CU. IN. ENGINE ONLY) OF FAST IDLE CAM TO OBTAIN SPECIFIED RPM.
  11. STOP ENGINE AND RECONNECT EGR HOSE, CANISTER HOSE, AND A/C COMPRESSOR CLUTCH CONNECTOR.

THIS VEHICLE CONFORMS TO U.S. E.P.A. REGULATIONS APPLICABLE TO 1978 AND NEW MOTOR VEHICLES.

## CATALYST

EGR-EFE	AUTOMATIC TRANSMISSION
TIMING (° BTDC @ RPM)	18° @ 600 MAX.
SPARK PLUG GAP	.060 INCH
CARB SCREW (RPM) SOLENOID INACTIVE	600 IN DRIVE
CARB SCREW (RPM) SOLENOID ACTIVE	700 IN DRIVE
CHOKER SETTING	1 NOTCH RICH
FAST IDLE SCREW (RPM)	1800 IN PARK
VACUUM BREAK SETTING - REAR	-
IDLE MIXTURE SCREWS ARE PRESET AND CAPPED AT FACTORY. DO NOT BREAK CAPS. ADJUSTMENT DURING TUNE-UP IS NOT RECOMMENDED.	

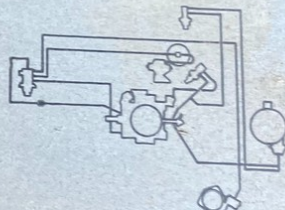
FOR MAJOR REPAIR, ADJUSTING MIXTURE SETTING BY OTHER THAN APPROVED SERVICE MANUAL PROCEDURE MAY VIOLATE FEDERAL AND/OR CALIFORNIA OR OTHER STATE LAWS.

SEE SERVICE MANUAL AND MAINTENANCE SCHEDULE I FOR ADDITIONAL INFORMATION.

## LOW ALTITUDE CERTIFICATION

528102

## VACUUM HOSE ROUTING



GENERAL MOTORS CORPORATION



FB  
400 cu. in.  
720K4EH

# VEHICLE EMISSION CONTROL INFORMATION



- SET PARKING BRAKE AND BLOCK DRIVE WHEELS. DISCONNECT A/C COMPRESSOR CLUTCH CONNECTOR AND START ENGINE. MAKE ALL ADJUSTMENTS WITH ENGINE AT NORMAL OPERATING TEMPERATURE. CHOKE OPEN, A/C OFF. MANUAL TRANSMISSION IN NEUTRAL, AUTOMATIC TRANSMISSION IN DRIVE UNLESS OTHERWISE NOTED.
1. DISCONNECT AND PLUG THE VACUUM ADVANCE HOSE AT DISTRIBUTOR.
  2. SET TO SPECIFIED TIMING AT OR BELOW RECOMMENDED IDLE SPEED.
  3. RECONNECT VACUUM ADVANCE HOSE EXCEPT 400 CU. IN. ENGINE MANUAL TRANSMISSION VEHICLES.
  4. DISCONNECT PURGE HOSE AT CANISTER (PLUG HOSE ON 151 CU. IN. ENGINE).
  5. FOR A/C CARS:
    - A. (IDLE SOLENOID INACTIVE AND A/C OFF) SET IDLE SPEED SCREW TO OBTAIN SPECIFIED RPM.
    - B. (IDLE SOLENOID ACTIVE AND A/C ON WITH COMP. CLUTCH CONNECTOR OFF.) OPEN THROTTLE MONITORILY TO INSURE SOLENOID IS FULLY EXTENDED. SET SOLENOID ACTIVE IDLE SPEED BY ADJUSTING SOLENOID PLUNGER (ADJACENT SOLENOID IDLE SCREW FOR 151 CU. IN. ENGINES) TURN A/C OFF.
  6. FOR NON A/C CARS: SET IDLE SPEED SCREW ON CARBURETOR TO OBTAIN SPECIFIED RPM (SOLENOID ACTIVE, IF SO EQUIPPED).
  7. RECONNECT DISTRIBUTOR VACUUM HOSE ON 400 CU. IN. ENGINE MANUAL TRANSMISSION VEHICLES.
  8. PLACE AUTOMATIC TRANSMISSION IN PARK.
  9. DISCONNECT AND PLUG EGR VACUUM HOSE AT EGR VALVE.
  10. ADJUST FAST IDLE SCREW ON TOP STEP (SECOND STEP FOR 301 CU. IN. ENGINE ONLY) OF FAST IDLE CAM TO OBTAIN SPECIFIED RPM.
  11. STOP ENGINE AND RECONNECT EGR HOSE, CANISTER HOSE, AND A/C COMPRESSOR CLUTCH CONNECTOR.

## CATALYST

### EGR-EFE

TIMING (P.B.T.D.C. @ RPM)	AUTOMATIC TRANSMISSION
SPARK PLUG GAP	18° @ 600 MAX. .060 INCH
CARD SCREW (RPM) SOLENOID INACTIVE	600 IN DRIVE
CARD SCREW (RPM) SOLENOID ACTIVE	700 IN DRIVE
CHOKE SETTING	1 NOTCH RICH
FAST IDLE SCREW (RPM)	1800 IN PARK

### VACUUM BREAK SETTING - REAR

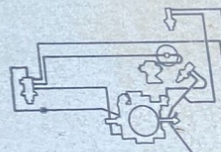
IDLE MIXTURE SCREWS ARE PRESET AND CAPPED AT FACTORY. DO NOT BREAK CAPS. ADJUSTMENT DURING TUNE-UP IS NOT RECOMMENDED.

FOR MAJOR REPAIR, ADJUSTING MIXTURE SETTING BY OTHER THAN APPROVED SERVICE MANUAL PROCEDURE MAY VIOLATE FEDERAL AND/OR CALIFORNIA OR OTHER STATE LAWS.

SEE SERVICE MANUAL AND MAINTENANCE SCHEDULE I FOR ADDITIONAL INFORMATION.

## LOW ALTITUDE CERTIFICATION

### VACUUM HOSE ROUTING



THIS VEHICLE CONFORMS TO U.S. E.P.A. REGULATIONS APPLICABLE TO 1977 AND NEWER MOTOR VEHICLES.

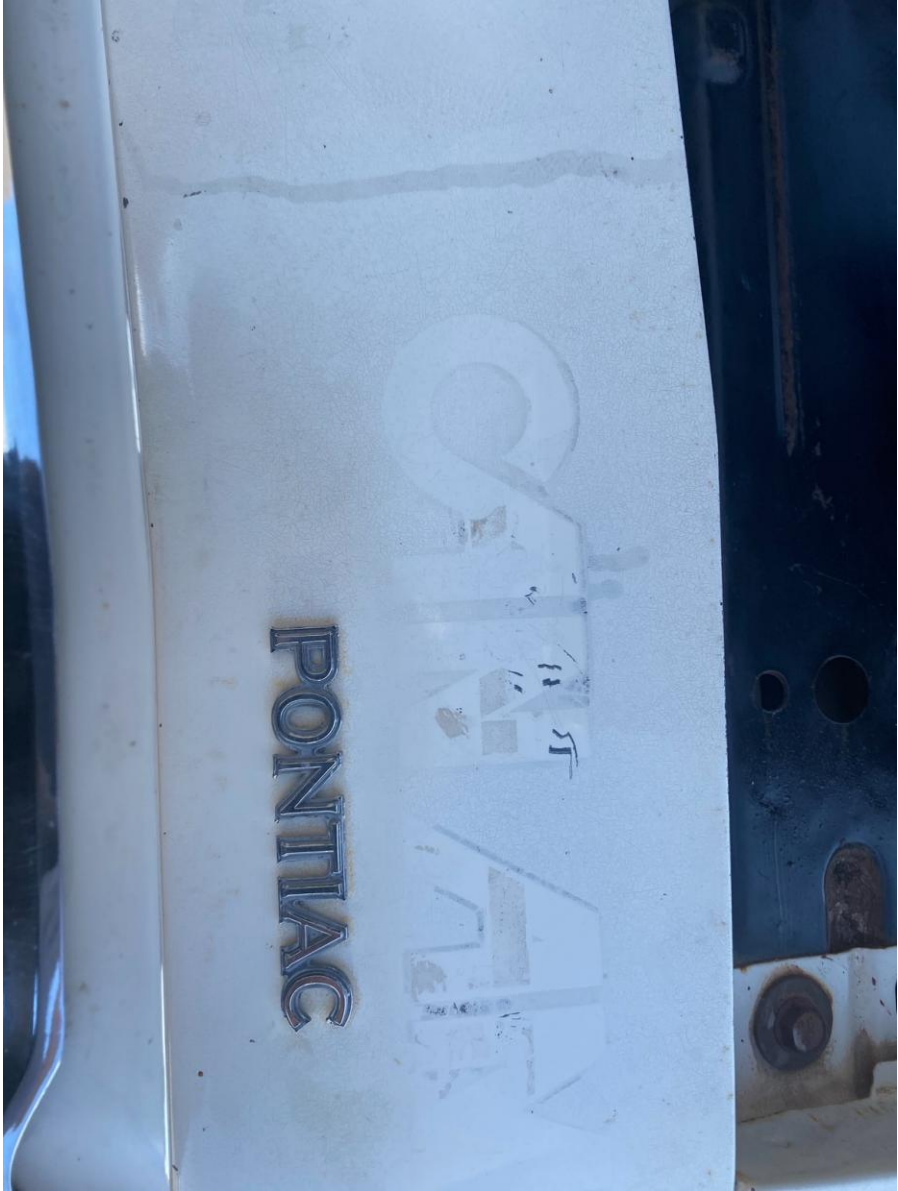
GENERAL MOTORS CORP.





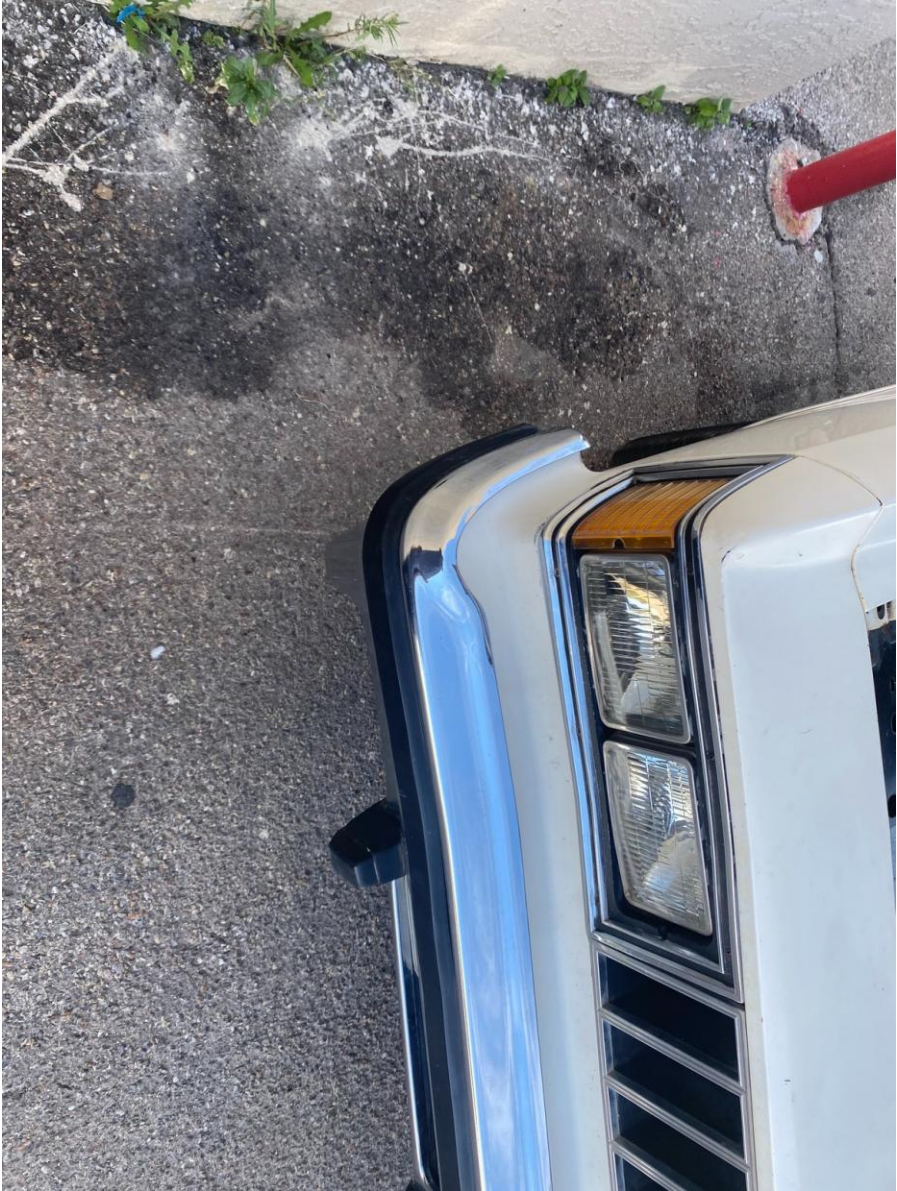




























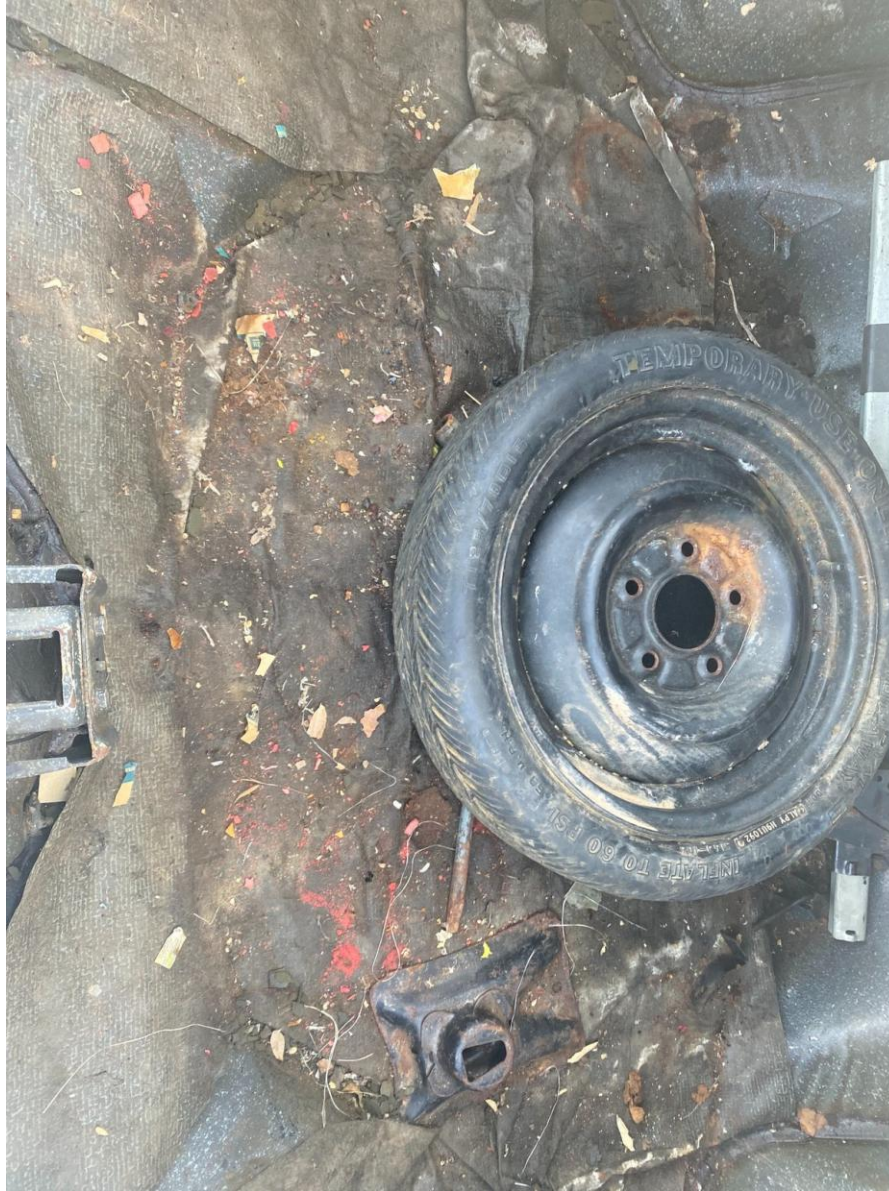




































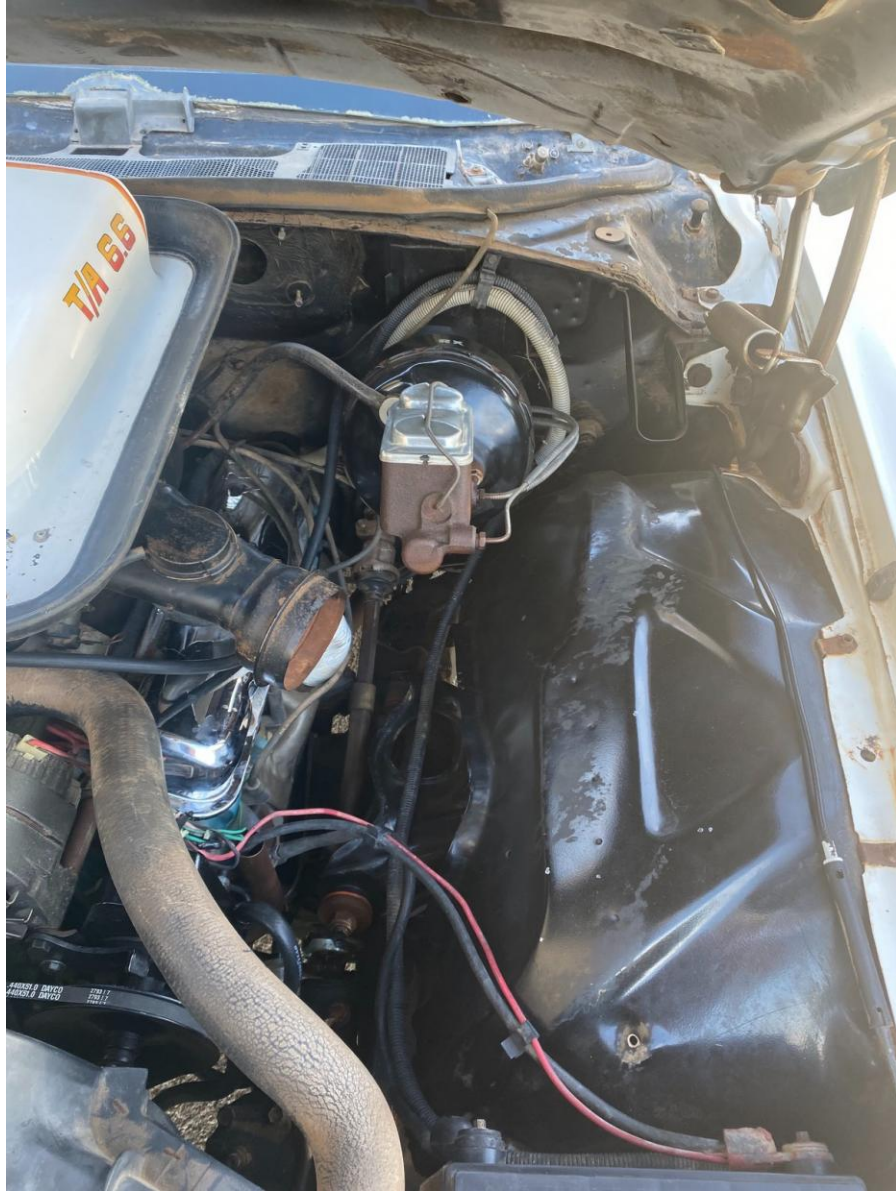


















**MFD. BY GENERAL MOTORS CORP.**

DATE	GVWR	GAWRFRT	GAWR RR
05-77	5422	2599	2823

THIS VEHICLE CONFORMS TO ALL APPLICABLE FEDERAL  
MOTOR VEHICLE SAFETY STANDARDS IN EFFECT ON THE  
DATE OF MANUFACTURE SHOWN ABOVE.

2F3T77P314805 PASSENGER CAR  
CONSUMER INFORMATION TABLES CCE





































CAN AM

RAMBLER Sport coupe

BF Goodrich























































73































