

1951 Ford Mercury



1951 Mercury Custom

Pictures alone really don't do this Mercury justice. Every aspect of this car is show-worthy, from the meticulously crafted gold foil flames to the expert body work and beautifully finished interior, this custom is dressed to impress. The paint shows supremely well, with a lot of depth and shine. The interior is expertly finished in leather and stunning hand-made wood trim.

The engine starts up immediately, but may need some coaxing with the throttle when cold. It settles into a nice, throaty idle, with no unusual top or bottom end noises. The engine does benefit from a large electrically controlled radiator fan. Coolant temps hovered right around 190 degrees on what was a pretty hot inspection day. The transmission engagement is a little sloppy, but it is relatively easy to find drive once you get used to it. The transmission itself drives out very smoothly and the 472 CI Cadillac engine makes plenty of low-end torque.

The car has drum brakes all around and pedal feel is excellent. The power steering is very light and easy to operate at low speed. The linkage itself is quite loose. The seller states that this is due to system modifications needed to achieve the desired ride height and not a steering system problem. Still, the buyer may want to tighten the steering up depending on their preference. The ride is typical lowered custom, bordering on the floaty side. Again, this is something that the buyer could easily adjust depending on preference.

The transmission does leak and will require a drip tray to keep the garage floor clean. The seller states that a little seeping is normal for this type of transmission. The car also has a small fuel leak, as stated in the inspection findings. This is probably a repair that's warranted sooner rather than later. The seller is aware of both leaks.

Overall, the car is a stunning example of expert craftsmanship, a rolling piece of art if there ever was

one.

Vehicle Info	
Year - 1951	
Make - Ford	
Model - Mercury	
Mileage - 112	
Transmission - Automatic	
VIN Number - 51ME43065M	
Interior - Leather	
Interior Color - Tan	
Body Color - Tan	
Engine - 8 Cylinder	
Drive Type - Rear Wheel Drive	
Fuel Type - Gas	

Exterior	
Wiper Blades	✓
Windshield Washer	✓
Body Alignment	✓
Scratches	✓
Dings	✓
Dents	✓
Paint Condition	✓
Body Seals	✓
Rust	✓
Exterior Lights	✓
Door Mirrors	✓
Bumpers	✓
Side Moldings	✓
Frame Damage	✓
Glass	✗
Rear window tint just slightly starting to bubble. Not really that noticeable.	
Body Filler?	✓
Hood	✓
Doors	✓
Floors	✓
Rockers	✓
Quarter Panels	✓
Chrome	✓


Interior	
Steering Wheel	✓
Horn	✓
Seat Condition	✓
Radio/Navigation	✓
Inner Door Panels	✓
Power Locks	✓
Window Switches	✓
Window Function	✓
Center Console	✓
Dash	✓
Sun Visors	✓
Dash Lights	✓
Dash Gauges	✓
Air Conditioning	✓

Mechanical	
Air Filter	✓
Battery Condition	✓
Charging System	✓
Cooling Fan Condition	✓
Radiator Cap Sealing Properly	✓
Hoses	✓
Radiator	✓
Engine Coolant	✓
Coolant Leaks	✓
Belts	✓
Power Steering	✓
Steering Fluid	✓
Engine Oil	✓
Engine Fluid Leaks	✗
Small fuel leak on driver side towards the rear of the vehicle. Seller is aware of the situation and may try to repair prior to sale.	
Transmission Fluid	✓
Transmission Leaks	✗
Transmission pan leaking. Seller states this is very common for this type of transmission.	
Brake System	✓
Brake Fluid Leaks	✓
Differential leaks	✓
Muffler System	✓
CV Joints and Axles	✓
Shocks and bushings	✓
Ball Joints and Tie Rods	✓
Modifications	✓

Road Test	
Road Test	✓
Engine Performance	✓
Transmission performance	✓
Differential Performance	✓
Wheel Bearing Performance	✓
Braking Performance	✓
Suspension Performance	✓
Steering Performance	✗
Steering is very loose due to modifications made to lower the vehicle. Buyer may want to tighten the system up post purchase, but it still works just fine.	
Engine Starting	✓
TIRES/WHEELS	
Spare Tire	✗
No spare tire found with vehicle.	
Tire Manufacturer	
Driver's Front - Coker	
Passenger's Front - Coker	
Driver's Rear - Coker	
Passenger's Rear - Coker	
Tire Size	
Driver's Front - P205/75R15	
Passenger's Front - P205/75R15	
Driver's Rear - P205/75R15	
Passenger's Rear - P205/75R15	

Heater	✓
Rear Defroster	✓
Carpet	✓
Floor Mats	✓
Cigarette Use	✓
Unusual Odors	✓
Headliner	✓
Blower Motor	✓
Interior Trim	✓
Inner Trunk	✓

Tire Condition
Driver's Front - Dry Rot
Passenger's Front - Dry Rot
Driver's Rear - Dry Rot
Passenger's Rear - Dry Rot
Wheel Condition
Driver's Front - No Issues
Passenger's Front - No Issues
Driver's Rear - No Issues
Passenger's Rear - No Issues
Tire Tread
Driver's Front - 8/32
Passenger's Front - 8/32
Driver's Rear - 8/32
Passenger's Rear - 8/32



10/32 OR MORE
Tires have plenty of tread!
(standard)

8/32 OR MORE
Tires have plenty of tread!
(low profile)

5/32 TO 7/32
Tires will need replacement soon!

4/32 OR LESS
Tires need replacement!

1



2



3





5



6



7





9











14









18



19



















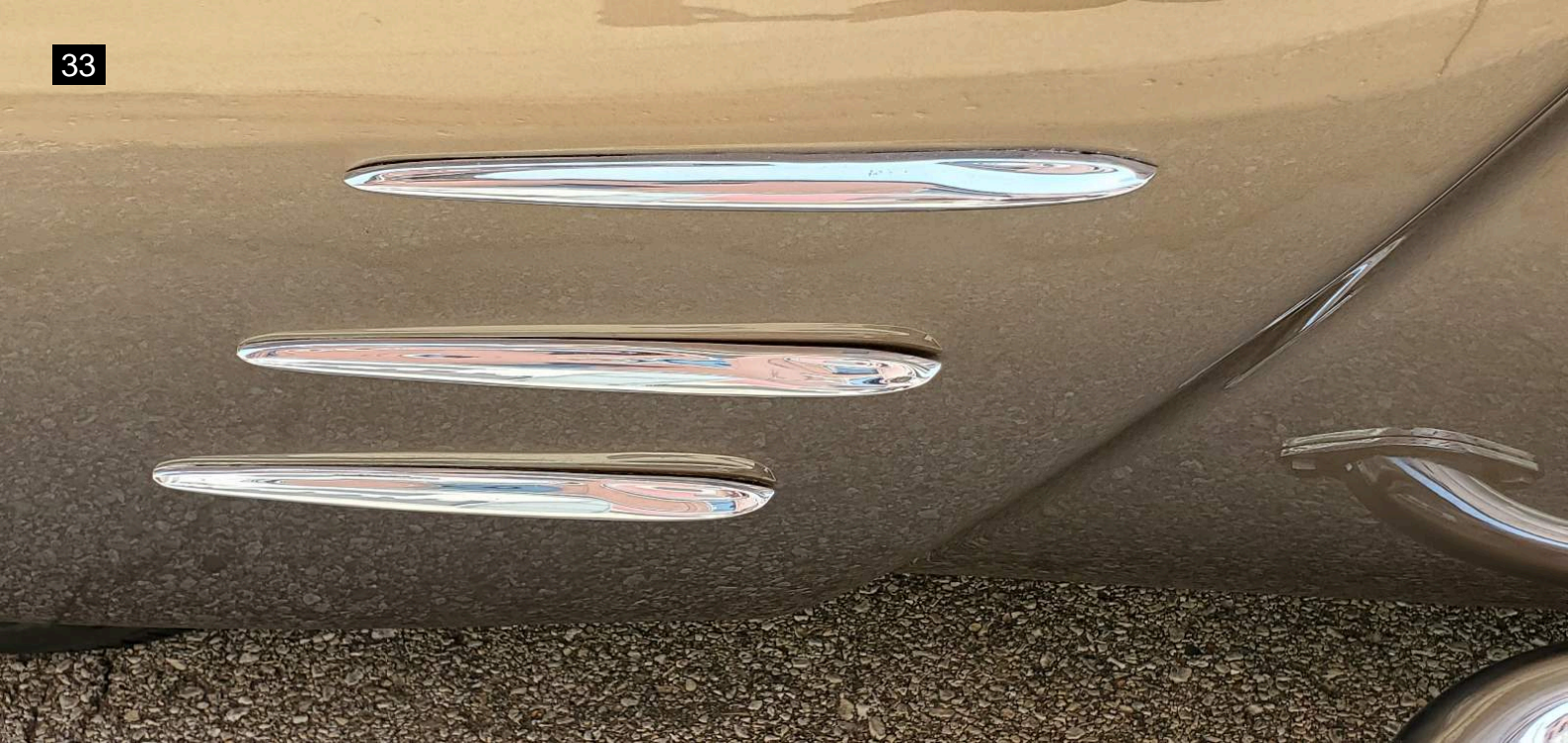














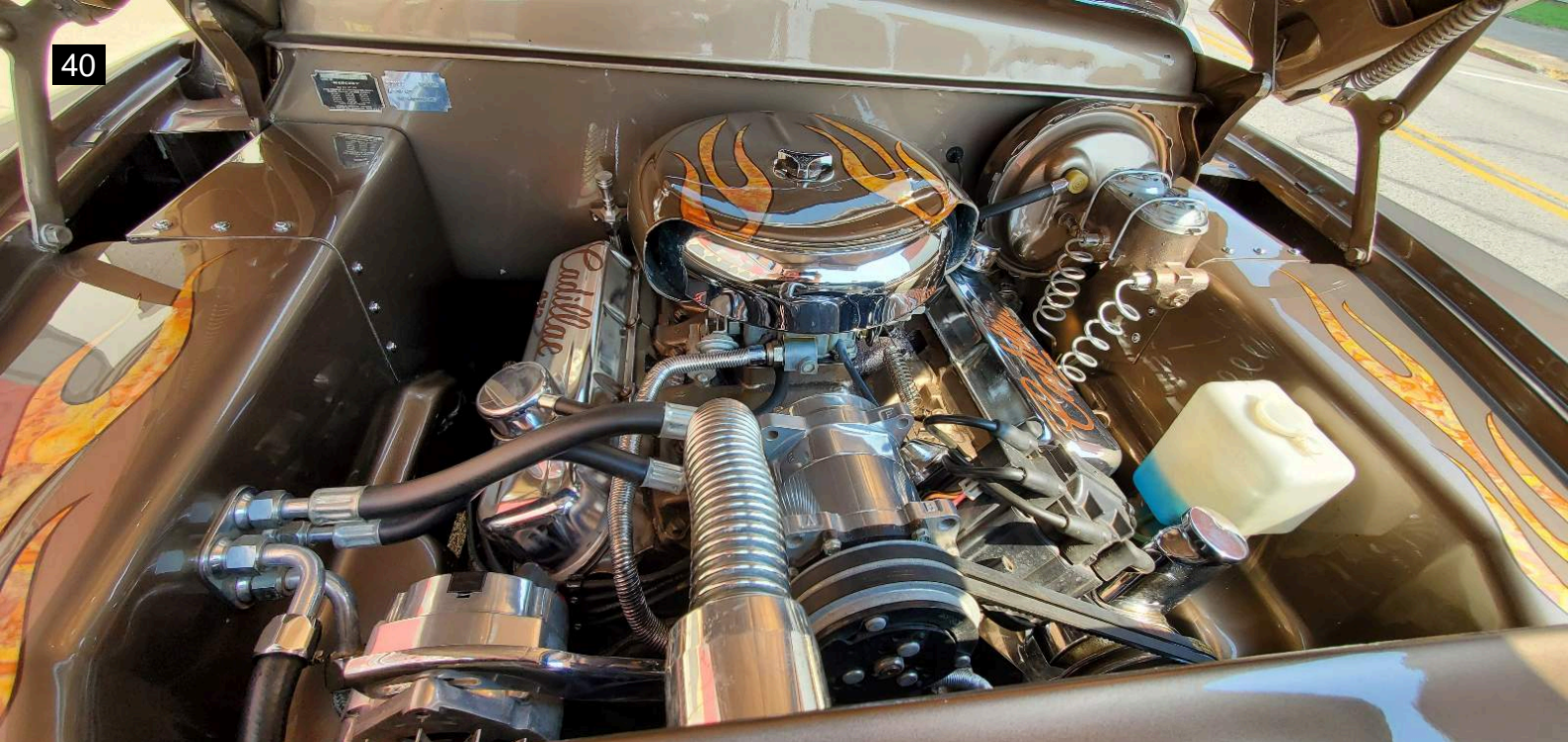




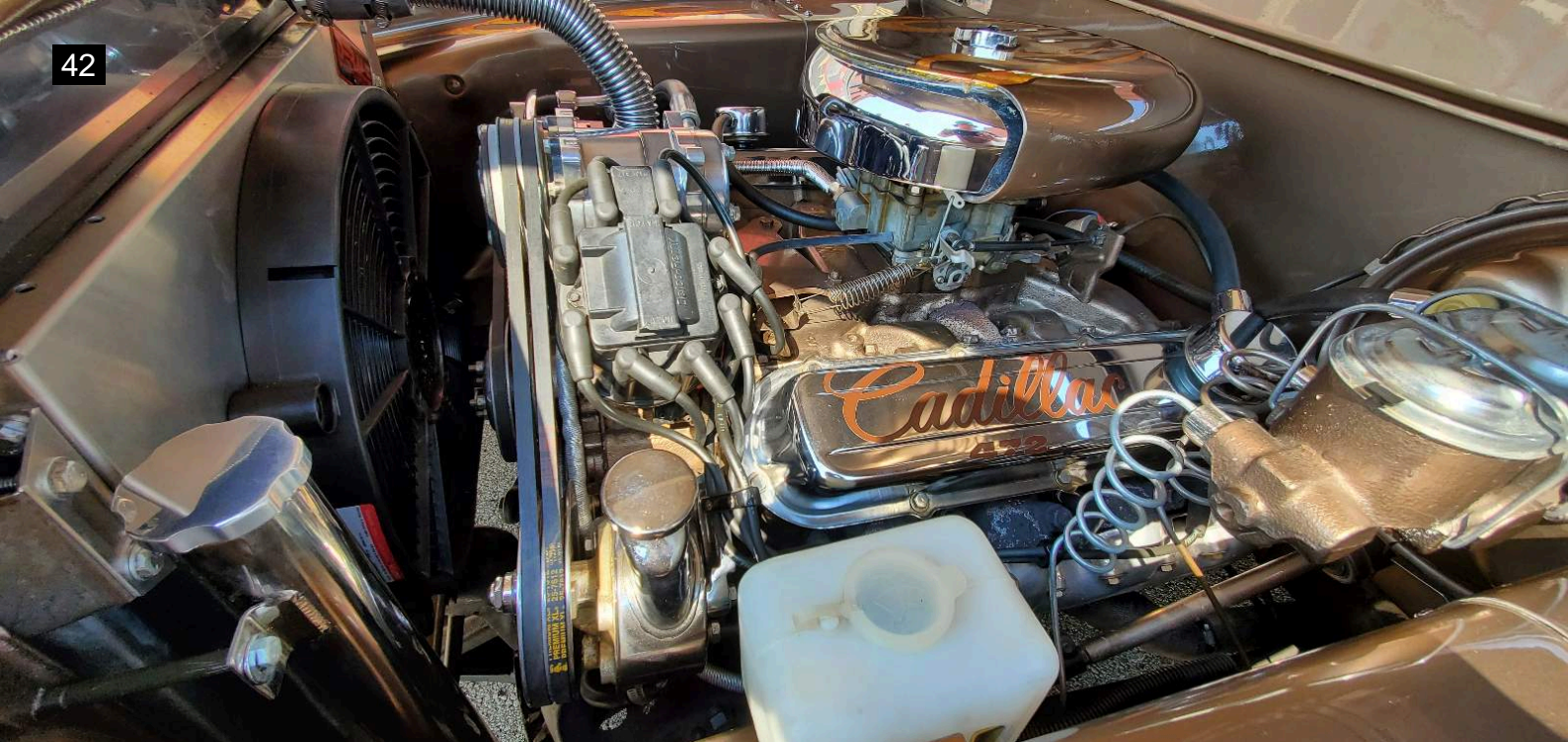


















#51ME43065M#

SERIAL NO

MERCURY

REG. U.S. PAT. OFF.

THIS VEHICLE IS CONSTRUCTED UNDER
UNITED STATES LETTERS PATENT

1975837	2132729	2310416
1975885	2186080	2370170
1998636	2270122	2406933
2035392	2290927	2420333
2035393	2293222	2474992

OTHER PATENTS PENDING

LINCOLN-MERCURY DIVISION
FORD MOTOR CO., DEARBORN, MICH. U.S.A.

STYLE

BODY NO

01-60

D UNDER
PATENT
0416
0179
6933
0333
4992
SION
MICH. U.S.A.

STYLE ME-M72

BODY NO.

01-60-13B-5B

























































































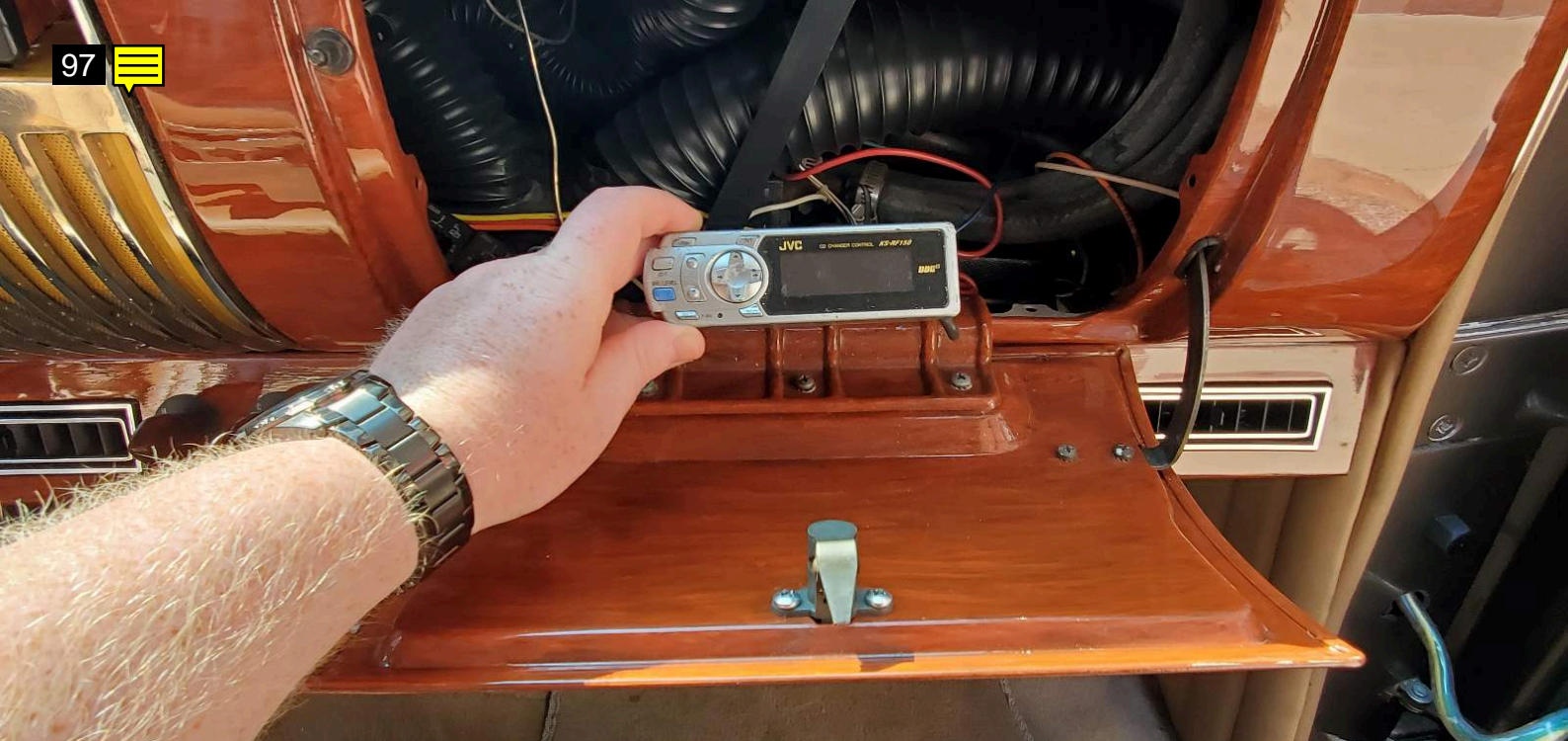






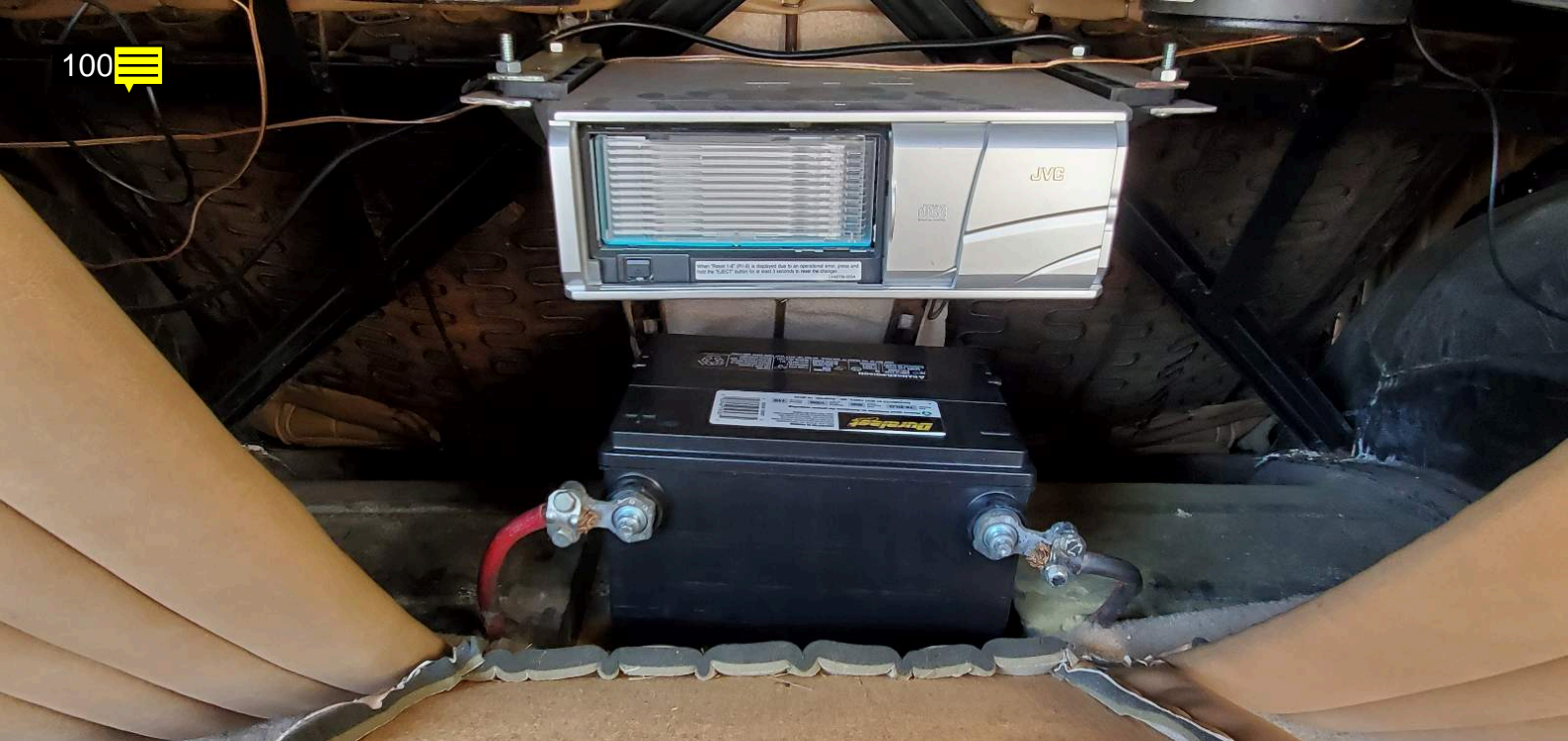








































115













121









Note for Image 89:

Speedometer is stuck and not accurate

Note for Image 97:

Remote for stereo system

Note for Image 100:

CD changer in trunk

Note for Image 108:

Driver headlight

Note for Image 109:

Passenger head light

Note for Image 110:

Driver tail light

Note for Image 111:

Passenger tail light

Note for Image 116:

Driver front

Note for Image 118:

Passenger front

Note for Image 120:

Driver rear

Note for Image 122:

Passenger rear

Note for Image 124:

Fuel leak