

1968 Chevrolet Impala



This Chevy ran but was not driven per its condition. The tires were severely dry rotted and were not safe for a test drive. On the exterior I noted the hood and trunk lids are misaligned. I noted scratches on the bumpers, trim and moldings. The trim showed some dings. I noted pitting and waves in paint on the quarters and doors. The roof has pits in the paint. I noted rust on the frame. The underside has been undercoated. The undercoating can hide rust. I noted surface rust on the undercarriage, trunk gutter and on the doors. I also noted rust on the bolts and suspension. The right front floor has been patched. The door panels were wavy and had body filler. I noted cracked marker lamps on the front of the vehicle. I noted surface scratches and pitting on the bumpers. The side moldings showed dings and scratches. The seals are dry rotted and ripping. The body seals around the windows are showing signs of age and wear. This includes the doors, windows, trunk, and other miscellaneous body seals. They will need replacement. I noted filler on the quarters and doors. There were waves visible in the paint. The hood is misaligned. I noted bubbling paint and rust around the inner shell of the doors. I noted dings and scratches in the chrome.

There is light wear to the seats. The door panels and interior trim looked good overall. I noted work windows, locks, and mirrors. There was no smoke or odd odors. The climate controls worked.

The belts were loose and wobbly on the engine. Exhaust shows some surface rust throughout, but at this time has no leaks and sounds good. The shocks and bushings showed visible wear. The ball joints and tie rods are rusty. I noted an aftermarket air filter and radiator.

As noted, the vehicle is unsafe to drive due to badly dry rotted tires. Due to this, I spent more time going over the vehicle. I found the engine to start and run well. The transmission engaged in both forward and reverse with no issues. The brakes were firm, and held the vehicle properly. A visual inspection of the steering and suspension showed no obvious issues.

Please see below for pictures and more info.

Vehicle Info	
Year - 1968	
Make - Chevrolet	
Model - Impala	
Mileage - 58459	
Transmission - Automatic	
VIN Number - 166478Y100009	
Interior - Cloth	
Interior Color - Black	
Body Color - White	
Engine - 8 Cylinder	
Drive Type - Rear Wheel Drive	
Fuel Type - Gas	

Exterior	
Wiper Blades	✓
Windshield Washer	✓
Body Alignment	✗
The hood and trunk lids are misaligned.	
Scratches	✗
I noted scratches on the bumpers, trim and moldings.	
Dings	✗
The trim showed some dings.	
Dents	✓
Paint Condition	✗
I noted pitting and waves in paint on the quarters and doors. The roof has pits in the paint.	
Body Seals	✗
The seals are dry rotted and ripping. The body seals around the windows are showing signs of age and wear. This includes the doors, windows, trunk, and other miscellaneous body seals. They will need replacement.	
Rust	✗
I noted surface rust on the undercarriage, trunk gutter and on the doors. I also noted rust on the bolts and suspension.	
Exterior Lights	✗
I noted cracked marker lamps on the front of the vehicle.	
Door Mirrors	✓
Bumpers	✗
I noted surface scratches and pitting on the bumpers.	
Side Moldings	✗
The side moldings showed dings and scratches.	
Frame Damage	✗
I noted rust on the frame. The underside has been undercoated. The undercoating can hide rust.	
Glass	✓
Body Filler?	✗

Mechanical	
Air Filter	✓
Battery Condition	✓
Charging System	✓
Cooling Fan Condition	✓
Radiator Cap Sealing Properly	✓
Hoses	✓
Radiator	✓
Engine Coolant	✓
Coolant Leaks	✓
Belts	✗
The belts were loose and wobbly on the engine.	
Power Steering	✓
Steering Fluid	✓
Engine Oil	✓
Engine Fluid Leaks	✓
Transmission Fluid	✓
Transmission Leaks	✓
Brake System	✓
Brake Fluid Leaks	✓
Differential leaks	✓
Muffler System	✗
Exhaust shows some surface rust throughout, but at this time has no leaks and sounds good.	
Shocks and bushings	✗
The shocks and bushings showed visible wear.	
Ball Joints and Tie Rods	✗
The ball joints and tie rods are rusty.	
Modifications	✗
I noted an aftermarket air filter and radiator.	

Road Test	
Road Test	✗
The vehicle is unsafe to drive due to badly dry rotted tires.	
Engine Performance	✓
Engine Starting	✓
TIRES/WHEELS	
Spare Tire	✓
Tire Manufacturer	
Driver's Front - BF Goodrich	
Passenger's Front - BF goodrich	
Driver's Rear - BF goodrich	
Passenger's Rear - BF goodrich	
Tire Size	
Driver's Front - P225/70R15	

I noted filler on the quarters and doors. There were waves visible in the paint.	
Hood	✗
The hood is misaligned.	
Doors	✗
I noted bubbling paint and rust around the inner shell of the doors.	
Floors	✗
The right front floor has been patched.	
Rockers	✓
Quarter Panels	✗
The door panels were wavy and had body filler.	
Chrome	✗
I noted dings and scratches in the chrome.	

Interior	
Steering Wheel	✓
Horn	✓
Seat Condition	✗
There is light wear to the seats.	
Seat Belts	✓
Clock	✓
Radio/Navigation	✓
Inner Door Panels	✓
Window Switches	✓
Window Function	✓
Dash	✓
Sun Visors	✓
Dash Lights	✓
Dash Gauges	✓
Air Conditioning	✓
Heater	✓
Carpet	✓
Floor Mats	✓
Unusual Odors	✓
Headliner	✓
Blower Motor	✓
Interior Trim	✗
I noted a loose trim panel.	
Inner Trunk	✓

Passenger's Front - P225/70R15
Driver's Rear - P225/70R15
Passenger's Rear - P225/70R15
Tire Condition
Driver's Front - Dry Rot
Passenger's Front - Dry Rot
Driver's Rear - Dry Rot
Passenger's Rear - Dry Rot
Wheel Condition
Driver's Front - Curb Rash
Passenger's Front - Curb Rash
Driver's Rear - Curb Rash
Passenger's Rear - Curb Rash
Tire Tread
Driver's Front - 10/32
Passenger's Front - 10/32
Driver's Rear - 10/32
Passenger's Rear - 10/32



10/32 OR MORE
Tires have plenty of tread! (standard)
8/32 OR MORE
Tires have plenty of tread! (low profile)
5/32 TO 7/32
Tires will need replacement soon!
4/32 OR LESS
Tires need replacement!

1



2



3



CERTIFICATE OF TITLE

1 16647 8Y100 009 2 1968 CHE CAP 2 DR.

STANDARD 2 IVORY 2

60.00 03-22-2019

60800 A

EUGENE J KELLEY JR
266 WHEAT RD
VINELAND NJ 08360 9607

1

OWNER DL/CC #:K2397 24371 10712

I HEREBY CERTIFY THAT THE ABOVE INFORMATION IS TRUE AND CORRECT AND THAT THE ABOVE INFORMATION IS BASED ON THE RECORDS OF THE STATE OF NEW JERSEY. I AM NOT PROVIDING ANY GUARANTEE OR WARRANTY FOR THE INFORMATION PROVIDED HEREON.

[Signature]
CLERK

State of New Jersey
OFFICE OF THE CLERK

BA956972



JH VL20190810528

ALTERATION OR ERASURE VOIDS THIS TITLE

KEEP IN SAFE PLACE

VOID IF ALTERED

N/A

N/A

N/A

166478Y100009

5























































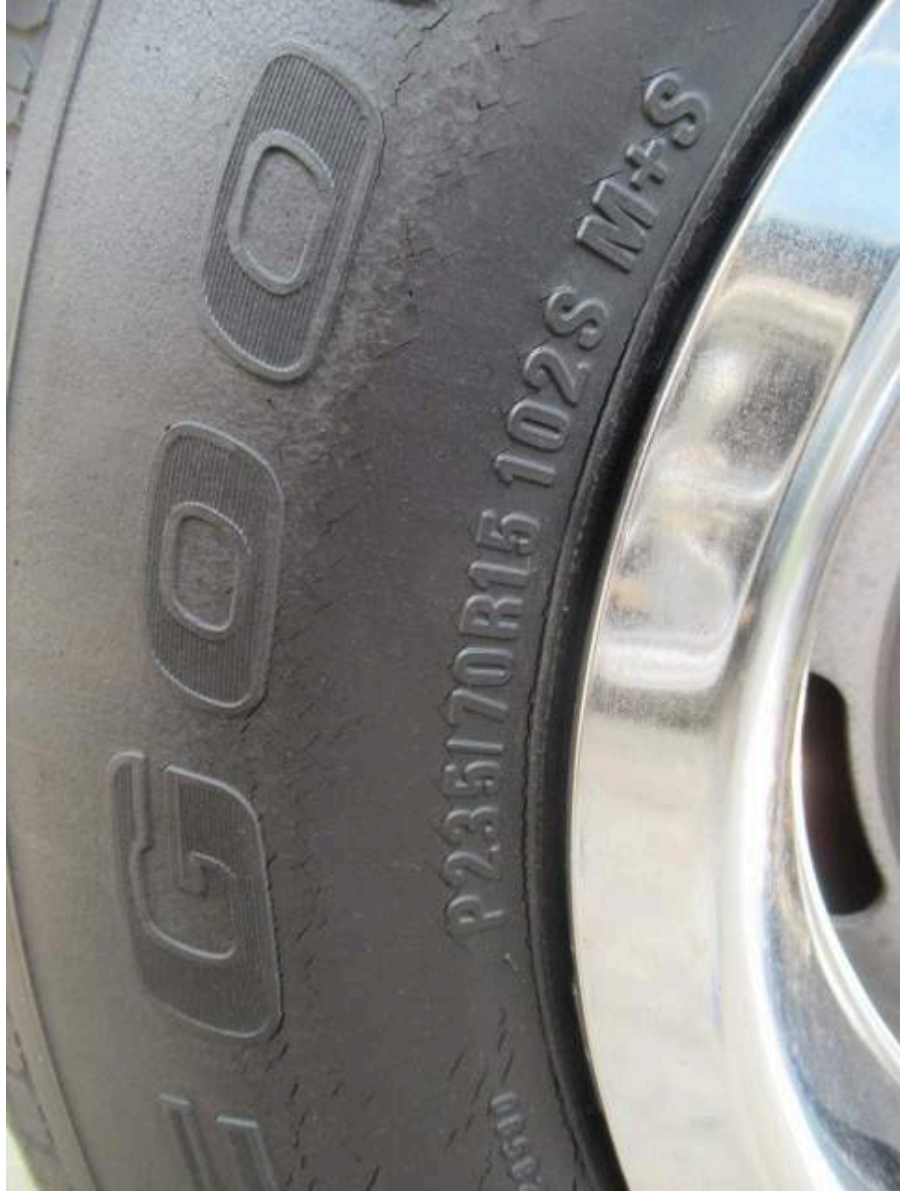
Captiva

































































JACKING INSTRUCTIONS

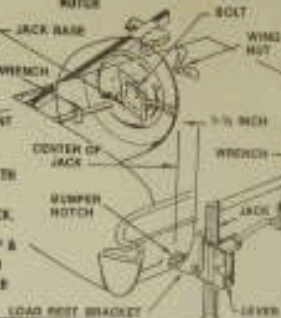
CAUTION: APPLY PARKING BRAKE, BLOCK
DIAGONALLY OPPOSITE WHEEL. DO
NOT GET UNDER CAR WHILE JACK IS
BEING USED.



JACK LOCATION FRONT: INBOARD OF
BUMPER JOINT AT BUMPER NOTCH



JACK LOCATION REAR: OUTBOARD
OF BUMPER JOINT AT BUMPER
NOTCH



WHEEL REMOVAL: REMOVE HUB CAP WITH
WHEEL WRENCH. LOOSEN, BUT DO NOT
REMOVE WHEEL NUTS BEFORE USING JACK.

JACK OPERATION: OPERATE WRENCH UP &
DOWN WITH LEVER AT "UP" POSITION TO
RAISE CAR; "DOWN" POSITION TO LOWER
CAR.

PRINTED IN U.S.A.

9-51-66

PRINT NO. 3003893

































80



30 40 50 60 70 80 90 100

58459

PARK

R N D L2 L1





1968

CHEVROLET CAPRICE

396 Cubic Inch Motor

Automatic Transmission

Factory Air Conditioning,
Power Windows, Power
Heavy duty (Corvette) front
Disk brakes, & rare rear
Defogger.

9th car produced for 68
Model year August 17, 1967
At Wilmington Delaware Plant.

Owner Request Statement













































































08C CC57

68-16647 BW00009

807E C7503 TT













USE ONLY SE OP & 21

MOD FULL











Note for Image 1:

front

Note for Image 2:

right front

Note for Image 3:

title

Note for Image 4:

dash vin

Note for Image 5:

left front

Note for Image 6:

tag

Note for Image 7:

emblem

Note for Image 8:

right front wheel

Note for Image 9:

tire

Note for Image 10:

Antenna missing

Note for Image 11:

front windshield good

Note for Image 12:

roof has pits

Note for Image 13:

right side

Note for Image 14:

front underside

Note for Image 15:

rusty suspension

Note for Image 16:

body filler on right fender

Note for Image 17:
cracked lens

Note for Image 18:
front under side

Note for Image 19:
left front suspension

Note for Image 20:
underside

Note for Image 21:
left side

Note for Image 22:
left front wheel

Note for Image 23:
tire

Note for Image 24:
left emblem

Note for Image 25:
frame

Note for Image 26:
undercoat falling off

Note for Image 27:
roof pitting in paint

Note for Image 28:
left glass

Note for Image 29:
hood misaligned

Note for Image 30:
hood misaligned

Note for Image 31:
door gaps ok

Note for Image 32:
nameplate

Note for Image 33:

right rear

Note for Image 34:

rear corner

Note for Image 35:

right rear wheel

Note for Image 36:

tire

Note for Image 37:

severe dry rot

Note for Image 38:

underside

Note for Image 39:

underside frame

Note for Image 40:

underside

Note for Image 41:

rear

Note for Image 42:

rear fuel tank

Note for Image 43:

left rear

Note for Image 44:

left corner view

Note for Image 45:

paint overspray

Note for Image 46:

exhaust dual

Note for Image 47:

paint overspray

Note for Image 48:

fuel neck ok

Note for Image 49:
scratches rear bumper

Note for Image 50:
trunk misaligned

Note for Image 51:
trunk misaligned

Note for Image 52:
left rear wheel

Note for Image 53:
tire

Note for Image 54:
dry rot

Note for Image 55:
underside

Note for Image 56:
right front floor patched

Note for Image 57:
underside

Note for Image 58:
undercarriage

Note for Image 59:
headers

Note for Image 60:
rusty underside

Note for Image 61:
rusty underside

Note for Image 62:
opened trunk

Note for Image 63:
sticker

Note for Image 64:
loads of stuff in trunk

Note for Image 65:

trunk spray

Note for Image 66:

spare

Note for Image 67:

trunk spray

Note for Image 68:

trunk full

Note for Image 69:

rust and peeling paint

Note for Image 70:

gutter peeling paint

Note for Image 71:

panels out of alignment

Note for Image 72:

out of alignment

Note for Image 73:

left door interior

Note for Image 74:

interior

Note for Image 75:

door jamb

Note for Image 76:

bottom left door

Note for Image 77:

inside door to fender

Note for Image 78:

dry rotted weatherstrip

Note for Image 79:

interior

Note for Image 80:

miles

Note for Image 81:

rear seat

Note for Image 82:

info book

Note for Image 83:

loose trim panel

Note for Image 84:

rear glass

Note for Image 85:

rear of front seat

Note for Image 86:

headliner

Note for Image 87:

dash

Note for Image 88:

dash

Note for Image 89:

gauges

Note for Image 90:

inside right front door to fender

Note for Image 91:

inside left fender

Note for Image 92:

right door trim

Note for Image 93:

interior

Note for Image 94:

right front seat

Note for Image 95:

rear seat

Note for Image 96:

right door jamb

Note for Image 97:
door to fender hinges

Note for Image 98:
bottom right door

Note for Image 99:
bubbles in paint

Note for Image 100:
rust in jamb

Note for Image 101:
weatherstrip peeling

Note for Image 102:
trim dry rotted

Note for Image 103:
glove box papers

Note for Image 104:
engine

Note for Image 105:
engine

Note for Image 106:
engine

Note for Image 107:
engine

Note for Image 108:
engine

Note for Image 109:
wash bottle

Note for Image 110:
power brakes

Note for Image 111:
intake manifold aftermarket

Note for Image 112:
after market radiator

Note for Image 113:

belts look good

Note for Image 114:

battery

Note for Image 115:

air condition working

Note for Image 116:

distributor looks good

Note for Image 117:

engine

Note for Image 118:

engine compartment

Note for Image 119:

inside grille

Note for Image 120:

engine compartment tag

Note for Image 121:

wipers good

Note for Image 122:

engine block number

Note for Image 123:

dash working

Note for Image 124:

gauges

Note for Image 125:

gauges

Note for Image 126:

radio works

Note for Image 127:

engine oil good

Note for Image 128:

trans fluid good

Note for Image 129:
tread

Note for Image 130:
tread

Note for Image 131:
tread

Note for Image 132:
tread