



**INDUSTRY APPLICATIONS**

AWP • Floor Care • Golf / EV • Marine • Material Handling • Oil & Gas • RV • Solar • Trucking • UPS

### Fullriver DC Series Specifications

Model	Group	Capacity (minutes)		Capacity (AH)			Cranking (Amps)		Terminal Type	Dimensions (in / mm)			Weight (lbs / kg)
		@ 25 Amps	@ 75 Amps	@ 5hr Rate	@ 20hr Rate	@ 100hr Rate	CA @ 32°F	CCA @ 0°F		Length	Width	Height	
<b>▼ 2 Volt Deep Cycle Batteries</b>													
DC1150-2	L16	2235	658	945	1150	1275	5400	4500	M10	11.61 (295)	7.05 (179)	16.18 (411)	125.66 (57.0)
<b>▼ 6 Volt Deep Cycle Batteries</b>													
DC220-6	27	425	112	180	220	242	1170	990	M8	12.05 (306)	6.85 (174)	8.90 (226)	70.99 (32.2)
DC224-6	GC2	441	113	179	224	250	1080	900	M8 + TP08	10.24 (260)	7.09 (180)	9.88 (251)	67.90 (30.8)
DC245-6	DIN	457	120	198	245	270	1120	930	AP	9.61 (244)	7.48 (190)	10.83 (275)	72.75 (33.0)
DC250-6	GC2	531	135	204	250	275	1160	960	M8 + TP08	10.31 (262)	7.13 (181)	10.71 (272)	78.48 (35.6)
DC335-6	902 / J305	751	184	274	335	370	1560	1300	DT	11.61 (295)	7.01 (178)	14.41 (366)	102.74 (46.6)
DC400-6	903 / L16	885	229	340	415	460	1800	1500	DT	11.61 (295)	7.05 (179)	16.69 (424)	123.46 (56.0)
<b>▼ 8 Volt Deep Cycle Batteries</b>													
DC160-8	GC8	315	112	131	160	176	1050	865	M8	10.24 (260)	7.17 (182)	10.71 (272)	71.21 (32.3)
DC180-8	GC8	335	125	148	180	198	1200	1000	M8	10.24 (260)	7.17 (182)	10.71 (272)	74.96 (34.0)
DC200-8	GC8H	390	140	164	200	220	1420	1150	M8	10.24 (260)	7.17 (182)	11.77 (299)	83.11 (37.7)
<b>▼ 12 Volt Deep Cycle Batteries</b>													
DC35-12	U1	52	-	29	35	39	230	190	M6	7.72 (196)	5.16 (131)	6.57 (167)	23.81 (10.8)
DC55-12	22NF	96	21	45	55	61	480	400	M6	9.02 (229)	5.43 (138)	8.35 (212)	39.02 (17.7)
DC85-12	24	145	34	70	85	95	600	510	M8 + TP08	10.24 (260)	6.65 (169)	8.46 (215)	55.12 (25.0)
DC105-12	27	175	43	86	105	115	820	680	M8 + TP08	12.09 (307)	6.65 (169)	8.46 (215)	67.02 (30.4)
DC115-12	31	200	45	91	115	130	910	760	M8 + TP08	12.91 (328)	6.77 (172)	8.66(220)	72.31 (32.8)
DC140-12	DIN	260	62	115	140	154	950	795	M8 + TP08	13.43 (341)	6.77 (172)	11.14 (283)	95.46 (43.3)
DC150-12	GC12	295	80	130	150	165	1050	900	M8 + TP08	12.87 (327)	7.17 (182)	10.75 (273)	93.80 (43.0)
DC160-12	N/A	300	82	130	160	176	1070	910	M8	19.06 (484)	6.73 (171)	9.49 (241)	102.07 (46.3)
DC210-12	4D	400	105	172	210	231	1425	1180	LT	20.87 (530)	8.23 (209)	8.58 (218)	133.38 (60.5)
DC215-12	921 / J185	420	110	172	215	240	1200	1000	DTW	15.00 (381)	7.01 (178)	14.61 (371)	131.84 (59.8)
DC260-12	8D	578	145	214	260	286	1830	1525	LT	20.51 (521)	10.59 (269)	8.82 (224)	170.64 (77.4)

### Battery Terminal Configurations

To ensure quality and durability, Fullriver Battery utilizes the highest grade lead and brass when manufacturing our battery terminals.



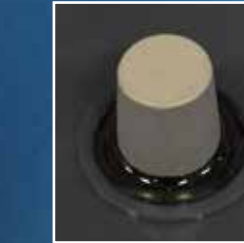
**M Terminal**  
(M6 or M8)



**TP Brass AP**  
(TP07 or TP08)



**AP & Stud Terminal**  
(DT)



**Automotive Post**  
(AP)



**L Terminal**  
(LT)

*All batteries ship with appropriate washer and bolt hardware. Select batteries with the "M Terminal" are provided with the appropriate "Brass TP" screw-in AP posts. The M6 comes with the TP07 and the M8 comes with the TP08. See the "Terminal Type" column the table above, or contact us for up-to-date product information.*

  
**Fullriver Battery USA**  
[www.fullriverbattery.com](http://www.fullriverbattery.com)  
 (800) 522-8191 Toll Free

  
**Fullriver Europe**  
[www.fullriverbattery.com](http://www.fullriverbattery.com)  
 +32 3380-0000

  
**Fullriver Asia**  
[www.fullriverbattery.com](http://www.fullriverbattery.com)  
 +852 2987-5895



**DC SERIES**

SEALED / MAINTENANCE-FREE  
**DEEP CYCLE AGM BATTERIES**





MAINTENANCE-FREE



NON-HAZARDOUS



SPILL-PROOF



CORROSION-FREE



DEEP CYCLE



LONG LIFE



HIGH CAPACITY



WEATHER RESISTANT



CLEAN-GREEN

## The Beauty of our AGM Battery is you Simply 'Set it' and 'Forget it'!

Fullriver DC Series Deep Cycle batteries are designed to be deeply discharged and recharged hundreds of times. They are designed and built differently than automotive starting batteries. They use more lead, heavier plates and other proprietary materials that enable them to deliver more power and capacity over many life cycles. Deep Cycle batteries are used in many applications including; Boats, RVs, Solar and Wind Power, Electric Vehicles, Electric Golf Cars, Floor Cleaning machines, Aerial Work Platforms and many more. Our DC Series batteries provide the performance and life of a true deep cycle battery with all the convenience and benefits of being maintenance free & non-hazardous.

## Nationwide Distribution Network

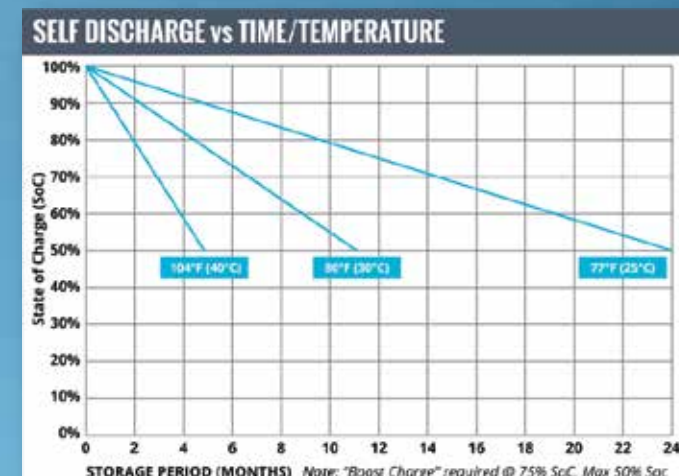
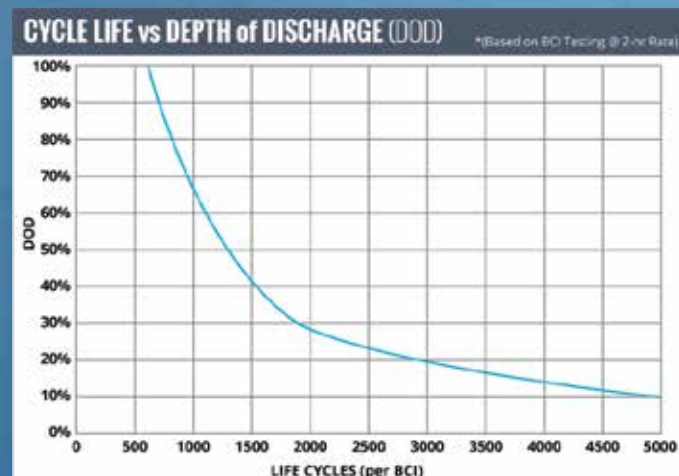
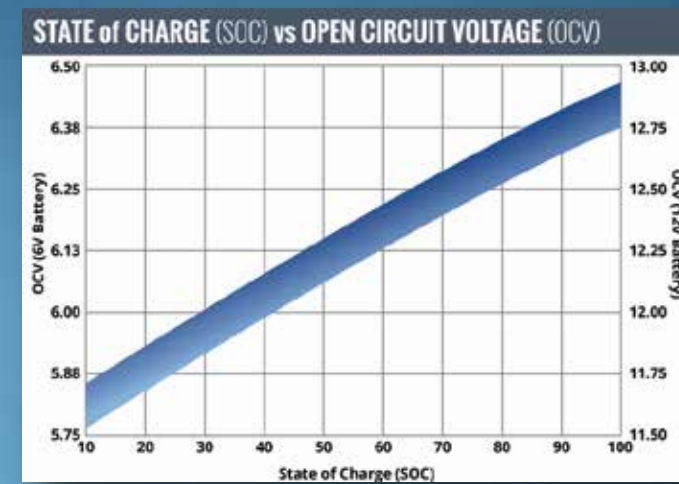
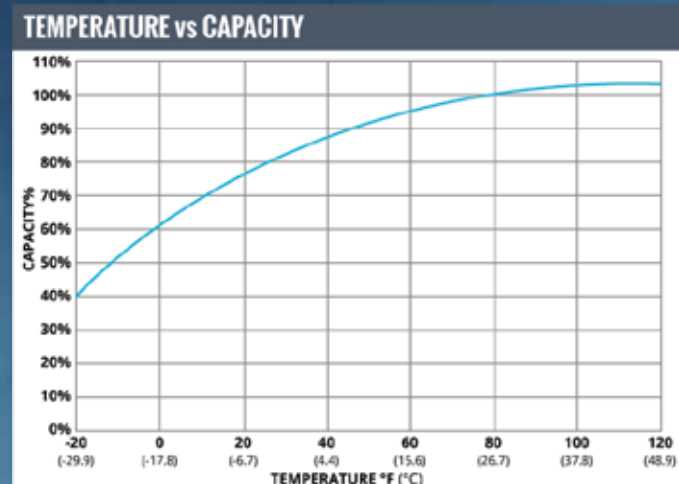
We have authorized distributors across the United States. Our network of distributors and specialists would be happy to assist you in selecting the right Fullriver battery for your application.

To locate one of our distributors nearest you, please visit our website at [www.fullriverbattery.com](http://www.fullriverbattery.com) or call us at (800) 522-8191.



Please visit our website for a complete distributor list

[www.fullriverbattery.com](http://www.fullriverbattery.com)



## The Features & Benefits of a Fullriver Battery...

- Maintenance-free, spill-proof, sealed construction, provides an environmentally friendly, non-hazardous battery that is DOT, IATA, ICAO and IMDG approved for land, sea and air transportation.
- Environmentally conscience, jar-formed, high-density plates undergo a 10-day curing process for superior bonding of the paste to the heavy duty lead, calcium and tin grids ensures fully formed, voltage matched plates for long life, true deep cycle functionality and recovery.
- Compression of highly micro-porous, glass mat separator provides superior contact between electrolyte and plates for maximizing capacity while providing extreme shock & vibration resistance.
- Our fire retardant ABS case, cover resins, and epoxy seals combine to form a truly safe, sealed battery that is non-hazardous, highly durable, and capable of being mounted in any direction except inverted.

We produce only Sealed, Maintenance-Free, Non-Hazardous and Non-Spillable batteries that will provide you with a cleaner and greener alternative. You'll never need to add water to a Fullriver battery or worry about gassing or spilling of acid. Fullriver batteries can be operated upright or on their side, they are leak proof and, shock and vibration resistant.

Conventional wet/flooded batteries are filled with liquid sulfuric acid, which can spill or leak if the plastic case is punctured. They also emit hazardous hydrogen gases during charging. They are classified as hazardous and dangerous goods, making them more difficult and costly to transport. All of our batteries are safe for air, sea and ground transportation. We carry various government approvals such as DOT, IATA, IMDG and ICAO, so you never have to worry about transporting or receiving our batteries.

Consumers and industries around the globe are becoming more environmentally conscious every day. We are proud to be able to give you the peace of mind that you are helping to provide a clean and green solution to your energy needs, with the performance and power that you are looking for. We are your Clean-Green Energy Solution.



CLEAN-GREEN

**ISO** 9001:2008 Certified - Quality Management System  
 14001:2004 Certified - Environmental Management System  
 18001:2007 Certified - Occupational Health & Safety Management System

DELIVERY APPROVED! LAND, SEA & AIR Fullriver batteries are sealed lead acid batteries made with Absorbed Glass Mat (AGM) technology. The electrolyte is absorbed into the fiberglass separator material rather than in a free-flowing liquid form. Fullriver batteries are non-spillable electric storage batteries. They are exempted from the requirements of DOT's hazardous materials regulations, since they adhere to the requirements of code 49 CFR Section 173.159(D) - (CLASSIFIED APPROVED: DOT, CFR, HMR49, IATA, ICAO67, IMDG27)