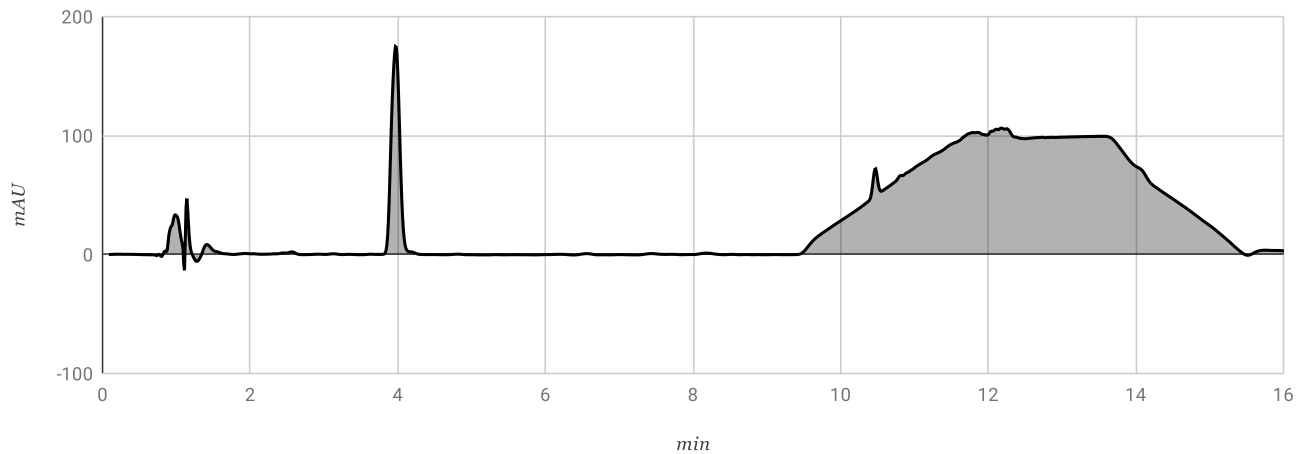




Sample Information

Sample Name:	19167-01.Sleep_Blend	CBD Concentration:	4.61%
Method Filename:	HPLCalibration0619.lcm	* Potential CBD Concentration:	5.43%
Batch Filename:	07092019\Samples3.lcb	* Potential CBD Concentration represents total CBD and CBDA (with adjustments for mass conversion)	
Vial #:	67	THC Concentration:	0.06%
Injection Vol (uL):	15		
Date Processed:	7/10/2019		
Time Processed:	9:33:40 AM		

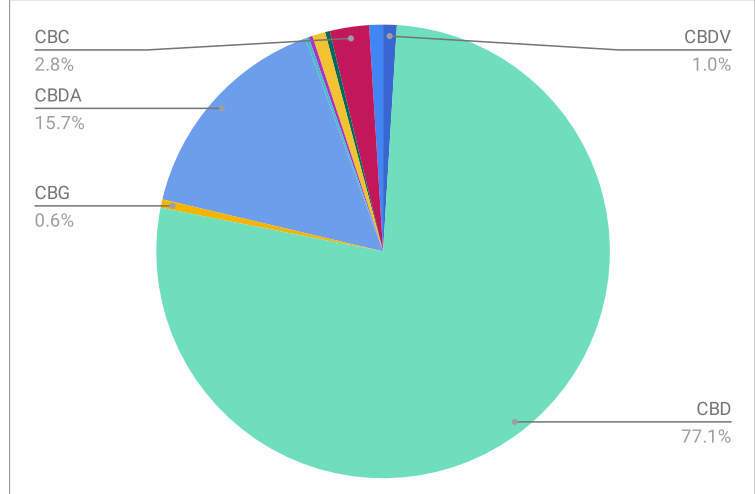
HPLC Chromatogram



Peak Table

Analyte	Retention Time	Conc. (%)
CBDV	2.565	0.058
CBD	3.972	4.607
CBG	4.165	0.036
THCV	--	ND
CBDA	4.812	0.94
CBGA	6.189	0.015
CBN	6.562	0.016
THC	8.184	0.056
THCVA	--	ND
D8-THC	--	ND
CBL	0	0.02
CBC	10.471	0.167
CBNA	10.843	0.059
THCA	--	ND

Relative Cannabinoid Concentrations



Centuria Foods, Inc.

Analysis Conducted By: Angelina Martinez