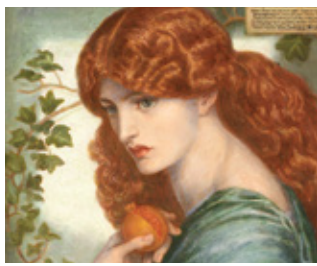


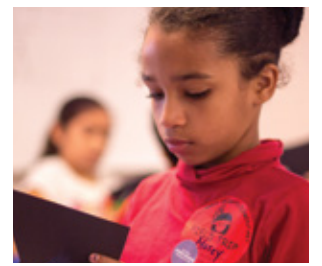
Radical

6 | Up Next



Field Trip

10 | Art Works



SUMMER | 2019

ARTNOW

San Antonio Museum of Art



Anatomy of...

[The Entombment]

Where to Find It: European Galleries, Fourth Floor, East Tower

Curator: William Keyse Rudolph, PhD, Chief Curator and The Marie and Hugh Halff Curator of American and European Art

Who are these people?

Christ, in the center, is being lowered into the tomb by Joseph of Arimathea—a disciple who asked Pilate for permission to bury Jesus properly in his own tomb—on the right. Nicodemus assists on the left. Mary Magdalene holds Christ's right hand while the Virgin Mary prays. On the far right, St. John looks on, his hand held to his chin.

What's it made of?

This fifteenth-century relief is made of alabaster, a fine-grained mineral that has been used for centuries for sculptures, carvings, and ornaments. Alabaster is softer and easier to carve than ivory and hardens upon exposure to air.



What's this red color?

Alabaster is generally white, but it can be dyed or painted—traces of the original pigment are visible here.

Where would you have seen this in the fifteenth century?

This sculpture would have been part of an altar, one of many panels set below architectural canopies within painted wooden frames. The Seven Joys of the Virgin and the Passion of Christ—the subject of this piece—were common themes for the altar pieces.

Where is it from?

Nottingham, England. By the fifteenth century, the city was a major center for alabaster carving due to its proximity to major quarries. A thriving export trade sent large numbers of Nottingham Group alabaster altar pieces throughout Europe—a great example of the global art market in Renaissance Europe.

Above:

Nottingham Group, *The Entombment*, 15th century, Painted alabaster, h. 21 ¼ in. (54 cm); w. 16 ¼ in. (41.3 cm); d. 3 ½ in. (8.9 cm), Purchased with funds provided by the Sarah Campbell Blaffer Foundation, 97.21, Photography by Peggy Tenison.

2018–2019
BOARD of TRUSTEES

VOTING TRUSTEES

- Martha S. Avant
Brenda Betts
Kevin Covey
Jorge del Alamo
Dale F. Dorn
John Eadie
Thomas Edson
Claire Golden
Chave Gonzaba
Marie Halff, Chair
Edward A. Hart, Vice Chair
Rose Marie Hendry
Christian Herff
Cecilia E. Herrera
Karen H. Herrmann
Lamont Jefferson
Rosario Laird
Kim Lewis
Martha Lopez
Jane H. Macon
Bruce Mitchell, Vice Chair
Katherine Moore McAllen
Gregg Muenster, Secretary
Dacia Napier
Toby O'Connor
William Dean Rasco
Roxana M. Richardson
Corinna Richter
Elizabeth McAllen Roberts
William Scanlan Jr.
Jenny Schimpff
A. Kate Sheerin
Beth Smith
Nancy Steves
Ruth Eilene Sullivan
Sidney Swearingen
Rich Walsh
Mark E. Watson III
W. Richey Wyatt

LIFE TRUSTEES

- Lenora P. Brown
Lila Cockrell
Emory Hamilton
Karen Hixon
Claudia Huntington
Peggy Mays
Banks M. Smith

HONORARY TRUSTEES

- Margery Block
Anthony Edwards
Richard Huber
Roberta Huber
Moises Micha
Henry R. Muñoz III
Nelson A. Rockefeller Jr.
Linda Whitacre
Karen Lee Zachry

EX OFFICIO TRUSTEES

- Katherine C. Lubert, PhD



Table of Contents

- 4 Men of Steel, Women of Wonder
6 Up Next: Victorian Radicals
7 New & Noted
8 ArtWorks: How Learning Happens at the Museum
9 Art Scene
10 Keeping Up with Jones Avenue
11 Give & Join

From the Director

Dear Members,

Super art is on its way!

Our summer special exhibition, *Men of Steel, Women of Wonder*, examines the way superheroes and heroines personify our collective hopes and dreams. From their earliest incarnations in 1930s comic books to last year’s megahit *Black Panther*, it’s no wonder so many artists have found inspiration in the characters of Superman and Wonder Woman. We think the contemporary interpretations of these cultural icons featured in the exhibition will provoke powerful conversations, and we can’t wait to hear what you have to say about them.

We’re spending Memorial Day celebrating the tenth anniversary of the Museum Reach. Check out our newly formatted calendar in this issue for four times and programs throughout the weekend. Our founders envisioned the Museum as the heart of a thriving River Walk almost forty years ago, and we are proud to realize that dream today.

Some of our own superheroes—our curators—have been hard at work creating change in our permanent collection galleries. Make sure to take the time to visit the re-installed American galleries, along with beautiful new displays of Chinese robes and contemporary Japanese ceramics in the Asian wing.

We know we have super art, but we also have super members! You make it all possible, and we appreciate your support.

See you at the Museum and on the Museum Reach,

Katie

Katherine C. Lubert, PhD
The Kelso Director



Cover:
Mel Ramos
Wonder Woman (detail), 1962
Oil on canvas
50 x 44 in.
Rochelle and Darren Leininger Family Collection

Fahamu Pecou
Nunna My Heros: After Barkley Hendricks' 'Icon for My Man Superman,'
1969 (detail), 2011
Acrylic, gold leaf, and oil stick on canvas
63 x 49 1/2 in. (160 x 125.7 cm)
Collection of the Nasher Museum of Art at Duke University.
Gift of Marjorie and Michael Levine, 2012.8.1. © Fahamu Pecou.
Photo by Peter Paul Geoffrion.



MEMBERS MAGAZINE

EDITOR
Cary Marriott

MANAGING EDITOR
Tatiana Herrera-Schneider

CONTRIBUTING EDITOR
Betsy Beckmann

EDITORIAL ASSISTANT
Emilie Dujour

DESIGNER
DVS Design

PHOTOGRAPHY: Betsy Beckmann, Elizabeth Leland,
Parish Photography, Peggy Tenison

MEN OF STEEL WOMEN OF WONDER

JUNE 21—SEPTEMBER 1, 2019 | COWDEN GALLERY



CONSIDER THE SUPERHERO. *Men of Steel, Women of Wonder* explores art-world responses to Superman and Wonder Woman, tracking the characters from their origins in the 1930s and '40s to their interpretation by a wide range of contemporary artists.

Through thoughtful reconsideration of these American icons, *Men of Steel, Women of Wonder* explores feminism, racial discrimination, gender, sexuality, immigration concerns, ideas of national identity, and the United States' ethical responsibilities in global politics.

The exhibition features more than seventy paintings, photographs, installations, videos, sculptures, and performance art pieces by fifty artists, including Renée Cox, Mel Ramos, Laurie Anderson, Mike Kelley, Jim Shaw, Dara Birnbaum, Roger Shimomura, Mel Casas, Enrique Chagoya, Michael Ray Charles, Raymond Pettibon, Pope.L, and Norman Rockwell.

Organized thematically, the exhibition opens with "The Heroes We Know," which features familiar depictions of Superman and Wonder Woman. "Origin Stories" places these characters in the contexts of their emergence during the Great Depression and World War II. "Glimpsing Humanity" considers Superman and Wonder Woman as American gods, much like Zeus and Hera of Greek mythology. Artists frame these heroes as powerful symbols to respect (or fear), yet also explore the vulnerabilities that make them seem human. The exhibition concludes with "Defender of Innocents," in which artists explore the ethical and moral values these characters represent.

KNOW MORE

Member Preview Party

Thursday, June 20 | 6:30–8:00 p.m.
Tickets: samuseum.org/calendar

Opening Weekend Tours

Friday & Saturday, June 21 & 22 | 12:00 & 1:00 p.m.
Sunday, June 23 | 12:00 p.m.



"This exhibition takes a deep look at some of our most celebrated cultural icons, revealing how Superman and Wonder Woman have shaped American society and prompted insightful responses from contemporary artists," said SAMA presenting curator Lana Meador. "The Museum is thrilled to share this thought-provoking exhibition with San Antonio."

A full-color catalog, published with the University of Arkansas Press, will accompany the exhibition.

Men of Steel, Women of Wonder is organized by Crystal Bridges Museum of American Art, Bentonville, Arkansas, and curated by Alejo Benedetti. This exhibition is generously funded by The Brown Foundation, Inc. and The Elizabeth Huth Coates Charitable Foundation of 1992, and is supported by the city of San Antonio's Department of Arts and Culture.

Opposite Page:
Jason Bard Yarmosky
Wintered Fields, 2016
Oil on canvas
72 x 144 in.
Courtesy of the artist

Above and Page 3 Detail:
Robert Pruitt
SUP, 2018
Conte charcoal on coffee stained paper
50" x 38" (Unframed)
Courtesy of the artist and Koplin Del Rio Gallery

Top Right:
Reneé Cox
Chillin' with Liberty (from the *Rajé* series), 1998
Cibachrome print
60 x 48 in.
Courtesy of the artist
Photo: Long Gallery

Right:
Francis Criss
Day Shift, 1943
Oil on canvas
47 1/8 x 38 1/8 x 2 3/8 in.
Crystal Bridges Museum of American Art,
Bentonville, Arkansas, 2007.182
Photo: Dwight Primiano



Radicals

➤ **IN 1848 SEVEN YOUNG ART STUDENTS**, led by Dante Gabriel Rossetti, John Everett Millais, and William Holman Hunt, founded the Pre-Raphaelite Brotherhood in London. Like other avant-garde groups in the nineteenth century—for instance, the Realists and Impressionists in France—they challenged the traditional style of academic painting. These British artists called themselves “Pre-Raphaelite” to express their admiration for the simplicity and clarity of medieval European art before Raphael. They focused on contemporary life in nineteenth-century England, which was undergoing rapid change, and explored their subjects with a social conscience, stressing the value of the handmade and the relationship between nature, art, and humanity in the industrial age.

Victorian Radicals, drawn from the English city of Birmingham’s rich collection, celebrates the dynamic period in art from 1840 to 1910. It begins with the Pre-Raphaelites and carries through three generations of artistic revolution. In addition to Rossetti, Hunt, and Millais, the exhibition features other notable artists such as Ford Madox Brown, Edward Burne-Jones, William Morris, and Elizabeth Siddall. The artworks represent the full range of the era’s avant-garde practices and include paintings, drawings, watercolors, and illustrations in printed books and magazines alongside outstanding works of decorative art: ceramics, glass, textiles, silver, and metalwork.

“The extraordinary works of art in *Victorian Radicals* contain some of the most famous images that were made in the second half of the nineteenth century in England—from mysterious damsels to mythological stories to hard-hitting explorations of contemporary life at a time of rapid social and industrial change,” said William Keyse Rudolph, PhD, Chief Curator and the Marie and Hugh Halff Curator of American and European Art. “Besides the paintings, the rich array of decorative arts testifies to the imagination of these artists who totally changed the art world for half a century in Great Britain.”

Victorian Radicals: From the Pre-Raphaelites to the Arts & Crafts Movement is organized by the American Federation of Arts and Birmingham Museums Trust. This exhibition is supported by a grant from the National Endowment for the Arts. Additional funding provided by Clare McKeon and the Dr. Lee McCormick Edwards Charitable Foundation.

This exhibition is is generously funded in San Antonio by The Brown Foundation, Inc. and The Elizabeth Huth Coates Charitable Foundation of 1992, and supported by the City of San Antonio’s Department of Arts & Culture.

Victorian Radicals: From the Pre-Raphaelites to the Arts & Crafts Movement

October 11, 2019–January 5, 2020
Cowden Gallery

Top Right and Cover Detail:
Dante Gabriel Rossetti
Proserpine, 1881–82
Oil on canvas
39 9/16 x 24 3/16 in.
Presented by the Trustees of the Public Picture Gallery Fund, 1927
© Birmingham Museums Trust
Courtesy American Federation of Arts

Bottom Right and Page 3 Detail:
Designed by William Frend De Morgan, manufactured by
Merton Abbey Pottery
Peacock vase, ca. 1885
Earthenware, thrown and painted in colors over white slip
13 9/16 x 4 1/2 in.
Presented by Miss Bridget D'Oyly Carte
© Birmingham Museums Trust
Courtesy American Federation of Arts



Folk Art Showcased in Boston

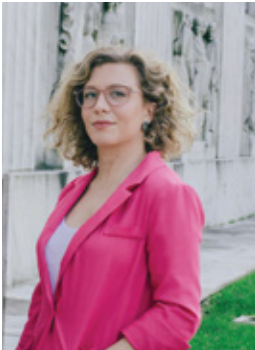
Close to forty works of art from the Museum's renowned Nelson A. Rockefeller Mexican Folk Art Collection are featured in *Frida Kahlo and Arte Popular*, an exhibition at the Museum of Fine Arts, Boston (on view through June 16). Kahlo collected *arte popular* as an act of national pride to show her appreciation of Mexican artists working outside European-style institutions. SAMA's folk-art pieces play off the Kahlo works and bring a physical representation of objects depicted in her paintings. For example, the Museum's *Jaguar Mask* complements Kahlo's *Girl with Death Mask*: a young girl, whose face is hidden behind a skeleton mask, stands on the grass next to a jaguar mask, symbolizing strength. The exhibition opens broader discussion about the influence of anonymous folk artists on famed modern painters. SAMA's *Jaguar Mask* and the rest of its folk-art collections will soon return in a reinstallation by Lucia Abramovich, the new Associate Curator of Latin American Art (see below).



Jaguar Mask
Mexico, Guerrero, late 19th century
Glass, painted wood, animal teeth, boar bristle
h. 13 in. (33 cm); w. 12 in. (30.5 cm); d. 7 1/2 in. (19.1cm)
The Nelson A. Rockefeller Mexican Folk Art Collection, 85.98.642

Lucia Abramovich Named Associate Curator of Latin American Art

After completing her PhD at Tulane University in New Orleans, Lucia Abromovich will join the Museum team this June. She gained experience at the New Orleans Museum of Art, the Smithsonian Institution's National Museum of the American Indian, and Harvard University's Dumbarton Oaks Research Library and Collection. One of her first projects at the Museum will be the reinstallation of the Latin American folk-art collection, which encompasses more than 12,000 objects. Commenting on her new role, Abramovich said: "Having grown up between Argentina and the United States in a Pan-American household, I developed a lifelong passion for Latin American art and culture. I am thrilled to begin working at the San Antonio Museum of Art, which itself brings together a range of cultures through art."



Magic of Clay and Fire Reignited

The Magic of Clay and Fire, a focus installation of contemporary Japanese ceramics in the Japanese galleries, now features sixteen new works that showcase unique shapes and glazes. They include many traditional forms, such as utensils for the Tea Ceremony—water jars, tea bowls, sake cups, and flower vases—as well as innovative clay sculptures. "Two pieces of undulating celadon 'ribbons' by Satoshi Kino and Satoko Fujikasa's organic plantlike flourishes of white porcelain clay are marvels to behold," said Emily Sano, PhD, Senior Advisor for Asian Art. Loans are from Allen Bennett, Susan and C.J. Peters, and Carole and Jeffery Horvitz.

Scene Change in American Galleries

The American collection is now refreshed and expanded into two galleries on the first floor of the East Tower. It features fifty-seven paintings and works of decorative arts, including old favorites by Albert Bierstadt, Martin Johnson Heade, William Merritt Chase, Asher B. Durand, George Inness, and Marsden Hartley. New to the galleries are six very special loans from the Thomas H. and Diane DeMell Jacobsen PhD Foundation and the Jacobsen Collection, including a seascape by Edward Moran, an abstract work by modernist Patrick Henry Bruce, and a John Singer Sargent portrait.

"These paintings enrich our story of American art," said William Keyse Rudolph, PhD, Chief Curator and the Marie and Hugh Halff Curator of American and European Art. "They offer new context for—and juxtapositions with—SAMA's collection. For instance, The Jacobsen Foundation's Singer Sargent portrait of *Elsie Wagg* now hangs beside the Museum's portrait of *Mrs. Elliott Fitch Shepard*." Both elegantly attired women gaze directly at the visitor. "Sargent's brushwork and genius in capturing detail and texture create a sense of movement in the canvas, inviting the viewer into both pictures," added Rudolph.



Rich Robes Refresh Chinese Gallery



Woman's Semiformal Robe
Qing dynasty, 19th century
Red silk satin embroidered with floss silk and gold wrapped thread, fur
l. 54 in. (137.2 cm); w. 59 1/2 in. (151.13 cm)
87.70.1

A new installation in the Chinese galleries presents a selection of beautiful robes and dress accessories made for Qing Dynasty ruling elites in the nineteenth and early twentieth centuries. Drawn from the Museum's permanent collection, the robes were made for various occasions and seasons and are lavishly embellished in gold and colored silk threads with dragons, stylized landscapes, birds, and flowers. Each item bears auspicious symbols that signal the wearer's moral authority to govern. Several of the robes are the product of imperial silk mills and embroidery workshops exclusive to the royal family in the Forbidden City. "These fine robes were produced before the wide use of machine looms and chemical dyes," said Shawn Yuan, Assistant Curator of Asian Art. "They demonstrate the last golden age of textile production in imperial China."



Above:
John Singer Sargent (1856–1925),
Elsie Wagg, ca. 1893,
Oil on canvas, 40 x 27 in.,
On loan from the Thomas H. and Diane DeMell Jacobsen PhD Foundation

Left:
John Singer Sargent, (American, 1856–1925),
Mrs. Elliott Fitch Shepard (Margaret Louisa Vanderbilt) 1888.
Oil on canvas, 84 1/2 in. (214.6cm); w. 48 1/2 in. (123.2 cm) x 27 in., 84.5,
Purchased with funds provided by the Lillie and Roy Cullen Endowment

Field Trip!

How Learning Happens at the Museum: 8 Kinds of Smart

IN THE 1980S, Howard Gardner, a professor of Cognition and Education at the Harvard Graduate School of Education, developed his theory of multiple intelligences. His premise, which has been widely adopted in schools, is that people learn in eight different ways. For anyone who has found that they remember things they have heard better than what they have read or seen, this makes immediate sense.

Our docents and educators use these eight ways of learning when giving tours to students in the Museum. “We strive to meet students where they are and give them memorable experiences,” said Bella Merriam, AT&T Director of Education. “Coming to SAMA gets the students away from classroom worksheets and textbooks—simply by being here they are exposed to and engaging with different ways of learning. They make a real connection with the Museum’s art.” By the end of the 2018–2019 school year, SAMA will have served over 18,000 students.



1 WORD SMART
Linguistic Intelligence

- Conversing
- Asking questions: What do you see?
- Verbal games
- Storytelling



2 SELF SMART
Intrapersonal Intelligence

- Relating the art to moods and feelings
- Providing time for internal decisions: Choose your favorite, imagine you could...
- Allowing a few moments of quiet reflection in the gallery

3 PICTURE SMART
Visual/Spatial Intelligence

- Observing and discussing objects
- Drawing
- Seeing objects from more than one side
- Comparing how objects relate to each other in a gallery
- Using directional words such as up, down, sideways



4 MUSIC SMART
Musical Intelligence

- Making verbal and visual rhymes
- Finding verbal and visual patterns
- Clapping, snapping, and other musical games
- Comparing lines and colors to musical sound

5 PEOPLE SMART
Interpersonal Intelligence

- Telling stories and jokes
- Engaging in group activities
- Being “elbow partners”—pairing and sharing



6 NUMBER/REASONING SMART
Logical/Mathematical Intelligence

- Playing counting games
- Solving a puzzle or riddle
- Talking about sets of objects or attributes
- Discussing patterns

7 BODY SMART
Bodily/Kinesthetic Intelligence

- Striking a pose
- Thumbs up, down, and sideways
- Walking like, standing like, arms like, hands like
- Taking a gallery walkabout
- Making art



8 NATURE SMART
Naturalist Intelligence

- Discussing the four elements—earth, air, water, and fire—in relation to art objects
- Emphasizing weather, the environment, and animals in art
- Integrating multisensory approaches such as scent and touch
- Letting students create categories of what they see



1. Director Katie Luber, collectors Ernest Pomerantz and Marie Brenner, and Curator Suzanne Weaver at the *Capturing the Moment* Member Opening Party.
2. Visitors engaging in conversation in the *Capturing the Moment* exhibition.
3. Unplugged at SAMA invited visitors to put away their phones and spend the day looking at art, participating in yoga and meditation, and learning about mindfulness.
4. Sid Waynick, Director Katie Luber, board member Peggy Mays, Diane Smith Waynick, lecturer Cynthia Young, Lowery Mays, lecturer Jaqueline Bates, Curator Suzanne Weaver, lecturer Nathalie Herschdorfer, and Assistant Curator Lana Meador at the 2019 Mays Symposium lunch.
5. Over 3,800 people attended our Spring Break Free Family Day.
6. Capturing a moment with one of our littlest visitors.

Keeping Up with Jones Avenue

FINDS AND CURIOSITIES IN WALKING OR BIKING DISTANCE OF THE MUSEUM



1. EASTSIDE KITCHENETTE — 1.7 miles
2119 N Interstate 35 | 210.507.2568
facebook.com/Eastside-Kitchenette-145811282751793/

Chef Jeff White (formerly of Boiler House and Tucker's Kozy Korner) joined forces with his wife Jenn White (Brindles Awesome Ice Creams) to open a Government Hill restaurant all their own. Using reclaimed wood and vintage pieces, they converted an old house into a space that's airy and welcoming—neither fussy nor "country cute." White's updates of southern comfort-food classics introduce new ingredients without forgoing the comfort. You'll find weekday Blue Plate lunch specials, along with enormous juicy hamburgers, chicken and dumplings, pimento and bacon hushpuppies, and fried oysters. For dinner, think Kobe chicken-fried steak, blue-crab stuffed catfish with fried green tomatoes, or buttermilk country-fried duck with collards. Sunday brunch involves fried chicken on a pumpkin waffle or shrimp and grits topped with a poached egg and spicy hollandaise. Arrive hungry and plan for a nap afterwards.



2. LITTLE DEATH — 0.9 miles
2327 N Saint Marys St | 210.978.8140
Instagram @littledethwine

The French euphemism behind this wine bar's name hints that their offerings promise transcendent pleasure. But the Empty Stomach Group (Barbaro, Hot Joy, Chisme!, and Paper Tiger) has never lacked wit or daring. Owner Chad Carey has converted a long-disused former gas station—colorfully muralled on its adobe exterior and clean and spare within—into a low-key wine bar that serves more than 250 wines by the bottle and about ten by the glass. Feeling French? Enjoy your wine with an appetizer—lemon-marinated white beans, olives in oil, radishes and butter, a cheese selection, *pâté en croûte*, duck egg, or *fois gras torchon*—at one of two communal tables. If you're on the go, ask the staff to recommend a bottle, buy it retail at a \$10 discount, and enjoy it at home.

3. ROADMAP BREWING CO. — 0.5 miles
723 N Austin St | 210.254.9962
roadmapbrewing.com/

"All roads lead to beer," is this new independent brewery's motto. Head brewer Dustin Baker was a middle school teacher in Pittsburgh and San Antonio, but when he and Hannah Baker were given a home brewing kit as a wedding gift, what started as a hobby shared with family and friends became a passion and a career change. Last September Dustin and his father Scott cofounded Roadmap, a brewery/taproom just a short walk from the Museum. Roadmap offers about ten seasonal brews on tap—currently IPAs, milk stouts, Mexican lager, English pub ale, amber ale, kettle sour, and hefeweizen—in a kid- and dog-friendly warehouse space. Hannah holds up the business and marketing end and pulls drafts along with Dustin (when he's not concocting a new brew). Bring your own food or choose from a rotation of food trucks.



4. SAVOR — 0.1 miles
200 E Grayson St, #117 | 210.554.6484
ciarestaurantgroup.com/savor-restaurant/

Help the CIA (not that one) teach, and educate your palate at the same time. Savor, the updated teaching restaurant of the Culinary Institute of America at the Pearl, is staffed by ranks of advanced student chefs, servers, hosts—all the kitchen and floor battery that orchestrates a fine dining experience. In the redesigned space that formerly housed Sandbar, Savor serves three- or four-course meals that diners compose from a list of tempting options (choosing is the hardest part). The cuisine mixes the traditional and the adventurous, giving students experience with a wide range of ingredients and techniques, and the flavors, presentation, and service get high marks. And diners do give grades: at meal's close, you're invited to rate your experience and note comments on a card, offering valuable feedback to talented young professionals. Reservations required.

5. THE SHOP AT THE SAN ANTONIO MUSEUM OF ART — 0 miles
200 W. Jones Ave. | 210.978.8184
samuseum.org/shop

What a drip! Many pieces in Philadelphia artist Brian Giniewski's range of colorful ceramics make perfect summer vessels for cut flowers and potted plants. Others positively scream for ice cream. Giniewski hand-throws them on a potter's wheel, fires them, and drips them in dreamy pastel glazes with names like bubblegum, creamsicle, and pop rocks. "As I was scrolling Instagram late one night, these ceramics stopped me in my tracks," said Caitlin Brown-Clancy, Manager of Retail Operations. "'We HAVE to have these!' I thought. I love the shapes, but it's the candied, drippy glaze that makes them so charming."

CIRCLE MEMBERS

October 1, 2018 to January 31, 2019

CHAIRMAN'S CIRCLE (\$100,000)

Mrs. Karen Hixon

DIRECTORS CIRCLE (\$25,000)

Mrs. Marie Halff
Mr. and Mrs. Frederic Hamilton
Ms. Claudia Huntington and Mr. Marshall Miller Jr.
Mrs. Ruth Eilene Sullivan

LEADER'S CIRCLE (\$10,000)

Mrs. Walter F. Brown
Mr. Charles Butt

BENEFACTOR'S CIRCLE (\$5,000)

Mr. and Mrs. Lee M. Bass
Mr. and Mrs. Charles Bowden
Mr. and Mrs. James F. Dicke II
Mr. and Mrs. Dale F. Dorn
Mr. Thomas H. Edson
Mr. and Mrs. Ronald J. Herrmann
Mr. and Mrs. Michael Humphreys
Mr. and Mrs. Red McCombs
Ms. Dorothea C. Oppenheimer
Corinna and J.B. Richter
Mr. and Mrs. William A. Scanlan Jr.

PHILANTHROPIST'S CIRCLE (\$2,500)

Dr. and Mrs. Wilbur S. Avant Jr.
Mr. and Mrs. William D. Balthrope
Ms. Margery L. Block
Mr. and Mrs. Jorge del Alamo
Mr. and Mrs. John D. Eadie
Mr. and Mrs. C. Michael Gentry
Mrs. Claire Golden
Dr. and Mrs. William Gonzaba
Mr. and Mrs. James W. Gorman Jr.
Ms. Helen K. Groves
Mr. and Mrs. Christian Herff
Mr. and Mrs. Frank Herrera
Mr. Lamont A. Jefferson
Mr. and Mrs. Darrell Kirksey
Mrs. Rosario Laird
Ms. Mary S. Marmion
Mr. and Mrs. Bruce Mitchell
Mr. and Mrs. Gregg Muenster
Col. and Mrs. William Dean Rasco
Mr. and Mrs. Barry C. Roberts
Mr. Nelson A. Rockefeller Jr.
Mr. and Mrs. Rick Schimpff
Ms. A. Kate Sheerin
Mr. and Mrs. Banks M. Smith
Mr. and Mrs. Forrester M. Smith
The Steves Foundation
Dr. Tyson E. Becker and Mrs. Katie M. Sutcliffe Becker
Ms. Sidney Swearingen and Dr. Stephen F. Wood
Mr. and Mrs. Rich Walsh
Mr. and Mrs. Mark E. Watson III
Mr. and Mrs. Robert S. Wempe
Mr. and Mrs. George M. Williams Jr.
Mr. and Mrs. W. Richey Wyatt
Mr. and Mrs. David Zachry

CIRCLE (\$1,000)

Mr. and Mrs. Carlos Alvarez
Mr. and Mrs. Robert A. Anderson
Drs. Maryan and Otis Baskin
Ms. Jackie Beretta and Mr. Benjamin Rodriguez
Ms. Margaret Corning Boldrick
Mr. and Mrs. Michael J. Bolner
Dr. Lois L. Bready and Dr. Joseph R. Holahan
Kimberly and Gary Britton
Mary and Brian Burch
Mr. and Mrs. Robert B. Cadwallader
Dr. and Mrs. Ronald K. Calgaard
Mr. and Mrs. Richard Calvert
Brig. Gen. (Ret.) David M. Cannan
Mr. Chris Carson
Mr. and Mrs. Charles E. Cheever Jr.
Mrs. Emilie K. Chenault
Ms. Barbara Christian Chumney
Mr. Edward E. Collins III
Mr. William R. Crow, Jr.
Mr. and Mrs. William E. Dreyer
Mrs. Jane Drought
Dr. and Mrs. Charles H. Du Val
Mr. and Mrs. Brooke F. Dudley
Mr. Frank Fichtel and Dr. Lisa Fichtel
Ms. Caroline Forgason
Ms. Jeannie M. Frazier
Mr. and Mrs. Mark Gale
Mrs. Bonny Gillis
Mr. and Mrs. Frederick C. Groos Jr.
Mr. and Mrs. Harry A. Halff
Mrs. Friedrich Hanau-Schaumburg
Ms. Anne R. Hardinge
Mr. and Mrs. Houston H. Harte
Ms. Linda K. Haseloff
Mr. and Mrs. James L. Hayne
Mr. Max Hensley and Ms. Billinda Wilkinson
Dr. and Mrs. Bruce G. Hopkins
Mrs. Erika J. Ivanyi
Miki and Sebastian Izzard
Mr. and Mrs. Timothy T. Jenison
Dr. and Mrs. Robert L. Jones
Rev. and Mrs. Raymond E. Judd Jr.
Ms. Dianne Kamolsri
Mr. Chris Karcher and Ms. Karen Keach
Mr. and Mrs. Patrick J. Kennedy Sr.
Mr. and Mrs. Patrick J. Kennedy Jr.
Mr. and Mrs. Greg King
Mr. and Mrs. John Korbell Sr.
Ms. Barbara C. Kyse
Mr. Louis J. Lamm Jr.

Mr. and Mrs. Richard A. Lange
Mr. and Mrs. Robert R. Lende
Mr. James R. Letchworth and Mr. Kirk C. Swanson
Dr. and Mrs. M. Philip Luber
Mrs. Alice Lynch and Mr. Sam Norwood
Dr. and Mrs. Roger Lyons
Mr. William Maney and Mr. Michael Weil
Mr. Paul Martin
Mr. and Mrs. Raymond McClellan
Mr. and Mrs. Brian Meuth
Mrs. Judith N. Morton
Ms. Linda Nairn
Mr. John E. Newman Jr.
Mr. and Mrs. Allan G. Paterson Jr.
Drs. Robert and Diane Persellin
Mr. Ernest Pomerantz and Ms. Marie Brenner
Mr. and Mrs. Larry M. Pouttu
Mr. Epitacio R. Reséndez V and Hunter Henke
Ms. Amy Rhodes
Ms. Laura M. Richards
Mr. and Mrs. Jeffrey D. Ryan
Emily Sano and Gilson Riecken
Mr. and Mrs. Peter C. Selig
Mr. and Mrs. Robert A. Shivers
Mr. Patrick H. Swearingen Jr.
Ms. Melissa Varner
Ms. Courtney Walker
Mr. and Mrs. Mark E. Watson Jr.
Ms. Maria Winsborough
Dr. Patricia Winter-Valdez and Dr. Daniel C. Valdez
Mr. and Mrs. Thomas A. Wirth
Mr. and Mrs. Carl E. Wulfe
Dr. and Mrs. Douglas L. Young
Mr. and Mrs. Bartell Zachry

CORPORATE MEMBERS

as of January 31, 2019

CORPORATE DIRECTOR'S CIRCLE (\$25,000)

H-E-B
Valero Energy Foundation

CORPORATE BENEFACTOR'S CIRCLE (\$5,000)

Hixon Properties Incorporated
Jefferson Bank
Lucifer Lighting Company

CORPORATE ART SOCIETY CIRCLE (\$1,000-\$2,500)

Anne Zanikos Art Conservation
Bolner's Fiesta Products, Inc.
ENTRUST Technology Consulting Services
Frost
Luther King Capital Management
Sendero Wealth Management
The Trust Company

SMALL BUSINESS (\$500)

Paloma Blanca Mexican Cuisine
Vogt Auction Galleries

UNIVERSITY PARTNERS

Alamo Colleges
Texas A&M University-San Antonio
Trinity University
University of the Incarnate Word
UT Health San Antonio

NEW & RETURNING MEMBERS

as of January 31, 2019

PATRON (\$550)

Dr. and Mrs. Sabas F. Abuabara
Dr. Clifford N. Alprin and Dr. Lindsey M. Hawkins-Alprin
Mr. Kevin W. Baker
Dr. Phillip B. Balleza
Dr. George Beddingfield
Mr. and Mrs. Bradford R. Breuer
Mr. and Mrs. Thomas Bronder
Mr. and Mrs. Stewart Bryant
Dr. Cheri Carter-Rubenstein
Ms. Tsuichun R. Chang
Mrs. Lila Cockrell
Mr. and Mrs. Carlos Contreras
Mr. and Mrs. John Cornell
Mrs. Flora Crichton
Mr. and Mrs. Robert R. Dale
Mr. Thomas L. Dashiell
Mr. and Mrs. Randall Espinoza
Mr. and Mrs. Edward Faleski
Mr. Paul Fitzpatrick and Ms. S. Colette Daubner
Ms. Bonnie L. Flake and Dr. Francisco García-Treto
Dr. Mike Flores
Judi Free and Paul Hamborg
Mr. and Mrs. Steven Fry
Ms. Laura R. Gates
Ms. Laura I. Gates
Mr. Thomas Getzen and Mr. Vincent Rodrigues
Mr. Michael S. Guarino
Mr. and Mrs. John Hayes
Dr. and Mrs. William L. Henrich
Mr. David Brian Holland
Dr. Edward E. Horvath and Dr. Lynn L. Horvath
Dr. Obinna G. Isiguzo
Dr. and Mrs. Victor Lam
Mr. and Mrs. James Lawson
Mrs. Ingrid Lee
Mr. and Mrs. Lance Lubel
Ms. Audrey Mangold
Cary Marriott and Jim Taylor
Ms. Debbie Martinez
Mr. and Mrs. Gilbert Mathews
Mrs. Louella McCamish
Mr. Dana F. McGinnis
Mr. and Mrs. Tom Mengler
Drs. Blanca and Rodolfo Molina
Ms. Susan L. Mooberry and Mr. Gregory M. Patterson
Mr. and Mrs. Floyd R. Nation

Mr. and Mrs. John M. Oppenheimer
Dr. Laura Parr and Mr. Atlee Parr
Mr. and Mrs. Jon M. Purdy
Mrs. Victoria A. Reed
Mrs. Iris Rubin
Scott Sanders and Isabel Garcia
Ms. Linda N. Seeligson
Dr. Alberto C. Serrano and Dr. Reina Serrano
Drs. Harry and Molly Shafer
Ms. Rebecca Simmons
Mr. and Mrs. Jack J. Spector
Mrs. Elsie G. Steg
Mr. and Mrs. Robert E. Stevens
Teri and George Stieren
Dr. and Mrs. Karl W. Swann
Dr. Cynthia Teniente-Matson
Mr. and Mrs. Gary R. Walter
Mrs. Mimi B. Weber
Dr. and Mrs. Mark B. Weinstein
Dr. and Mrs. Bruce A. Wood

DONATIONS

October 1, 2018 to January 31, 2019

\$100,000 and Above

The Brown Foundation, Inc.
Betty Stieren Kelso Foundation
City of San Antonio
Estate of Gilbert M. Denman

\$25,000 to \$99,999

The Capital Group Companies Charitable Foundation
Mrs. Marie Halff
H-E-B
Herrmann-Zeller Foundation
Ms. Claudia Huntington and Mr. Marshall Miller Jr.
Mr. and Mrs. Edward E. Whitacre Jr.

\$10,000 to \$24,999

Mrs. Lucille M. Duff
Faye L. and William L. Cowden Charitable Foundation
Mr. and Mrs. Frederic Hamilton
Dr. and Mrs. William Gonzaba
The Hart-Sheehy Fund
Ms. Susan C. Lewis
Mays Family Foundation
Thomas Gilcrease Foundation
Valero Energy Foundation

\$5,000 to \$9,999

Institute of Museum and Library Services
Mr. and Mrs. Lanham Napier
Mr. and Mrs. Rick Schimpff
Texas Commission on the Arts
The Parker Foundation, Inc.

\$1,000 to \$4,999

Anonymous
Creighton Charitable Trust
Ms. Judith Ely
Mr. John Garber
Ms. Helen K. Groves
Mr. and Mrs. Stuart C. Hendry
Dr. Diane D. Jacobsen
Lt. Col. Robert E. Kelso
Mr. and Mrs. Patrick J. Kennedy
Mr. and Mrs. Toby O'Connor
Ruth and Edward Austin Foundation
Drs. Harry and Molly Shafer
Mr. Michael Shallo

\$500 to \$999

Mr. William J. Baine
Mr. Edward E. Collins III
Mr. and Mrs. Clint Fielden
Dr. and Mrs. Edmundo O. Garcia
Mr. and Mrs. John L. Hendry III
Ms. Xonia Kargl
Mr. and Mrs. Edward Kelley
Mrs. Rosario Laird
Mr. Louis J. Lamm Jr.
Mr. Andrew J. Lewis IV
Mr. Rick Liberto
Mr. Maurice Sellers
Mr. and Mrs. David Zachry

THE ROBERT ESPARZA CULTURAL OUTREACH PROGRAM

October 1, 2018 to January 31, 2019

Mr. and Mrs. Toby O'Connor
Mr. Thomas H. Edson
Mrs. Rosario Laird
Ms. Claudia Huntington and Mr. Marshall Miller Jr.

DESTINATION MAINE

October 1, 2018 to January 31, 2019

Camden Hills - \$10,000

Valero Energy Foundation

Bar Harbor - \$5,000

Argo Group US
Mrs. Hannah H. Beard
Mr. and Mrs. Philip Hudson
Dr. and Mrs. Fernando Lopez
Mark Muecke Capital Management, LLC

Underwriters

Dr. and Mrs. Wilbur S. Avant Jr.
Mr. and Mrs. Edward Hart
Mrs. Claire Golden
Mr. Christopher Grossman
Mr. and Mrs. Banks M. Smith
Sunline
Mr. and Mrs. Raymond J. Welder III

In Kind Gifts

Azar Distilling, LLC
Hargrove's
Lily's Cookies
Seazar's Fine Wine and Spirits
Shetler Wade Jewelers
Silver Eagle Distributors

2018 ANNUAL FUND SUPPORTERS

October 1, 2018 to January 31, 2019

Mr. Richard C. Arredondo
Dr. George Beddingfield
Ms. Dianne Beyer
Ms. Ellen H. Brennan
Ms. Margaret Corning Boldrick
Mr. and Mrs. Robert B. Cadwallader
Mr. and Mrs. Richard Calvert
Mr. and Mrs. Stuart Cameron
Mr. Demetrius Christian
Mrs. Eva Elisa Cruz Russek
Mr. and Mrs. Roberto A. Duran
Dr. Richard S. Finlayson
Mrs. Mary W. Fleet
Flohr Family Foundation
Garner Family Fund
Ms. Carol Hans
Mr. Charles G. Hooks IV
Mr. Ralph M. Jentsch
Kamo Energy, Inc.
Mr. and Mrs. Herbert D. Kelleher
Mr. Ronald C. Keller

Mr. and Mrs. John C. Kerr
Luther King Capital Management
Mr. and Mrs. Robert King
Mrs. Rosario Laird
Mr. and Mrs. Mark Langford
Mrs. Elena J. Manzano-Lusk
Mrs. Frances V. Metcalf
Mr. and Mrs. Richard Miles
Mr. Douglas W. Miller
Mrs. Martha B. Mills
Mr. Robert G. Morrell
Mr. Frederic W. Morton Jr.
Ms. Marilou Moursund
Ms. Vicki Neeb
Ms. Luisa I. Newton
The Nordan Trust
Mr. Charles Ondrej
The Harris K. and Lois G. Oppenheimer Foundation
Dr. Richard S. Pressman and Ms. Judine A. Taylor
Mrs. Mary S. Rodriguez
Ms. Cessie K. Sanchez
Lt. Col. Diego Sanchez Jr.
Mr. and Mrs. Clement W. Shore
Mr. and Mrs. Banks M. Smith
Mr. and Mrs. Bob Sohn
Mr. and Mrs. Stanley Spigel
Mr. and Mrs. Kenneth G. Torrington
Ms. Patricia A. Trenton
Mrs. Ann C. Vineyard
Mrs. Rita Binkley Worthy

TRIBUTES

October 1, 2018 to January 31, 2019

In Memory of Martha C. Bock

Mr. and Mrs. Doug Field

In Memory of Janey B. Marmion

Ms. Mary S. Marmion

In Memory of Diana Maria Navarro

Mr. Michael Shallo

In Honor of Karen Hixon

Mr. and Mrs. C. Michael Gentry

In Honor of Katie Luber

Mr. Brad Parman and Mr. Tim Seeliger

In Honor of Bruce Mitchell

Mr. Thomas H. Edson

In Honor of Mary Moorman

Mr. and Mrs. Matthew Cross

In Memoriam: A. Baker Duncan



Sally and Baker Duncan in the Great Hall at the Museum's premier on February 27, 1981.

The Museum mourns the passing of Addison Baker Duncan on January 16, 2019. Baker served as chairman of the San Antonio Museum Association from 1975 to 1981 and was instrumental in converting the former Lone Star Brewery into the thriving museum of art we enjoy today. Longtime friend Patrick H. Swearingen Jr. said, "In addition to playing an important role in our city and in the history of the San Antonio Museum of Art, Baker Duncan was a wonderful friend and an outstanding fundraiser for worthy causes." Former Trustee Bobby Cadwallader described him simply as, "GIFTED!" The San Antonio Museum of Art is grateful for Baker's vision, talent, and generosity, and for the great foundation he gave us to become a premier cultural destination.

**Ready, Set, Mark
Your Calendar**



INTERNATIONAL MUSEUM DAY = BOGO ADMISSION

BOGO Admission + 10% off at the
Shop and Tre Trattoria (exclusions apply)
Saturday, May 18



HAPPY 10TH BIRTHDAY, MUSEUM REACH!

Celebrate Friday, May 24–Sunday May 26



FAMILY FLICKS: BLACK PANTHER

Friday June 28



**San Antonio
Museum
of Art**

200 West Jones Avenue | San Antonio, TX 78215

NONPROFIT ORG
U.S. POSTAGE
PAID
SAN ANTONIO, TX
PERMIT NO. 2716

STAY IN TOUCH

Follow us on Facebook, Twitter,
Instagram & YouTube



SAMUSEUM.ORG

**BE A
SUPERHERO!**

SUPER ART

MUSEUM BALL

**Celebrating the special exhibition
*Men of Steel, Women of Wonder***

Friday, June 7, 2019 at the St. Anthony Hotel
Cocktails, Dinner, and Dancing

Tickets and Sponsorship Information: samuseum.org/ball

Funds raised from this super evening support the San Antonio Museum of Art's commitment to world-class exhibitions, innovative educational programs for over 18,000 students each year, and care for a collection of 30,000 works of art.

MAY | JUNE 2019



CALENDAR



San Antonio
Museum
of Art

MAY 2019

Visit samuseum.org for calendar updates.



EVERY WEEK

Gallery Talk: Museum Highlights

Tuesdays | 4:30–5:30 p.m.
Sundays | 11:00 a.m.–12:00 p.m.
Free

Gallery Talk: Special Exhibitions

Tuesdays | 5:30–6:30 p.m.
Sundays | 12:00–1:00 p.m.
Free for members or with
Special Exhibition surcharge

Meditation in the Japanese Gallery

Saturdays | 10:15–11:00 a.m.
Free with Museum admission
Cushions and stools are provided.

Sketch Any Day. Any Time.

Connect with our collections through the tradition of gallery sketching. Bring a sketchbook or check out a sketch pad, pencils, and sketching guide from the Museum Shop. No charge.

1 | Wednesday

Playdates: Delightful Dragons

First and Third Wednesdays | 10:00–10:45 a.m.
Free with Museum admission | Space is limited.

Ages 2–4: Cultivate, nurture, and inspire creativity through stories, gallery activities, hands-on art, movement, and music.

2 | Thursday

Art to Lunch: Hawaii

First and Third Thursdays | 12:30–1:00 p.m.
Free for members | \$10 non-members

Take a bite out of your lunch hour with a two-object tour. Bring your own lunch to enjoy in our courtyard or buy it here at Tre Trattoria.

4 | Saturday

Member Brunch: Capturing the Moment

10:00 a.m.–12:00 p.m. | \$25 members
Register at samuseum.org/calendar

Enjoy a docent-led tour of *Capturing the Moment* and brunch at Tre Trattoria.

Multisensory Tours for the Visually Impaired

First Saturdays | 10:00–11:30 a.m.
Free

Registration required: samuseum.org/calendar

Includes descriptive language, touch, sound, and smell. Guide dogs, sighted companions, and all visitors welcome.

5 | Sunday

Family Day: See + Do: Greece and Rome

12:00–3:00 p.m. | Free with Museum admission

Go Greek with art-making inspired by ancient Greece and Rome. Craft masks for comedy and tragedy, design a Roman shield, and build your own mini-temple.

9 | Thursday

Art Crawl: The Wonder of Nature

Second Thursdays | 10:00–10:45 a.m.
Free with Museum admission

Gallery Tours for 0–18 months and caregivers:
Art selections enhance parent child interactions.
Includes group play and social time.

10 | Friday

Lecture: Making Color Acceptable

6:30–7:30 p.m. | Free with Museum admission
Seating is limited. | Doors open at 6:00 p.m.

After years of rejection, suddenly in 1976 color photography became acceptable as an art form. John Rohrbach, PhD, Senior Curator of Photographs at the Amon Carter Museum of American Art, will discuss this transformation.

Left:

Aphrodite Désirée Navab
Landing from Super East/West Woman, 2002–2008
Archival C Print
22 x 17 in.
Courtesy of the artist

Cover:

Fahamu Pecou
Nunna My Heros: After Barkley Hendricks' 'Icon for My Man Superman,'
1969 (detail), 2011
Acrylic, gold leaf, and oil stick on canvas
63 x 49 1/2 in. (160 x 125.7 cm)
Collection of the Nasher Museum of Art at Duke University.
Gift of Marjorie and Michael Levine, 2012.8.1. © Fahamu Pecou.
Photo by Peter Paul Geoffrion.

11 | Saturday

San Antonio Potters Guild Clay & Arts Festival

10:00 a.m.–5:00 p.m. | Free

Come out and shop the handmade creations of local clay, glass, fiber, and print artists. Over 30 vendors will showcase their creations.

12 | Sunday

Last Chance!

Closing Day: Capturing the Moment

15 | Wednesday

Playdates: Elmer the Elephant

First and Third Wednesdays | 10:00–10:45 a.m.

Free with Museum admission | Space is limited.

Ages 2-4: Cultivate, nurture, and inspire creativity through stories, gallery activities, hands-on art, movement, and music.

16 | Thursday

Art to Lunch: Mothers

First and Third Thursdays | 12:30–1:00 p.m.

Free for members | \$10 non-members

Take a bite out of your lunch hour with a two-object tour. Bring a lunch to enjoy in our courtyard or buy it here at Tre Trattoria.

18 | Saturday

International Museum Day

10:00 a.m.–5:00 p.m.

BOGO admission, 10% off at the Shop (exclusions apply), and 10% off at Tre Trattoria (excluding alcohol).

Welcome Tour: It's Art in Any Language

Third Saturdays | 11:00 a.m.–12:00 p.m.

Free | Translators welcome

The Museum welcomes newcomers to the city and the US. Take an art tour then learn about the Museum's programs.

23 | Thursday

Up Close with the Curators:

William Keyse Rudolph, PhD

6:00–7:30 p.m. | Free

For Curators Society members (\$250 Level and above) | RSVP: samuseum.org/calendar

Curator-led gallery talk on the reinstallation of the European Gallery.

May 24–26

Museum Reach 10th-Anniversary Celebration

The River Walk's Museum Reach turns 10! Celebrate with us and check out the San Antonio River Authority's website for more events: www.sara-tx.org.

24 | Friday

Family Flicks: Night at the Museum

(2006), 98 min, PG

Sundown | Free

Bring lawn chairs, blankets, and picnics. Food trucks on site.

Top Ten Art Tours

6:30 and 7:30 p.m.

Free with Museum admission



25 | Saturday

Meditation by the River

10:15–11:00 a.m.

Free with Museum admission

Top Ten Art Tours

12:00 and 1:00 p.m.

Free with Museum admission

26 | Sunday

River Flow

10:00–11:00 a.m. | Free

Practice vinyasa yoga flow in the Sculpture Garden.

Museum Family Fun

11:30 a.m.–2:00 p.m. | Free

Participate in a river blessing at the Museum's River Landing at 11:30 a.m., then from 12:00–2:00 p.m. dance and spin beats with the AM Project and make *en plein air* watercolors and art inspired by Donald Lipski's *F.I.S.H.* to celebrate 10 years of the Museum Reach.

Top Ten Art Tours

11:00 a.m. and 12:00 p.m.

Free

MAY

S	M	T	W	T	F	S
			1	2	3	4
5	6	7	8	9	10	11
12	13	14	15	16	17	18
19	20	21	22	23	24	25
26	27	28	29	30	31	

EXHIBITION OPENINGS & CLOSINGS

Members see it first, see it free.
Not a member? Join today!
samuseum.org/membership

Capturing the Moment
Through May 12, 2019

Harry Bertoia
Through June 2019

Men of Steel, Women of Wonder
June 21–September 1, 2019

Victorian Radicals
October 11, 2019–January 5, 2020

LOVE ART? ENJOY PEOPLE? BECOME A DOCENT!

Learn about the collections and how to engage visitors of all ages in conversations about art. Seeking both English and bilingual Spanish speakers. No previous experience necessary.



Visit samuseum.org/about/volunteer for more information and to apply.
Questions? Email Tripp.Cardiff@samuseum.org

1 | Saturday

Multisensory Tours for the Visually Impaired

First Saturdays | 10:00–11:30 a.m.

Free

Registration required: samuseum.org/calendar

Includes descriptive language, touch, sound, and smell. Guide dogs, sighted companions, and all visitors welcome.

5 | Wednesday

Playdates: Things That Go!

First and Third Wednesdays | 10:00–10:45 a.m.

Free with Museum admission | Space is limited.

Ages 2–4: Cultivate, nurture, and inspire creativity through stories, gallery activities, hands-on art, movement, and music.

6 | Thursday

Art to Lunch: Beer & the Brewery

First and Third Thursdays | 12:30–1:00 p.m.

Free for members | \$10 non-members

Take a bite out of your lunch hour with a two-object tour. Bring a lunch to enjoy in our courtyard or buy it here at Tre Trattoria.

7 | Friday

Super Art Museum Ball

7:00–11:30 p.m.

Tickets and Sponsorships: samuseum.org/ball

13 | Thursday

Art Crawl: Exploring the 5 Senses

Second Thursdays | 10:00–10:45 a.m.

Free with Museum admission

Gallery tours for 0-18 months and caregivers: Art selections enhance parent-child interactions. Includes group play and social time.

14 | Friday

Art Party: Art on Tap

6:00–8:00 p.m.

Gallery Talks | 5:30, 6:30, and 7:30 p.m.

Free with Museum admission | Cash bar

Enjoy music by Elijah Zane, take a docent-led tour, and create your own SAMA-inspired beer label.

Art Party is a collaboration of the Museum and KRTU Jazz 91.7.

15 | Saturday

Welcome Tours: It's Art in Any Language

Third Saturdays | 11:00 a.m.–12:00 p.m.

Free | Translators welcome

The Museum welcomes newcomers to the city and the US. Take an art tour then learn about the Museum's programs.

19 | Wednesday

Playdates: Egyptian Adventure

First and Third Wednesdays | 10:00–10:45 a.m.

Free with Museum admission | Space is limited.

Ages 2–4: Cultivate, nurture, and inspire creativity through stories, gallery activities, hands-on art, movement, and music.

20 | Thursday

Art to Lunch: Summer Vacation

First and Third Thursdays | 12:30–1:00 p.m.

Free for members | \$10 non-members

Take a bite out of your lunch hour with a two-object tour. Bring a lunch to enjoy in our courtyard or buy it here at Tre Trattoria.

★ Circle Member Tour: Men of Steel, Women of Wonder

★ 5:30–6:30 p.m. | Free | Circle members only

Join Lana Meador, Assistant Curator, for a tour of the exhibition.

★ Member Preview Party: Men of Steel, Women of Wonder

★ 6:30–8:00 p.m. | Free for Circle members
★ \$25 members | Register: samuseum.org/calendar

Members see it first! An exclusive preview with music, drinks, and hors d'oeuvres.

★ 21 | Friday

★ Exhibition Opening:

★ Men of Steel, Women of Wonder

★ Opening Weekend

★ Men of Steel, Women of Wonder Tours

★ 12:00 and 1:00 p.m.

★ Free with Museum admission

★ 22 | Saturday

★ Opening Weekend

★ Men of Steel, Women of Wonder Tours

★ 12:00 and 1:00 p.m.

★ Free with Museum admission

★ **25–28 | Tuesday–Friday**
 ★ **For Educators: Summer Teacher Institute: What Makes a Hero**

★ 10:00 a.m.–3:00 p.m.
 \$80 members | \$100 non-members
 Bring a sack lunch | 20 CPE/GT

Examine America's relationship to superheroes in SAMA's permanent collection and in *Men of Steel*, *Women of Wonder*. Hands-on lessons include making graphic novels, screen prints, and sculptures.

★ **25 | Tuesday**
 ★ **TPR Live @ the Museum**

★ 6:00–8:00 p.m. | Free | Cash bar

Tuesday night live with local music curated by Texas Public Radio, tours of *Men of Steel*, *Women of Wonder*, cash bar, and a comic book-inspired photo booth.

★ **28 | Friday**
 ★ **Escape the Museum: Save Lois Lane!**

★ 6:30–8:00 p.m.
 ★ \$25 members | \$35 non-members
 \$10 children 8 to 12
 Tickets: samuseum.org/calendar

Lois Lane is trapped in the Museum's sky bridge! And Lex Luthor has planted krypton-art in the galleries to weaken Superman's power. Solve riddles to help Superman save Lois and overcome Luthor's diabolical plan. Recommended for ages 8 and up.

★ **IT'S MOVIE NIGHT!**
 ★ **Family Flicks: Black Panther**

★ (2018), 134 min., PG-13
 ★ Sundown | Free

Bring lawn chairs, blankets, and picnics. Food trucks on site.



SPONSOR SUPPORT

Family Programs have been generously underwritten by a grant from the Faye L. and William L. Cowden Charitable Foundation.

Lectures are made possible by generous support from the Louis A. and Frances B. Wagner lecture fund.

Multisensory Tours for the Visually Impaired have been generously underwritten by Dr. and Mrs. Walt W. Magnus.

JUNE

S	M	T	W	T	F	S
						1
2	3	4	5	6	7	8
9	10	11	12	13	14	15
16	17	18	19	20	21	22
23	24	25	26	27	28	29
30						



Museum Reach Celebrates Tenth Anniversary

In 2009, the Museum Reach extension of the River Walk from Josephine to Lexington Streets was completed after a \$70-million investment and the efforts of the City of San Antonio, Bexar County, San Antonio River Authority, San Antonio River Foundation, and the US Army Corps of Engineers. Named the “Museum Reach” in recognition of SAMA’s pioneering position in the neighborhood, what once looked like a drainage ditch became a lush ecosystem. Ten years on, it has seen explosive growth as a place to work, live, and play—home to the Pearl, apartments, hotels, restaurants, and a worthy art stroll.

The Museum Reach has eleven public art installations—among them *F.I.S.H.* by Donald Lipski and *The Grotto* by Carlos Cortes. Just across from the Museum’s Gloria Galt River Landing are nine decorative metal tiles that were once part of the HemisFair '68 Taiwanese Pavilion, donated by former board member May Lam. Historical details and descriptions of the art installations are available on the San Antonio River Foundation website, sariverfoundation.org.

A weekend of events is planned for the anniversary celebration over Memorial Day weekend. See inside and visit the San Antonio River Authority website, sara-tx.org.



San Antonio
Museum
of Art

200 West Jones Avenue | 210.978.8100 | samuseum.org