

LEGAL DESCRIPTION

LOT 17, BLOCK D, LA-HACIENDA, ACCORDING TO THE PLAT THEREOF
RECORDED IN PLAT BOOK 15, PAGE 6 OF THE PUBLIC RECORDS OF PALM
BEACH COUNTY, FLORIDA.

BUILDING SETBACKS

	Required	Provided
Front Setback (East)	25'-0"	26'-0"
Rear Setback (West)	10'-0"	21'-6 1/2"
Side Street Setback (North)	15'-0"	16'-0 1/2"
Side Setback (South)	7'-6"	7'-6"

BUILDING AREA CALCULATIONS

GROUND FLOOR A/C	1,422 SQ.FT.
SECOND FLOOR A/C	1,775 SQ.FT.
TOTAL A/C	3,197 SQ.FT.

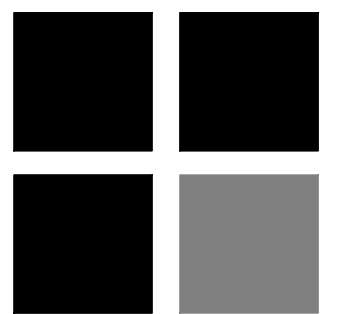
GARAGE	431 SQ.FT.
LOGGIA	246 SQ.FT.
ENTRY	96 SQ.FT.
COVERED BALCONIES	372 SQ.FT.
OPEN BALCONY	56 SQ.FT.

TOTAL SQ.FT. 4,398 SQ.FT.

SITE DATA CHART

	PROVIDED	REQUIRED
Bldg Footprint =	2,195 SQ.FT.	
Impervious Area =	3,834 SQ.FT.	
Pervious Area =	3,380 SQ.FT.	
Total Site Area =	7,214 SQ.FT.	
Lot Coverage =	30.04%	
% Impervious =	53.2%	
% Pervious =	46.8%	
% Open Space =	46.8%	25% Non-Vehicular
Lot Width =	58'-0 1/2"	
Lot Depth =	±125'-9"	
Lot Frontage =	58'-0 1/2"	
Building Height =	26'-4"	35'-0"
Total Building Floor Area =	4,398 SQ.FT.	

RICHARD JONES



ARCHITECTURE

10 S.E. FIRST AVENUE | SUITE 102
DELRAY BEACH, FLORIDA 33444
V 561.274.9186 | F 561.274.9196
AA26001617 | IB26001056

WWW.RJARCHITECTURE.COM

830 NORTH LAKE AVENUE
DELRAY BEACH, FLORIDA

FLORIDA LICENSURE

AA26001617 | IB26001056

COMMISSION # 18-003

DESIGNER: RJ

DRAWN BY: JH

PLAN REVIEW: RJ

SUBMITTALS:

ISSUE FOR PERMIT: 05.14.18

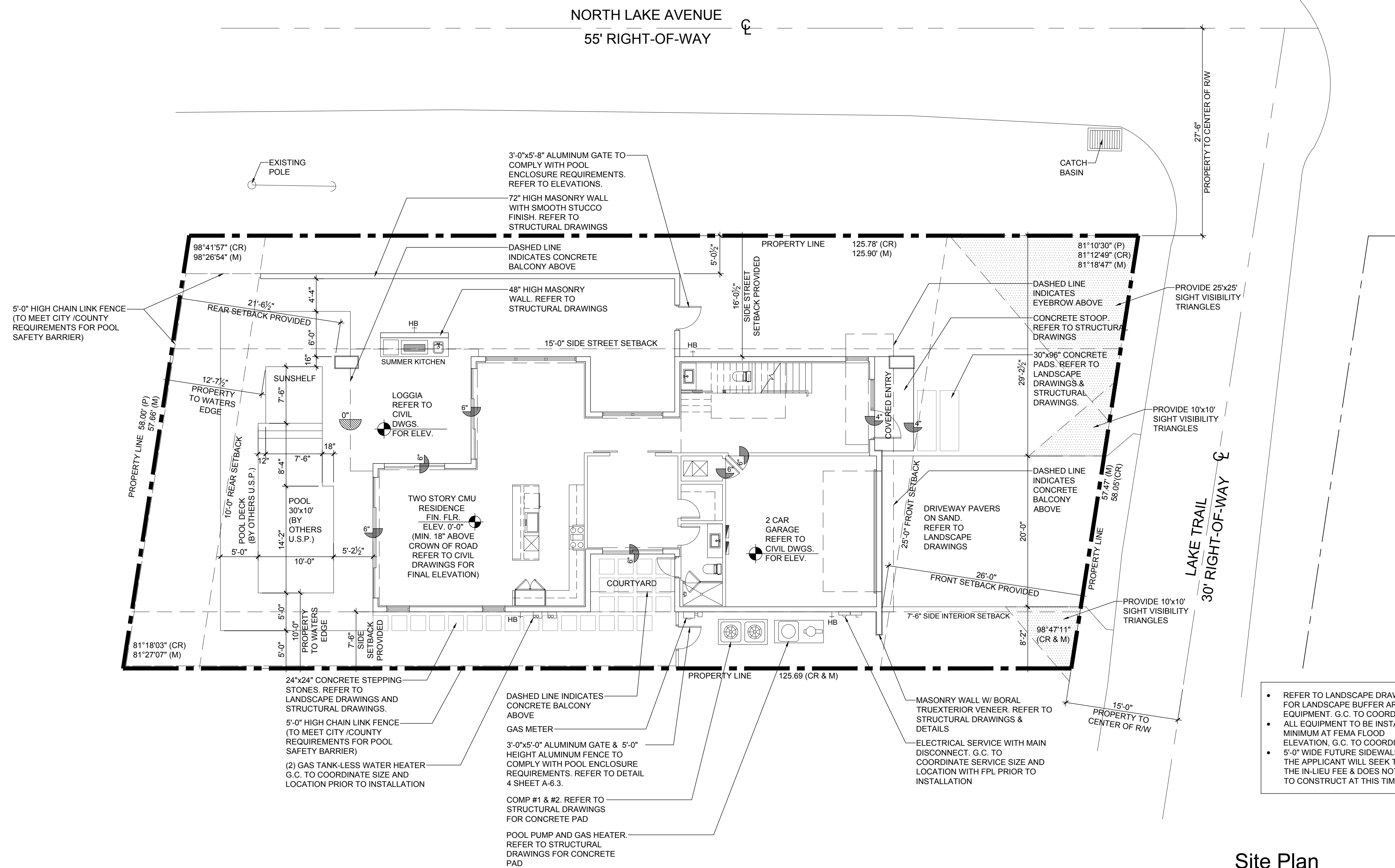
REVISIONS:

SITE PLAN

SP-1

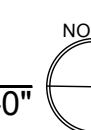
RICHARD JONES ARCHITECTURE

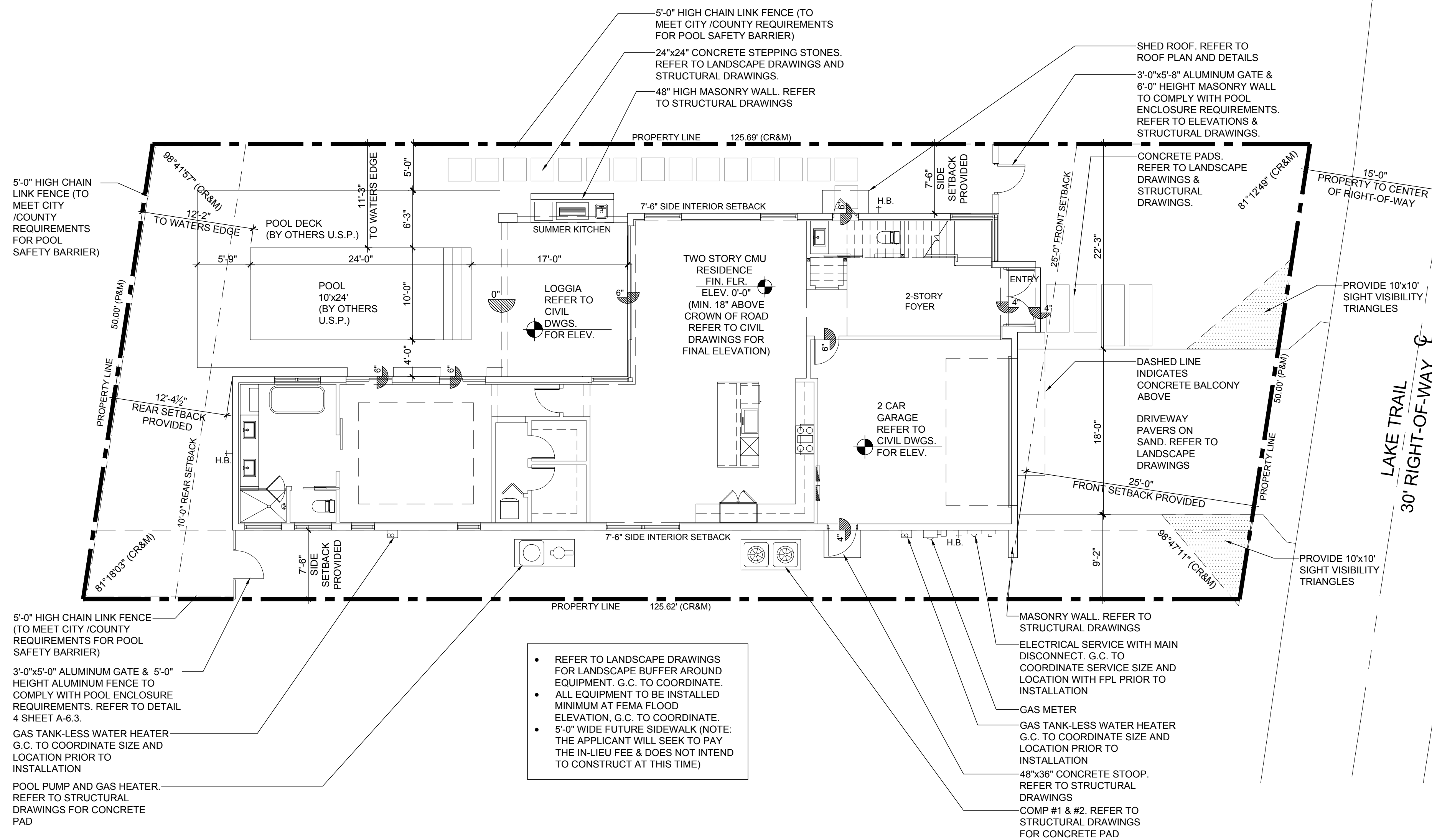
© COPYRIGHT 2018 BY RICHARD JONES ARCHITECTURE INCORPORATED ALL RIGHTS RESERVED NO PART OF THESE PLANS, DESIGNS, OR INFORMATION MAY BE REPRODUCED, COPIED OR UTILIZED GRAPHICALLY IN ANY FORM WHATSOEVER WITHOUT THE EXPRESS WRITTEN CONSENT OF RICHARD JONES ARCHITECTURE INCORPORATED.



Site Plan

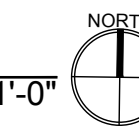
Scale: 1/8"=1'-0"





Site Plan

Scale: 1/8"=1'-0"



LEGAL DESCRIPTION

LOT 18, BLOCK D, LA-HACIENDA, ACCORDING TO THE PLAT THEREOF RECORDED IN PLAT BOOK 15, PAGE 6 OF THE PUBLIC RECORDS OF PALM BEACH COUNTY, FLORIDA.

BUILDING SETBACKS

	Required	Provided
Front Setback (East)	25'-0"	25'-0"
Rear Setback (West)	10'-0"	12'-4 1/2"
Side Setback (North)	7'-6"	7'-6"
Side Setback (South)	7'-6"	7'-6"

BUILDING AREA CALCULATIONS

GROUND FLOOR A/C	1,693 SQ.FT.
SECOND FLOOR A/C	1,430 SQ.FT.
TOTAL A/C	3,123 SQ.FT.

GARAGE	452 SQ.FT.
LOGGIA	248 SQ.FT.
COVERED ENTRY	24 SQ.FT.
COVERED BALCONIES	248 SQ.FT.

TOTAL SQ.FT. 4,095 SQ.FT.

SITE DATA CHART

	PROVIDED	REQUIRED
Bldg Footprint =	2,417 SQ.FT.	
Impervious Area =	3,784 SQ.FT.	
Pervious Area =	2,431 SQ.FT.	
Total Site Area =	6,215 SQ.FT.	
Lot Coverage =	38.89%	
% Impervious =	60.9%	
% Pervious =	39.1%	
% Open Space =	39.1%	25% Non-Vehicular
Lot Width =	50'-0"	
Lot Depth =	±125'-9"	
Lot Frontage =	50'-0"	
Building Height =	29'-11"	35'-0"
Total Building Floor Area =	4,095 SQ.FT.	

RICHARD JONES
ARCHITECTURE

10 S.E. FIRST AVENUE | SUITE 102
DELRAY BEACH, FLORIDA 33444
V 561.274.9186 | F 561.274.9196
AA26001617 | IB26001056

WWW.RJARCHITECTURE.COM

768 LAKE TRAIL
DELRAY BEACH, FLORIDA

FLORIDA LICENSURE

AA26001617 | IB26001056

COMMISSION # 18-003
DESIGNER: RJ
DRAWN BY: JH
PLAN REVIEW: RJ

SUBMITTALS:
ISSUE FOR PERMIT: 05.14.18

REVISIONS:
1 BUILD. DEP. 07.26.18
COMMENTS:

SITE PLAN

SP-1

RICHARD JONES ARCHITECTURE

© COPYRIGHT 2018 BY RICHARD JONES ARCHITECTURE INCORPORATED ALL RIGHTS RESERVED. NO PART OF THESE PLANS, DESIGNS, OR INFORMATION MAY BE REPRODUCED, COPIED OR UTILIZED GRAPHICALLY IN ANY FORM WHATSOEVER WITHOUT THE EXPRESS WRITTEN CONSENT OF RICHARD JONES ARCHITECTURE INCORPORATED.

LEGAL DESCRIPTION

LOT 22, BLOCK D, LA-HACIENDA, ACCORDING TO THE PLAT THEREOF RECORDED IN PLAT BOOK 15, PAGE 6 OF THE PUBLIC RECORDS OF PALM BEACH COUNTY, FLORIDA.

BUILDING SETBACKS

	Required	Provided
Front Setback (East)	25'-0"	25'-0 1/2"
Rear Setback (West)	10'-0"	22'-10"
Side Street Setback (North)	15'-0"	7'-6"
Side Setback (South)	7'-6"	16'-0"

BUILDING AREA CALCULATIONS

GROUND FLOOR A/C	1,422 SQ.FT.
SECOND FLOOR A/C	1,775 SQ.FT.
TOTAL A/C	3,197 SQ.FT.

GARAGE	431 SQ.FT.
LOGGIA	246 SQ.FT.
ENTRY	96 SQ.FT.
COVERED BALCONIES	372 SQ.FT.
OPEN BALCONY	56 SQ.FT.
TOTAL SQ.FT.	4,398 SQ.FT.

SITE DATA CHART

	PROVIDED	REQUIRED
Bldg Footprint =	2,195 SQ.FT.	
Impervious Area =	3,834 SQ.FT.	
Pervious Area =	3,352 SQ.FT.	
Total Site Area =	7,186 SQ.FT.	
Lot Coverage =	30.54%	
% Impervious =	53.3%	
% Pervious =	46.7%	
% Open Space =	46.7%	25% Non-Vehicular
Lot Width =	58'-0"	
Lot Depth =	±125'-3"	
Lot Frontage =	58'-0"	
Building Height =	26'-4"	35'-0"
Total Building Floor Area =	4,398 SQ.FT.	

RICHARD JONES
ARCHITECTURE

10 S.E. FIRST AVENUE | SUITE 102
DELRAY BEACH, FLORIDA 33444
V 561.274.9186 | F 561.274.9196
AA26001617 | IB26001056

WWW.RJARCHITECTURE.COM

750 LAKE TRAIL
DELRAY BEACH, FLORIDA

FLORIDA LICENSURE

AA26001617 | IB26001056

COMMISSION # 18-003
DESIGNER: RJ
DRAWN BY: JH
PLAN REVIEW: RJ

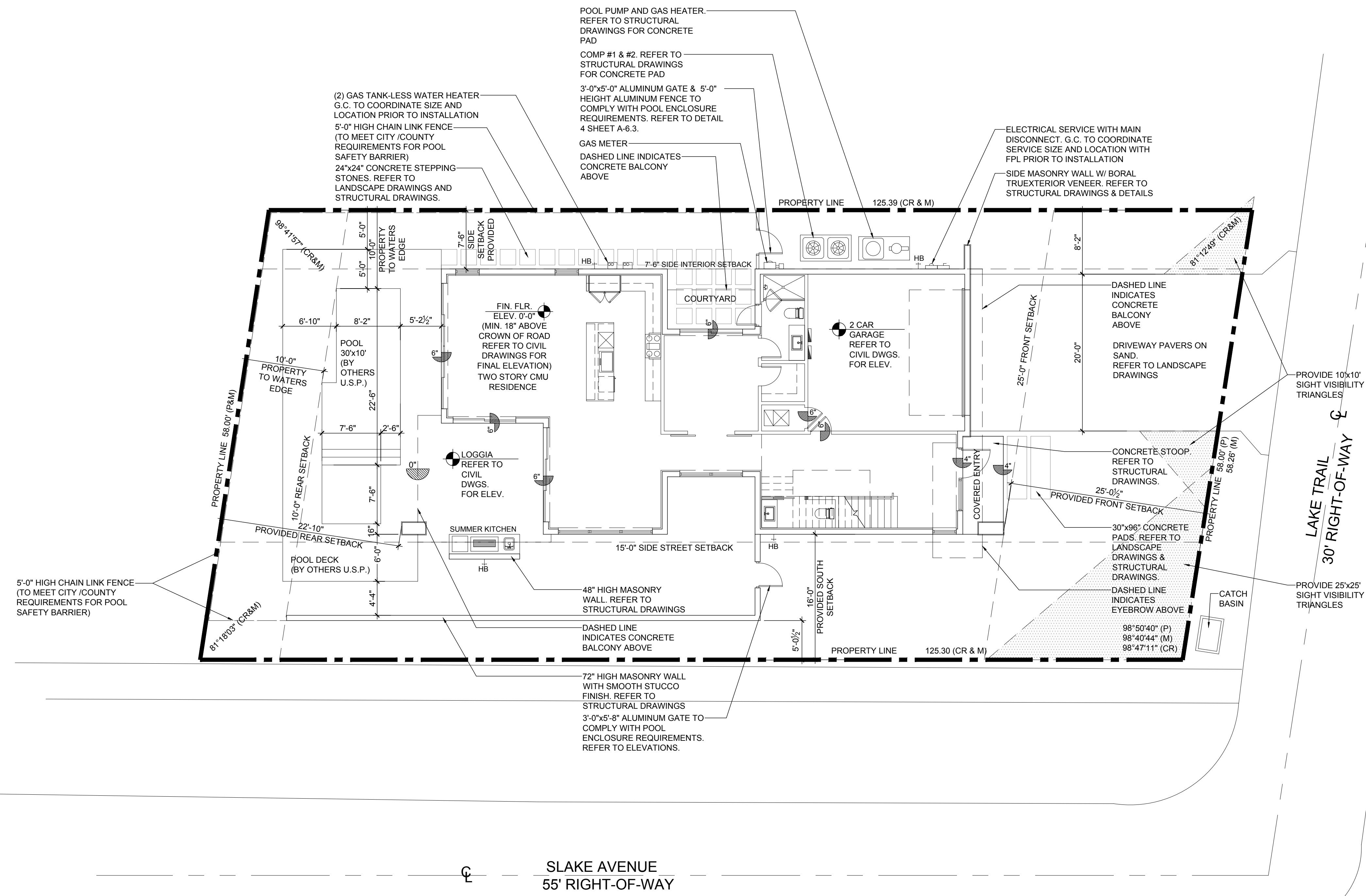
SUBMITTALS:
ISSUE FOR PERMIT: 05.14.18

REVISIONS:

SITE PLAN

SP-1

RICHARD JONES ARCHITECTURE



- REFER TO LANDSCAPE DRAWINGS FOR LANDSCAPE BUFFER AROUND EQUIPMENT. G.C. TO COORDINATE.
- ALL EQUIPMENT TO BE INSTALLED MINIMUM AT FEMA FLOOD ELEVATION. G.C. TO COORDINATE.
- 5'-0" WIDE FUTURE SIDEWALK (NOTE: THE APPLICANT WILL SEEK TO PAY THE IN-LIEU FEE & DOES NOT INTEND TO CONSTRUCT AT THIS TIME)

Site Plan

Scale: 1/8"=1'-0"

SLAKE AVENUE
55' RIGHT-OF-WAY