



HOME COFFEE ROASTER

USER MANUAL

For use with the IKAWA Home App
Model No: Karisimbi 4507

IMPORTANT SAFEGUARDS — SAVE THESE INSTRUCTIONS

- Read all instructions.
- Do not touch hot surfaces. Use handles or knobs. This is the hot surface symbol. It indicates that a surface gets hot and must not be touched.



- To protect against electrical shock do not immerse cord, plugs, or the appliance in water or other liquid.
- Close supervision is necessary when any appliance is used by or near children.
- Unplug from outlet when not in use and before cleaning. Allow to cool before putting on or taking off parts.
- Do not operate any appliance with a damaged cord or plug or after the appliance malfunctions or has been damaged in any manner. Return appliance to the nearest authorized service facility for examination, repair, or adjustment.
- The use of accessory attachments not recommended by the appliance manufacturer may cause injuries.
- Do not use outdoors.
- Do not let cord hang over edge of table or counter, or touch hot surfaces.
- These safety instructions continue on the following page.
- Do not place on or near a hot gas or electric burner, or in a heated oven.
- Extreme caution must be used when moving an appliance containing hot oil or other hot liquids.

THESE SAFETY INSTRUCTIONS CONTINUE ON THE FOLLOWING PAGE.

- Always attach plug to appliance first, then plug cord into the wall outlet. To disconnect, turn any control to off, then remove plug from wall outlet.
- Do not use appliance for other than intended use.
- The instructions for cleaning this appliance (located on page 26) must be followed.
- This appliance must not be operated by means of an external timer or separate remote-control system.
- In order to override the smart enabled function, unplug the appliance.
- This appliance is intended to be used in household and similar applications such as:
 - Staff kitchen areas in shops, offices and other working environments;
 - Farmhouses
 - By clients in hotels, motels and other residential type environments;
 - Bed and breakfast type environments.
- This appliance can be used by children aged from 8 years and above and persons with reduced physical, sensory or mental capabilities or lack of experience and knowledge if they have been given supervision or instruction concerning use of the appliance in a safe way and understand the hazards involved. Children shall not play with the appliance. Cleaning and user maintenance shall not be made by children unless they are older than 8 and supervised. Keep the appliance and its cord out of reach of children less than 8 years.
- Save these instructions.

Never leave the
appliance unattended
while in use or powered.



CONSIGNES DE SECURITE IMPORTANTES — CONSERVEZ CES INSTRUCTIONS

- Lisez toutes les instructions.
- Ne pas toucher les surfaces chaudes. Utiliser les poignées prévues à cet effet. Ceci est le pictogramme pour les surfaces chaudes. Il indique les surfaces pouvant devenir très chaudes et qui ne doivent pas être touchées.



- Afin d'éviter tout risque d'électrocution ne pas mettre les câbles, prises ou autre partie de l'appareil dans l'eau ou dans quelque autre liquide.
- Faire preuve d'une grande prudence lors de l'utilisation de l'appareil par ou à proximité d'enfants.
- Débrancher l'appareil lorsqu'il n'est pas en état d'utilisation et avant nettoyage. Laissez refroidir l'appareil avant d'ajouter ou de retirer des pièces.
- Ne pas utiliser si les câbles ou prises sont endommagés, en cas de quelconques dysfonctionnements ou autres dommages de l'appareil. Restituer l'appareil dans le centre de réparation le plus proche pour toute vérification, réparation ou ajustement.
- L'utilisation d'accessoires non recommandés par le fabricant peut causer dommage et blessures.
- Ne pas utiliser en extérieur.
- Ne pas laisser le câble pendre au bord d'une table, d'un plan de travail ou sur une surface chaude.
- Ne pas mettre l'appareil sur ou près d'un brûleur à gaz allumé, d'un élément électrique ou dans un four allumé.
- Faire preuve d'une grande prudence lors du déplacement d'un appareil contenant de l'huile ou autre liquide très chaud.

- Toujours brancher le câble à l'appareil avant de brancher le câble à la prise de terre. Pour arrêter l'appareil, l'éteindre puis le débrancher ensuite de la prise de terre.
- Ne pas utiliser l'appareil à d'autres fins que celles prévues par le fabricant.
- Pour le nettoyage de l'appareil, se référer aux consignes page 26.
- Ne pas utiliser l'appareil à l'aide d'un minuteur ou d'une télécommande externes.
- Pour arrêter le système Smart, débrancher l'appareil.
- Cet appareil est destiné à être utilisé dans des applications domestiques et similaires telles que:
 - Cuisine du personnel dans les magasins, bureaux et autres environnements de travail;
 - Fermes
 - Pour clients d'hôtels, motels et autres environnements de type résidentiels;
 - Environnements de type chambres d'hôtes.
- Cet appareil peut être utilisé par des enfants âgés plus de 8 ans et des personnes ayant des capacités physiques, sensorielles ou mentales réduites ou un manque d'expérience et de connaissances s'ils reçoivent une supervision ou des instructions concernant l'utilisation de l'appareil en toute sécurité et comprennent les risques impliqués. Les enfants ne doivent pas jouer avec l'appareil. Le nettoyage et l'entretien par l'utilisateur ne doit pas être effectué par des enfants à moins qu'ils ne soient âgés de plus de 8 ans et supervisés. Gardez l'appareil et son cordon hors de portée de main des enfants de moins de 8 ans.
- Conserver ces consignes de sécurité.

Ne pas laisser l'appareil sans surveillance quand il est allumé ou en état de marche.



SAFE ROASTING PARAMETERS

If the roaster is programmed with an extreme roast recipe the coffee beans will become burnt and could catch fire. We recommend the roaster is programmed with roast recipes that do not exceed the time limits shown below. The below limits will not restrict you from roasting coffee to a dark roast degree, this advice is for safe use of the roaster.

Between 275–290°C (527–560°F) maximum 2 minutes

Between 250–275°C (482–527°F) maximum 8 minutes

Under 250°C (482°F) unlimited time

WARNING:

Do not exceed recommended roast time and temperatures.



PARAMÈTRES DE SECURITE DU TORREFACTOR

Si le torréfacteur est programmé avec un profile de torréfaction extrême, les grains de café seront brûlés et pourraient prendre feu. Nous recommandons que la torréfaction ne dépasse pas les durées limitées indiquées ci-dessous. Les limites ci-dessous ne vous empêcheront pas de torréfier le café, ce conseil est pour une utilisation du torréfacteur en toute sécurité.

Entre 275-290°C (527-560°F) maximum 2 minutes.

Entre 270-275°C (482-527°F) maximum 8 minutes.

En dessous 250°C (482°F) Duree illimitée.

ATTENTION:

Ne dépassez pas le temps
et les températures de
torréfaction recommandées.



Contents

01	Welcome and contents of the pack	10
02	Your IKAWA Home Coffee Roaster	11
03	Quick start guide	12
04	Positioning your roaster	14
05	Setting-up your roaster	15
06	Connecting the IKAWA At Home App to the roaster	16
07	Roasting	17
08	Removing the beans from the roaster	23
09	Troubleshooting	24
10	Maintenance, repair and disposal	26
11	One year guarantee	27



Designed and manufactured by IKAWA in London.

www.ikawahome.com
hereforyou@ikawacoffee.com



01 — Welcome

**Ikawa means coffee in Kirundi,
the language of Burundi.**

Thank you for purchasing an IKAWA Home Coffee Roaster.

Products manufactured by IKAWA are safe and without risk provided they are installed, used and maintained in good working order in accordance with our instructions and recommendations. To enjoy the full potential of your new product, please take the time to read this guide thoroughly, and keep it handy for future reference.

At IKAWA, we are keeping our At Home offering fresh. We have new green coffees, roast recipes and information about coffee roasting on our website. For updates visit www.ikawahome.com

NOTICE:

- 1 Read all of these instructions including important safeguards.
- 2 Retain this guide for later use.
- 3 Pass on this guide in the event of change of ownership.
- 4 Follow all warnings, cautions and instructions contained in this guide.
- 5 When the product has reached the end of its serviceable life, it should be disposed of in accordance with WEEE directive.

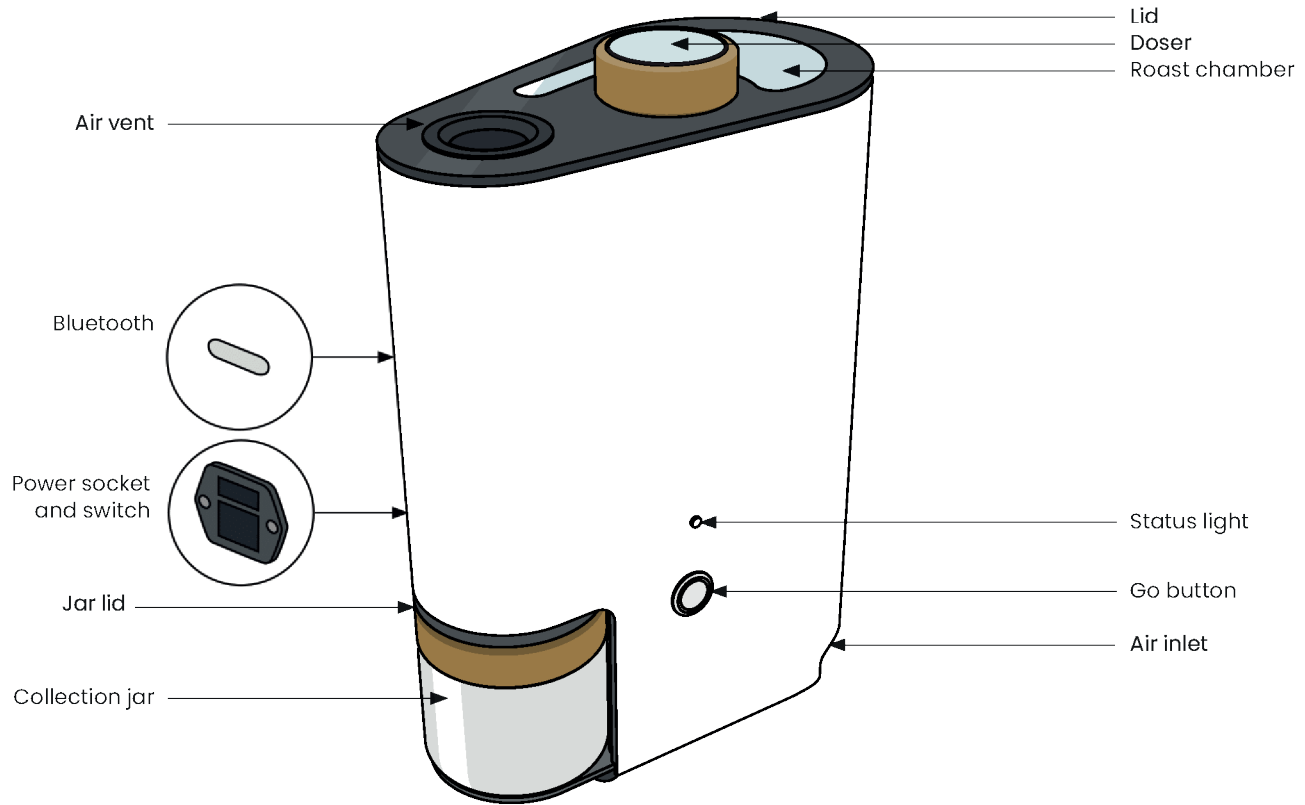


Contents of the pack

- ① One IKAWA Home Coffee Roaster
- ② One doser
- ③ One jar lid
- ④ Two glass jars
- ⑤ One power cord (country specific)

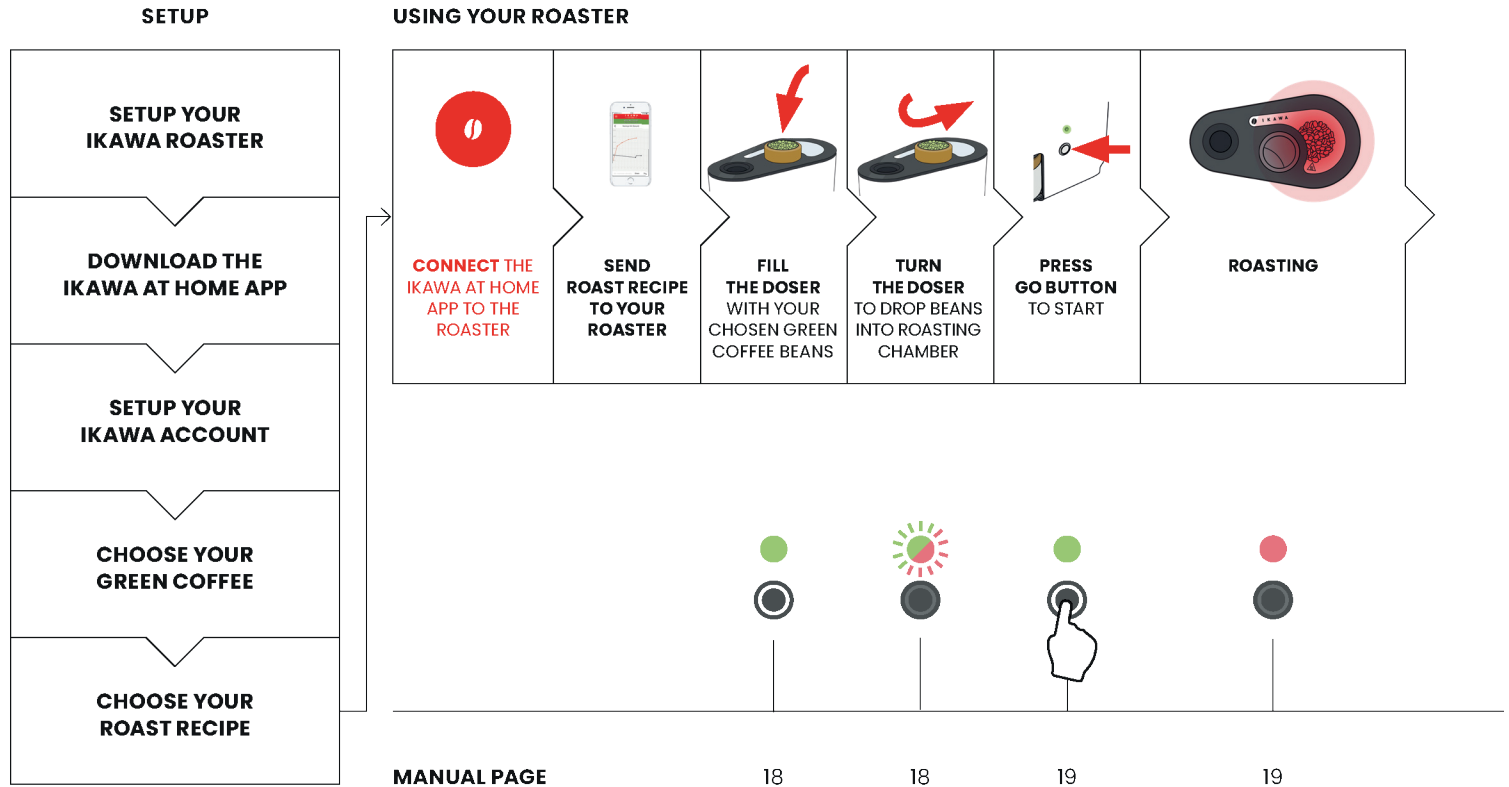


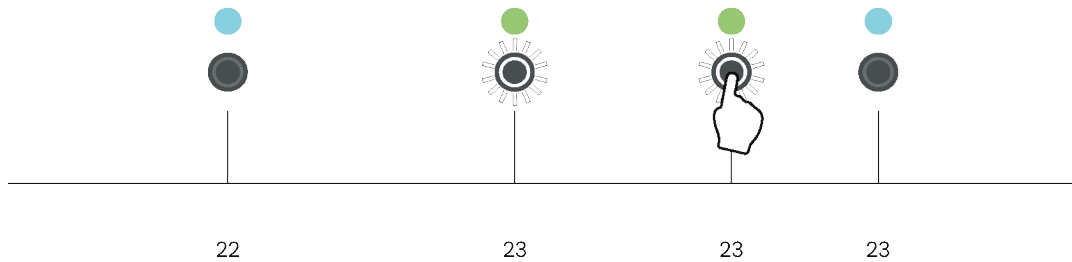
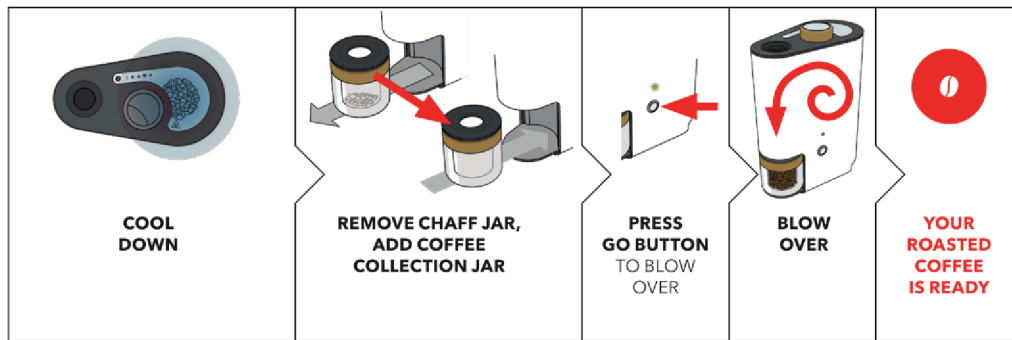
02 — Your IKAWA Home Coffee Roaster



03 — Quick start guide

Read all instructions carefully before using the roaster.





04 — Positioning your roaster

1 - Place your roaster on a hard surface with plenty of space around it to access all of the sides and the top of the roaster. Never use the roaster on a soft surface of tablecloth as that will affect the airflow.

2 - During the roasting process hot air is released through the vent of the roaster. Do not obstruct the vent or place anything on top of it.

CAUTION

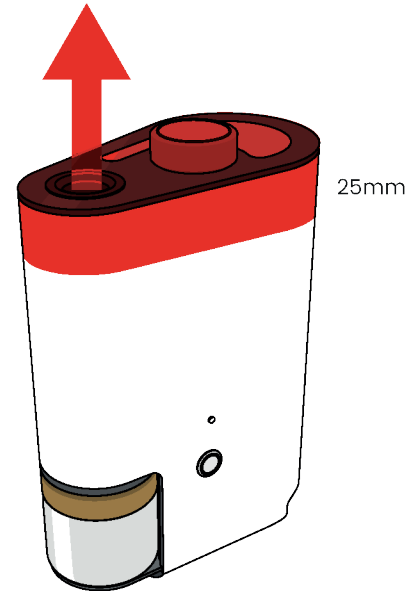
The roaster heats up during the roasting process and some surfaces can get very hot. Take care as touching these surfaces may cause injury.

Do not touch any parts of the lid or air vent.

Do not touch surfaces of the roaster that are within 25mm of the lid.

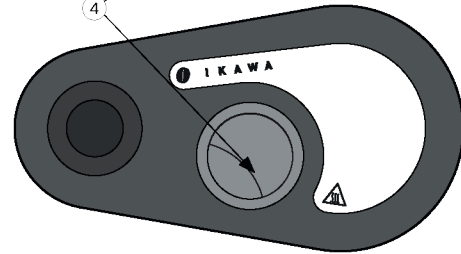
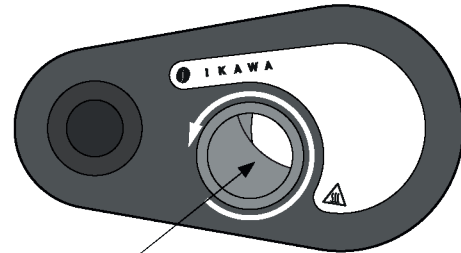
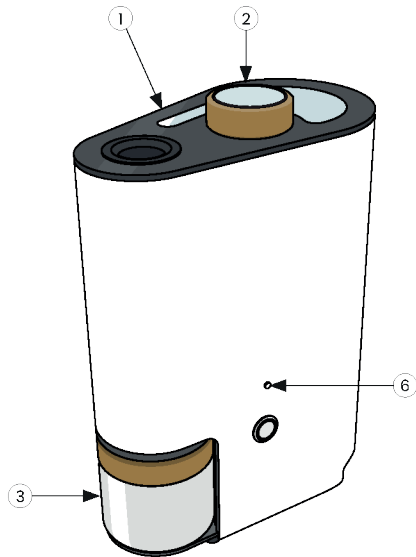


This is the hot surface symbol. It indicates that the surface is hot and must not be touched.



05 — Setting up your roaster

- 1 - Ensure the lid is on the roaster.
- 2 - Place the doser into the hole at the top of the roaster.
- 3 - Slide the jar with the rubber lid on top into the opening at the bottom of the roaster.
- 4 - Ensure that the doser completely seals off the roasting chamber.
- 5 - If not, turn the doser until it is sealed.
- 6 - Status light will flash green and red while doser is not closed.



CAUTION:

Ensure that the jar with rubber lid is in place.
Ensure the roaster lid is in place.



06 — Connecting the IKAWA At Home App to the Roaster

Before starting this step ensure that you have gone through the steps on the previous page and that your roaster is plugged into a wall socket.

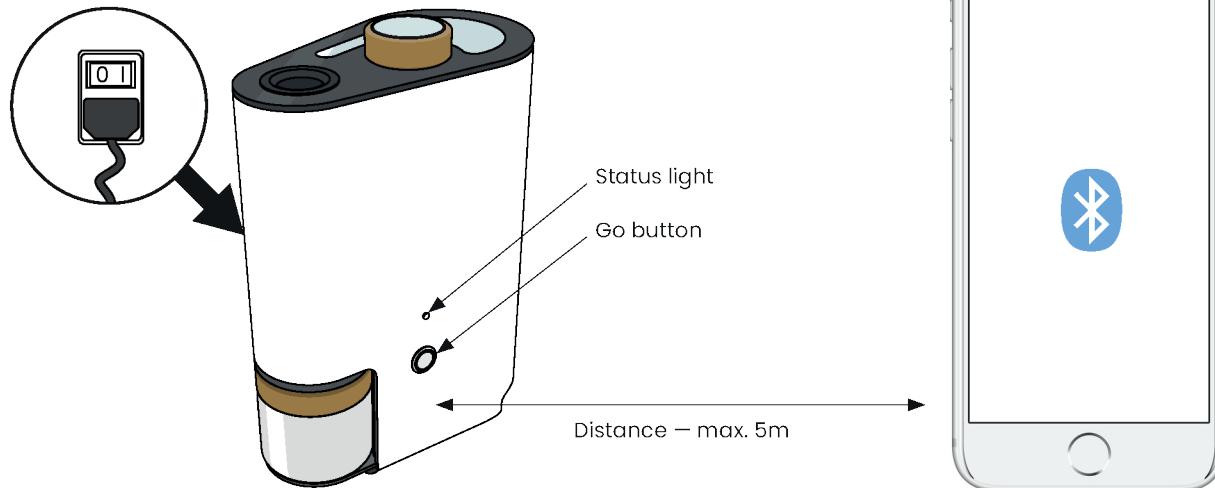
Turn the roaster ON by pressing the I-side of the roaster's power switch, located on the left side.

The status light should now be green and the go button should light-up white.

(If the status light flashes red/green alternating – shut the doser as indicated on the previous page).

When Bluetooth is enabled on your iOS or Android device, the IKAWA At Home App will automatically connect to the roaster.

Once connected, program the roaster with a roast recipe. Instructions on how to use the IKAWA Home App are provided separately as the app design can change over the life of the roaster. Instructions for the latest app are available at www.ikawahome.com



07 — Roasting: recommended roast recipes

IKAWA have created recommended roast recipes to accompany our range of green coffees available from www.ikawahome.com. The roast recipes are carefully designed to bring out the best from the coffee beans and we recommend starting with these.

WARNING:



Do not attempt
to roast materials
other than coffee.

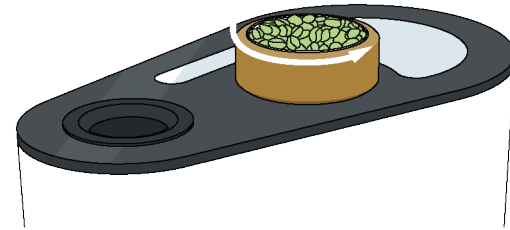
07 — Roasting: adding green coffee beans

Fill the doser at the top of the roaster with green coffee beans.

Fill the doser up to the top, which will be approximately 100 grams, or weigh your green coffee in advance. We suggest you use the IKAWA coffee tray to pour the coffee into the doser.

Rotate the doser by 180° so that all the beans fall into the roasting chamber. Then turn the doser back so that it closes the Roasting Chamber completely.

If the doser is not properly closed the roast will not start.



07 — Roasting: starting the roast

CAUTION:

Hot surface — the roaster lid could be very hot do not touch any parts or surfaces other than the cork grip on the doser.

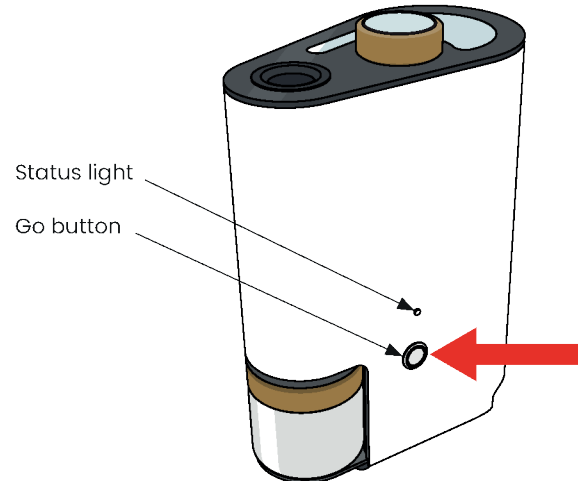
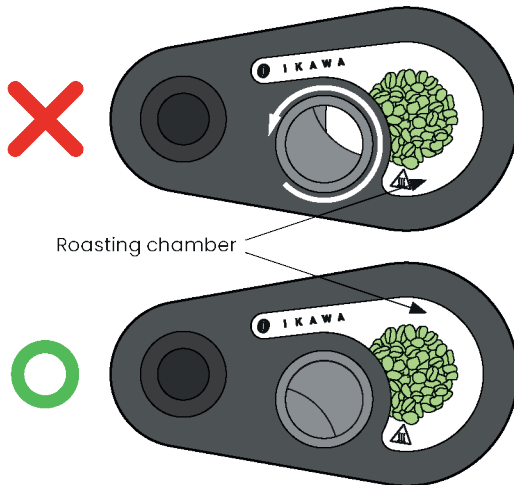


Ensure the roasting chamber is completely closed off and the status light is green

Start the roasting process by pushing the go button on the roaster. When roasting commences, the status light will turn red.

During the roasting process, if the IKAWA At Home App is connected to the roaster via Bluetooth it will plot the measured temperature.

Even if the app is not connected, the roaster will execute the roast recipe stored in its memory — the last one used.



07 — Roasting: safety during the roast

If the roaster has been programmed with a roast recipe that is not suitable for the coffee, the beans can burn or in extreme cases catch fire.

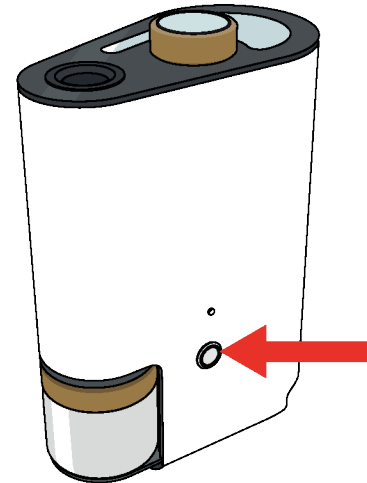
See page 6 for the maximum time and temperature limits for roast recipes.

We advise you follow these safety steps during the roasting process.

CAUTION

When the roast starts ensure that the beans are rotating freely.

If the beans are not rotating freely stop the roast by pressing the go button.



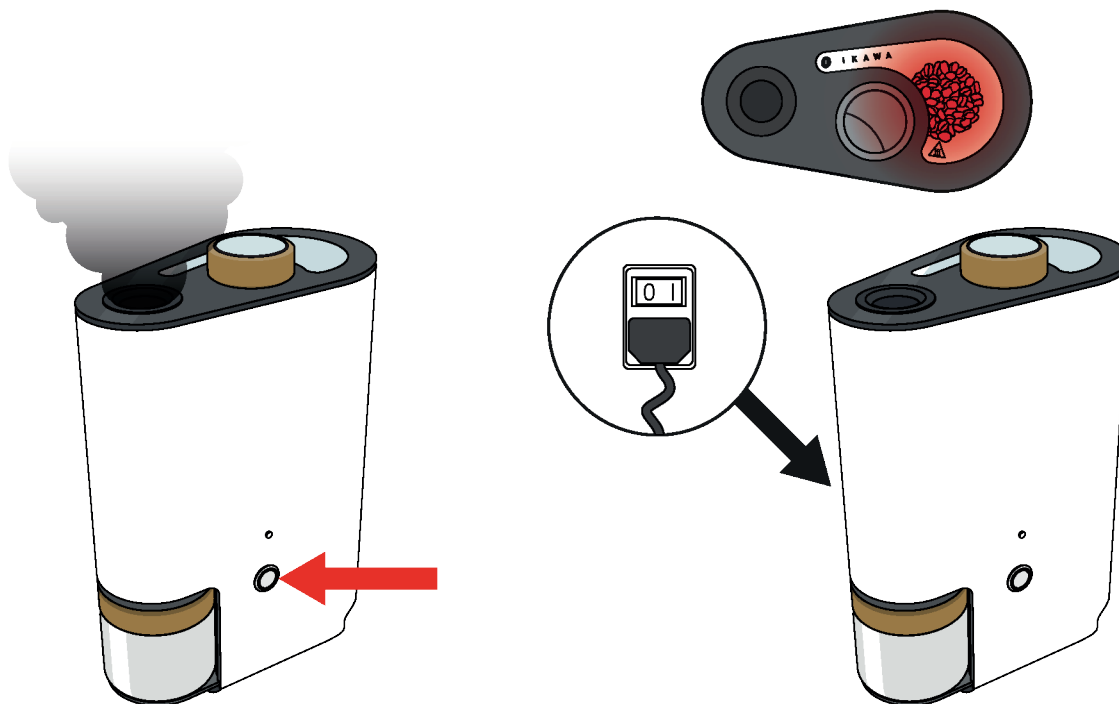
CAUTION

If the roaster starts to produce excessive smoke press the go button.



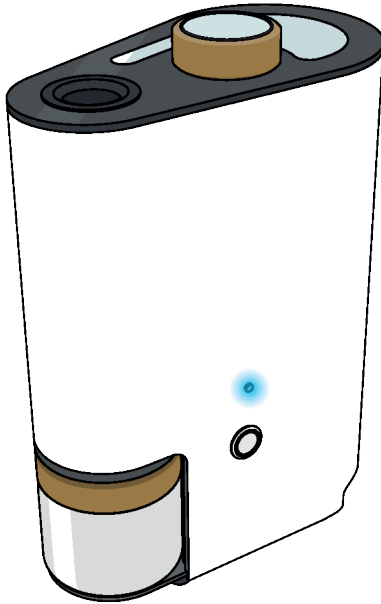
CAUTION

If the coffee beans in the roast chamber catch fire, switch the roaster off at the power inlet or wall socket and then wait until the fire has gone out. The fire will be contained within the roaster.

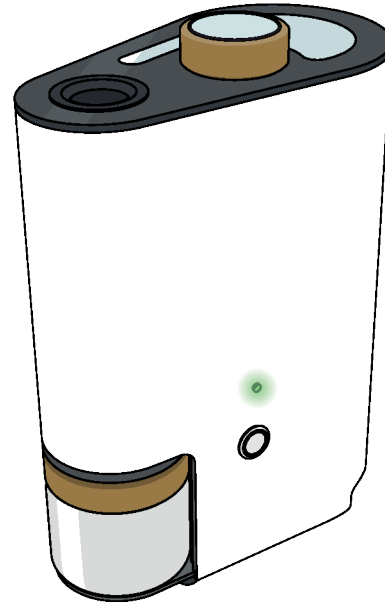


07 — Roasting: cool down

Once the roasting process is finished, the roaster goes into cool down mode. This is indicated by the blue status light on the roaster.



During this phase the roaster pulls cool air through the roast chamber to cool the beans. Wait until the fan stops running and the status light turns green. The cool down process has now finished.



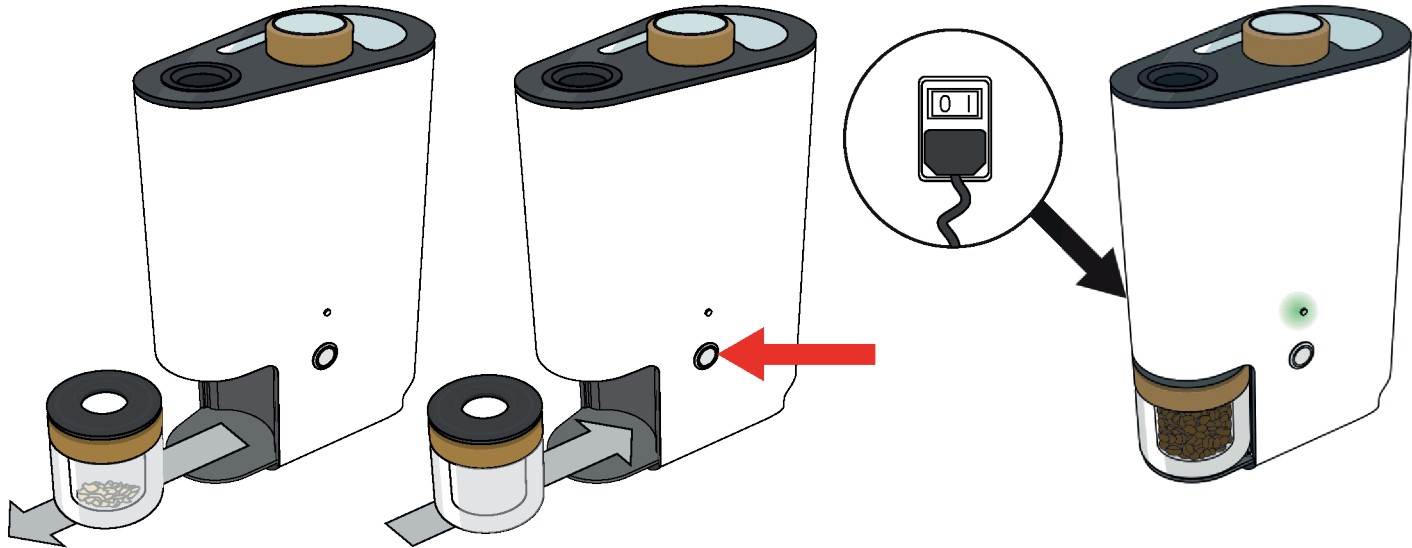
08 — Removing the beans from the roaster

- 1 - Remove the glass jar, containing chaff from the roaster.
- 2 - Place the jar lid on the second glass jar and put it back into the same position in the roaster.
- 3 - When empty glass jar is in situ, press the go button, the beans will blow into the collection jar.
- 4 - If for any reason the beans do not all blow over, the roaster can be switched back to 'ready to blow over' state by pressing and holding the Go button — then repeat step 3.

- 5 - Your IKAWA roasted coffee is ready. Remove the jar from the roaster.

- 6 - You can now share your profile by email or social media, start another roast, or edit the profile for next time.

7 - SWITCH THE ROASTER OFF AFTER ROASTING



09 — Troubleshooting

PROBLEM:

The roaster suddenly starts to cool during a roast and the status light shines purple.

CAUSE:

A thermally activated switch prevents the case heating to an unsafe temperature. This switch should not activate under normal roasting conditions but may activate if the roaster was programmed with an extreme roast or in high ambient temperatures. If the thermal safety switch is activated the heating element will switch off, the status light will shine purple and the fan will remain on for 10 minutes.

SOLUTION:

Once the cooling fan switches off, restart the roaster. The roaster should then work as normal. If the roaster still does not work, or repeatedly overheats contact **hereforyou@ikawahome.com**, quoting your roaster serial number.

PROBLEM:

The roaster starts to cool during a roast or does not heat up but otherwise remains operational.

CAUSE:

The most likely case is that the heating element has failed.

SOLUTION:

Contact **hereforyou@ikawahome.com**, quoting your roaster serial number.

PROBLEM:

The light on the roaster shines a purple colour and the roaster does not work.

CAUSE:

The roaster in an error state that could be triggered by a number of internal problems.

SOLUTION:

Contact **hereforyou@ikawahome.com**, quoting your roaster serial number.

PROBLEM:

The beans inside the roaster do not rotate.

CAUSE:

The roaster may be programmed with a roast profile with inadequate air flow.

SOLUTION:

Program the roaster with a higher fan speed using the IKAWA At Home App. If this does not fix the problem contact **hereforyou@ikawahome.com**, quoting your roaster serial number

PROBLEM:

I cannot get my beans out of the roasting chamber.

CAUSE:

This may happen because your beans have not roasted sufficiently. They may be too heavy to be transferred from the roasting chamber into the jar.

SOLUTION 1:

Press and hold the start button to return the roaster to ready to blow over mode. Press the start button again and the roaster will enter blow over mode again. This procedure can be repeated if need be.

SOLUTION 2:

- 1 - Ensure your roaster is cooled down by letting it stand for at least 30 minutes.
- 2 - Then take out the doser and jar. Remove the glass lid by pulling upwards on each side (the lid is attached magnetically)
- 3 - You can remove the beans by tilting the roaster on it's side to pour them out.

10 — Maintenance, repair and disposal

Before attempting any maintenance ensure that the roaster is unplugged from any power source, and that the roaster is at room temperature.



The roasting chamber can be cleaned by wiping gently with a slightly damp cloth.

The jar can be washed with warm, soapy water but only when the cork grip is removed. The cork should not get wet.

The jar cannot go in the dishwasher or microwave.

To clean the glass lid, first remove the doser. Second, remove the glass lid by pulling upwards on each side (the lid is attached magnetically).

You can wash the glass lid including the metal vent with warm, soapy water. The lid cannot go in the dishwasher or microwave.

We do not recommend cleaning the inside of the roasting chamber or cyclone, as this risks breaking the temperature sensor tip and or water entering the roaster.



WARNING:

Do not repair the IKAWA system yourself. By doing so you invalidate any warranty, and risk injury or death.



If your system is not working correctly, refer to Chapter 9 (Troubleshooting).

If your IKAWA Home Coffee Roaster is no longer working and not under warranty, contact the team at **hereforyou@ikawahome.com** for assistance.

DISPOSAL:

Waste and electrical products should not be disposed of with household waste.

WARNING:

Ensure that no liquid penetrates the holes in the bottom of the roasting chamber.



11 — One year guarantee

This product is guaranteed for one year from the date of purchase.

If any defect arises due to faulty materials or workmanship faulty products must be returned to IKAWA for repair or replacement.

The following conditions apply:

- 1 - The product must be installed and used in accordance with the instructions contained in this instruction guide.
- 2 - The product is household use only. Commercial use of this product will invalidate the warranty.
- 3 - It does not cover wear and tear, damage, misuse or consumable parts.
- 4 - IKAWA has no responsibility for incidental or consequential loss or damage.

Your warranty will be activated once the roaster arrives with you.

Please quote your serial number if you need to contact us about an issue.

©IKAWA limited 2021
www.ikawahome.com | hereforyou@ikawahome.com

IKAWA Ltd. Unit 9, Bayford Street Business Centre,
Bayford Street, London, E8 3SE, United Kingdom

DESIGNED AND MADE BY
IKAWA IN LONDON

