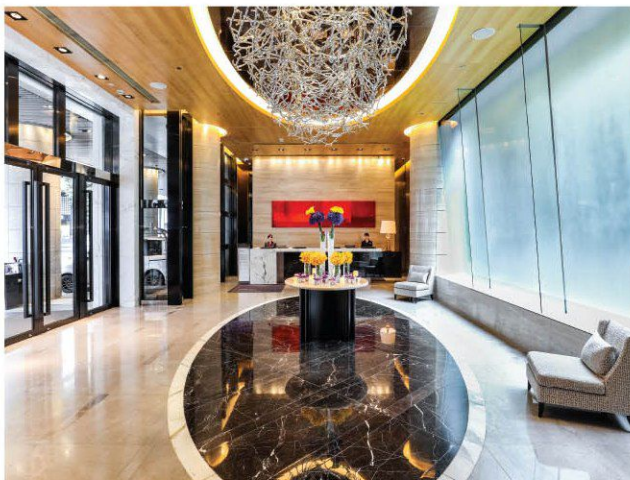




WELCOME TO CROWNE PLAZA HONG KONG CAUSEWAY BAY

Situated at the center of Causeway Bay, right next to Happy Valley Racecourse and Times Square, the Hotel provides easy access to major landmarks and attractions via all means of transportation including taxi, bus, tram and the MTR.



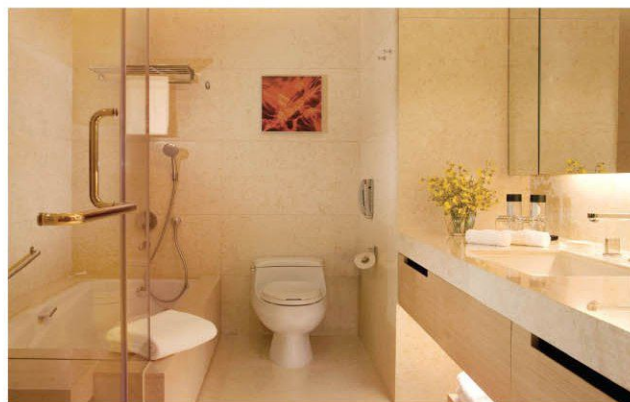
ACCOMMODATION

Our 263 spacious guest rooms and executive suites ranging from 34 to 84 sq. m. in size offer plenty of space and convenient access for business or leisure travelers. With a spectacular city or Happy Valley Racecourse view, each room is well-equipped with deluxe amenities, Wi-Fi and broadband internet coverage, a 42" TV and 5.1 surround sound system. Guests can enjoy ultimate comfort and rest assured that everything they need for a successful and fruitful trip is prepared.

Book with us and join IHG® Rewards Club.



RACECOURSE VIEW ROOM



BATHROOM



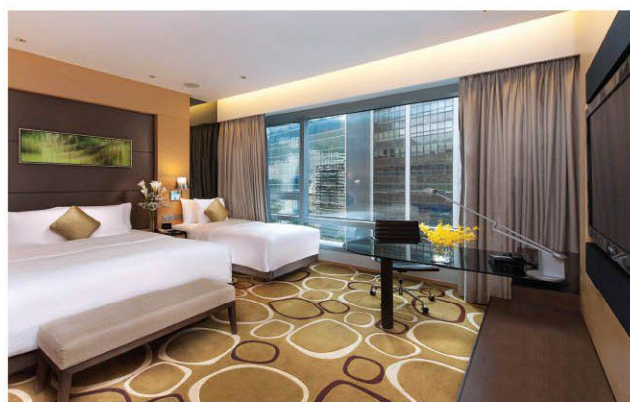
DELUXE ROOM



FAMILY ROOM (DOUBLE & DOUBLE)



SUPERIOR ROOM



FAMILY ROOM (KING & SINGLE)



EXECUTIVE SUITE - LIVING ROOM



EXECUTIVE SUITE - BEDROOM

SERVICES & ROOM AMENITIES

IN-ROOM AMENITIES & BEDDING

- Signature Simmons Beautyrest mattress
- 100% white goose down pillows and duvets
- Hypoallergenic pillows (upon request)
- 100% cotton, 330 thread count linens
- Electronic safe in laptop size
- Full room acoustic with double-glazed windows
- Full-size executive desk
- Dedicated over-bed lights
- Complete blackout curtains
- Fully-stocked mini bar
- Tea and coffee

BATHROOM AMENITIES

- Individual shower cubicle with rainforest showerhead
- Bathtub
- 100% cotton oversized bath towels
- 100% cotton terry bathrobe
- Premium toiletries

IN-ROOM ENTERTAINMENT

- 42" TV with selected cable and satellite TV channels
- On demand in-house movies
- 5.1 surround sound system

IN-ROOM COMMUNICATIONS FACILITIES

- Wi-Fi and broadband internet coverage
- Dual-line with speaker for teleconferencing
- Voicemail system
- Audio, visual and USB data connectivity from the desk to TV display and sound system
- Multi-dock USB charger

GUEST ROOM SERVICES

- 24-hour in-room dining service
- E-newspapers
- Rollaway bed (upon request at extra charge)

LAUNDRY SERVICE

- Laundry, dry cleaning and pressing services available

SMOKING ROOM

- Smoking rooms available

FACILITIES FOR PHYSICALLY CHALLENGED

- Wider shower cubicle for wheelchair users
- Peephole at a height accessible to wheelchair users
- Toilet facilities for the physically challenged
- Flashing fire alarm
- Wheelchair on request

ADDITIONAL BENEFITS FOR CROWNE PRIVILEGE ROOM GUESTS

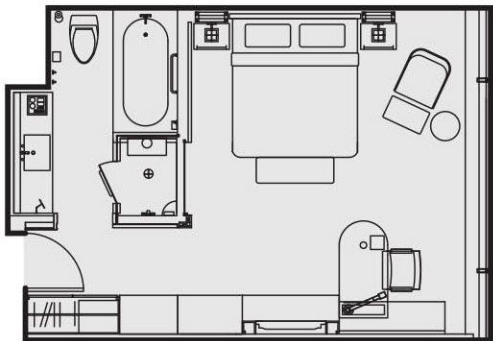
- Complimentary buffet breakfast at Kudos
- Complimentary selected drinks and snacks at Club @28
- Complimentary outgoing local calls and local facsimiles
- Complimentary AT&T and toll free calls
- Dining discounts at Kudos and Club @28
- Discount on laundry, pressing and dry cleaning services (excluding express service)

ROOM SPECIFICATIONS

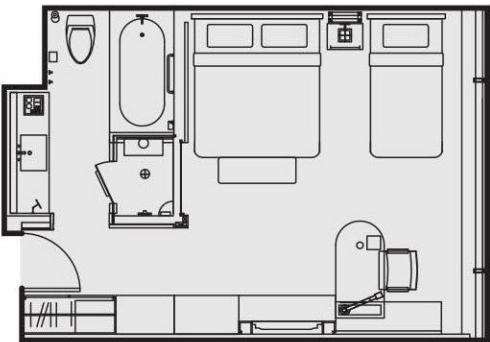
Room Type	No. of Room	Size (m²)	Floor	View & Privileges
SUPERIOR ROOM	53	34-39	6-10/F	<ul style="list-style-type: none"> • Overlooking the city views
DELUXE ROOM	70	34-43	11-19/F	<ul style="list-style-type: none"> • Facing the city or Leighton Hill, the luxurious residential area in Happy Valley
FAMILY ROOM	49	37-39	6-25/F	<ul style="list-style-type: none"> • Overlooking Happy Valley Racecourse or city views • Accommodate up to 2 adults & 2 children
RACECOURSE VIEW ROOM	48	37-43	9-26/F	<ul style="list-style-type: none"> • Overlooking Happy Valley Racecourse views
CROWNE PRIVILEGE ROOM	33	34-39	20-26/F	<ul style="list-style-type: none"> • Overlooking Happy Valley Racecourse or city views • Crowne Privilege benefits available
EXECUTIVE SUITE	10	79-84	20-26/F	<ul style="list-style-type: none"> • Overlooking Happy Valley Racecourse or city views • Crowne Privilege benefits available



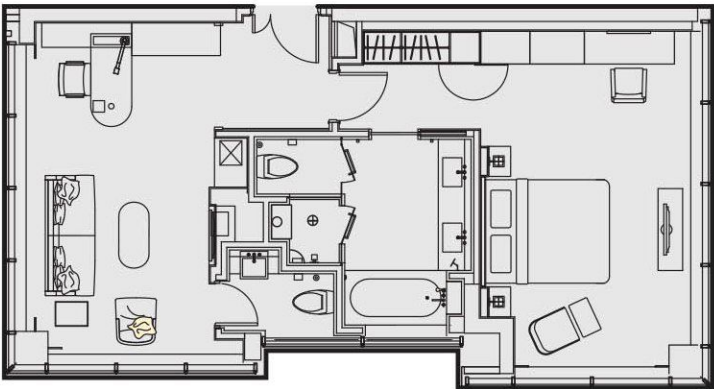
SUPERIOR TWIN ROOM



DELUXE / RACECOURSE VIEW ROOM / CROWNE PRIVILEGE ROOM



FAMILY ROOM (KING & SINGLE)



EXECUTIVE SUITE

RESTAURANT & BAR



Kudos

An all-day dining restaurant offering an extensive selection of international cuisine and delectable buffets.

Location: 1/F

Marble Japanese French Kappo*

Featuring seasonal ingredients flown in from Japan daily, prepared with the look of modern contemporary Kappo cuisine using Japanese-French culinary techniques.

Location: 1/F

*managed and operated by third party



Club @28

A chic rooftop poolside bar and lounge offering an array of premium wines, spirits, cocktails, snacks as well as afternoon tea set.

Location: 28/F

Imperial Treasure Fine Chinese Cuisine*

Offering an indulging dining experience amidst a contemporary and stylish ambience.

Location: 2/F

RECREATION & LEISURE



Rooftop Swimming Pool

Overlooking the magnificent city views while refreshing your body and mind.

Location: 28/F



Fitness Facilities

Breeze provides a perfect place for a full body workout, running or stretching that could keep you rejuvenated.

Location: 5/F (Breeze)



Pavilion & Breeze

Our serene and artistically designed relaxing areas offering panoramic city views.

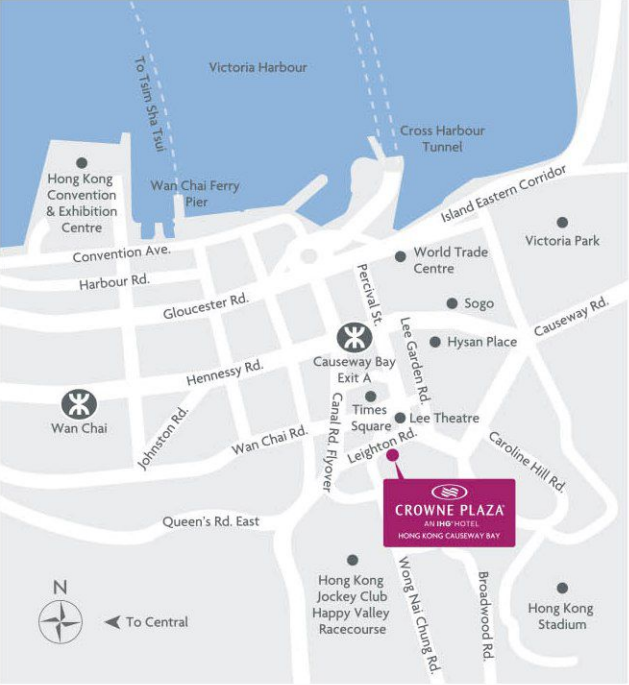
Location: 27/F (Pavilion) and 5/F (Breeze)

BUSINESS SERVICES

Provides a wide range of secretarial services including printing, fax, photocopying as well as Internet facilities.

Location: G/F (Lobby)

LOCATION



How to get to the Hotel from the Hong Kong International Airport?

DISTANCE : 40 km
By Taxi Approx. 45 mins
By Airport Express & Taxi Airport Express Airport Station → Airport Express Hong Kong Station → Taxi → Hotel Approx. 45 mins
By Airport Express & MTR Airport Express Airport Station → Airport Express Hong Kong Station → MTR Central Station → MTR Causeway Bay Station (Exit A) → On foot → Hotel Approx. 60 mins

Crowne Plaza Hong Kong Causeway Bay
T: (852) 3980 3980 F: (852) 3980 3900
8 Leighton Road, Causeway Bay, Hong Kong
rsvn@cphongkong.com
www.cphongkong.com
Toll-free Reservation: 800 968 688
Facebook & Instagram: crowneplazahk

