

Welcome to the Clark Pleasant Branch of the Johnson County Public Library.



**The library is a friendly place for
children with special needs.**

This social story is written to help children
prepare for their visit to the
Johnson County Public Library.

View online at
pageafterpage.org/socialstories.
It can also be checked out from the library.

Clark Pleasant Branch
530 Tracy Rd., Suite 250
New Whiteland, IN 46184
(317) 535-6206
pageafterpage.org

**This is the
Clark Pleasant Branch Library
of the Johnson County Public Library**



The Clark Pleasant Branch is open:

HOURS

Monday	9:00 a.m. - 8:00 p.m.
Tuesday	9:00 a.m. - 8:00 p.m.
Wednesday	9:00 a.m. - 8:00 p.m.
Thursday	9:00 a.m. - 8:00 p.m.
Friday	9:00 a.m. - 6:00 p.m.
Saturday	9:00 a.m. - 5:00 p.m.
Sunday	Closed

The Clark Pleasant Branch is closed on:



New Year's Day



Thanksgiving Eve (6 p.m.)



Easter



Thanksgiving



Memorial Day



Christmas Eve



Independence Day



Christmas



Labor Day

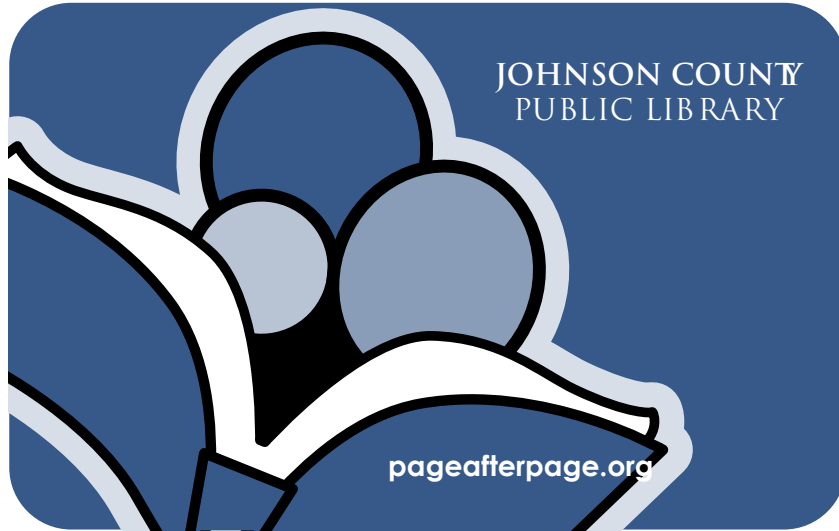


New Year's Eve (5 p.m.)



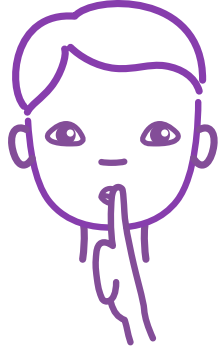
Staff Development Day

**When I go to the library,
I bring my library card.**

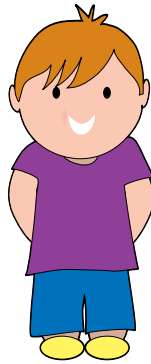


At the library I will try to:

Speak quietly



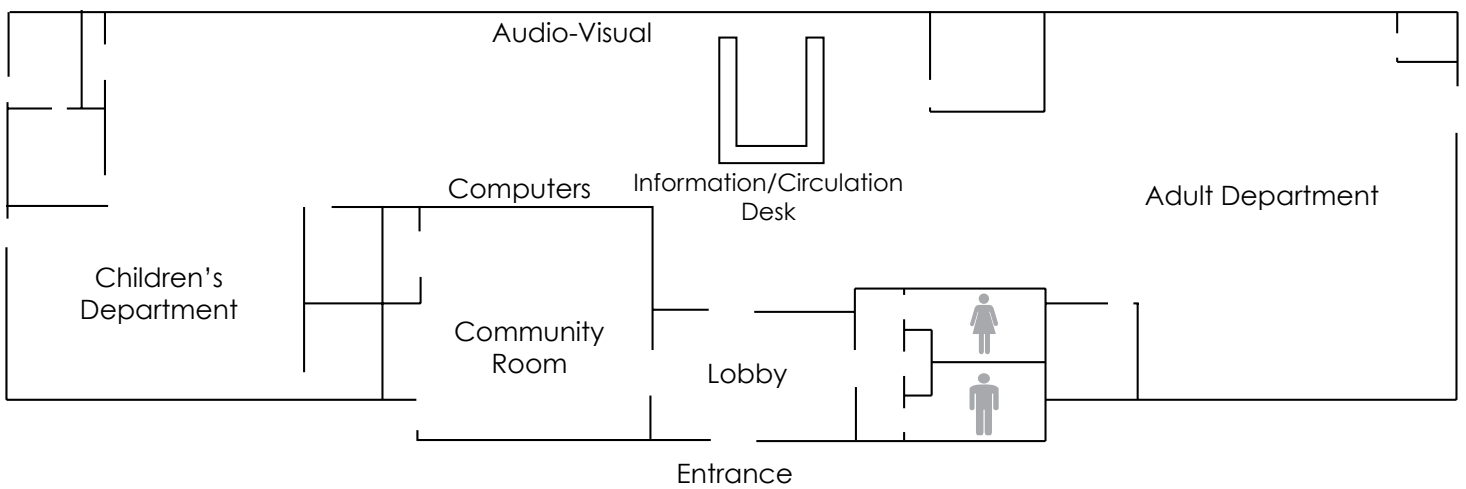
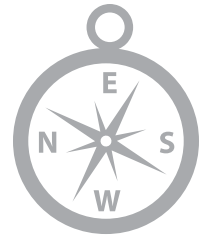
Keep my hands to myself



Stay with my grown-up



The Clark Pleasant Branch is separated into sections.



When I go to the library, I see the Information / Circulation Desk.



**When I need help, I ask a librarian.
The librarians wear a name badge.**



This is the Children's Department.



At the library I can:

Read books or magazines



Play with toys



Make a craft



I can use the computers to:

Play games



Do homework



Use the internet



On special days I can go to a program.



I can check out these items from the library:

Books



Movies



Music CDs



Magazines



Audiobooks



I go to the Information/Circulation Desk to check out the items I want to borrow before I leave the library.



I give the librarian my library card and the materials I am checking out.



I wait for the librarian to scan my library card, books and other items.



**I take my library card and receipt
from the librarian.**

User Name: Smith, Jane
Title: Charlotte's Web
Author: White, E.B.
Item ID: 32939000000000
Date due: 8/24/2016

pageafterpage.org

**I have to bring items back by the
date on the receipt.**

When I return to the library, I put the materials I checked out in the return slot at the Information / Circulation Desk.



If the library is closed or if I am in a hurry, I can return library materials to the outside return.



Now I know what to do at the library!

