

Core identification

According to VDE 0815



1. Color coding for installation cables J-Y(St)Y ... Lg

1.1. For two-pair cable

pair 1: a-red, b-black

pair 2: a-white, b-yellow

1.2. For cables with more than 2 pairs

The color of the a-core in the first pair of each layer is red ("counting" pair), in all other pairs it is white; the color of the b-core is blue, yellow, green, brown, black in repeating order as follows:

No. of pair										Color of b-core
1	6	11	16	21	26	31	36	41	46	blue
2	7	12	17	22	27	32	37	42	47	yellow
3	8	13	18	23	28	33	38	43	48	green
4	9	14	19	24	29	34	39	44	49	brown
5	10	15	20	25	30	35	40	45	50	black
51	56	61	71	71	76	81	86	91	96	blue
52	57	62	72	72	77	82	87	92	97	yellow
53	58	63	73	73	78	83	88	93	98	green
54	59	64	74	74	79	84	89	94	99	brown
55	60	65	75	75	80	85	90	95	100	black

2. Color coding for installation cables JE-Y(St)Y ... Bd, JE-LiYCY ... Bd, JE-H(St)H ... Bd, JE-LIHCH ... Bd, RD-Y(St)Y

2.1. For two-pair cable

pair 1: a-blue, b-red

pair 2: a-grey, b-yellow

2.2. For cables with more than 2 pairs

Color of basic insulation of pairs in one bunch:

Table 1

Pair	1		2		3		4	
Core color	a	b	a	b	a	b	a	b
	blue	red	grey	yellow	green	brown	white	black

Core identification

According to VDE 0815



For identification of bunches, cores are marked with black rings and bunches are wrapped by a colored tape.



Table 2: Identification of bunches

Bunch-no.	Color of rings	Rings of bunches of tape		Helix
		4 cores	8 cores resp. 4 pairs	
1	pink	I	I	-
2		I	II	
3		II	II	
4		II	IV	
5	orange		I	-
6			II	
7			II	
8			IV	
9	violet		I	-
10			II	
11			II	
12			IV	
13	pink		I	blue
14			II	
15			II	
16			IV	
17	orange		I	red
18			II	
19			II	
20			IV	

Core identification

According to VDE 0815



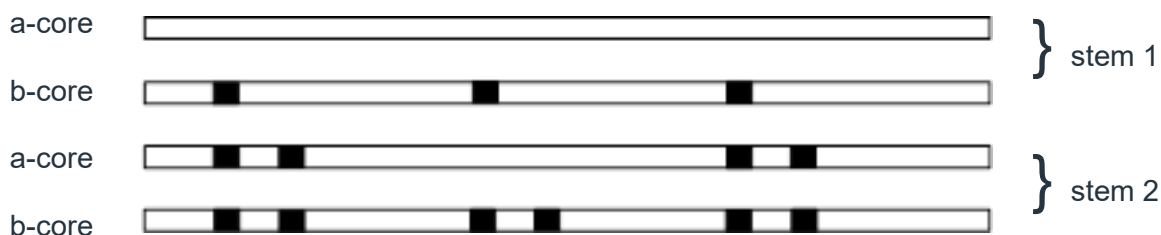
2.3. For cables with more than 12 bundles, in addition to the ring marking, the other bundles are marked with a colored helix according to Table 2.

3. Color coding for installation cables J-YY ... Bd, J-H(St)H ... Bd, J- 2Y(St)Y St III Bd

The five star-quads of each bunch have the following identification:

1. basic insulation of all cores rot
2. basic insulation of all cores green
3. basic insulation of all cores grey
4. basic insulation of all cores yellow
5. basic insulation of all cores white

The cores within one star-quad are marked by rings:



The counting bunch is marked by a red tape in each layer. All other bunches have a white or nature tape.